

LEA Name : Mifflin County SD
Address : 201 Eighth St - Highland Park
Lewistown , PA 17044

County : Mifflin
AUN Number : 111444602
LEA Type : SD

Annual Financial Report Accuracy Certification Statement

For Fiscal Year Ending

6/30/2025

Pennsylvania Department of Education

&

Office of Comptroller Operations

PDE-2056: Intermediate Unit

PDE-2057: School District, AVTS/CTC, Charter School,
and Special Program Jointure

CERTIFICATION: By signing this page I agree that the electronic data submitted is a complete and accurate statement of the financial operations and status of the local education agency for the fiscal year. It has been prepared in accordance with generally accepted accounting principles and established Commonwealth of PA reporting guidelines.



Chief School Administrator Signature

11/05/2025

Date



Board Secretary Signature

11/05/2025

Date

Melinda Kenepp

Contact Person

mkk08@mcsdk12.org

Contact Person E-mail Address

(717)248-0148

Ext :2517

Contact Person Telephone Number

Contact Person Fax Number

Audit Certification
Annual Financial Report:
For Fiscal Year Ending **6/30/2025**
(Pursuant to PA School Code Section 218(b))

Mifflin County SD
111444602
Mifflin

Audit Certification Due: 12/31/2025

on is applicable to the Annual Financial Report data submitted through the Consolidated Financial Reporting System (CFRS).


N: By signing this page I agree that the financial statements of the school have been properly audited as noted above pursuant to Article
e auditor's professional opinion, the Annual Financial Report (PDE-2057) submitted through CFRS is materially consistent with the
l statements.

Administrator



12/15/2025
Date

Board Secretary


Signature

12/15/2025
Date

Melinda Kenepp

Contact Person

mkk08@mcsdk12.org

Contact Person E-mail Address

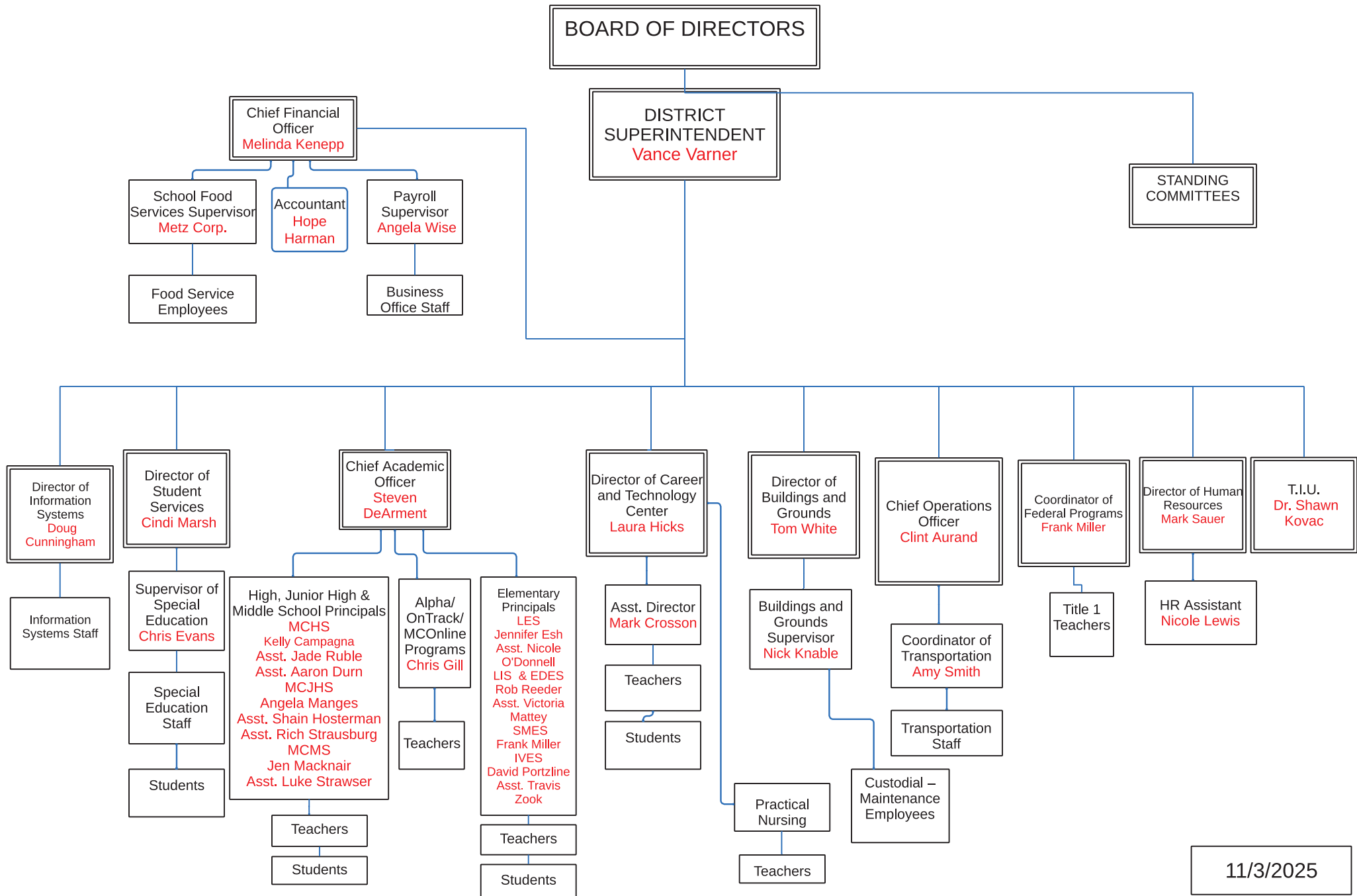
(717)248-0148

Ext :2517

Contact Person Telephone Number

Contact Person Fax Number

ADMINISTRATIVE ORGANIZATION MIFFLIN COUNTY SCHOOL DISTRICT



11/3/2025



Book	Policy Manual
Section	700 Property
Title	Property Records - Equipment Definition
Code	706.2
Status	Active
Adopted	August 24, 2023

Purpose

Independent asset units shall be classified as equipment in the district's accounting records which have a per unit cost equal to or greater than \$5,000 and have an estimated useful life of one (1) year or more.

In addition to the above criteria, the item should:

1. Retain its original shape, appearance, and character with use;
2. Not lose its identity through incorporation or fabrication into a different or more complex unit or substance; and
3. Be more feasible to repair rather than replace when a failure occurs.

If an independent asset does not meet the criteria listed above, it should be classified as a supply item.

The cost of normal maintenance and repairs that do not add to the value of the asset or materially extend assets lives are not capitalized.

Capital Assets

Buildings, building improvements, equipment, and improvements other than buildings of the school district and its component unit are depreciated using the straight-line method over the following estimated lives:[1]

<u>Assets</u>	<u>Years</u>
Buildings	15 - 40
Building improvements	5 - 30
Equipment	3 - 20
Improvements other than buildings	10 - 20

<u>Val Number</u>	<u>Description</u>	<u>Justification</u>
12195	REG: Current Year AFR Beginning Fund Balance must equal Prior Year AFR Ending Fund Balance. Justifications to this error must fully explain the situation that prompted a fund balance restatement. "Auditor Adjustment" is not a sufficient justification. Total Govt Funds, Beg Bal: \$35,385,750.00 PY Ending Bal, Govt Funds: \$35,502,940.00	Prior period adjustment for the implementation of GASB 101 Compensated Absences \$117,192
12196	REG - Fund 10: Current Year AFR Beginning Fund Balance must equal Prior Year AFR Ending Fund Balance. Justifications to this error must fully explain the situation that prompted a fund balance restatement. "Auditor Adjustment" is not a sufficient justification. REG Fund 10, Beg Fund Bal: \$27,082,612.00 PY Ending Fund Balance: \$27,199,802.00	Prior period adjustment for the implementation of GASB 101 Compensated Absences \$117,192
50210	SOIN: A Governmental Fund General Obligation Bond (CIB) contains entries for both Debt at Beginning of Fiscal Year, and Additions During Fiscal Year. Correct data or enter a justification.	General Obligation Note Series 2023 allows for drawdowns; \$3,412,763 was advanced during the reporting period
50380	CESE: The amount reported on Line 1 of the CESE exceeds the Governmental Fund special education expenditures in Function 1200. Please correct or provide a justification.	In addition to the 1200 function for special education, other function 1000 expenses were allocated to special education based on special education enrollment by building
50450	SESS - 2350 Legal and Accounting Services: SESS Schedule amounts for Special Education vary from prior year by 40% or more. Correct the data or enter a justification. SESS Schedule 2350: \$14,234.00 Prior Year SESS Schedule 2350: \$32,396.00	Legal fees for special education vary depending on the level of service required in any given year
50460	SESS - 2420 Medical Services: SESS Schedule amounts for Special Education vary from prior year by 40% or more. Correct the data or enter a justification. SESS Schedule 2420: \$215,246.00 Prior Year SESS Schedule 2420: \$0.00	The district employs registered nurses and licensed practical nurses who perform a variety of health-related services. Expenses were historically coded to 2420 and reclassified to 2440 for the AFR. Upon review of the Chart of Accounts, no reclass needed.
50470	SESS - 2440 Nursing Services: SESS Schedule amounts for Special Education vary from prior year by 40% or more. Correct the data or enter a justification. SESS Schedule 2440: \$0.00 Prior Year SESS Schedule 2440: \$187,811.00	The district employs registered nurses and licensed practical nurses who perform a variety of health-related services. Expenses were historically coded to 2420 and reclassified to 2440 for the AFR. Upon review of the Chart of Accounts, no reclass needed.

LEA : 111444602 Mifflin County SD

Printed 12/16/2025 10:33:38 AM

Amounts Expressed in Whole Dollars		<u>General Fund</u> <u>(10)</u>	<u>Student Sponsored</u> <u>Activity Fund</u> <u>(21)</u>	<u>Public Purpose Trust</u> <u>(27)</u>	<u>Other Compt Approved</u> <u>(28)</u>	<u>Athletic / Activity</u> <u>(29)</u>
Assets And Deferred Outflows Of Resources						
Assets						
0100	Cash and Cash Equivalents	34,407,951				
0110	Investments					
0120	Taxes Receivable	1,773,004				
0130	Due From Other Funds					
0141	Due From Other Governments	885,499				
0142	State Revenue Receivable	3,165,579				
0143	Federal Revenue Receivable	434,406				
0145	Other Intergovernmental Revenue Receivable					
0146	Due from Primary Government					
0147	Due from Component Unit					
0150	Other Receivables	1,807,000				
0170	Inventories					
0180	Prepaid Expenses (Expenditures)	105,626				
0190	Other Current Assets					
Total Assets		\$42,579,065				
0910	Deferred Outflows of Resources					
Total Assets And Deferred Outflows Of Resources		\$42,579,065				

LEA : 111444602 Mifflin County SD

Printed 12/16/2025 10:33:38 AM

Amounts Expressed in Whole Dollars		<u>Capital Reserve (690.</u> <u>1850)</u> <u>(31)</u>	<u>Capital Reserve (1431)</u> <u>(32)</u>	<u>Other Capital Projects</u> <u>Fund</u> <u>(39)</u>	<u>Debt Service</u> <u>(40)</u>	<u>Permanent</u> <u>(90)</u>
Assets And Deferred Outflows Of Resources						
Assets						
0100	Cash and Cash Equivalents			5,746,368	21,900	
0110	Investments					
0120	Taxes Receivable					
0130	Due From Other Funds			2,954,703		
0141	Due From Other Governments					
0142	State Revenue Receivable					
0143	Federal Revenue Receivable					
0145	Other Intergovernmental Revenue Receivable					
0146	Due from Primary Government					
0147	Due from Component Unit					
0150	Other Receivables			1,517		
0170	Inventories					
0180	Prepaid Expenses (Expenditures)			5,000		
0190	Other Current Assets					
Total Assets				\$8,707,588	\$21,900	
0910	Deferred Outflows of Resources					
Total Assets And Deferred Outflows Of Resources				\$8,707,588	\$21,900	

LEA : 111444602 Mifflin County SD

Printed 12/16/2025 10:33:38 AM

Amounts Expressed in Whole Dollars		<u>Total Governmental</u> <u>Funds</u>
Assets And Deferred Outflows Of Resources		
Assets		
0100	Cash and Cash Equivalents	40,176,219
0110	Investments	
0120	Taxes Receivable	1,773,004
0130	Due From Other Funds	2,954,703
0141	Due From Other Governments	885,499
0142	State Revenue Receivable	3,165,579
0143	Federal Revenue Receivable	434,406
0145	Other Intergovernmental Revenue Receivable	
0146	Due from Primary Government	
0147	Due from Component Unit	
0150	Other Receivables	1,808,517
0170	Inventories	
0180	Prepaid Expenses (Expenditures)	110,626
0190	Other Current Assets	
Total Assets		\$51,308,553
0910	Deferred Outflows of Resources	
Total Assets And Deferred Outflows Of Resources		\$51,308,553

LEA : 111444602 Mifflin County SD

Printed 12/16/2025 10:33:38 AM

Amounts Expressed in Whole Dollars		<u>General Fund</u> <u>(10)</u>	<u>Student Sponsored</u> <u>Activity Fund</u> <u>(21)</u>	<u>Public Purpose Trust</u> <u>(27)</u>	<u>Other Compt Approved</u> <u>(28)</u>	<u>Athletic / Activity</u> <u>(29)</u>
Liabilities And Deferred Inflows Of Resources And Fund Balances						
Liabilities						
0400	Due to Other Funds	2,897,006				
0411	Due to Other Governments					
0412	Due to Primary Government					
0413	Due to Component Unit					
0420	Accounts Payable	825,116				
0430	Contracts Payable					
0440	Current Portion of Long-Term Debt	108,809				
0450	Short-Term Payables					
0461	Accrued Salaries and Benefits	7,518,534				
0462	Payroll Deductions and Withholding	405,676				
0480	Unearned Revenues	1,852,772				
0490	Other Current Liabilities	75,969				
Total Liabilities		\$13,683,882				
0950	Deferred Inflows of Resources					
Fund Balances						
0810	Nonspendable Fund Balance	105,626				
0820	Restricted Fund Balance					
0830	Committed Fund Balance	124,220				
0840	Assigned Fund Balance	20,868,444				
0850	Unassigned Fund Balance	7,796,893				
Total Fund Balances		\$28,895,183				
Total Liabilities, Deferred Inflows Of Resources And Fund Balances		\$42,579,065				

LEA : 111444602 Mifflin County SD

Printed 12/16/2025 10:33:38 AM

Amounts Expressed in Whole Dollars		<u>Capital Reserve (690.</u> <u>1850)</u> <u>(31)</u>	<u>Capital Reserve (1431)</u> <u>(32)</u>	<u>Other Capital Projects</u> <u>Fund</u> <u>(39)</u>	<u>Debt Service</u> <u>(40)</u>	<u>Permanent</u> <u>(90)</u>
Liabilities And Deferred Inflows Of Resources And Fund Balances						
Liabilities						
0400	Due to Other Funds					
0411	Due to Other Governments					
0412	Due to Primary Government					
0413	Due to Component Unit					
0420	Accounts Payable			1,027,749		
0430	Contracts Payable					
0440	Current Portion of Long-Term Debt					
0450	Short-Term Payables					
0461	Accrued Salaries and Benefits					
0462	Payroll Deductions and Withholding					
0480	Unearned Revenues					
0490	Other Current Liabilities					
Total Liabilities				\$1,027,749		
0950	Deferred Inflows of Resources					
Fund Balances						
0810	Nonspendable Fund Balance					
0820	Restricted Fund Balance					
0830	Committed Fund Balance					
0840	Assigned Fund Balance			7,679,839	21,900	
0850	Unassigned Fund Balance					
Total Fund Balances				\$7,679,839	\$21,900	
Total Liabilities, Deferred Inflows Of Resources And Fund Balances				\$8,707,588	\$21,900	

LEA : 111444602 Mifflin County SD

Printed 12/16/2025 10:33:38 AM

Amounts Expressed in Whole Dollars		<u>Total Governmental</u> <u>Funds</u>
Liabilities And Deferred Inflows Of Resources And Fund Balances		
Liabilities		
0400 Due to Other Funds		2,897,006
0411 Due to Other Governments		
0412 Due to Primary Government		
0413 Due to Component Unit		
0420 Accounts Payable		1,852,865
0430 Contracts Payable		
0440 Current Portion of Long-Term Debt		108,809
0450 Short-Term Payables		
0461 Accrued Salaries and Benefits		7,518,534
0462 Payroll Deductions and Withholding		405,676
0480 Unearned Revenues		1,852,772
0490 Other Current Liabilities		75,969
Total Liabilities		\$14,711,631
0950 Deferred Inflows of Resources		
Fund Balances		
0810 Nonspendable Fund Balance		105,626
0820 Restricted Fund Balance		
0830 Committed Fund Balance		124,220
0840 Assigned Fund Balance		28,570,183
0850 Unassigned Fund Balance		7,796,893
Total Fund Balances		\$36,596,922
Total Liabilities, Deferred Inflows Of Resources And Fund Balances		\$51,308,553

LEA : 111444602 Mifflin County SD

Printed 12/16/2025 10:34:05 AM

Amounts Expressed in Whole Dollars	<u>General Fund</u> <u>(10)</u>	<u>Student Sponsored</u> <u>Activity Fund</u> <u>(21)</u>	<u>Public Purpose Trust</u> <u>(27)</u>	<u>Other Compt Approved</u> <u>(28)</u>	<u>Athletic / Activity</u> <u>(29)</u>
Revenues					
6000 Revenue from Local Sources	42,151,518				
7000 Revenue from State Sources	54,670,405				
8000 Revenue from Federal Sources	4,168,605				
Total Revenues	\$100,990,528				
Expenditures					
1000 Instruction	55,009,401				
2000 Support Services	27,419,939				
3000 Operation of Non-Instructional Services	1,539,682				
4000 Facilities Acquisition, Construction and Improvement Services	148,442				
5110 Debt Service	7,569,698				
5130 Refund of Prior Year Revenues / Receipts					
5140 Leases and Other Right-to-Use Arrangements	410,675				
Total Expenditures	\$92,097,837				
Excess (Deficiency) Of Revenues Over Expenditures	\$8,892,691				
Other Financing Sources (Uses)					
9110 Face Value of Bonds Issued					
9120 Proceeds from Refunding of Bonds					
9130 Bond Premiums					
9200 Proceeds from Extended Term Financing, Leases, and Other Right-to-Use Arrangements	151,357				
9300 Interfund Transfers - IN	3,412,763				
9400 Sale of or Compensation for Loss of Fixed Assets					
9710 Transfers from Component Units					
9720 Transfers from Primary Governments					
9910 Other Financing Sources Not Listed in the 9000 Series					
9990 Insurance Recoveries	25,000				
5120 Debt Service – Refunded Bonds					
5150 Bond Discounts					
5200 Interfund Transfers – Out	10,669,238				
5300 Transfers Out to Component Units/Primary Governments					
Total Other Financing Sources (Uses)	(\$7,080,118)				

Amounts Expressed in Whole Dollars		<u>Capital Reserve (690.1850)</u> <u>(31)</u>	<u>Capital Reserve (1431)</u> <u>(32)</u>	<u>Other Capital Projects</u> <u>Fund</u> <u>(39)</u>	<u>Debt Service</u> <u>(40)</u>	<u>Permanent</u> <u>(90)</u>
Revenues						
6000	Revenue from Local Sources			395,706		
7000	Revenue from State Sources					
8000	Revenue from Federal Sources					
Total Revenues				\$395,706		
Expenditures						
1000	Instruction					
2000	Support Services			45,327	146,043	
3000	Operation of Non-Instructional Services					
4000	Facilities Acquisition, Construction and Improvement Services			11,625,928		
5110	Debt Service					
5130	Refund of Prior Year Revenues / Receipts					
5140	Leases and Other Right-to-Use Arrangements					
Total Expenditures				\$11,671,255	\$146,043	
Excess (Deficiency) Of Revenues Over Expenditures				(\$11,275,549)	(\$146,043)	
Other Financing Sources (Uses)						
9110	Face Value of Bonds Issued				3,412,763	
9120	Proceeds from Refunding of Bonds				12,505,000	
9130	Bond Premiums				667,765	
9200	Proceeds from Extended Term Financing, Leases, and Other Right-to-Use Arrangements					
9300	Interfund Transfers - IN			10,669,238		
9400	Sale of or Compensation for Loss of Fixed Assets					
9710	Transfers from Component Units					
9720	Transfers from Primary Governments					
9910	Other Financing Sources Not Listed in the 9000 Series					
9990	Insurance Recoveries					
5120	Debt Service – Refunded Bonds				13,021,810	
5150	Bond Discounts					
5200	Interfund Transfers – Out				3,412,763	
5300	Transfers Out to Component Units/Primary Governments					
Total Other Financing Sources (Uses)				\$10,669,238	\$150,955	

Amounts Expressed in Whole Dollars		<u>Total Governmental Funds</u>
Revenues		
6000	Revenue from Local Sources	42,547,224
7000	Revenue from State Sources	54,670,405
8000	Revenue from Federal Sources	4,168,605
Total Revenues		\$101,386,234
Expenditures		
1000	Instruction	55,009,401
2000	Support Services	27,611,309
3000	Operation of Non-Instructional Services	1,539,682
4000	Facilities Acquisition, Construction and Improvement Services	11,774,370
5110	Debt Service	7,569,698
5130	Refund of Prior Year Revenues / Receipts	
5140	Leases and Other Right-to-Use Arrangements	410,675
Total Expenditures		\$103,915,135
Excess (Deficiency) Of Revenues Over Expenditures		(\$2,528,901)
Other Financing Sources (Uses)		
9110	Face Value of Bonds Issued	3,412,763
9120	Proceeds from Refunding of Bonds	12,505,000
9130	Bond Premiums	667,765
9200	Proceeds from Extended Term Financing, Leases, and Other Right-to-Use Arrangements	151,357
9300	Interfund Transfers - IN	14,082,001
9400	Sale of or Compensation for Loss of Fixed Assets	
9710	Transfers from Component Units	
9720	Transfers from Primary Governments	
9910	Other Financing Sources Not Listed in the 9000 Series	
9990	Insurance Recoveries	25,000
5120	Debt Service – Refunded Bonds	13,021,810
5150	Bond Discounts	
5200	Interfund Transfers – Out	14,082,001
5300	Transfers Out to Component Units/Primary Governments	
Total Other Financing Sources (Uses)		\$3,740,075

Amounts Expressed in Whole Dollars		<u>General Fund</u> <u>(10)</u>	<u>Student Sponsored</u> <u>Activity Fund</u> <u>(21)</u>	<u>Public Purpose Trust</u> <u>(27)</u>	<u>Other Compt Approved</u> <u>(28)</u>	<u>Athletic / Activity</u> <u>(29)</u>
Special And Extraordinary Items						
9920	Special Items – Gains					
9930	Extraordinary Items – Gains					
5520	Special Items – Losses					
5530	Extraordinary Items – Losses					
Net Change In Fund Balances		\$1,812,573				
Fund Balance						
0001	Fund Balance - Beginning of Fiscal Year	27,082,612				
Fund Balance - End Of Year		\$28,895,185				

Amounts Expressed in Whole Dollars		<u>Capital Reserve (690.</u> <u>1850)</u> <u>(31)</u>	<u>Capital Reserve (1431)</u> <u>(32)</u>	<u>Other Capital Projects</u> <u>Fund</u> <u>(39)</u>	<u>Debt Service</u> <u>(40)</u>	<u>Permanent</u> <u>(90)</u>
Special And Extraordinary Items						
9920	Special Items – Gains					
9930	Extraordinary Items – Gains					
5520	Special Items – Losses					
5530	Extraordinary Items – Losses					
Net Change In Fund Balances				(\$606,311)	\$4,912	
Fund Balance						
0001	Fund Balance - Beginning of Fiscal Year			8,286,150	16,988	
Fund Balance - End Of Year				\$7,679,839	\$21,900	

Amounts Expressed in Whole Dollars		<u>Total Governmental Funds</u>
Special And Extraordinary Items		
9920	Special Items – Gains	
9930	Extraordinary Items – Gains	
5520	Special Items – Losses	
5530	Extraordinary Items – Losses	
Net Change In Fund Balances		\$1,211,174
Fund Balance		
0001	Fund Balance - Beginning of Fiscal Year	35,385,750
Fund Balance - End Of Year		\$36,596,924

LEA : 111444602 Mifflin County SD

Printed 12/16/2025 10:34:07 AM

Amounts Expressed in Whole Dollars		<u>Food Service</u> <u>(51)</u>	<u>Child Care</u> <u>Operations</u> <u>(52)</u>	<u>Other Enterprise</u> <u>(58)</u>	<u>TOTAL</u>	<u>Internal Service</u> <u>(60)</u>
Assets And Deferred Outflows Of Resources						
Current Assets						
0100	Cash and Cash Equivalents	284,254			284,254	
0110	Investments					
0130	Due From Other Funds					
0141	Due From Other Governments					
0142	State Revenue Receivable					
0143	Federal Revenue Receivable					
0146	Due from Primary Government					
0147	Due from Component Unit					
0150	Other Receivables	242			242	
0170	Inventories	55,163			55,163	
0180	Prepaid Expenses (Expenditures)					
0190	Other Current Assets					
Total Current Assets		\$339,659			\$339,659	
Noncurrent Assets						
0211	Land					
0212	Site Improvements (Net)					
0220	Buildings and Building Improvements (Net)					
0230	Tangible Property and Intangible Right-To-Use Assets (Net)					
0250	Construction in Progress					
0260	Long Term Prepayments					
0290	Other Noncurrent Assets					
Total Noncurrent Assets						
0910	Deferred Outflows of Resources	128,976			128,976	
Total Assets And Deferred Outflows Of Resources		\$468,635			\$468,635	

LEA : 111444602 Mifflin County SD

Printed 12/16/2025 10:34:07 AM

Amounts Expressed in Whole Dollars	<u>Food Service</u> <u>(51)</u>	<u>Child Care</u> <u>Operations</u> <u>(52)</u>	<u>Other Enterprise</u> <u>(58)</u>	<u>TOTAL</u>	<u>Internal Service</u> <u>(60)</u>
Liabilities And Deferred Inflows Of Resources And Net Position					
Current Liabilities					
0400 Due to Other Funds	53,952			53,952	
0411 Due to Other Governments					
0413 Due to Component Unit					
0420 Accounts Payable	584			584	
0430 Contracts Payable					
0440 Current Portion of Long-Term Debt	142,642			142,642	
0450 Short-Term Payables					
0461 Accrued Salaries and Benefits	2,215			2,215	
0462 Payroll Deductions and Withholding					
0480 Unearned Revenues					
0490 Other Current Liabilities	36,049			36,049	
Total Current Liabilities	\$235,442			\$235,442	
Noncurrent Liabilities					
0510 Bonds Payable					
0520 Extended-Term Financing Agreements Payable					
0530 Lease and Other Right-To-Use Obligations					
0540 Accumulated Compensated Absences	68,157			68,157	
0550 Authority Lease Obligations					
0560 Other Post-Employment Benefits (OPEB)					
0570 Net Pension Liability	2,486,047			2,486,047	
0599 Other Noncurrent Liabilities					
Total Noncurrent Liabilities	\$2,554,204			\$2,554,204	
Total Liabilities	\$2,789,646			\$2,789,646	
0950 Deferred Inflows of Resources	109,818			109,818	
Net Position					
0791 Net Investment in Capital Assets					
0008 Restricted Net Position (0792 – 0798)					
0799 Unrestricted Net Position	(2,430,829)			(2,430,829)	
Total Net Position	(\$2,430,829)			(\$2,430,829)	
Total Liabilities And Deferred Inflows Of Resources And Net Position	\$468,635			\$468,635	

Amounts Expressed in Whole Dollars		<u>Food Service</u> <u>(51)</u>	<u>Child Care Operations</u> <u>(52)</u>	<u>Other Enterprise</u> <u>(58)</u>	<u>TOTAL</u>	<u>Internal Service</u> <u>(60)</u>
Operating Revenues						
6600	Food Service Revenue	531,370			531,370	
0071	Charges for Services	51,696			51,696	
0072	Other Operating Revenue					
Total Operating Revenues		\$583,066			\$583,066	
Operating Expenses						
100	Personnel Services – Salaries	1,194,917			1,194,917	
200	Personnel Services – Employee Benefits	705,441			705,441	
300	Purchased Professional and Technical Services					
400	Purchased Property Services	48,522			48,522	
500	Other Purchased Services	180,581			180,581	
600	Supplies	1,674,938			1,674,938	
740	Depreciation					
770	Amortization Expense					
810	Dues and Fees					
880	Refunds of Prior Years' Receipts					
890	Miscellaneous Expenditures	4,793			4,793	
Total Operating Expenses		\$3,809,192			\$3,809,192	
Operating Income (Loss)		(\$3,226,126)			(\$3,226,126)	
Non Operating Revenues (Expenses)						
6500	Earnings on Investments	18,166			18,166	
6830	Federal Revenue from Intermediary Sources					
6920	Contributions and Donations from Private Sources	33,002			33,002	
6930	Gains or Losses on Sale of Fixed Assets					
6991	Refunds of a Prior Year Expenditure					
7000	Revenue from State Sources	460,535			460,535	
8000	Revenue from Federal Sources	2,774,940			2,774,940	
9990	Insurance Recoveries					
820	Claims and Judgments Against the LEA					
830	Interest					
TOTAL Non Operating Revenues (Expenses)		\$3,286,643			\$3,286,643	
Income (Loss) Before Contributions And Transfers		\$60,517			\$60,517	

Amounts Expressed in Whole Dollars	<u>Food Service</u> <u>(51)</u>	<u>Child Care Operations</u> <u>(52)</u>	<u>Other Enterprise</u> <u>(58)</u>	<u>TOTAL</u>	<u>Internal Service</u> <u>(60)</u>
Contributions, Transfers, and Special and Extraordinary Items					
5200 Interfund Transfers – Out					
5300 Transfers Out to Component Units/Primary Governments					
5520 Special Items – Losses					
5530 Extraordinary Items – Losses					
9300 Interfund Transfers - IN					
9500 Capital Contributions					
9700 Transfers IN From Component Units/Primary Governments					
9920 Special Items – Gains					
9930 Extraordinary Items – Gains					
Change In Net Position	\$60,517			\$60,517	
0002 Net Position - Beginning of Fiscal Year	(2,491,346)			(2,491,346)	
0003 Accounting Changes / Residual Equity Transfers					
Net Position - End Of Year	(\$2,430,829)			(\$2,430,829)	

LEA : 111444602 Mifflin County SD

Printed 12/16/2025 10:34:35 AM

Amounts Expressed in Whole Dollars		<u>Food Service</u> <u>(51)</u>	<u>Child Care Operations</u> <u>(52)</u>	<u>Other Enterprise</u> <u>(58)</u>	<u>TOTAL</u>	<u>Internal Service(60)</u>
Cash Flows From Operating Activities						
0011	Cash Receipts From Users	595,939			595,939	
0012	Cash Receipts From Assessments Made to Other Funds					
0013	Cash Receipts From Earnings on Investments					
0014	Cash Receipts From Other Operating Revenue					
0015	Cash Payments To Employees For Services	2,365,229			2,365,229	
0016	Cash Payments For Insurance Claims					
0017	Cash Payments To Suppliers For Goods and Services	1,670,518			1,670,518	
0018	Cash Payments For Other Operating Expenses					
Net Cash Provided By (Used For) Operating Activities		(\$3,439,808)			(\$3,439,808)	
Cash Flows From Non-Capital Financing Activities						
0021	Receipts From Local Sources - 6000	33,002			33,002	
0022	Receipts From State Sources - 7000	463,543			463,543	
0023	Receipts From Federal Sources -8000	2,550,019			2,550,019	
0024	Notes and Loans Received (Repaid)					
0025	Interest Paid on Notes/Loans - 5100-830					
0026	Operating Transfers In (Out)/Residual Equity Trans					
0027	Operating Transfers In (Out) Primary Government / Comp Unit					
0028	Receipts From Refund of Prior Year Expenditures - 6991					
0029	Special and Extraordinary Gains (losses)					
0030	Receipts from Insurance Recoveries -9990					
Net Cash Prov By (Used for) Non-Capital Financing Activities		\$3,046,564			\$3,046,564	
Cash Flows From Capital and Related Financing Activities						
0031	Payments For Fac Acq, Const, and Imp - 4000					
0032	Proceeds from Disposal of Capital Assets					
0033	Proceeds From Extended Term Financing - 9200					
0034	Principal Paid on Financing Agreements					
0035	Interest Paid on Financing Agreements - 5100-830					
0036	(Inc) Dec in Contributed Capital					
Net Cash Prov By (Used for) Capital and Related Financing Activities						
Cash Flows From Investing Activities						
0041	Earnings on Investments - 6500	18,166			18,166	
0042	Purchase of Inv Securities / Deposits to Inv Pools					
0043	Receipts From Investment Pool Withdrawals					
0044	Proceeds from Sale and Maturity of Inv Securities					

LEA : 111444602 Mifflin County SD

Printed 12/16/2025 10:34:35 AM

0045 Loans Received (Paid)

Net Cash Prov By (Used for) Investing Activities	\$18,166	\$18,166
--	----------	----------

LEA : 111444602 Mifflin County SD

Printed 12/16/2025 10:34:35 AM

	<u>Food Service</u> <u>(51)</u>	<u>Child Care Operations</u> <u>(52)</u>	<u>Other Enterprise</u> <u>(58)</u>	<u>TOTAL</u>	<u>Internal Service</u> <u>(60)</u>
Net Increase (Decrease) in Cash Flows	(375,078)			(375,078)	
0004 Cash and Cash Equivalents Beginning of Year	659,331			659,331	
Cash and Cash Equivalents at Year End	\$284,253			\$284,253	
Reconciliation of Operating Income (Loss) To Net Cash Provided by (Used For) Operating Activities					
0005 Operating Income (Loss) per REP	(3,226,126)			(3,226,126)	
Adjustments					
0051 Depreciation and Net Amortization					
0052 Provision for Uncollectible Accounts					
0053 Other Adjustments	263,103			263,103	
Effect of Changes in Assets, Liabilities, Deferred Outflows and Deferred Inflows					
0054 (Inc) Dec In Accounts Receivable (0120-0150)	10,080			10,080	
0055 Advances to Other Funds	(423,753)			(423,753)	
0056 (Inc) Dec in Inventories (0170)	(17,709)			(17,709)	
0057 (Inc) Dec in Prepaid Expenses (0180)	2,831			2,831	
0058 (Inc) Dec in Other Current or Noncurrent Assets					
0064 Deferred Outflows (0910)	23,588			23,588	
0059 Inc (Dec) in Accounts Payable (0400-0450)	(1,898)			(1,898)	
0060 Inc (Dec) in Accrued Salaries/Benefits (0461)	582			582	
0065 Inc (Dec) in Net Pension Liabilities (0570)	(131,973)			(131,973)	
0066 Inc (Dec) in Other Postemp Benefit Oblig (0560)	3,906			3,906	
0061 Inc (Dec) in Payroll Deductions/Withholding (0462)					
0062 Inc (Dec) in Unearned Revenue (0480)	(1,840)			(1,840)	
0063 Inc (Dec) in Other Current or Noncurrent Liabilities	8,908			8,908	
0067 Deferred Inflows (0950)	50,494			50,494	
Total Adjustments	(\$213,681)			(\$213,681)	
Cash Provided By (Used for) Total	(\$3,439,807)			(\$3,439,807)	

COMBINED STATEMENT OF CASH FLOWS
SCHEDULE OF NONCASH INVESTING, CAPITAL, AND FINANCING ACTIVITIES

Explanation of Transaction and Balance Sheet Effect	Amount
Total	

LEA : 111444602 Mifflin County SD

Printed 12/16/2025 10:34:37 AM

Amounts Expressed in Whole Dollars		<u>Private Purpose Trust</u> <u>(71)</u>	<u>Investment Trust</u> <u>(72)</u>	<u>Pension Trust</u> <u>(73)</u>	<u>Student Activity Custodial</u> <u>(81)</u>
Assets And Deferred Outflows Of Resources					
Assets					
0100	Cash and Cash Equivalents	196			221,223
0110	Investments				
0130	Due From Other Funds				
0140	Due from Other Governments, Primary Government and Component Units				
0150	Other Receivables				
0170	Inventories				
0180	Prepaid Expenses (Expenditures)				
0190	Other Current Assets				
0220	Buildings and Building Improvements (Net)				
0230	Tangible Property and Intangible Right-To-Use Assets (Net)				
Total Assets		\$196			\$221,223
0910	Deferred Outflows of Resources				
Total Assets And Deferred Outflows Of Resources		\$196			\$221,223

LEA : 111444602 Mifflin County SD

Printed 12/16/2025 10:34:37 AM

Amounts Expressed in Whole Dollars		<u>Other Custodial</u> <u>(89)</u>	<u>Fiduciary Component Units</u> <u>(98)</u>	<u>Total Fiduciary Funds</u>
Assets And Deferred Outflows Of Resources				
Assets				
0100	Cash and Cash Equivalents			221,419
0110	Investments			
0130	Due From Other Funds			
0140	Due from Other Governments, Primary Government and Component Units			
0150	Other Receivables			
0170	Inventories			
0180	Prepaid Expenses (Expenditures)			
0190	Other Current Assets			
0220	Buildings and Building Improvements (Net)			
0230	Tangible Property and Intangible Right-To-Use Assets (Net)			
Total Assets				\$221,419
0910	Deferred Outflows of Resources			
Total Assets And Deferred Outflows Of Resources				\$221,419

LEA : 111444602 Mifflin County SD

Printed 12/16/2025 10:34:37 AM

Amounts Expressed in Whole Dollars		<u>Private Purpose Trust</u>	<u>Investment Trust</u>	<u>Pension Trust</u>	<u>Student Activity Custodial</u>
		<u>(71)</u>	<u>(72)</u>	<u>(73)</u>	<u>(81)</u>
Liabilities, Deferred Inflows Of Resources And Net Position					
Liabilities					
0400	Due to Other Funds				3,744
0410	Due to Other Governments, Primary Government and Component Units				
0420	Accounts Payable				
0430	Contracts Payable				
0450	Short-Term Payables				
0460	Payroll Accruals and Withholdings				
0480	Unearned Revenues				
0490	Other Current Liabilities				
Total Liabilities					\$3,744
0950	Deferred Inflows of Resources				
Net Position					
0791	Net Investment in Capital Assets				
0009	Restricted Net Position (0792 – 0798)	196			
0799	Unrestricted Net Position				217,479
Total Net Position		\$196			\$217,479
Total Liabilities, Deferred Inflows Of Resources And Net Position		\$196			\$221,223

LEA : 111444602 Mifflin County SD

Printed 12/16/2025 10:34:37 AM

Amounts Expressed in Whole Dollars		<u>Other Custodial</u> <u>(89)</u>	<u>Fiduciary Component Units</u> <u>(98)</u>	<u>Total Fiduciary Funds</u>
Liabilities, Deferred Inflows Of Resources And Net Position				
Liabilities				
0400	Due to Other Funds			3,744
0410	Due to Other Governments, Primary Government and Component Units			
0420	Accounts Payable			
0430	Contracts Payable			
0450	Short-Term Payables			
0460	Payroll Accruals and Withholdings			
0480	Unearned Revenues			
0490	Other Current Liabilities			
Total Liabilities				\$3,744
0950	Deferred Inflows of Resources			
Net Position				
0791	Net Investment in Capital Assets			
0009	Restricted Net Position (0792 – 0798)			196
0799	Unrestricted Net Position			217,479
Total Net Position				\$217,675
Total Liabilities, Deferred Inflows Of Resources And Net Position				\$221,419

LEA : 111444602 Mifflin County SD

Printed 12/16/2025 10:34:38 AM

Amounts Expressed in Whole Dollars		<u>Private Purpose Trust</u> <u>(71)</u>	<u>Investment Trust</u> <u>(72)</u>	<u>Pension Trust</u> <u>(73)</u>	<u>Student Activity</u> <u>Custodial</u> <u>(81)</u>	<u>Other Custodial</u> <u>(89)</u>	<u>Fiduciary Component</u> <u>Units</u> <u>(98)</u>
Additions							
0091	Gifts and Contributions	20,400			23,194		
0095	Net Investment Earnings	4			122		
0092	Other Additions				433,841		
Deductions							
0093	Scholarships Awarded	20,400					
0094	Other Deductions				466,212		
Change In Net Position		\$4			(\$9,055)		
0006	Net Position – Beginning of Fiscal Year	192			226,532		
0007	Net Position Held in Trust for Pension Benefits						
Net Position - End of Fiscal Year		\$196			\$217,477		

LEA : 111444602 Mifflin County SD

Printed 12/16/2025 10:34:38 AM

Amounts Expressed in Whole Dollars		<u>Total Fiduciary</u>
		<u>Funds</u>
Additions		
0091	Gifts and Contributions	43,594
0095	Net Investment Earnings	126
0092	Other Additions	433,841
Deductions		
0093	Scholarships Awarded	20,400
0094	Other Deductions	466,212
Change In Net Position		(\$9,051)
0006	Net Position – Beginning of Fiscal Year	226,724
0007	Net Position Held in Trust for Pension Benefits	
Net Position - End of Fiscal Year		\$217,673

	Revenue Reported In Current Year	Current Year Tax Accrual	Prior Year Tax Accrual	Taxes Collected In Current Year
Revenue from Local Sources				
6111 Current Real Estate Taxes	25,488,138.86			25,488,138.86
6112 Interim Real Estate Taxes	63,450.92			63,450.92
6113 Public Utility Realty Taxes	34,781.27			34,781.27
6114 Payments in Lieu of Current Taxes - State / Local	226,342.05			226,342.05
6120 Current Per Capita Taxes, Section 679	102,479.80			102,479.80
6141 Current Act 511 Per Capita Taxes	102,479.80			102,479.80
6143 Current Act 511 Local Services Taxes	83,477.45			83,477.45
6151 Current Act 511 Earned Income Taxes	8,788,159.79			8,788,159.79
6153 Current Act 511 Real Estate Transfer Taxes	688,497.72			688,497.72
6411 Delinquent Real Estate Taxes	1,535,839.71			1,535,839.71
6420 Delinquent Per Capita Taxes, Section 679	20,885.85			20,885.85
6440 Delinquent Local Enabling Taxes - Flat Rate Assessments	20,934.30			20,934.30
6500 Earnings on Investments	1,534,817.32			
6700 Revenues from LEA Activities	65,990.80			
6832 Federal IDEA Revenue Received as Pass Through	909,287.11			
6910 Rentals	12,571.00			
6920 Contributions and Donations from Private Sources	2,202,400.00			
6942 Summer School Tuition	8,270.00			
6962 Other Services Provided Other Pennsylvania LEAs	57,051.39			
6999 Other Revenues Not Specified Above	205,662.48			
TOTAL Revenue from Local Sources	\$42,151,517.62			\$37,155,467.52

	Revenue Reported In Current Year			
<u>Revenue from State Sources</u>				
	27,077,874.91			
	247,816.05			
7271 Special Education funds for School-Aged Pupils	4,455,001.82			
	54.69			
	165,165.00			
	88,287.97			
	2,910,814.05			
	98,838.00			
7531 Ready to Learn-Foundation	968,914.00			
	2,504,349.31			
	1,480,365.14			
	\$54,670,404.68			

	Revenue Reported In Current Year			
<u>Revenue from Federal Sources</u>				
8514 Title I - Improving the Academic Achievement of the Disadvantaged	2,735,244.91			
8515 Title II - Preparing, Training, and Recruiting High Quality Teachers and Principals	268,875.28			
8516 Title III - Language Instruction for English Learners and Immigrant Students	11,953.01			
8517 Title IV - 21st Century Schools	242,938.27			
8744 ARP ESSER - Elementary and Secondary School Emergency Relief Fund	535,165.71			
8749 Other CARES Act Funding	73,595.57			
8751 ARP ESSER Learning Loss	129,080.39			
8754 ARP ESSER Homeless Children and Youth Funds	5,549.83			
8810 School-Based Access Medicaid Reimbursement Program (SBAP) Reimbursements (Access)	124,029.51			
8820 Medical Assistance Reimbursement for Administrative Claiming (Quarterly) Program	42,172.32			
TOTAL Revenue from Federal Sources	\$4,168,604.80			

					Revenue Reported In Current Year					
<u>Other Financing Sources</u>										
9220	Leases and Other Right-to-Use Arrangements				151,356.60					
9340	Debt Service Fund Transfers				3,412,763.00					
9990	Insurance Recoveries				25,000.00					
TOTAL Other Financing Sources					\$3,589,119.60					
TOTAL FROM ALL SOURCES					\$104,579,646.70	\$37,155,467.52				

LEA : 111444602 Mifflin County SD

Printed 12/16/2025 10:34:42 AM

	<u>General Fund (10)</u>	<u>Student Sponsored Activity Fund (21)</u>	<u>Public Purpose Trust (27)</u>	<u>Other Compt Approved (28)</u>	<u>Athletic / Activity (29)</u>	<u>Capital Reserve (690, 1850) (31)</u>
6000 Revenue from Local Sources						
6111 Current Real Estate Taxes	25,488,138.86					
6112 Interim Real Estate Taxes	63,450.92					
6113 Public Utility Realty Taxes	34,781.27					
6114 Payments in Lieu of Current Taxes - State / Local	226,342.05					
6120 Current Per Capita Taxes, Section 679	102,479.80					
6141 Current Act 511 Per Capita Taxes	102,479.80					
6143 Current Act 511 Local Services Taxes	83,477.45					
6151 Current Act 511 Earned Income Taxes	8,788,159.79					
6153 Current Act 511 Real Estate Transfer Taxes	688,497.72					
6411 Delinquent Real Estate Taxes	1,535,839.71					
6420 Delinquent Per Capita Taxes, Section 679	20,885.85					
6440 Delinquent Local Enabling Taxes - Flat Rate Assessments	20,934.30					
6500 Earnings on Investments	1,534,817.32					
6700 Revenues from LEA Activities	65,990.80					
6832 Federal IDEA Revenue Received as Pass Through	909,287.11					
6910 Rentals	12,571.00					
6920 Contributions and Donations from Private Sources	2,202,400.00					
6942 Summer School Tuition	8,270.00					
6962 Other Services Provided Other Pennsylvania LEAs	57,051.39					
6999 Other Revenues Not Specified Above	205,662.48					
6000 Total Revenue from Local Sources	\$42,151,517.62					
7000 Revenue from State Sources						
7111 Basic Education Funding-Formula	27,077,874.91					
7140 Charter Schools	247,816.05					
7160 Tuition for Orphans Subsidy	105,828.57					
7271 Special Education funds for School-Aged Pupils	4,455,001.82					
7299 Program Revenues Not Listed Previously in the 7200 Series	54.69					
7311 Pupil Transportation Subsidy	3,949,182.23					
7312 Nonpublic and Charter School Pupil Transportation Subsidy	165,165.00					
7320 Rental and Sinking Fund Payments / Building Reimbursement Subsidy	1,147,335.59					
7331 State Reimbursement for Health Services	88,287.97					
7332 Feminine Hygiene Product Funding	8,043.00					
7340 State Property Tax Reduction Allocation	2,910,814.05					
7361 School Safety and Security Grants	98,838.00					
7362 School Mental Health & Safety and Security Grants	69,857.99					

LEA : 111444602 Mifflin County SD

Printed 12/16/2025 10:34:42 AM

	<u>Capital Reserve</u> <u>(1431) (32)</u>	<u>Other Capital</u> <u>Projects Fund (39)</u>	<u>Debt Service (40)</u>	<u>Permanent (90)</u>	<u>Total</u>
6000 Revenue from Local Sources					
6111 Current Real Estate Taxes					25,488,138.86
6112 Interim Real Estate Taxes					63,450.92
6113 Public Utility Realty Taxes					34,781.27
6114 Payments in Lieu of Current Taxes - State / Local					226,342.05
6120 Current Per Capita Taxes, Section 679					102,479.80
6141 Current Act 511 Per Capita Taxes					102,479.80
6143 Current Act 511 Local Services Taxes					83,477.45
6151 Current Act 511 Earned Income Taxes					8,788,159.79
6153 Current Act 511 Real Estate Transfer Taxes					688,497.72
6411 Delinquent Real Estate Taxes					1,535,839.71
6420 Delinquent Per Capita Taxes, Section 679					20,885.85
6440 Delinquent Local Enabling Taxes - Flat Rate Assessments					20,934.30
6500 Earnings on Investments		395,705.94			1,930,523.26
6700 Revenues from LEA Activities					65,990.80
6832 Federal IDEA Revenue Received as Pass Through					909,287.11
6910 Rentals					12,571.00
6920 Contributions and Donations from Private Sources					2,202,400.00
6942 Summer School Tuition					8,270.00
6962 Other Services Provided Other Pennsylvania LEAs					57,051.39
6999 Other Revenues Not Specified Above					205,662.48
6000 Total Revenue from Local Sources		\$395,705.94			\$42,547,223.56
7000 Revenue from State Sources					
7111 Basic Education Funding-Formula					27,077,874.91
7140 Charter Schools					247,816.05
7160 Tuition for Orphans Subsidy					105,828.57
7271 Special Education funds for School-Aged Pupils					4,455,001.82
7299 Program Revenues Not Listed Previously in the 7200 Series					54.69
7311 Pupil Transportation Subsidy					3,949,182.23
7312 Nonpublic and Charter School Pupil Transportation Subsidy					165,165.00
7320 Rental and Sinking Fund Payments / Building Reimbursement Subsidy					1,147,335.59
7331 State Reimbursement for Health Services					88,287.97
7332 Feminine Hygiene Product Funding					8,043.00
7340 State Property Tax Reduction Allocation					2,910,814.05
7361 School Safety and Security Grants					98,838.00
7362 School Mental Health & Safety and Security Grants					69,857.99

LEA : 111444602 Mifflin County SD

Printed 12/16/2025 10:34:42 AM

	<u>General Fund (10)</u>	<u>Student Sponsored Activity Fund (21)</u>	<u>Public Purpose Trust (27)</u>	<u>Other Compt Approved (28)</u>	<u>Athletic / Activity (29)</u>	<u>Capital Reserve (690, 1850) (31)</u>
7000 Revenue from State Sources						
7531 Ready to Learn-Foundation	968,914.00					
7532 Ready to Learn-Adequacy Supplement	2,504,349.31					
7599 Other State Revenue Not Listed Elsewhere in the 7000 Series	2,321,725.40					
7810 State Share of Social Security and Medicare Taxes	1,480,365.14					
7820 State Share of Retirement Contributions	7,070,950.96					
7000 Total Revenue from State Sources	\$54,670,404.68					
8000 Revenue from Federal Sources						
8514 Title I - Improving the Academic Achievement of the Disadvantaged	2,735,244.91					
8515 Title II - Preparing, Training, and Recruiting High Quality Teachers and Principals	268,875.28					
8516 Title III - Language Instruction for English Learners and Immigrant Students	11,953.01					
8517 Title IV - 21st Century Schools	242,938.27					
8744 ARP ESSER - Elementary and Secondary School Emergency Relief Fund	535,165.71					
8749 Other CARES Act Funding	73,595.57					
8751 ARP ESSER Learning Loss	129,080.39					
8754 ARP ESSER Homeless Children and Youth Funds	5,549.83					
8810 School-Based Access Medicaid Reimbursement Program (SBAP) Reimbursements (Access)	124,029.51					
8820 Medical Assistance Reimbursement for Administrative Claiming (Quarterly) Program	42,172.32					
8000 Total Revenue from Federal Sources	\$4,168,604.80					
9000 Other Financing Sources						
9110 Face Value of Bonds Issued						
9120 Proceeds from Refunding of Bonds						
9130 Bond Premiums						
9220 Leases and Other Right-to-Use Arrangements	151,356.60					
9310 General Fund Transfers						
9340 Debt Service Fund Transfers	3,412,763.00					
9990 Insurance Recoveries	25,000.00					
9000 Total Other Financing Sources	\$3,589,119.60					
Total From All Sources	\$104,579,646.70					

LEA : 111444602 Mifflin County SD

Printed 12/16/2025 10:34:42 AM

	<u>Capital Reserve</u> <u>(1431) (32)</u>	<u>Other Capital</u> <u>Projects Fund (39)</u>	<u>Debt Service (40)</u>	<u>Permanent (90)</u>	<u>Total</u>
7000 Revenue from State Sources					
7531 Ready to Learn-Foundation					968,914.00
7532 Ready to Learn-Adequacy Supplement					2,504,349.31
7599 Other State Revenue Not Listed Elsewhere in the 7000 Series					2,321,725.40
7810 State Share of Social Security and Medicare Taxes					1,480,365.14
7820 State Share of Retirement Contributions					7,070,950.96
7000 Total Revenue from State Sources					\$54,670,404.68
8000 Revenue from Federal Sources					
8514 Title I - Improving the Academic Achievement of the Disadvantaged					2,735,244.91
8515 Title II - Preparing, Training, and Recruiting High Quality Teachers and Principals					268,875.28
8516 Title III - Language Instruction for English Learners and Immigrant Students					11,953.01
8517 Title IV - 21st Century Schools					242,938.27
8744 ARP ESSER - Elementary and Secondary School Emergency Relief Fund					535,165.71
8749 Other CARES Act Funding					73,595.57
8751 ARP ESSER Learning Loss					129,080.39
8754 ARP ESSER Homeless Children and Youth Funds					5,549.83
8810 School-Based Access Medicaid Reimbursement Program (SBAP) Reimbursements (Access)					124,029.51
8820 Medical Assistance Reimbursement for Administrative Claiming (Quarterly) Program					42,172.32
8000 Total Revenue from Federal Sources					\$4,168,604.80
9000 Other Financing Sources					
9110 Face Value of Bonds Issued			3,412,763.00		3,412,763.00
9120 Proceeds from Refunding of Bonds			12,505,000.00		12,505,000.00
9130 Bond Premiums			667,764.95		667,764.95
9220 Leases and Other Right-to-Use Arrangements					151,356.60
9310 General Fund Transfers		10,669,238.15			10,669,238.15
9340 Debt Service Fund Transfers					3,412,763.00
9990 Insurance Recoveries					25,000.00
9000 Total Other Financing Sources		\$10,669,238.15	\$16,585,527.95		\$30,843,885.70
Total From All Sources		\$11,064,944.09	\$16,585,527.95		\$132,230,118.74

LEA : 111444602 Mifflin County SD

Printed 12/16/2025 10:34:44 AM

	<u>General Fund (10)</u>	<u>Student Sponsored Activity Fund (21)</u>	<u>Public Purpose Trust (27)</u>	<u>Other Compt Approved (28)</u>	<u>Athletic / Activity (29)</u>	<u>Capital Reserve (690. 1850) (31)</u>
Revenue from Local Sources	42,151,517.62					
Revenue from State Sources	54,670,404.68					
Revenue from Federal Sources	4,168,604.80					
Other Financing Sources	3,589,119.60					
Total From All Sources	\$104,579,646.70					

LEA : 111444602 Mifflin County SD

Printed 12/16/2025 10:34:44 AM

	<u>Capital Reserve (1431)</u> <u>(32)</u>	<u>Other Capital Projects</u> <u>Fund (39)</u>	<u>Debt Service (40)</u>	<u>Permanent (90)</u>	<u>Total</u>
Revenue from Local Sources		395,705.94			42,547,223.56
Revenue from State Sources					54,670,404.68
Revenue from Federal Sources					4,168,604.80
Other Financing Sources		10,669,238.15	16,585,527.95		30,843,885.70
Total From All Sources		\$11,064,944.09	\$16,585,527.95		\$132,230,118.74

LEA : 111444602 Mifflin County SD

Printed 12/16/2025 10:34:48 AM

General Fund (10)

1000 Instruction		Total
100 <u>Personnel Services – Salaries</u>		
110	Official / Administrative Salaries	116,793.77
120	Professional – Educational	22,169,246.40
140	Technical	2,251,289.62
Total Personnel Services – Salaries		\$24,537,329.79
200 <u>Personnel Services – Employee Benefits</u>		
210	Group Insurance – Contracted Provider	7,035,665.72
220	Social Security Contributions	1,839,194.11
230	PSERS Retirement Contributions	8,258,075.24
250	Unemployment Compensation	43,878.40
260	Workers' Compensation	60,700.46
291	Other Retirement Plans	118,075.51
292	Health Savings Accounts	650,343.74
Total Personnel Services – Employee Benefits		\$18,005,933.18
300 <u>Purchased Professional and Technical Services</u>		
322	Professional Educational Services – Ius	67,129.11
323	Professional Educational Services – Other Educational Agencies	336,200.00
329	Professional Educational Services – Other	751,557.34
330	Other Professional Services	1,140.00
Total Purchased Professional and Technical Services		\$1,156,026.45
400 <u>Purchased Property Services</u>		
430	Repairs and Maintenance Services	37,086.87
440	Rentals	8,391.47
Total Purchased Property Services		\$45,478.34
500 <u>Other Purchased Services</u>		
510	Student Transportation Services	170,556.47
530	Communications	65,210.52
550	Printing and Binding	9,918.30
561	Tuition To Other School Districts Within the State	1,319,242.60
562	Tuition To Pennsylvania Charter Schools	4,945,193.65
564	Tuition To Career and Technology Centers	2,176,629.00
568	Tuition To Private Residential Rehabilitative Institutions (PRRI) [In-State] and Detention Centers	122,472.14
580	Travel	12,588.99
592	Services Purchased From Another LEA Within the State	5,719.00
594	IU Payment By Withholding for Institutionalized Children's Programs – Special Classes	4,991.81
Total Other Purchased Services		\$8,832,522.48
600 <u>Supplies</u>		
610	General Supplies	808,634.14
640	Books and Periodicals	449,045.59
650	Supplies & Fees – Technology Related	980,035.38
Total Supplies		\$2,237,715.11
700 <u>Property</u>		
738	Technology Software Lease and Other Right-to-Use Arrangements	151,356.60

LEA : 111444602 Mifflin County SD

Printed 12/16/2025 10:34:48 AM

General Fund (10)	
1000 Instruction	<u>Total</u>
700 <u>Property</u>	
752 Capital Equipment – Original and Additional	40,815.11
Total Property	\$192,171.71
800 <u>Other Objects</u>	
810 Dues and Fees	2,224.00
Total Other Objects	\$2,224.00
Total 1000 Instruction	\$55,009,401.06

LEA : 111444602 Mifflin County SD

Printed 12/16/2025 10:34:48 AM

General Fund (10)

1100 Regular Programs – Elementary / Secondary	Elementary	Secondary	Federal	Total
100 Personnel Services – Salaries				
110 Official / Administrative Salaries	727.89			727.89
120 Professional – Educational	8,102,110.81	6,410,931.06	1,579,479.98	16,092,521.85
Total Personnel Services – Salaries	\$8,102,838.70	\$6,410,931.06	\$1,579,479.98	\$16,093,249.74
200 Personnel Services – Employee Benefits				
210 Group Insurance – Contracted Provider	2,111,079.25	1,682,383.24	526,474.55	4,319,937.04
220 Social Security Contributions	608,478.68	481,166.41	118,168.12	1,207,813.21
230 PSERS Retirement Contributions	2,714,508.34	2,470,877.84	267,121.87	5,452,508.05
250 Unemployment Compensation	16,204.62	7,624.17	3,158.70	26,987.49
260 Workers' Compensation	19,347.12	13,766.43	7,897.62	41,011.17
291 Other Retirement Plans	70,625.00	41,575.00		112,200.00
292 Health Savings Accounts	194,858.94	152,160.44	42,682.50	389,701.88
	\$5,735,101.95	\$4,849,553.53	\$965,503.36	\$11,550,158.84
300 Purchased Professional and Technical Services				
323 Professional Educational Services – Other Educational Agencies		80,269.23		80,269.23
329 Professional Educational Services – Other	259,527.38	231,377.45		490,904.83
Total Purchased Professional and Technical Services	\$259,527.38	\$311,646.68		\$571,174.06
400 Purchased Property Services				
430 Repairs and Maintenance Services	12,435.53	23,932.37		36,367.90
440 Rentals	4,419.94	3,971.53		8,391.47
Total Purchased Property Services	\$16,855.47	\$27,903.90		\$44,759.37
500 Other Purchased Services				
510 Student Transportation Services	92,086.54	10,650.93		102,737.47
530 Communications	32,243.81	32,123.96		64,367.77
550 Printing and Binding	2,263.34	7,654.96		9,918.30
561 Tuition To Other School Districts Within the State		88,891.05		88,891.05
562 Tuition To Pennsylvania Charter Schools		2,540,097.05		2,540,097.05
580 Travel	2,150.85	3,143.02	40.74	5,334.61
Total Other Purchased Services	\$128,744.54	\$2,682,560.97	\$40.74	\$2,811,346.25
600 Supplies				
610 General Supplies	226,755.66	218,354.98	231,052.11	676,162.75
640 Books and Periodicals	113,266.74	16,946.94		130,213.68
650 Supplies & Fees – Technology Related	556,078.74	423,956.64		980,035.38
Total Supplies	\$896,101.14	\$659,258.56	\$231,052.11	\$1,786,411.81
700 Property				
738 Technology Software Lease and Other Right-to-Use Arrangements	73,041.71	78,314.89		151,356.60
Total Property	\$73,041.71	\$78,314.89		\$151,356.60
Total 1100 Regular Programs – Elementary / Secondary	\$15,212,210.89	\$15,020,169.59	\$2,776,076.19	\$33,008,456.67

LEA : 111444602 Mifflin County SD

Printed 12/16/2025 10:34:48 AM

General Fund (10)

1110 Regular Programs

	Elementary	Secondary	Federal	Total
100 Personnel Services – Salaries				
110 Official / Administrative Salaries	727.89			727.89
120 Professional – Educational	8,102,110.81	6,410,931.06		14,513,041.87
Total Personnel Services – Salaries	\$8,102,838.70	\$6,410,931.06		\$14,513,769.76
200 Personnel Services – Employee Benefits				
210 Group Insurance – Contracted Provider	2,111,079.25	1,682,383.24	32,705.50	3,826,167.99
220 Social Security Contributions	608,478.68	481,166.41	(0.03)	1,089,645.06
230 PSERS Retirement Contributions	2,714,508.34	2,470,877.84	(0.01)	5,185,386.17
250 Unemployment Compensation	16,204.62	7,624.17	(0.01)	23,828.78
260 Workers' Compensation	19,347.12	13,766.43	0.02	33,113.57
291 Other Retirement Plans	70,625.00	41,575.00		112,200.00
292 Health Savings Accounts	194,858.94	152,160.44		347,019.38
	\$5,735,101.95	\$4,849,553.53	\$32,705.47	\$10,617,360.95
300 Purchased Professional and Technical Services				
323 Professional Educational Services – Other Educational Agencies		80,269.23		80,269.23
329 Professional Educational Services – Other	259,527.38	231,377.45		490,904.83
Total Purchased Professional and Technical Services	\$259,527.38	\$311,646.68		\$571,174.06
400 Purchased Property Services				
430 Repairs and Maintenance Services	12,435.53	23,932.37		36,367.90
440 Rentals	4,419.94	3,971.53		8,391.47
Total Purchased Property Services	\$16,855.47	\$27,903.90		\$44,759.37
500 Other Purchased Services				
510 Student Transportation Services	92,086.54	10,650.93		102,737.47
530 Communications	32,243.81	32,123.96		64,367.77
550 Printing and Binding	2,263.34	7,654.96		9,918.30
561 Tuition To Other School Districts Within the State		88,891.05		88,891.05
562 Tuition To Pennsylvania Charter Schools		2,540,097.05		2,540,097.05
580 Travel	2,150.85	3,143.02		5,293.87
Total Other Purchased Services	\$128,744.54	\$2,682,560.97		\$2,811,305.51
600 Supplies				
610 General Supplies	226,755.66	218,354.98	90,796.10	535,906.74
640 Books and Periodicals	113,266.74	16,946.94		130,213.68
650 Supplies & Fees – Technology Related	556,078.74	423,956.64		980,035.38
Total Supplies	\$896,101.14	\$659,258.56	\$90,796.10	\$1,646,155.80
700 Property				
738 Technology Software Lease and Other Right-to-Use Arrangements	73,041.71	78,314.89		151,356.60
Total Property	\$73,041.71	\$78,314.89		\$151,356.60
Total 1110 Regular Programs	\$15,212,210.89	\$15,020,169.59	\$123,501.57	\$30,355,882.05

LEA : 111444602 Mifflin County SD

Printed 12/16/2025 10:34:48 AM

General Fund (10)

1190 Federally-Funded Regular Programs	<u>Elementary</u>	<u>Secondary</u>	<u>Federal</u>	<u>Total</u>
100 <u>Personnel Services – Salaries</u>				
120 Professional – Educational			1,579,479.98	1,579,479.98
Total Personnel Services – Salaries			\$1,579,479.98	\$1,579,479.98
200 <u>Personnel Services – Employee Benefits</u>				
210 Group Insurance – Contracted Provider			493,769.05	493,769.05
220 Social Security Contributions			118,168.15	118,168.15
230 PSERS Retirement Contributions			267,121.88	267,121.88
250 Unemployment Compensation			3,158.71	3,158.71
260 Workers' Compensation			7,897.60	7,897.60
292 Health Savings Accounts			42,682.50	42,682.50
Total Personnel Services – Employee Benefits			\$932,797.89	\$932,797.89
500 <u>Other Purchased Services</u>				
580 Travel			40.74	40.74
Total Other Purchased Services			\$40.74	\$40.74
600 <u>Supplies</u>				
610 General Supplies			140,256.01	140,256.01
Total Supplies			\$140,256.01	\$140,256.01
Total 1190 Federally-Funded Regular Programs			\$2,652,574.62	\$2,652,574.62

LEA : 111444602 Mifflin County SD

Printed 12/16/2025 10:34:48 AM

General Fund (10)

1200 Special Programs – Elementary / Secondary

	Elementary	Secondary	Federal	Total
100 Personnel Services – Salaries				
110 Official / Administrative Salaries	1,789.56		4,000.00	5,789.56
120 Professional – Educational	2,855,804.87	1,789,494.35	52,367.00	4,697,666.22
140 Technical	1,255,654.37	561,088.28	434,546.97	2,251,289.62
Total Personnel Services – Salaries	\$4,113,248.80	\$2,350,582.63	\$490,913.97	\$6,954,745.40
200 Personnel Services – Employee Benefits				
210 Group Insurance – Contracted Provider	1,230,748.25	685,658.09	349,721.58	2,266,127.92
220 Social Security Contributions	308,020.84	176,310.63	36,399.20	520,730.67
230 PSERS Retirement Contributions	1,396,182.22	835,221.50	81,675.14	2,313,078.86
250 Unemployment Compensation	8,227.30	4,703.46	981.61	13,912.37
260 Workers' Compensation	8,832.17	5,031.79	2,453.77	16,317.73
291 Other Retirement Plans	5,275.51			5,275.51
292 Health Savings Accounts	124,508.63	67,491.36	29,250.00	221,249.99
Total Personnel Services – Employee Benefits	\$3,081,794.92	\$1,774,416.83	\$500,481.30	\$5,356,693.05
300 Purchased Professional and Technical Services				
322 Professional Educational Services – Ius	42,479.11		24,650.00	67,129.11
323 Professional Educational Services – Other Educational Agencies		255,930.77		255,930.77
329 Professional Educational Services – Other	152,337.13	75,892.85	100.88	228,330.86
330 Other Professional Services			1,140.00	1,140.00
Total Purchased Professional and Technical Services	\$194,816.24	\$331,823.62	\$25,890.88	
400 Purchased Property Services				
430 Repairs and Maintenance Services	392.20	326.77		718.97
Total Purchased Property Services	\$392.20	\$326.77		\$718.97
500 Other Purchased Services				
510 Student Transportation Services	1,696.31	66,122.69		67,819.00
530 Communications		218.57		218.57
561 Tuition To Other School Districts Within the State	36,373.13	1,193,978.42		1,230,351.55
562 Tuition To Pennsylvania Charter Schools		2,405,096.60		2,405,096.60
568 Tuition To Private Residential Rehabilitative Institutions (PRRI) [In-State] and Detention Centers	39,901.28			39,901.28
580 Travel	3,314.06	1,716.65		5,030.71
594 IU Payment By Withholding for Institutionalized Children's Programs – Special Classes	4,991.81			4,991.81
Total Other Purchased Services	\$86,276.59	\$3,667,132.93		\$3,753,409.52
600 Supplies				
610 General Supplies	46,857.25	17,981.01		64,838.26
Total Supplies	\$46,857.25	\$17,981.01		\$64,838.26
800 Other Objects				
810 Dues and Fees	2,096.65	127.35		2,224.00
Total Other Objects	\$2,096.65	\$127.35		\$2,224.00
Total 1200 Special Programs – Elementary / Secondary	\$7,525,482.65	\$8,142,391.14	\$1,017,286.15	\$16,685,159.94

LEA : 111444602 Mifflin County SD

Printed 12/16/2025 10:34:48 AM

General Fund (10)

1210 Life Skills Support

	Elementary	Secondary	Federal	Total
100 <u>Personnel Services – Salaries</u>				
110 Official / Administrative Salaries	1,368.48			1,368.48
120 Professional – Educational	207,229.43	235,092.22		442,321.65
140 Technical	235,553.78	189,123.16		424,676.94
Total Personnel Services – Salaries	\$444,151.69	\$424,215.38		\$868,367.07
200 <u>Personnel Services – Employee Benefits</u>				
210 Group Insurance – Contracted Provider	158,830.46	175,812.15		334,642.61
220 Social Security Contributions	33,471.77	31,846.76		65,318.53
230 PSERS Retirement Contributions	146,359.98	139,586.48		285,946.46
250 Unemployment Compensation	888.08	848.34		1,736.42
260 Workers' Compensation	953.69	910.99		1,864.68
291 Other Retirement Plans	526.65			526.65
292 Health Savings Accounts	13,667.58	14,592.69		28,260.27
Total Personnel Services – Employee Benefits	\$354,698.21	\$363,597.41		\$718,295.62
300 <u>Purchased Professional and Technical Services</u>				
329 Professional Educational Services – Other	15,504.73	30,316.91		45,821.64
Total Purchased Professional and Technical Services	\$15,504.73	\$30,316.91		\$45,821.64
500 <u>Other Purchased Services</u>				
510 Student Transportation Services	610.91	12,474.45		13,085.36
561 Tuition To Other School Districts Within the State	36,373.13	30,748.34		67,121.47
580 Travel		14.47		14.47
Total Other Purchased Services	\$36,984.04	\$43,237.26		\$80,221.30
600 <u>Supplies</u>				
610 General Supplies	5,023.47	1,755.16		6,778.63
Total Supplies	\$5,023.47	\$1,755.16		\$6,778.63
Total 1210 Life Skills Support	\$856,362.14	\$863,122.12		\$1,719,484.26

LEA : 111444602 Mifflin County SD

Printed 12/16/2025 10:34:48 AM

General Fund (10)

1220 Sensory Support

	<u>Elementary</u>	<u>Secondary</u>	<u>Federal</u>	<u>Total</u>
100 <u>Personnel Services – Salaries</u>				
120 Professional – Educational	542,018.57	108,280.17		650,298.74
Total Personnel Services – Salaries	\$542,018.57	\$108,280.17		\$650,298.74
200 <u>Personnel Services – Employee Benefits</u>				
210 Group Insurance – Contracted Provider	128,398.27	19,354.57		147,752.84
220 Social Security Contributions	40,456.47	8,021.90		48,478.37
230 PSERS Retirement Contributions	182,510.20	35,559.69		218,069.89
250 Unemployment Compensation	1,084.49	217.06		1,301.55
260 Workers' Compensation	1,162.96	231.97		1,394.93
292 Health Savings Accounts	11,910.71	1,776.77		13,687.48
Total Personnel Services – Employee Benefits	\$365,523.10	\$65,161.96		\$430,685.06
300 <u>Purchased Professional and Technical Services</u>				
329 Professional Educational Services – Other	49,603.02			49,603.02
Total Purchased Professional and Technical Services	\$49,603.02			\$49,603.02
400 <u>Purchased Property Services</u>				
430 Repairs and Maintenance Services	392.20	326.77		718.97
Total Purchased Property Services	\$392.20	\$326.77		\$718.97
500 <u>Other Purchased Services</u>				
580 Travel	1,182.32	607.39		1,789.71
Total Other Purchased Services	\$1,182.32	\$607.39		\$1,789.71
600 <u>Supplies</u>				
610 General Supplies	7,577.06	452.11		8,029.17
Total Supplies	\$7,577.06	\$452.11		\$8,029.17
800 <u>Other Objects</u>				
810 Dues and Fees	2,096.65	127.35		2,224.00
Total Other Objects	\$2,096.65	\$127.35		\$2,224.00
Total 1220 Sensory Support	\$968,392.92	\$174,955.75		\$1,143,348.67

LEA : 111444602 Mifflin County SD

Printed 12/16/2025 10:34:48 AM

General Fund (10)

1230 Emotional Support

	<u>Elementary</u>	<u>Secondary</u>	<u>Federal</u>	<u>Total</u>
100 <u>Personnel Services – Salaries</u>				
110 Official / Administrative Salaries	421.08			421.08
120 Professional – Educational	742,459.86	267,690.59	52,367.00	1,062,517.45
140 Technical	730,266.40	178,469.24	9,529.57	918,265.21
Total Personnel Services – Salaries	\$1,473,147.34	\$446,159.83	\$61,896.57	\$1,981,203.74
200 <u>Personnel Services – Employee Benefits</u>				
210 Group Insurance – Contracted Provider	498,904.64	135,940.98	14,953.49	649,799.11
220 Social Security Contributions	110,775.79	33,526.62	4,672.85	148,975.26
230 PSERS Retirement Contributions	486,664.44	156,324.03	10,313.10	653,301.57
250 Unemployment Compensation	2,946.44	892.28	123.80	3,962.52
260 Workers’ Compensation	3,163.29	942.60	309.46	4,415.35
291 Other Retirement Plans	2,438.86			2,438.86
292 Health Savings Accounts	50,496.11	13,490.93		63,987.04
Total Personnel Services – Employee Benefits	\$1,155,389.57	\$341,117.44	\$30,372.70	\$1,526,879.71
300 <u>Purchased Professional and Technical Services</u>				
329 Professional Educational Services – Other	19,117.15	4,081.19	100.88	23,299.22
330 Other Professional Services			1,140.00	1,140.00
Total Purchased Professional and Technical Services	\$19,117.15	\$4,081.19	\$1,240.88	\$24,439.22
500 <u>Other Purchased Services</u>				
510 Student Transportation Services		529.75		529.75
561 Tuition To Other School Districts Within the State		1,143,065.80		1,143,065.80
Total Other Purchased Services		\$1,143,595.55		\$1,143,595.55
600 <u>Supplies</u>				
610 General Supplies	18,599.12	5,769.49		24,368.61
Total Supplies	\$18,599.12	\$5,769.49		\$24,368.61
Total 1230 Emotional Support	\$2,666,253.18	\$1,940,723.50	\$93,510.15	\$4,700,486.83

LEA : 111444602 Mifflin County SD

Printed 12/16/2025 10:34:48 AM

General Fund (10)

1240 Academic Support

	Elementary	Secondary	Federal	Total
100 Personnel Services – Salaries				
110 Official / Administrative Salaries			4,000.00	4,000.00
120 Professional – Educational	1,175,793.69	1,082,142.01		2,257,935.70
140 Technical	289,834.19	193,495.88	425,017.40	908,347.47
Total Personnel Services – Salaries	\$1,465,627.88	\$1,275,637.89	\$429,017.40	\$3,170,283.17
200 Personnel Services – Employee Benefits				
210 Group Insurance – Contracted Provider	405,698.73	348,659.59	334,768.09	1,089,126.41
220 Social Security Contributions	109,063.72	95,585.55	31,726.35	236,375.62
230 PSERS Retirement Contributions	518,314.05	472,006.12	71,362.04	1,061,682.21
250 Unemployment Compensation	2,931.66	2,552.06	857.81	6,341.53
260 Workers' Compensation	3,147.33	2,739.36	2,144.31	8,031.00
291 Other Retirement Plans	2,310.00			2,310.00
292 Health Savings Accounts	44,937.61	36,908.83	29,250.00	111,096.44
Total Personnel Services – Employee Benefits	\$1,086,403.10	\$958,451.51	\$470,108.60	\$2,514,963.21
300 Purchased Professional and Technical Services				
323 Professional Educational Services – Other Educational Agencies		255,930.77		255,930.77
329 Professional Educational Services – Other	68,112.23	41,494.75		109,606.98
Total Purchased Professional and Technical Services	\$68,112.23	\$297,425.52		\$365,537.75
500 Other Purchased Services				
510 Student Transportation Services	1,085.40	53,118.49		54,203.89
530 Communications		218.57		218.57
561 Tuition To Other School Districts Within the State		20,164.28		20,164.28
562 Tuition To Pennsylvania Charter Schools		2,405,096.60		2,405,096.60
580 Travel	902.91	256.97		1,159.88
Total Other Purchased Services	\$1,988.31	\$2,478,854.91		\$2,480,843.22
600 Supplies				
610 General Supplies	8,474.49	7,276.33		15,750.82
Total Supplies	\$8,474.49	\$7,276.33		\$15,750.82
Total 1240 Academic Support	\$2,630,606.01	\$5,017,646.16	\$899,126.00	\$8,547,378.17

LEA : 111444602 Mifflin County SD

Printed 12/16/2025 10:34:48 AM

General Fund (10)

1241 Learning Support – Public

	Elementary	Secondary	Federal	Total
100 Personnel Services – Salaries				
110 Official / Administrative Salaries			4,000.00	4,000.00
120 Professional – Educational	1,126,344.06	1,062,874.36		2,189,218.42
140 Technical	289,834.19	193,495.88	425,017.40	908,347.47
Total Personnel Services – Salaries	\$1,416,178.25	\$1,256,370.24	\$429,017.40	\$3,101,565.89
200 Personnel Services – Employee Benefits				
210 Group Insurance – Contracted Provider	398,444.52	345,832.96	334,768.09	1,079,045.57
220 Social Security Contributions	105,429.70	94,169.43	31,726.35	231,325.48
230 PSERS Retirement Contributions	501,356.92	465,399.14	71,362.04	1,038,118.10
250 Unemployment Compensation	2,832.62	2,513.41	857.81	6,203.84
260 Workers' Compensation	3,041.22	2,697.94	2,144.31	7,883.47
291 Other Retirement Plans	2,310.00			2,310.00
292 Health Savings Accounts	44,128.05	36,593.38	29,250.00	109,971.43
Total Personnel Services – Employee Benefits	\$1,057,543.03	\$947,206.26	\$470,108.60	\$2,474,857.89
300 Purchased Professional and Technical Services				
323 Professional Educational Services – Other Educational Agencies		255,930.77		255,930.77
329 Professional Educational Services – Other	68,112.23	41,494.75		109,606.98
Total Purchased Professional and Technical Services	\$68,112.23	\$297,425.52		\$365,537.75
500 Other Purchased Services				
510 Student Transportation Services	1,085.40	53,118.49		54,203.89
530 Communications		218.57		218.57
561 Tuition To Other School Districts Within the State		20,164.28		20,164.28
562 Tuition To Pennsylvania Charter Schools		2,405,096.60		2,405,096.60
580 Travel	101.84	25.46		127.30
Total Other Purchased Services	\$1,187.24	\$2,478,623.40		\$2,479,810.64
600 Supplies				
610 General Supplies	8,064.62	7,130.39		15,195.01
Total Supplies	\$8,064.62	\$7,130.39		\$15,195.01
Total 1241 Learning Support – Public	\$2,551,085.37	\$4,986,755.81	\$899,126.00	\$8,436,967.18

LEA : 111444602 Mifflin County SD

Printed 12/16/2025 10:34:48 AM

General Fund (10)

1243 Gifted Support

	<u>Elementary</u>	<u>Secondary</u>	<u>Federal</u>	<u>Total</u>
100 <u>Personnel Services – Salaries</u>				
120 Professional – Educational	49,449.63	19,267.65		68,717.28
Total Personnel Services – Salaries	\$49,449.63	\$19,267.65		\$68,717.28
200 <u>Personnel Services – Employee Benefits</u>				
210 Group Insurance – Contracted Provider	7,254.21	2,826.63		10,080.84
220 Social Security Contributions	3,634.02	1,416.12		5,050.14
230 PSERS Retirement Contributions	16,957.13	6,606.98		23,564.11
250 Unemployment Compensation	99.04	38.65		137.69
260 Workers' Compensation	106.11	41.42		147.53
292 Health Savings Accounts	809.56	315.45		1,125.01
Total Personnel Services – Employee Benefits	\$28,860.07	\$11,245.25		\$40,105.32
500 <u>Other Purchased Services</u>				
580 Travel	801.07	231.51		1,032.58
Total Other Purchased Services	\$801.07	\$231.51		\$1,032.58
600 <u>Supplies</u>				
610 General Supplies	409.87	145.94		555.81
Total Supplies	\$409.87	\$145.94		\$555.81
Total 1243 Gifted Support	\$79,520.64	\$30,890.35		\$110,410.99

LEA : 111444602 Mifflin County SD

Printed 12/16/2025 10:34:48 AM

General Fund (10)

1260 Physical Support	Elementary	Secondary	Federal	Total
100 <u>Personnel Services – Salaries</u>				
120 Professional – Educational	188,303.32	96,289.36		284,592.68
Total Personnel Services – Salaries	\$188,303.32	\$96,289.36		\$284,592.68
200 <u>Personnel Services – Employee Benefits</u>				
210 Group Insurance – Contracted Provider	38,916.15	5,890.80		44,806.95
220 Social Security Contributions	14,253.09	7,329.80		21,582.89
230 PSERS Retirement Contributions	62,333.55	31,745.18		94,078.73
250 Unemployment Compensation	376.63	193.72		570.35
260 Workers' Compensation	404.90	206.87		611.77
292 Health Savings Accounts	3,496.62	722.14		4,218.76
Total Personnel Services – Employee Benefits	\$119,780.94	\$46,088.51		\$165,869.45
500 <u>Other Purchased Services</u>				
580 Travel	1,228.83	837.82		2,066.65
Total Other Purchased Services	\$1,228.83	\$837.82		\$2,066.65
600 <u>Supplies</u>				
610 General Supplies	7,183.11	2,727.92		9,911.03
Total Supplies	\$7,183.11	\$2,727.92		\$9,911.03
Total 1260 Physical Support	\$316,496.20	\$145,943.61		\$462,439.81

LEA : 111444602 Mifflin County SD

Printed 12/16/2025 10:34:48 AM

General Fund (10)

1290 Special Programs - Other Support	<u>Elementary</u>	<u>Secondary</u>	<u>Federal</u>	<u>Total</u>
300 <u>Purchased Professional and Technical Services</u>				
322 Professional Educational Services – Ius	42,479.11		24,650.00	67,129.11
Total Purchased Professional and Technical Services	\$42,479.11		\$24,650.00	\$67,129.11
500 <u>Other Purchased Services</u>				
568 Tuition To Private Residential Rehabilitative Institutions (PRRI) [In-State] and Detention Centers	39,901.28			39,901.28
594 IU Payment By Withholding for Institutionalized Children's Programs – Special Classes	4,991.81			4,991.81
Total Other Purchased Services	\$44,893.09			\$44,893.09
Total 1290 Special Programs - Other Support	\$87,372.20		\$24,650.00	\$112,022.20

LEA : 111444602 Mifflin County SD

Printed 12/16/2025 10:34:48 AM

General Fund (10)				
1300 Vocational Education	<u>Elementary</u>	<u>Secondary</u>	<u>Federal</u>	<u>Total</u>
100 <u>Personnel Services – Salaries</u>				
120 Professional – Educational		845,875.18		845,875.18
Total Personnel Services – Salaries		\$845,875.18		\$845,875.18
200 <u>Personnel Services – Employee Benefits</u>				
210 Group Insurance – Contracted Provider		269,109.71	6,470.50	275,580.21
220 Social Security Contributions		62,508.66		62,508.66
230 PSERS Retirement Contributions		285,983.88		285,983.88
250 Unemployment Compensation		1,691.47		1,691.47
260 Workers' Compensation		1,816.23		1,816.23
292 Health Savings Accounts		25,359.37		25,359.37
Total Personnel Services – Employee Benefits		\$646,469.32	\$6,470.50	\$652,939.82
300 <u>Purchased Professional and Technical Services</u>				
329 Professional Educational Services – Other		21,554.27		21,554.27
Total Purchased Professional and Technical Services		\$21,554.27		\$21,554.27
500 <u>Other Purchased Services</u>				
564 Tuition To Career and Technology Centers		2,176,629.00		2,176,629.00
Total Other Purchased Services		\$2,176,629.00		\$2,176,629.00
600 <u>Supplies</u>				
610 General Supplies		65,564.23		65,564.23
640 Books and Periodicals		5,061.00		5,061.00
Total Supplies		\$70,625.23		\$70,625.23
700 <u>Property</u>				
752 Capital Equipment – Original and Additional		40,815.11		40,815.11
Total Property		\$40,815.11		\$40,815.11
Total 1300 Vocational Education		\$3,801,968.11	\$6,470.50	\$3,808,438.61

LEA : 111444602 Mifflin County SD

Printed 12/16/2025 10:34:48 AM

General Fund (10)

1400 Other Instructional Programs – Elementary / Secondary	<u>Elementary</u>	<u>Secondary</u>	<u>Federal</u>	<u>Total</u>
100 <u>Personnel Services – Salaries</u>				
110 Official / Administrative Salaries		110,276.32		110,276.32
120 Professional – Educational	65,805.55	406,516.48	9,023.25	481,345.28
Total Personnel Services – Salaries	\$65,805.55	\$516,792.80	\$9,023.25	\$591,621.60
200 <u>Personnel Services – Employee Benefits</u>				
210 Group Insurance – Contracted Provider	179.10	120,527.59	28,272.54	148,979.23
220 Social Security Contributions	5,036.91	38,563.12	690.46	44,290.49
230 PSERS Retirement Contributions	21,108.57	175,080.04	1,529.43	197,718.04
250 Unemployment Compensation	131.67	1,033.61	18.05	1,183.33
260 Workers' Compensation	141.24	1,109.76	45.11	1,296.11
291 Other Retirement Plans		600.00		600.00
292 Health Savings Accounts		12,187.50		12,187.50
	\$26,597.49	\$349,101.62	\$30,555.59	
300 <u>Purchased Professional and Technical Services</u>				
329 Professional Educational Services – Other	504.40	10,262.98		10,767.38
Total Purchased Professional and Technical Services	\$504.40	\$10,262.98		\$10,767.38
500 <u>Other Purchased Services</u>				
530 Communications		624.18		624.18
568 Tuition To Private Residential Rehabilitative Institutions (PRRI) [In-State] and Detention Centers		82,570.86		82,570.86
580 Travel		27.30		27.30
Total Other Purchased Services		\$83,222.34		\$83,222.34
600 <u>Supplies</u>				
610 General Supplies		1,200.20		1,200.20
640 Books and Periodicals	10,146.76	303,624.15		313,770.91
Total Supplies	\$10,146.76	\$304,824.35		\$314,971.11
Total 1400 Other Instructional Programs – Elementary / Secondary	\$103,054.20	\$1,264,204.09	\$39,578.84	\$1,406,837.13

LEA : 111444602 Mifflin County SD

Printed 12/16/2025 10:34:48 AM

General Fund (10)

1440 Alternative Regular Education Programs	<u>Elementary</u>	<u>Secondary</u>	<u>Federal</u>	<u>Total</u>
100 <u>Personnel Services – Salaries</u>				
110 Official / Administrative Salaries		110,276.32		110,276.32
120 Professional – Educational	65,805.55	406,516.48	9,023.25	481,345.28
Total Personnel Services – Salaries	\$65,805.55	\$516,792.80	\$9,023.25	\$591,621.60
200 <u>Personnel Services – Employee Benefits</u>				
210 Group Insurance – Contracted Provider	179.10	120,527.59	28,272.54	148,979.23
220 Social Security Contributions	5,036.91	38,563.12	690.46	44,290.49
230 PSERS Retirement Contributions	21,108.57	175,080.04	1,529.43	197,718.04
250 Unemployment Compensation	131.67	1,033.61	18.05	1,183.33
260 Workers' Compensation	141.24	1,109.76	45.11	1,296.11
291 Other Retirement Plans		600.00		600.00
292 Health Savings Accounts		12,187.50		12,187.50
	\$26,597.49	\$349,101.62	\$30,555.59	
300 <u>Purchased Professional and Technical Services</u>				
329 Professional Educational Services – Other	504.40	10,262.98		10,767.38
Total Purchased Professional and Technical Services	\$504.40	\$10,262.98		\$10,767.38
500 <u>Other Purchased Services</u>				
530 Communications		624.18		624.18
568 Tuition To Private Residential Rehabilitative Institutions (PRRI) [In-State] and Detention Centers		82,570.86		82,570.86
580 Travel		27.30		27.30
Total Other Purchased Services		\$83,222.34		\$83,222.34
600 <u>Supplies</u>				
610 General Supplies		1,200.20		1,200.20
640 Books and Periodicals	10,146.76	303,624.15		313,770.91
Total Supplies	\$10,146.76	\$304,824.35		\$314,971.11
Total 1440 Alternative Regular Education Programs	\$103,054.20	\$1,264,204.09	\$39,578.84	\$1,406,837.13

LEA : 111444602 Mifflin County SD

Printed 12/16/2025 10:34:48 AM

General Fund (10)

1441 Adjudicated / Court-Placed Programs	<u>Elementary</u>	<u>Secondary</u>	<u>Federal</u>	<u>Total</u>
500 <u>Other Purchased Services</u>				
568 Tuition To Private Residential Rehabilitative Institutions (PRRI) [In-State] and Detention Centers		18,970.86		18,970.86
Total Other Purchased Services		\$18,970.86		\$18,970.86
Total 1441 Adjudicated / Court-Placed Programs		\$18,970.86		\$18,970.86

LEA : 111444602 Mifflin County SD

Printed 12/16/2025 10:34:48 AM

General Fund (10)

1442 Alternative Education Programs	Elementary	Secondary	Federal	Total
100 Personnel Services – Salaries				
110 Official / Administrative Salaries		110,276.32		110,276.32
120 Professional – Educational	65,805.55	406,516.48	9,023.25	481,345.28
Total Personnel Services – Salaries	\$65,805.55	\$516,792.80	\$9,023.25	\$591,621.60
200 Personnel Services – Employee Benefits				
210 Group Insurance – Contracted Provider	179.10	120,527.59	28,272.54	148,979.23
220 Social Security Contributions	5,036.91	38,563.12	690.46	44,290.49
230 PSERS Retirement Contributions	21,108.57	175,080.04	1,529.43	197,718.04
250 Unemployment Compensation	131.67	1,033.61	18.05	1,183.33
260 Workers' Compensation	141.24	1,109.76	45.11	1,296.11
291 Other Retirement Plans		600.00		600.00
292 Health Savings Accounts		12,187.50		12,187.50
	\$26,597.49	\$349,101.62	\$30,555.59	
300 Purchased Professional and Technical Services				
329 Professional Educational Services – Other	504.40	10,262.98		10,767.38
Total Purchased Professional and Technical Services	\$504.40	\$10,262.98		\$10,767.38
500 Other Purchased Services				
530 Communications		624.18		624.18
568 Tuition To Private Residential Rehabilitative Institutions (PRRI) [In-State] and Detention Centers		63,600.00		63,600.00
580 Travel		27.30		27.30
Total Other Purchased Services		\$64,251.48		\$64,251.48
600 Supplies				
610 General Supplies		1,200.20		1,200.20
640 Books and Periodicals	10,146.76	303,624.15		313,770.91
Total Supplies	\$10,146.76	\$304,824.35		\$314,971.11
Total 1442 Alternative Education Programs	\$103,054.20	\$1,245,233.23	\$39,578.84	\$1,387,866.27

LEA : 111444602 Mifflin County SD

Printed 12/16/2025 10:34:48 AM

General Fund (10)					
1500 Nonpublic School Programs		Elementary	Secondary	Federal	Total
100 <u>Personnel Services – Salaries</u>					
120 Professional – Educational				51,837.87	51,837.87
Total Personnel Services – Salaries				\$51,837.87	\$51,837.87
200 <u>Personnel Services – Employee Benefits</u>					
210 Group Insurance – Contracted Provider				25,041.32	25,041.32
220 Social Security Contributions				3,851.08	3,851.08
230 PSERS Retirement Contributions				8,786.41	8,786.41
250 Unemployment Compensation				103.74	103.74
260 Workers' Compensation				259.22	259.22
292 Health Savings Accounts				1,845.00	1,845.00
Total Personnel Services – Employee Benefits				\$39,886.77	\$39,886.77
500 <u>Other Purchased Services</u>					
580 Travel				2,196.37	2,196.37
592 Services Purchased From Another LEA Within the State				5,719.00	5,719.00
Total Other Purchased Services				\$7,915.37	\$7,915.37
600 <u>Supplies</u>					
610 General Supplies				868.70	868.70
Total Supplies				\$868.70	\$868.70
Total 1500 Nonpublic School Programs				\$100,508.71	\$100,508.71

LEA : 111444602 Mifflin County SD

Printed 12/16/2025 10:35:00 AM

General Fund (10)

2000 Support Services

Total

100	<u>Personnel Services – Salaries</u>	
100	Personnel Services – Salaries	9,208,876.31
Total Personnel Services – Salaries		\$9,208,876.31
200	<u>Personnel Services – Employee Benefits</u>	
210	Group Insurance – Contracted Provider	2,767,711.37
220	Social Security Contributions	692,936.49
230	PSERS Retirement Contributions	3,019,443.03
240	Tuition Reimbursement	300,872.05
250	Unemployment Compensation	18,274.77
260	Workers' Compensation	20,838.61
291	Other Retirement Plans	34,983.51
292	Health Savings Accounts	273,492.75
299	All Other Employee Benefits	(8,421.62)
Total Personnel Services – Employee Benefits		\$7,120,130.96
300	<u>Purchased Professional and Technical Services</u>	
310	Official / Administrative Services	240,961.54
329	Professional Educational Services – Other	407,996.99
330	Other Professional Services	230,985.04
340	Technical Services	126,613.00
350	Security / Safety Services	171,708.03
360	Employee Training and Development Services	106,938.73
390	Other Purchased Professional and Technical Services	1,648.81
Total Purchased Professional and Technical Services		\$1,286,852.14
400	<u>Purchased Property Services</u>	
410	Cleaning Services	46,531.18
420	Utility Services	103,119.02
430	Repairs and Maintenance Services	934,799.73
440	Rentals	5,584.86
450	Construction Services	85,189.79
Total Purchased Property Services		\$1,175,224.58
500	<u>Other Purchased Services</u>	
513	Contracted Carriers	5,523,624.79
516	Student Transportation Services From the IU	87,789.22
520	Insurance – General	3,137.49
523	General Property and Liability Insurance	293,490.57
529	Other Insurance	63,857.99
530	Communications	61,851.66
549	Other Advertising/Public Relations	17,254.55
580	Travel	39,139.10
591	Services Purchased Locally	525.01
Total Other Purchased Services		\$6,090,670.38
600	<u>Supplies</u>	
610	General Supplies	484,971.86
620	Energy	671,955.91

LEA : 111444602 Mifflin County SD

Printed 12/16/2025 10:35:00 AM

General Fund (10)

2000 Support Services

Total

600	<u>Supplies</u>	
640	Books and Periodicals	31,129.76
650	Supplies & Fees – Technology Related	614,763.25
Total Supplies		\$1,802,820.78
700	<u>Property</u>	
752	Capital Equipment – Original and Additional	113,956.67
762	Capitalized Equipment - Replacement	277,268.09
766	Capitalized Technology Equipment – Replacement	120,749.29
Total Property		\$511,974.05
800	<u>Other Objects</u>	
810	Dues and Fees	48,998.98
820	Claims and Judgments Against the LEA	174,390.77
Total Other Objects		\$223,389.75
Total 2000 Support Services		\$27,419,938.95

LEA : 111444602 Mifflin County SD

Printed 12/16/2025 10:35:00 AM

General Fund (10)

2100 Support Services – Students	<u>Elementary</u>	<u>Secondary</u>	<u>Federal</u>	<u>Total</u>
100 <u>Personnel Services – Salaries</u>				
100 Personnel Services – Salaries	575,558.30	756,540.40	153,507.85	1,594,169.42
Total Personnel Services – Salaries	\$575,558.30	\$756,540.40	\$153,507.85	\$1,594,169.42
200 <u>Personnel Services – Employee Benefits</u>				
210 Group Insurance – Contracted Provider	138,852.20	205,918.69	67,841.70	444,913.98
220 Social Security Contributions	43,352.28	56,544.75	11,456.74	119,481.63
230 PSERS Retirement Contributions	191,456.34	254,562.85	26,019.59	506,446.64
250 Unemployment Compensation	1,151.02	1,513.11	307.47	3,188.26
260 Workers' Compensation	1,236.03	1,624.64	767.39	3,901.46
292 Health Savings Accounts	12,486.24	20,326.24	5,437.51	43,124.96
Total Personnel Services – Employee Benefits	\$388,534.11	\$540,490.28	\$111,830.40	\$1,121,056.93
300 <u>Purchased Professional and Technical Services</u>				
329 Professional Educational Services – Other	91,446.05	79,189.12		170,635.17
Total Purchased Professional and Technical Services	\$91,446.05	\$79,189.12		\$170,635.17
500 <u>Other Purchased Services</u>				
530 Communications			1,555.41	2,492.02
580 Travel	1,195.42	201.36	2,115.46	3,953.47
Total Other Purchased Services	\$1,195.42	\$201.36	\$3,670.87	\$6,445.49
600 <u>Supplies</u>				
610 General Supplies	6,096.97	4,801.56	5,549.83	16,448.36
Total Supplies	\$6,096.97	\$4,801.56	\$5,549.83	\$16,448.36
800 <u>Other Objects</u>				
810 Dues and Fees		114.99		114.99
Total Other Objects		\$114.99		\$114.99
Total 2100 Support Services – Students	\$1,062,830.85	\$1,381,337.71	\$274,558.95	\$2,908,870.36

LEA : 111444602 Mifflin County SD

Printed 12/16/2025 10:35:00 AM

General Fund (10)

2120 Guidance Services	<u>Elementary</u>	<u>Secondary</u>	<u>Federal</u>	<u>Total</u>
100 <u>Personnel Services – Salaries</u>				
100 Personnel Services – Salaries	338,534.16	584,919.86	52,506.05	975,960.07
Total Personnel Services – Salaries	\$338,534.16	\$584,919.86	\$52,506.05	\$975,960.07
200 <u>Personnel Services – Employee Benefits</u>				
210 Group Insurance – Contracted Provider	106,918.91	170,828.70	13,004.38	290,751.99
220 Social Security Contributions	25,505.43	43,576.89	3,954.32	73,036.64
230 PSERS Retirement Contributions	112,304.88	196,382.36	8,899.77	317,587.01
250 Unemployment Compensation	677.09	1,169.86	105.04	1,951.99
260 Workers' Compensation	727.01	1,256.02	262.60	2,245.63
292 Health Savings Accounts	9,188.55	16,780.20	1,125.00	27,093.75
Total Personnel Services – Employee Benefits	\$255,321.87	\$429,994.03	\$27,351.11	\$712,667.01
300 <u>Purchased Professional and Technical Services</u>				
329 Professional Educational Services – Other		78,104.00		78,104.00
Total Purchased Professional and Technical Services		\$78,104.00		\$78,104.00
600 <u>Supplies</u>				
610 General Supplies	1,271.00	526.16		1,797.16
Total Supplies	\$1,271.00	\$526.16		\$1,797.16
Total 2120 Guidance Services	\$595,127.03	\$1,093,544.05	\$79,857.16	\$1,768,528.24

LEA : 111444602 Mifflin County SD

Printed 12/16/2025 10:35:00 AM

General Fund (10)

2140 Psychological Services	Elementary	Secondary	Federal	Total
100 <u>Personnel Services – Salaries</u>				
100 Personnel Services – Salaries	237,024.14	171,620.54		408,644.68
Total Personnel Services – Salaries	\$237,024.14	\$171,620.54		\$408,644.68
200 <u>Personnel Services – Employee Benefits</u>				
210 Group Insurance – Contracted Provider	31,933.29	35,089.99		67,023.28
220 Social Security Contributions	17,846.85	12,967.86		30,814.71
230 PSERS Retirement Contributions	79,151.46	58,180.49		137,331.95
250 Unemployment Compensation	473.93	343.25		817.18
260 Workers' Compensation	509.02	368.62		877.64
292 Health Savings Accounts	3,297.69	3,546.04		6,843.73
Total Personnel Services – Employee Benefits	\$133,212.24	\$110,496.25		\$243,708.49
300 <u>Purchased Professional and Technical Services</u>				
329 Professional Educational Services – Other	89,055.84			89,055.84
Total Purchased Professional and Technical Services	\$89,055.84			\$89,055.84
500 <u>Other Purchased Services</u>				
580 Travel	1,195.42	201.36		1,396.78
Total Other Purchased Services	\$1,195.42	\$201.36		\$1,396.78
600 <u>Supplies</u>				
610 General Supplies	4,825.97	4,275.40		9,101.37
Total Supplies	\$4,825.97	\$4,275.40		\$9,101.37
800 <u>Other Objects</u>				
810 Dues and Fees		114.99		114.99
Total Other Objects		\$114.99		\$114.99
Total 2140 Psychological Services	\$465,313.61	\$286,708.54		\$752,022.15

LEA : 111444602 Mifflin County SD

Printed 12/16/2025 10:35:00 AM

General Fund (10)

2160 Social Work Services	<u>Elementary</u>	<u>Secondary</u>	<u>Federal</u>	<u>Total</u>
100 <u>Personnel Services – Salaries</u>				
100 Personnel Services – Salaries			101,001.80	209,564.67
Total Personnel Services – Salaries			\$101,001.80	\$209,564.67
200 <u>Personnel Services – Employee Benefits</u>				
210 Group Insurance – Contracted Provider			54,837.32	87,138.71
220 Social Security Contributions			7,502.42	15,630.28
230 PSERS Retirement Contributions			17,119.82	51,527.68
250 Unemployment Compensation			202.43	419.09
260 Workers' Compensation			504.79	778.19
292 Health Savings Accounts			4,312.51	9,187.48
Total Personnel Services – Employee Benefits			\$84,479.29	\$164,681.43
500 <u>Other Purchased Services</u>				
530 Communications			1,555.41	2,492.02
580 Travel			2,115.46	2,556.69
Total Other Purchased Services			\$3,670.87	\$5,048.71
600 <u>Supplies</u>				
610 General Supplies			5,549.83	5,549.83
Total Supplies			\$5,549.83	\$5,549.83
Total 2160 Social Work Services			\$194,701.79	\$384,844.64

LEA : 111444602 Mifflin County SD

Printed 12/16/2025 10:35:00 AM

General Fund (10)

2190 Other Student Services	<u>Elementary</u>	<u>Secondary</u>	<u>Federal</u>	<u>Total</u>
300 <u>Purchased Professional and Technical Services</u>				
329 Professional Educational Services – Other	2,390.21	1,085.12		3,475.33
Total Purchased Professional and Technical Services	\$2,390.21	\$1,085.12		\$3,475.33
Total 2190 Other Student Services	\$2,390.21	\$1,085.12		\$3,475.33

LEA : 111444602 Mifflin County SD

Printed 12/16/2025 10:35:00 AM

General Fund (10)

2200 Support Services – Instructional Staff

	Elementary	Secondary	Federal	Total
100 Personnel Services – Salaries				
100 Personnel Services – Salaries	453,795.32	267,405.97	113,347.36	834,548.65
Total Personnel Services – Salaries	\$453,795.32	\$267,405.97	\$113,347.36	\$834,548.65
200 Personnel Services – Employee Benefits				
210 Group Insurance – Contracted Provider	118,756.11	30,401.91	20,016.70	169,174.72
220 Social Security Contributions	33,820.89	20,254.20	8,620.22	62,695.31
230 PSERS Retirement Contributions	155,198.20	90,601.95	19,212.03	265,012.18
240 Tuition Reimbursement	134,138.39	138,344.16		272,482.55
250 Unemployment Compensation	907.30	534.82	226.50	1,668.62
260 Workers' Compensation	974.47	574.31	566.79	2,115.57
291 Other Retirement Plans	709.15	590.85		1,300.00
292 Health Savings Accounts	10,231.09	2,706.41	1,687.49	14,624.99
299 All Other Employee Benefits	(906.51)	(766.22)		(1,672.73)
	\$453,829.09	\$283,242.39	\$50,329.73	\$787,401.21
300 Purchased Professional and Technical Services				
329 Professional Educational Services – Other	102,018.14	87,249.01	1,665.00	190,932.15
360 Employee Training and Development Services	39,712.06	30,681.31	36,325.58	106,718.95
Total Purchased Professional and Technical Services	\$141,730.20	\$117,930.32	\$37,990.58	\$297,651.10
500 Other Purchased Services				
530 Communications	950.08	803.16		1,753.24
580 Travel	9,784.91	11,350.51	129.00	21,264.42
Total Other Purchased Services	\$10,734.99	\$12,153.67	\$129.00	\$23,017.66
600 Supplies				
610 General Supplies	9,632.11	5,097.74	16,776.29	31,506.14
640 Books and Periodicals	19,750.23	6,582.09	4,797.44	31,129.76
Total Supplies	\$29,382.34	\$11,679.83	\$21,573.73	\$62,635.90
800 Other Objects				
810 Dues and Fees	471.45	398.55		870.00
Total Other Objects	\$471.45	\$398.55		\$870.00
Total 2200 Support Services – Instructional Staff	\$1,089,943.39	\$692,810.73	\$223,370.40	\$2,006,124.52

LEA : 111444602 Mifflin County SD

Printed 12/16/2025 10:35:00 AM

General Fund (10)

2250 School Library Services	Elementary	Secondary	Federal	Total
100 <u>Personnel Services – Salaries</u>				
100 Personnel Services – Salaries	268,508.70	118,841.82		387,350.52
Total Personnel Services – Salaries	\$268,508.70	\$118,841.82		\$387,350.52
200 <u>Personnel Services – Employee Benefits</u>				
210 Group Insurance – Contracted Provider	94,744.89	10,103.83		104,848.72
220 Social Security Contributions	19,777.25	8,993.36		28,770.61
230 PSERS Retirement Contributions	91,024.43	39,087.71		130,112.14
250 Unemployment Compensation	537.00	237.66		774.66
260 Workers' Compensation	576.65	255.19		831.84
292 Health Savings Accounts	8,097.36	902.64		9,000.00
Total Personnel Services – Employee Benefits	\$214,757.58	\$59,580.39		\$274,337.97
300 <u>Purchased Professional and Technical Services</u>				
329 Professional Educational Services – Other	6,599.14	2,668.01		9,267.15
Total Purchased Professional and Technical Services	\$6,599.14	\$2,668.01		\$9,267.15
500 <u>Other Purchased Services</u>				
580 Travel	75.82	2.89		78.71
Total Other Purchased Services	\$75.82	\$2.89		\$78.71
600 <u>Supplies</u>				
610 General Supplies	7,632.34	3,417.01		11,049.35
640 Books and Periodicals	19,750.23	6,582.09	3,641.40	29,973.72
Total Supplies	\$27,382.57	\$9,999.10	\$3,641.40	\$41,023.07
Total 2250 School Library Services	\$517,323.81	\$191,092.21	\$3,641.40	\$712,057.42

LEA : 111444602 Mifflin County SD

Printed 12/16/2025 10:35:00 AM

General Fund (10)

2260 Instruction and Curriculum Development Services

	Elementary	Secondary	Federal	Total
100 Personnel Services – Salaries				
100 Personnel Services – Salaries	162,021.66	131,893.86	82,114.86	376,030.38
Total Personnel Services – Salaries	\$162,021.66	\$131,893.86	\$82,114.86	\$376,030.38
200 Personnel Services – Employee Benefits				
210 Group Insurance – Contracted Provider	24,011.22	20,298.08	20,016.70	64,326.00
220 Social Security Contributions	12,294.55	10,014.36	6,234.25	28,543.16
230 PSERS Retirement Contributions	56,286.94	45,863.00	13,918.36	116,068.30
250 Unemployment Compensation	323.79	263.82	164.09	751.70
260 Workers' Compensation	347.83	283.27	410.51	1,041.61
291 Other Retirement Plans	709.15	590.85		1,300.00
292 Health Savings Accounts	2,133.73	1,803.77	1,687.49	5,624.99
299 All Other Employee Benefits	(906.51)	(766.22)		(1,672.73)
Total Personnel Services – Employee Benefits	\$95,200.70	\$78,350.93	\$42,431.40	\$215,983.03
500 Other Purchased Services				
530 Communications	950.08	803.16		1,753.24
580 Travel	2,065.37	1,745.84		3,811.21
Total Other Purchased Services	\$3,015.45	\$2,549.00		\$5,564.45
600 Supplies				
610 General Supplies	1,999.77	1,680.73		3,680.50
640 Books and Periodicals			1,156.04	1,156.04
Total Supplies	\$1,999.77	\$1,680.73	\$1,156.04	\$4,836.54
800 Other Objects				
810 Dues and Fees	471.45	398.55		870.00
Total Other Objects	\$471.45	\$398.55		\$870.00
Total 2260 Instruction and Curriculum Development Services	\$262,709.03	\$214,873.07	\$125,702.30	\$603,284.40

LEA : 111444602 Mifflin County SD

Printed 12/16/2025 10:35:00 AM

General Fund (10)

2270 Instructional Staff Professional Development Services	<u>Elementary</u>	<u>Secondary</u>	<u>Federal</u>	<u>Total</u>
100 <u>Personnel Services – Salaries</u>				
100 Personnel Services – Salaries	23,264.96	16,670.29	31,232.50	71,167.75
Total Personnel Services – Salaries	\$23,264.96	\$16,670.29	\$31,232.50	\$71,167.75
200 <u>Personnel Services – Employee Benefits</u>				
220 Social Security Contributions	1,749.09	1,246.48	2,385.97	5,381.54
230 PSERS Retirement Contributions	7,886.83	5,651.24	5,293.67	18,831.74
240 Tuition Reimbursement	134,138.39	138,344.16		272,482.55
250 Unemployment Compensation	46.51	33.34	62.41	142.26
260 Workers' Compensation	49.99	35.85	156.28	242.12
Total Personnel Services – Employee Benefits	\$143,870.81	\$145,311.07	\$7,898.33	\$297,080.21
300 <u>Purchased Professional and Technical Services</u>				
329 Professional Educational Services – Other	95,419.00	84,581.00		180,000.00
360 Employee Training and Development Services	39,712.06	30,681.31	26,866.05	97,259.42
Total Purchased Professional and Technical Services	\$135,131.06	\$115,262.31	\$26,866.05	\$277,259.42
500 <u>Other Purchased Services</u>				
580 Travel	7,643.72	9,601.78		17,245.50
Total Other Purchased Services	\$7,643.72	\$9,601.78		\$17,245.50
Total 2270 Instructional Staff Professional Development Services	\$309,910.55	\$286,845.45	\$65,996.88	\$662,752.88

LEA : 111444602 Mifflin County SD

Printed 12/16/2025 10:35:00 AM

General Fund (10)

2280 Nonpublic Support Services	<u>Elementary</u>	<u>Secondary</u>	<u>Federal</u>	<u>Total</u>
300 <u>Purchased Professional and Technical Services</u>				
329 Professional Educational Services – Other			1,665.00	1,665.00
360 Employee Training and Development Services			9,459.53	9,459.53
Total Purchased Professional and Technical Services			\$11,124.53	\$11,124.53
500 <u>Other Purchased Services</u>				
580 Travel			129.00	129.00
Total Other Purchased Services			\$129.00	\$129.00
600 <u>Supplies</u>				
610 General Supplies			16,776.29	16,776.29
Total Supplies			\$16,776.29	\$16,776.29
Total 2280 Nonpublic Support Services			\$28,029.82	\$28,029.82

LEA : 111444602 Mifflin County SD

Printed 12/16/2025 10:35:00 AM

General Fund (10)

2300 Support Services – Administration	Elementary	Secondary	Federal	Total
100 Personnel Services – Salaries				
100 Personnel Services – Salaries	1,085,181.38	874,056.26		2,472,545.91
Total Personnel Services – Salaries	\$1,085,181.38	\$874,056.26		\$2,472,545.91
200 Personnel Services – Employee Benefits				
210 Group Insurance – Contracted Provider	309,725.92	192,576.22		607,065.87
220 Social Security Contributions	81,714.49	66,126.62		186,669.15
230 PSERS Retirement Contributions	366,995.24	292,236.98		806,612.21
250 Unemployment Compensation	2,172.65	1,747.87		4,803.83
260 Workers' Compensation	2,332.96	1,877.09		5,312.46
291 Other Retirement Plans	17,516.15	3,300.00		33,683.51
292 Health Savings Accounts	34,787.30	22,637.70		67,075.01
299 All Other Employee Benefits	(1,838.91)	(903.64)		(2,080.14)
Total Personnel Services – Employee Benefits	\$813,405.80	\$579,598.84		\$1,709,141.90
300 Purchased Professional and Technical Services				
310 Official / Administrative Services				155,899.29
329 Professional Educational Services – Other	22,852.98	3,491.40		27,433.87
330 Other Professional Services				166,709.35
Total Purchased Professional and Technical Services	\$22,852.98	\$3,491.40		\$350,042.51
500 Other Purchased Services				
520 Insurance – General				1,750.00
530 Communications	11,679.65	13,278.98		24,958.63
549 Other Advertising/Public Relations				17,254.55
580 Travel	231.48	227.08		2,128.59
Total Other Purchased Services	\$11,911.13	\$13,506.06		\$46,091.77
600 Supplies				
610 General Supplies	2,461.56	2,999.09		64,881.44
Total Supplies	\$2,461.56	\$2,999.09		\$64,881.44
800 Other Objects				
810 Dues and Fees	4,538.70	3,540.96		38,156.44
820 Claims and Judgments Against the LEA				174,390.77
Total Other Objects	\$4,538.70	\$3,540.96		\$212,547.21
Total 2300 Support Services – Administration	\$1,940,351.55	\$1,477,192.61		\$4,855,250.74

LEA : 111444602 Mifflin County SD

Printed 12/16/2025 10:35:00 AM

General Fund (10)

2310 Board Services

	<u>Elementary</u>	<u>Secondary</u>	<u>Federal</u>	<u>Total</u>
100 <u>Personnel Services – Salaries</u>				
100 Personnel Services – Salaries				4,740.10
Total Personnel Services – Salaries				\$4,740.10
200 <u>Personnel Services – Employee Benefits</u>				
220 Social Security Contributions				358.03
230 PSERS Retirement Contributions				1,606.99
250 Unemployment Compensation				9.61
260 Workers' Compensation				10.17
Total Personnel Services – Employee Benefits				\$1,984.80
300 <u>Purchased Professional and Technical Services</u>				
330 Other Professional Services				39,169.31
Total Purchased Professional and Technical Services				\$39,169.31
500 <u>Other Purchased Services</u>				
520 Insurance – General				1,750.00
549 Other Advertising/Public Relations				17,254.55
580 Travel				103.18
Total Other Purchased Services				\$19,107.73
600 <u>Supplies</u>				
610 General Supplies				563.63
Total Supplies				\$563.63
800 <u>Other Objects</u>				
810 Dues and Fees				22,230.15
820 Claims and Judgments Against the LEA				174,390.77
Total Other Objects				\$196,620.92
Total 2310 Board Services				\$262,186.49

LEA : 111444602 Mifflin County SD

Printed 12/16/2025 10:35:00 AM

General Fund (10)				
2330 Tax Assessment and Collection Services	<u>Elementary</u>	<u>Secondary</u>	<u>Federal</u>	<u>Total</u>
100 <u>Personnel Services – Salaries</u>				
100 Personnel Services – Salaries				71,731.01
Total Personnel Services – Salaries				\$71,731.01
200 <u>Personnel Services – Employee Benefits</u>				
220 Social Security Contributions				5,487.59
260 Workers’ Compensation				154.10
Total Personnel Services – Employee Benefits				\$5,641.69
300 <u>Purchased Professional and Technical Services</u>				
310 Official / Administrative Services				155,899.29
Total Purchased Professional and Technical Services				\$155,899.29
600 <u>Supplies</u>				
610 General Supplies				47,546.10
Total Supplies				\$47,546.10
Total 2330 Tax Assessment and Collection Services				\$280,818.09

LEA : 111444602 Mifflin County SD

Printed 12/16/2025 10:35:00 AM

General Fund (10)				
2350 Legal and Accounting Services	<u>Elementary</u>	<u>Secondary</u>	<u>Federal</u>	<u>Total</u>
300 <u>Purchased Professional and Technical Services</u>				
330 Other Professional Services				127,540.04
Total Purchased Professional and Technical Services				\$127,540.04
Total 2350 Legal and Accounting Services				\$127,540.04

LEA : 111444602 Mifflin County SD

Printed 12/16/2025 10:35:00 AM

General Fund (10)

2360 Office of the Superintendent / Executive Director Services	Elementary	Secondary	Federal	Total
100 <u>Personnel Services – Salaries</u>				
100 Personnel Services – Salaries				436,837.16
Total Personnel Services – Salaries				\$436,837.16
200 <u>Personnel Services – Employee Benefits</u>				
210 Group Insurance – Contracted Provider				104,763.73
220 Social Security Contributions				32,982.42
230 PSERS Retirement Contributions				145,773.00
250 Unemployment Compensation				873.70
260 Workers' Compensation				938.14
291 Other Retirement Plans				12,867.36
292 Health Savings Accounts				9,650.01
299 All Other Employee Benefits				662.41
Total Personnel Services – Employee Benefits				\$308,510.77
300 <u>Purchased Professional and Technical Services</u>				
329 Professional Educational Services – Other				1,089.49
Total Purchased Professional and Technical Services				\$1,089.49
500 <u>Other Purchased Services</u>				
530 Communications	1,731.82	1,442.94		3,174.76
580 Travel				1,566.85
Total Other Purchased Services	\$1,731.82	\$1,442.94		\$4,741.61
600 <u>Supplies</u>				
610 General Supplies				11,311.06
Total Supplies				\$11,311.06
800 <u>Other Objects</u>				
810 Dues and Fees				7,846.63
Total Other Objects				\$7,846.63
Total 2360 Office of the Superintendent / Executive Director Services	\$1,731.82	\$1,442.94		\$770,336.72

LEA : 111444602 Mifflin County SD

Printed 12/16/2025 10:35:00 AM

General Fund (10)

2380 Office of the Principal Services	Elementary	Secondary	Federal	Total
100 <u>Personnel Services – Salaries</u>				
100 Personnel Services – Salaries	1,085,181.38	874,056.26		1,959,237.64
Total Personnel Services – Salaries	\$1,085,181.38	\$874,056.26		\$1,959,237.64
200 <u>Personnel Services – Employee Benefits</u>				
210 Group Insurance – Contracted Provider	309,725.92	192,576.22		502,302.14
220 Social Security Contributions	81,714.49	66,126.62		147,841.11
230 PSERS Retirement Contributions	366,995.24	292,236.98		659,232.22
250 Unemployment Compensation	2,172.65	1,747.87		3,920.52
260 Workers' Compensation	2,332.96	1,877.09		4,210.05
291 Other Retirement Plans	17,516.15	3,300.00		20,816.15
292 Health Savings Accounts	34,787.30	22,637.70		57,425.00
299 All Other Employee Benefits	(1,838.91)	(903.64)		(2,742.55)
Total Personnel Services Employee Benefits	\$813,405.80	\$579,598.84		\$1,393,004.64
300 <u>Purchased Professional and Technical Services</u>				
329 Professional Educational Services – Other	22,852.98	3,491.40		26,344.38
Total Purchased Professional and Technical Services	\$22,852.98	\$3,491.40		\$26,344.38
500 <u>Other Purchased Services</u>				
530 Communications	9,947.83	11,836.04		21,783.87
580 Travel	231.48	227.08		458.56
Total Other Purchased Services	\$10,179.31	\$12,063.12		\$22,242.43
600 <u>Supplies</u>				
610 General Supplies	2,461.56	2,999.09		5,460.65
Total Supplies	\$2,461.56	\$2,999.09		\$5,460.65
800 <u>Other Objects</u>				
810 Dues and Fees	4,538.70	3,540.96		8,079.66
Total Other Objects	\$4,538.70	\$3,540.96		\$8,079.66
Total 2380 Office of the Principal Services	\$1,938,619.73	\$1,475,749.67		\$3,414,369.40

LEA : 111444602 Mifflin County SD

Printed 12/16/2025 10:35:00 AM

General Fund (10)

2400 Support Services – Pupil Health	<u>Elementary</u>	<u>Secondary</u>	<u>Federal</u>	<u>Total</u>
100 <u>Personnel Services – Salaries</u>				
100 Personnel Services – Salaries				514,186.73
Total Personnel Services – Salaries				\$514,186.73
200 <u>Personnel Services – Employee Benefits</u>				
210 Group Insurance – Contracted Provider			9,092.66	240,237.71
220 Social Security Contributions				38,378.64
230 PSERS Retirement Contributions				172,883.93
250 Unemployment Compensation				1,028.27
260 Workers' Compensation				1,104.13
292 Health Savings Accounts				21,000.00
Total Personnel Services – Employee Benefits			\$9,092.66	\$474,632.68
300 <u>Purchased Professional and Technical Services</u>				
329 Professional Educational Services – Other				18,995.80
330 Other Professional Services				25,827.83
390 Other Purchased Professional and Technical Services				660.00
Total Purchased Professional and Technical Services				\$45,483.63
500 <u>Other Purchased Services</u>				
580 Travel				854.86
Total Other Purchased Services				\$854.86
600 <u>Supplies</u>				
610 General Supplies				6,694.38
Total Supplies				\$6,694.38
800 <u>Other Objects</u>				
810 Dues and Fees				650.00
Total Other Objects				\$650.00
Total 2400 Support Services – Pupil Health			\$9,092.66	\$1,042,502.28

LEA : 111444602 Mifflin County SD

Printed 12/16/2025 10:35:00 AM

General Fund (10)

2420 Medical Services

	<u>Elementary</u>	<u>Secondary</u>	<u>Federal</u>	<u>Total</u>
100 <u>Personnel Services – Salaries</u>				
100 Personnel Services – Salaries				514,186.73
Total Personnel Services – Salaries				\$514,186.73
200 <u>Personnel Services – Employee Benefits</u>				
210 Group Insurance – Contracted Provider			9,092.66	240,237.71
220 Social Security Contributions				38,378.64
230 PSERS Retirement Contributions				172,883.93
250 Unemployment Compensation				1,028.27
260 Workers' Compensation				1,104.13
292 Health Savings Accounts				21,000.00
Total Personnel Services – Employee Benefits			\$9,092.66	\$474,632.68
300 <u>Purchased Professional and Technical Services</u>				
329 Professional Educational Services – Other				18,995.80
330 Other Professional Services				25,827.83
390 Other Purchased Professional and Technical Services				660.00
Total Purchased Professional and Technical Services				\$45,483.63
500 <u>Other Purchased Services</u>				
580 Travel				854.86
Total Other Purchased Services				\$854.86
600 <u>Supplies</u>				
610 General Supplies				6,694.38
Total Supplies				\$6,694.38
800 <u>Other Objects</u>				
810 Dues and Fees				650.00
Total Other Objects				\$650.00
Total 2420 Medical Services			\$9,092.66	\$1,042,502.28

LEA : 111444602 Mifflin County SD

Printed 12/16/2025 10:35:00 AM

General Fund (10)				
2500 Support Services – Business	Elementary	Secondary	Federal	Total
100 <u>Personnel Services – Salaries</u>				
100 Personnel Services – Salaries				543,824.58
Total Personnel Services – Salaries				\$543,824.58
200 <u>Personnel Services – Employee Benefits</u>				
210 Group Insurance – Contracted Provider				143,130.55
220 Social Security Contributions				41,039.24
230 PSERS Retirement Contributions				184,356.52
250 Unemployment Compensation				1,087.67
260 Workers' Compensation				1,167.65
292 Health Savings Accounts				15,573.54
299 All Other Employee Benefits				(779.41)
Total Personnel Services – Employee Benefits				\$385,575.76
300 <u>Purchased Professional and Technical Services</u>				
310 Official / Administrative Services				85,062.25
340 Technical Services				11,202.95
Total Purchased Professional and Technical Services				\$96,265.20
500 <u>Other Purchased Services</u>				
530 Communications				15,986.54
580 Travel				502.93
Total Other Purchased Services				\$16,489.47
600 <u>Supplies</u>				
610 General Supplies				24,481.30
650 Supplies & Fees – Technology Related				22,705.04
Total Supplies				\$47,186.34
800 <u>Other Objects</u>				
810 Dues and Fees				7,376.44
Total Other Objects				\$7,376.44
Total 2500 Support Services – Business				\$1,096,717.79

LEA : 111444602 Mifflin County SD

Printed 12/16/2025 10:35:00 AM

General Fund (10)				
2510 Fiscal Services				
	<u>Elementary</u>	<u>Secondary</u>	<u>Federal</u>	<u>Total</u>
100 <u>Personnel Services – Salaries</u>				
100 Personnel Services – Salaries				543,824.58
Total Personnel Services – Salaries				\$543,824.58
200 <u>Personnel Services – Employee Benefits</u>				
210 Group Insurance – Contracted Provider				143,130.55
220 Social Security Contributions				41,039.24
230 PSERS Retirement Contributions				184,356.52
250 Unemployment Compensation				1,087.67
260 Workers' Compensation				1,167.65
292 Health Savings Accounts				15,573.54
299 All Other Employee Benefits				(779.41)
Total Personnel Services – Employee Benefits				\$385,575.76
300 <u>Purchased Professional and Technical Services</u>				
310 Official / Administrative Services				85,062.25
340 Technical Services				11,202.95
Total Purchased Professional and Technical Services				\$96,265.20
500 <u>Other Purchased Services</u>				
530 Communications				15,986.54
580 Travel				502.93
Total Other Purchased Services				\$16,489.47
600 <u>Supplies</u>				
610 General Supplies				24,481.30
650 Supplies & Fees – Technology Related				22,705.04
Total Supplies				\$47,186.34
800 <u>Other Objects</u>				
810 Dues and Fees				7,376.44
Total Other Objects				\$7,376.44
Total 2510 Fiscal Services				\$1,096,717.79

LEA : 111444602 Mifflin County SD

Printed 12/16/2025 10:35:00 AM

General Fund (10)				
2511 Supervision of Fiscal Services - Head of Component	<u>Elementary</u>	<u>Secondary</u>	<u>Federal</u>	<u>Total</u>
100 <u>Personnel Services – Salaries</u>				
100 Personnel Services – Salaries				164,107.19
Total Personnel Services – Salaries				\$164,107.19
200 <u>Personnel Services – Employee Benefits</u>				
210 Group Insurance – Contracted Provider				58,866.71
220 Social Security Contributions				12,426.76
230 PSERS Retirement Contributions				55,632.47
250 Unemployment Compensation				328.17
260 Workers' Compensation				352.33
292 Health Savings Accounts				5,712.51
Total Personnel Services – Employee Benefits				\$133,318.95
500 <u>Other Purchased Services</u>				
580 Travel				97.84
Total Other Purchased Services				\$97.84
600 <u>Supplies</u>				
650 Supplies & Fees – Technology Related				22,705.04
Total Supplies				\$22,705.04
800 <u>Other Objects</u>				
810 Dues and Fees				1,047.78
Total Other Objects				\$1,047.78
Total 2511 Supervision of Fiscal Services - Head of Component				\$321,276.80

LEA : 111444602 Mifflin County SD

Printed 12/16/2025 10:35:00 AM

General Fund (10)

2514 Payroll Services

Elementary Secondary Federal Total

100 <u>Personnel Services – Salaries</u>				
100 Personnel Services – Salaries				112,916.00
Total Personnel Services – Salaries				\$112,916.00
200 <u>Personnel Services – Employee Benefits</u>				
210 Group Insurance – Contracted Provider				30,417.53
220 Social Security Contributions				8,376.82
230 PSERS Retirement Contributions				38,278.45
250 Unemployment Compensation				225.93
260 Workers' Compensation				242.45
292 Health Savings Accounts				2,249.99
299 All Other Employee Benefits				993.15
Total Personnel Services – Employee Benefits				\$80,784.32
500 <u>Other Purchased Services</u>				
580 Travel				28.00
Total Other Purchased Services				\$28.00
Total 2514 Payroll Services				\$193,728.32

LEA : 111444602 Mifflin County SD

Printed 12/16/2025 10:35:00 AM

General Fund (10)

2515 Financial Accounting Services	<u>Elementary</u>	<u>Secondary</u>	<u>Federal</u>	<u>Total</u>
100 <u>Personnel Services – Salaries</u>				
100 Personnel Services – Salaries				118,811.30
Total Personnel Services – Salaries				\$118,811.30
200 <u>Personnel Services – Employee Benefits</u>				
210 Group Insurance – Contracted Provider				28,361.31
220 Social Security Contributions				8,995.04
230 PSERS Retirement Contributions				40,277.05
250 Unemployment Compensation				237.62
260 Workers' Compensation				255.16
292 Health Savings Accounts				3,586.04
299 All Other Employee Benefits				(483.65)
Total Personnel Services – Employee Benefits				\$81,228.57
300 <u>Purchased Professional and Technical Services</u>				
310 Official / Administrative Services				84,837.25
340 Technical Services				11,202.95
Total Purchased Professional and Technical Services				\$96,040.20
500 <u>Other Purchased Services</u>				
530 Communications				15,362.36
580 Travel				258.82
Total Other Purchased Services				\$15,621.18
600 <u>Supplies</u>				
610 General Supplies				23,959.57
Total Supplies				\$23,959.57
800 <u>Other Objects</u>				
810 Dues and Fees				400.88
Total Other Objects				\$400.88
Total 2515 Financial Accounting Services				\$336,061.70

LEA : 111444602 Mifflin County SD

Printed 12/16/2025 10:35:00 AM

General Fund (10)				
2519 Other Fiscal Services	<u>Elementary</u>	<u>Secondary</u>	<u>Federal</u>	<u>Total</u>
100 <u>Personnel Services – Salaries</u>				
100 Personnel Services – Salaries				147,990.09
Total Personnel Services – Salaries				\$147,990.09
200 <u>Personnel Services – Employee Benefits</u>				
210 Group Insurance – Contracted Provider				25,485.00
220 Social Security Contributions				11,240.62
230 PSERS Retirement Contributions				50,168.55
250 Unemployment Compensation				295.95
260 Workers' Compensation				317.71
292 Health Savings Accounts				4,025.00
299 All Other Employee Benefits				(1,288.91)
Total Personnel Services – Employee Benefits				\$90,243.92
300 <u>Purchased Professional and Technical Services</u>				
310 Official / Administrative Services				225.00
Total Purchased Professional and Technical Services				\$225.00
500 <u>Other Purchased Services</u>				
530 Communications				624.18
580 Travel				118.27
Total Other Purchased Services				\$742.45
600 <u>Supplies</u>				
610 General Supplies				521.73
Total Supplies				\$521.73
800 <u>Other Objects</u>				
810 Dues and Fees				5,927.78
Total Other Objects				\$5,927.78
Total 2519 Other Fiscal Services				\$245,650.97

LEA : 111444602 Mifflin County SD

Printed 12/16/2025 10:35:00 AM

General Fund (10)

2600 Operation and Maintenance of Plant Services	Elementary	Secondary	Federal	Total
100 <u>Personnel Services – Salaries</u>				
100 Personnel Services – Salaries			2,220.48	2,437,636.32
Total Personnel Services – Salaries			\$2,220.48	\$2,437,636.32
200 <u>Personnel Services – Employee Benefits</u>				
210 Group Insurance – Contracted Provider			17,690.49	941,220.96
220 Social Security Contributions			169.86	183,515.22
230 PSERS Retirement Contributions			752.74	822,744.90
250 Unemployment Compensation			4.44	4,875.14
260 Workers' Compensation			11.10	5,241.96
292 Health Savings Accounts				89,244.26
299 All Other Employee Benefits				(3,148.55)
Total Personnel Services – Employee Benefits			\$18,628.63	\$2,043,693.89
300 <u>Purchased Professional and Technical Services</u>				
330 Other Professional Services				38,447.86
350 Security / Safety Services				171,708.03
Total Purchased Professional and Technical Services				\$210,155.89
400 <u>Purchased Property Services</u>				
410 Cleaning Services				46,531.18
420 Utility Services				103,119.02
430 Repairs and Maintenance Services				925,717.94
440 Rentals				5,584.86
450 Construction Services				85,189.79
Total Purchased Property Services				\$1,166,142.79
500 <u>Other Purchased Services</u>				
523 General Property and Liability Insurance				293,490.57
529 Other Insurance				63,857.99
530 Communications				6,395.72
580 Travel				560.28
Total Other Purchased Services				\$364,304.56
600 <u>Supplies</u>				
610 General Supplies	153,644.53	173,914.41		327,558.94
620 Energy				671,955.91
650 Supplies & Fees – Technology Related				5,810.00
	\$153,644.53	\$173,914.41		\$1,005,324.85
700 <u>Property</u>				
752 Capital Equipment – Original and Additional				113,956.67
762 Capitalized Equipment - Replacement				277,268.09
Total Property				\$391,224.76
800 <u>Other Objects</u>				
810 Dues and Fees				177.77
Total Other Objects				\$177.77
Total 2600 Operation and Maintenance of Plant Services	\$153,644.53	\$173,914.41	\$20,849.11	\$7,618,660.83

LEA : 111444602 Mifflin County SD

Printed 12/16/2025 10:35:00 AM

General Fund (10)

2610 Supervision of Operation and Maintenance of Plant Services	<u>Elementary</u>	<u>Secondary</u>	<u>Federal</u>	<u>Total</u>
100 <u>Personnel Services – Salaries</u>				
100 Personnel Services – Salaries				203,279.43
Total Personnel Services – Salaries				\$203,279.43
200 <u>Personnel Services – Employee Benefits</u>				
210 Group Insurance – Contracted Provider			4,819.11	69,628.01
220 Social Security Contributions				15,408.41
230 PSERS Retirement Contributions				68,911.81
250 Unemployment Compensation				406.39
260 Workers' Compensation				436.50
292 Health Savings Accounts				6,275.01
299 All Other Employee Benefits				495.38
Total Personnel Services – Employee Benefits			\$4,819.11	\$161,561.51
500 <u>Other Purchased Services</u>				
580 Travel				560.28
Total Other Purchased Services				\$560.28
Total 2610 Supervision of Operation and Maintenance of Plant Services			\$4,819.11	\$365,401.22

LEA : 111444602 Mifflin County SD

Printed 12/16/2025 10:35:00 AM

General Fund (10)

2611 Supervision of Operation and Maintenance of Plant Services – Head of Component	<u>Elementary</u>	<u>Secondary</u>	<u>Federal</u>	<u>Total</u>
100 <u>Personnel Services – Salaries</u>				
100 Personnel Services – Salaries				203,279.43
Total Personnel Services – Salaries				\$203,279.43
200 <u>Personnel Services – Employee Benefits</u>				
210 Group Insurance – Contracted Provider			4,819.11	69,628.01
220 Social Security Contributions				15,408.41
230 PSERS Retirement Contributions				68,911.81
250 Unemployment Compensation				406.39
260 Workers' Compensation				436.50
292 Health Savings Accounts				6,275.01
299 All Other Employee Benefits				495.38
Total Personnel Services – Employee Benefits			\$4,819.11	\$161,561.51
500 <u>Other Purchased Services</u>				
580 Travel				560.28
Total Other Purchased Services				\$560.28
Total 2611 Supervision of Operation and Maintenance of Plant Services – Head of Component			\$4,819.11	\$365,401.22

LEA : 111444602 Mifflin County SD

Printed 12/16/2025 10:35:00 AM

General Fund (10)

2620 Operation of Buildings Services	Elementary	Secondary	Federal	Total
100 <u>Personnel Services – Salaries</u>				
100 Personnel Services – Salaries			2,220.48	2,213,143.37
Total Personnel Services – Salaries			\$2,220.48	\$2,213,143.37
200 <u>Personnel Services – Employee Benefits</u>				
210 Group Insurance – Contracted Provider			12,871.38	871,592.95
220 Social Security Contributions			169.86	166,506.77
230 PSERS Retirement Contributions			752.74	747,656.79
250 Unemployment Compensation			4.44	4,426.14
260 Workers' Compensation			11.10	4,759.39
292 Health Savings Accounts				82,969.25
299 All Other Employee Benefits				(3,643.93)
Total Personnel Services – Employee Benefits			\$13,809.52	\$1,874,267.36
300 <u>Purchased Professional and Technical Services</u>				
330 Other Professional Services				38,447.86
Total Purchased Professional and Technical Services				\$38,447.86
400 <u>Purchased Property Services</u>				
410 Cleaning Services				46,531.18
420 Utility Services				103,119.02
430 Repairs and Maintenance Services				925,717.94
440 Rentals				5,584.86
450 Construction Services				85,189.79
Total Purchased Property Services				\$1,166,142.79
500 <u>Other Purchased Services</u>				
523 General Property and Liability Insurance				293,490.57
529 Other Insurance				63,857.99
530 Communications				6,395.72
Total Other Purchased Services				\$363,744.28
600 <u>Supplies</u>				
610 General Supplies	147,122.80	112,025.61		259,148.41
620 Energy				671,955.91
Total Supplies	\$147,122.80	\$112,025.61		\$931,104.32
700 <u>Property</u>				
752 Capital Equipment – Original and Additional				113,956.67
762 Capitalized Equipment - Replacement				277,268.09
Total Property				\$391,224.76
800 <u>Other Objects</u>				
810 Dues and Fees				177.77
Total Other Objects				\$177.77
Total 2620 Operation of Buildings Services	\$147,122.80	\$112,025.61	\$16,030.00	\$6,978,252.51

LEA : 111444602 Mifflin County SD

Printed 12/16/2025 10:35:00 AM

General Fund (10)

2660 Safety and Security Services	<u>Elementary</u>	<u>Secondary</u>	<u>Federal</u>	<u>Total</u>
100 <u>Personnel Services – Salaries</u>				
100 Personnel Services – Salaries				21,213.52
Total Personnel Services – Salaries				\$21,213.52
200 <u>Personnel Services – Employee Benefits</u>				
220 Social Security Contributions				1,600.04
230 PSERS Retirement Contributions				6,176.30
250 Unemployment Compensation				42.61
260 Workers' Compensation				46.07
Total Personnel Services – Employee Benefits				\$7,865.02
300 <u>Purchased Professional and Technical Services</u>				
350 Security / Safety Services				171,708.03
Total Purchased Professional and Technical Services				\$171,708.03
600 <u>Supplies</u>				
610 General Supplies	6,521.73	61,888.80		68,410.53
650 Supplies & Fees – Technology Related				5,810.00
Total Supplies	\$6,521.73	\$61,888.80		\$74,220.53
Total 2660 Safety and Security Services	\$6,521.73	\$61,888.80		\$275,007.10

LEA : 111444602 Mifflin County SD

Printed 12/16/2025 10:35:00 AM

General Fund (10)

2700 Student Transportation Services	<u>Elementary</u>	<u>Secondary</u>	<u>Federal</u>	<u>Total</u>
100 <u>Personnel Services – Salaries</u>				
100 Personnel Services – Salaries				76,272.57
Total Personnel Services – Salaries				\$76,272.57
200 <u>Personnel Services – Employee Benefits</u>				
210 Group Insurance – Contracted Provider				12,463.42
220 Social Security Contributions				5,776.80
230 PSERS Retirement Contributions				25,856.51
250 Unemployment Compensation				152.47
260 Workers' Compensation				163.84
292 Health Savings Accounts				1,125.01
299 All Other Employee Benefits				1,517.40
Total Personnel Services – Employee Benefits				\$47,055.45
300 <u>Purchased Professional and Technical Services</u>				
390 Other Purchased Professional and Technical Services				988.81
Total Purchased Professional and Technical Services				\$988.81
500 <u>Other Purchased Services</u>				
513 Contracted Carriers				5,523,624.79
516 Student Transportation Services From the IU				87,789.22
530 Communications				1,327.40
580 Travel				275.11
Total Other Purchased Services				\$5,613,016.52
600 <u>Supplies</u>				
610 General Supplies				1,516.25
650 Supplies & Fees – Technology Related				11,504.60
Total Supplies				\$13,020.85
800 <u>Other Objects</u>				
810 Dues and Fees				177.77
Total Other Objects				\$177.77
Total 2700 Student Transportation Services				\$5,750,531.97

LEA : 111444602 Mifflin County SD

Printed 12/16/2025 10:35:00 AM

General Fund (10)

2720 Vehicle Operation Services	<u>Elementary</u>	<u>Secondary</u>	<u>Federal</u>	<u>Total</u>
100 <u>Personnel Services – Salaries</u>				
100 Personnel Services – Salaries				76,272.57
Total Personnel Services – Salaries				\$76,272.57
200 <u>Personnel Services – Employee Benefits</u>				
210 Group Insurance – Contracted Provider				12,463.42
220 Social Security Contributions				5,776.80
230 PSERS Retirement Contributions				25,856.51
250 Unemployment Compensation				152.47
260 Workers' Compensation				163.84
292 Health Savings Accounts				1,125.01
299 All Other Employee Benefits				1,517.40
Total Personnel Services – Employee Benefits				\$47,055.45
300 <u>Purchased Professional and Technical Services</u>				
390 Other Purchased Professional and Technical Services				988.81
Total Purchased Professional and Technical Services				\$988.81
500 <u>Other Purchased Services</u>				
513 Contracted Carriers				4,639,321.29
516 Student Transportation Services From the IU				87,789.22
530 Communications				1,327.40
580 Travel				275.11
Total Other Purchased Services				\$4,728,713.02
600 <u>Supplies</u>				
610 General Supplies				1,516.25
650 Supplies & Fees – Technology Related				11,504.60
Total Supplies				\$13,020.85
800 <u>Other Objects</u>				
810 Dues and Fees				177.77
Total Other Objects				\$177.77
Total 2720 Vehicle Operation Services				\$4,866,228.47

LEA : 111444602 Mifflin County SD

Printed 12/16/2025 10:35:00 AM

General Fund (10)				
2750 Nonpublic Transportation	<u>Elementary</u>	<u>Secondary</u>	<u>Federal</u>	<u>Total</u>
500 <u>Other Purchased Services</u>				
513 Contracted Carriers				884,303.50
Total Other Purchased Services				\$884,303.50
Total 2750 Nonpublic Transportation				\$884,303.50

LEA : 111444602 Mifflin County SD

Printed 12/16/2025 10:35:00 AM

General Fund (10)

2800 Support Services – Central

	<u>Elementary</u>	<u>Secondary</u>	<u>Federal</u>	<u>Total</u>
100 <u>Personnel Services – Salaries</u>				
100 Personnel Services – Salaries			89,014.63	735,692.13
Total Personnel Services – Salaries			\$89,014.63	\$735,692.13
200 <u>Personnel Services – Employee Benefits</u>				
210 Group Insurance – Contracted Provider			29,335.46	209,504.16
220 Social Security Contributions			6,595.56	55,380.50
230 PSERS Retirement Contributions			15,004.05	235,530.14
240 Tuition Reimbursement				28,389.50
250 Unemployment Compensation			176.99	1,470.51
260 Workers' Compensation			442.85	1,831.54
292 Health Savings Accounts			2,249.99	21,724.98
299 All Other Employee Benefits				(2,258.19)
			\$53,804.90	\$551,573.14
300 <u>Purchased Professional and Technical Services</u>				
340 Technical Services				115,410.05
360 Employee Training and Development Services				219.78
Total Purchased Professional and Technical Services				\$115,629.83
400 <u>Purchased Property Services</u>				
430 Repairs and Maintenance Services				9,081.79
Total Purchased Property Services				\$9,081.79
500 <u>Other Purchased Services</u>				
520 Insurance – General				1,387.49
530 Communications			17.35	8,938.11
580 Travel			1,258.87	9,599.44
591 Services Purchased Locally			525.01	525.01
Total Other Purchased Services			\$1,801.23	\$20,450.05
600 <u>Supplies</u>				
610 General Supplies			397.22	11,885.05
650 Supplies & Fees – Technology Related			250,313.29	574,743.61
Total Supplies			\$250,710.51	\$586,628.66
700 <u>Property</u>				
766 Capitalized Technology Equipment – Replacement				120,749.29
Total Property				\$120,749.29
800 <u>Other Objects</u>				
810 Dues and Fees			99.21	1,475.57
Total Other Objects			\$99.21	\$1,475.57
Total 2800 Support Services – Central			\$395,430.48	\$2,141,280.46

LEA : 111444602 Mifflin County SD

Printed 12/16/2025 10:35:00 AM

General Fund (10)

2810 Planning, Research, Development and Evaluation Services	<u>Elementary</u>	<u>Secondary</u>	<u>Federal</u>	<u>Total</u>
100 <u>Personnel Services – Salaries</u>				
100 Personnel Services – Salaries			495.66	647,173.16
Total Personnel Services – Salaries			\$495.66	\$647,173.16
200 <u>Personnel Services – Employee Benefits</u>				
210 Group Insurance – Contracted Provider			4,321.38	184,490.08
220 Social Security Contributions				48,784.94
230 PSERS Retirement Contributions				220,526.09
250 Unemployment Compensation				1,293.52
260 Workers' Compensation				1,388.69
292 Health Savings Accounts				19,474.99
299 All Other Employee Benefits				(2,258.19)
Total Personnel Services – Employee Benefits			\$4,321.38	\$473,700.12
300 <u>Purchased Professional and Technical Services</u>				
340 Technical Services				115,410.05
Total Purchased Professional and Technical Services				\$115,410.05
400 <u>Purchased Property Services</u>				
430 Repairs and Maintenance Services				9,081.79
Total Purchased Property Services				\$9,081.79
500 <u>Other Purchased Services</u>				
530 Communications				8,920.76
580 Travel				8,340.57
Total Other Purchased Services				\$17,261.33
600 <u>Supplies</u>				
610 General Supplies				11,487.83
650 Supplies & Fees – Technology Related			250,313.29	574,743.61
Total Supplies			\$250,313.29	\$586,231.44
700 <u>Property</u>				
766 Capitalized Technology Equipment – Replacement				120,749.29
Total Property				\$120,749.29
800 <u>Other Objects</u>				
810 Dues and Fees				1,375.56
Total Other Objects				\$1,375.56
Total 2810 Planning, Research, Development and Evaluation Services			\$255,130.33	\$1,970,982.74

LEA : 111444602 Mifflin County SD

Printed 12/16/2025 10:35:00 AM

General Fund (10)

2830 Staff Services	<u>Elementary</u>	<u>Secondary</u>	<u>Federal</u>	<u>Total</u>
200 <u>Personnel Services – Employee Benefits</u>				
240 Tuition Reimbursement				28,389.50
Total Personnel Services – Employee Benefits				\$28,389.50
300 <u>Purchased Professional and Technical Services</u>				
360 Employee Training and Development Services				219.78
Total Purchased Professional and Technical Services				\$219.78
500 <u>Other Purchased Services</u>				
520 Insurance – General				1,387.49
Total Other Purchased Services				\$1,387.49
Total 2830 Staff Services				\$29,996.77

LEA : 111444602 Mifflin County SD

Printed 12/16/2025 10:35:00 AM

General Fund (10)

2834 Staff Development Services – Non-Instructional, Certified Staff Only	<u>Elementary</u>	<u>Secondary</u>	<u>Federal</u>	<u>Total</u>
200 <u>Personnel Services – Employee Benefits</u>				
240 Tuition Reimbursement				28,389.50
Total Personnel Services – Employee Benefits				\$28,389.50
300 <u>Purchased Professional and Technical Services</u>				
360 Employee Training and Development Services				219.78
Total Purchased Professional and Technical Services				\$219.78
500 <u>Other Purchased Services</u>				
520 Insurance – General				1,387.49
Total Other Purchased Services				\$1,387.49
Total 2834 Staff Development Services – Non-Instructional, Certified Staff Only				\$29,996.77

LEA : 111444602 Mifflin County SD

Printed 12/16/2025 10:35:00 AM

General Fund (10)

2850 State and Federal Agency Liaison Services	<u>Elementary</u>	<u>Secondary</u>	<u>Federal</u>	<u>Total</u>
100 <u>Personnel Services – Salaries</u>				
100 Personnel Services – Salaries			88,518.97	88,518.97
Total Personnel Services – Salaries			\$88,518.97	\$88,518.97
200 <u>Personnel Services – Employee Benefits</u>				
210 Group Insurance – Contracted Provider			25,014.08	25,014.08
220 Social Security Contributions			6,595.56	6,595.56
230 PSERS Retirement Contributions			15,004.05	15,004.05
250 Unemployment Compensation			176.99	176.99
260 Workers' Compensation			442.85	442.85
292 Health Savings Accounts			2,249.99	2,249.99
Total Personnel Services – Employee Benefits			\$49,483.52	\$49,483.52
500 <u>Other Purchased Services</u>				
530 Communications			17.35	17.35
580 Travel			1,258.87	1,258.87
591 Services Purchased Locally			525.01	525.01
Total Other Purchased Services			\$1,801.23	\$1,801.23
600 <u>Supplies</u>				
610 General Supplies			397.22	397.22
Total Supplies			\$397.22	\$397.22
800 <u>Other Objects</u>				
810 Dues and Fees			99.21	100.01
Total Other Objects			\$99.21	\$100.01
Total 2850 State and Federal Agency Liaison Services			\$140,300.15	\$140,300.95

LEA : 111444602 Mifflin County SD

Printed 12/16/2025 10:35:18 AM

General Fund (10)

3000 Operation of Non-Instructional Services		<u>Total</u>
100 <u>Personnel Services – Salaries</u>		
100 Personnel Services – Salaries		8,219.00
120 Professional – Educational		98,424.00
130 Professional – Other		397,312.60
150 Office / Clerical		60,143.05
180 Service Work		17,223.98
Total Personnel Services – Salaries		\$581,322.63
200 <u>Personnel Services – Employee Benefits</u>		
210 Group Insurance – Contracted Provider		23,135.37
220 Social Security Contributions		43,666.05
230 PSERS Retirement Contributions		190,877.63
250 Unemployment Compensation		1,162.63
260 Workers’ Compensation		2,514.24
292 Health Savings Accounts		2,899.99
299 All Other Employee Benefits		39.14
Total Personnel Services – Employee Benefits		\$264,295.05
300 <u>Purchased Professional and Technical Services</u>		
390 Other Purchased Professional and Technical Services		151,703.77
Total Purchased Professional and Technical Services		\$151,703.77
500 <u>Other Purchased Services</u>		
510 Student Transportation Services		280,561.35
530 Communications		4,611.35
580 Travel		16,520.68
591 Services Purchased Locally		59,150.57
Total Other Purchased Services		\$360,843.95
600 <u>Supplies</u>		
610 General Supplies		154,722.48
650 Supplies & Fees – Technology Related		1,126.54
Total Supplies		\$155,849.02
800 <u>Other Objects</u>		
810 Dues and Fees		23,959.71
860 Grants To Municipal and Community Service Organizations		1,707.39
Total Other Objects		\$25,667.10
Total 3000 Operation of Non-Instructional Services		\$1,539,681.52

LEA : 111444602 Mifflin County SD

Printed 12/16/2025 10:35:18 AM

General Fund (10)

3200 Student Activities

	<u>Elementary</u>	<u>Secondary</u>	<u>Federal</u>	<u>Total</u>
100 <u>Personnel Services – Salaries</u>				
120 Professional – Educational				98,424.00
130 Professional – Other				397,312.60
150 Office / Clerical				60,143.05
180 Service Work				17,223.98
Total Personnel Services – Salaries				\$573,103.63
200 <u>Personnel Services – Employee Benefits</u>				
210 Group Insurance – Contracted Provider				23,135.37
220 Social Security Contributions				43,047.65
230 PSERS Retirement Contributions				189,484.52
250 Unemployment Compensation				1,146.17
260 Workers’ Compensation				2,473.15
292 Health Savings Accounts				2,899.99
299 All Other Employee Benefits				39.14
Total Personnel Services – Employee Benefits				\$262,225.99
300 <u>Purchased Professional and Technical Services</u>				
390 Other Purchased Professional and Technical Services				151,703.77
Total Purchased Professional and Technical Services				\$151,703.77
500 <u>Other Purchased Services</u>				
510 Student Transportation Services				280,561.35
530 Communications				4,611.35
580 Travel				16,520.68
591 Services Purchased Locally				59,150.57
Total Other Purchased Services				\$360,843.95
600 <u>Supplies</u>				
610 General Supplies				137,557.05
650 Supplies & Fees – Technology Related				1,126.54
Total Supplies				\$138,683.59
800 <u>Other Objects</u>				
810 Dues and Fees				23,959.71
Total Other Objects				\$23,959.71
Total 3200 Student Activities				\$1,510,520.64

LEA : 111444602 Mifflin County SD

Printed 12/16/2025 10:35:18 AM

General Fund (10)				
3300 Community Services	<u>Elementary</u>	<u>Secondary</u>	<u>Federal</u>	<u>Total</u>
100 <u>Personnel Services – Salaries</u>				
100 Personnel Services – Salaries			8,219.00	8,219.00
Total Personnel Services – Salaries			\$8,219.00	\$8,219.00
200 <u>Personnel Services – Employee Benefits</u>				
220 Social Security Contributions			618.40	618.40
230 PSERS Retirement Contributions			1,393.11	1,393.11
250 Unemployment Compensation			16.46	16.46
260 Workers' Compensation			41.09	41.09
Total Personnel Services – Employee Benefits			\$2,069.06	\$2,069.06
600 <u>Supplies</u>				
610 General Supplies			16,755.24	17,165.43
Total Supplies			\$16,755.24	\$17,165.43
800 <u>Other Objects</u>				
860 Grants To Municipal and Community Service Organizations				1,707.39
Total Other Objects				\$1,707.39
Total 3300 Community Services			\$27,043.30	\$29,160.88

LEA : 111444602 Mifflin County SD

Printed 12/16/2025 10:35:27 AM

General Fund (10)

4000 Facilities Acquisition, Construction and Improvement Services		<u>Total</u>
400 <u>Purchased Property Services</u>		
450 Construction Services		148,442.10
Total Purchased Property Services		\$148,442.10
Total 4000 Facilities Acquisition, Construction and Improvement Services		\$148,442.10

LEA : 111444602 Mifflin County SD

Printed 12/16/2025 10:35:27 AM

General Fund (10)

4500 Building Acquisition and Construction Services – Original and Additional	<u>Elementary</u>	<u>Secondary</u>	<u>Federal</u>	<u>Total</u>
400 <u>Purchased Property Services</u>				
450 Construction Services			148,442.10	148,442.10
Total Purchased Property Services			\$148,442.10	\$148,442.10
Total 4500 Building Acquisition and Construction Services – Original and Additional			\$148,442.10	\$148,442.10

LEA : 111444602 Mifflin County SD

Printed 12/16/2025 10:35:36 AM

General Fund (10)	
5000 Other Expenditures and Financing Uses	<u>Total</u>
800 <u>Other Objects</u>	
830 Interest	2,101,040.47
Total Other Objects	\$2,101,040.47
900 <u>Other Uses of Funds</u>	
910 Redemption of Principal	5,879,332.62
939 Other Fund Transfers	10,669,238.15
Total Other Uses of Funds	\$16,548,570.77
Total 5000 Other Expenditures and Financing Uses	\$18,649,611.24

LEA : 111444602 Mifflin County SD

Printed 12/16/2025 10:35:36 AM

General Fund (10)

5100 Debt Service / Other Expenditures and Financing Uses	<u>Elementary</u>	<u>Secondary</u>	<u>Federal</u>	<u>Total</u>
800 <u>Other Objects</u>				
830 Interest				2,101,040.47
Total Other Objects				\$2,101,040.47
900 <u>Other Uses of Funds</u>				
910 Redemption of Principal				5,879,332.62
Total Other Uses of Funds				\$5,879,332.62
Total 5100 Debt Service / Other Expenditures and Financing Uses				\$7,980,373.09

LEA : 111444602 Mifflin County SD

Printed 12/16/2025 10:35:36 AM

General Fund (10)				
5110 Debt Service	<u>Elementary</u>	<u>Secondary</u>	<u>Federal</u>	<u>Total</u>
800 <u>Other Objects</u>				
830 Interest				2,073,698.38
Total Other Objects				\$2,073,698.38
900 <u>Other Uses of Funds</u>				
910 Redemption of Principal				5,496,000.00
Total Other Uses of Funds				\$5,496,000.00
Total 5110 Debt Service				\$7,569,698.38

LEA : 111444602 Mifflin County SD

Printed 12/16/2025 10:35:36 AM

General Fund (10)

5140 Leases and Other Right-to-Use Arrangements	<u>Elementary</u>	<u>Secondary</u>	<u>Federal</u>	<u>Total</u>
800 <u>Other Objects</u>				
830 Interest				27,342.09
Total Other Objects				\$27,342.09
900 <u>Other Uses of Funds</u>				
910 Redemption of Principal				383,332.62
Total Other Uses of Funds				\$383,332.62
Total 5140 Leases and Other Right-to-Use Arrangements				\$410,674.71

LEA : 111444602 Mifflin County SD

Printed 12/16/2025 10:35:36 AM

General Fund (10)				
5200 Interfund Transfers – Out	<u>Elementary</u>	<u>Secondary</u>	<u>Federal</u>	<u>Total</u>
900 <u>Other Uses of Funds</u>				
939 Other Fund Transfers				10,669,238.15
Total Other Uses of Funds				\$10,669,238.15
Total 5200 Interfund Transfers – Out				\$10,669,238.15

LEA : 111444602 Mifflin County SD

Printed 12/16/2025 10:35:36 AM

General Fund (10)

5230 Capital Projects Fund Transfers	<u>Elementary</u>	<u>Secondary</u>	<u>Federal</u>	<u>Total</u>
900 <u>Other Uses of Funds</u>				
939 Other Fund Transfers				10,669,238.15
Total Other Uses of Funds				\$10,669,238.15
Total 5230 Capital Projects Fund Transfers				\$10,669,238.15

LEA : 111444602 Mifflin County SD

Printed 12/16/2025 10:35:09 AM

Other Capital Projects Fund (39)

2000 Support Services

Total

700 Property

762 Capitalized Equipment - Replacement

45,327.47

Total Property

\$45,327.47

Total 2000 Support Services

\$45,327.47

LEA : 111444602 Mifflin County SD

Printed 12/16/2025 10:35:09 AM

Other Capital Projects Fund (39)

2600 Operation and Maintenance of Plant Services	<u>Elementary</u>	<u>Secondary</u>	<u>Federal</u>	<u>Total</u>
700 <u>Property</u>				
762 Capitalized Equipment - Replacement				45,327.47
Total Property				\$45,327.47
Total 2600 Operation and Maintenance of Plant Services				\$45,327.47

LEA : 111444602 Mifflin County SD

Printed 12/16/2025 10:35:09 AM

Other Capital Projects Fund (39)

2620 Operation of Buildings Services	<u>Elementary</u>	<u>Secondary</u>	<u>Federal</u>	<u>Total</u>
700 <u>Property</u>				
762 Capitalized Equipment - Replacement				45,327.47
Total Property				\$45,327.47
Total 2620 Operation of Buildings Services				\$45,327.47

LEA : 111444602 Mifflin County SD

Printed 12/16/2025 10:35:32 AM

Other Capital Projects Fund (39)

4000 Facilities Acquisition, Construction and Improvement Services

Total

400	<u>Purchased Property Services</u>	
450	Construction Services	272,998.00
Total Purchased Property Services		\$272,998.00
700	<u>Property</u>	
710	Land and Improvements	11,352,929.78
Total Property		\$11,352,929.78
Total 4000 Facilities Acquisition, Construction and Improvement Services		\$11,625,927.78

LEA : 111444602 Mifflin County SD

Printed 12/16/2025 10:35:32 AM

Other Capital Projects Fund (39)

4200 Existing Site Improvement Services

Elementary

Secondary

Federal

Total

700 Property

710 Land and Improvements

11,352,929.78

Total Property				\$11,352,929.78
Total 4200 Existing Site Improvement Services				\$11,352,929.78

LEA : 111444602 Mifflin County SD

Printed 12/16/2025 10:35:32 AM

Other Capital Projects Fund (39)

4600 Existing Building Improvement Services

Elementary

Secondary

Federal

Total

400 Purchased Property Services

450 Construction Services

272,998.00

Total Purchased Property Services				\$272,998.00
Total 4600 Existing Building Improvement Services				\$272,998.00

LEA : 111444602 Mifflin County SD

Printed 12/16/2025 10:35:13 AM

Debt Service Fund (40)

2000 Support Services

800 Other Objects

810 Dues and Fees	146,043.01
Total Other Objects	\$146,043.01
Total 2000 Support Services	\$146,043.01

<u>Elementary</u>	<u>Secondary</u>	<u>Federal</u>	<u>Total</u>
-------------------	------------------	----------------	--------------

<u>Elementary</u>	<u>Secondary</u>	<u>Federal</u>	<u>Total</u>
-------------------	------------------	----------------	--------------

<u>Elementary</u>	<u>Secondary</u>	<u>Federal</u>	<u>Total</u>
-------------------	------------------	----------------	--------------

146,043.01

\$146,043.01

\$146,043.01

<u>Elementary</u>	<u>Secondary</u>	<u>Federal</u>	<u>Total</u>
-------------------	------------------	----------------	--------------

<u>Elementary</u>	<u>Secondary</u>	<u>Federal</u>	<u>Total</u>
-------------------	------------------	----------------	--------------

<u>Elementary</u>	<u>Secondary</u>	<u>Federal</u>	<u>Total</u>
-------------------	------------------	----------------	--------------

146,043.01

\$146,043.01

\$146,043.01

LEA : 111444602 Mifflin County SD

Printed 12/16/2025 10:35:42 AM

Debt Service Fund (40)

5000 Other Expenditures and Financing Uses

Total

900 Other Uses of Funds

910 Redemption of Principal	13,021,809.58
939 Other Fund Transfers	3,412,763.00

Total Other Uses of Funds	\$16,434,572.58
Total 5000 Other Expenditures and Financing Uses	\$16,434,572.58

LEA : 111444602 Mifflin County SD

Printed 12/16/2025 10:35:42 AM

Debt Service Fund (40)

5100 Debt Service / Other Expenditures and Financing Uses	<u>Elementary</u>	<u>Secondary</u>	<u>Federal</u>	<u>Total</u>
900 <u>Other Uses of Funds</u>				
910 Redemption of Principal				13,021,809.58
Total Other Uses of Funds				\$13,021,809.58
Total 5100 Debt Service / Other Expenditures and Financing Uses				\$13,021,809.58

LEA : 111444602 Mifflin County SD

Printed 12/16/2025 10:35:42 AM

Debt Service Fund (40)

5120 Debt Service – Refunded Bonds	<u>Elementary</u>	<u>Secondary</u>	<u>Federal</u>	<u>Total</u>
900 <u>Other Uses of Funds</u>				
910 Redemption of Principal				13,021,809.58
Total Other Uses of Funds				\$13,021,809.58
Total 5120 Debt Service – Refunded Bonds				\$13,021,809.58

Page - 4 of 5

<u>Elementary</u>	<u>Secondary</u>	<u>Federal</u>	<u>Total</u>
-------------------	------------------	----------------	--------------

<u>Elementary</u>	<u>Secondary</u>	<u>Federal</u>	<u>Total</u>
-------------------	------------------	----------------	--------------

<u>Elementary</u>	<u>Secondary</u>	<u>Federal</u>	<u>Total</u>
-------------------	------------------	----------------	--------------

3,412,763.00

\$3,412,763.00

\$3,412,763.00

LEA : 111444602 Mifflin County SD

Printed 12/16/2025 10:35:42 AM

Debt Service Fund (40)

5210 General Fund Transfers	<u>Elementary</u>	<u>Secondary</u>	<u>Federal</u>	<u>Total</u>
900 <u>Other Uses of Funds</u>				
939 Other Fund Transfers				3,412,763.00
Total Other Uses of Funds				\$3,412,763.00
Total 5210 General Fund Transfers				\$3,412,763.00

LEA : 111444602 Mifflin County SD

Printed 12/16/2025 10:35:46 AM

	<u>General Fund(10)</u>	<u>Student Sponsored Activity Fund(21)</u>	<u>Public Purpose Trust(27)</u>	<u>Other Compt Approved (28)</u>	<u>Athletic / Activity(29)</u>
1000 <u>Instruction</u>					
1100 Regular Programs - Elementary / Secondary	33,008,456.67				
1200 Special Programs - Elementary / Secondary	16,685,159.94				
1300 Vocational Education	3,808,438.61				
1400 Other Instructional Programs - Elementary / Secondary	1,406,837.13				
1500 Nonpublic School Programs	100,508.71				
Total Instruction	\$55,009,401.06				
2000 <u>Support Services</u>					
2100 Support Services - Students	2,908,870.36				
2200 Support Services - Instructional Staff	2,006,124.52				
2300 Support Services - Administration	4,855,250.74				
2400 Support Services - Pupil Health	1,042,502.28				
2500 Support Services - Business	1,096,717.79				
2600 Operation and Maintenance of Plant Services	7,618,660.83				
2700 Student Transportation Services	5,750,531.97				
2800 Support Services - Central	2,141,280.46				
Total Support Services	\$27,419,938.95				
3000 <u>Operation of Non-Instructional Services</u>					
3200 Student Activities	1,510,520.64				
3300 Community Services	29,160.88				
Total Operation of Non-Instructional Services	\$1,539,681.52				
4000 <u>Facilities Acquisition, Construction and Improvement Services</u>					
4200 Existing Site Improvement Services					
4500 Building Acquisition and Construction Services - Original and Additional	148,442.10				
4600 Existing Building Improvement Services					
Total Facilities Acquisition, Construction and Improvement Services	\$148,442.10				
5000 <u>Other Expenditures and Financing Uses</u>					
5100 Debt Service / Other Expenditures and Financing Uses	7,980,373.09				
5200 Interfund Transfers - Out	10,669,238.15				
Total Other Expenditures and Financing Uses	\$18,649,611.24				
TOTAL ACTUAL EXPENDITURES & OTHER FINANCING USES	\$102,767,074.87				

LEA : 111444602 Mifflin County SD

Printed 12/16/2025 10:35:46 AM

	<u>Capital Reserve (690.1850)(31)</u>	<u>Capital Reserve (1431)(32)</u>	<u>Other Capital Projects Fund(39)</u>	<u>Debt Service(40)</u>	<u>Permanent(90)</u>
1000 <u>Instruction</u>					
1100 Regular Programs - Elementary / Secondary					
1200 Special Programs - Elementary / Secondary					
1300 Vocational Education					
1400 Other Instructional Programs - Elementary / Secondary					
1500 Nonpublic School Programs					
Total Instruction					
2000 <u>Support Services</u>					
2100 Support Services - Students					
2200 Support Services - Instructional Staff					
2300 Support Services - Administration				146,043.01	
2400 Support Services - Pupil Health					
2500 Support Services - Business					
2600 Operation and Maintenance of Plant Services			45,327.47		
2700 Student Transportation Services					
2800 Support Services - Central					
Total Support Services			\$45,327.47	\$146,043.01	
3000 <u>Operation of Non-Instructional Services</u>					
3200 Student Activities					
3300 Community Services					
Total Operation of Non-Instructional Services					
4000 <u>Facilities Acquisition, Construction and Improvement Services</u>					
4200 Existing Site Improvement Services			11,352,929.78		
4500 Building Acquisition and Construction Services - Original and Additional					
4600 Existing Building Improvement Services			272,998.00		
Total Facilities Acquisition, Construction and Improvement Services			\$11,625,927.78		
5000 <u>Other Expenditures and Financing Uses</u>					
5100 Debt Service / Other Expenditures and Financing Uses				13,021,809.58	
5200 Interfund Transfers - Out				3,412,763.00	
Total Other Expenditures and Financing Uses				\$16,434,572.58	
TOTAL ACTUAL EXPENDITURES & OTHER FINANCING USES			\$11,671,255.25	\$16,580,615.59	

LEA : 111444602 Mifflin County SD

Printed 12/16/2025 10:35:46 AM

	<u>Total</u>
1000 <u>Instruction</u>	
1100 Regular Programs - Elementary / Secondary	33,008,456.67
1200 Special Programs - Elementary / Secondary	16,685,159.94
1300 Vocational Education	3,808,438.61
1400 Other Instructional Programs - Elementary / Secondary	1,406,837.13
1500 Nonpublic School Programs	100,508.71
Total Instruction	\$55,009,401.06
2000 <u>Support Services</u>	
2100 Support Services - Students	2,908,870.36
2200 Support Services - Instructional Staff	2,006,124.52
2300 Support Services - Administration	5,001,293.75
2400 Support Services - Pupil Health	1,042,502.28
2500 Support Services - Business	1,096,717.79
2600 Operation and Maintenance of Plant Services	7,663,988.30
2700 Student Transportation Services	5,750,531.97
2800 Support Services - Central	2,141,280.46
Total Support Services	\$27,611,309.43
3000 <u>Operation of Non-Instructional Services</u>	
3200 Student Activities	1,510,520.64
3300 Community Services	29,160.88
Total Operation of Non-Instructional Services	\$1,539,681.52
4000 <u>Facilities Acquisition, Construction and Improvement Services</u>	
4200 Existing Site Improvement Services	11,352,929.78
4500 Building Acquisition and Construction Services - Original and Additional	148,442.10
4600 Existing Building Improvement Services	272,998.00
Total Facilities Acquisition, Construction and Improvement Services	\$11,774,369.88
5000 <u>Other Expenditures and Financing Uses</u>	
5100 Debt Service / Other Expenditures and Financing Uses	21,002,182.67
5200 Interfund Transfers - Out	14,082,001.15
Total Other Expenditures and Financing Uses	\$35,084,183.82
TOTAL ACTUAL EXPENDITURES & OTHER FINANCING USES	\$131,018,945.71

LEA : 111444602 Mifflin County SD

Printed 12/16/2025 10:35:58 AM

PSERS Salary Data (Salary Data should relate to the General Fund only)

Amount	Description	Amount
	Total Salary Base for salaries subject to PSERS withholding	33,694,858.12
	Total Federally Funded salaries subject to PSERS withholding	3,167,372.28

Title I Expenditure Data

Amount	Description	Amount
	Expenditures Funded with Current Title I Funds	1,101,087.67
	Expenditures Funded with Carry over Title I Funds	519,986.19
Total	Title I Expenditure Data	\$1,621,073.86

Title IV Revenue Data

Amount	Description	Amount
	Revenue from Title IV-A-1: Student Support and Academic Enrichment Grants	242,938.27

1 .	<u>Current Special Education Expenditures within Function 1000</u> See list of exclusions in the note below.	19,777,717.59
2 .	<u>Current Special Education Expenditures within Function 2000</u> See list of exclusions in the note below.	6,688,688.86
2A.	<u>Current Special Education Expenditures within Sub-Function 2100</u> This data should also be included in line 2 above. See list of exclusions in the note below.	1,341,394.09
2B.	<u>Current Special Education Expenditures within Sub-Function 2200</u> This data should also be included in line 2 above. See list of exclusions in the note below.	816,354.15
2C.	<u>Current Special Education Expenditures within Sub-Function 2700</u> This data should also be included in line 2 above. See list of exclusions in the note below.	1,169,356.38
3.	<u>Current Special Education Expenditures within Sub-Function 3100</u> See list of exclusions in the note below.	728,307.73
4.	<u>Current Special Education Expenditures within Sub-Function 3200</u> See list of exclusions in the note below.	296,680.81

Note: The Current Special Education Expenditure amounts for each line should be calculated as follows:

- * Include the total expenditures for special education costs from all governmental funds and the food service fund 51 for the function/sub-function requested
- * Exclude data from sub-functions: 1243,1450,1500,1600,1807,2280,2450,2750,2990
- * Exclude data from objects: 322,511,512,516,561,562,564,566,592,593,594,595,596,597,700,830,899

Benefits for Staff Relative to Collective Bargaining Agreements

	OBJECT	COVERED	NOT COVERED	TOTAL
10 General Fund	No Self Insurance data to report			
	211 Medical Insurance	9,114,128.41	928,619.63	10,042,748.04
	212 Dental Insurance	297,605.84	24,546.39	322,152.23
	215 Eye Care Insurance	45,365.50	4,205.20	49,570.70
	216 Prescription Insurance			
	271 Self-Insurance Medical Benefits			
	272 Self-Insurance Dental Benefits			
	275 Self-Insurance Eye Care Benefits			
	276 Self-Insurance Prescription Benefits			
	FUND TOTAL	\$9,457,099.75	\$957,371.22	\$10,414,470.97
50 Enterprise Fund	No Self Insurance data to report			
	211 Medical Insurance	223,914.15		223,914.15
	212 Dental Insurance	11,630.44		11,630.44
	215 Eye Care Insurance	1,925.70		1,925.70
	216 Prescription Insurance			
	271 Self-Insurance Medical Benefits			
	272 Self-Insurance Dental Benefits			
	275 Self-Insurance Eye Care Benefits			
	276 Self-Insurance Prescription Benefits			
	FUND TOTAL	\$237,470.29		\$237,470.29
60 Internal Service Fund	No Self Insurance data to report			
	211 Medical Insurance			
	212 Dental Insurance			
	215 Eye Care Insurance			
	216 Prescription Insurance			
	271 Self-Insurance Medical Benefits			
	272 Self-Insurance Dental Benefits			
	275 Self-Insurance Eye Care Benefits			
	276 Self-Insurance Prescription Benefits			
	FUND TOTAL			
Total of All Funds		\$9,694,570.04	\$957,371.22	\$10,651,941.26

LEA : 111444602 Mifflin County SD

Printed 12/16/2025 10:36:08 AM

Function	Special Education (Prior Year)	Nonspecial Education (Prior Year)	Total (Prior Year)	Special Education (Current Year)	Nonspecial Education (Current Year)	Total (Current Year)
2120 Guidance Services	345,337.00	1,419,590.00	1,764,927.00	365,149.00	1,403,379.00	1,768,528.00
2140 Psychological Services	458,947.00	152,982.00	611,929.00	564,017.00	188,005.15	752,022.15
2150 Speech Pathology and Audiology Services						
2160 Social Work Services	69,195.00	284,443.00	353,638.00	79,459.00	305,384.77	384,843.77
2260 Instruction and Curriculum Development Services	117,667.00	483,695.80	601,362.80	124,560.00	478,724.00	603,284.00
2350 Legal and Accounting Services	32,396.00	33,944.32	66,340.32	14,234.00	113,306.00	127,540.00
2420 Medical Services				215,246.00	827,256.00	1,042,502.00
2440 Nursing Services	187,811.00	772,042.78	959,853.78			
2700 Student Transportation Services	1,048,657.00	4,310,752.95	5,359,409.95	1,187,315.00	4,563,216.92	5,750,531.92
Total	\$2,260,010.00	\$7,457,450.85	\$9,717,460.85	\$2,549,980.00	\$7,879,271.84	\$10,429,251.84

LEA : 111444602 Mifflin County SD

	(PRINCIPAL AMOUNTS ONLY)							
<u>GOVERNMENTAL FUNDS/ ACTIVITIES</u>	Short-Term Borrowing	General Obligation Bonds/Notes	Authority Building Obligations	Leases, Other Right to Use Arrangements	Extended Term Financing Agreements	Other Long Term Debt/Liabilities	OPEB, Comp Abs, Net Pension Liab	Total
1. Debt at Beginning of Fiscal Year		63,533,895.65		773,715.31		4,236,498.00	92,562,807.00	161,106,915.96
2. Additional Debt Incurred During Year		15,917,763.00		151,356.60		777,184.00	779,788.11	17,626,091.71
3. Retirements and Repayments		18,346,000.00		383,332.62		2,217,597.00	9,229,704.00	30,176,633.62
4. Debt at End of Fiscal Year		61,105,658.65		541,739.29		2,796,085.00	84,112,891.11	148,556,374.05
5. Accreted Interest at End Of Fiscal Year								
6. Total Debt and Accreted Interest		61,105,658.65		541,739.29		2,796,085.00	84,112,891.11	148,556,374.05
7. Current Portion P&I - Due within 1 year		7,973,508.00		373,252.70		635,487.00	108,809.00	9,091,056.70
8. Interest Paid during current fiscal year		2,073,698.79		27,342.08		52,270.00		2,153,310.87

(PRINCIPAL AMOUNTS ONLY)								
<u>PROPRIETARY FUNDS</u>	Short-Term Borrowing	General Obligation Bonds/Notes	Authority Building Obligations	Leases, Other Right to Use Arrangements	Extended Term Financing Agreements	Other Long Term Debt/Liabilities	OPEB, Comp Abs, Net Pension Liab	Total
1. Debt at Beginning of Fiscal Year							2,559,283.84	2,559,283.84
2. Additional Debt Incurred During Year							138,575.00	138,575.00
3. Retirements and Repayments							1,012.00	1,012.00
4. Debt at End of Fiscal Year							2,696,846.84	2,696,846.84
5. Accreted Interest at End Of Fiscal Year								
6. Total Debt and Accreted Interest							2,696,846.84	2,696,846.84
7. Current Portion P&I - Due within 1 year							1,767.00	1,767.00
8. Interest Paid during current fiscal year								

LEA : 111444602 Mifflin County SD

Total Principal and Interest Payments Made by Your School - All Funds

Function	Fund		Principal (910)	Principal (920)	Interest (830)	Total (Principal +Interest)	Misc Other Uses (990)
5110	10	General Fund	5,496,000.00		2,073,698.38	7,569,698.38	
5110	20	Special Revenue Funds					
5110	30	Capital Projects Funds					
5110	40	Debt Service Fund					
5110	90	Permanent Fund					
5120	10	General Fund					
5120	20	Special Revenue Funds					
5120	30	Capital Projects Funds					
5120	40	Debt Service Fund	13,021,809.58			13,021,809.58	
5140	10	General Fund	383,332.62		27,342.09	410,674.71	
5140	20	Special Revenue Funds					
5140	30	Capital Projects Funds					
5140	40	Debt Service Fund					
5140	90	Permanent Fund					
Total Debt Payments - Governmental Funds			\$18,901,142.20		\$2,101,040.47	\$21,002,182.67	

Function	Fund		Principal (910)	Principal (920)	Interest (830)	Total (Principal +Interest)
5110	50	Enterprise Fund				
5110	60	Internal Service Fund				
5120	50	Enterprise Fund				
5120	60	Internal Service Fund				
5140	50	Enterprise Fund				
5140	60	Internal Service Fund				
Total Debt Payments - Proprietary Funds						

LEA : 111444602 Mifflin County SD

Debt Category	Debt Issue Date (MM/YYYY)	Principal Amounts Only				Current Portion Due Within One Year (Principal and Interest)	Interest Paid During Fiscal Year
		Debt at Beginning of Fiscal Year	Additions	Reductions / Repayments	Debt at End of Fiscal Year		
General Obligation Bonds/Notes – CIB	12/2025		12,505,000.00		12,505,000.00	2,248,625.00	152,839.00
General Obligation Bonds/Notes – CIB	06/2024	13,490,000.00		1,680,000.00	11,810,000.00	2,579,500.00	458,254.00
General Obligation Bonds/Notes – CIB	06/2024	8,030,000.00			8,030,000.00	321,200.00	238,223.33
General Obligation Bonds/Notes – CIB	11/2023	113,895.65	3,412,763.00	1,000.00	3,525,658.65	6,450.00	18,174.46
General Obligation Bonds/Notes – CIB	03/2020	11,215,000.00		1,370,000.00	9,845,000.00	1,801,898.00	370,560.00
General Obligation Bonds/Notes – CIB	05/2019	5,995,000.00		540,000.00	5,455,000.00	679,768.00	140,668.00
General Obligation Bonds/Notes – CIB	04/2018	8,395,000.00		5,000.00	8,390,000.00	281,599.00	276,743.00
General Obligation Bonds/Notes – CIB	04/2018	1,550,000.00		5,000.00	1,545,000.00	54,468.00	49,612.00
General Obligation Bonds/Notes – CIB	12/2016	14,745,000.00		14,745,000.00			368,625.00
Leases and Other Right to Use Arrangements		773,715.31	151,356.60	383,332.62	541,739.29	373,252.70	27,342.08
Other Long Term Debt/Liabilities		4,236,498.00	777,184.00	2,217,597.00	2,796,085.00	635,487.00	52,270.00
Other Post-Employment Benefits (OPEB)		6,720,698.00	4,878.11		6,725,576.11		
Compensated Absences		2,114,918.00	774,910.00		2,889,828.00	108,809.00	
Net Pension Liability		83,727,191.00		9,229,704.00	74,497,487.00		
Totals for Debt Entered:		\$161,106,915.96	\$17,626,091.71	\$30,176,633.62	\$148,556,374.05	\$9,091,056.70	\$2,153,310.87

Debt Category	Debt Issue Date (MM/YYYY)	Principal Amounts Only				Current Portion Due Within One Year (Principal and Interest)	Interest Paid During Fiscal Year
		Debt at Beginning of Fiscal Year	Additions	Reductions / Repayments	Debt at End of Fiscal Year		
Other Post-Employment Benefits (OPEB)		143,654.85		1,012.00	142,642.85		
Compensated Absences		55,132.46	13,025.00		68,157.46	1,767.00	
Net Pension Liability		2,360,496.53	125,550.00		2,486,046.53		
Totals for Debt Entered:		\$2,559,283.84	\$138,575.00	\$1,012.00	\$2,696,846.84	\$1,767.00	

LEA : 111444602 Mifflin County SD

Printed 12/16/2025 10:36:14 AM

General Fund (10)

Section 1: Tuition/Purchased Services as Reported within Expenditure Detail	Amount
Tuition Reported in General Fund Expenditures 1000-560	8,563,537.39
Purchased Services in General Fund Expenditures 1000-594 and 1000-597	4,991.81
Section 1 Total	\$8,568,529.20

Section 2: Tuition Paid to Institution Types During Fiscal Year	Tuition Paid For Nonspecial Education	Tuition Paid For Special Education	Total
1 1306 Institutions	1,087.87	62,288.84	63,376.71
2 Institutionalized Children's Programs	936.00	10,247.97	11,183.97
3 Juveniles Incarcerated in Adult Facilities			
4 Residential Treatment Facilities	21,170.98	78,891.54	100,062.52
5 Other Local Education Agencies	50,090.17	64,154.35	114,244.52
6 Brick and Mortar Charter Schools	423,369.77	517,656.02	941,025.79
7 Cyber Charter Schools	2,116,727.28	1,887,440.58	4,004,167.86
8 Career and Technology Centers	1,419,854.02	756,774.98	2,176,629.00
9 Approved Private Schools	12,519.48	9,450.00	21,969.48
10 PA Chartered Schools for the Deaf and Blind			
11 Private Residential Rehabilitative Institutions	39,901.28	5,130.96	45,032.24
12 Juvenile Detention Centers	18,970.86		18,970.86
13 Special Program Jointures			
14 Other Tuition Not Included Elsewhere In This Section	66,686.55	1,005,179.70	1,071,866.25
Section 2 Total	\$4,171,314.26	\$4,397,214.94	\$8,568,529.20

LEA : 111444602 Mifflin County SD

Printed 12/16/2025 10:36:22 AM

Food Service / Cafeteria Operations Fund (51)

3000 Operation of Non-Instructional Services		Total
100 <u>Personnel Services – Salaries</u>		
100 Personnel Services – Salaries		1,194,916.81
Total Personnel Services – Salaries		\$1,194,916.81
200 <u>Personnel Services – Employee Benefits</u>		
210 Group Insurance – Contracted Provider		247,167.12
220 Social Security Contributions		90,313.32
230 PSERS Retirement Contributions		321,342.07
250 Unemployment Compensation		2,390.20
260 Workers' Compensation		5,976.11
280 Other Post-Employment Benefits (OPEB)		6,021.31
291 Other Retirement Plans		8,907.73
292 Health Savings Accounts		23,323.48
Total Personnel Services – Employee Benefits		\$705,441.34
400 <u>Purchased Property Services</u>		
410 Cleaning Services		10,957.39
430 Repairs and Maintenance Services		37,064.26
460 Extermination Services		500.00
Total Purchased Property Services		\$48,521.65
500 <u>Other Purchased Services</u>		
520 Insurance – General		17,097.34
530 Communications		1,257.37
540 Advertising		840.82
550 Printing and Binding		1,366.00
570 Food Service Management		159,880.09
580 Travel		138.99
Total Other Purchased Services		\$180,580.61
600 <u>Supplies</u>		
610 General Supplies		131,886.49
630 Food		1,543,051.56
Total Supplies		\$1,674,938.05
800 <u>Other Objects</u>		
890 Miscellaneous Expenditures		4,793.35
Total Other Objects		\$4,793.35
Total 3000 Operation of Non-Instructional Services		\$3,809,191.81

LEA : 111444602 Mifflin County SD

Printed 12/16/2025 10:36:22 AM

Food Service / Cafeteria Operations Fund (51)

3100 Food Services	Elementary	Secondary	Federal	Total
100 <u>Personnel Services – Salaries</u>				
100 Personnel Services – Salaries				1,194,916.81
Total Personnel Services – Salaries				\$1,194,916.81
200 <u>Personnel Services – Employee Benefits</u>				
210 Group Insurance – Contracted Provider				247,167.12
220 Social Security Contributions				90,313.32
230 PSERS Retirement Contributions				321,342.07
250 Unemployment Compensation				2,390.20
260 Workers' Compensation				5,976.11
280 Other Post-Employment Benefits (OPEB)				6,021.31
291 Other Retirement Plans				8,907.73
292 Health Savings Accounts				23,323.48
Total Personnel Services – Employee Benefits				\$705,441.34
400 <u>Purchased Property Services</u>				
410 Cleaning Services				10,957.39
430 Repairs and Maintenance Services				37,064.26
460 Extermination Services				500.00
Total Purchased Property Services				\$48,521.65
500 <u>Other Purchased Services</u>				
520 Insurance – General				17,097.34
530 Communications				1,257.37
540 Advertising				840.82
550 Printing and Binding				1,366.00
570 Food Service Management				159,880.09
580 Travel				138.99
Total Other Purchased Services				\$180,580.61
600 <u>Supplies</u>				
610 General Supplies				131,886.49
630 Food				1,543,051.56
Total Supplies				\$1,674,938.05
800 <u>Other Objects</u>				
890 Miscellaneous Expenditures				4,793.35
Total Other Objects				\$4,793.35
Total 3100 Food Services				\$3,809,191.81

	<u>Food Service(51)</u>	<u>Child Care Operations(52)</u>	<u>Other Enterprise(58)</u>	<u>Internal Service(60)</u>	<u>Total</u>
3000 <u>Operation of Non-Instructional Services</u>					
3100 Food Services	3,809,191.81				3,809,191.81
Total Operation of Non-Instructional Services	\$3,809,191.81				\$3,809,191.81
TOTAL ACTUAL EXPENDITURES & OTHER FINANCING USES	\$3,809,191.81				\$3,809,191.81

LEA : 111444602 Mifflin County SD

Printed 12/16/2025 10:36:38 AM

Fund	School	School Number	Local Personnel	Local Nonpersonnel	State Personnel	State Nonpersonnel	Federal Personnel	Federal Nonpersonnel	Total	Explanation
10										
	East Derry El Sch	6261	5,454.00	1,160.00	8,327.00	1,634.00	2,178.00	189.00	18,942.00	
	Indian Valley El Sch	8182	5,217.00	1,072.00	7,354.00	1,562.00	2,118.00	163.00	17,486.00	
	Indian Valley Intrmd Sch	8183	4,636.00	1,285.00	6,157.00	1,770.00	174.00	72.00	14,094.00	
	Lewistown El Sch	7789	5,702.00	1,180.00	8,445.00	1,625.00	2,801.00	263.00	20,016.00	
	Lewistown Intrmd Sch	8184	5,237.00	1,135.00	6,951.00	1,524.00	271.00	73.00	15,191.00	
	Mifflin Co HS	8187	6,659.00	2,005.00	8,833.00	2,772.00	562.00	85.00	20,916.00	
	Mifflin Co JHS	8186	5,696.00	1,166.00	7,576.00	1,642.00	126.00	77.00	16,283.00	
	Mifflin Co MS	8185	4,506.00	1,108.00	5,981.00	1,502.00	242.00	86.00	13,425.00	
	Strodes Mills El Sch	3196	4,608.00	1,131.00	6,695.00	1,521.00	2,446.00	239.00	16,640.00	
Total			47,715.00	11,242.00	66,319.00	15,552.00	10,918.00	1,247.00	152,993.00	