

LEA Name : Mifflin County SD  
Address : 201 Eighth St - Highland Park  
Lewistown , PA 17044

County : Mifflin  
AUN Number : 111444602  
LEA Type : SD

## Annual Financial Report Accuracy Certification Statement

For Fiscal Year Ending

6/30/2023

Pennsylvania Department of Education

&

Office of Comptroller Operations

PDE-2056: Intermediate Unit

PDE-2057: School District, AVTS/CTC, Charter School,  
and Special Program Jointure

**CERTIFICATION:** By signing this page I agree that the electronic data submitted is a complete and accurate statement of the financial operations and status of the local education agency for the fiscal year. It has been prepared in accordance with generally accepted accounting principles and established Commonwealth of PA reporting guidelines.



Chief School Administrator Signature

11/20/2023  
Date



Board Secretary Signature

11/20/2023  
Date

Melinda Kenepp

Contact Person

mkk08@mcsdk12.org

Contact Person E-mail Address

(717)248-0148

Ext :

Contact Person Telephone Number

Contact Person Fax Number

**Audit Certification**  
**Annual Financial Report:**  
For Fiscal Year Ending **6/30/2023**  
**(Pursuant to PA School Code Section 218(b))**

LEA Name : Mifflin County SD

AUN Number : 111444602

County : Mifflin

<b>Audit Certification Due:</b> 12/31/2023
---

This certification is applicable to the Annual Financial Report data submitted through the Consolidated Financial Reporting System (CFRS).


CERTIFICATION: By signing this page I agree that the financial statements of the school have been properly audited as noted above pursuant to Article XXIV, and in the auditor's professional opinion, the Annual Financial Report (PDE-2057) submitted through CFRS is materially consistent with the audited financial statements.

Chief School Administrator

  
\_\_\_\_\_  
Signature

12/14/2023  
\_\_\_\_\_  
Date

Board Secretary

  
\_\_\_\_\_  
Signature

12/14/2023  
\_\_\_\_\_  
Date

Melinda Kenep

\_\_\_\_\_  
Contact Person

mkk08@mcsdk12.org

\_\_\_\_\_  
Contact Person E-mail Address

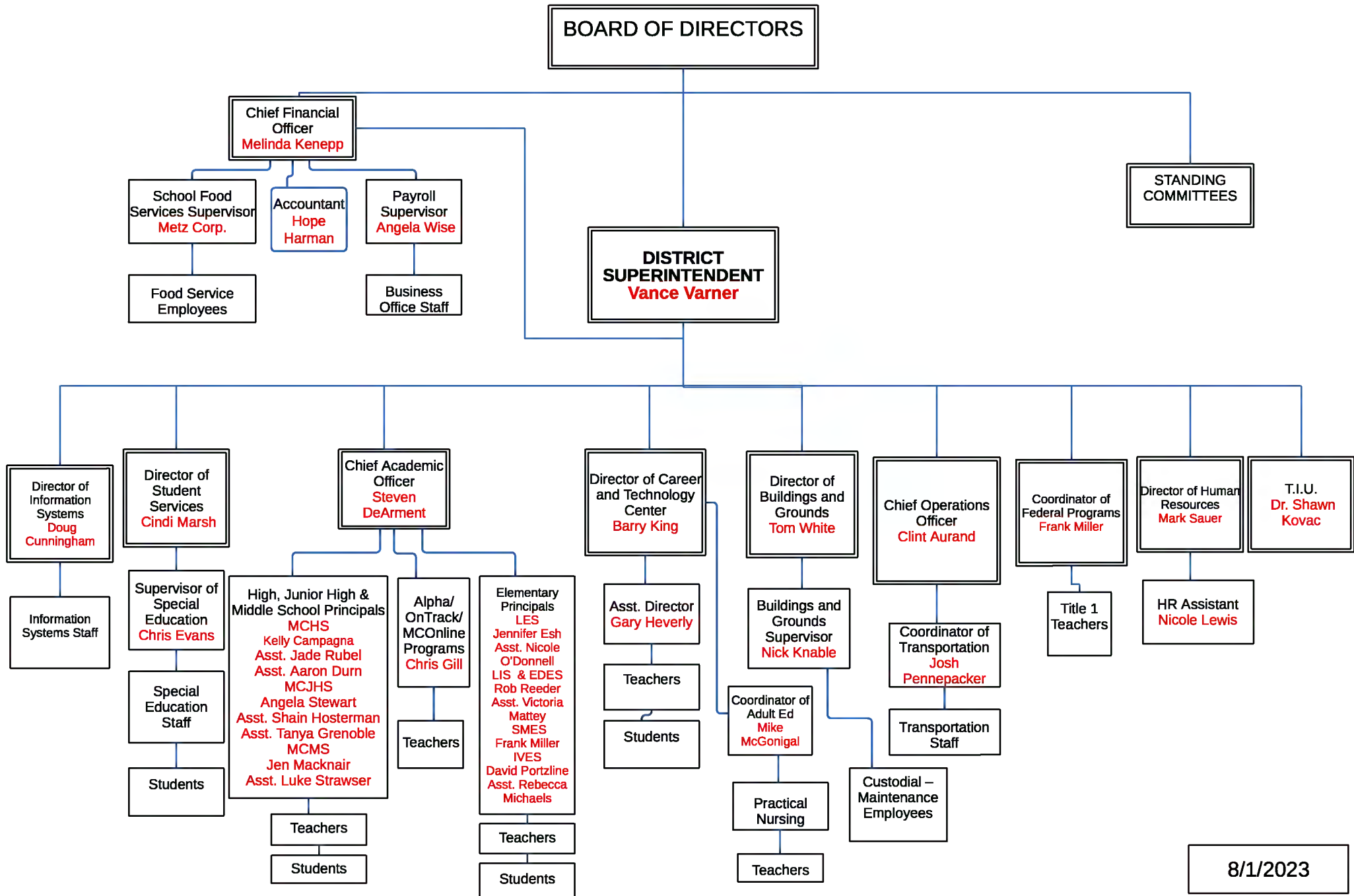
(717)248-0148

Ext :

\_\_\_\_\_  
Contact Person Telephone Number

\_\_\_\_\_  
Contact Person Fax Number

# ADMINISTRATIVE ORGANIZATION MIFFLIN COUNTY SCHOOL DISTRICT



8/1/2023



Book Policy Manual  
Section 700 Property  
Title Property Records - Equipment Definition  
Code 706.2  
Status Active  
Adopted August 24, 2023

### **Purpose**

Independent asset units shall be classified as equipment in the district's accounting records which have a per unit cost equal to or greater than \$5,000 and have an estimated useful life of one (1) year or more.

In addition to the above criteria, the item should:

1. Retain its original shape, appearance, and character with use;
2. Not lose its identity through incorporation or fabrication into a different or more complex unit or substance; and
3. Be more feasible to repair rather than replace when a failure occurs.

If an independent asset does not meet the criteria listed above, it should be classified as a supply item.

The cost of normal maintenance and repairs that do not add to the value of the asset or materially extend assets lives are not capitalized.

### **Capital Assets**

Buildings, building improvements, equipment, and improvements other than buildings of the school district and its component unit are depreciated using the straight-line method over the following estimated lives:[1]

<b><u>Assets</u></b>	<b><u>Years</u></b>
Buildings	15 - 40
Building improvements	5 - 30
Equipment	3 - 20
Improvements other than buildings	10 - 20

Legal 1. Pol. 622  
Pol. 706

Val Number	Description	Justification
40820	Data has been entered for function 5310 - Transfers To Component Units. Identify the Component Unit.  Exp detail, Fund 10, 5310-940: \$460,576.68	Mifflin County Academy of Science and Technology
50118	SOIN: Reductions/Retirements have been reported for Governmental Fund General Obligation Bonds, Extended Term Financing, and/or Other Long Term Debt/Liabilities. However, comparable entries have not been reported in Governmental Fund Expenditure Functions 5110 & 5120, Object 910. Please correct or provide a justification.  SOIN: Govt Funds GOB, Extended Term Financing, and/or Other Long Term Debt Retirements/Repayments: \$6,091,535.00 Govt Funds Expenditure Detail: Function 5110/5120, Object 910: \$5,467,186.00	AMORTIZATION OF DISCOUNTS/PREMIUMS RELATED TO VARIOUS BOND ISSUES REFLECTED ON THE GOVERNMENT-WIDE FINANCIAL STATEMENTS ONLY.
50380	CESE: The amount reported on Line 1 of the CESE exceeds the Governmental Fund special education expenditures in Function 1200. Please correct or provide a justification.	In addition to the 1200 function for special education, other function 1000 expenses were allocated to special education based on special education enrollment by building
50430	SESS - 2160 Social Work Services: SESS Schedule amounts for Special Education vary from prior year by 40% or more. Correct the data or enter a justification.  SESS Schedule 2160: \$62,381.88 Prior Year SESS Schedule 2160: \$42,298.50	Two full-time positions were added for social workers in January 2022. A full year was realized for both of these positions in 2022-2023.
50440	SESS - 2260 Instruction and Curriculum Development Services: SESS Schedule amounts for Special Education vary from prior year by 40% or more. Correct the data or enter a justification.  SESS Schedule 2260: \$104,394.44 Prior Year SESS Schedule 2260: \$67,573.16	District hired a Supervisor of Special Education on 7/01/2022. This was a new position added to the Special Education Department.
50450	SESS - 2350 Legal and Accounting Services: SESS Schedule amounts for Special Education vary from prior year by 40% or more. Correct the data or enter a justification.  SESS Schedule 2350: \$5,310.00 Prior Year SESS Schedule 2350: \$2,596.00	Legal fees for counsel engaged on special education matters were higher than the prior year. Our special ed enrollment has increased and the questions for counsel increased accordingly.

LEA : 111444602     Mifflin County SD

Printed 12/14/2023 10:00:32 AM

Amounts Expressed in Whole Dollars	<u>General Fund</u> <u>(10)</u>	<u>Student Sponsored</u> <u>Activity Fund</u> <u>(21)</u>	<u>Public Purpose Trust</u> <u>(27)</u>	<u>Other Compt Approved</u> <u>(28)</u>	<u>Athletic / Activity</u> <u>(29)</u>
<b>Assets And Deferred Outflows Of Resources</b>					
<b>Assets</b>					
0100 Cash and Cash Equivalents	28,486,682				
0110 Investments					
0120 Taxes Receivable	1,608,890				
0130 Due From Other Funds	3,266,313				
0141 Due From Other Governments	939,732				
0142 State Revenue Receivable	3,254,337				
0143 Federal Revenue Receivable	1,648,783				
0145 Other Intergovernmental Revenue Receivable					
0146 Due from Primary Government					
0147 Due from Component Unit					
0150 Other Receivables	1,725,692				
0170 Inventories					
0180 Prepaid Expenses (Expenditures)	32,016				
0190 Other Current Assets					
<b>Total Assets</b>	<b>\$40,962,445</b>				
0910 Deferred Outflows of Resources					
<b>Total Assets And Deferred Outflows Of Resources</b>	<b>\$40,962,445</b>				

LEA : 111444602     Mifflin County SD

Printed 12/14/2023 10:00:32 AM

Amounts Expressed in Whole Dollars		<u>Capital Reserve (690.</u> <u>1850)</u> <u>(31)</u>	<u>Capital Reserve (1431)</u> <u>(32)</u>	<u>Other Capital Projects</u> <u>Fund</u> <u>(39)</u>	<u>Debt Service</u> <u>(40)</u>	<u>Permanent</u> <u>(90)</u>
<b>Assets And Deferred Outflows Of Resources</b>						
<b>Assets</b>						
0100	Cash and Cash Equivalents			9,471,978	8,831	
0110	Investments					
0120	Taxes Receivable					
0130	Due From Other Funds			1,000,000		
0141	Due From Other Governments					
0142	State Revenue Receivable					
0143	Federal Revenue Receivable					
0145	Other Intergovernmental Revenue Receivable					
0146	Due from Primary Government					
0147	Due from Component Unit					
0150	Other Receivables					
0170	Inventories					
0180	Prepaid Expenses (Expenditures)					
0190	Other Current Assets					
<b>Total Assets</b>				<b>\$10,471,978</b>	<b>\$8,831</b>	
0910	Deferred Outflows of Resources					
<b>Total Assets And Deferred Outflows Of Resources</b>				<b>\$10,471,978</b>	<b>\$8,831</b>	

LEA : 111444602     Mifflin County SD

Printed 12/14/2023 10:00:32 AM

Amounts Expressed in Whole Dollars		<u>Total Governmental</u>
		<u>Funds</u>
<b>Assets And Deferred Outflows Of Resources</b>		
<b>Assets</b>		
0100 Cash and Cash Equivalents		37,967,491
0110 Investments		
0120 Taxes Receivable		1,608,890
0130 Due From Other Funds		4,266,313
0141 Due From Other Governments		939,732
0142 State Revenue Receivable		3,254,337
0143 Federal Revenue Receivable		1,648,783
0145 Other Intergovernmental Revenue Receivable		
0146 Due from Primary Government		
0147 Due from Component Unit		
0150 Other Receivables		1,725,692
0170 Inventories		
0180 Prepaid Expenses (Expenditures)		32,016
0190 Other Current Assets		
<b>Total Assets</b>		<b>\$51,443,254</b>
0910 Deferred Outflows of Resources		
<b>Total Assets And Deferred Outflows Of Resources</b>		<b>\$51,443,254</b>



LEA : 111444602     Mifflin County SD

Printed 12/14/2023 10:00:32 AM

Amounts Expressed in Whole Dollars	<u>General Fund</u> <u>(10)</u>	<u>Student Sponsored</u> <u>Activity Fund</u> <u>(21)</u>	<u>Public Purpose Trust</u> <u>(27)</u>	<u>Other Compt Approved</u> <u>(28)</u>	<u>Athletic / Activity</u> <u>(29)</u>
<b>Liabilities And Deferred Inflows Of Resources And Fund Balances</b>					
<b>Liabilities</b>					
0400 Due to Other Funds	1,000,000				
0411 Due to Other Governments					
0412 Due to Primary Government					
0413 Due to Component Unit					
0420 Accounts Payable	1,021,506				
0430 Contracts Payable					
0440 Current Portion of Long-Term Debt					
0450 Short-Term Payables					
0461 Accrued Salaries and Benefits	7,307,892				
0462 Payroll Deductions and Withholding	680,845				
0480 Unearned Revenues	4,773,945				
0490 Other Current Liabilities	55,515				
<b>Total Liabilities</b>	<b>\$14,839,703</b>				
0950 Deferred Inflows of Resources					
<b>Fund Balances</b>					
0810 Nonspendable Fund Balance	32,016				
0820 Restricted Fund Balance					
0830 Committed Fund Balance	302,546				
0840 Assigned Fund Balance	18,216,140				
0850 Unassigned Fund Balance	7,572,040				
<b>Total Fund Balances</b>	<b>\$26,122,742</b>				
<b>Total Liabilities, Deferred Inflows Of Resources And Fund Balances</b>	<b>\$40,962,445</b>				

LEA : 111444602     Mifflin County SD

Printed 12/14/2023 10:00:32 AM

Amounts Expressed in Whole Dollars		<u>Capital Reserve (690.</u> <u>1850)</u> <u>(31)</u>	<u>Capital Reserve (1431)</u> <u>(32)</u>	<u>Other Capital Projects</u> <u>Fund</u> <u>(39)</u>	<u>Debt Service</u> <u>(40)</u>	<u>Permanent</u> <u>(90)</u>
<b>Liabilities And Deferred Inflows Of Resources And Fund Balances</b>						
<b>Liabilities</b>						
0400	Due to Other Funds					
0411	Due to Other Governments					
0412	Due to Primary Government					
0413	Due to Component Unit					
0420	Accounts Payable			68,249		
0430	Contracts Payable					
0440	Current Portion of Long-Term Debt					
0450	Short-Term Payables					
0461	Accrued Salaries and Benefits					
0462	Payroll Deductions and Withholding					
0480	Unearned Revenues			3,000,000		
0490	Other Current Liabilities					
<b>Total Liabilities</b>				<b>\$3,068,249</b>		
0950	Deferred Inflows of Resources					
<b>Fund Balances</b>						
0810	Nonspendable Fund Balance					
0820	Restricted Fund Balance					
0830	Committed Fund Balance					
0840	Assigned Fund Balance			7,403,729	8,831	
0850	Unassigned Fund Balance					
<b>Total Fund Balances</b>				<b>\$7,403,729</b>	<b>\$8,831</b>	
<b>Total Liabilities, Deferred Inflows Of Resources And Fund Balances</b>				<b>\$10,471,978</b>	<b>\$8,831</b>	

LEA : 111444602     Mifflin County SD

Printed 12/14/2023 10:00:32 AM

Amounts Expressed in Whole Dollars		<u>Total Governmental</u> <u>Funds</u>
<b>Liabilities And Deferred Inflows Of Resources And Fund Balances</b>		
<b>Liabilities</b>		
0400 Due to Other Funds		1,000,000
0411 Due to Other Governments		
0412 Due to Primary Government		
0413 Due to Component Unit		
0420 Accounts Payable		1,089,755
0430 Contracts Payable		
0440 Current Portion of Long-Term Debt		
0450 Short-Term Payables		
0461 Accrued Salaries and Benefits		7,307,892
0462 Payroll Deductions and Withholding		680,845
0480 Unearned Revenues		7,773,945
0490 Other Current Liabilities		55,515
<b>Total Liabilities</b>		<b>\$17,907,952</b>
0950 Deferred Inflows of Resources		
<b>Fund Balances</b>		
0810 Nonspendable Fund Balance		32,016
0820 Restricted Fund Balance		
0830 Committed Fund Balance		302,546
0840 Assigned Fund Balance		25,628,700
0850 Unassigned Fund Balance		7,572,040
<b>Total Fund Balances</b>		<b>\$33,535,302</b>
<b>Total Liabilities, Deferred Inflows Of Resources And Fund Balances</b>		<b>\$51,443,254</b>

LEA : 111444602 Mifflin County SD

Printed 12/14/2023 10:00:47 AM

Amounts Expressed in Whole Dollars	<u>General Fund</u> <u>(10)</u>	<u>Student Sponsored</u> <u>Activity Fund</u> <u>(21)</u>	<u>Public Purpose Trust</u> <u>(27)</u>	<u>Other Compt Approved</u> <u>(28)</u>	<u>Athletic / Activity</u> <u>(29)</u>
<b>Revenues</b>					
6000 Revenue from Local Sources	38,869,307				
7000 Revenue from State Sources	45,832,320				
8000 Revenue from Federal Sources	10,888,543				
<b>Total Revenues</b>	<b>\$95,590,170</b>				
<b>Expenditures</b>					
1000 Instruction	52,471,290				
2000 Support Services	26,307,910				
3000 Operation of Non-Instructional Services	1,336,868				
4000 Facilities Acquisition, Construction and Improvement Services	462,601				
5110 Debt Service	8,294,439				
5130 Refund of Prior Year Revenues / Receipts	4,810				
5140 Leases and Other Right-to-Use Arrangements	377,826				
<b>Total Expenditures</b>	<b>\$89,255,744</b>				
<b>Excess (Deficiency) Of Revenues Over Expenditures</b>	<b>\$6,334,426</b>				
<b>Other Financing Sources (Uses)</b>					
9110 Face Value of Bonds Issued					
9120 Proceeds from Refunding of Bonds					
9130 Bond Premiums					
9200 Proceeds from Extended Term Financing, Leases, and Other Right-to-Use Arrangements	1,050,172				
9300 Interfund Transfers - IN	460,577				
9400 Sale of or Compensation for Loss of Fixed Assets					
9710 Transfers from Component Units					
9720 Transfers from Primary Governments					
9910 Other Financing Sources Not Listed in the 9000 Series					
9990 Insurance Recoveries					
5120 Debt Service – Refunded Bonds					
5150 Bond Discounts					
5200 Interfund Transfers – Out	1,000,000				
5300 Transfers Out to Component Units/Primary Governments	460,577				
<b>Total Other Financing Sources (Uses)</b>	<b>\$50,172</b>				

LEA : 111444602     Mifflin County SD

Printed 12/14/2023 10:00:47 AM

Amounts Expressed in Whole Dollars	<u>Capital Reserve (690.</u> <u>1850)</u> <u>(31)</u>	<u>Capital Reserve (1431)</u> <u>(32)</u>	<u>Other Capital Projects</u> <u>Fund</u> <u>(39)</u>	<u>Debt Service</u> <u>(40)</u>	<u>Permanent</u> <u>(90)</u>
<b>Revenues</b>					
6000 Revenue from Local Sources			249,422		
7000 Revenue from State Sources					
8000 Revenue from Federal Sources					
<b>Total Revenues</b>			<b>\$249,422</b>		
<b>Expenditures</b>					
1000 Instruction					
2000 Support Services					
3000 Operation of Non-Instructional Services					
4000 Facilities Acquisition, Construction and Improvement Services			418,145		
5110 Debt Service			204,749		
5130 Refund of Prior Year Revenues / Receipts					
5140 Leases and Other Right-to-Use Arrangements					
<b>Total Expenditures</b>			<b>\$622,894</b>		
<b>Excess (Deficiency) Of Revenues Over Expenditures</b>			<b>(\$373,472)</b>		
<b>Other Financing Sources (Uses)</b>					
9110 Face Value of Bonds Issued					
9120 Proceeds from Refunding of Bonds					
9130 Bond Premiums					
9200 Proceeds from Extended Term Financing, Leases, and Other Right-to-Use Arrangements					
9300 Interfund Transfers - IN			1,000,000		
9400 Sale of or Compensation for Loss of Fixed Assets					
9710 Transfers from Component Units					
9720 Transfers from Primary Governments					
9910 Other Financing Sources Not Listed in the 9000 Series					
9990 Insurance Recoveries					
5120 Debt Service – Refunded Bonds					
5150 Bond Discounts					
5200 Interfund Transfers – Out			460,577		
5300 Transfers Out to Component Units/Primary Governments					
<b>Total Other Financing Sources (Uses)</b>			<b>\$539,423</b>		

LEA : 111444602     Mifflin County SD

Printed 12/14/2023 10:00:47 AM

Amounts Expressed in Whole Dollars		<u>Total Governmental Funds</u>
<b>Revenues</b>		
6000	Revenue from Local Sources	39,118,729
7000	Revenue from State Sources	45,832,320
8000	Revenue from Federal Sources	10,888,543
<b>Total Revenues</b>		<b>\$95,839,592</b>
<b>Expenditures</b>		
1000	Instruction	52,471,290
2000	Support Services	26,307,910
3000	Operation of Non-Instructional Services	1,336,868
4000	Facilities Acquisition, Construction and Improvement Services	880,746
5110	Debt Service	8,499,188
5130	Refund of Prior Year Revenues / Receipts	4,810
5140	Leases and Other Right-to-Use Arrangements	377,826
<b>Total Expenditures</b>		<b>\$89,878,638</b>
<b>Excess (Deficiency) Of Revenues Over Expenditures</b>		<b>\$5,960,954</b>
<b>Other Financing Sources (Uses)</b>		
9110	Face Value of Bonds Issued	
9120	Proceeds from Refunding of Bonds	
9130	Bond Premiums	
9200	Proceeds from Extended Term Financing, Leases, and Other Right-to-Use Arrangements	1,050,172
9300	Interfund Transfers - IN	1,460,577
9400	Sale of or Compensation for Loss of Fixed Assets	
9710	Transfers from Component Units	
9720	Transfers from Primary Governments	
9910	Other Financing Sources Not Listed in the 9000 Series	
9990	Insurance Recoveries	
5120	Debt Service – Refunded Bonds	
5150	Bond Discounts	
5200	Interfund Transfers – Out	1,460,577
5300	Transfers Out to Component Units/Primary Governments	460,577
<b>Total Other Financing Sources (Uses)</b>		<b>\$589,595</b>

Amounts Expressed in Whole Dollars	<u>General Fund</u> <u>(10)</u>	<u>Student Sponsored</u> <u>Activity Fund</u> <u>(21)</u>	<u>Public Purpose Trust</u> <u>(27)</u>	<u>Other Compt Approved</u> <u>(28)</u>	<u>Athletic / Activity</u> <u>(29)</u>
<b>Special And Extraordinary Items</b>					
9920 Special Items – Gains					
9930 Extraordinary Items – Gains					
5520 Special Items – Losses					
5530 Extraordinary Items – Losses					
<b>Net Change In Fund Balances</b>	<b>\$6,384,598</b>				
<b>Fund Balance</b>					
0001 Fund Balance - Beginning of Fiscal Year	19,738,144				
<b>Fund Balance - End Of Year</b>	<b>\$26,122,742</b>				

Amounts Expressed in Whole Dollars		<u>Capital Reserve (690.</u>	<u>Capital Reserve (1431)</u>	<u>Other Capital Projects</u>	<u>Debt Service</u>	<u>Permanent</u>
		<u>1850)</u>	<u>(32)</u>	<u>Fund</u>	<u>(40)</u>	<u>(90)</u>
		<u>(31)</u>		<u>(39)</u>		
<b>Special And Extraordinary Items</b>						
9920	Special Items – Gains					
9930	Extraordinary Items – Gains					
5520	Special Items – Losses					
5530	Extraordinary Items – Losses					
<b>Net Change In Fund Balances</b>				<b>\$165,951</b>		
<b>Fund Balance</b>						
0001	Fund Balance - Beginning of Fiscal Year			7,237,776	8,831	
<b>Fund Balance - End Of Year</b>				<b>\$7,403,727</b>	<b>\$8,831</b>	



Amounts Expressed in Whole Dollars		<u>Total Governmental</u> <u>Funds</u>
<b>Special And Extraordinary Items</b>		
9920	Special Items – Gains	
9930	Extraordinary Items – Gains	
5520	Special Items – Losses	
5530	Extraordinary Items – Losses	
<b>Net Change In Fund Balances</b>		<b>\$6,550,549</b>
<b>Fund Balance</b>		
0001	Fund Balance - Beginning of Fiscal Year	26,984,751
<b>Fund Balance - End Of Year</b>		<b>\$33,535,300</b>

LEA : 111444602 Mifflin County SD

Printed 12/14/2023 10:00:49 AM

Amounts Expressed in Whole Dollars	<u>Food Service</u> (51)	<u>Child Care</u> <u>Operations</u> (52)	<u>Other Enterprise</u> (58)	<u>TOTAL</u>	<u>Internal Service</u> (60)
<b>Assets And Deferred Outflows Of Resources</b>					
<b>Current Assets</b>					
0100 Cash and Cash Equivalents	333,851			333,851	
0110 Investments					
0130 Due From Other Funds					
0141 Due From Other Governments					
0142 State Revenue Receivable	2,743			2,743	
0143 Federal Revenue Receivable	36,914			36,914	
0146 Due from Primary Government					
0147 Due from Component Unit					
0150 Other Receivables	8,730			8,730	
0170 Inventories	33,405			33,405	
0180 Prepaid Expenses (Expenditures)	109			109	
0190 Other Current Assets					
<b>Total Current Assets</b>	<b>\$415,752</b>			<b>\$415,752</b>	
<b>Noncurrent Assets</b>					
0211 Land					
0212 Site Improvements (Net)					
0220 Buildings and Building Improvements (Net)					
0230 Tangible Property and Intangible Right-To-Use Assets (Net)					
0250 Construction in Progress					
0260 Long Term Prepayments					
0290 Other Noncurrent Assets					
<b>Total Noncurrent Assets</b>					
0910 Deferred Outflows of Resources	126,929			126,929	
<b>Total Assets And Deferred Outflows Of Resources</b>	<b>\$542,681</b>			<b>\$542,681</b>	

LEA : 111444602     Mifflin County SD

Printed 12/14/2023 10:00:49 AM

Amounts Expressed in Whole Dollars	<u>Food Service</u> <u>(51)</u>	<u>Child Care</u> <u>Operations</u> <u>(52)</u>	<u>Other Enterprise</u> <u>(58)</u>	<u>TOTAL</u>	<u>Internal Service</u> <u>(60)</u>
<b>Liabilities And Deferred Inflows Of Resources And Net Position</b>					
<b>Current Liabilities</b>					
0400 Due to Other Funds	262,961			262,961	
0411 Due to Other Governments					
0413 Due to Component Unit					
0420 Accounts Payable	2,825			2,825	
0430 Contracts Payable					
0440 Current Portion of Long-Term Debt					
0450 Short-Term Payables					
0461 Accrued Salaries and Benefits	1,570			1,570	
0462 Payroll Deductions and Withholding					
0480 Unearned Revenues					
0490 Other Current Liabilities	39,339			39,339	
<b>Total Current Liabilities</b>	<b>\$306,695</b>			<b>\$306,695</b>	
<b>Noncurrent Liabilities</b>					
0510 Bonds Payable					
0520 Extended-Term Financing Agreements Payable					
0530 Lease and Other Right-To-Use Obligations					
0540 Accumulated Compensated Absences	55,132			55,132	
0550 Authority Lease Obligations					
0560 Other Post-Employment Benefits (OPEB)	143,655			143,655	
0570 Net Pension Liability	2,360,496			2,360,496	
0599 Other Noncurrent Liabilities					
<b>Total Noncurrent Liabilities</b>	<b>\$2,559,283</b>			<b>\$2,559,283</b>	
<b>Total Liabilities</b>	<b>\$2,865,978</b>			<b>\$2,865,978</b>	
0950 Deferred Inflows of Resources	137,089			137,089	
<b>Net Position</b>					
0791 Net Investment in Capital Assets					
0008 Restricted Net Position (0792 – 0798)					
0799 Unrestricted Net Position	(2,460,386)			(2,460,386)	
<b>Total Net Position</b>	<b>(\$2,460,386)</b>			<b>(\$2,460,386)</b>	
<b>Total Liabilities And Deferred Inflows Of Resources And Net Position</b>	<b>\$542,681</b>			<b>\$542,681</b>	

Amounts Expressed in Whole Dollars	Food Service (51)	Child Care Operations (52)	Other Enterprise (58)	TOTAL	Internal Service (60)
<b>Operating Revenues</b>					
6600 Food Service Revenue	630,845			630,845	
0071 Charges for Services	47,955			47,955	
0072 Other Operating Revenue					
<b>Total Operating Revenues</b>	<b>\$678,800</b>			<b>\$678,800</b>	
<b>Operating Expenses</b>					
100 Personnel Services – Salaries	1,019,655			1,019,655	
200 Personnel Services – Employee Benefits	530,178			530,178	
300 Purchased Professional and Technical Services	152			152	
400 Purchased Property Services	36,633			36,633	
500 Other Purchased Services	167,262			167,262	
600 Supplies	1,626,498			1,626,498	
740 Depreciation					
770 Amortization Expense					
810 Dues and Fees					
880 Refunds of Prior Years' Receipts					
890 Miscellaneous Expenditures	3,622			3,622	
<b>Total Operating Expenses</b>	<b>\$3,384,000</b>			<b>\$3,384,000</b>	
<b>Operating Income (Loss)</b>	<b>(\$2,705,200)</b>			<b>(\$2,705,200)</b>	
<b>Non Operating Revenues (Expenses)</b>					
6500 Earnings on Investments	14,192			14,192	
6830 Federal Revenue from Intermediary Sources					
6920 Contributions and Donations from Private Sources	4,331			4,331	
6930 Gains or Losses on Sale of Fixed Assets					
6991 Refunds of a Prior Year Expenditure					
7000 Revenue from State Sources	374,114			374,114	
8000 Revenue from Federal Sources	2,710,873			2,710,873	
9990 Insurance Recoveries					
820 Claims and Judgments Against the LEA					
830 Interest					
<b>TOTAL Non Operating Revenues (Expenses)</b>	<b>\$3,103,510</b>			<b>\$3,103,510</b>	
<b>Income (Loss) Before Contributions And Transfers</b>	<b>\$398,310</b>			<b>\$398,310</b>	

Amounts Expressed in Whole Dollars	<u>Food Service</u> <u>(51)</u>	<u>Child Care Operations</u> <u>(52)</u>	<u>Other Enterprise</u> <u>(58)</u>	<u>TOTAL</u>	<u>Internal Service</u> <u>(60)</u>
<b>Contributions, Transfers, and Special and Extraordinary Items</b>					
5200 Interfund Transfers – Out					
5300 Transfers Out to Component Units/Primary Governments					
5520 Special Items – Losses					
5530 Extraordinary Items – Losses					
9300 Interfund Transfers - IN					
9500 Capital Contributions					
9700 Transfers IN From Component Units/Primary Governments					
9920 Special Items – Gains					
9930 Extraordinary Items – Gains					
<b>Change In Net Position</b>	<b>\$398,310</b>			<b>\$398,310</b>	
0002 Net Position - Beginning of Fiscal Year	(2,858,698)			(2,858,698)	
0003 Accounting Changes / Residual Equity Transfers					
<b>Net Position - End Of Year</b>	<b>(\$2,460,388)</b>			<b>(\$2,460,388)</b>	

LEA : 111444602      Mifflin County SD

Printed 12/14/2023 10:01:03 AM

Amounts Expressed in Whole Dollars	<u>Food Service</u> <u>(51)</u>	<u>Child Care Operations</u> <u>(52)</u>	<u>Other Enterprise</u> <u>(58)</u>	<u>TOTAL</u>	<u>Internal Service(60)</u>
<b>Cash Flows From Operating Activities</b>					
0011 Cash Receipts From Users	597,480			597,480	
0012 Cash Receipts From Assessments Made to Other Funds					
0013 Cash Receipts From Earnings on Investments					
0014 Cash Receipts From Other Operating Revenue					
0015 Cash Payments To Employees For Services	1,816,303			1,816,303	
0016 Cash Payments For Insurance Claims					
0017 Cash Payments To Suppliers For Goods and Services	1,623,569			1,623,569	
0018 Cash Payments For Other Operating Expenses					
<b>Net Cash Provided By (Used For) Operating Activities</b>	<b>(\$2,842,392)</b>			<b>(\$2,842,392)</b>	
<b>Cash Flows From Non-Capital Financing Activities</b>					
0021 Receipts From Local Sources - 6000	4,331			4,331	
0022 Receipts From State Sources - 7000	371,372			371,372	
0023 Receipts From Federal Sources -8000	2,468,837			2,468,837	
0024 Notes and Loans Received (Repaid)					
0025 Interest Paid on Notes/Loans - 5100-830					
0026 Operating Transfers In (Out)/Residual Equity Trans					
0027 Operating Transfers In (Out) Primary Government / Comp Unit					
0028 Receipts From Refund of Prior Year Expenditures - 6991					
0029 Special and Extraordinary Gains (losses)					
0030 Receipts from Insurance Recoveries -9990					
<b>Net Cash Prov By (Used for) Non-Capital Financing Activities</b>	<b>\$2,844,540</b>			<b>\$2,844,540</b>	
<b>Cash Flows From Capital and Related Financing Activities</b>					
0031 Payments For Fac Acq, Const, and Imp - 4000					
0032 Gain / (Loss) on Sale of Fixed Assets - 6930					
0033 Proceeds From Extended Term Financing - 9200					
0034 Principal Paid on Financing Agreements					
0035 Interest Paid on Financing Agreements - 5100-830					
0036 (Inc) Dec in Contributed Capital					
<b>Net Cash Prov By (Used for) Capital and Related Financing Activities</b>					
<b>Cash Flows From Investing Activities</b>					
0041 Earnings on Investments - 6500	14,192			14,192	
0042 Purchase of Inv Securities / Deposits to Inv Pools					
0043 Receipts From Investment Pool Withdrawals					
0044 Proceeds from Sale and Maturity of Inv Securities					

LEA : 111444602      Mifflin County SD

Printed 12/14/2023 10:01:03 AM

0045   Loans Received (Paid)

Net Cash Prov By (Used for) Investing Activities	\$14,192	\$14,192
--	----------	----------

LEA : 111444602     Mifflin County SD

Printed 12/14/2023 10:01:03 AM

	<u>Food Service</u> <u>(51)</u>	<u>Child Care Operations</u> <u>(52)</u>	<u>Other Enterprise</u> <u>(58)</u>	<u>TOTAL</u>	<u>Internal Service</u> <u>(60)</u>
<b>Net Increase (Decrease) in Cash Flows</b>	<b>16,340</b>			<b>16,340</b>	
0004 Cash and Cash Equivalents Beginning of Year	317,512			317,512	
<b>Cash and Cash Equivalents at Year End</b>	<b>\$333,852</b>			<b>\$333,852</b>	
<hr/>					
<b>Reconciliation of Operating Income (Loss) To Net Cash Provided by (Used For) Operating Activities</b>					
0005 Operating Income (Loss) per REP	(2,705,200)			(2,705,200)	
<b>Adjustments</b>					
0051 Depreciation and Net Amortization					
0052 Provision for Uncollectible Accounts					
0053 Other Adjustments	210,703			210,703	
<b>Effect of Changes in Assets, Liabilities, Deferred Outflows and Deferred Inflows</b>					
0054 (Inc) Dec In Accounts Receivable (0120-0150)	2,380			2,380	
0055 Advances to Other Funds	(138,335)			(138,335)	
0056 (Inc) Dec in Inventories (0170)	1,387			1,387	
0057 (Inc) Dec in Prepaid Expenses (0180)	(109)			(109)	
0058 (Inc) Dec in Other Current or Noncurrent Assets					
0064 Deferred Outflows (0910)	11,894			11,894	
0059 Inc (Dec) in Accounts Payable (0400-0450)	868			868	
0060 Inc (Dec) in Accrued Salaries/Benefits (0461)	(2,699)			(2,699)	
0065 Inc (Dec) in Net Pension Liabilities (0570)	178,315			178,315	
0066 Inc (Dec) in Other Postemp Benefit Oblig (0560)	(52,618)			(52,618)	
0061 Inc (Dec) in Payroll Deductions/Withholding (0462)					
0062 Inc (Dec) in Unearned Revenue (0480)	(69,129)			(69,129)	
0063 Inc (Dec) in Other Current or Noncurrent Liabilities	(5,726)			(5,726)	
0067 Deferred Inflows (0950)	(274,124)			(274,124)	
<b>Total Adjustments</b>	<b>(\$137,193)</b>			<b>(\$137,193)</b>	
<b>Cash Provided By (Used for) Total</b>	<b>(\$2,842,393)</b>			<b>(\$2,842,393)</b>	



COMBINED STATEMENT OF CASH FLOWS  
SCHEDULE OF NONCASH INVESTING, CAPITAL, AND FINANCING ACTIVITIES

Explanation of Transaction and Balance Sheet Effect	Amount
Total	

LEA : 111444602     Mifflin County SD

Printed 12/14/2023 10:01:04 AM

Amounts Expressed in Whole Dollars	<u>Private Purpose Trust</u> <u>(71)</u>	<u>Investment Trust</u> <u>(72)</u>	<u>Pension Trust</u> <u>(73)</u>	<u>Student Activity Custodial</u> <u>(81)</u>
<b>Assets And Deferred Outflows Of Resources</b>				
<b>Assets</b>				
0100 Cash and Cash Equivalents	3,985			245,378
0110 Investments				
0130 Due From Other Funds				
0140 Due from Other Governments, Primary Government and Component Units				
0150 Other Receivables				
0170 Inventories				
0180 Prepaid Expenses (Expenditures)				
0190 Other Current Assets				
0220 Buildings and Building Improvements (Net)				
0230 Tangible Property and Intangible Right-To-Use Assets (Net)				
<b>Total Assets</b>	<b>\$3,985</b>			<b>\$245,378</b>
0910 Deferred Outflows of Resources				
<b>Total Assets And Deferred Outflows Of Resources</b>	<b>\$3,985</b>			<b>\$245,378</b>

LEA : 111444602     Mifflin County SD

Printed 12/14/2023 10:01:04 AM

Amounts Expressed in Whole Dollars		<u>Other Custodial</u> <u>(89)</u>	<u>Fiduciary Component Units</u> <u>(98)</u>	<u>Total Fiduciary Funds</u>
<b>Assets And Deferred Outflows Of Resources</b>				
<b>Assets</b>				
0100	Cash and Cash Equivalents			249,363
0110	Investments			
0130	Due From Other Funds			
0140	Due from Other Governments, Primary Government and Component Units			
0150	Other Receivables			
0170	Inventories			
0180	Prepaid Expenses (Expenditures)			
0190	Other Current Assets			
0220	Buildings and Building Improvements (Net)			
0230	Tangible Property and Intangible Right-To-Use Assets (Net)			
<b>Total Assets</b>				<b>\$249,363</b>
0910	Deferred Outflows of Resources			
<b>Total Assets And Deferred Outflows Of Resources</b>				<b>\$249,363</b>

LEA : 111444602     Mifflin County SD

Printed 12/14/2023 10:01:04 AM

Amounts Expressed in Whole Dollars	<u>Private Purpose Trust</u> <u>(71)</u>	<u>Investment Trust</u> <u>(72)</u>	<u>Pension Trust</u> <u>(73)</u>	<u>Student Activity Custodial</u> <u>(81)</u>
<b>Liabilities, Deferred Inflows Of Resources And Net Position</b>				
<b>Liabilities</b>				
0400 Due to Other Funds				3,352
0410 Due to Other Governments, Primary Government and Component Units				
0420 Accounts Payable				19,174
0430 Contracts Payable				
0450 Short-Term Payables				
0460 Payroll Accruals and Withholdings				
0480 Unearned Revenues				
0490 Other Current Liabilities				
<b>Total Liabilities</b>				<b>\$22,526</b>
0950 Deferred Inflows of Resources				
<b>Net Position</b>				
0791 Net Investment in Capital Assets				
0009 Restricted Net Position (0792 – 0798)	3,985			222,852
0799 Unrestricted Net Position				
<b>Total Net Position</b>	<b>\$3,985</b>			<b>\$222,852</b>
<b>Total Liabilities, Deferred Inflows Of Resources And Net Position</b>	<b>\$3,985</b>			<b>\$245,378</b>

LEA : 111444602     Mifflin County SD

Printed 12/14/2023 10:01:04 AM

Amounts Expressed in Whole Dollars	<u>Other Custodial</u> <u>(89)</u>	<u>Fiduciary Component Units</u> <u>(98)</u>	<u>Total Fiduciary Funds</u>
<b>Liabilities, Deferred Inflows Of Resources And Net Position</b>			
<b>Liabilities</b>			
0400 Due to Other Funds			3,352
0410 Due to Other Governments, Primary Government and Component Units			
0420 Accounts Payable			19,174
0430 Contracts Payable			
0450 Short-Term Payables			
0460 Payroll Accruals and Withholdings			
0480 Unearned Revenues			
0490 Other Current Liabilities			
<b>Total Liabilities</b>			<b>\$22,526</b>
0950 Deferred Inflows of Resources			
<b>Net Position</b>			
0791 Net Investment in Capital Assets			
0009 Restricted Net Position (0792 – 0798)			226,837
0799 Unrestricted Net Position			
<b>Total Net Position</b>			<b>\$226,837</b>
<b>Total Liabilities, Deferred Inflows Of Resources And Net Position</b>			<b>\$249,363</b>

LEA : 111444602     Mifflin County SD

Printed 12/14/2023 10:01:07 AM

Amounts Expressed in Whole Dollars	<u>Private Purpose Trust</u> <u>(71)</u>	<u>Investment Trust</u> <u>(72)</u>	<u>Pension Trust</u> <u>(73)</u>	<u>Student Activity</u> <u>Custodial</u> <u>(81)</u>	<u>Other Custodial</u> <u>(89)</u>	<u>Fiduciary Component</u> <u>Units</u> <u>(98)</u>
<b>Additions</b>						
0091 Gifts and Contributions	27,500			16,863		
0095 Net Investment Earnings	22			130		
0092 Other Additions				453,637		
<b>Deductions</b>						
0093 Scholarships Awarded	70,700					
0094 Other Deductions				484,626		
<b>Change In Net Position</b>	<b>(\$43,178)</b>			<b>(\$13,996)</b>		
0006 Net Position – Beginning of Fiscal Year	47,163			236,848		
0007 Net Position Held in Trust for Pension Benefits						
<b>Net Position - End of Fiscal Year</b>	<b>\$3,985</b>			<b>\$222,852</b>		

LEA : 111444602     Mifflin County SD

Printed 12/14/2023 10:01:07 AM

Amounts Expressed in Whole Dollars	<u>Total Fiduciary Funds</u>
<b>Additions</b>	
0091 Gifts and Contributions	44,363
0095 Net Investment Earnings	152
0092 Other Additions	453,637
<b>Deductions</b>	
0093 Scholarships Awarded	70,700
0094 Other Deductions	484,626
<b>Change In Net Position</b>	<b>(\$57,174)</b>
0006 Net Position – Beginning of Fiscal Year	284,011
0007 Net Position Held in Trust for Pension Benefits	
<b>Net Position - End of Fiscal Year</b>	<b>\$226,837</b>

	Revenue Reported In Current Year	Current Year Tax Accrual	Prior Year Tax Accrual	Taxes Collected In Current Year
<b><u>Revenue from Local Sources</u></b>				
6111 Current Real Estate Taxes	25,652,356.25			25,652,356.25
6112 Interim Real Estate Taxes	36,313.66			36,313.66
6113 Public Utility Realty Taxes	34,097.25			34,097.25
6114 Payments in Lieu of Current Taxes - State / Local	134,789.76			134,789.76
6120 Current Per Capita Taxes, Section 679	101,643.00			101,643.00
6141 Current Act 511 Per Capita Taxes	101,621.00			101,621.00
6143 Current Act 511 Local Services Taxes	81,196.05			81,196.05
6151 Current Act 511 Earned Income Taxes	8,366,795.68			8,366,795.68
6153 Current Act 511 Real Estate Transfer Taxes	672,904.94			672,904.94
6411 Delinquent Real Estate Taxes	1,473,248.68			1,473,248.68
6420 Delinquent Per Capita Taxes, Section 679	17,348.98			17,348.98
6440 Delinquent Local Enabling Taxes - Flat Rate Assessments	17,390.15			17,390.15
6500 Earnings on Investments	1,026,570.61			
6700 Revenues from LEA Activities	61,538.00			
6832 Federal IDEA Revenue Received as Pass Through	827,983.70			
6910 Rentals	7,781.66			
6920 Contributions and Donations from Private Sources	5,816.96			
6942 Summer School Tuition	10,050.00			
6944 Receipts from Other LEAs in Pennsylvania - Education	22,949.58			
6961 Transportation Services Provided Other Pennsylvania LEAs	17,157.31			
6962 Other Services Provided Other Pennsylvania LEAs	28,229.00			
6969 All Other Services Provided Other Governments	30,292.82			
6999 Other Revenues Not Specified Above	141,231.74			
<b>TOTAL Revenue from Local Sources</b>	<b>\$38,869,306.78</b>			<b>\$36,689,705.40</b>



	Revenue Reported In Current Year
<b><u>Revenue from State Sources</u></b>	
7111 Basic Education Funding-Formula	23,625,259.51
7112 Basic Education Funding-Social Security	1,292,120.40
7120 Level Up Supplement	1,102,471.19
7160 Tuition for Orphans Subsidy	111,723.79
7271 Special Education funds for School-Aged Pupils	4,019,417.47
7311 Pupil Transportation Subsidy	3,347,770.01
7312 Nonpublic and Charter School Pupil Transportation Subsidy	171,325.00
7320 Rental and Sinking Fund Payments / Building Reimbursement Subsidy	1,229,436.38
7330 Health Services (Medical, Dental, Nurse, Act 25)	92,724.92
7340 State Property Tax Reduction Allocation	2,422,548.40
7361 School Safety and Security Grants	269,453.20
7362 School Mental Health & Safety and Security Grants	82,591.47
7505 Ready to Learn Block Grant	968,914.00
7820 State Share of Retirement Contributions	7,096,564.50
<b>TOTAL Revenue from State Sources</b>	<b>\$45,832,320.24</b>

	Revenue Reported In Current Year
<b><u>Revenue from Federal Sources</u></b>	
8514 Title I - Improving the Academic Achievement of the Disadvantaged	2,398,283.10
8515 Title II - Preparing, Training, and Recruiting High Quality Teachers and Principals	319,634.86
8516 Title III - Language Instruction for English Learners and Immigrant Students	11,202.21
8517 Title IV - 21st Century Schools	162,699.98
8519 Title V - Flexibility and Accountability	39,018.00
8741 Elementary and Secondary School Emergency Relief Fund (ESSER)	39,522.92
8743 ESSER II - Elementary and Secondary School Emergency Relief Fund	2,282,671.58
8744 ARP ESSER - Elementary and Secondary School Emergency Relief Fund	4,821,885.16
8751 ARP ESSER Learning Loss	307,320.28
8752 ARP ESSER Summer Programs	161,415.78
8753 ARP ESSER Afterschool Programs	189,401.00
8754 ARP ESSER Homeless Children and Youth Funds	23,876.88
8810 School-Based Access Medicaid Reimbursement Program (SBAP) Reimbursements (Access)	103,550.79
8820 Medical Assistance Reimbursement for Administrative Claiming (Quarterly) Program	28,060.63
<b>TOTAL Revenue from Federal Sources</b>	<b>\$10,888,543.17</b>

	Revenue Reported In Current Year	
<b><u>Other Financing Sources</u></b>		
9220 Leases and Other Right-to-Use Arrangements	1,050,171.79	
9330 Capital Projects Fund Transfers	460,576.68	
<b>TOTAL Other Financing Sources</b>	<b>\$1,510,748.47</b>	
<b>TOTAL FROM ALL SOURCES</b>	<b>\$97,100,918.66</b>	<b>\$36,689,705.40</b>

LEA : 111444602 Mifflin County SD

Printed 12/14/2023 10:01:12 AM

	<u>General Fund (10)</u>	<u>Student Sponsored Activity Fund (21)</u>	<u>Public Purpose Trust (27)</u>	<u>Other Compt Approved (28)</u>	<u>Athletic / Activity (29)</u>	<u>Capital Reserve (690, 1850) (31)</u>
<b>6000 Revenue from Local Sources</b>						
6111 Current Real Estate Taxes	25,652,356.25					
6112 Interim Real Estate Taxes	36,313.66					
6113 Public Utility Realty Taxes	34,097.25					
6114 Payments in Lieu of Current Taxes - State / Local	134,789.76					
6120 Current Per Capita Taxes, Section 679	101,643.00					
6141 Current Act 511 Per Capita Taxes	101,621.00					
6143 Current Act 511 Local Services Taxes	81,196.05					
6151 Current Act 511 Earned Income Taxes	8,366,795.68					
6153 Current Act 511 Real Estate Transfer Taxes	672,904.94					
6411 Delinquent Real Estate Taxes	1,473,248.68					
6420 Delinquent Per Capita Taxes, Section 679	17,348.98					
6440 Delinquent Local Enabling Taxes - Flat Rate Assessments	17,390.15					
6500 Earnings on Investments	1,026,570.61					
6700 Revenues from LEA Activities	61,538.00					
6832 Federal IDEA Revenue Received as Pass Through	827,983.70					
6910 Rentals	7,781.66					
6920 Contributions and Donations from Private Sources	5,816.96					
6942 Summer School Tuition	10,050.00					
6944 Receipts from Other LEAs in Pennsylvania - Education	22,949.58					
6961 Transportation Services Provided Other Pennsylvania LEAs	17,157.31					
6962 Other Services Provided Other Pennsylvania LEAs	28,229.00					
6969 All Other Services Provided Other Governments	30,292.82					
6999 Other Revenues Not Specified Above	141,231.74					
<b>6000 Total Revenue from Local Sources</b>	<b>\$38,869,306.78</b>					
<b>7000 Revenue from State Sources</b>						
7111 Basic Education Funding-Formula	23,625,259.51					
7112 Basic Education Funding-Social Security	1,292,120.40					
7120 Level Up Supplement	1,102,471.19					
7160 Tuition for Orphans Subsidy	111,723.79					
7271 Special Education funds for School-Aged Pupils	4,019,417.47					
7311 Pupil Transportation Subsidy	3,347,770.01					
7312 Nonpublic and Charter School Pupil Transportation Subsidy	171,325.00					
7320 Rental and Sinking Fund Payments / Building Reimbursement Subsidy	1,229,436.38					
7330 Health Services (Medical, Dental, Nurse, Act 25)	92,724.92					
7340 State Property Tax Reduction Allocation	2,422,548.40					

LEA : 111444602 Mifflin County SD

Printed 12/14/2023 10:01:12 AM

	<u>Capital Reserve</u> <u>(1431) (32)</u>	<u>Other Capital</u> <u>Projects Fund (39)</u>	<u>Debt Service (40)</u>	<u>Permanent (90)</u>	<u>Total</u>
<b>6000 Revenue from Local Sources</b>					
6111 Current Real Estate Taxes					25,652,356.25
6112 Interim Real Estate Taxes					36,313.66
6113 Public Utility Realty Taxes					34,097.25
6114 Payments in Lieu of Current Taxes - State / Local					134,789.76
6120 Current Per Capita Taxes, Section 679					101,643.00
6141 Current Act 511 Per Capita Taxes					101,621.00
6143 Current Act 511 Local Services Taxes					81,196.05
6151 Current Act 511 Earned Income Taxes					8,366,795.68
6153 Current Act 511 Real Estate Transfer Taxes					672,904.94
6411 Delinquent Real Estate Taxes					1,473,248.68
6420 Delinquent Per Capita Taxes, Section 679					17,348.98
6440 Delinquent Local Enabling Taxes - Flat Rate Assessments					17,390.15
6500 Earnings on Investments		249,422.18			1,275,992.79
6700 Revenues from LEA Activities					61,538.00
6832 Federal IDEA Revenue Received as Pass Through					827,983.70
6910 Rentals					7,781.66
6920 Contributions and Donations from Private Sources					5,816.96
6942 Summer School Tuition					10,050.00
6944 Receipts from Other LEAs in Pennsylvania - Education					22,949.58
6961 Transportation Services Provided Other Pennsylvania LEAs					17,157.31
6962 Other Services Provided Other Pennsylvania LEAs					28,229.00
6969 All Other Services Provided Other Governments					30,292.82
6999 Other Revenues Not Specified Above					141,231.74
<b>6000 Total Revenue from Local Sources</b>		<b>\$249,422.18</b>			<b>\$39,118,728.96</b>
<b>7000 Revenue from State Sources</b>					
7111 Basic Education Funding-Formula					23,625,259.51
7112 Basic Education Funding-Social Security					1,292,120.40
7120 Level Up Supplement					1,102,471.19
7160 Tuition for Orphans Subsidy					111,723.79
7271 Special Education funds for School-Aged Pupils					4,019,417.47
7311 Pupil Transportation Subsidy					3,347,770.01
7312 Nonpublic and Charter School Pupil Transportation Subsidy					171,325.00
7320 Rental and Sinking Fund Payments / Building Reimbursement Subsidy					1,229,436.38
7330 Health Services (Medical, Dental, Nurse, Act 25)					92,724.92
7340 State Property Tax Reduction Allocation					2,422,548.40

LEA : 111444602 Mifflin County SD

Printed 12/14/2023 10:01:12 AM

	<u>General Fund (10)</u>	<u>Student Sponsored Activity Fund (21)</u>	<u>Public Purpose Trust (27)</u>	<u>Other Compt Approved (28)</u>	<u>Athletic / Activity (29)</u>	<u>Capital Reserve (690, 1850) (31)</u>
<b>7000 Revenue from State Sources</b>						
7361 School Safety and Security Grants	269,453.20					
7362 School Mental Health & Safety and Security Grants	82,591.47					
7505 Ready to Learn Block Grant	968,914.00					
7820 State Share of Retirement Contributions	7,096,564.50					
<b>7000 Total Revenue from State Sources</b>	<b>\$45,832,320.24</b>					
<b>8000 Revenue from Federal Sources</b>						
8514 Title I - Improving the Academic Achievement of the Disadvantaged	2,398,283.10					
8515 Title II - Preparing, Training, and Recruiting High Quality Teachers and Principals	319,634.86					
8516 Title III - Language Instruction for English Learners and Immigrant Students	11,202.21					
8517 Title IV - 21st Century Schools	162,699.98					
8519 Title V - Flexibility and Accountability	39,018.00					
8741 Elementary and Secondary School Emergency Relief Fund (ESSER)	39,522.92					
8743 ESSER II - Elementary and Secondary School Emergency Relief Fund	2,282,671.58					
8744 ARP ESSER - Elementary and Secondary School Emergency Relief Fund	4,821,885.16					
8751 ARP ESSER Learning Loss	307,320.28					
8752 ARP ESSER Summer Programs	161,415.78					
8753 ARP ESSER Afterschool Programs	189,401.00					
8754 ARP ESSER Homeless Children and Youth Funds	23,876.88					
8810 School-Based Access Medicaid Reimbursement Program (SBAP) Reimbursements (Access)	103,550.79					
8820 Medical Assistance Reimbursement for Administrative Claiming (Quarterly) Program	28,060.63					
<b>8000 Total Revenue from Federal Sources</b>	<b>\$10,888,543.17</b>					
<b>9000 Other Financing Sources</b>						
9220 Leases and Other Right-to-Use Arrangements	1,050,171.79					
9310 General Fund Transfers						
9330 Capital Projects Fund Transfers	460,576.68					
<b>9000 Total Other Financing Sources</b>	<b>\$1,510,748.47</b>					
<b>Total From All Sources</b>	<b>\$97,100,918.66</b>					

LEA : 111444602     Mifflin County SD

Printed 12/14/2023 10:01:12 AM

	<u>Capital Reserve</u> <u>(1431) (32)</u>	<u>Other Capital</u> <u>Projects Fund (39)</u>	<u>Debt Service (40)</u>	<u>Permanent (90)</u>	<u>Total</u>
<b>7000 Revenue from State Sources</b>					
7361 School Safety and Security Grants					269,453.20
7362 School Mental Health & Safety and Security Grants					82,591.47
7505 Ready to Learn Block Grant					968,914.00
7820 State Share of Retirement Contributions					7,096,564.50
<b>7000 Total Revenue from State Sources</b>					<b>\$45,832,320.24</b>
<b>8000 Revenue from Federal Sources</b>					
8514 Title I - Improving the Academic Achievement of the Disadvantaged					2,398,283.10
8515 Title II - Preparing, Training, and Recruiting High Quality Teachers and Principals					319,634.86
8516 Title III - Language Instruction for English Learners and Immigrant Students					11,202.21
8517 Title IV - 21st Century Schools					162,699.98
8519 Title V - Flexibility and Accountability					39,018.00
8741 Elementary and Secondary School Emergency Relief Fund (ESSER)					39,522.92
8743 ESSER II - Elementary and Secondary School Emergency Relief Fund					2,282,671.58
8744 ARP ESSER - Elementary and Secondary School Emergency Relief Fund					4,821,885.16
8751 ARP ESSER Learning Loss					307,320.28
8752 ARP ESSER Summer Programs					161,415.78
8753 ARP ESSER Afterschool Programs					189,401.00
8754 ARP ESSER Homeless Children and Youth Funds					23,876.88
8810 School-Based Access Medicaid Reimbursement Program (SBAP) Reimbursements (Access)					103,550.79
8820 Medical Assistance Reimbursement for Administrative Claiming (Quarterly) Program					28,060.63
<b>8000 Total Revenue from Federal Sources</b>					<b>\$10,888,543.17</b>
<b>9000 Other Financing Sources</b>					
9220 Leases and Other Right-to-Use Arrangements					1,050,171.79
9310 General Fund Transfers		1,000,000.00			1,000,000.00
9330 Capital Projects Fund Transfers					460,576.68
<b>9000 Total Other Financing Sources</b>		<b>\$1,000,000.00</b>			<b>\$2,510,748.47</b>
<b>Total From All Sources</b>		<b>\$1,249,422.18</b>			<b>\$98,350,340.84</b>

LEA : 111444602     Mifflin County SD

Printed 12/14/2023 10:01:15 AM

	<u>General Fund (10)</u>	<u>Student Sponsored Activity Fund (21)</u>	<u>Public Purpose Trust (27)</u>	<u>Other Compt Approved (28)</u>	<u>Athletic / Activity (29)</u>	<u>Capital Reserve (690. 1850) (31)</u>
Revenue from Local Sources	38,869,306.78					
Revenue from State Sources	45,832,320.24					
Revenue from Federal Sources	10,888,543.17					
Other Financing Sources	1,510,748.47					
Total From All Sources	\$97,100,918.66					



LEA : 111444602    Mifflin County SD

Printed 12/14/2023 10:01:15 AM

	<u>Capital Reserve (1431)</u> <u>(32)</u>	<u>Other Capital Projects</u> <u>Fund (39)</u>	<u>Debt Service (40)</u>	<u>Permanent (90)</u>	<u>Total</u>
Revenue from Local Sources		249,422.18			39,118,728.96
Revenue from State Sources					45,832,320.24
Revenue from Federal Sources					10,888,543.17
Other Financing Sources		1,000,000.00			2,510,748.47
Total From All Sources		\$1,249,422.18			\$98,350,340.84

LEA : 111444602     Mifflin County SD

Printed 12/14/2023 10:01:20 AM

General Fund (10)

1000 Instruction	Total
100 <u>Personnel Services – Salaries</u>	
100 Personnel Services – Salaries	23,360,631.03
<b>Total Personnel Services – Salaries</b>	<b>\$23,360,631.03</b>
200 <u>Personnel Services – Employee Benefits</u>	
210 Group Insurance – Contracted Provider	6,979,243.22
220 Social Security Contributions	1,753,253.36
230 PSERS Retirement Contributions	8,243,691.06
250 Unemployment Compensation	18,553.28
260 Workers' Compensation	62,777.95
291 Other Retirement Plans	178,646.82
<b>Total Personnel Services – Employee Benefits</b>	<b>\$17,236,165.69</b>
300 <u>Purchased Professional and Technical Services</u>	
322 Professional Educational Services – Ius	33,914.77
323 Professional Educational Services – Other Educational Agencies	299,076.26
329 Professional Educational Services – Other	904,895.45
330 Other Professional Services	1,610.00
<b>Total Purchased Professional and Technical Services</b>	<b>\$1,239,496.48</b>
400 <u>Purchased Property Services</u>	
430 Repairs and Maintenance Services	57,975.85
440 Rentals	4,313.73
<b>Total Purchased Property Services</b>	<b>\$62,289.58</b>
500 <u>Other Purchased Services</u>	
510 Student Transportation Services	123,430.17
530 Communications	73,933.33
550 Printing and Binding	10,184.68
561 Tuition To Other School Districts Within the State	1,151,643.36
562 Tuition To Pennsylvania Charter Schools	3,574,283.78
564 Tuition To Career and Technology Centers	2,353,011.00
568 Tuition To Private Residential Rehabilitative Institutions (PRRI) [In-State] and Detention Centers	123,780.75
580 Travel	16,394.19
594 IU Payment By Withholding for Institutionalized Children's Programs – Special Classes	420.89
<b>Total Other Purchased Services</b>	<b>\$7,427,082.15</b>
600 <u>Supplies</u>	
610 General Supplies	1,429,262.04
640 Books and Periodicals	284,136.23
650 Supplies & Fees – Technology Related	500,213.90
<b>Total Supplies</b>	<b>\$2,213,612.17</b>
700 <u>Property</u>	
738 Technology Software Lease and Other Right-to-Use Arrangements	225,650.64
739 Leases - Other	704,454.65
<b>Total Property</b>	<b>\$930,105.29</b>

LEA : 111444602    Mifflin County SD

Printed 12/14/2023 10:01:20 AM

General Fund (10)		
1000 Instruction		<u>Total</u>
800 <u>Other Objects</u>		
810 Dues and Fees	1,908.00	
Total Other Objects	\$1,908.00	
Total 1000 Instruction	\$52,471,290.39	

LEA : 111444602     Mifflin County SD

Printed 12/14/2023 10:01:20 AM

General Fund (10)

1100 Regular Programs – Elementary / Secondary	Elementary	Secondary	Federal	Total
<b>100 Personnel Services – Salaries</b>				
100 Personnel Services – Salaries	6,990,374.83	5,873,788.04	2,789,709.12	15,653,871.99
<b>Total Personnel Services – Salaries</b>	<b>\$6,990,374.83</b>	<b>\$5,873,788.04</b>	<b>\$2,789,709.12</b>	<b>\$15,653,871.99</b>
<b>200 Personnel Services – Employee Benefits</b>				
210 Group Insurance – Contracted Provider	2,067,574.75	1,654,821.67	713,483.42	4,435,879.84
220 Social Security Contributions	499,382.33	464,709.69	211,373.07	1,175,465.09
230 PSERS Retirement Contributions	2,319,131.98	2,957,181.79	492,056.14	5,768,369.91
250 Unemployment Compensation	4,239.49	2,735.08	5,626.84	12,601.41
260 Workers' Compensation	16,284.15	12,115.34	14,065.18	42,464.67
291 Other Retirement Plans	26,507.50	128,847.50		155,355.00
<b>Total Personnel Services – Employee Benefits</b>	<b>\$4,933,120.20</b>	<b>\$5,220,411.07</b>	<b>\$1,436,604.65</b>	<b>\$11,590,135.92</b>
<b>300 Purchased Professional and Technical Services</b>				
323 Professional Educational Services – Other Educational Agencies		64,674.28		64,674.28
329 Professional Educational Services – Other	287,964.99	218,795.94	109,475.37	616,236.30
<b>Total Purchased Professional and Technical Services</b>	<b>\$287,964.99</b>	<b>\$283,470.22</b>	<b>\$109,475.37</b>	<b>\$680,910.58</b>
<b>400 Purchased Property Services</b>				
430 Repairs and Maintenance Services	25,814.07	30,982.15		56,796.22
440 Rentals		4,313.73		4,313.73
<b>Total Purchased Property Services</b>	<b>\$25,814.07</b>	<b>\$35,295.88</b>		<b>\$61,109.95</b>
<b>500 Other Purchased Services</b>				
510 Student Transportation Services	73,046.16	1,639.72		74,685.88
530 Communications	36,603.15	36,887.01		73,490.16
550 Printing and Binding	3,170.03	7,014.65		10,184.68
561 Tuition To Other School Districts Within the State		226,231.20		226,231.20
562 Tuition To Pennsylvania Charter Schools		2,145,694.57		2,145,694.57
580 Travel	2,929.76	2,501.14		5,430.90
<b>Total Other Purchased Services</b>	<b>\$115,749.10</b>	<b>\$2,419,968.29</b>		<b>\$2,535,717.39</b>
<b>600 Supplies</b>				
610 General Supplies	251,722.70	220,702.07	817,898.34	1,290,323.11
640 Books and Periodicals	38,466.56	2,387.20		40,853.76
650 Supplies & Fees – Technology Related	257,302.93	236,822.47	6,088.50	500,213.90
<b>Total Supplies</b>	<b>\$547,492.19</b>	<b>\$459,911.74</b>	<b>\$823,986.84</b>	<b>\$1,831,390.77</b>
<b>700 Property</b>				
738 Technology Software Lease and Other Right-to-Use Arrangements	97,076.54	128,574.10		225,650.64
739 Leases - Other	333,700.71	370,753.94		704,454.65
<b>Total Property</b>	<b>\$430,777.25</b>	<b>\$499,328.04</b>		<b>\$930,105.29</b>
<b>Total 1100 Regular Programs – Elementary / Secondary</b>	<b>\$13,331,292.63</b>	<b>\$14,792,173.28</b>	<b>\$5,159,775.98</b>	<b>\$33,283,241.89</b>

LEA : 111444602     Mifflin County SD

Printed 12/14/2023 10:01:20 AM

General Fund (10)

1110 Regular Programs	Elementary	Secondary	Federal	Total
<b>100 <u>Personnel Services – Salaries</u></b>				
100 Personnel Services – Salaries	6,990,374.83	5,873,788.04	1,357,058.89	14,221,221.76
<b>Total Personnel Services – Salaries</b>	<b>\$6,990,374.83</b>	<b>\$5,873,788.04</b>	<b>\$1,357,058.89</b>	<b>\$14,221,221.76</b>
<b>200 <u>Personnel Services – Employee Benefits</u></b>				
210 Group Insurance – Contracted Provider	2,067,574.75	1,654,821.67	233,973.64	3,956,370.06
220 Social Security Contributions	499,382.33	464,709.69	104,236.72	1,068,328.74
230 PSERS Retirement Contributions	2,319,131.98	2,957,181.79	240,890.17	5,517,203.94
250 Unemployment Compensation	4,239.49	2,735.08	2,755.43	9,730.00
260 Workers' Compensation	16,284.15	12,115.34	6,885.51	35,285.00
291 Other Retirement Plans	26,507.50	128,847.50		155,355.00
<b>Total Personnel Services – Employee Benefits</b>	<b>\$4,933,120.20</b>	<b>\$5,220,411.07</b>	<b>\$588,741.47</b>	<b>\$10,742,272.74</b>
<b>300 <u>Purchased Professional and Technical Services</u></b>				
323 Professional Educational Services – Other Educational Agencies		64,674.28		64,674.28
329 Professional Educational Services – Other	287,964.99	218,795.94	55,959.17	562,720.10
<b>Total Purchased Professional and Technical Services</b>	<b>\$287,964.99</b>	<b>\$283,470.22</b>	<b>\$55,959.17</b>	<b>\$627,394.38</b>
<b>400 <u>Purchased Property Services</u></b>				
430 Repairs and Maintenance Services	25,814.07	30,982.15		56,796.22
440 Rentals		4,313.73		4,313.73
<b>Total Purchased Property Services</b>	<b>\$25,814.07</b>	<b>\$35,295.88</b>		<b>\$61,109.95</b>
<b>500 <u>Other Purchased Services</u></b>				
510 Student Transportation Services	73,046.16	1,639.72		74,685.88
530 Communications	36,603.15	36,887.01		73,490.16
550 Printing and Binding	3,170.03	7,014.65		10,184.68
561 Tuition To Other School Districts Within the State		226,231.20		226,231.20
562 Tuition To Pennsylvania Charter Schools		2,145,694.57		2,145,694.57
580 Travel	2,929.76	2,501.14		5,430.90
<b>Total Other Purchased Services</b>	<b>\$115,749.10</b>	<b>\$2,419,968.29</b>		<b>\$2,535,717.39</b>
<b>600 <u>Supplies</u></b>				
610 General Supplies	251,722.70	220,702.07	767,648.60	1,240,073.37
640 Books and Periodicals	38,466.56	2,387.20		40,853.76
650 Supplies & Fees – Technology Related	257,302.93	236,822.47	6,088.50	500,213.90
<b>Total Supplies</b>	<b>\$547,492.19</b>	<b>\$459,911.74</b>	<b>\$773,737.10</b>	<b>\$1,781,141.03</b>
<b>700 <u>Property</u></b>				
738 Technology Software Lease and Other Right-to-Use Arrangements	97,076.54	128,574.10		225,650.64
739 Leases - Other	333,700.71	370,753.94		704,454.65
<b>Total Property</b>	<b>\$430,777.25</b>	<b>\$499,328.04</b>		<b>\$930,105.29</b>
<b>Total 1110 Regular Programs</b>	<b>\$13,331,292.63</b>	<b>\$14,792,173.28</b>	<b>\$2,775,496.63</b>	<b>\$30,898,962.54</b>

LEA : 111444602     Mifflin County SD

Printed 12/14/2023 10:01:20 AM

General Fund (10)

1190 Federally-Funded Regular Programs

	<u>Elementary</u>	<u>Secondary</u>	<u>Federal</u>	<u>Total</u>
<b>100 <u>Personnel Services – Salaries</u></b>				
100 Personnel Services – Salaries			1,432,650.23	1,432,650.23
<b>Total Personnel Services – Salaries</b>			<b>\$1,432,650.23</b>	<b>\$1,432,650.23</b>
<b>200 <u>Personnel Services – Employee Benefits</u></b>				
210 Group Insurance – Contracted Provider			479,509.78	479,509.78
220 Social Security Contributions			107,136.35	107,136.35
230 PSERS Retirement Contributions			251,165.97	251,165.97
250 Unemployment Compensation			2,871.41	2,871.41
260 Workers' Compensation			7,179.67	7,179.67
<b>Total Personnel Services – Employee Benefits</b>			<b>\$847,863.18</b>	<b>\$847,863.18</b>
<b>300 <u>Purchased Professional and Technical Services</u></b>				
329 Professional Educational Services – Other			53,516.20	53,516.20
<b>Total Purchased Professional and Technical Services</b>			<b>\$53,516.20</b>	<b>\$53,516.20</b>
<b>600 <u>Supplies</u></b>				
610 General Supplies			50,249.74	50,249.74
<b>Total Supplies</b>			<b>\$50,249.74</b>	<b>\$50,249.74</b>
<b>Total 1190 Federally-Funded Regular Programs</b>			<b>\$2,384,279.35</b>	<b>\$2,384,279.35</b>

LEA : 111444602     Mifflin County SD

Printed 12/14/2023 10:01:20 AM

General Fund (10)

1200 Special Programs – Elementary / Secondary	Elementary	Secondary	Federal	Total
<b>100 Personnel Services – Salaries</b>				
100 Personnel Services – Salaries	3,335,206.06	1,986,631.57	794,517.90	6,116,355.53
<b>Total Personnel Services – Salaries</b>	<b>\$3,335,206.06</b>	<b>\$1,986,631.57</b>	<b>\$794,517.90</b>	<b>\$6,116,355.53</b>
<b>200 Personnel Services – Employee Benefits</b>				
210 Group Insurance – Contracted Provider	1,026,933.30	673,058.02	380,372.65	2,080,363.97
220 Social Security Contributions	250,239.32	149,253.22	59,415.81	458,908.35
230 PSERS Retirement Contributions	1,199,258.68	717,938.58	134,494.73	2,051,691.99
250 Unemployment Compensation	1,554.22	930.00	1,585.79	4,070.01
260 Workers' Compensation	6,877.29	4,103.49	3,964.40	14,945.18
291 Other Retirement Plans	1,607.73	10,089.09		11,696.82
<b>Total Personnel Services – Employee Benefits</b>	<b>\$2,486,470.54</b>	<b>\$1,555,372.40</b>	<b>\$579,833.38</b>	<b>\$4,621,676.32</b>
<b>300 Purchased Professional and Technical Services</b>				
322 Professional Educational Services – Ius	16,410.77		17,504.00	33,914.77
323 Professional Educational Services – Other Educational Agencies	11,925.57	222,476.41		234,401.98
329 Professional Educational Services – Other	138,641.33	71,515.36	2,030.34	212,187.03
330 Other Professional Services			1,610.00	1,610.00
<b>Total Purchased Professional and Technical Services</b>	<b>\$166,977.67</b>	<b>\$293,991.77</b>	<b>\$21,144.34</b>	<b>\$482,113.78</b>
<b>400 Purchased Property Services</b>				
430 Repairs and Maintenance Services	589.76	589.87		1,179.63
<b>Total Purchased Property Services</b>	<b>\$589.76</b>	<b>\$589.87</b>		<b>\$1,179.63</b>
<b>500 Other Purchased Services</b>				
510 Student Transportation Services		48,744.29		48,744.29
530 Communications			442.33	442.33
561 Tuition To Other School Districts Within the State		920,519.43		920,519.43
562 Tuition To Pennsylvania Charter Schools		1,428,589.21		1,428,589.21
568 Tuition To Private Residential Rehabilitative Institutions (PRRI) [In-State] and Detention Centers	37,527.99			37,527.99
580 Travel	2,192.20	6,399.02		8,591.22
594 IU Payment By Withholding for Institutionalized Children's Programs – Special Classes		420.89		420.89
<b>Total Other Purchased Services</b>	<b>\$39,720.19</b>	<b>\$2,404,672.84</b>	<b>\$442.33</b>	<b>\$2,444,835.36</b>
<b>600 Supplies</b>				
610 General Supplies	41,704.80	29,166.22	9,703.25	80,574.27
<b>Total Supplies</b>	<b>\$41,704.80</b>	<b>\$29,166.22</b>	<b>\$9,703.25</b>	<b>\$80,574.27</b>
<b>800 Other Objects</b>				
810 Dues and Fees	1,454.00	454.00		1,908.00
<b>Total Other Objects</b>	<b>\$1,454.00</b>	<b>\$454.00</b>		<b>\$1,908.00</b>
<b>Total 1200 Special Programs – Elementary / Secondary</b>	<b>\$6,072,123.02</b>	<b>\$6,270,878.67</b>	<b>\$1,405,641.20</b>	<b>\$13,748,642.89</b>

LEA : 111444602     Mifflin County SD

Printed 12/14/2023 10:01:20 AM

General Fund (10)

1210 Life Skills Support

	<u>Elementary</u>	<u>Secondary</u>	<u>Federal</u>	<u>Total</u>
<b>100 <u>Personnel Services – Salaries</u></b>				
100 Personnel Services – Salaries	387,408.30	496,654.61	3,451.47	887,514.38
<b>Total Personnel Services – Salaries</b>	<b>\$387,408.30</b>	<b>\$496,654.61</b>	<b>\$3,451.47</b>	<b>\$887,514.38</b>
<b>200 <u>Personnel Services – Employee Benefits</u></b>				
210 Group Insurance – Contracted Provider	168,043.00	295,460.35	17,110.17	480,613.52
220 Social Security Contributions	28,921.21	37,042.66	264.00	66,227.87
230 PSERS Retirement Contributions	133,901.43	171,593.81	458.72	305,953.96
250 Unemployment Compensation	181.85	231.47	6.89	420.21
260 Workers' Compensation	798.74	1,028.46	17.24	1,844.44
291 Other Retirement Plans		139.09		139.09
<b>Total Personnel Services – Employee Benefits</b>	<b>\$331,846.23</b>	<b>\$505,495.84</b>	<b>\$17,857.02</b>	<b>\$855,199.09</b>
<b>300 <u>Purchased Professional and Technical Services</u></b>				
329 Professional Educational Services – Other	6,309.76	8,571.48		14,881.24
<b>Total Purchased Professional and Technical Services</b>	<b>\$6,309.76</b>	<b>\$8,571.48</b>		<b>\$14,881.24</b>
<b>500 <u>Other Purchased Services</u></b>				
510 Student Transportation Services		880.69		880.69
580 Travel		1,214.10		1,214.10
<b>Total Other Purchased Services</b>		<b>\$2,094.79</b>		<b>\$2,094.79</b>
<b>600 <u>Supplies</u></b>				
610 General Supplies	2,395.96	8,227.21		10,623.17
<b>Total Supplies</b>	<b>\$2,395.96</b>	<b>\$8,227.21</b>		<b>\$10,623.17</b>
<b>Total 1210 Life Skills Support</b>	<b>\$727,960.25</b>	<b>\$1,021,043.93</b>	<b>\$21,308.49</b>	<b>\$1,770,312.67</b>



LEA : 111444602     Mifflin County SD

Printed 12/14/2023 10:01:20 AM

General Fund (10)

1220 Sensory Support	Elementary	Secondary	Federal	Total
<b>100 <u>Personnel Services – Salaries</u></b>				
100 Personnel Services – Salaries	478,523.52	105,871.96		584,395.48
<b>Total Personnel Services – Salaries</b>	<b>\$478,523.52</b>	<b>\$105,871.96</b>		<b>\$584,395.48</b>
<b>200 <u>Personnel Services – Employee Benefits</u></b>				
210 Group Insurance – Contracted Provider	106,184.69	9,350.77		115,535.46
220 Social Security Contributions	36,079.16	8,011.16		44,090.32
230 PSERS Retirement Contributions	165,084.54	35,214.78		200,299.32
250 Unemployment Compensation	224.80	51.06		275.86
260 Workers' Compensation	987.61	220.84		1,208.45
<b>Total Personnel Services – Employee Benefits</b>	<b>\$308,560.80</b>	<b>\$52,848.61</b>		<b>\$361,409.41</b>
<b>400 <u>Purchased Property Services</u></b>				
430 Repairs and Maintenance Services	589.76	589.87		1,179.63
<b>Total Purchased Property Services</b>	<b>\$589.76</b>	<b>\$589.87</b>		<b>\$1,179.63</b>
<b>500 <u>Other Purchased Services</u></b>				
580 Travel	738.74	650.71		1,389.45
<b>Total Other Purchased Services</b>	<b>\$738.74</b>	<b>\$650.71</b>		<b>\$1,389.45</b>
<b>600 <u>Supplies</u></b>				
610 General Supplies	6,545.22	2,020.20		8,565.42
<b>Total Supplies</b>	<b>\$6,545.22</b>	<b>\$2,020.20</b>		<b>\$8,565.42</b>
<b>800 <u>Other Objects</u></b>				
810 Dues and Fees	1,454.00	454.00		1,908.00
<b>Total Other Objects</b>	<b>\$1,454.00</b>	<b>\$454.00</b>		<b>\$1,908.00</b>
<b>Total 1220 Sensory Support</b>	<b>\$796,412.04</b>	<b>\$162,435.35</b>		<b>\$958,847.39</b>

LEA : 111444602     Mifflin County SD

Printed 12/14/2023 10:01:20 AM

General Fund (10)

1230 Emotional Support

	<u>Elementary</u>	<u>Secondary</u>	<u>Federal</u>	<u>Total</u>
<b>100 <u>Personnel Services – Salaries</u></b>				
100 Personnel Services – Salaries	1,126,133.78	276,371.15	124,253.22	1,526,758.15
<b>Total Personnel Services – Salaries</b>	<b>\$1,126,133.78</b>	<b>\$276,371.15</b>	<b>\$124,253.22</b>	<b>\$1,526,758.15</b>
<b>200 <u>Personnel Services – Employee Benefits</u></b>				
210 Group Insurance – Contracted Provider	339,963.74	79,288.16	52,235.56	471,487.46
220 Social Security Contributions	84,516.47	20,805.28	9,369.21	114,690.96
230 PSERS Retirement Contributions	389,922.65	96,274.33	20,495.34	506,692.32
250 Unemployment Compensation	525.78	128.54	248.49	902.81
260 Workers' Compensation	2,322.95	567.63	621.19	3,511.77
291 Other Retirement Plans		1,230.00		1,230.00
<b>Total Personnel Services – Employee Benefits</b>	<b>\$817,251.59</b>	<b>\$198,293.94</b>	<b>\$82,969.79</b>	<b>\$1,098,515.32</b>
<b>300 <u>Purchased Professional and Technical Services</u></b>				
329 Professional Educational Services – Other	23,056.63	2,264.47	1,256.96	26,578.06
330 Other Professional Services			1,610.00	1,610.00
<b>Total Purchased Professional and Technical Services</b>	<b>\$23,056.63</b>	<b>\$2,264.47</b>	<b>\$2,866.96</b>	<b>\$28,188.06</b>
<b>500 <u>Other Purchased Services</u></b>				
561 Tuition To Other School Districts Within the State		861,280.63		861,280.63
580 Travel	220.08	3,573.08		3,793.16
<b>Total Other Purchased Services</b>	<b>\$220.08</b>	<b>\$864,853.71</b>		<b>\$865,073.79</b>
<b>600 <u>Supplies</u></b>				
610 General Supplies	17,538.94	3,080.15	9,703.25	30,322.34
<b>Total Supplies</b>	<b>\$17,538.94</b>	<b>\$3,080.15</b>	<b>\$9,703.25</b>	<b>\$30,322.34</b>
<b>Total 1230 Emotional Support</b>	<b>\$1,984,201.02</b>	<b>\$1,344,863.42</b>	<b>\$219,793.22</b>	<b>\$3,548,857.66</b>

LEA : 111444602     Mifflin County SD

Printed 12/14/2023 10:01:20 AM

General Fund (10)

1240 Academic Support

	Elementary	Secondary	Federal	Total
<b>100 <u>Personnel Services – Salaries</u></b>				
100 Personnel Services – Salaries	1,252,257.22	1,073,783.90	666,813.21	2,992,854.33
<b>Total Personnel Services – Salaries</b>	<b>\$1,252,257.22</b>	<b>\$1,073,783.90</b>	<b>\$666,813.21</b>	<b>\$2,992,854.33</b>
<b>200 <u>Personnel Services – Employee Benefits</u></b>				
210 Group Insurance – Contracted Provider	385,014.17	288,916.14	311,026.92	984,957.23
220 Social Security Contributions	93,846.35	80,798.51	49,782.60	224,427.46
230 PSERS Retirement Contributions	479,715.17	402,884.77	113,540.67	996,140.61
250 Unemployment Compensation	580.74	503.35	1,330.41	2,414.50
260 Workers' Compensation	2,583.62	2,217.12	3,325.97	8,126.71
291 Other Retirement Plans	1,607.73	8,720.00		10,327.73
<b>Total Personnel Services – Employee Benefits</b>	<b>\$963,347.78</b>	<b>\$784,039.89</b>	<b>\$479,006.57</b>	<b>\$2,226,394.24</b>
<b>300 <u>Purchased Professional and Technical Services</u></b>				
323 Professional Educational Services – Other Educational Agencies	11,925.57	222,476.41		234,401.98
329 Professional Educational Services – Other	70,699.94	22,104.41	773.38	93,577.73
<b>Total Purchased Professional and Technical Services</b>	<b>\$82,625.51</b>	<b>\$244,580.82</b>	<b>\$773.38</b>	<b>\$327,979.71</b>
<b>500 <u>Other Purchased Services</u></b>				
510 Student Transportation Services		47,863.60		47,863.60
530 Communications			442.33	442.33
561 Tuition To Other School Districts Within the State		59,238.80		59,238.80
562 Tuition To Pennsylvania Charter Schools		1,428,589.21		1,428,589.21
580 Travel	479.10	190.96		670.06
<b>Total Other Purchased Services</b>	<b>\$479.10</b>	<b>\$1,535,882.57</b>	<b>\$442.33</b>	<b>\$1,536,804.00</b>
<b>600 <u>Supplies</u></b>				
610 General Supplies	13,838.00	14,438.79		28,276.79
<b>Total Supplies</b>	<b>\$13,838.00</b>	<b>\$14,438.79</b>		<b>\$28,276.79</b>
<b>Total 1240 Academic Support</b>	<b>\$2,312,547.61</b>	<b>\$3,652,725.97</b>	<b>\$1,147,035.49</b>	<b>\$7,112,309.07</b>

LEA : 111444602     Mifflin County SD

Printed 12/14/2023 10:01:20 AM

General Fund (10)

1241 Learning Support – Public	Elementary	Secondary	Federal	Total
<b>100 Personnel Services – Salaries</b>				
100 Personnel Services – Salaries	1,207,605.64	1,055,985.48	666,813.21	2,930,404.33
<b>Total Personnel Services – Salaries</b>	<b>\$1,207,605.64</b>	<b>\$1,055,985.48</b>	<b>\$666,813.21</b>	<b>\$2,930,404.33</b>
<b>200 Personnel Services – Employee Benefits</b>				
210 Group Insurance – Contracted Provider	378,070.57	286,143.99	311,026.92	975,241.48
220 Social Security Contributions	90,558.85	79,488.13	49,782.60	219,829.58
230 PSERS Retirement Contributions	463,970.91	396,609.12	113,540.67	974,120.70
250 Unemployment Compensation	561.94	493.88	1,330.41	2,386.23
260 Workers' Compensation	2,495.47	2,178.30	3,325.97	7,999.74
291 Other Retirement Plans	1,607.73	8,720.00		10,327.73
<b>Total Personnel Services – Employee Benefits</b>	<b>\$937,265.47</b>	<b>\$773,633.42</b>	<b>\$479,006.57</b>	<b>\$2,189,905.46</b>
<b>300 Purchased Professional and Technical Services</b>				
323 Professional Educational Services – Other Educational Agencies	11,925.57	222,476.41		234,401.98
329 Professional Educational Services – Other	70,699.94	22,104.41	773.38	93,577.73
<b>Total Purchased Professional and Technical Services</b>	<b>\$82,625.51</b>	<b>\$244,580.82</b>	<b>\$773.38</b>	<b>\$327,979.71</b>
<b>500 Other Purchased Services</b>				
510 Student Transportation Services		47,863.60		47,863.60
530 Communications			442.33	442.33
561 Tuition To Other School Districts Within the State		59,238.80		59,238.80
562 Tuition To Pennsylvania Charter Schools		1,428,589.21		1,428,589.21
<b>Total Other Purchased Services</b>		<b>\$1,535,691.61</b>	<b>\$442.33</b>	<b>\$1,536,133.94</b>
<b>600 Supplies</b>				
610 General Supplies	13,622.61	14,192.03		27,814.64
<b>Total Supplies</b>	<b>\$13,622.61</b>	<b>\$14,192.03</b>		<b>\$27,814.64</b>
<b>Total 1241 Learning Support – Public</b>	<b>\$2,241,119.23</b>	<b>\$3,624,083.36</b>	<b>\$1,147,035.49</b>	<b>\$7,012,238.08</b>

LEA : 111444602     Mifflin County SD

Printed 12/14/2023 10:01:20 AM

General Fund (10)

1243 Gifted Support	Elementary	Secondary	Federal	Total
<b>100 Personnel Services – Salaries</b>				
100 Personnel Services – Salaries	44,651.58	17,798.42		62,450.00
<b>Total Personnel Services – Salaries</b>	<b>\$44,651.58</b>	<b>\$17,798.42</b>		<b>\$62,450.00</b>
<b>200 Personnel Services – Employee Benefits</b>				
210 Group Insurance – Contracted Provider	6,943.60	2,772.15		9,715.75
220 Social Security Contributions	3,287.50	1,310.38		4,597.88
230 PSERS Retirement Contributions	15,744.26	6,275.65		22,019.91
250 Unemployment Compensation	18.80	9.47		28.27
260 Workers' Compensation	88.15	38.82		126.97
<b>Total Personnel Services – Employee Benefits</b>	<b>\$26,082.31</b>	<b>\$10,406.47</b>		<b>\$36,488.78</b>
<b>500 Other Purchased Services</b>				
580 Travel	479.10	190.96		670.06
<b>Total Other Purchased Services</b>	<b>\$479.10</b>	<b>\$190.96</b>		<b>\$670.06</b>
<b>600 Supplies</b>				
610 General Supplies	215.39	246.76		462.15
<b>Total Supplies</b>	<b>\$215.39</b>	<b>\$246.76</b>		<b>\$462.15</b>
<b>Total 1243 Gifted Support</b>	<b>\$71,428.38</b>	<b>\$28,642.61</b>		<b>\$100,070.99</b>

LEA : 111444602     Mifflin County SD

Printed 12/14/2023 10:01:20 AM

General Fund (10)

1260 Physical Support	Elementary	Secondary	Federal	Total
<b>100 <u>Personnel Services – Salaries</u></b>				
100 Personnel Services – Salaries	90,883.24	33,949.95		124,833.19
<b>Total Personnel Services – Salaries</b>	<b>\$90,883.24</b>	<b>\$33,949.95</b>		<b>\$124,833.19</b>
<b>200 <u>Personnel Services – Employee Benefits</u></b>				
210 Group Insurance – Contracted Provider	27,727.70	42.60		27,770.30
220 Social Security Contributions	6,876.13	2,595.61		9,471.74
230 PSERS Retirement Contributions	30,634.89	11,970.89		42,605.78
250 Unemployment Compensation	41.05	15.58		56.63
260 Workers' Compensation	184.37	69.44		253.81
<b>Total Personnel Services – Employee Benefits</b>	<b>\$65,464.14</b>	<b>\$14,694.12</b>		<b>\$80,158.26</b>
<b>300 <u>Purchased Professional and Technical Services</u></b>				
329 Professional Educational Services – Other	38,575.00	38,575.00		77,150.00
<b>Total Purchased Professional and Technical Services</b>	<b>\$38,575.00</b>	<b>\$38,575.00</b>		<b>\$77,150.00</b>
<b>500 <u>Other Purchased Services</u></b>				
580 Travel	754.28	770.17		1,524.45
<b>Total Other Purchased Services</b>	<b>\$754.28</b>	<b>\$770.17</b>		<b>\$1,524.45</b>
<b>600 <u>Supplies</u></b>				
610 General Supplies	1,386.68	1,399.87		2,786.55
<b>Total Supplies</b>	<b>\$1,386.68</b>	<b>\$1,399.87</b>		<b>\$2,786.55</b>
<b>Total 1260 Physical Support</b>	<b>\$197,063.34</b>	<b>\$89,389.11</b>		<b>\$286,452.45</b>

LEA : 111444602     Mifflin County SD

Printed 12/14/2023 10:01:20 AM

General Fund (10)

1290 Special Programs - Other Support	<u>Elementary</u>	<u>Secondary</u>	<u>Federal</u>	<u>Total</u>
300 <u>Purchased Professional and Technical Services</u>				
322 Professional Educational Services – Ius	16,410.77		17,504.00	33,914.77
Total Purchased Professional and Technical Services	\$16,410.77		\$17,504.00	\$33,914.77
500 <u>Other Purchased Services</u>				
568 Tuition To Private Residential Rehabilitative Institutions (PRRI) [In-State] and Detention Centers	37,527.99			37,527.99
594 IU Payment By Withholding for Institutionalized Children's Programs – Special Classes		420.89		420.89
Total Other Purchased Services	\$37,527.99	\$420.89		\$37,948.88
Total 1290 Special Programs - Other Support	\$53,938.76	\$420.89	\$17,504.00	\$71,863.65

LEA : 111444602     Mifflin County SD

Printed 12/14/2023 10:01:20 AM

General Fund (10)				
1300 Vocational Education	<u>Elementary</u>	<u>Secondary</u>	<u>Federal</u>	<u>Total</u>
100 <u>Personnel Services – Salaries</u>				
100 Personnel Services – Salaries		840,066.82	98,703.18	938,770.00
Total Personnel Services – Salaries		\$840,066.82	\$98,703.18	\$938,770.00
200 <u>Personnel Services – Employee Benefits</u>				
210 Group Insurance – Contracted Provider		267,467.59	26,616.49	294,084.08
220 Social Security Contributions		62,694.98	7,358.79	70,053.77
230 PSERS Retirement Contributions		291,741.26	17,401.40	309,142.66
250 Unemployment Compensation		393.36	197.34	590.70
260 Workers' Compensation		1,738.31	445.23	2,183.54
291 Other Retirement Plans		10,945.00		10,945.00
Total Personnel Services – Employee Benefits		\$634,980.50	\$52,019.25	\$686,999.75
300 <u>Purchased Professional and Technical Services</u>				
329 Professional Educational Services – Other		31,467.35	571.63	32,038.98
Total Purchased Professional and Technical Services		\$31,467.35	\$571.63	\$32,038.98
500 <u>Other Purchased Services</u>				
564 Tuition To Career and Technology Centers		2,353,011.00		2,353,011.00
Total Other Purchased Services		\$2,353,011.00		\$2,353,011.00
600 <u>Supplies</u>				
610 General Supplies		51,312.65		51,312.65
Total Supplies		\$51,312.65		\$51,312.65
Total 1300 Vocational Education		\$3,910,838.32	\$151,294.06	\$4,062,132.38



LEA : 111444602     Mifflin County SD

Printed 12/14/2023 10:01:20 AM

General Fund (10)				
1400 Other Instructional Programs – Elementary / Secondary	<u>Elementary</u>	<u>Secondary</u>	<u>Federal</u>	<u>Total</u>
100 <u>Personnel Services – Salaries</u>				
100 Personnel Services – Salaries	6,719.24	433.00	587,531.27	594,683.51
Total Personnel Services – Salaries	\$6,719.24	\$433.00	\$587,531.27	\$594,683.51
200 <u>Personnel Services – Employee Benefits</u>				
210 Group Insurance – Contracted Provider			141,230.35	141,230.35
220 Social Security Contributions	500.80	32.42	44,069.72	44,602.94
230 PSERS Retirement Contributions	1,775.35	152.68	102,518.22	104,446.25
250 Unemployment Compensation	1.40	0.85	1,175.03	1,177.28
260 Workers' Compensation	10.40	2.15	2,887.31	2,899.86
291 Other Retirement Plans		650.00		650.00
Total Personnel Services – Employee Benefits	\$2,287.95	\$838.10	\$291,880.63	\$295,006.68
300 <u>Purchased Professional and Technical Services</u>				
329 Professional Educational Services – Other	1,193.72	29,947.26	13,292.16	44,433.14
Total Purchased Professional and Technical Services	\$1,193.72	\$29,947.26	\$13,292.16	\$44,433.14
500 <u>Other Purchased Services</u>				
530 Communications		0.84		0.84
561 Tuition To Other School Districts Within the State		4,892.73		4,892.73
568 Tuition To Private Residential Rehabilitative Institutions (PRRI) [In-State] and Detention Centers		86,252.76		86,252.76
580 Travel		197.22		197.22
Total Other Purchased Services		\$91,343.55		\$91,343.55
600 <u>Supplies</u>				
610 General Supplies	652.07	4,954.77		5,606.84
640 Books and Periodicals	50,142.00	193,140.47		243,282.47
Total Supplies	\$50,794.07	\$198,095.24		\$248,889.31
Total 1400 Other Instructional Programs – Elementary / Secondary	\$60,994.98	\$320,657.15	\$892,704.06	\$1,274,356.19

LEA : 111444602     Mifflin County SD

Printed 12/14/2023 10:01:20 AM

General Fund (10)

1430 Homebound Instruction	<u>Elementary</u>	<u>Secondary</u>	<u>Federal</u>	<u>Total</u>
<b>100 <u>Personnel Services – Salaries</u></b>				
100 Personnel Services – Salaries	5,035.00	367.00		5,402.00
<b>Total Personnel Services – Salaries</b>	<b>\$5,035.00</b>	<b>\$367.00</b>		<b>\$5,402.00</b>
<b>200 <u>Personnel Services – Employee Benefits</u></b>				
220 Social Security Contributions	372.00	27.45		399.45
230 PSERS Retirement Contributions	1,775.35	129.40		1,904.75
250 Unemployment Compensation	2.06	0.73		2.79
260 Workers' Compensation	9.72	1.83		11.55
<b>Total Personnel Services – Employee Benefits</b>	<b>\$2,159.13</b>	<b>\$159.41</b>		<b>\$2,318.54</b>
<b>Total 1430 Homebound Instruction</b>	<b>\$7,194.13</b>	<b>\$526.41</b>		<b>\$7,720.54</b>

LEA : 111444602     Mifflin County SD

Printed 12/14/2023 10:01:20 AM

General Fund (10)				
1440 Alternative Regular Education Programs	<u>Elementary</u>	<u>Secondary</u>	<u>Federal</u>	<u>Total</u>
100 <u>Personnel Services – Salaries</u>				
100 Personnel Services – Salaries	1,684.24	66.00	587,531.27	589,281.51
<b>Total Personnel Services – Salaries</b>	<b>\$1,684.24</b>	<b>\$66.00</b>	<b>\$587,531.27</b>	<b>\$589,281.51</b>
200 <u>Personnel Services – Employee Benefits</u>				
210 Group Insurance – Contracted Provider			141,230.35	141,230.35
220 Social Security Contributions	128.80	4.97	44,069.72	44,203.49
230 PSERS Retirement Contributions		23.28	102,518.22	102,541.50
250 Unemployment Compensation	(0.66)	0.12	1,175.03	1,174.49
260 Workers' Compensation	0.68	0.32	2,887.31	2,888.31
291 Other Retirement Plans		650.00		650.00
<b>Total Personnel Services – Employee Benefits</b>	<b>\$128.82</b>	<b>\$678.69</b>	<b>\$291,880.63</b>	<b>\$292,688.14</b>
300 <u>Purchased Professional and Technical Services</u>				
329 Professional Educational Services – Other	1,193.72	29,947.26	13,292.16	44,433.14
<b>Total Purchased Professional and Technical Services</b>	<b>\$1,193.72</b>	<b>\$29,947.26</b>	<b>\$13,292.16</b>	<b>\$44,433.14</b>
500 <u>Other Purchased Services</u>				
530 Communications		0.84		0.84
561 Tuition To Other School Districts Within the State		4,892.73		4,892.73
568 Tuition To Private Residential Rehabilitative Institutions (PRRI) [In-State] and Detention Centers		86,252.76		86,252.76
580 Travel		197.22		197.22
<b>Total Other Purchased Services</b>		<b>\$91,343.55</b>		<b>\$91,343.55</b>
600 <u>Supplies</u>				
610 General Supplies	652.07	4,954.77		5,606.84
640 Books and Periodicals	50,142.00	193,140.47		243,282.47
<b>Total Supplies</b>	<b>\$50,794.07</b>	<b>\$198,095.24</b>		<b>\$248,889.31</b>
<b>Total 1440 Alternative Regular Education Programs</b>	<b>\$53,800.85</b>	<b>\$320,130.74</b>	<b>\$892,704.06</b>	<b>\$1,266,635.65</b>

LEA : 111444602     Mifflin County SD

Printed 12/14/2023 10:01:20 AM

General Fund (10)

1441 Adjudicated / Court-Placed Programs

500 Other Purchased Services

	<u>Elementary</u>	<u>Secondary</u>	<u>Federal</u>	<u>Total</u>
561 Tuition To Other School Districts Within the State		4,892.73		4,892.73
568 Tuition To Private Residential Rehabilitative Institutions (PRRI) [In-State] and Detention Centers		10,064.76		10,064.76
<b>Total Other Purchased Services</b>		<b>\$14,957.49</b>		<b>\$14,957.49</b>
<b>Total 1441 Adjudicated / Court-Placed Programs</b>		<b>\$14,957.49</b>		<b>\$14,957.49</b>

LEA : 111444602     Mifflin County SD

Printed 12/14/2023 10:01:20 AM

General Fund (10)

1442 Alternative Education Programs	Elementary	Secondary	Federal	Total
<b>100 Personnel Services – Salaries</b>				
100 Personnel Services – Salaries	1,684.24	66.00	587,531.27	589,281.51
<b>Total Personnel Services – Salaries</b>	<b>\$1,684.24</b>	<b>\$66.00</b>	<b>\$587,531.27</b>	<b>\$589,281.51</b>
<b>200 Personnel Services – Employee Benefits</b>				
210 Group Insurance – Contracted Provider			141,230.35	141,230.35
220 Social Security Contributions	128.80	4.97	44,069.72	44,203.49
230 PSERS Retirement Contributions		23.28	102,518.22	102,541.50
250 Unemployment Compensation	(0.66)	0.12	1,175.03	1,174.49
260 Workers' Compensation	0.68	0.32	2,887.31	2,888.31
291 Other Retirement Plans		650.00		650.00
<b>Total Personnel Services – Employee Benefits</b>	<b>\$128.82</b>	<b>\$678.69</b>	<b>\$291,880.63</b>	<b>\$292,688.14</b>
<b>300 Purchased Professional and Technical Services</b>				
329 Professional Educational Services – Other	1,193.72	29,947.26	13,292.16	44,433.14
<b>Total Purchased Professional and Technical Services</b>	<b>\$1,193.72</b>	<b>\$29,947.26</b>	<b>\$13,292.16</b>	<b>\$44,433.14</b>
<b>500 Other Purchased Services</b>				
530 Communications		0.84		0.84
568 Tuition To Private Residential Rehabilitative Institutions (PRRI) [In-State] and Detention Centers		76,188.00		76,188.00
580 Travel		197.22		197.22
<b>Total Other Purchased Services</b>		<b>\$76,386.06</b>		<b>\$76,386.06</b>
<b>600 Supplies</b>				
610 General Supplies	652.07	4,954.77		5,606.84
640 Books and Periodicals	50,142.00	193,140.47		243,282.47
<b>Total Supplies</b>	<b>\$50,794.07</b>	<b>\$198,095.24</b>		<b>\$248,889.31</b>
<b>Total 1442 Alternative Education Programs</b>	<b>\$53,800.85</b>	<b>\$305,173.25</b>	<b>\$892,704.06</b>	<b>\$1,251,678.16</b>

LEA : 111444602     Mifflin County SD

Printed 12/14/2023 10:01:20 AM

General Fund (10)

1500 Nonpublic School Programs	<u>Elementary</u>	<u>Secondary</u>	<u>Federal</u>	<u>Total</u>
100 <u>Personnel Services – Salaries</u>				
100 Personnel Services – Salaries			56,950.00	56,950.00
Total Personnel Services – Salaries			\$56,950.00	\$56,950.00
200 <u>Personnel Services – Employee Benefits</u>				
210 Group Insurance – Contracted Provider			27,684.98	27,684.98
220 Social Security Contributions			4,223.21	4,223.21
230 PSERS Retirement Contributions			10,040.25	10,040.25
250 Unemployment Compensation			113.88	113.88
260 Workers' Compensation			284.70	284.70
Total Personnel Services – Employee Benefits			\$42,347.02	\$42,347.02
500 <u>Other Purchased Services</u>				
580 Travel			2,174.85	2,174.85
Total Other Purchased Services			\$2,174.85	\$2,174.85
600 <u>Supplies</u>				
610 General Supplies			1,445.17	1,445.17
Total Supplies			\$1,445.17	\$1,445.17
Total 1500 Nonpublic School Programs			\$102,917.04	\$102,917.04

LEA : 111444602     Mifflin County SD

Printed 12/14/2023 10:01:26 AM

General Fund (10)

2000 Support Services

Total

100 Personnel Services – Salaries

100 Personnel Services – Salaries	8,616,613.10
-----------------------------------	--------------

<b>Total Personnel Services – Salaries</b>	<b>\$8,616,613.10</b>
--	-----------------------

200 Personnel Services – Employee Benefits

210 Group Insurance – Contracted Provider	2,609,878.46
---	--------------

220 Social Security Contributions	649,380.07
-----------------------------------	------------

230 PSERS Retirement Contributions	2,831,600.18
------------------------------------	--------------

240 Tuition Reimbursement	234,306.81
---------------------------	------------

250 Unemployment Compensation	5,356.64
-------------------------------	----------

260 Workers' Compensation	20,442.48
---------------------------	-----------

291 Other Retirement Plans	107,715.59
----------------------------	------------

<b>Total Personnel Services – Employee Benefits</b>	<b>\$6,458,680.23</b>
---	-----------------------

300 Purchased Professional and Technical Services

310 Official / Administrative Services	225,496.93
--	------------

329 Professional Educational Services – Other	219,361.03
---	------------

330 Other Professional Services	98,490.55
---------------------------------	-----------

340 Technical Services	81,569.18
------------------------	-----------

350 Security / Safety Services	211,756.28
--------------------------------	------------

360 Employee Training and Development Services	54,157.78
--	-----------

390 Other Purchased Professional and Technical Services	15,274.86
---	-----------

<b>Total Purchased Professional and Technical Services</b>	<b>\$906,106.61</b>
--	---------------------

400 Purchased Property Services

410 Cleaning Services	30,419.58
-----------------------	-----------

420 Utility Services	103,246.92
----------------------	------------

430 Repairs and Maintenance Services	816,958.68
--------------------------------------	------------

440 Rentals	6,276.03
-------------	----------

450 Construction Services	880,097.52
---------------------------	------------

<b>Total Purchased Property Services</b>	<b>\$1,836,998.73</b>
--	-----------------------

500 Other Purchased Services

513 Contracted Carriers	4,886,527.43
-------------------------	--------------

516 Student Transportation Services From the IU	22,089.32
---	-----------

519 Student Transportation Services From Other Sources	40,712.62
--	-----------

520 Insurance – General	350.00
-------------------------	--------

523 General Property and Liability Insurance	246,587.56
--	------------

529 Other Insurance	36,975.00
---------------------	-----------

530 Communications	62,952.97
--------------------	-----------

549 Other Advertising/Public Relations	22,521.31
--	-----------

550 Printing and Binding	540.39
--------------------------	--------

580 Travel	38,937.80
------------	-----------

<b>Total Other Purchased Services</b>	<b>\$5,358,194.40</b>
---------------------------------------	-----------------------

600 Supplies

610 General Supplies	427,474.64
----------------------	------------

620 Energy	745,697.32
------------	------------

640 Books and Periodicals	18,574.07
---------------------------	-----------

LEA : 111444602     Mifflin County SD

Printed 12/14/2023 10:01:26 AM

General Fund (10)

2000 Support Services

Total

600 Supplies

650 Supplies & Fees – Technology Related	1,611,293.52
--	--------------

<b>Total Supplies</b>	<b>\$2,803,039.55</b>
-----------------------	-----------------------

700 Property

738 Technology Software Lease and Other Right-to-Use Arrangements	120,067.18
---	------------

752 Capital Equipment – Original and Additional	13,500.00
---	-----------

762 Capitalized Equipment - Replacement	103,280.91
---	------------

768 Capitalized Technology Software - Replacement	42,895.48
---	-----------

<b>Total Property</b>	<b>\$279,743.57</b>
-----------------------	---------------------

800 Other Objects

810 Dues and Fees	43,534.12
-------------------	-----------

820 Claims and Judgments Against the LEA	5,000.00
--	----------

<b>Total Other Objects</b>	<b>\$48,534.12</b>
----------------------------	--------------------

<b>Total 2000 Support Services</b>	<b>\$26,307,910.31</b>
------------------------------------	------------------------



LEA : 111444602     Mifflin County SD

Printed 12/14/2023 10:01:26 AM

General Fund (10)

2100 Support Services – Students	Elementary	Secondary	Federal	Total
<b>100 Personnel Services – Salaries</b>				
100 Personnel Services – Salaries	482,223.69	577,478.98	332,799.52	1,441,302.19
<b>Total Personnel Services – Salaries</b>	<b>\$482,223.69</b>	<b>\$577,478.98</b>	<b>\$332,799.52</b>	<b>\$1,441,302.19</b>
<b>200 Personnel Services – Employee Benefits</b>				
210 Group Insurance – Contracted Provider	132,691.41	180,653.36	98,234.43	427,771.54
220 Social Security Contributions	36,171.66	42,893.80	25,109.71	107,836.46
230 PSERS Retirement Contributions	169,326.94	201,503.22	57,967.66	446,004.57
250 Unemployment Compensation	224.44	270.10	665.78	1,257.82
260 Workers' Compensation	998.73	1,189.28	1,663.59	4,095.48
<b>Total Personnel Services – Employee Benefits</b>	<b>\$339,413.18</b>	<b>\$426,509.76</b>	<b>\$183,641.17</b>	<b>\$986,965.87</b>
<b>300 Purchased Professional and Technical Services</b>				
329 Professional Educational Services – Other	153,152.10	38,072.98		191,225.08
<b>Total Purchased Professional and Technical Services</b>	<b>\$153,152.10</b>	<b>\$38,072.98</b>		<b>\$191,225.08</b>
<b>500 Other Purchased Services</b>				
530 Communications			1,857.90	2,437.12
580 Travel	712.26		1,963.91	2,918.64
<b>Total Other Purchased Services</b>	<b>\$712.26</b>		<b>\$3,821.81</b>	<b>\$5,355.76</b>
<b>600 Supplies</b>				
610 General Supplies	4,888.93	4,309.27	6,874.52	16,072.72
<b>Total Supplies</b>	<b>\$4,888.93</b>	<b>\$4,309.27</b>	<b>\$6,874.52</b>	<b>\$16,072.72</b>
<b>Total 2100 Support Services – Students</b>	<b>\$980,390.16</b>	<b>\$1,046,370.99</b>	<b>\$527,137.02</b>	<b>\$2,640,921.62</b>

LEA : 111444602 Mifflin County SD

Printed 12/14/2023 10:01:26 AM

General Fund (10)

2120 Guidance Services	Elementary	Secondary	Federal	Total
100 Personnel Services – Salaries				
100 Personnel Services – Salaries	260,054.08	484,995.53	183,599.52	928,649.13
Total Personnel Services – Salaries	\$260,054.08	\$484,995.53	\$183,599.52	\$928,649.13
200 Personnel Services – Employee Benefits				
210 Group Insurance – Contracted Provider	85,436.06	154,618.48	30,402.58	270,457.12
220 Social Security Contributions	19,511.52	36,092.16	13,918.78	69,522.46
230 PSERS Retirement Contributions	90,989.73	168,893.64	31,663.50	291,546.87
250 Unemployment Compensation	121.63	225.98	367.53	715.14
260 Workers' Compensation	536.24	996.99	917.91	2,451.14
Total Personnel Services – Employee Benefits	\$196,595.18	\$360,827.25	\$77,270.30	\$634,692.73
600 Supplies				
610 General Supplies	1,655.12	462.51		2,117.63
Total Supplies	\$1,655.12	\$462.51		\$2,117.63
Total 2120 Guidance Services	\$458,304.38	\$846,285.29	\$260,869.82	\$1,565,459.49

LEA : 111444602     Mifflin County SD

Printed 12/14/2023 10:01:26 AM

General Fund (10)

2140 Psychological Services	Elementary	Secondary	Federal	Total
<b>100 Personnel Services – Salaries</b>				
100 Personnel Services – Salaries	222,169.61	92,483.45		314,653.06
<b>Total Personnel Services – Salaries</b>	<b>\$222,169.61</b>	<b>\$92,483.45</b>		<b>\$314,653.06</b>
<b>200 Personnel Services – Employee Benefits</b>				
210 Group Insurance – Contracted Provider	47,255.35	26,034.88		73,290.23
220 Social Security Contributions	16,660.14	6,801.64		23,461.78
230 PSERS Retirement Contributions	78,337.21	32,609.58		110,946.79
250 Unemployment Compensation	102.81	44.12		146.93
260 Workers' Compensation	462.49	192.29		654.78
<b>Total Personnel Services – Employee Benefits</b>	<b>\$142,818.00</b>	<b>\$65,682.51</b>		<b>\$208,500.51</b>
<b>300 Purchased Professional and Technical Services</b>				
329 Professional Educational Services – Other	146,158.41	32,239.60		178,398.01
<b>Total Purchased Professional and Technical Services</b>	<b>\$146,158.41</b>	<b>\$32,239.60</b>		<b>\$178,398.01</b>
<b>500 Other Purchased Services</b>				
580 Travel	712.26			712.26
<b>Total Other Purchased Services</b>	<b>\$712.26</b>			<b>\$712.26</b>
<b>600 Supplies</b>				
610 General Supplies	3,233.81	3,846.76		7,080.57
<b>Total Supplies</b>	<b>\$3,233.81</b>	<b>\$3,846.76</b>		<b>\$7,080.57</b>
<b>Total 2140 Psychological Services</b>	<b>\$515,092.09</b>	<b>\$194,252.32</b>		<b>\$709,344.41</b>

LEA : 111444602     Mifflin County SD

Printed 12/14/2023 10:01:26 AM

General Fund (10)

2160 Social Work Services

	<u>Elementary</u>	<u>Secondary</u>	<u>Federal</u>	<u>Total</u>
<b>100 <u>Personnel Services – Salaries</u></b>				
100 Personnel Services – Salaries			149,200.00	198,000.00
<b>Total Personnel Services – Salaries</b>			<b>\$149,200.00</b>	<b>\$198,000.00</b>
<b>200 <u>Personnel Services – Employee Benefits</u></b>				
210 Group Insurance – Contracted Provider			67,831.85	84,024.19
220 Social Security Contributions			11,190.93	14,852.22
230 PSERS Retirement Contributions			26,304.16	43,510.91
250 Unemployment Compensation			298.25	395.75
260 Workers' Compensation			745.68	989.56
<b>Total Personnel Services – Employee Benefits</b>			<b>\$106,370.87</b>	<b>\$143,772.63</b>
<b>500 <u>Other Purchased Services</u></b>				
530 Communications			1,857.90	2,437.12
580 Travel			1,963.91	2,206.38
<b>Total Other Purchased Services</b>			<b>\$3,821.81</b>	<b>\$4,643.50</b>
<b>600 <u>Supplies</u></b>				
610 General Supplies			6,874.52	6,874.52
<b>Total Supplies</b>			<b>\$6,874.52</b>	<b>\$6,874.52</b>
<b>Total 2160 Social Work Services</b>			<b>\$266,267.20</b>	<b>\$353,290.65</b>

LEA : 111444602     Mifflin County SD

Printed 12/14/2023 10:01:26 AM

General Fund (10)

2190 Other Student Services	<u>Elementary</u>	<u>Secondary</u>	<u>Federal</u>	<u>Total</u>
300 <u>Purchased Professional and Technical Services</u>				
329 Professional Educational Services – Other	6,993.69	5,833.38		12,827.07
<b>Total Purchased Professional and Technical Services</b>	<b>\$6,993.69</b>	<b>\$5,833.38</b>		<b>\$12,827.07</b>
<b>Total 2190 Other Student Services</b>	<b>\$6,993.69</b>	<b>\$5,833.38</b>		<b>\$12,827.07</b>

LEA : 111444602     Mifflin County SD

Printed 12/14/2023 10:01:26 AM

General Fund (10)

2200 Support Services – Instructional Staff	Elementary	Secondary	Federal	Total
<b>100 Personnel Services – Salaries</b>				
100 Personnel Services – Salaries	436,335.01	275,617.38	88,622.08	800,574.47
<b>Total Personnel Services – Salaries</b>	<b>\$436,335.01</b>	<b>\$275,617.38</b>	<b>\$88,622.08</b>	<b>\$800,574.47</b>
<b>200 Personnel Services – Employee Benefits</b>				
210 Group Insurance – Contracted Provider	100,405.26	36,791.71	19,276.03	156,473.00
220 Social Security Contributions	32,726.97	20,848.30	6,738.14	60,313.41
230 PSERS Retirement Contributions	153,146.44	95,067.00	15,624.13	263,837.57
240 Tuition Reimbursement	129,759.18	104,547.63		234,306.81
250 Unemployment Compensation	194.59	130.68	177.59	502.86
260 Workers' Compensation	884.63	575.50	442.98	1,903.11
291 Other Retirement Plans		650.00		650.00
<b>Total Personnel Services – Employee Benefits</b>	<b>\$417,117.07</b>	<b>\$258,610.82</b>	<b>\$42,258.87</b>	<b>\$717,986.76</b>
<b>300 Purchased Professional and Technical Services</b>				
329 Professional Educational Services – Other	8,865.60	2,114.25		10,979.85
360 Employee Training and Development Services	4,373.21	6,497.29	43,132.28	54,002.78
<b>Total Purchased Professional and Technical Services</b>	<b>\$13,238.81</b>	<b>\$8,611.54</b>	<b>\$43,132.28</b>	<b>\$64,982.63</b>
<b>500 Other Purchased Services</b>				
530 Communications	998.97	998.72		1,997.69
580 Travel	4,000.63	6,446.52	13,253.10	23,700.25
<b>Total Other Purchased Services</b>	<b>\$4,999.60</b>	<b>\$7,445.24</b>	<b>\$13,253.10</b>	<b>\$25,697.94</b>
<b>600 Supplies</b>				
610 General Supplies	4,458.23	2,635.55	6,289.04	13,382.82
640 Books and Periodicals	10,767.00	7,307.07	500.00	18,574.07
650 Supplies & Fees – Technology Related			34,713.00	34,713.00
<b>Total Supplies</b>	<b>\$15,225.23</b>	<b>\$9,942.62</b>	<b>\$41,502.04</b>	<b>\$66,669.89</b>
<b>800 Other Objects</b>				
810 Dues and Fees	350.00	350.00		700.00
<b>Total Other Objects</b>	<b>\$350.00</b>	<b>\$350.00</b>		<b>\$700.00</b>
<b>Total 2200 Support Services – Instructional Staff</b>	<b>\$887,265.72</b>	<b>\$560,577.60</b>	<b>\$228,768.37</b>	<b>\$1,676,611.69</b>

LEA : 111444602     Mifflin County SD

Printed 12/14/2023 10:01:26 AM

<b>General Fund (10)</b>				
<b>2250 School Library Services</b>	<b><u>Elementary</u></b>	<b><u>Secondary</u></b>	<b><u>Federal</u></b>	<b><u>Total</u></b>
<b>100 <u>Personnel Services – Salaries</u></b>				
100 Personnel Services – Salaries	250,870.91	107,410.84		358,281.75
<b>Total Personnel Services – Salaries</b>	<b>\$250,870.91</b>	<b>\$107,410.84</b>		<b>\$358,281.75</b>
<b>200 <u>Personnel Services – Employee Benefits</u></b>				
210 Group Insurance – Contracted Provider	73,910.12	10,296.59		84,206.71
220 Social Security Contributions	18,701.60	8,128.64		26,830.24
230 PSERS Retirement Contributions	88,456.92	36,462.69		124,919.61
250 Unemployment Compensation	113.71	51.85		165.56
260 Workers' Compensation	509.41	224.51		733.92
<b>Total Personnel Services – Employee Benefits</b>	<b>\$181,691.76</b>	<b>\$55,164.28</b>		<b>\$236,856.04</b>
<b>300 <u>Purchased Professional and Technical Services</u></b>				
329 Professional Educational Services – Other	8,865.60	2,114.25		10,979.85
<b>Total Purchased Professional and Technical Services</b>	<b>\$8,865.60</b>	<b>\$2,114.25</b>		<b>\$10,979.85</b>
<b>500 <u>Other Purchased Services</u></b>				
580 Travel	31.50			31.50
<b>Total Other Purchased Services</b>	<b>\$31.50</b>			<b>\$31.50</b>
<b>600 <u>Supplies</u></b>				
610 General Supplies	4,165.63	2,470.15		6,635.78
640 Books and Periodicals	10,767.00	7,307.07		18,074.07
<b>Total Supplies</b>	<b>\$14,932.63</b>	<b>\$9,777.22</b>		<b>\$24,709.85</b>
<b>Total 2250 School Library Services</b>	<b>\$456,392.40</b>	<b>\$174,466.59</b>		<b>\$630,858.99</b>

LEA : 111444602     Mifflin County SD

Printed 12/14/2023 10:01:26 AM

General Fund (10)

2260 Instruction and Curriculum Development Services	<u>Elementary</u>	<u>Secondary</u>	<u>Federal</u>	<u>Total</u>
100 <u>Personnel Services – Salaries</u>				
100 Personnel Services – Salaries	148,329.60	142,329.04	78,171.83	368,830.47
<b>Total Personnel Services – Salaries</b>	<b>\$148,329.60</b>	<b>\$142,329.04</b>	<b>\$78,171.83</b>	<b>\$368,830.47</b>
200 <u>Personnel Services – Employee Benefits</u>				
210 Group Insurance – Contracted Provider	26,495.14	26,495.12	19,276.03	72,266.29
220 Social Security Contributions	11,228.33	10,773.36	5,938.62	27,940.31
230 PSERS Retirement Contributions	51,596.27	49,480.12	13,781.75	114,858.14
250 Unemployment Compensation	69.14	65.48	156.65	291.27
260 Workers' Compensation	309.13	294.93	390.72	994.78
291 Other Retirement Plans		650.00		650.00
<b>Total Personnel Services – Employee Benefits</b>	<b>\$89,698.01</b>	<b>\$87,759.01</b>	<b>\$39,543.77</b>	<b>\$217,000.79</b>
500 <u>Other Purchased Services</u>				
530 Communications	998.97	998.72		1,997.69
580 Travel	1,096.88	1,096.87		2,193.75
<b>Total Other Purchased Services</b>	<b>\$2,095.85</b>	<b>\$2,095.59</b>		<b>\$4,191.44</b>
600 <u>Supplies</u>				
640 Books and Periodicals			500.00	500.00
<b>Total Supplies</b>			<b>\$500.00</b>	<b>\$500.00</b>
800 <u>Other Objects</u>				
810 Dues and Fees	350.00	350.00		700.00
<b>Total Other Objects</b>	<b>\$350.00</b>	<b>\$350.00</b>		<b>\$700.00</b>
<b>Total 2260 Instruction and Curriculum Development Services</b>	<b>\$240,473.46</b>	<b>\$232,533.64</b>	<b>\$118,215.60</b>	<b>\$591,222.70</b>



LEA : 111444602     Mifflin County SD

Printed 12/14/2023 10:01:26 AM

General Fund (10)

2270 Instructional Staff Professional Development Services	<u>Elementary</u>	<u>Secondary</u>	<u>Federal</u>	<u>Total</u>
100 <u>Personnel Services – Salaries</u>				
100 Personnel Services – Salaries	37,134.50	25,877.50	10,450.25	73,462.25
Total Personnel Services – Salaries	\$37,134.50	\$25,877.50	\$10,450.25	\$73,462.25
200 <u>Personnel Services – Employee Benefits</u>				
220 Social Security Contributions	2,797.04	1,946.30	799.52	5,542.86
230 PSERS Retirement Contributions	13,093.25	9,124.19	1,842.38	24,059.82
240 Tuition Reimbursement	129,759.18	104,547.63		234,306.81
250 Unemployment Compensation	11.74	13.35	20.94	46.03
260 Workers' Compensation	66.09	56.06	52.26	174.41
Total Personnel Services – Employee Benefits	\$145,727.30	\$115,687.53	\$2,715.10	\$264,129.93
300 <u>Purchased Professional and Technical Services</u>				
360 Employee Training and Development Services	4,373.21	6,497.29	15,495.28	26,365.78
Total Purchased Professional and Technical Services	\$4,373.21	\$6,497.29	\$15,495.28	\$26,365.78
500 <u>Other Purchased Services</u>				
580 Travel	2,872.25	5,349.65	12,032.10	20,254.00
Total Other Purchased Services	\$2,872.25	\$5,349.65	\$12,032.10	\$20,254.00
600 <u>Supplies</u>				
610 General Supplies	292.60	165.40		458.00
650 Supplies & Fees – Technology Related			34,713.00	34,713.00
Total Supplies	\$292.60	\$165.40	\$34,713.00	\$35,171.00
Total 2270 Instructional Staff Professional Development Services	\$190,399.86	\$153,577.37	\$75,405.73	\$419,382.96

LEA : 111444602     Mifflin County SD

Printed 12/14/2023 10:01:26 AM

General Fund (10)

2280 Nonpublic Support Services	<u>Elementary</u>	<u>Secondary</u>	<u>Federal</u>	<u>Total</u>
300 <u>Purchased Professional and Technical Services</u>				
360 Employee Training and Development Services			27,637.00	27,637.00
Total Purchased Professional and Technical Services			\$27,637.00	\$27,637.00
500 <u>Other Purchased Services</u>				
580 Travel			1,221.00	1,221.00
Total Other Purchased Services			\$1,221.00	\$1,221.00
600 <u>Supplies</u>				
610 General Supplies			6,289.04	6,289.04
Total Supplies			\$6,289.04	\$6,289.04
Total 2280 Nonpublic Support Services			\$35,147.04	\$35,147.04

LEA : 111444602     Mifflin County SD

Printed 12/14/2023 10:01:26 AM

General Fund (10)

2300 Support Services – Administration	Elementary	Secondary	Federal	Total
<b>100 Personnel Services – Salaries</b>				
100 Personnel Services – Salaries	1,042,100.83	912,336.12	7,607.30	2,457,208.17
<b>Total Personnel Services – Salaries</b>	<b>\$1,042,100.83</b>	<b>\$912,336.12</b>	<b>\$7,607.30</b>	<b>\$2,457,208.17</b>
<b>200 Personnel Services – Employee Benefits</b>				
210 Group Insurance – Contracted Provider	261,263.54	228,109.55		611,161.87
220 Social Security Contributions	79,250.59	69,280.18	582.18	186,546.43
230 PSERS Retirement Contributions	362,183.73	315,222.95	1,735.62	827,525.18
250 Unemployment Compensation	487.47	424.87	15.21	1,126.77
260 Workers' Compensation	2,173.85	1,896.63	38.04	5,133.54
291 Other Retirement Plans	11,141.60	71,926.94		92,280.07
<b>Total Personnel Services – Employee Benefits</b>	<b>\$716,500.78</b>	<b>\$686,861.12</b>	<b>\$2,371.05</b>	<b>\$1,723,773.86</b>
<b>300 Purchased Professional and Technical Services</b>				
310 Official / Administrative Services				141,108.73
329 Professional Educational Services – Other	6,143.51	3,096.00		9,239.51
330 Other Professional Services				68,623.69
390 Other Purchased Professional and Technical Services				13,999.86
<b>Total Purchased Professional and Technical Services</b>	<b>\$6,143.51</b>	<b>\$3,096.00</b>		<b>\$232,971.79</b>
<b>400 Purchased Property Services</b>				
430 Repairs and Maintenance Services				1,554.48
<b>Total Purchased Property Services</b>				<b>\$1,554.48</b>
<b>500 Other Purchased Services</b>				
520 Insurance – General				350.00
530 Communications	12,767.33	17,290.34		30,676.80
549 Other Advertising/Public Relations				22,521.31
580 Travel	1,070.99	71.10		4,828.86
<b>Total Other Purchased Services</b>	<b>\$13,838.32</b>	<b>\$17,361.44</b>		<b>\$58,376.97</b>
<b>600 Supplies</b>				
610 General Supplies	5,964.19	3,053.51		61,344.65
<b>Total Supplies</b>	<b>\$5,964.19</b>	<b>\$3,053.51</b>		<b>\$61,344.65</b>
<b>800 Other Objects</b>				
810 Dues and Fees	3,050.00	2,805.00		33,344.22
820 Claims and Judgments Against the LEA				5,000.00
<b>Total Other Objects</b>	<b>\$3,050.00</b>	<b>\$2,805.00</b>		<b>\$38,344.22</b>
<b>Total 2300 Support Services – Administration</b>	<b>\$1,787,597.63</b>	<b>\$1,625,513.19</b>	<b>\$9,978.35</b>	<b>\$4,573,574.14</b>

LEA : 111444602     Mifflin County SD

Printed 12/14/2023 10:01:26 AM

General Fund (10)

2310 Board Services

	<u>Elementary</u>	<u>Secondary</u>	<u>Federal</u>	<u>Total</u>
<b>100 <u>Personnel Services – Salaries</u></b>				
100 Personnel Services – Salaries				4,740.32
<b>Total Personnel Services – Salaries</b>				<b>\$4,740.32</b>
<b>200 <u>Personnel Services – Employee Benefits</u></b>				
220 Social Security Contributions				353.80
230 PSERS Retirement Contributions				1,671.54
250 Unemployment Compensation				1.58
260 Workers' Compensation				8.22
<b>Total Personnel Services – Employee Benefits</b>				<b>\$2,035.14</b>
<b>300 <u>Purchased Professional and Technical Services</u></b>				
330 Other Professional Services				2,825.56
390 Other Purchased Professional and Technical Services				13,999.86
<b>Total Purchased Professional and Technical Services</b>				<b>\$16,825.42</b>
<b>500 <u>Other Purchased Services</u></b>				
520 Insurance – General				350.00
530 Communications				619.13
549 Other Advertising/Public Relations				22,521.31
580 Travel				239.33
<b>Total Other Purchased Services</b>				<b>\$23,729.77</b>
<b>600 <u>Supplies</u></b>				
610 General Supplies				109.00
<b>Total Supplies</b>				<b>\$109.00</b>
<b>800 <u>Other Objects</u></b>				
810 Dues and Fees				21,205.12
820 Claims and Judgments Against the LEA				5,000.00
<b>Total Other Objects</b>				<b>\$26,205.12</b>
<b>Total 2310 Board Services</b>				<b>\$73,644.77</b>

LEA : 111444602     Mifflin County SD

Printed 12/14/2023 10:01:26 AM

General Fund (10)

2330 Tax Assessment and Collection Services	<u>Elementary</u>	<u>Secondary</u>	<u>Federal</u>	<u>Total</u>
100 <u>Personnel Services – Salaries</u>				
100 Personnel Services – Salaries				71,743.00
Total Personnel Services – Salaries				\$71,743.00
200 <u>Personnel Services – Employee Benefits</u>				
220 Social Security Contributions				5,488.34
260 Workers’ Compensation				150.42
Total Personnel Services – Employee Benefits				\$5,638.76
300 <u>Purchased Professional and Technical Services</u>				
310 Official / Administrative Services				141,108.73
Total Purchased Professional and Technical Services				\$141,108.73
600 <u>Supplies</u>				
610 General Supplies				47,202.09
Total Supplies				\$47,202.09
Total 2330 Tax Assessment and Collection Services				\$265,692.58

LEA : 111444602    Mifflin County SD

Printed 12/14/2023 10:01:26 AM

General Fund (10)				
2350 Legal and Accounting Services	<u>Elementary</u>	<u>Secondary</u>	<u>Federal</u>	<u>Total</u>
300 <u>Purchased Professional and Technical Services</u>				
330 Other Professional Services				65,798.13
Total Purchased Professional and Technical Services				\$65,798.13
Total 2350 Legal and Accounting Services				\$65,798.13

LEA : 111444602     Mifflin County SD

Printed 12/14/2023 10:01:26 AM

General Fund (10)

2360 Office of the Superintendent / Executive Director Services	<u>Elementary</u>	<u>Secondary</u>	<u>Federal</u>	<u>Total</u>
<b>100 <u>Personnel Services – Salaries</u></b>				
100 Personnel Services – Salaries				418,680.60
<b>Total Personnel Services – Salaries</b>				<b>\$418,680.60</b>
<b>200 <u>Personnel Services – Employee Benefits</u></b>				
210 Group Insurance – Contracted Provider				121,788.78
220 Social Security Contributions				31,591.34
230 PSERS Retirement Contributions				146,711.34
250 Unemployment Compensation				197.64
260 Workers' Compensation				866.38
291 Other Retirement Plans				9,211.53
<b>Total Personnel Services – Employee Benefits</b>				<b>\$310,367.01</b>
<b>400 <u>Purchased Property Services</u></b>				
430 Repairs and Maintenance Services				1,554.48
<b>Total Purchased Property Services</b>				<b>\$1,554.48</b>
<b>500 <u>Other Purchased Services</u></b>				
530 Communications	731.90	2,283.63		3,015.53
580 Travel				3,447.44
<b>Total Other Purchased Services</b>	<b>\$731.90</b>	<b>\$2,283.63</b>		<b>\$6,462.97</b>
<b>600 <u>Supplies</u></b>				
610 General Supplies				5,015.86
<b>Total Supplies</b>				<b>\$5,015.86</b>
<b>800 <u>Other Objects</u></b>				
810 Dues and Fees				6,284.10
<b>Total Other Objects</b>				<b>\$6,284.10</b>
<b>Total 2360 Office of the Superintendent / Executive Director Services</b>	<b>\$731.90</b>	<b>\$2,283.63</b>		<b>\$748,365.02</b>

LEA : 111444602     Mifflin County SD

Printed 12/14/2023 10:01:26 AM

General Fund (10)

2380 Office of the Principal Services	Elementary	Secondary	Federal	Total
<b>100 <u>Personnel Services – Salaries</u></b>				
100 Personnel Services – Salaries	1,042,100.83	912,336.12	7,607.30	1,962,044.25
<b>Total Personnel Services – Salaries</b>	<b>\$1,042,100.83</b>	<b>\$912,336.12</b>	<b>\$7,607.30</b>	<b>\$1,962,044.25</b>
<b>200 <u>Personnel Services – Employee Benefits</u></b>				
210 Group Insurance – Contracted Provider	261,263.54	228,109.55		489,373.09
220 Social Security Contributions	79,250.59	69,280.18	582.18	149,112.95
230 PSERS Retirement Contributions	362,183.73	315,222.95	1,735.62	679,142.30
250 Unemployment Compensation	487.47	424.87	15.21	927.55
260 Workers' Compensation	2,173.85	1,896.63	38.04	4,108.52
291 Other Retirement Plans	11,141.60	71,926.94		83,068.54
<b>Total Personnel Services – Employee Benefits</b>	<b>\$716,500.78</b>	<b>\$686,861.12</b>	<b>\$2,371.05</b>	<b>\$1,405,732.95</b>
<b>300 <u>Purchased Professional and Technical Services</u></b>				
329 Professional Educational Services – Other	6,143.51	3,096.00		9,239.51
<b>Total Purchased Professional and Technical Services</b>	<b>\$6,143.51</b>	<b>\$3,096.00</b>		<b>\$9,239.51</b>
<b>500 <u>Other Purchased Services</u></b>				
530 Communications	12,035.43	15,006.71		27,042.14
580 Travel	1,070.99	71.10		1,142.09
<b>Total Other Purchased Services</b>	<b>\$13,106.42</b>	<b>\$15,077.81</b>		<b>\$28,184.23</b>
<b>600 <u>Supplies</u></b>				
610 General Supplies	5,964.19	3,053.51		9,017.70
<b>Total Supplies</b>	<b>\$5,964.19</b>	<b>\$3,053.51</b>		<b>\$9,017.70</b>
<b>800 <u>Other Objects</u></b>				
810 Dues and Fees	3,050.00	2,805.00		5,855.00
<b>Total Other Objects</b>	<b>\$3,050.00</b>	<b>\$2,805.00</b>		<b>\$5,855.00</b>
<b>Total 2380 Office of the Principal Services</b>	<b>\$1,786,865.73</b>	<b>\$1,623,229.56</b>	<b>\$9,978.35</b>	<b>\$3,420,073.64</b>



LEA : 111444602     Mifflin County SD

Printed 12/14/2023 10:01:26 AM

General Fund (10)

2400 Support Services – Pupil Health	<u>Elementary</u>	<u>Secondary</u>	<u>Federal</u>	<u>Total</u>
<b>100 <u>Personnel Services – Salaries</u></b>				
100 Personnel Services – Salaries			57,280.26	500,829.19
<b>Total Personnel Services – Salaries</b>			<b>\$57,280.26</b>	<b>\$500,829.19</b>
<b>200 <u>Personnel Services – Employee Benefits</u></b>				
210 Group Insurance – Contracted Provider			47,032.85	179,542.72
220 Social Security Contributions			4,262.13	37,667.65
230 PSERS Retirement Contributions			10,373.30	160,775.13
250 Unemployment Compensation			114.65	322.44
260 Workers' Compensation			286.28	1,199.64
<b>Total Personnel Services – Employee Benefits</b>			<b>\$62,069.21</b>	<b>\$379,507.58</b>
<b>300 <u>Purchased Professional and Technical Services</u></b>				
329 Professional Educational Services – Other				7,916.59
330 Other Professional Services				7,659.13
390 Other Purchased Professional and Technical Services				720.00
<b>Total Purchased Professional and Technical Services</b>				<b>\$16,295.72</b>
<b>500 <u>Other Purchased Services</u></b>				
580 Travel				628.35
<b>Total Other Purchased Services</b>				<b>\$628.35</b>
<b>600 <u>Supplies</u></b>				
610 General Supplies			15,518.73	22,460.08
<b>Total Supplies</b>			<b>\$15,518.73</b>	<b>\$22,460.08</b>
<b>800 <u>Other Objects</u></b>				
810 Dues and Fees				520.00
<b>Total Other Objects</b>				<b>\$520.00</b>
<b>Total 2400 Support Services – Pupil Health</b>			<b>\$134,868.20</b>	<b>\$920,240.92</b>

LEA : 111444602     Mifflin County SD

Printed 12/14/2023 10:01:26 AM

General Fund (10)

2440 Nursing Services

	<u>Elementary</u>	<u>Secondary</u>	<u>Federal</u>	<u>Total</u>
<b>100 <u>Personnel Services – Salaries</u></b>				
100 Personnel Services – Salaries			57,280.26	500,829.19
<b>Total Personnel Services – Salaries</b>			<b>\$57,280.26</b>	<b>\$500,829.19</b>
<b>200 <u>Personnel Services – Employee Benefits</u></b>				
210 Group Insurance – Contracted Provider			47,032.85	179,542.72
220 Social Security Contributions			4,262.13	37,667.65
230 PSERS Retirement Contributions			10,373.30	160,775.13
250 Unemployment Compensation			114.65	322.44
260 Workers' Compensation			286.28	1,199.64
<b>Total Personnel Services – Employee Benefits</b>			<b>\$62,069.21</b>	<b>\$379,507.58</b>
<b>300 <u>Purchased Professional and Technical Services</u></b>				
329 Professional Educational Services – Other				7,916.59
330 Other Professional Services				7,659.13
390 Other Purchased Professional and Technical Services				720.00
<b>Total Purchased Professional and Technical Services</b>				<b>\$16,295.72</b>
<b>500 <u>Other Purchased Services</u></b>				
580 Travel				628.35
<b>Total Other Purchased Services</b>				<b>\$628.35</b>
<b>600 <u>Supplies</u></b>				
610 General Supplies			15,518.73	22,460.08
<b>Total Supplies</b>			<b>\$15,518.73</b>	<b>\$22,460.08</b>
<b>800 <u>Other Objects</u></b>				
810 Dues and Fees				520.00
<b>Total Other Objects</b>				<b>\$520.00</b>
<b>Total 2440 Nursing Services</b>			<b>\$134,868.20</b>	<b>\$920,240.92</b>

LEA : 111444602     Mifflin County SD

Printed 12/14/2023 10:01:26 AM

General Fund (10)

2500 Support Services – Business	<u>Elementary</u>	<u>Secondary</u>	<u>Federal</u>	<u>Total</u>
<b>100 <u>Personnel Services – Salaries</u></b>				
100 Personnel Services – Salaries				465,625.54
<b>Total Personnel Services – Salaries</b>				<b>\$465,625.54</b>
<b>200 <u>Personnel Services – Employee Benefits</u></b>				
210 Group Insurance – Contracted Provider				125,736.40
220 Social Security Contributions				34,948.68
230 PSERS Retirement Contributions				162,886.73
250 Unemployment Compensation				219.28
260 Workers' Compensation				961.95
<b>Total Personnel Services – Employee Benefits</b>				<b>\$324,753.04</b>
<b>300 <u>Purchased Professional and Technical Services</u></b>				
310 Official / Administrative Services				84,388.20
340 Technical Services				10,992.50
<b>Total Purchased Professional and Technical Services</b>				<b>\$95,380.70</b>
<b>500 <u>Other Purchased Services</u></b>				
530 Communications				13,990.20
580 Travel				121.04
<b>Total Other Purchased Services</b>				<b>\$14,111.24</b>
<b>600 <u>Supplies</u></b>				
610 General Supplies				(7,258.51)
650 Supplies & Fees – Technology Related				19,831.90
<b>Total Supplies</b>				<b>\$12,573.39</b>
<b>800 <u>Other Objects</u></b>				
810 Dues and Fees				7,135.61
<b>Total Other Objects</b>				<b>\$7,135.61</b>
<b>Total 2500 Support Services – Business</b>				<b>\$919,579.52</b>

LEA : 111444602     Mifflin County SD

Printed 12/14/2023 10:01:26 AM

General Fund (10)

2510 Fiscal Services

	<u>Elementary</u>	<u>Secondary</u>	<u>Federal</u>	<u>Total</u>
<b>100 <u>Personnel Services – Salaries</u></b>				
100 Personnel Services – Salaries				465,625.54
<b>Total Personnel Services – Salaries</b>				<b>\$465,625.54</b>
<b>200 <u>Personnel Services – Employee Benefits</u></b>				
210 Group Insurance – Contracted Provider				125,736.40
220 Social Security Contributions				34,948.68
230 PSERS Retirement Contributions				162,886.73
250 Unemployment Compensation				219.28
260 Workers' Compensation				961.95
<b>Total Personnel Services – Employee Benefits</b>				<b>\$324,753.04</b>
<b>300 <u>Purchased Professional and Technical Services</u></b>				
310 Official / Administrative Services				84,388.20
340 Technical Services				10,992.50
<b>Total Purchased Professional and Technical Services</b>				<b>\$95,380.70</b>
<b>500 <u>Other Purchased Services</u></b>				
530 Communications				13,990.20
580 Travel				121.04
<b>Total Other Purchased Services</b>				<b>\$14,111.24</b>
<b>600 <u>Supplies</u></b>				
610 General Supplies				(7,258.51)
650 Supplies & Fees – Technology Related				19,831.90
<b>Total Supplies</b>				<b>\$12,573.39</b>
<b>800 <u>Other Objects</u></b>				
810 Dues and Fees				7,135.61
<b>Total Other Objects</b>				<b>\$7,135.61</b>
<b>Total 2510 Fiscal Services</b>				<b>\$919,579.52</b>

LEA : 111444602     Mifflin County SD

Printed 12/14/2023 10:01:26 AM

General Fund (10)

2511 Supervision of Fiscal Services - Head of Component	<u>Elementary</u>	<u>Secondary</u>	<u>Federal</u>	<u>Total</u>
<b>100 <u>Personnel Services – Salaries</u></b>				
100 Personnel Services – Salaries				163,480.74
<b>Total Personnel Services – Salaries</b>				<b>\$163,480.74</b>
<b>200 <u>Personnel Services – Employee Benefits</u></b>				
210 Group Insurance – Contracted Provider				29,799.48
220 Social Security Contributions				12,450.18
230 PSERS Retirement Contributions				56,350.39
250 Unemployment Compensation				77.69
260 Workers' Compensation				338.86
<b>Total Personnel Services – Employee Benefits</b>				<b>\$99,016.60</b>
<b>500 <u>Other Purchased Services</u></b>				
580 Travel				94.84
<b>Total Other Purchased Services</b>				<b>\$94.84</b>
<b>600 <u>Supplies</u></b>				
650 Supplies & Fees – Technology Related				19,831.90
<b>Total Supplies</b>				<b>\$19,831.90</b>
<b>800 <u>Other Objects</u></b>				
810 Dues and Fees				864.29
<b>Total Other Objects</b>				<b>\$864.29</b>
<b>Total 2511 Supervision of Fiscal Services - Head of Component</b>				<b>\$283,288.37</b>

LEA : 111444602     Mifflin County SD

Printed 12/14/2023 10:01:26 AM

General Fund (10)

2514 Payroll Services

Elementary                      Secondary                      Federal                      Total

<b>100 <u>Personnel Services – Salaries</u></b>				
100 Personnel Services – Salaries				107,939.00
<b>Total Personnel Services – Salaries</b>				<b>\$107,939.00</b>
<b>200 <u>Personnel Services – Employee Benefits</u></b>				
210 Group Insurance – Contracted Provider				29,328.50
220 Social Security Contributions				8,023.59
230 PSERS Retirement Contributions				38,059.28
250 Unemployment Compensation				50.99
260 Workers' Compensation				223.18
<b>Total Personnel Services – Employee Benefits</b>				<b>\$75,685.54</b>
<b>500 <u>Other Purchased Services</u></b>				
580 Travel				26.20
<b>Total Other Purchased Services</b>				<b>\$26.20</b>
<b>Total 2514 Payroll Services</b>				<b>\$183,650.74</b>

LEA : 111444602     Mifflin County SD

Printed 12/14/2023 10:01:26 AM

General Fund (10)

2515 Financial Accounting Services	<u>Elementary</u>	<u>Secondary</u>	<u>Federal</u>	<u>Total</u>
<b>100 <u>Personnel Services – Salaries</u></b>				
100 Personnel Services – Salaries				58,387.80
<b>Total Personnel Services – Salaries</b>				<b>\$58,387.80</b>
<b>200 <u>Personnel Services – Employee Benefits</u></b>				
210 Group Insurance – Contracted Provider				31,276.92
220 Social Security Contributions				4,165.89
230 PSERS Retirement Contributions				20,587.56
250 Unemployment Compensation				28.10
260 Workers' Compensation				122.21
<b>Total Personnel Services – Employee Benefits</b>				<b>\$56,180.68</b>
<b>300 <u>Purchased Professional and Technical Services</u></b>				
310 Official / Administrative Services				84,388.20
340 Technical Services				10,992.50
<b>Total Purchased Professional and Technical Services</b>				<b>\$95,380.70</b>
<b>500 <u>Other Purchased Services</u></b>				
530 Communications				12,132.50
<b>Total Other Purchased Services</b>				<b>\$12,132.50</b>
<b>600 <u>Supplies</u></b>				
610 General Supplies				(7,404.48)
<b>Total Supplies</b>				<b>(\$7,404.48)</b>
<b>800 <u>Other Objects</u></b>				
810 Dues and Fees				213.82
<b>Total Other Objects</b>				<b>\$213.82</b>
<b>Total 2515 Financial Accounting Services</b>				<b>\$214,891.02</b>

LEA : 111444602     Mifflin County SD

Printed 12/14/2023 10:01:26 AM

General Fund (10)

2519 Other Fiscal Services	<u>Elementary</u>	<u>Secondary</u>	<u>Federal</u>	<u>Total</u>
100 <u>Personnel Services – Salaries</u>				
100 Personnel Services – Salaries				135,818.00
Total Personnel Services – Salaries				\$135,818.00
200 <u>Personnel Services – Employee Benefits</u>				
210 Group Insurance – Contracted Provider				35,331.50
220 Social Security Contributions				10,309.02
230 PSERS Retirement Contributions				47,889.50
250 Unemployment Compensation				62.50
260 Workers' Compensation				277.70
Total Personnel Services – Employee Benefits				\$93,870.22
500 <u>Other Purchased Services</u>				
530 Communications				1,857.70
Total Other Purchased Services				\$1,857.70
600 <u>Supplies</u>				
610 General Supplies				145.97
Total Supplies				\$145.97
800 <u>Other Objects</u>				
810 Dues and Fees				6,057.50
Total Other Objects				\$6,057.50
Total 2519 Other Fiscal Services				\$237,749.39



LEA : 111444602     Mifflin County SD

Printed 12/14/2023 10:01:26 AM

General Fund (10)

2600 Operation and Maintenance of Plant Services

	<u>Elementary</u>	<u>Secondary</u>	<u>Federal</u>	<u>Total</u>
<b>100 <u>Personnel Services – Salaries</u></b>				
100 Personnel Services – Salaries			258,650.92	2,180,745.83
<b>Total Personnel Services – Salaries</b>			<b>\$258,650.92</b>	<b>\$2,180,745.83</b>
<b>200 <u>Personnel Services – Employee Benefits</u></b>				
210 Group Insurance – Contracted Provider			114,298.81	893,269.72
220 Social Security Contributions			19,465.88	163,998.83
230 PSERS Retirement Contributions			45,599.91	716,981.34
250 Unemployment Compensation			517.30	1,415.96
260 Workers' Compensation			1,293.01	5,265.55
291 Other Retirement Plans				14,785.52
<b>Total Personnel Services – Employee Benefits</b>			<b>\$181,174.91</b>	<b>\$1,795,716.92</b>
<b>300 <u>Purchased Professional and Technical Services</u></b>				
330 Other Professional Services				22,207.73
350 Security / Safety Services				211,756.28
<b>Total Purchased Professional and Technical Services</b>				<b>\$233,964.01</b>
<b>400 <u>Purchased Property Services</u></b>				
410 Cleaning Services				30,419.58
420 Utility Services				103,246.92
430 Repairs and Maintenance Services				804,582.83
440 Rentals				6,276.03
450 Construction Services			880,097.52	880,097.52
<b>Total Purchased Property Services</b>			<b>\$880,097.52</b>	<b>\$1,824,622.88</b>
<b>500 <u>Other Purchased Services</u></b>				
523 General Property and Liability Insurance				246,587.56
529 Other Insurance				36,975.00
530 Communications				5,984.08
580 Travel				413.51
<b>Total Other Purchased Services</b>				<b>\$289,960.15</b>
<b>600 <u>Supplies</u></b>				
610 General Supplies	152,685.59	148,393.29	17,071.51	318,150.39
620 Energy				745,697.32
650 Supplies & Fees – Technology Related				4,712.50
<b>Total Supplies</b>	<b>\$152,685.59</b>	<b>\$148,393.29</b>	<b>\$17,071.51</b>	<b>\$1,068,560.21</b>
<b>700 <u>Property</u></b>				
752 Capital Equipment – Original and Additional				6,750.00
762 Capitalized Equipment - Replacement				103,280.91
<b>Total Property</b>				<b>\$110,030.91</b>
<b>800 <u>Other Objects</u></b>				
810 Dues and Fees				259.27
<b>Total Other Objects</b>				<b>\$259.27</b>
<b>Total 2600 Operation and Maintenance of Plant Services</b>	<b>\$152,685.59</b>	<b>\$148,393.29</b>	<b>\$1,336,994.86</b>	<b>\$7,503,860.18</b>

LEA : 111444602     Mifflin County SD

Printed 12/14/2023 10:01:26 AM

General Fund (10)

2610 Supervision of Operation and Maintenance of Plant Services	<u>Elementary</u>	<u>Secondary</u>	<u>Federal</u>	<u>Total</u>
100 <u>Personnel Services – Salaries</u>				
100 Personnel Services – Salaries			47,476.00	183,874.56
Total Personnel Services – Salaries			\$47,476.00	\$183,874.56
200 <u>Personnel Services – Employee Benefits</u>				
210 Group Insurance – Contracted Provider			28,348.47	67,442.23
220 Social Security Contributions			3,577.47	13,920.72
230 PSERS Retirement Contributions			8,369.29	56,463.46
250 Unemployment Compensation			94.90	158.79
260 Workers' Compensation			237.38	517.99
Total Personnel Services – Employee Benefits			\$40,627.51	\$138,503.19
500 <u>Other Purchased Services</u>				
580 Travel				101.88
Total Other Purchased Services				\$101.88
Total 2610 Supervision of Operation and Maintenance of Plant Services			\$88,103.51	\$322,479.63

LEA : 111444602     Mifflin County SD

Printed 12/14/2023 10:01:26 AM

General Fund (10)

2611 Supervision of Operation and Maintenance of Plant Services – Head of Component	<u>Elementary</u>	<u>Secondary</u>	<u>Federal</u>	<u>Total</u>
<b>100 <u>Personnel Services – Salaries</u></b>				
100 Personnel Services – Salaries			47,476.00	183,874.56
<b>Total Personnel Services – Salaries</b>			<b>\$47,476.00</b>	<b>\$183,874.56</b>
<b>200 <u>Personnel Services – Employee Benefits</u></b>				
210 Group Insurance – Contracted Provider			28,348.47	67,442.23
220 Social Security Contributions			3,577.47	13,920.72
230 PSERS Retirement Contributions			8,369.29	56,463.46
250 Unemployment Compensation			94.90	158.79
260 Workers' Compensation			237.38	517.99
<b>Total Personnel Services – Employee Benefits</b>			<b>\$40,627.51</b>	<b>\$138,503.19</b>
<b>500 <u>Other Purchased Services</u></b>				
580 Travel				101.88
<b>Total Other Purchased Services</b>				<b>\$101.88</b>
<b>Total 2611 Supervision of Operation and Maintenance of Plant Services – Head of Component</b>			<b>\$88,103.51</b>	<b>\$322,479.63</b>

LEA : 111444602     Mifflin County SD

Printed 12/14/2023 10:01:26 AM

<b>General Fund (10)</b>				
<b>2620 Operation of Buildings Services</b>	<b><u>Elementary</u></b>	<b><u>Secondary</u></b>	<b><u>Federal</u></b>	<b><u>Total</u></b>
<b>100 <u>Personnel Services – Salaries</u></b>				
100 Personnel Services – Salaries			211,174.92	1,984,342.52
<b>Total Personnel Services – Salaries</b>			<b>\$211,174.92</b>	<b>\$1,984,342.52</b>
<b>200 <u>Personnel Services – Employee Benefits</u></b>				
210 Group Insurance – Contracted Provider			85,950.34	825,827.49
220 Social Security Contributions			15,888.41	149,132.82
230 PSERS Retirement Contributions			37,230.62	656,931.87
250 Unemployment Compensation			422.40	1,252.04
260 Workers' Compensation			1,055.63	4,723.27
291 Other Retirement Plans				14,785.52
<b>Total Personnel Services – Employee Benefits</b>			<b>\$140,547.40</b>	<b>\$1,652,653.01</b>
<b>300 <u>Purchased Professional and Technical Services</u></b>				
330 Other Professional Services				22,207.73
<b>Total Purchased Professional and Technical Services</b>				<b>\$22,207.73</b>
<b>400 <u>Purchased Property Services</u></b>				
410 Cleaning Services				30,419.58
420 Utility Services				103,246.92
430 Repairs and Maintenance Services				804,582.83
440 Rentals				6,276.03
450 Construction Services			880,097.52	880,097.52
<b>Total Purchased Property Services</b>			<b>\$880,097.52</b>	<b>\$1,824,622.88</b>
<b>500 <u>Other Purchased Services</u></b>				
523 General Property and Liability Insurance				246,587.56
529 Other Insurance				36,975.00
530 Communications				5,984.08
580 Travel				311.63
<b>Total Other Purchased Services</b>				<b>\$289,858.27</b>
<b>600 <u>Supplies</u></b>				
610 General Supplies	152,581.55	147,824.33	17,071.51	317,477.39
620 Energy				745,697.32
<b>Total Supplies</b>	<b>\$152,581.55</b>	<b>\$147,824.33</b>	<b>\$17,071.51</b>	<b>\$1,063,174.71</b>
<b>700 <u>Property</u></b>				
752 Capital Equipment – Original and Additional				6,750.00
762 Capitalized Equipment - Replacement				103,280.91
<b>Total Property</b>				<b>\$110,030.91</b>
<b>800 <u>Other Objects</u></b>				
810 Dues and Fees				259.27
<b>Total Other Objects</b>				<b>\$259.27</b>
<b>Total 2620 Operation of Buildings Services</b>	<b>\$152,581.55</b>	<b>\$147,824.33</b>	<b>\$1,248,891.35</b>	<b>\$6,947,149.30</b>

LEA : 111444602     Mifflin County SD

Printed 12/14/2023 10:01:26 AM

General Fund (10)

2660 Safety and Security Services	Elementary	Secondary	Federal	Total
100 <u>Personnel Services – Salaries</u>				
100 Personnel Services – Salaries				12,528.75
Total Personnel Services – Salaries				\$12,528.75
200 <u>Personnel Services – Employee Benefits</u>				
220 Social Security Contributions				945.29
230 PSERS Retirement Contributions				3,586.01
250 Unemployment Compensation				5.13
260 Workers' Compensation				24.29
Total Personnel Services – Employee Benefits				\$4,560.72
300 <u>Purchased Professional and Technical Services</u>				
350 Security / Safety Services				211,756.28
Total Purchased Professional and Technical Services				\$211,756.28
600 <u>Supplies</u>				
610 General Supplies	104.04	568.96		673.00
650 Supplies & Fees – Technology Related				4,712.50
Total Supplies	\$104.04	\$568.96		\$5,385.50
Total 2660 Safety and Security Services	\$104.04	\$568.96		\$234,231.25

LEA : 111444602     Mifflin County SD

Printed 12/14/2023 10:01:26 AM

<b>General Fund (10)</b>				
<b>2700 Student Transportation Services</b>	<b><u>Elementary</u></b>	<b><u>Secondary</u></b>	<b><u>Federal</u></b>	<b><u>Total</u></b>
<b>100 <u>Personnel Services – Salaries</u></b>				
100 Personnel Services – Salaries				70,654.32
<b>Total Personnel Services – Salaries</b>				<b>\$70,654.32</b>
<b>200 <u>Personnel Services – Employee Benefits</u></b>				
210 Group Insurance – Contracted Provider				17,891.12
220 Social Security Contributions				5,327.84
230 PSERS Retirement Contributions				24,324.98
250 Unemployment Compensation				32.83
260 Workers' Compensation				144.96
<b>Total Personnel Services – Employee Benefits</b>				<b>\$47,721.73</b>
<b>300 <u>Purchased Professional and Technical Services</u></b>				
390 Other Purchased Professional and Technical Services				555.00
<b>Total Purchased Professional and Technical Services</b>				<b>\$555.00</b>
<b>500 <u>Other Purchased Services</u></b>				
513 Contracted Carriers			17,002.36	4,886,527.43
516 Student Transportation Services From the IU				22,089.32
519 Student Transportation Services From Other Sources			40,712.62	40,712.62
530 Communications				1,782.48
580 Travel				203.12
<b>Total Other Purchased Services</b>			<b>\$57,714.98</b>	<b>\$4,951,314.97</b>
<b>600 <u>Supplies</u></b>				
610 General Supplies				1,041.55
650 Supplies & Fees – Technology Related				15,075.00
<b>Total Supplies</b>				<b>\$16,116.55</b>
<b>800 <u>Other Objects</u></b>				
810 Dues and Fees				114.29
<b>Total Other Objects</b>				<b>\$114.29</b>
<b>Total 2700 Student Transportation Services</b>			<b>\$57,714.98</b>	<b>\$5,086,476.86</b>

LEA : 111444602     Mifflin County SD

Printed 12/14/2023 10:01:26 AM

<b>General Fund (10)</b>				
<b>2720 Vehicle Operation Services</b>	<u>Elementary</u>	<u>Secondary</u>	<u>Federal</u>	<u>Total</u>
<b>100 <u>Personnel Services – Salaries</u></b>				
100 Personnel Services – Salaries				70,654.32
<b>Total Personnel Services – Salaries</b>				<b>\$70,654.32</b>
<b>200 <u>Personnel Services – Employee Benefits</u></b>				
210 Group Insurance – Contracted Provider				17,891.12
220 Social Security Contributions				5,327.84
230 PSERS Retirement Contributions				24,324.98
250 Unemployment Compensation				32.83
260 Workers' Compensation				144.96
<b>Total Personnel Services – Employee Benefits</b>				<b>\$47,721.73</b>
<b>300 <u>Purchased Professional and Technical Services</u></b>				
390 Other Purchased Professional and Technical Services				555.00
<b>Total Purchased Professional and Technical Services</b>				<b>\$555.00</b>
<b>500 <u>Other Purchased Services</u></b>				
513 Contracted Carriers			17,002.36	4,109,655.90
516 Student Transportation Services From the IU				22,089.32
519 Student Transportation Services From Other Sources			40,712.62	40,712.62
530 Communications				1,782.48
580 Travel				203.12
<b>Total Other Purchased Services</b>			<b>\$57,714.98</b>	<b>\$4,174,443.44</b>
<b>600 <u>Supplies</u></b>				
610 General Supplies				1,041.55
650 Supplies & Fees – Technology Related				15,075.00
<b>Total Supplies</b>				<b>\$16,116.55</b>
<b>800 <u>Other Objects</u></b>				
810 Dues and Fees				114.29
<b>Total Other Objects</b>				<b>\$114.29</b>
<b>Total 2720 Vehicle Operation Services</b>			<b>\$57,714.98</b>	<b>\$4,309,605.33</b>

LEA : 111444602    Mifflin County SD

Printed 12/14/2023 10:01:26 AM

General Fund (10)				
2750 Nonpublic Transportation	<u>Elementary</u>	<u>Secondary</u>	<u>Federal</u>	<u>Total</u>
500 <u>Other Purchased Services</u>				
513 Contracted Carriers				776,871.53
Total Other Purchased Services				\$776,871.53
Total 2750 Nonpublic Transportation				\$776,871.53



LEA : 111444602     Mifflin County SD

Printed 12/14/2023 10:01:26 AM

General Fund (10)

2800 Support Services – Central

100 Personnel Services – Salaries

100 Personnel Services – Salaries			98,914.75	699,673.39
-----------------------------------	--	--	-----------	------------

Total Personnel Services – Salaries			\$98,914.75	\$699,673.39
-------------------------------------	--	--	-------------	--------------

200 Personnel Services – Employee Benefits

210 Group Insurance – Contracted Provider			24,812.53	198,032.09
---	--	--	-----------	------------

220 Social Security Contributions			7,318.47	52,740.77
-----------------------------------	--	--	----------	-----------

230 PSERS Retirement Contributions			17,438.62	229,264.68
------------------------------------	--	--	-----------	------------

250 Unemployment Compensation			198.07	478.68
-------------------------------	--	--	--------	--------

260 Workers' Compensation			494.37	1,738.25
---------------------------	--	--	--------	----------

Total Personnel Services – Employee Benefits			\$50,262.06	\$482,254.47
--	--	--	-------------	--------------

300 Purchased Professional and Technical Services

340 Technical Services				70,576.68
------------------------	--	--	--	-----------

360 Employee Training and Development Services				155.00
--	--	--	--	--------

Total Purchased Professional and Technical Services				\$70,731.68
---	--	--	--	-------------

400 Purchased Property Services

430 Repairs and Maintenance Services				10,821.37
--------------------------------------	--	--	--	-----------

Total Purchased Property Services				\$10,821.37
-----------------------------------	--	--	--	-------------

500 Other Purchased Services

530 Communications			56.15	6,084.60
--------------------	--	--	-------	----------

550 Printing and Binding				540.39
--------------------------	--	--	--	--------

580 Travel			467.41	6,124.03
------------	--	--	--------	----------

Total Other Purchased Services			\$523.56	\$12,749.02
--------------------------------	--	--	----------	-------------

600 Supplies

610 General Supplies			424.83	2,280.94
----------------------	--	--	--------	----------

650 Supplies & Fees – Technology Related			1,536,961.12	1,536,961.12
--	--	--	--------------	--------------

Total Supplies			\$1,537,385.95	\$1,539,242.06
----------------	--	--	----------------	----------------

700 Property

738 Technology Software Lease and Other Right-to-Use Arrangements			21,732.90	120,067.18
---	--	--	-----------	------------

752 Capital Equipment – Original and Additional				6,750.00
---	--	--	--	----------

768 Capitalized Technology Software - Replacement				42,895.48
---	--	--	--	-----------

Total Property			\$21,732.90	\$169,712.66
----------------	--	--	-------------	--------------

800 Other Objects

810 Dues and Fees			50.00	1,460.73
-------------------	--	--	-------	----------

Total Other Objects			\$50.00	\$1,460.73
---------------------	--	--	---------	------------

Total 2800 Support Services – Central			\$1,708,869.22	\$2,986,645.38
---------------------------------------	--	--	----------------	----------------

LEA : 111444602     Mifflin County SD

Printed 12/14/2023 10:01:26 AM

General Fund (10)					
2810 Planning, Research, Development and Evaluation Services		Elementary	Secondary	Federal	Total
100 <u>Personnel Services – Salaries</u>					
100 Personnel Services – Salaries				15,310.80	616,069.44
Total Personnel Services – Salaries				\$15,310.80	\$616,069.44
200 <u>Personnel Services – Employee Benefits</u>					
210 Group Insurance – Contracted Provider				2,806.57	176,026.13
220 Social Security Contributions				1,153.90	46,576.20
230 PSERS Retirement Contributions				2,699.42	214,525.48
250 Unemployment Compensation				30.62	311.23
260 Workers' Compensation				76.55	1,320.43
Total Personnel Services – Employee Benefits				\$6,767.06	\$438,759.47
300 <u>Purchased Professional and Technical Services</u>					
340 Technical Services					70,576.68
Total Purchased Professional and Technical Services					\$70,576.68
400 <u>Purchased Property Services</u>					
430 Repairs and Maintenance Services					10,821.37
Total Purchased Property Services					\$10,821.37
500 <u>Other Purchased Services</u>					
530 Communications					6,028.45
550 Printing and Binding					540.39
580 Travel					5,656.62
Total Other Purchased Services					\$12,225.46
600 <u>Supplies</u>					
610 General Supplies					1,856.11
650 Supplies & Fees – Technology Related				1,536,562.12	1,536,562.12
Total Supplies				\$1,536,562.12	\$1,538,418.23
700 <u>Property</u>					
738 Technology Software Lease and Other Right-to-Use Arrangements				21,732.90	120,067.18
752 Capital Equipment – Original and Additional					6,750.00
768 Capitalized Technology Software - Replacement					42,895.48
Total Property				\$21,732.90	\$169,712.66
800 <u>Other Objects</u>					
810 Dues and Fees					1,410.73
Total Other Objects					\$1,410.73
Total 2810 Planning, Research, Development and Evaluation Services				\$1,580,372.88	\$2,857,994.04

LEA : 111444602     Mifflin County SD

Printed 12/14/2023 10:01:26 AM

General Fund (10)

2830 Staff Services	<u>Elementary</u>	<u>Secondary</u>	<u>Federal</u>	<u>Total</u>
300 <u>Purchased Professional and Technical Services</u>				
360 Employee Training and Development Services				155.00
Total Purchased Professional and Technical Services				\$155.00
600 <u>Supplies</u>				
650 Supplies & Fees – Technology Related			399.00	399.00
Total Supplies			\$399.00	\$399.00
Total 2830 Staff Services			\$399.00	\$554.00

LEA : 111444602     Mifflin County SD

Printed 12/14/2023 10:01:26 AM

General Fund (10)

2836 Staff Development Services – Non-Instructional, Non-Certified Staff Only	<u>Elementary</u>	<u>Secondary</u>	<u>Federal</u>	<u>Total</u>
300 <u>Purchased Professional and Technical Services</u>				
360 Employee Training and Development Services				155.00
Total Purchased Professional and Technical Services				\$155.00
600 <u>Supplies</u>				
650 Supplies & Fees – Technology Related			399.00	399.00
Total Supplies			\$399.00	\$399.00
Total 2836 Staff Development Services – Non-Instructional, Non-Certified Staff Only			\$399.00	\$554.00

LEA : 111444602     Mifflin County SD

Printed 12/14/2023 10:01:26 AM

General Fund (10)

2850 State and Federal Agency Liaison Services

<u>Elementary</u>	<u>Secondary</u>	<u>Federal</u>	<u>Total</u>
-------------------	------------------	----------------	--------------

100 Personnel Services – Salaries

100 Personnel Services – Salaries		83,603.95	83,603.95
-----------------------------------	--	-----------	-----------

Total Personnel Services – Salaries

		<b>\$83,603.95</b>	<b>\$83,603.95</b>
--	--	--------------------	--------------------

200 Personnel Services – Employee Benefits

210 Group Insurance – Contracted Provider		22,005.96	22,005.96
---	--	-----------	-----------

220 Social Security Contributions		6,164.57	6,164.57
-----------------------------------	--	----------	----------

230 PSERS Retirement Contributions		14,739.20	14,739.20
------------------------------------	--	-----------	-----------

250 Unemployment Compensation		167.45	167.45
-------------------------------	--	--------	--------

260 Workers' Compensation		417.82	417.82
---------------------------	--	--------	--------

Total Personnel Services – Employee Benefits

		<b>\$43,495.00</b>	<b>\$43,495.00</b>
--	--	--------------------	--------------------

500 Other Purchased Services

530 Communications		56.15	56.15
--------------------	--	-------	-------

580 Travel		467.41	467.41
------------	--	--------	--------

Total Other Purchased Services

		<b>\$523.56</b>	<b>\$523.56</b>
--	--	-----------------	-----------------

600 Supplies

610 General Supplies		424.83	424.83
----------------------	--	--------	--------

Total Supplies

		<b>\$424.83</b>	<b>\$424.83</b>
--	--	-----------------	-----------------

800 Other Objects

810 Dues and Fees		50.00	50.00
-------------------	--	-------	-------

Total Other Objects

		<b>\$50.00</b>	<b>\$50.00</b>
--	--	----------------	----------------

Total 2850 State and Federal Agency Liaison Services

		<b>\$128,097.34</b>	<b>\$128,097.34</b>
--	--	---------------------	---------------------

LEA : 111444602     Mifflin County SD

Printed 12/14/2023 10:01:32 AM

General Fund (10)

3000 Operation of Non-Instructional Services		<u>Total</u>
100 <u>Personnel Services – Salaries</u>		
100 Personnel Services – Salaries	496,347.50	
<b>Total Personnel Services – Salaries</b>	<b>\$496,347.50</b>	
200 <u>Personnel Services – Employee Benefits</u>		
210 Group Insurance – Contracted Provider	28,211.70	
220 Social Security Contributions	37,374.12	
230 PSERS Retirement Contributions	169,742.37	
250 Unemployment Compensation	699.32	
260 Workers' Compensation	1,910.99	
<b>Total Personnel Services – Employee Benefits</b>	<b>\$237,938.50</b>	
300 <u>Purchased Professional and Technical Services</u>		
390 Other Purchased Professional and Technical Services	117,963.05	
<b>Total Purchased Professional and Technical Services</b>	<b>\$117,963.05</b>	
500 <u>Other Purchased Services</u>		
510 Student Transportation Services	199,974.50	
530 Communications	5,301.32	
580 Travel	12,746.25	
591 Services Purchased Locally	45,447.37	
<b>Total Other Purchased Services</b>	<b>\$263,469.44</b>	
600 <u>Supplies</u>		
610 General Supplies	180,817.20	
<b>Total Supplies</b>	<b>\$180,817.20</b>	
700 <u>Property</u>		
762 Capitalized Equipment - Replacement	21,695.00	
<b>Total Property</b>	<b>\$21,695.00</b>	
800 <u>Other Objects</u>		
810 Dues and Fees	16,868.12	
860 Grants To Municipal and Community Service Organizations	1,769.34	
<b>Total Other Objects</b>	<b>\$18,637.46</b>	
<b>Total 3000 Operation of Non-Instructional Services</b>	<b>\$1,336,868.15</b>	

LEA : 111444602     Mifflin County SD

Printed 12/14/2023 10:01:32 AM

General Fund (10)

3200 Student Activities

	<u>Elementary</u>	<u>Secondary</u>	<u>Federal</u>	<u>Total</u>
<b>100 <u>Personnel Services – Salaries</u></b>				
100 Personnel Services – Salaries				484,867.50
<b>Total Personnel Services – Salaries</b>				<b>\$484,867.50</b>
<b>200 <u>Personnel Services – Employee Benefits</u></b>				
210 Group Insurance – Contracted Provider				28,211.70
220 Social Security Contributions				36,505.92
230 PSERS Retirement Contributions				167,718.46
250 Unemployment Compensation				676.30
260 Workers' Compensation				1,853.53
<b>Total Personnel Services – Employee Benefits</b>				<b>\$234,965.91</b>
<b>300 <u>Purchased Professional and Technical Services</u></b>				
390 Other Purchased Professional and Technical Services				117,963.05
<b>Total Purchased Professional and Technical Services</b>				<b>\$117,963.05</b>
<b>500 <u>Other Purchased Services</u></b>				
510 Student Transportation Services				199,974.50
530 Communications				5,301.32
580 Travel				12,746.25
591 Services Purchased Locally				45,447.37
<b>Total Other Purchased Services</b>				<b>\$263,469.44</b>
<b>600 <u>Supplies</u></b>				
610 General Supplies				163,454.13
<b>Total Supplies</b>				<b>\$163,454.13</b>
<b>700 <u>Property</u></b>				
762 Capitalized Equipment - Replacement				21,695.00
<b>Total Property</b>				<b>\$21,695.00</b>
<b>800 <u>Other Objects</u></b>				
810 Dues and Fees				16,868.12
<b>Total Other Objects</b>				<b>\$16,868.12</b>
<b>Total 3200 Student Activities</b>				<b>\$1,303,283.15</b>

LEA : 111444602     Mifflin County SD

Printed 12/14/2023 10:01:32 AM

General Fund (10)

3300 Community Services

	<u>Elementary</u>	<u>Secondary</u>	<u>Federal</u>	<u>Total</u>
<b>100 <u>Personnel Services – Salaries</u></b>				
100 Personnel Services – Salaries			11,480.00	11,480.00
<b>Total Personnel Services – Salaries</b>			<b>\$11,480.00</b>	<b>\$11,480.00</b>
<b>200 <u>Personnel Services – Employee Benefits</u></b>				
220 Social Security Contributions			868.20	868.20
230 PSERS Retirement Contributions			2,023.91	2,023.91
250 Unemployment Compensation			23.02	23.02
260 Workers' Compensation			57.46	57.46
<b>Total Personnel Services – Employee Benefits</b>			<b>\$2,972.59</b>	<b>\$2,972.59</b>
<b>600 <u>Supplies</u></b>				
610 General Supplies			17,363.07	17,363.07
<b>Total Supplies</b>			<b>\$17,363.07</b>	<b>\$17,363.07</b>
<b>800 <u>Other Objects</u></b>				
860 Grants To Municipal and Community Service Organizations				1,769.34
<b>Total Other Objects</b>				<b>\$1,769.34</b>
<b>Total 3300 Community Services</b>			<b>\$31,815.66</b>	<b>\$33,585.00</b>



LEA : 111444602     Mifflin County SD

Printed 12/14/2023 10:01:35 AM

General Fund (10)

4000 Facilities Acquisition, Construction and Improvement Services	<u>Total</u>
300 <u>Purchased Professional and Technical Services</u>	
330 Other Professional Services	462,600.89
Total Purchased Professional and Technical Services	\$462,600.89
Total 4000 Facilities Acquisition, Construction and Improvement Services	\$462,600.89

LEA : 111444602     Mifflin County SD

Printed 12/14/2023 10:01:35 AM

General Fund (10)

4400 Architecture and Engineering Services / Educational Specifications – Improvements	<u>Elementary</u>	<u>Secondary</u>	<u>Federal</u>	<u>Total</u>
300 <u>Purchased Professional and Technical Services</u>				
330 Other Professional Services				462,600.89
Total Purchased Professional and Technical Services				\$462,600.89
Total 4400 Architecture and Engineering Services / Educational Specifications – Improvements				\$462,600.89

LEA : 111444602     Mifflin County SD

Printed 12/14/2023 10:01:42 AM

General Fund (10)

5000 Other Expenditures and Financing Uses

Total

800 Other Objects

830 Interest	2,988,694.56
880 Refunds of Prior Years' Receipts	4,809.67

<b>Total Other Objects</b>	<b>\$2,993,504.23</b>
----------------------------	-----------------------

900 Other Uses of Funds

910 Redemption of Principal	5,683,570.22
939 Other Fund Transfers	1,000,000.00
940 Transfers To Component Units	460,576.68

<b>Total Other Uses of Funds</b>	<b>\$7,144,146.90</b>
----------------------------------	-----------------------

<b>Total 5000 Other Expenditures and Financing Uses</b>	<b>\$10,137,651.13</b>
---	------------------------

LEA : 111444602     Mifflin County SD

Printed 12/14/2023 10:01:42 AM

General Fund (10)

5100 Debt Service / Other Expenditures and Financing Uses	<u>Elementary</u>	<u>Secondary</u>	<u>Federal</u>	<u>Total</u>
800 <u>Other Objects</u>				
830 Interest				2,988,694.56
880 Refunds of Prior Years' Receipts				4,809.67
Total Other Objects				\$2,993,504.23
900 <u>Other Uses of Funds</u>				
910 Redemption of Principal				5,683,570.22
Total Other Uses of Funds				\$5,683,570.22
Total 5100 Debt Service / Other Expenditures and Financing Uses				\$8,677,074.45

LEA : 111444602     Mifflin County SD

Printed 12/14/2023 10:01:42 AM

General Fund (10)				
5110 Debt Service	<u>Elementary</u>	<u>Secondary</u>	<u>Federal</u>	<u>Total</u>
800 <u>Other Objects</u>				
830 Interest				2,969,438.78
Total Other Objects				\$2,969,438.78
900 <u>Other Uses of Funds</u>				
910 Redemption of Principal				5,325,000.00
Total Other Uses of Funds				\$5,325,000.00
Total 5110 Debt Service				\$8,294,438.78

LEA : 111444602    Mifflin County SD

Printed 12/14/2023 10:01:42 AM

General Fund (10)

5130 Refund of Prior Year Revenues / Receipts	<u>Elementary</u>	<u>Secondary</u>	<u>Federal</u>	<u>Total</u>
800 <u>Other Objects</u>				
880 Refunds of Prior Years' Receipts				4,809.67
Total Other Objects				\$4,809.67
Total 5130 Refund of Prior Year Revenues / Receipts				\$4,809.67

LEA : 111444602    Mifflin County SD

Printed 12/14/2023 10:01:42 AM

General Fund (10)				
5140 Leases and Other Right-to-Use Arrangements	<u>Elementary</u>	<u>Secondary</u>	<u>Federal</u>	<u>Total</u>
800 <u>Other Objects</u>				
830 Interest				19,255.78
Total Other Objects				\$19,255.78
900 <u>Other Uses of Funds</u>				
910 Redemption of Principal				358,570.22
Total Other Uses of Funds				\$358,570.22
Total 5140 Leases and Other Right-to-Use Arrangements				\$377,826.00

LEA : 111444602    Mifflin County SD

Printed 12/14/2023 10:01:42 AM

General Fund (10)				
5200 Interfund Transfers – Out	<u>Elementary</u>	<u>Secondary</u>	<u>Federal</u>	<u>Total</u>
900 <u>Other Uses of Funds</u>				
939 Other Fund Transfers				1,000,000.00
Total Other Uses of Funds				\$1,000,000.00
Total 5200 Interfund Transfers – Out				\$1,000,000.00



LEA : 111444602    Mifflin County SD

Printed 12/14/2023 10:01:42 AM

General Fund (10)

5230 Capital Projects Fund Transfers	<u>Elementary</u>	<u>Secondary</u>	<u>Federal</u>	<u>Total</u>
900 <u>Other Uses of Funds</u>				
939 Other Fund Transfers				1,000,000.00
Total Other Uses of Funds				\$1,000,000.00
Total 5230 Capital Projects Fund Transfers				\$1,000,000.00

LEA : 111444602    Mifflin County SD

Printed 12/14/2023 10:01:42 AM

General Fund (10)				
5300 Transfers Out to Component Units/Primary Governments	<u>Elementary</u>	<u>Secondary</u>	<u>Federal</u>	<u>Total</u>
900 <u>Other Uses of Funds</u>				
940 Transfers To Component Units				460,576.68
Total Other Uses of Funds				\$460,576.68
Total 5300 Transfers Out to Component Units/Primary Governments				\$460,576.68

LEA : 111444602    Mifflin County SD

Printed 12/14/2023 10:01:42 AM

General Fund (10)				
5310 Transfers OUT To Component Units	<u>Elementary</u>	<u>Secondary</u>	<u>Federal</u>	<u>Total</u>
900 <u>Other Uses of Funds</u>				
940 Transfers To Component Units				460,576.68
Total Other Uses of Funds				\$460,576.68
Total 5310 Transfers OUT To Component Units				\$460,576.68

LEA : 111444602     Mifflin County SD

Printed 12/14/2023 10:01:38 AM

Other Capital Projects Fund (39)

4000 Facilities Acquisition, Construction and Improvement Services

Total

400 Purchased Property Services

450 Construction Services	418,145.00
---------------------------	------------

Total Purchased Property Services	\$418,145.00
-----------------------------------	--------------

Total 4000 Facilities Acquisition, Construction and Improvement Services	\$418,145.00
--	--------------

LEA : 111444602    Mifflin County SD

Printed 12/14/2023 10:01:38 AM

Other Capital Projects Fund (39)				
4600 Existing Building Improvement Services	<u>Elementary</u>	<u>Secondary</u>	<u>Federal</u>	<u>Total</u>
400 <u>Purchased Property Services</u>				
450 Construction Services				418,145.00
Total Purchased Property Services				\$418,145.00
Total 4600 Existing Building Improvement Services				\$418,145.00

LEA : 111444602     Mifflin County SD

Printed 12/14/2023 10:01:45 AM

Other Capital Projects Fund (39)

5000 Other Expenditures and Financing Uses

Total

800 Other Objects

830 Interest	62,562.50
--------------	-----------

Total Other Objects

**\$62,562.50**

900 Other Uses of Funds

910 Redemption of Principal	142,186.00
-----------------------------	------------

939 Other Fund Transfers	460,576.68
--------------------------	------------

Total Other Uses of Funds

**\$602,762.68**

Total 5000 Other Expenditures and Financing Uses

**\$665,325.18**

LEA : 111444602     Mifflin County SD

Printed 12/14/2023 10:01:45 AM

Other Capital Projects Fund (39)

5100 Debt Service / Other Expenditures and Financing Uses	<u>Elementary</u>	<u>Secondary</u>	<u>Federal</u>	<u>Total</u>
800 <u>Other Objects</u>				
830 Interest				62,562.50
Total Other Objects				\$62,562.50
900 <u>Other Uses of Funds</u>				
910 Redemption of Principal				142,186.00
Total Other Uses of Funds				\$142,186.00
Total 5100 Debt Service / Other Expenditures and Financing Uses				\$204,748.50

LEA : 111444602     Mifflin County SD

Printed 12/14/2023 10:01:45 AM

Other Capital Projects Fund (39)

5110 Debt Service	<u>Elementary</u>	<u>Secondary</u>	<u>Federal</u>	<u>Total</u>
800 <u>Other Objects</u>				
830 Interest				62,562.50
Total Other Objects				\$62,562.50
900 <u>Other Uses of Funds</u>				
910 Redemption of Principal				142,186.00
Total Other Uses of Funds				\$142,186.00
Total 5110 Debt Service				\$204,748.50



LEA : 111444602    Mifflin County SD

Printed 12/14/2023 10:01:45 AM

Other Capital Projects Fund (39)				
5200 Interfund Transfers – Out	<u>Elementary</u>	<u>Secondary</u>	<u>Federal</u>	<u>Total</u>
900 <u>Other Uses of Funds</u>				
939 Other Fund Transfers				460,576.68
Total Other Uses of Funds				\$460,576.68
Total 5200 Interfund Transfers – Out				\$460,576.68

LEA : 111444602     Mifflin County SD

Printed 12/14/2023 10:01:45 AM

Other Capital Projects Fund (39)

5210 General Fund Transfers	<u>Elementary</u>	<u>Secondary</u>	<u>Federal</u>	<u>Total</u>
900 <u>Other Uses of Funds</u>				
939 Other Fund Transfers				460,576.68
Total Other Uses of Funds				\$460,576.68
Total 5210 General Fund Transfers				\$460,576.68

LEA : 111444602     Mifflin County SD

Printed 12/14/2023 10:01:48 AM

	<u>General Fund(10)</u>	<u>Student Sponsored Activity Fund(21)</u>	<u>Public Purpose Trust(27)</u>	<u>Other Compt Approved (28)</u>	<u>Athletic / Activity(29)</u>
<b>1000 <u>Instruction</u></b>					
1100 Regular Programs - Elementary / Secondary	33,283,241.89				
1200 Special Programs - Elementary / Secondary	13,748,642.89				
1300 Vocational Education	4,062,132.38				
1400 Other Instructional Programs - Elementary / Secondary	1,274,356.19				
1500 Nonpublic School Programs	102,917.04				
<b>Total Instruction</b>	<b>\$52,471,290.39</b>				
<b>2000 <u>Support Services</u></b>					
2100 Support Services - Students	2,640,921.62				
2200 Support Services - Instructional Staff	1,676,611.69				
2300 Support Services - Administration	4,573,574.14				
2400 Support Services - Pupil Health	920,240.92				
2500 Support Services - Business	919,579.52				
2600 Operation and Maintenance of Plant Services	7,503,860.18				
2700 Student Transportation Services	5,086,476.86				
2800 Support Services - Central	2,986,645.38				
<b>Total Support Services</b>	<b>\$26,307,910.31</b>				
<b>3000 <u>Operation of Non-Instructional Services</u></b>					
3200 Student Activities	1,303,283.15				
3300 Community Services	33,585.00				
<b>Total Operation of Non-Instructional Services</b>	<b>\$1,336,868.15</b>				
<b>4000 <u>Facilities Acquisition, Construction and Improvement Services</u></b>					
4400 Architecture and Engineering Services / Educational Specifications - Improvements	462,600.89				
4600 Existing Building Improvement Services					
<b>Total Facilities Acquisition, Construction and Improvement Services</b>	<b>\$462,600.89</b>				
<b>5000 <u>Other Expenditures and Financing Uses</u></b>					
5100 Debt Service / Other Expenditures and Financing Uses	8,677,074.45				
5200 Interfund Transfers - Out	1,000,000.00				
5300 Transfers Out to Component Units/Primary Governments	460,576.68				
<b>Total Other Expenditures and Financing Uses</b>	<b>\$10,137,651.13</b>				
<b>TOTAL ACTUAL EXPENDITURES &amp; OTHER FINANCING USES</b>	<b>\$90,716,320.87</b>				

LEA : 111444602     Mifflin County SD

Printed 12/14/2023 10:01:48 AM

	<u>Capital Reserve (690.</u> <u>1850)(31)</u>	<u>Capital Reserve (1431)(32)</u>	<u>Other Capital Projects</u> <u>Fund(39)</u>	<u>Debt Service(40)</u>	<u>Permanent(90)</u>
<b>1000 <u>Instruction</u></b>					
1100 Regular Programs - Elementary / Secondary					
1200 Special Programs - Elementary / Secondary					
1300 Vocational Education					
1400 Other Instructional Programs - Elementary / Secondary					
1500 Nonpublic School Programs					
<b>Total Instruction</b>					
<b>2000 <u>Support Services</u></b>					
2100 Support Services - Students					
2200 Support Services - Instructional Staff					
2300 Support Services - Administration					
2400 Support Services - Pupil Health					
2500 Support Services - Business					
2600 Operation and Maintenance of Plant Services					
2700 Student Transportation Services					
2800 Support Services - Central					
<b>Total Support Services</b>					
<b>3000 <u>Operation of Non-Instructional Services</u></b>					
3200 Student Activities					
3300 Community Services					
<b>Total Operation of Non-Instructional Services</b>					
<b>4000 <u>Facilities Acquisition, Construction and Improvement Services</u></b>					
4400 Architecture and Engineering Services / Educational Specifications - Improvements					
4600 Existing Building Improvement Services			418,145.00		
<b>Total Facilities Acquisition, Construction and Improvement Services</b>			<b>\$418,145.00</b>		
<b>5000 <u>Other Expenditures and Financing Uses</u></b>					
5100 Debt Service / Other Expenditures and Financing Uses			204,748.50		
5200 Interfund Transfers - Out			460,576.68		
5300 Transfers Out to Component Units/Primary Governments					
<b>Total Other Expenditures and Financing Uses</b>			<b>\$665,325.18</b>		
<b>TOTAL ACTUAL EXPENDITURES &amp; OTHER FINANCING USES</b>			<b>\$1,083,470.18</b>		

LEA : 111444602     Mifflin County SD

Printed 12/14/2023 10:01:48 AM

	<u>Total</u>
<b>1000 <u>Instruction</u></b>	
1100 Regular Programs - Elementary / Secondary	33,283,241.89
1200 Special Programs - Elementary / Secondary	13,748,642.89
1300 Vocational Education	4,062,132.38
1400 Other Instructional Programs - Elementary / Secondary	1,274,356.19
1500 Nonpublic School Programs	102,917.04
<b>Total Instruction</b>	<b>\$52,471,290.39</b>
<b>2000 <u>Support Services</u></b>	
2100 Support Services - Students	2,640,921.62
2200 Support Services - Instructional Staff	1,676,611.69
2300 Support Services - Administration	4,573,574.14
2400 Support Services - Pupil Health	920,240.92
2500 Support Services - Business	919,579.52
2600 Operation and Maintenance of Plant Services	7,503,860.18
2700 Student Transportation Services	5,086,476.86
2800 Support Services - Central	2,986,645.38
<b>Total Support Services</b>	<b>\$26,307,910.31</b>
<b>3000 <u>Operation of Non-Instructional Services</u></b>	
3200 Student Activities	1,303,283.15
3300 Community Services	33,585.00
<b>Total Operation of Non-Instructional Services</b>	<b>\$1,336,868.15</b>
<b>4000 <u>Facilities Acquisition, Construction and Improvement Services</u></b>	
4400 Architecture and Engineering Services / Educational Specifications - Improvements	462,600.89
4600 Existing Building Improvement Services	418,145.00
<b>Total Facilities Acquisition, Construction and Improvement Services</b>	<b>\$880,745.89</b>
<b>5000 <u>Other Expenditures and Financing Uses</u></b>	
5100 Debt Service / Other Expenditures and Financing Uses	8,881,822.95
5200 Interfund Transfers - Out	1,460,576.68
5300 Transfers Out to Component Units/Primary Governments	460,576.68
<b>Total Other Expenditures and Financing Uses</b>	<b>\$10,802,976.31</b>
<b>TOTAL ACTUAL EXPENDITURES &amp; OTHER FINANCING USES</b>	<b>\$91,799,791.05</b>

LEA : 111444602     Mifflin County SD

Printed 12/14/2023 10:02:02 AM

PSERS Salary Data (Salary Data should relate to the General Fund only)

Amount	Description	Amount
	Total Salary Base for salaries subject to PSERS withholding	32,789,032.12
	Total Federally Funded salaries subject to PSERS withholding	5,803,065.43

Title I Expenditure Data

Amount	Description	Amount
	Expenditures Funded with Current Title I Funds	1,698,703.96
	Expenditures Funded with Carry over Title I Funds	699,732.88
Total	Title I Expenditure Data	\$2,398,436.84

Title IV Revenue Data

Amount	Description	Amount
	Revenue from Title IV-A-1: Student Support and Academic Enrichment Grants	162,699.98
	Revenue from Title IV-B: 21st Century Community Learning Centers	

Title V Revenue Data

Amount	Description	Amount
	Revenue from Title V-B-2: Rural and Low-Income School Programs	39,018.00
	Revenue from Title V-B-1: Small Rural School Achievement (Directly from the Federal Govt)	

1 .	<b><u>Current Special Education Expenditures within Function 1000</u></b> See list of exclusions in the note below.	17,109,026.04
2 .	<b><u>Current Special Education Expenditures within Function 2000</u></b> See list of exclusions in the note below.	6,324,309.24
2A.	<b><u>Current Special Education Expenditures within Sub-Function 2100</u></b> This data should also be included in line 2 above. See list of exclusions in the note below.	1,249,733.34
2B.	<b><u>Current Special Education Expenditures within Sub-Function 2200</u></b> This data should also be included in line 2 above. See list of exclusions in the note below.	703,704.55
2C.	<b><u>Current Special Education Expenditures within Sub-Function 2700</u></b> This data should also be included in line 2 above. See list of exclusions in the note below.	757,175.33
3.	<b><u>Current Special Education Expenditures within Sub-Function 3100</u></b> See list of exclusions in the note below.	
4.	<b><u>Current Special Education Expenditures within Sub-Function 3200</u></b> See list of exclusions in the note below.	158,050.88

**Note:** The Current Special Education Expenditure amounts for each line should be calculated as follows:

- \* Include the total expenditures for special education costs from all governmental funds and the food service fund 51 for the function/sub-function requested
- \* Exclude data from sub-functions: 1243,1450,1500,1600,1807,2280,2450,2750,2990
- \* Exclude data from objects: 322,511,512,516,561,562,564,566,592,593,594,595,596,597,700,830,899

Benefits for Staff Relative to Collective Bargaining Agreements				
	OBJECT	COVERED	NOT COVERED	TOTAL
10 General Fund	No Self Insurance data to report			
	211 Medical Insurance	7,801,572.89	835,271.04	8,636,843.93
	212 Dental Insurance	290,841.44	29,710.33	320,551.77
	215 Eye Care Insurance	46,156.20	4,020.80	50,177.00
	216 Prescription Insurance			
	271 Self-Insurance Medical Benefits			
	272 Self-Insurance Dental Benefits			
	275 Self-Insurance Eye Care Benefits			
	276 Self-Insurance Prescription Benefits			
	FUND TOTAL	\$8,138,570.53	\$869,002.17	\$9,007,572.70
50 Enterprise Fund	No Self Insurance data to report			
	211 Medical Insurance	207,728.45		207,728.45
	212 Dental Insurance	8,213.28		8,213.28
	215 Eye Care Insurance	1,946.50		1,946.50
	216 Prescription Insurance			
	271 Self-Insurance Medical Benefits			
	272 Self-Insurance Dental Benefits			
	275 Self-Insurance Eye Care Benefits			
	276 Self-Insurance Prescription Benefits			
	FUND TOTAL	\$217,888.23		\$217,888.23
60 Internal Service Fund	No Self Insurance data to report			
	211 Medical Insurance			
	212 Dental Insurance			
	215 Eye Care Insurance			
	216 Prescription Insurance			
	271 Self-Insurance Medical Benefits			
	272 Self-Insurance Dental Benefits			
	275 Self-Insurance Eye Care Benefits			
	276 Self-Insurance Prescription Benefits			
	FUND TOTAL			
Total of All Funds		\$8,356,458.76	\$869,002.17	\$9,225,460.93



LEA : 111444602 Mifflin County SD

Printed 12/14/2023 10:02:16 AM

Function	Special Education (Prior Year)	Nonspecial Education (Prior Year)	Total (Prior Year)	Special Education (Current Year)	Nonspecial Education (Current Year)	Total (Current Year)
2120 Guidance Services	243,279.85	1,221,150.80	1,464,430.65	276,419.15	1,289,040.34	1,565,459.49
2140 Psychological Services	563,851.00	187,950.00	751,801.00	532,008.31	177,336.10	709,344.41
2150 Speech Pathology and Audiology Services						
2160 Social Work Services	42,298.50	212,318.67	254,617.17	62,381.88	290,908.77	353,290.65
2260 Instruction and Curriculum Development Services	67,573.16	339,185.56	406,758.72	104,394.44	486,828.26	591,222.70
2350 Legal and Accounting Services	2,596.00	32,588.00	35,184.00	5,310.00	60,488.13	65,798.13
2420 Medical Services						
2440 Nursing Services	144,871.39	727,186.48	872,057.87	162,490.45	757,750.47	920,240.92
2700 Student Transportation Services	805,516.20	4,043,313.75	4,848,829.95	894,238.20	4,170,149.34	5,064,387.54
Total	\$1,869,986.10	\$6,763,693.26	\$8,633,679.36	\$2,037,242.43	\$7,232,501.41	\$9,269,743.84

LEA : 111444602     Mifflin County SD

(PRINCIPAL AMOUNTS ONLY)								
<u>GOVERNMENTAL FUNDS/ ACTIVITIES</u>	Short-Term Borrowing	General Obligation Bonds/Notes	Authority Building Obligations	Leases, Other Right to Use Arrangements	Extended Term Financing Agreements	Other Long Term Debt/Liabilities	OPEB, Comp Abs, Net Pension Liab	Total
1. Debt at Beginning of Fiscal Year		74,730,000.00				6,686,101.00	83,867,839.00	165,283,940.00
2. Additional Debt Incurred During Year				1,050,171.79			8,748,389.00	9,798,560.79
3. Retirements and Repayments		5,325,000.00		358,570.22		766,535.00	1,992,851.00	8,442,956.22
4. Debt at End of Fiscal Year		69,405,000.00		691,601.57		5,919,566.00	90,623,377.00	166,639,544.57
5. Accreted Interest at End Of Fiscal Year								
6. Total Debt and Accreted Interest		69,405,000.00		691,601.57		5,919,566.00	90,623,377.00	166,639,544.57
7. Current Portion P&I - Due within 1 year		8,294,844.00		275,191.70		827,891.00		9,397,926.70
8. Interest Paid during current fiscal year		2,969,438.78		19,255.78				2,988,694.56

(PRINCIPAL AMOUNTS ONLY)								
PROPRIETARY FUNDS	Short-Term Borrowing	General Obligation Bonds/Notes	Authority Building Obligations	Leases, Other Right to Use Arrangements	Extended Term Financing Agreements	Other Long Term Debt/Liabilities	OPEB, Comp Abs, Net Pension Liab	Total
1. Debt at Beginning of Fiscal Year							2,439,311.84	2,439,311.84
2. Additional Debt Incurred During Year							178,315.00	178,315.00
3. Retirements and Repayments							58,343.00	58,343.00
4. Debt at End of Fiscal Year							2,559,283.84	2,559,283.84
5. Accreted Interest at End Of Fiscal Year								
6. Total Debt and Accreted Interest							2,559,283.84	2,559,283.84
7. Current Portion P&I - Due within 1 year								
8. Interest Paid during current fiscal year								

LEA : 111444602    Mifflin County SD

Printed 12/14/2023 10:02:20 AM

Total Principal and Interest Payments Made by Your School - All Funds

Function	Fund		Principal (910)	Principal (920)	Interest (830)	Total (Principal +Interest)	Misc Other Uses (990)
5110	10	General Fund	5,325,000.00		2,969,438.78	8,294,438.78	
5110	20	Special Revenue Funds					
5110	30	Capital Projects Funds	142,186.00		62,562.50	204,748.50	
5110	40	Debt Service Fund					
5110	90	Permanent Fund					
5120	10	General Fund					
5120	20	Special Revenue Funds					
5120	30	Capital Projects Funds					
5120	40	Debt Service Fund					
5140	10	General Fund	358,570.22		19,255.78	377,826.00	
5140	20	Special Revenue Funds					
5140	30	Capital Projects Funds					
5140	40	Debt Service Fund					
5140	90	Permanent Fund					
Total Debt Payments - Governmental Funds			\$5,825,756.22		\$3,051,257.06	\$8,877,013.28	

Function	Fund		Principal (910)	Principal (920)	Interest (830)	Total (Principal +Interest)
5110	50	Enterprise Fund				
5110	60	Internal Service Fund				
5120	50	Enterprise Fund				
5120	60	Internal Service Fund				
5140	50	Enterprise Fund				
5140	60	Internal Service Fund				
Total Debt Payments - Proprietary Funds						

LEA : 111444602     Mifflin County SD

Printed 12/14/2023 10:02:20 AM

**Debt Details**  
**Governmental Funds/ Activities**

Debt Category	Debt Issue Date (MM/YYYY)	Debt at Beginning of Fiscal Year	Principal Amounts Only			Current Portion Due Within One Year (Principal and Interest)	Interest Paid During Fiscal Year
			Additions	Reductions / Repayments	Debt at End of Fiscal Year		
General Obligation Bonds/Notes – CIB	03/2020	13,625,000.00		1,155,000.00	12,470,000.00	1,675,560.00	461,885.00
General Obligation Bonds/Notes – CIB	05/2019	8,190,000.00		5,000.00	8,185,000.00	331,905.00	327,005.00
General Obligation Bonds/Notes – CIB	06/2019	7,020,000.00		505,000.00	6,515,000.00	676,468.00	176,967.50
General Obligation Bonds/Notes – CIB	04/2018	9,965,000.00		10,000.00	9,955,000.00	336,611.00	326,856.28
General Obligation Bonds/Notes – CIB	12/2016	18,275,000.00		1,725,000.00	16,550,000.00	2,587,375.00	863,125.00
General Obligation Bonds/Notes – CIB	03/2016	17,655,000.00		1,925,000.00	15,730,000.00	2,686,925.00	813,600.00
Leases and Other Right to Use Arrangements			1,050,171.79	358,570.22	691,601.57	275,191.70	19,255.78
Other Long Term Debt/Liabilities		6,686,101.00		766,535.00	5,919,566.00	827,891.00	
Other Post-Employment Benefits (OPEB)		9,273,956.00		1,976,271.00	7,297,685.00		
Compensated Absences		2,029,875.00		16,580.00	2,013,295.00		
Net Pension Liability		72,564,008.00	8,748,389.00		81,312,397.00		
<b>Totals for Debt Entered:</b>		<b>\$165,283,940.00</b>	<b>\$9,798,560.79</b>	<b>\$8,442,956.22</b>	<b>\$166,639,544.57</b>	<b>\$9,397,926.70</b>	<b>\$2,988,694.56</b>

**Bond Details**  
**Proprietary Funds**

Debt Category	Debt Issue Date (MM/YYYY)	Debt at Beginning of Fiscal Year	Principal Amounts Only			Current Portion Due Within One Year (Principal and Interest)	Interest Paid During Fiscal Year
			Additions	Reductions / Repayments	Debt at End of Fiscal Year		
Other Post-Employment Benefits (OPEB)		196,272.85		52,618.00	143,654.85		
Compensated Absences		60,857.46		5,725.00	55,132.46		
Net Pension Liability		2,182,181.53	178,315.00		2,360,496.53		
<b>Totals for Debt Entered:</b>		<b>\$2,439,311.84</b>	<b>\$178,315.00</b>	<b>\$58,343.00</b>	<b>\$2,559,283.84</b>		

LEA : 111444602     Mifflin County SD

Printed 12/14/2023 10:02:22 AM

**General Fund (10)**

Section 1: Tuition/Purchased Services as Reported within Expenditure Detail	Amount
Tuition Reported in General Fund Expenditures 1000-560	7,202,718.89
Purchased Services in General Fund Expenditures 1000-594 and 1000-597	420.89
<b>Section 1 Total</b>	<b>\$7,203,139.78</b>

Section 2: Tuition Paid to Institution Types During Fiscal Year	Tuition Paid For Nonspecial Education	Tuition Paid For Special Education	Total
1    1306 Institutions	12,430.62	2,004.17	14,434.79
2    Institutionalized Children's Programs	23,400.00	420.89	23,820.89
3    Juveniles Incarcerated in Adult Facilities	4,638.33		4,638.33
4    Residential Treatment Facilities	36,107.94	12,638.00	48,745.94
5    Other Local Education Agencies	82,625.76	197,905.85	280,531.61
6    Brick and Mortar Charter Schools	484,113.30	427,581.25	911,694.55
7    Cyber Charter Schools	1,661,581.27	1,001,007.96	2,662,589.23
8    Career and Technology Centers	1,732,837.56	620,173.44	2,353,011.00
9    Approved Private Schools	24,227.14		24,227.14
10   PA Chartered Schools for the Deaf and Blind			
11   Private Residential Rehabilitative Institutions		28,105.92	28,105.92
12   Juvenile Detention Centers	31,459.23	65,014.69	96,473.92
13   Special Program Jointures			
14   Other Tuition Not Included Elsewhere In This Section	47,439.74	707,426.72	754,866.46
<b>Section 2 Total</b>	<b>\$4,140,860.89</b>	<b>\$3,062,278.89</b>	<b>\$7,203,139.78</b>

LEA : 111444602     Mifflin County SD

Printed 12/14/2023 10:02:25 AM

Food Service / Cafeteria Operations Fund (51)

		<u>Total</u>
<b>3000 Operation of Non-Instructional Services</b>		
<b>100 <u>Personnel Services – Salaries</u></b>		
100 Personnel Services – Salaries		1,019,654.84
<b>Total Personnel Services – Salaries</b>		<b>\$1,019,654.84</b>
<b>200 <u>Personnel Services – Employee Benefits</u></b>		
210 Group Insurance – Contracted Provider		255,380.41
220 Social Security Contributions		76,997.03
230 PSERS Retirement Contributions		213,601.94
250 Unemployment Compensation		2,039.43
260 Workers' Compensation		5,097.95
280 Other Post-Employment Benefits (OPEB)		(23,692.17)
291 Other Retirement Plans		754.33
<b>Total Personnel Services – Employee Benefits</b>		<b>\$530,178.92</b>
<b>300 <u>Purchased Professional and Technical Services</u></b>		
329 Professional Educational Services – Other		152.06
<b>Total Purchased Professional and Technical Services</b>		<b>\$152.06</b>
<b>400 <u>Purchased Property Services</u></b>		
410 Cleaning Services		10,252.07
430 Repairs and Maintenance Services		25,830.95
460 Extermination Services		550.00
<b>Total Purchased Property Services</b>		<b>\$36,633.02</b>
<b>500 <u>Other Purchased Services</u></b>		
520 Insurance – General		8,654.36
530 Communications		1,251.16
550 Printing and Binding		1,390.00
570 Food Service Management		154,762.57
580 Travel		1,203.97
<b>Total Other Purchased Services</b>		<b>\$167,262.06</b>
<b>600 <u>Supplies</u></b>		
610 General Supplies		165,500.68
630 Food		1,460,997.48
<b>Total Supplies</b>		<b>\$1,626,498.16</b>
<b>800 <u>Other Objects</u></b>		
890 Miscellaneous Expenditures		3,622.02
<b>Total Other Objects</b>		<b>\$3,622.02</b>
<b>Total 3000 Operation of Non-Instructional Services</b>		<b>\$3,384,001.08</b>

LEA : 111444602     Mifflin County SD

Printed 12/14/2023 10:02:25 AM

Food Service / Cafeteria Operations Fund (51)

3100 Food Services	<u>Elementary</u>	<u>Secondary</u>	<u>Federal</u>	<u>Total</u>
<b>100 <u>Personnel Services – Salaries</u></b>				
100 Personnel Services – Salaries				1,019,654.84
<b>Total Personnel Services – Salaries</b>				<b>\$1,019,654.84</b>
<b>200 <u>Personnel Services – Employee Benefits</u></b>				
210 Group Insurance – Contracted Provider				255,380.41
220 Social Security Contributions				76,997.03
230 PSERS Retirement Contributions				213,601.94
250 Unemployment Compensation				2,039.43
260 Workers' Compensation				5,097.95
280 Other Post-Employment Benefits (OPEB)				(23,692.17)
291 Other Retirement Plans				754.33
<b>Total Personnel Services – Employee Benefits</b>				<b>\$530,178.92</b>
<b>300 <u>Purchased Professional and Technical Services</u></b>				
329 Professional Educational Services – Other				152.06
<b>Total Purchased Professional and Technical Services</b>				<b>\$152.06</b>
<b>400 <u>Purchased Property Services</u></b>				
410 Cleaning Services				10,252.07
430 Repairs and Maintenance Services				25,830.95
460 Extermination Services				550.00
<b>Total Purchased Property Services</b>				<b>\$36,633.02</b>
<b>500 <u>Other Purchased Services</u></b>				
520 Insurance – General				8,654.36
530 Communications				1,251.16
550 Printing and Binding				1,390.00
570 Food Service Management				154,762.57
580 Travel				1,203.97
<b>Total Other Purchased Services</b>				<b>\$167,262.06</b>
<b>600 <u>Supplies</u></b>				
610 General Supplies				165,500.68
630 Food				1,460,997.48
<b>Total Supplies</b>				<b>\$1,626,498.16</b>
<b>800 <u>Other Objects</u></b>				
890 Miscellaneous Expenditures				3,622.02
<b>Total Other Objects</b>				<b>\$3,622.02</b>
<b>Total 3100 Food Services</b>				<b>\$3,384,001.08</b>

	<u>Food Service(51)</u>	<u>Child Care Operations(52)</u>	<u>Other Enterprise(58)</u>	<u>Internal Service(60)</u>	<u>Total</u>
<b>3000 <u>Operation of Non-Instructional Services</u></b>					
3100 Food Services	3,384,001.08				3,384,001.08
<b>Total Operation of Non-Instructional Services</b>	<b>\$3,384,001.08</b>				<b>\$3,384,001.08</b>
<b>TOTAL ACTUAL EXPENDITURES &amp; OTHER FINANCING USES</b>	<b>\$3,384,001.08</b>				<b>\$3,384,001.08</b>



LEA : 111444602 Mifflin County SD

Printed 12/14/2023 10:02:35 AM

Fund	School	School Number	Local Personnel	Local Nonpersonnel	State Personnel	State Nonpersonnel	Federal Personnel	Federal Nonpersonnel	Total	Explanation
10										
	East Derry El Sch	6261	4,040.00	1,014.00	5,641.00	1,318.00	2,411.00	694.00	15,118.00	
	Indian Valley El Sch	8182	4,283.00	881.00	5,407.00	1,138.00	2,736.00	671.00	15,116.00	
	Indian Valley Intrmd Sch	8183	4,737.00	1,108.00	5,494.00	1,417.00	1,277.00	580.00	14,613.00	
	Lewistown El Sch	7789	4,570.00	970.00	6,096.00	1,252.00	3,048.00	2,661.00	18,597.00	
	Lewistown Intrmd Sch	8184	4,545.00	991.00	5,272.00	1,282.00	1,391.00	607.00	14,088.00	
	Mifflin Co HS	8187	6,474.00	1,862.00	7,502.00	2,361.00	2,430.00	545.00	21,174.00	
	Mifflin Co JHS	8186	5,195.00	937.00	6,024.00	1,254.00	745.00	523.00	14,678.00	
	Mifflin Co MS	8185	5,164.00	1,013.00	5,988.00	1,300.00	769.00	449.00	14,683.00	
	Strodes Mills El Sch	3196	4,448.00	1,014.00	5,797.00	1,318.00	3,388.00	1,001.00	16,966.00	
Total			43,456.00	9,790.00	53,221.00	12,640.00	18,195.00	7,731.00	145,033.00	

	<u>Nonspecial Education</u>	<u>Special Education</u>
<b>1000 Instruction</b>		
1200 Special Programs - Elementary / Secondary		13,199.00
<b>Total Instruction</b>		<b>\$13,199.00</b>
<b>TOTAL ACTUAL EXPENDITURES &amp; OTHER FINANCING USES</b>		<b>\$13,199.00</b>

LEA : 111444602    Mifflin County SD

Printed 12/14/2023 10:02:42 AM

1000 Instruction

100 <u>Personnel Services - Salaries</u>	
100 Personnel Services - Salaries	9,191.00
<b>Total Personnel Services - Salaries</b>	<b>\$9,191.00</b>
200 <u>Personnel Services - Employee Benefits</u>	
220 Social Security Contributions	703.00
230 PSERS Retirement Contributions	3,241.00
250 Unemployment Compensation	18.00
260 Workers' Compensation	46.00
<b>Total Personnel Services - Employee Benefits</b>	<b>\$4,008.00</b>
<b>Total 1000 Instruction</b>	<b>\$13,199.00</b>

LEA : 111444602     Mifflin County SD

Printed 12/14/2023 10:02:42 AM

1200 Special Programs - Elementary / Secondary	<u>Nonspecial Education</u>	<u>Special Education</u>
100 <u>Personnel Services - Salaries</u>		
100 Personnel Services - Salaries		9,191.00
Total Personnel Services - Salaries		\$9,191.00
200 <u>Personnel Services - Employee Benefits</u>		
220 Social Security Contributions		703.00
230 PSERS Retirement Contributions		3,241.00
250 Unemployment Compensation		18.00
260 Workers' Compensation		46.00
Total Personnel Services - Employee Benefits		\$4,008.00
Total 1200 Special Programs - Elementary / Secondary		\$13,199.00

LEA : 111444602    Mifflin County SD

Printed 12/14/2023 10:02:42 AM

1240 Academic Support	<u>Nonspecial Education</u>	<u>Special Education</u>
100 <u>Personnel Services - Salaries</u>		
100 Personnel Services - Salaries		9,191.00
<b>Total Personnel Services - Salaries</b>		<b>\$9,191.00</b>
200 <u>Personnel Services - Employee Benefits</u>		
220 Social Security Contributions		703.00
230 PSERS Retirement Contributions		3,241.00
250 Unemployment Compensation		18.00
260 Workers' Compensation		46.00
<b>Total Personnel Services - Employee Benefits</b>		<b>\$4,008.00</b>
<b>Total 1240 Academic Support</b>		<b>\$13,199.00</b>

LEA : 111444602     Mifflin County SD

Printed 12/14/2023 10:02:42 AM

1241 Learning Support - Public	<u>Nonspecial Education</u>	<u>Special Education</u>
100 <u>Personnel Services - Salaries</u>		
100 Personnel Services - Salaries		9,191.00
Total Personnel Services - Salaries		\$9,191.00
200 <u>Personnel Services - Employee Benefits</u>		
220 Social Security Contributions		703.00
230 PSERS Retirement Contributions		3,241.00
250 Unemployment Compensation		18.00
260 Workers' Compensation		46.00
Total Personnel Services - Employee Benefits		\$4,008.00
Total 1241 Learning Support - Public		\$13,199.00

LEA : 111444602    Mifflin County SD

Printed 12/14/2023 10:02:44 AM

	<u>Nonspecial Education</u>	<u>Special Education</u>
7000 Revenue from State Sources		
Total Revenue from State Sources	\$0	\$2,530
Total	\$0	\$2,530
TOTAL REVENUES	\$0	\$2,530

LEA : 111444602     Mifflin County SD

Printed 12/14/2023 10:02:46 AM

	<u>Nonspecial Education</u>	<u>Special Education</u>
<b>7000 Revenue from State Sources</b>		
7810 State Share of Social Security and Medicare Taxes	0	451
7820 State Share of Retirement Contributions	0	2,079
<b>Total Revenue from State Sources</b>	<b>\$0</b>	<b>\$2,530</b>
<b>TOTAL</b>	<b>\$0</b>	<b>\$2,530</b>
<b>TOTAL REVENUES</b>	<b>\$0</b>	<b>\$2,530</b>