

LEA Name : Mifflin County SD
Address : 201 Eighth St - Highland Park
Lewistown , PA 17044

County : Mifflin
AUN Number : 111444602
LEA Type : SD

Annual Financial Report Accuracy Certification Statement

For Fiscal Year Ending

6/30/2022

Pennsylvania Department of Education

&

Office of Comptroller Operations

PDE-2056: Intermediate Unit


PDE-2057: School District, AVTS/CTC, Charter School,
and Special Program Jointure

CERTIFICATION: By signing this page I agree that the electronic data submitted is a complete and accurate statement of the financial operations and status of the local education agency for the fiscal year. It has been prepared in accordance with generally accepted accounting principles and established Commonwealth of PA reporting guidelines.



Chief School Administrator Signature

Date 11/07/2022



Board Secretary Signature

Date 11/7/2022

Melinda Kenepp

Contact Person

mkk08@mcsdk12.org

Contact Person E-mail Address

(717)248-0148

Ext :2517

Contact Person Telephone Number

Contact Person Fax Number

Audit Certification
Annual Financial Report:
For Fiscal Year Ending **6/30/2022**
(Pursuant to PA School Code Section 218(b))

LEA Name : Mifflin County SD
AUN Number : 111444602
County : Mifflin

Audit Certification Due: 12/31/2022

This certification is applicable to the Annual Financial Report data submitted through the Consolidated Financial Reporting System (CFRS).

CERTIFICATION: By signing this page I agree that the financial statements of the school have been properly audited as noted above pursuant to Article XXIV, and in the auditor's professional opinion, the Annual Financial Report (PDE-2057) submitted through CFRS is materially consistent with the audited financial statements.

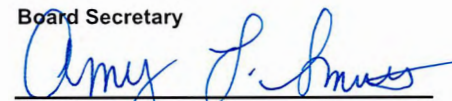
Chief School Administrator



Signature

12/16/2022
Date

Board Secretary



Signature

12/16/2022
Date

Melinda Kenepp

Contact Person

mkk08@mcsdk12.org

Contact Person E-mail Address

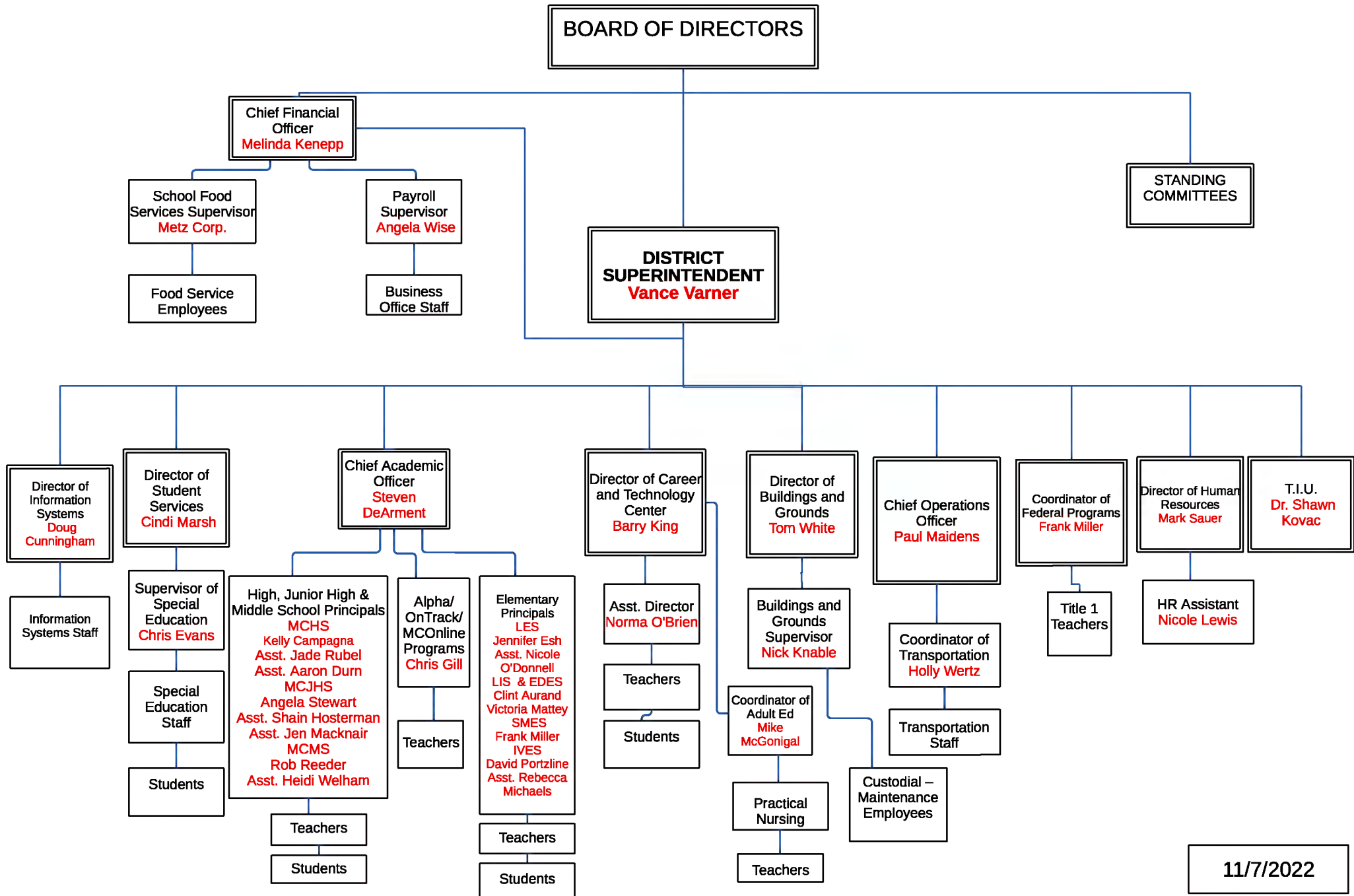
(717)248-0148

Ext :2517

Contact Person Telephone Number

Contact Person Fax Number

ADMINISTRATIVE ORGANIZATION MIFFLIN COUNTY SCHOOL DISTRICT



11/7/2022



Book	Policy Manual
Section	700 Property
Title	Property Records - Equipment Definition
Number	706.2
Status	Active
Adopted	July 1, 2015

Purpose

Independent asset units shall be classified as equipment in the district's accounting records which have a per unit cost equal to or greater than \$5,000 and have an estimated useful life of one (1) year or more.

In addition to the above criteria, the item should:

1. Retain its original shape, appearance, and character with use;
2. Not lose its identity through incorporation or fabrication into a different or more complex unit or substance; and
3. Be more feasible to repair rather than replace when a failure occurs.

If an independent asset does not meet the criteria listed above, it should not be classified as a supply item.

The cost of normal maintenance and repairs that do not add to the value of the asset or materially extend assets lives are not capitalized.

Capital Assets

Buildings, building improvements, equipment, and improvements other than buildings of the school district and its component unit are depreciated using the straight-line method over the following estimated lives:[1]

<u>Assets</u>	<u>Years</u>
Buildings	15 - 40
Building improvements	5 - 30
Equipment	3 - 20
Improvements other than buildings	10 - 20

Legal 1. Pol. 622
 Pol. 706

Last Modified by Leann Shaw on April 25, 2017

<u>Val Number</u>	<u>Description</u>	<u>Justification</u>
50118	<p>SOIN: Reductions/Retirements have been reported for General Obligation Bonds, or Authority Building Obligations, Extended Term Financing, and/or Other Long Term Debt/Liabilities however, comparable entries have not been reported in Governmental Fund Expenditure Functions 5110 & 5120, Objects 910 and 920. Please correct or provide a justification.</p> <p>SOIN: GOB, ABO, Extended Term Financing, and/or Other Long Term Debt Retirements/Repayments: \$5,454,349.00 Governmental Funds Expenditure Detail: Function 5110/5120, Object 910/920: \$4,830,000.00</p>	<p>Amortization of discounts/premiums related to various bond issues reflected on the government-wide statements only</p>
50375	<p>ADCS: The amount reported for Title V-B-2 should not exceed revenue reported in account 8518. Please correct or provide a justification.</p> <p>ADCS - Title V-B-2: \$111,814.97 Revenue code 8518: \$0.00</p>	<p>Per PDE chart of accounts revenue code 8518 has been deleted; revenue reported in 8519</p>
50450	<p>SESS - 2350 Legal and Accounting Services: SESS Schedule amounts for Special Education vary from prior year by 40% or more. Correct the data or enter a justification.</p> <p>SESS Schedule 2350: \$2,596.00 Prior Year SESS Schedule 2350: \$17,468.83</p>	<p>Total legal fees decreased by 71% over the prior year and impacted the amount allocated to Special Education by greater than 40% compared to the prior year</p>

LEA : 111444602 Mifflin County SD

Printed 12/19/2022 8:58:04 AM

Amounts Expressed in Whole Dollars	<u>General Fund</u> <u>(10)</u>	<u>Student Sponsored</u> <u>Activity Fund</u> <u>(21)</u>	<u>Public Purpose Trust</u> <u>(27)</u>	<u>Other Compt Approved</u> <u>(28)</u>	<u>Athletic / Activity</u> <u>(29)</u>
Assets And Deferred Outflows Of Resources					
Assets					
0100 Cash and Cash Equivalents	18,971,704				
0110 Investments					
0120 Taxes Receivable	1,634,094				
0130 Due From Other Funds	3,471,616				
0141 Due From Other Governments	1,464,002				
0142 State Revenue Receivable	2,964,814				
0143 Federal Revenue Receivable	4,906,523				
0145 Other Intergovernmental Revenue Receivable					
0146 Due from Primary Government					
0147 Due from Component Unit					
0150 Other Receivables	1,643,958				
0170 Inventories					
0180 Prepaid Expenses (Expenditures)	25,899				
0190 Other Current Assets					
Total Assets	\$35,082,610				
0910 Deferred Outflows of Resources					
Total Assets And Deferred Outflows Of Resources	\$35,082,610				

LEA : 111444602 Mifflin County SD

Printed 12/19/2022 8:58:04 AM

Amounts Expressed in Whole Dollars		<u>Capital Reserve (690.</u> <u>1850)</u> <u>(31)</u>	<u>Capital Reserve (1431)</u> <u>(32)</u>	<u>Other Capital Projects</u> <u>Fund</u> <u>(39)</u>	<u>Debt Service</u> <u>(40)</u>	<u>Permanent</u> <u>(90)</u>
Assets And Deferred Outflows Of Resources						
Assets						
0100	Cash and Cash Equivalents			9,306,026	8,831	
0110	Investments					
0120	Taxes Receivable					
0130	Due From Other Funds			1,000,000		
0141	Due From Other Governments					
0142	State Revenue Receivable					
0143	Federal Revenue Receivable					
0145	Other Intergovernmental Revenue Receivable					
0146	Due from Primary Government					
0147	Due from Component Unit					
0150	Other Receivables					
0170	Inventories					
0180	Prepaid Expenses (Expenditures)					
0190	Other Current Assets					
Total Assets				\$10,306,026	\$8,831	
0910	Deferred Outflows of Resources					
Total Assets And Deferred Outflows Of Resources				\$10,306,026	\$8,831	

LEA : 111444602 Mifflin County SD

Printed 12/19/2022 8:58:04 AM

Amounts Expressed in Whole Dollars		<u>Total Governmental</u>
		<u>Funds</u>
Assets And Deferred Outflows Of Resources		
Assets		
0100 Cash and Cash Equivalents	28,286,561	
0110 Investments		
0120 Taxes Receivable	1,634,094	
0130 Due From Other Funds	4,471,616	
0141 Due From Other Governments	1,464,002	
0142 State Revenue Receivable	2,964,814	
0143 Federal Revenue Receivable	4,906,523	
0145 Other Intergovernmental Revenue Receivable		
0146 Due from Primary Government		
0147 Due from Component Unit		
0150 Other Receivables	1,643,958	
0170 Inventories		
0180 Prepaid Expenses (Expenditures)	25,899	
0190 Other Current Assets		
Total Assets	\$45,397,467	
0910 Deferred Outflows of Resources		
Total Assets And Deferred Outflows Of Resources	\$45,397,467	

LEA : 111444602 Mifflin County SD

Printed 12/19/2022 8:58:04 AM

Amounts Expressed in Whole Dollars	<u>General Fund</u> <u>(10)</u>	<u>Student Sponsored</u> <u>Activity Fund</u> <u>(21)</u>	<u>Public Purpose Trust</u> <u>(27)</u>	<u>Other Compt Approved</u> <u>(28)</u>	<u>Athletic / Activity</u> <u>(29)</u>
Liabilities And Deferred Inflows Of Resources And Fund Balances					
Liabilities					
0400 Due to Other Funds	1,000,000				
0411 Due to Other Governments					
0412 Due to Primary Government					
0413 Due to Component Unit					
0420 Accounts Payable	1,278,013				
0430 Contracts Payable					
0440 Current Portion of Long-Term Debt					
0450 Short-Term Payables					
0461 Accrued Salaries and Benefits	7,918,168				
0462 Payroll Deductions and Withholding	380,397				
0480 Unearned Revenues	4,720,931				
0490 Other Current Liabilities	46,957				
Total Liabilities	\$15,344,466				
0950 Deferred Inflows of Resources					
Fund Balances					
0810 Nonspendable Fund Balance	25,899				
0820 Restricted Fund Balance					
0830 Committed Fund Balance	1,098,724				
0840 Assigned Fund Balance	11,216,140				
0850 Unassigned Fund Balance	7,397,381				
Total Fund Balances	\$19,738,144				
Total Liabilities, Deferred Inflows Of Resources And Fund Balances	\$35,082,610				

LEA : 111444602 Mifflin County SD

Printed 12/19/2022 8:58:04 AM

Amounts Expressed in Whole Dollars		<u>Capital Reserve (690.</u> <u>1850)</u> <u>(31)</u>	<u>Capital Reserve (1431)</u> <u>(32)</u>	<u>Other Capital Projects</u> <u>Fund</u> <u>(39)</u>	<u>Debt Service</u> <u>(40)</u>	<u>Permanent</u> <u>(90)</u>
Liabilities And Deferred Inflows Of Resources And Fund Balances						
Liabilities						
0400	Due to Other Funds			68,249		
0411	Due to Other Governments					
0412	Due to Primary Government					
0413	Due to Component Unit					
0420	Accounts Payable					
0430	Contracts Payable					
0440	Current Portion of Long-Term Debt					
0450	Short-Term Payables					
0461	Accrued Salaries and Benefits					
0462	Payroll Deductions and Withholding					
0480	Unearned Revenues			3,000,000		
0490	Other Current Liabilities					
Total Liabilities				\$3,068,249		
0950	Deferred Inflows of Resources					
Fund Balances						
0810	Nonspendable Fund Balance					
0820	Restricted Fund Balance					
0830	Committed Fund Balance			418,145		
0840	Assigned Fund Balance			6,819,632	8,831	
0850	Unassigned Fund Balance					
Total Fund Balances				\$7,237,777	\$8,831	
Total Liabilities, Deferred Inflows Of Resources And Fund Balances				\$10,306,026	\$8,831	

LEA : 111444602 Mifflin County SD

Printed 12/19/2022 8:58:04 AM

Amounts Expressed in Whole Dollars		<u>Total Governmental Funds</u>
Liabilities And Deferred Inflows Of Resources And Fund Balances		
Liabilities		
0400 Due to Other Funds		1,068,249
0411 Due to Other Governments		
0412 Due to Primary Government		
0413 Due to Component Unit		
0420 Accounts Payable		1,278,013
0430 Contracts Payable		
0440 Current Portion of Long-Term Debt		
0450 Short-Term Payables		
0461 Accrued Salaries and Benefits		7,918,168
0462 Payroll Deductions and Withholding		380,397
0480 Unearned Revenues		7,720,931
0490 Other Current Liabilities		46,957
Total Liabilities		\$18,412,715
0950 Deferred Inflows of Resources		
Fund Balances		
0810 Nonspendable Fund Balance		25,899
0820 Restricted Fund Balance		
0830 Committed Fund Balance		1,516,869
0840 Assigned Fund Balance		18,044,603
0850 Unassigned Fund Balance		7,397,381
Total Fund Balances		\$26,984,752
Total Liabilities, Deferred Inflows Of Resources And Fund Balances		\$45,397,467

LEA : 111444602 Mifflin County SD

Printed 12/19/2022 8:58:13 AM

Amounts Expressed in Whole Dollars	<u>General Fund</u> <u>(10)</u>	<u>Student Sponsored</u> <u>Activity Fund</u> <u>(21)</u>	<u>Public Purpose Trust</u> <u>(27)</u>	<u>Other Compt Approved</u> <u>(28)</u>	<u>Athletic / Activity</u> <u>(29)</u>
Revenues					
6000 Revenue from Local Sources	37,841,920				
7000 Revenue from State Sources	42,250,181				
8000 Revenue from Federal Sources	12,049,293				
Total Revenues	\$92,141,394				
Expenditures					
1000 Instruction	49,408,137				
2000 Support Services	27,299,031				
3000 Operation of Non-Instructional Services	1,162,608				
4000 Facilities Acquisition, Construction and Improvement Services	39,525				
5110 Debt Service	7,984,719				
5130 Refund of Prior Year Revenues / Receipts	8,623				
5140 Leases					
Total Expenditures	\$85,902,643				
Excess (Deficiency) Of Revenues Over Expenditures	\$6,238,751				
Other Financing Sources (Uses)					
9110 Face Value of Bonds Issued					
9120 Proceeds from Refunding of Bonds					
9130 Bond Premiums					
9200 Proceeds from Extended-Term Financing and Leases					
9300 Interfund Transfers - IN					
9400 Sale of or Compensation for Loss of Fixed Assets					
9710 Transfers from Component Units					
9720 Transfers from Primary Governments					
9910 Other Financing Sources Not Listed in the 9000 Series					
9990 Insurance Recoveries					
5120 Debt Service – Refunded Bonds					
5150 Bond Discounts					
5200 Interfund Transfers – Out	1,000,000				
5300 Transfers Out to Component Units/Primary Governments					
Total Other Financing Sources (Uses)	(\$1,000,000)				

LEA : 111444602 Mifflin County SD

Printed 12/19/2022 8:58:13 AM

Amounts Expressed in Whole Dollars	<u>Capital Reserve (690.</u> <u>1850)</u> <u>(31)</u>	<u>Capital Reserve (1431)</u> <u>(32)</u>	<u>Other Capital Projects</u> <u>Fund</u> <u>(39)</u>	<u>Debt Service</u> <u>(40)</u>	<u>Permanent</u> <u>(90)</u>
Revenues					
6000 Revenue from Local Sources			14,622		
7000 Revenue from State Sources					
8000 Revenue from Federal Sources					
Total Revenues			\$14,622		
Expenditures					
1000 Instruction					
2000 Support Services			484,302		
3000 Operation of Non-Instructional Services					
4000 Facilities Acquisition, Construction and Improvement Services					
5110 Debt Service					
5130 Refund of Prior Year Revenues / Receipts					
5140 Leases					
Total Expenditures			\$484,302		
Excess (Deficiency) Of Revenues Over Expenditures			(\$469,680)		
Other Financing Sources (Uses)					
9110 Face Value of Bonds Issued					
9120 Proceeds from Refunding of Bonds					
9130 Bond Premiums					
9200 Proceeds from Extended-Term Financing and Leases					
9300 Interfund Transfers - IN			1,000,000		
9400 Sale of or Compensation for Loss of Fixed Assets					
9710 Transfers from Component Units					
9720 Transfers from Primary Governments					
9910 Other Financing Sources Not Listed in the 9000 Series					
9990 Insurance Recoveries					
5120 Debt Service – Refunded Bonds					
5150 Bond Discounts					
5200 Interfund Transfers – Out					
5300 Transfers Out to Component Units/Primary Governments					
Total Other Financing Sources (Uses)			\$1,000,000		

LEA : 111444602 Mifflin County SD

Printed 12/19/2022 8:58:13 AM

Amounts Expressed in Whole Dollars		<u>Total Governmental Funds</u>
Revenues		
6000 Revenue from Local Sources		37,856,542
7000 Revenue from State Sources		42,250,181
8000 Revenue from Federal Sources		12,049,293
Total Revenues		\$92,156,016
Expenditures		
1000 Instruction		49,408,137
2000 Support Services		27,783,333
3000 Operation of Non-Instructional Services		1,162,608
4000 Facilities Acquisition, Construction and Improvement Services		39,525
5110 Debt Service		7,984,719
5130 Refund of Prior Year Revenues / Receipts		8,623
5140 Leases		
Total Expenditures		\$86,386,945
Excess (Deficiency) Of Revenues Over Expenditures		\$5,769,071
Other Financing Sources (Uses)		
9110 Face Value of Bonds Issued		
9120 Proceeds from Refunding of Bonds		
9130 Bond Premiums		
9200 Proceeds from Extended-Term Financing and Leases		
9300 Interfund Transfers - IN		1,000,000
9400 Sale of or Compensation for Loss of Fixed Assets		
9710 Transfers from Component Units		
9720 Transfers from Primary Governments		
9910 Other Financing Sources Not Listed in the 9000 Series		
9990 Insurance Recoveries		
5120 Debt Service – Refunded Bonds		
5150 Bond Discounts		
5200 Interfund Transfers – Out		1,000,000
5300 Transfers Out to Component Units/Primary Governments		
Total Other Financing Sources (Uses)		\$0

Amounts Expressed in Whole Dollars	<u>General Fund</u> <u>(10)</u>	<u>Student Sponsored</u> <u>Activity Fund</u> <u>(21)</u>	<u>Public Purpose Trust</u> <u>(27)</u>	<u>Other Compt Approved</u> <u>(28)</u>	<u>Athletic / Activity</u> <u>(29)</u>
Special And Extraordinary Items					
9920 Special Items – Gains					
9930 Extraordinary Items – Gains					
5520 Special Items – Losses					
5530 Extraordinary Items – Losses					
Net Change In Fund Balances	\$5,238,751				
Fund Balance					
0001 Fund Balance - Beginning of Fiscal Year	14,499,394				
Fund Balance - End Of Year	\$19,738,145				

Amounts Expressed in Whole Dollars		<u>Capital Reserve (690.</u>	<u>Capital Reserve (1431</u>	<u>Other Capital Projects</u>	<u>Debt Service</u>	<u>Permanent</u>
		<u>1850)</u>	<u>(32)</u>	<u>Fund</u>	<u>(40)</u>	<u>(90)</u>
		<u>(31)</u>		<u>(39)</u>		
Special And Extraordinary Items						
9920	Special Items – Gains					
9930	Extraordinary Items – Gains					
5520	Special Items – Losses					
5530	Extraordinary Items – Losses					
Net Change In Fund Balances				\$530,320		
Fund Balance						
0001	Fund Balance - Beginning of Fiscal Year			6,707,456	8,831	
Fund Balance - End Of Year				\$7,237,776	\$8,831	

Amounts Expressed in Whole Dollars		<u>Total Governmental Funds</u>
Special And Extraordinary Items		
9920	Special Items – Gains	
9930	Extraordinary Items – Gains	
5520	Special Items – Losses	
5530	Extraordinary Items – Losses	
Net Change In Fund Balances		\$5,769,071
Fund Balance		
0001	Fund Balance - Beginning of Fiscal Year	21,215,681
Fund Balance - End Of Year		\$26,984,752

LEA : 111444602 Mifflin County SD

Printed 12/19/2022 8:58:17 AM

Amounts Expressed in Whole Dollars	<u>Food Service</u> (51)	<u>Child Care</u> <u>Operations</u> (52)	<u>Other Enterprise</u> (58)	<u>TOTAL</u>	<u>Internal Service</u> (60)
Assets And Deferred Outflows Of Resources					
Current Assets					
0100 Cash and Cash Equivalents	317,512			317,512	
0110 Investments					
0130 Due From Other Funds					
0141 Due From Other Governments					
0142 State Revenue Receivable					
0143 Federal Revenue Receivable					
0146 Due from Primary Government					
0147 Due from Component Unit					
0150 Other Receivables	11,109			11,109	
0170 Inventories	40,374			40,374	
0180 Prepaid Expenses (Expenditures)					
0190 Other Current Assets					
Total Current Assets	\$368,995			\$368,995	
Noncurrent Assets					
0211 Land					
0212 Site Improvements (Net)					
0220 Buildings and Building Improvements (Net)					
0230 Machinery, Equipment and Furniture (Net)					
0250 Construction in Progress					
0260 Long Term Prepayments					
0290 Other Noncurrent Assets					
Total Noncurrent Assets					
0910 Deferred Outflows of Resources	138,823			138,823	
Total Assets And Deferred Outflows Of Resources	\$507,818			\$507,818	

LEA : 111444602 Mifflin County SD

Printed 12/19/2022 8:58:17 AM

Amounts Expressed in Whole Dollars	<u>Food Service</u> <u>(51)</u>	<u>Child Care</u> <u>Operations</u> <u>(52)</u>	<u>Other Enterprise</u> <u>(58)</u>	<u>TOTAL</u>	<u>Internal Service</u> <u>(60)</u>
Liabilities And Deferred Inflows Of Resources And Net Position					
Current Liabilities					
0400 Due to Other Funds	401,296			401,296	
0411 Due to Other Governments					
0413 Due to Component Unit					
0420 Accounts Payable	1,957			1,957	
0430 Contracts Payable					
0440 Current Portion of Long-Term Debt					
0450 Short-Term Payables					
0461 Accrued Salaries and Benefits	4,270			4,270	
0462 Payroll Deductions and Withholding					
0480 Unearned Revenues	66,036			66,036	
0490 Other Current Liabilities	42,433			42,433	
Total Current Liabilities	\$515,992			\$515,992	
Noncurrent Liabilities					
0510 Bonds Payable					
0520 Extended-Term Financing Agreements Payable					
0530 Lease Obligations					
0540 Accumulated Compensated Absences	60,857			60,857	
0550 Authority Lease Obligations					
0560 Other Post-Employment Benefits (OPEB)	196,273			196,273	
0570 Net Pension Liability	2,182,181			2,182,181	
0599 Other Noncurrent Liabilities					
Total Noncurrent Liabilities	\$2,439,311			\$2,439,311	
Total Liabilities	\$2,955,303			\$2,955,303	
0950 Deferred Inflows of Resources	411,213			411,213	
Net Position					
0791 Net Investment in Capital Assets					
0008 Restricted Net Position (0792 – 0798)					
0799 Unrestricted Net Position	(2,858,698)			(2,858,698)	
Total Net Position	(\$2,858,698)			(\$2,858,698)	
Total Liabilities And Deferred Inflows Of Resources And Net Position	\$507,818			\$507,818	

Amounts Expressed in Whole Dollars	Food Service (51)	Child Care Operations (52)	Other Enterprise (58)	TOTAL	Internal Service (60)
Operating Revenues					
6600 Food Service Revenue	179,511			179,511	
0071 Charges for Services	52,531			52,531	
0072 Other Operating Revenue					
Total Operating Revenues	\$232,042			\$232,042	
Operating Expenses					
100 Personnel Services – Salaries	976,307			976,307	
200 Personnel Services – Employee Benefits	507,957			507,957	
300 Purchased Professional and Technical Services					
400 Purchased Property Services	40,928			40,928	
500 Other Purchased Services	145,522			145,522	
600 Supplies	1,370,713			1,370,713	
740 Depreciation					
810 Dues and Fees					
880 Refunds of Prior Years' Receipts					
890 Miscellaneous Expenditures	4,850			4,850	
Total Operating Expenses	\$3,046,277			\$3,046,277	
Operating Income (Loss)	(\$2,814,235)			(\$2,814,235)	
Non Operating Revenues (Expenses)					
6500 Earnings on Investments	542			542	
6920 Contributions and Donations from Private Sources	5,024			5,024	
6930 Gains or Losses on Sale of Fixed Assets					
6991 Refunds of a Prior Year Expenditure					
7000 Revenue from State Sources	284,342			284,342	
8000 Revenue from Federal Sources	3,167,639			3,167,639	
9990 Insurance Recoveries					
820 Claims and Judgments Against the LEA					
830 Interest					
TOTAL Non Operating Revenues (Expenses)	\$3,457,547			\$3,457,547	
Income (Loss) Before Contributions And Transfers	\$643,312			\$643,312	

Amounts Expressed in Whole Dollars	<u>Food Service</u> <u>(51)</u>	<u>Child Care Operations</u> <u>(52)</u>	<u>Other Enterprise</u> <u>(58)</u>	<u>TOTAL</u>	<u>Internal Service</u> <u>(60)</u>
Contributions, Transfers, and Special and Extraordinary Items					
5200 Interfund Transfers – Out					
5300 Transfers Out to Component Units/Primary Governments					
5520 Special Items – Losses					
5530 Extraordinary Items – Losses					
9300 Interfund Transfers - IN					
9500 Capital Contributions					
9700 Transfers IN From Component Units/Primary Governments					
9920 Special Items – Gains					
9930 Extraordinary Items – Gains					
Change In Net Position	\$643,312			\$643,312	
0002 Net Position - Beginning of Fiscal Year	(3,502,010)			(3,502,010)	
0003 Accounting Changes / Residual Equity Transfers					
Net Position - End Of Year	(\$2,858,698)			(\$2,858,698)	

LEA : 111444602 Mifflin County SD

Printed 12/19/2022 8:58:28 AM

Amounts Expressed in Whole Dollars	<u>Food Service</u> <u>(51)</u>	<u>Child Care Operations</u> <u>(52)</u>	<u>Other Enterprise</u> <u>(58)</u>	<u>TOTAL</u>	<u>Internal Service(60)</u>
Cash Flows From Operating Activities					
0011 Cash Receipts From Users	236,079			236,079	
0012 Cash Receipts From Assessments Made to Other Funds					
0013 Cash Receipts From Earnings on Investments					
0014 Cash Receipts From Other Operating Revenue					
0015 Cash Payments To Employees For Services	2,677,417			2,677,417	
0016 Cash Payments For Insurance Claims					
0017 Cash Payments To Suppliers For Goods and Services	1,613,865			1,613,865	
0018 Cash Payments For Other Operating Expenses					
Net Cash Provided By (Used For) Operating Activities	(\$4,055,203)			(\$4,055,203)	
Cash Flows From Non-Capital Financing Activities					
0021 Receipts From Local Sources - 6000	5,024			5,024	
0022 Receipts From State Sources - 7000	286,152			286,152	
0023 Receipts From Federal Sources -8000	3,282,991			3,282,991	
0024 Notes and Loans Received (Repaid)					
0025 Interest Paid on Notes/Loans - 5100-830					
0026 Operating Transfers In (Out)/Residual Equity Trans					
0027 Operating Transfers In (Out) Primary Government / Comp Unit					
0028 Receipts From Refund of Prior Year Expenditures - 6991					
0029 Special and Extraordinary Gains (losses)					
0030 Receipts from Insurance Recoveries -9990					
Net Cash Prov By (Used for) Non-Capital Financing Activities	\$3,574,167			\$3,574,167	
Cash Flows From Capital and Related Financing Activities					
0031 Payments For Fac Acq, Const, and Imp - 4000					
0032 Gain / (Loss) on Sale of Fixed Assets - 6930					
0033 Proceeds From Extended Term Financing - 9200					
0034 Principal Paid on Financing Agreements					
0035 Interest Paid on Financing Agreements - 5100-830					
0036 (Inc) Dec in Contributed Capital					
Net Cash Prov By (Used for) Capital and Related Financing Activities					
Cash Flows From Investing Activities					
0041 Earnings on Investments - 6500	542			542	
0042 Purchase of Inv Securities / Deposits to Inv Pools					
0043 Receipts From Investment Pool Withdrawals					
0044 Proceeds from Sale and Maturity of Inv Securities					

LEA : 111444602 Mifflin County SD

Printed 12/19/2022 8:58:28 AM

0045 Loans Received (Paid)

Net Cash Prov By (Used for) Investing Activities	\$542	\$542
--	-------	-------

LEA : 111444602 Mifflin County SD

Printed 12/19/2022 8:58:28 AM

	<u>Food Service</u> <u>(51)</u>	<u>Child Care Operations</u> <u>(52)</u>	<u>Other Enterprise</u> <u>(58)</u>	<u>TOTAL</u>	<u>Internal Service</u> <u>(60)</u>
Net Increase (Decrease) in Cash Flows	(480,494)			(480,494)	
0004 Cash and Cash Equivalents Beginning of Year	798,006			798,006	
Cash and Cash Equivalents at Year End	\$317,512			\$317,512	
<hr/>					
Reconciliation of Operating Income (Loss) To Net Cash Provided by (Used For) Operating Activities					
0005 Operating Income (Loss) per REP	(2,814,235)			(2,814,235)	
Adjustments					
0051 Depreciation and Net Amortization					
0052 Provision for Uncollectible Accounts					
0053 Other Adjustments					
Effect of Changes in Assets, Liabilities, Deferred Outflows and Deferred Inflows					
0054 (Inc) Dec In Accounts Receivable (0120-0150)	(11,109)			(11,109)	
0055 Advances to Other Funds (0160)					
0056 (Inc) Dec in Inventories (0170)	(15,201)			(15,201)	
0057 (Inc) Dec in Prepaid Expenses (0180)					
0058 (Inc) Dec in Other Current or Noncurrent Assets					
0064 Deferred Outflows (0910)	84,469			84,469	
0059 Inc (Dec) in Accounts Payable (0400-0450)	(23,721)			(23,721)	
0060 Inc (Dec) in Accrued Salaries/Benefits (0461)	(14,051)			(14,051)	
0065 Inc (Dec) in Net Pension Liabilities (0570)	(392,937)			(392,937)	
0066 Inc (Dec) in Other Postemp Benefit Oblig (0560)	(208,308)			(208,308)	
0061 Inc (Dec) in Payroll Deductions/Withholding (0462)					
0062 Inc (Dec) in Unearned Revenue (0480)	(10,588)			(10,588)	
0063 Inc (Dec) in Other Current or Noncurrent Liabilities	(988,238)			(988,238)	
0067 Deferred Inflows (0950)	338,716			338,716	
Total Adjustments	(\$1,240,968)			(\$1,240,968)	
Cash Provided By (Used for) Total	(\$4,055,203)			(\$4,055,203)	

COMBINED STATEMENT OF CASH FLOWS
SCHEDULE OF NONCASH INVESTING, CAPITAL, AND FINANCING ACTIVITIES

Explanation of Transaction and Balance Sheet Effect	Amount
Total	

LEA : 111444602 Mifflin County SD

Printed 12/19/2022 8:58:32 AM

Amounts Expressed in Whole Dollars	<u>Private Purpose Trust</u> <u>(71)</u>	<u>Investment Trust</u> <u>(72)</u>	<u>Pension Trust</u> <u>(73)</u>	<u>Student Activity Custodial</u> <u>(81)</u>
Assets And Deferred Outflows Of Resources				
Assets				
0100 Cash and Cash Equivalents	47,163			239,116
0110 Investments				
0130 Due From Other Funds				
0140 Due from Other Governments, Primary Government and Component Units				
0150 Other Receivables				
0170 Inventories				
0180 Prepaid Expenses (Expenditures)				
0190 Other Current Assets				
0220 Buildings and Building Improvements (Net)				
0230 Machinery, Equipment and Furniture (Net)				
Total Assets	\$47,163			\$239,116
0910 Deferred Outflows of Resources				
Total Assets And Deferred Outflows Of Resources	\$47,163			\$239,116

LEA : 111444602 Mifflin County SD

Printed 12/19/2022 8:58:32 AM

Amounts Expressed in Whole Dollars		<u>Other Custodial</u> <u>(89)</u>	<u>Fiduciary Component Units</u> <u>(98)</u>	<u>Total Fiduciary Funds</u>
Assets And Deferred Outflows Of Resources				
Assets				
0100	Cash and Cash Equivalents			286,279
0110	Investments			
0130	Due From Other Funds			
0140	Due from Other Governments, Primary Government and Component Units			
0150	Other Receivables			
0170	Inventories			
0180	Prepaid Expenses (Expenditures)			
0190	Other Current Assets			
0220	Buildings and Building Improvements (Net)			
0230	Machinery, Equipment and Furniture (Net)			
Total Assets				\$286,279
0910	Deferred Outflows of Resources			
Total Assets And Deferred Outflows Of Resources				\$286,279

LEA : 111444602 Mifflin County SD

Printed 12/19/2022 8:58:32 AM

Amounts Expressed in Whole Dollars	<u>Private Purpose Trust</u> <u>(71)</u>	<u>Investment Trust</u> <u>(72)</u>	<u>Pension Trust</u> <u>(73)</u>	<u>Student Activity Custodial</u> <u>(81)</u>
Liabilities, Deferred Inflows Of Resources And Net Position				
Liabilities				
0400 Due to Other Funds				2,071
0410 Due to Other Governments, Primary Government and Component Units				
0420 Accounts Payable				197
0430 Contracts Payable				
0450 Short-Term Payables				
0460 Payroll Accruals and Withholdings				
0480 Unearned Revenues				
0490 Other Current Liabilities				
Total Liabilities				\$2,268
0950 Deferred Inflows of Resources				
Net Position				
0791 Net Investment in Capital Assets				
0009 Restricted Net Position (0792 – 0798)	47,163			236,848
0799 Unrestricted Net Position				
Total Net Position	\$47,163			\$236,848
Total Liabilities, Deferred Inflows Of Resources And Net Position	\$47,163			\$239,116

LEA : 111444602 Mifflin County SD

Printed 12/19/2022 8:58:32 AM

Amounts Expressed in Whole Dollars	<u>Other Custodial</u> <u>(89)</u>	<u>Fiduciary Component Units</u> <u>(98)</u>	<u>Total Fiduciary Funds</u>
Liabilities, Deferred Inflows Of Resources And Net Position			
Liabilities			
0400 Due to Other Funds			2,071
0410 Due to Other Governments, Primary Government and Component Units			
0420 Accounts Payable			197
0430 Contracts Payable			
0450 Short-Term Payables			
0460 Payroll Accruals and Withholdings			
0480 Unearned Revenues			
0490 Other Current Liabilities			
Total Liabilities			\$2,268
0950 Deferred Inflows of Resources			
Net Position			
0791 Net Investment in Capital Assets			
0009 Restricted Net Position (0792 – 0798)			284,011
0799 Unrestricted Net Position			
Total Net Position			\$284,011
Total Liabilities, Deferred Inflows Of Resources And Net Position			\$286,279

LEA : 111444602 Mifflin County SD

Printed 12/19/2022 8:58:36 AM

Amounts Expressed in Whole Dollars	<u>Private Purpose Trust</u> <u>(71)</u>	<u>Investment Trust</u> <u>(72)</u>	<u>Pension Trust</u> <u>(73)</u>	<u>Student Activity</u> <u>Custodial</u> <u>(81)</u>	<u>Other Custodial</u> <u>(89)</u>	<u>Fiduciary Component</u> <u>Units</u> <u>(98)</u>
Additions						
0091 Gifts and Contributions	12,500			9,916		
0095 Net Investment Earnings	57			119		
0092 Other Additions				374,987		
Deductions						
0093 Scholarships Awarded	66,500					
0094 Other Deductions				359,246		
Change In Net Position	(\$53,943)			\$25,776		
0006 Net Position – Beginning of Fiscal Year	101,106			211,073		
0007 Net Position Held in Trust for Pension Benefits						
Net Position - End of Fiscal Year	\$47,163			\$236,849		

LEA : 111444602 Mifflin County SD

Printed 12/19/2022 8:58:36 AM

Amounts Expressed in Whole Dollars		<u>Total Fiduciary</u>
		<u>Funds</u>
Additions		
0091	Gifts and Contributions	22,416
0095	Net Investment Earnings	176
0092	Other Additions	374,987
Deductions		
0093	Scholarships Awarded	66,500
0094	Other Deductions	359,246
Change In Net Position		(\$28,167)
0006	Net Position – Beginning of Fiscal Year	312,179
0007	Net Position Held in Trust for Pension Benefits	
Net Position - End of Fiscal Year		\$284,012

	Revenue Reported In Current Year	Current Year Tax Accrual	Prior Year Tax Accrual	Taxes Collected In Current Year
Revenue from Local Sources				
6111 Current Real Estate Taxes	26,025,447.78			26,025,447.78
6112 Interim Real Estate Taxes	95,085.88			95,085.88
6113 Public Utility Realty Taxes	34,089.43			34,089.43
6114 Payments in Lieu of Current Taxes - State / Local	130,987.04			130,987.04
6120 Current Per Capita Taxes, Section 679	103,186.20			103,186.20
6141 Current Act 511 Per Capita Taxes	103,448.73			103,448.73
6143 Current Act 511 Local Services Taxes	78,993.83			78,993.83
6151 Current Act 511 Earned Income Taxes	7,666,080.16			7,666,080.16
6153 Current Act 511 Real Estate Transfer Taxes	754,075.90			754,075.90
6411 Delinquent Real Estate Taxes	1,641,296.00			1,641,296.00
6420 Delinquent Per Capita Taxes, Section 679	22,014.69			22,014.69
6440 Delinquent Local Enabling Taxes - Flat Rate Assessments	22,166.68			22,166.68
6500 Earnings on Investments	29,342.41			
6700 Revenues from LEA Activities	85,838.51			
6832 Federal IDEA Revenue Received as Pass Through	815,251.26			
6910 Rentals	8,699.00			
6920 Contributions and Donations from Private Sources	7,345.17			
6942 Summer School Tuition	500.00			
6944 Receipts from Other LEAs in Pennsylvania - Education	36,082.76			
6961 Transportation Services Provided Other Pennsylvania LEAs	28,343.55			
6962 Other Services Provided Other Pennsylvania LEAs	8,543.56			
6969 All Other Services Provided Other Governments	28,091.99			
6999 Other Revenues Not Specified Above	117,009.86			
TOTAL Revenue from Local Sources	\$37,841,920.39			\$36,676,872.32

	Revenue Reported In Current Year
<u>Revenue from State Sources</u>	
7111 Basic Education Funding-Formula	22,118,356.34
7112 Basic Education Funding-Social Security	1,254,243.74
7160 Tuition for Orphans Subsidy	83,631.82
7250 Migratory Children	160.00
7271 Special Education funds for School-Aged Pupils	3,766,177.75
7311 Pupil Transportation Subsidy	3,735,191.58
7312 Nonpublic and Charter School Pupil Transportation Subsidy	156,695.00
7320 Rental and Sinking Fund Payments / Building Reimbursement Subsidy	1,135,910.73
7330 Health Services (Medical, Dental, Nurse, Act 25)	95,196.63
7340 State Property Tax Reduction Allocation	1,923,889.98
7361 School Safety and Security Grants	255,453.39
7505 Ready to Learn Block Grant	968,914.00
7820 State Share of Retirement Contributions	6,756,359.97
TOTAL Revenue from State Sources	\$42,250,180.93

	Revenue Reported In Current Year	
<u>Revenue from Federal Sources</u>		
8514 NCLB, Title I - Improving the Academic Achievement of the Disadvantaged	2,262,990.19	
8515 NCLB, Title II - Preparing, Training and Recruiting High Quality Teachers and Principals	287,903.51	
8516 NCLB, Title III - Language Instruction for Limited English Proficient and Immigrant Students	13,223.00	
8517 NCLB, Title IV - 21St Century Schools	174,659.87	
8519 NCLB, Title VI - Flexibility and Accountability	111,814.97	
8741 Elementary and Secondary School Emergency Relief Fund (ESSER)	676,977.65	
8742 Governor's Emergency Education Relief Fund (GEER)	3,782.12	
8743 ESSER II - Elementary and Secondary School Emergency Relief Fund	3,202,884.08	
8744 ARP ESSER - Elementary and Secondary School Emergency Relief Fund	4,848,364.09	
8746 ARP IDEA	182,620.31	
8749 Other CARES Act Funding	1,873.26	
8751 ARP ESSER Learning Loss	85,028.72	
8752 ARP ESSER Summer Programs	27,985.22	
8754 ARP ESSER Homeless Children and Youth Funds	37,231.71	
8810 School-Based Access Medicaid Reimbursement Program (SBAP) Reimbursements (Access)	96,490.63	
8820 Medical Assistance Reimbursement for Administrative Claiming (Quarterly) Program	35,463.42	
TOTAL Revenue from Federal Sources	\$12,049,292.75	
TOTAL FROM ALL SOURCES	\$92,141,394.07	\$36,676,872.32

LEA : 111444602 Mifflin County SD

Printed 12/19/2022 8:58:44 AM

	<u>General Fund (10)</u>	<u>Student Sponsored Activity Fund (21)</u>	<u>Public Purpose Trust (27)</u>	<u>Other Compt Approved (28)</u>	<u>Athletic / Activity (29)</u>	<u>Capital Reserve (690, 1850) (31)</u>
6000 Revenue from Local Sources						
6111 Current Real Estate Taxes	26,025,447.78					
6112 Interim Real Estate Taxes	95,085.88					
6113 Public Utility Realty Taxes	34,089.43					
6114 Payments in Lieu of Current Taxes - State / Local	130,987.04					
6120 Current Per Capita Taxes, Section 679	103,186.20					
6141 Current Act 511 Per Capita Taxes	103,448.73					
6143 Current Act 511 Local Services Taxes	78,993.83					
6151 Current Act 511 Earned Income Taxes	7,666,080.16					
6153 Current Act 511 Real Estate Transfer Taxes	754,075.90					
6411 Delinquent Real Estate Taxes	1,641,296.00					
6420 Delinquent Per Capita Taxes, Section 679	22,014.69					
6440 Delinquent Local Enabling Taxes - Flat Rate Assessments	22,166.68					
6500 Earnings on Investments	29,342.41					
6700 Revenues from LEA Activities	85,838.51					
6832 Federal IDEA Revenue Received as Pass Through	815,251.26					
6910 Rentals	8,699.00					
6920 Contributions and Donations from Private Sources	7,345.17					
6942 Summer School Tuition	500.00					
6944 Receipts from Other LEAs in Pennsylvania - Education	36,082.76					
6961 Transportation Services Provided Other Pennsylvania LEAs	28,343.55					
6962 Other Services Provided Other Pennsylvania LEAs	8,543.56					
6969 All Other Services Provided Other Governments	28,091.99					
6999 Other Revenues Not Specified Above	117,009.86					
6000 Total Revenue from Local Sources	\$37,841,920.39					
7000 Revenue from State Sources						
7111 Basic Education Funding-Formula	22,118,356.34					
7112 Basic Education Funding-Social Security	1,254,243.74					
7160 Tuition for Orphans Subsidy	83,631.82					
7250 Migratory Children	160.00					
7271 Special Education funds for School-Aged Pupils	3,766,177.75					
7311 Pupil Transportation Subsidy	3,735,191.58					
7312 Nonpublic and Charter School Pupil Transportation Subsidy	156,695.00					
7320 Rental and Sinking Fund Payments / Building Reimbursement Subsidy	1,135,910.73					
7330 Health Services (Medical, Dental, Nurse, Act 25)	95,196.63					
7340 State Property Tax Reduction Allocation	1,923,889.98					

LEA : 111444602 Mifflin County SD

Printed 12/19/2022 8:58:44 AM

	<u>Capital Reserve</u> <u>(1431) (32)</u>	<u>Other Capital</u> <u>Projects Fund (39)</u>	<u>Debt Service (40)</u>	<u>Permanent (90)</u>	<u>Total</u>
6000 Revenue from Local Sources					
6111 Current Real Estate Taxes					26,025,447.78
6112 Interim Real Estate Taxes					95,085.88
6113 Public Utility Realty Taxes					34,089.43
6114 Payments in Lieu of Current Taxes - State / Local					130,987.04
6120 Current Per Capita Taxes, Section 679					103,186.20
6141 Current Act 511 Per Capita Taxes					103,448.73
6143 Current Act 511 Local Services Taxes					78,993.83
6151 Current Act 511 Earned Income Taxes					7,666,080.16
6153 Current Act 511 Real Estate Transfer Taxes					754,075.90
6411 Delinquent Real Estate Taxes					1,641,296.00
6420 Delinquent Per Capita Taxes, Section 679					22,014.69
6440 Delinquent Local Enabling Taxes - Flat Rate Assessments					22,166.68
6500 Earnings on Investments		14,622.00			43,964.41
6700 Revenues from LEA Activities					85,838.51
6832 Federal IDEA Revenue Received as Pass Through					815,251.26
6910 Rentals					8,699.00
6920 Contributions and Donations from Private Sources					7,345.17
6942 Summer School Tuition					500.00
6944 Receipts from Other LEAs in Pennsylvania - Education					36,082.76
6961 Transportation Services Provided Other Pennsylvania LEAs					28,343.55
6962 Other Services Provided Other Pennsylvania LEAs					8,543.56
6969 All Other Services Provided Other Governments					28,091.99
6999 Other Revenues Not Specified Above					117,009.86
6000 Total Revenue from Local Sources		\$14,622.00			\$37,856,542.39
7000 Revenue from State Sources					
7111 Basic Education Funding-Formula					22,118,356.34
7112 Basic Education Funding-Social Security					1,254,243.74
7160 Tuition for Orphans Subsidy					83,631.82
7250 Migratory Children					160.00
7271 Special Education funds for School-Aged Pupils					3,766,177.75
7311 Pupil Transportation Subsidy					3,735,191.58
7312 Nonpublic and Charter School Pupil Transportation Subsidy					156,695.00
7320 Rental and Sinking Fund Payments / Building Reimbursement Subsidy					1,135,910.73
7330 Health Services (Medical, Dental, Nurse, Act 25)					95,196.63
7340 State Property Tax Reduction Allocation					1,923,889.98

LEA : 111444602 Mifflin County SD

Printed 12/19/2022 8:58:44 AM

	<u>General Fund (10)</u>	<u>Student Sponsored Activity Fund (21)</u>	<u>Public Purpose Trust (27)</u>	<u>Other Compt Approved (28)</u>	<u>Athletic / Activity (29)</u>	<u>Capital Reserve (690, 1850) (31)</u>
7000 Revenue from State Sources						
7361 School Safety and Security Grants	255,453.39					
7505 Ready to Learn Block Grant	968,914.00					
7820 State Share of Retirement Contributions	6,756,359.97					
7000 Total Revenue from State Sources	\$42,250,180.93					
8000 Revenue from Federal Sources						
8514 NCLB, Title I - Improving the Academic Achievement of the Disadvantaged	2,262,990.19					
8515 NCLB, Title II - Preparing, Training and Recruiting High Quality Teachers and Principals	287,903.51					
8516 NCLB, Title III - Language Instruction for Limited English Proficient and Immigrant Students	13,223.00					
8517 NCLB, Title IV - 21st Century Schools	174,659.87					
8519 NCLB, Title VI - Flexibility and Accountability	111,814.97					
8741 Elementary and Secondary School Emergency Relief Fund (ESSER)	676,977.65					
8742 Governor's Emergency Education Relief Fund (GEER)	3,782.12					
8743 ESSER II - Elementary and Secondary School Emergency Relief Fund	3,202,884.08					
8744 ARP ESSER - Elementary and Secondary School Emergency Relief Fund	4,848,364.09					
8746 ARP IDEA	182,620.31					
8749 Other CARES Act Funding	1,873.26					
8751 ARP ESSER Learning Loss	85,028.72					
8752 ARP ESSER Summer Programs	27,985.22					
8754 ARP ESSER Homeless Children and Youth Funds	37,231.71					
8810 School-Based Access Medicaid Reimbursement Program (SBAP) Reimbursements (Access)	96,490.63					
8820 Medical Assistance Reimbursement for Administrative Claiming (Quarterly) Program	35,463.42					
8000 Total Revenue from Federal Sources	\$12,049,292.75					
9000 Other Financing Sources						
9310 General Fund Transfers						
9000 Total Other Financing Sources						
Total From All Sources	\$92,141,394.07					

LEA : 111444602 Mifflin County SD

Printed 12/19/2022 8:58:44 AM

	<u>Capital Reserve</u> <u>(1431) (32)</u>	<u>Other Capital</u> <u>Projects Fund (39)</u>	<u>Debt Service (40)</u>	<u>Permanent (90)</u>	<u>Total</u>
7000 Revenue from State Sources					
7361 School Safety and Security Grants					255,453.39
7505 Ready to Learn Block Grant					968,914.00
7820 State Share of Retirement Contributions					6,756,359.97
7000 Total Revenue from State Sources					\$42,250,180.93
8000 Revenue from Federal Sources					
8514 NCLB, Title I - Improving the Academic Achievement of the Disadvantaged					2,262,990.19
8515 NCLB, Title II - Preparing, Training and Recruiting High Quality Teachers and Principals					287,903.51
8516 NCLB, Title III - Language Instruction for Limited English Proficient and Immigrant Students					13,223.00
8517 NCLB, Title IV - 21st Century Schools					174,659.87
8519 NCLB, Title VI - Flexibility and Accountability					111,814.97
8741 Elementary and Secondary School Emergency Relief Fund (ESSER)					676,977.65
8742 Governor's Emergency Education Relief Fund (GEER)					3,782.12
8743 ESSER II - Elementary and Secondary School Emergency Relief Fund					3,202,884.08
8744 ARP ESSER - Elementary and Secondary School Emergency Relief Fund					4,848,364.09
8746 ARP IDEA					182,620.31
8749 Other CARES Act Funding					1,873.26
8751 ARP ESSER Learning Loss					85,028.72
8752 ARP ESSER Summer Programs					27,985.22
8754 ARP ESSER Homeless Children and Youth Funds					37,231.71
8810 School-Based Access Medicaid Reimbursement Program (SBAP) Reimbursements (Access)					96,490.63
8820 Medical Assistance Reimbursement for Administrative Claiming (Quarterly) Program					35,463.42
8000 Total Revenue from Federal Sources					\$12,049,292.75
9000 Other Financing Sources					
9310 General Fund Transfers		1,000,000.00			1,000,000.00
9000 Total Other Financing Sources		\$1,000,000.00			\$1,000,000.00
Total From All Sources		\$1,014,622.00			\$93,156,016.07

LEA : 111444602 Mifflin County SD

Printed 12/19/2022 8:58:49 AM

	<u>General Fund (10)</u>	<u>Student Sponsored Activity Fund (21)</u>	<u>Public Purpose Trust (27)</u>	<u>Other Compt Approved (28)</u>	<u>Athletic / Activity (29)</u>	<u>Capital Reserve (690, 1850) (31)</u>
Revenue from Local Sources	37,841,920.39					
Revenue from State Sources	42,250,180.93					
Revenue from Federal Sources	12,049,292.75					
Other Financing Sources						
Total From All Sources	\$92,141,394.07					

LEA : 111444602 Mifflin County SD

Printed 12/19/2022 8:58:49 AM

	<u>Capital Reserve (1431)</u> <u>(32)</u>	<u>Other Capital Projects</u> <u>Fund (39)</u>	<u>Debt Service (40)</u>	<u>Permanent (90)</u>	<u>Total</u>
Revenue from Local Sources		14,622.00			37,856,542.39
Revenue from State Sources					42,250,180.93
Revenue from Federal Sources					12,049,292.75
Other Financing Sources		1,000,000.00			1,000,000.00
Total From All Sources		\$1,014,622.00			\$93,156,016.07

LEA : 111444602 Mifflin County SD

Printed 12/19/2022 8:58:52 AM

General Fund (10)

1000 Instruction	Total
100 Personnel Services – Salaries	
100 Personnel Services – Salaries	22,594,416.05
Total Personnel Services – Salaries	\$22,594,416.05
200 Personnel Services – Employee Benefits	
210 Group Insurance – Contracted Provider	6,818,654.05
220 Social Security Contributions	1,693,346.79
230 PSERS Retirement Contributions	7,893,106.43
250 Unemployment Compensation	30,477.54
260 Workers' Compensation	112,480.24
291 Other Retirement Plans	210,440.00
Total Personnel Services – Employee Benefits	\$16,758,505.05
300 Purchased Professional and Technical Services	
322 Professional Educational Services – Ius	101,971.21
323 Professional Educational Services – Other Educational Agencies	19,000.00
329 Professional Educational Services – Other	1,072,680.26
330 Other Professional Services	950.00
Total Purchased Professional and Technical Services	\$1,194,601.47
400 Purchased Property Services	
430 Repairs and Maintenance Services	53,456.89
440 Rentals	160,893.34
Total Purchased Property Services	\$214,350.23
500 Other Purchased Services	
510 Student Transportation Services	77,549.42
530 Communications	97,807.37
550 Printing and Binding	9,064.03
561 Tuition To Other School Districts Within the State	1,211,401.16
562 Tuition To Pennsylvania Charter Schools	3,327,594.73
564 Tuition To Career and Technology Centers	2,069,745.00
568 Tuition To Private Residential Rehabilitative Institutions (PRRI) [In-State] and Detention Centers	97,971.31
580 Travel	14,567.19
592 Services Purchased From Another LEA Within the State	4,978.00
594 IU Payment By Withholding for Institutionalized Children's Programs – Special Classes	1,536.21
Total Other Purchased Services	\$6,912,214.42
600 Supplies	
610 General Supplies	895,409.71
640 Books and Periodicals	334,390.00
650 Supplies & Fees – Technology Related	502,344.41
Total Supplies	\$1,732,144.12
800 Other Objects	
810 Dues and Fees	1,906.00
Total Other Objects	\$1,906.00
Total 1000 Instruction	\$49,408,137.34

LEA : 111444602 Mifflin County SD

Printed 12/19/2022 8:58:52 AM

General Fund (10)

1100 Regular Programs – Elementary / Secondary	Elementary	Secondary	Federal	Total
100 Personnel Services – Salaries				
100 Personnel Services – Salaries	6,895,599.12	5,868,205.14	2,697,836.83	15,461,641.09
Total Personnel Services – Salaries	\$6,895,599.12	\$5,868,205.14	\$2,697,836.83	\$15,461,641.09
200 Personnel Services – Employee Benefits				
210 Group Insurance – Contracted Provider	2,109,108.96	1,704,414.44	650,696.36	4,464,219.76
220 Social Security Contributions	514,333.82	439,988.09	204,118.60	1,158,440.51
230 PSERS Retirement Contributions	2,380,691.97	2,721,707.86	472,884.16	5,575,283.99
250 Unemployment Compensation	8,576.72	6,905.73	5,440.90	20,923.35
260 Workers' Compensation	34,368.27	29,340.97	13,564.90	77,274.14
291 Other Retirement Plans	65,142.50	75,502.50		140,645.00
Total Personnel Services – Employee Benefits	\$5,112,222.24	\$4,977,859.59	\$1,346,704.92	\$11,436,786.75
300 Purchased Professional and Technical Services				
323 Professional Educational Services – Other Educational Agencies		19,000.00		19,000.00
329 Professional Educational Services – Other	278,891.78	186,931.23	233,474.19	699,297.20
Total Purchased Professional and Technical Services	\$278,891.78	\$205,931.23	\$233,474.19	\$718,297.20
400 Purchased Property Services				
430 Repairs and Maintenance Services	27,890.62	22,797.28		50,687.90
440 Rentals	90,068.31	70,825.03		160,893.34
Total Purchased Property Services	\$117,958.93	\$93,622.31		\$211,581.24
500 Other Purchased Services				
510 Student Transportation Services	36,619.35	425.94		37,045.29
530 Communications	50,141.01	43,928.88		94,069.89
550 Printing and Binding	3,561.39	5,502.64		9,064.03
561 Tuition To Other School Districts Within the State		180,387.15		180,387.15
562 Tuition To Pennsylvania Charter Schools		2,099,332.01		2,099,332.01
580 Travel	3,271.94	1,740.18	315.21	5,327.33
Total Other Purchased Services	\$93,593.69	\$2,331,316.80	\$315.21	\$2,425,225.70
600 Supplies				
610 General Supplies	242,890.96	188,975.47	323,505.56	755,371.99
640 Books and Periodicals	26,161.75	6,326.82		32,488.57
650 Supplies & Fees – Technology Related	352,277.22	144,160.29	5,906.90	502,344.41
Total Supplies	\$621,329.93	\$339,462.58	\$329,412.46	\$1,290,204.97
Total 1100 Regular Programs – Elementary / Secondary	\$13,119,595.69	\$13,816,397.65	\$4,607,743.61	\$31,543,736.95

LEA : 111444602 Mifflin County SD

Printed 12/19/2022 8:58:52 AM

General Fund (10)

1110 Regular Programs

	Elementary	Secondary	Federal	Total
100 <u>Personnel Services – Salaries</u>				
100 Personnel Services – Salaries	6,895,599.12	5,868,205.14	1,315,379.20	14,079,183.46
Total Personnel Services – Salaries	\$6,895,599.12	\$5,868,205.14	\$1,315,379.20	\$14,079,183.46
200 <u>Personnel Services – Employee Benefits</u>				
210 Group Insurance – Contracted Provider	2,109,108.96	1,704,414.44	179,785.84	3,993,309.24
220 Social Security Contributions	514,333.82	439,988.09	99,448.22	1,053,770.13
230 PSERS Retirement Contributions	2,380,691.97	2,721,707.86	228,573.42	5,330,973.25
250 Unemployment Compensation	8,576.72	6,905.73	2,630.93	18,113.38
260 Workers' Compensation	34,368.27	29,340.97	6,541.09	70,250.33
291 Other Retirement Plans	65,142.50	75,502.50		140,645.00
Total Personnel Services – Employee Benefits	\$5,112,222.24	\$4,977,859.59	\$516,979.50	\$10,607,061.33
300 <u>Purchased Professional and Technical Services</u>				
323 Professional Educational Services – Other Educational Agencies		19,000.00		19,000.00
329 Professional Educational Services – Other	278,891.78	186,931.23	146,161.28	611,984.29
Total Purchased Professional and Technical Services	\$278,891.78	\$205,931.23	\$146,161.28	\$630,984.29
400 <u>Purchased Property Services</u>				
430 Repairs and Maintenance Services	27,890.62	22,797.28		50,687.90
440 Rentals	90,068.31	70,825.03		160,893.34
Total Purchased Property Services	\$117,958.93	\$93,622.31		\$211,581.24
500 <u>Other Purchased Services</u>				
510 Student Transportation Services	36,619.35	425.94		37,045.29
530 Communications	50,141.01	43,928.88		94,069.89
550 Printing and Binding	3,561.39	5,502.64		9,064.03
561 Tuition To Other School Districts Within the State		180,387.15		180,387.15
562 Tuition To Pennsylvania Charter Schools		2,099,332.01		2,099,332.01
580 Travel	3,271.94	1,740.18	315.21	5,327.33
Total Other Purchased Services	\$93,593.69	\$2,331,316.80	\$315.21	\$2,425,225.70
600 <u>Supplies</u>				
610 General Supplies	242,890.96	188,975.47	301,248.13	733,114.56
640 Books and Periodicals	26,161.75	6,326.82		32,488.57
650 Supplies & Fees – Technology Related	352,277.22	144,160.29	5,906.90	502,344.41
Total Supplies	\$621,329.93	\$339,462.58	\$307,155.03	\$1,267,947.54
Total 1110 Regular Programs	\$13,119,595.69	\$13,816,397.65	\$2,285,990.22	\$29,221,983.56

LEA : 111444602 Mifflin County SD

Printed 12/19/2022 8:58:52 AM

General Fund (10)

1190 Federally-Funded Regular Programs	<u>Elementary</u>	<u>Secondary</u>	<u>Federal</u>	<u>Total</u>
100 <u>Personnel Services – Salaries</u>				
100 Personnel Services – Salaries			1,382,457.63	1,382,457.63
Total Personnel Services – Salaries			\$1,382,457.63	\$1,382,457.63
200 <u>Personnel Services – Employee Benefits</u>				
210 Group Insurance – Contracted Provider			470,910.52	470,910.52
220 Social Security Contributions			104,670.38	104,670.38
230 PSERS Retirement Contributions			244,310.74	244,310.74
250 Unemployment Compensation			2,809.97	2,809.97
260 Workers' Compensation			7,023.81	7,023.81
Total Personnel Services – Employee Benefits			\$829,725.42	\$829,725.42
300 <u>Purchased Professional and Technical Services</u>				
329 Professional Educational Services – Other			87,312.91	87,312.91
Total Purchased Professional and Technical Services			\$87,312.91	\$87,312.91
600 <u>Supplies</u>				
610 General Supplies			22,257.43	22,257.43
Total Supplies			\$22,257.43	\$22,257.43
Total 1190 Federally-Funded Regular Programs			\$2,321,753.39	\$2,321,753.39

LEA : 111444602 Mifflin County SD

Printed 12/19/2022 8:58:52 AM

General Fund (10)

1200 Special Programs – Elementary / Secondary	Elementary	Secondary	Federal	Total
100 Personnel Services – Salaries				
100 Personnel Services – Salaries	2,802,955.91	2,084,022.32	737,822.40	5,624,800.63
Total Personnel Services – Salaries	\$2,802,955.91	\$2,084,022.32	\$737,822.40	\$5,624,800.63
200 Personnel Services – Employee Benefits				
210 Group Insurance – Contracted Provider	845,773.64	688,417.55	367,294.07	1,901,485.26
220 Social Security Contributions	209,866.17	157,042.99	55,555.19	422,464.35
230 PSERS Retirement Contributions	971,437.93	800,400.25	124,305.86	1,896,144.04
250 Unemployment Compensation	3,294.21	2,460.78	1,483.42	7,238.41
260 Workers' Compensation	13,996.40	10,457.63	3,709.55	28,163.58
291 Other Retirement Plans	17,065.00	17,118.13		34,183.13
Total Personnel Services – Employee Benefits	\$2,061,433.35	\$1,675,897.33	\$552,348.09	\$4,289,678.77
300 Purchased Professional and Technical Services				
322 Professional Educational Services – Ius	85,491.21		16,480.00	101,971.21
329 Professional Educational Services – Other	172,423.51	79,113.22	38,823.58	290,360.31
330 Other Professional Services			950.00	950.00
Total Purchased Professional and Technical Services	\$257,914.72	\$79,113.22	\$56,253.58	\$393,281.52
400 Purchased Property Services				
430 Repairs and Maintenance Services	178.99			178.99
Total Purchased Property Services	\$178.99			\$178.99
500 Other Purchased Services				
510 Student Transportation Services	405.06	40,099.07		40,504.13
530 Communications			3,221.40	3,221.40
561 Tuition To Other School Districts Within the State	329.39	1,018,468.40		1,018,797.79
562 Tuition To Pennsylvania Charter Schools		1,228,262.72		1,228,262.72
568 Tuition To Private Residential Rehabilitative Institutions (PRRI) [In-State] and Detention Centers	5,379.38	3,083.20		8,462.58
580 Travel	2,141.99	4,968.09		7,110.08
594 IU Payment By Withholding for Institutionalized Children’s Programs – Special Classes		1,536.21		1,536.21
Total Other Purchased Services	\$8,255.82	\$2,296,417.69	\$3,221.40	\$2,307,894.91
600 Supplies				
610 General Supplies	20,885.48	15,412.15	51,736.61	88,034.24
Total Supplies	\$20,885.48	\$15,412.15	\$51,736.61	\$88,034.24
800 Other Objects				
810 Dues and Fees	1,524.00	382.00		1,906.00
Total Other Objects	\$1,524.00	\$382.00		\$1,906.00
Total 1200 Special Programs – Elementary / Secondary	\$5,153,148.27	\$6,151,244.71	\$1,401,382.08	\$12,705,775.06

LEA : 111444602 Mifflin County SD

Printed 12/19/2022 8:58:52 AM

General Fund (10)

1210 Life Skills Support

	Elementary	Secondary	Federal	Total
100 Personnel Services – Salaries				
100 Personnel Services – Salaries	308,282.92	554,003.52	73,931.95	936,218.39
Total Personnel Services – Salaries	\$308,282.92	\$554,003.52	\$73,931.95	\$936,218.39
200 Personnel Services – Employee Benefits				
210 Group Insurance – Contracted Provider	150,585.62	292,559.27	45,505.85	488,650.74
220 Social Security Contributions	22,645.37	41,277.83	5,821.20	69,744.40
230 PSERS Retirement Contributions	113,409.43	190,465.83	13,114.21	316,989.47
250 Unemployment Compensation	358.01	651.85	155.76	1,165.62
260 Workers' Compensation	1,521.93	2,770.36	389.45	4,681.74
Total Personnel Services – Employee Benefits	\$288,520.36	\$527,725.14	\$64,986.47	\$881,231.97
300 Purchased Professional and Technical Services				
329 Professional Educational Services – Other	17,871.24	9,549.26		27,420.50
Total Purchased Professional and Technical Services	\$17,871.24	\$9,549.26		\$27,420.50
500 Other Purchased Services				
510 Student Transportation Services	202.53	497.53		700.06
580 Travel		424.07		424.07
Total Other Purchased Services	\$202.53	\$921.60		\$1,124.13
600 Supplies				
610 General Supplies	2,826.13	888.49		3,714.62
Total Supplies	\$2,826.13	\$888.49		\$3,714.62
Total 1210 Life Skills Support	\$617,703.18	\$1,093,088.01	\$138,918.42	\$1,849,709.61

LEA : 111444602 Mifflin County SD

Printed 12/19/2022 8:58:52 AM

General Fund (10)

1220 Sensory Support	Elementary	Secondary	Federal	Total
100 Personnel Services – Salaries				
100 Personnel Services – Salaries	453,825.62	101,514.43		555,340.05
Total Personnel Services – Salaries	\$453,825.62	\$101,514.43		\$555,340.05
200 Personnel Services – Employee Benefits				
210 Group Insurance – Contracted Provider	96,566.44	12,480.93		109,047.37
220 Social Security Contributions	34,213.40	7,678.16		41,891.56
230 PSERS Retirement Contributions	155,014.22	33,314.36		188,328.58
250 Unemployment Compensation	534.09	119.46		653.55
260 Workers' Compensation	2,268.93	507.50		2,776.43
291 Other Retirement Plans	7,997.50			7,997.50
Total Personnel Services – Employee Benefits	\$296,594.58	\$54,100.41		\$350,694.99
400 Purchased Property Services				
430 Repairs and Maintenance Services	178.99			178.99
Total Purchased Property Services	\$178.99			\$178.99
500 Other Purchased Services				
580 Travel	368.61	338.01		706.62
Total Other Purchased Services	\$368.61	\$338.01		\$706.62
600 Supplies				
610 General Supplies	6,589.04	2,794.86		9,383.90
Total Supplies	\$6,589.04	\$2,794.86		\$9,383.90
800 Other Objects				
810 Dues and Fees	1,524.00	382.00		1,906.00
Total Other Objects	\$1,524.00	\$382.00		\$1,906.00
Total 1220 Sensory Support	\$759,080.84	\$159,129.71		\$918,210.55

LEA : 111444602 Mifflin County SD

Printed 12/19/2022 8:58:52 AM

General Fund (10)

1230 Emotional Support

	<u>Elementary</u>	<u>Secondary</u>	<u>Federal</u>	<u>Total</u>
100 <u>Personnel Services – Salaries</u>				
100 Personnel Services – Salaries	892,660.44	307,095.65	156,894.38	1,356,650.47
Total Personnel Services – Salaries	\$892,660.44	\$307,095.65	\$156,894.38	\$1,356,650.47
200 <u>Personnel Services – Employee Benefits</u>				
210 Group Insurance – Contracted Provider	244,922.89	90,807.04	42,896.67	378,626.60
220 Social Security Contributions	67,189.06	23,118.37	11,882.89	102,190.32
230 PSERS Retirement Contributions	306,588.79	118,815.19	25,679.40	451,083.38
250 Unemployment Compensation	1,050.60	361.65	313.71	1,725.96
260 Workers' Compensation	4,463.75	1,535.78	784.47	6,784.00
Total Personnel Services – Employee Benefits	\$624,215.09	\$234,638.03	\$81,557.14	\$940,410.26
300 <u>Purchased Professional and Technical Services</u>				
329 Professional Educational Services – Other	20,938.93	4,310.69	1,141.45	26,391.07
330 Other Professional Services			950.00	950.00
Total Purchased Professional and Technical Services	\$20,938.93	\$4,310.69	\$2,091.45	\$27,341.07
500 <u>Other Purchased Services</u>				
510 Student Transportation Services	202.53	227.42		429.95
580 Travel	136.60	3,576.29		3,712.89
Total Other Purchased Services	\$339.13	\$3,803.71		\$4,142.84
600 <u>Supplies</u>				
610 General Supplies	5,422.83	1,756.39	45,231.57	52,410.79
Total Supplies	\$5,422.83	\$1,756.39	\$45,231.57	\$52,410.79
Total 1230 Emotional Support	\$1,543,576.42	\$551,604.47	\$285,774.54	\$2,380,955.43

LEA : 111444602 Mifflin County SD

Printed 12/19/2022 8:58:52 AM

General Fund (10)

1240 Academic Support

	Elementary	Secondary	Federal	Total
100 Personnel Services – Salaries				
100 Personnel Services – Salaries	1,062,046.85	1,089,028.64	506,996.07	2,658,071.56
Total Personnel Services – Salaries	\$1,062,046.85	\$1,089,028.64	\$506,996.07	\$2,658,071.56
200 Personnel Services – Employee Benefits				
210 Group Insurance – Contracted Provider	327,054.94	292,524.15	278,891.55	898,470.64
220 Social Security Contributions	79,304.66	82,493.41	37,851.10	199,649.17
230 PSERS Retirement Contributions	367,725.84	446,491.13	85,512.25	899,729.22
250 Unemployment Compensation	1,250.04	1,289.82	1,013.95	3,553.81
260 Workers' Compensation	5,311.07	5,482.05	2,535.63	13,328.75
291 Other Retirement Plans	9,067.50	17,118.13		26,185.63
Total Personnel Services – Employee Benefits	\$789,714.05	\$845,398.69	\$405,804.48	\$2,040,917.22
300 Purchased Professional and Technical Services				
329 Professional Educational Services – Other	99,462.09	31,102.02	37,682.13	168,246.24
Total Purchased Professional and Technical Services	\$99,462.09	\$31,102.02	\$37,682.13	\$168,246.24
500 Other Purchased Services				
510 Student Transportation Services		39,374.12		39,374.12
530 Communications			3,221.40	3,221.40
561 Tuition To Other School Districts Within the State	329.39	1,018,468.40		1,018,797.79
562 Tuition To Pennsylvania Charter Schools		1,228,262.72		1,228,262.72
568 Tuition To Private Residential Rehabilitative Institutions (PRRI) [In-State] and Detention Centers		3,083.20		3,083.20
580 Travel	345.56	137.75		483.31
Total Other Purchased Services	\$674.95	\$2,289,326.19	\$3,221.40	\$2,293,222.54
600 Supplies				
610 General Supplies	4,735.43	6,721.19	6,505.04	17,961.66
Total Supplies	\$4,735.43	\$6,721.19	\$6,505.04	\$17,961.66
Total 1240 Academic Support	\$1,956,633.37	\$4,261,576.73	\$960,209.12	\$7,178,419.22

LEA : 111444602 Mifflin County SD

Printed 12/19/2022 8:58:52 AM

General Fund (10)

1241 Learning Support – Public	Elementary	Secondary	Federal	Total
100 Personnel Services – Salaries				
100 Personnel Services – Salaries	1,019,032.52	1,071,882.97	506,996.07	2,597,911.56
Total Personnel Services – Salaries	\$1,019,032.52	\$1,071,882.97	\$506,996.07	\$2,597,911.56
200 Personnel Services – Employee Benefits				
210 Group Insurance – Contracted Provider	320,909.41	289,331.06	278,891.55	889,132.02
220 Social Security Contributions	76,143.71	81,233.56	37,851.10	195,228.37
230 PSERS Retirement Contributions	352,696.69	440,500.36	85,512.25	878,709.30
250 Unemployment Compensation	1,199.33	1,269.70	1,013.95	3,482.98
260 Workers' Compensation	5,095.92	5,396.38	2,535.63	13,027.93
291 Other Retirement Plans	9,067.50	17,118.13		26,185.63
Total Personnel Services – Employee Benefits	\$765,112.56	\$834,849.19	\$405,804.48	\$2,005,766.23
300 Purchased Professional and Technical Services				
329 Professional Educational Services – Other	99,462.09	31,102.02	37,682.13	168,246.24
Total Purchased Professional and Technical Services	\$99,462.09	\$31,102.02	\$37,682.13	\$168,246.24
500 Other Purchased Services				
510 Student Transportation Services		39,374.12		39,374.12
530 Communications			3,221.40	3,221.40
561 Tuition To Other School Districts Within the State	329.39	1,018,468.40		1,018,797.79
562 Tuition To Pennsylvania Charter Schools		1,228,262.72		1,228,262.72
568 Tuition To Private Residential Rehabilitative Institutions (PRRI) [In-State] and Detention Centers		3,083.20		3,083.20
Total Other Purchased Services	\$329.39	\$2,289,188.44	\$3,221.40	\$2,292,739.23
600 Supplies				
610 General Supplies	4,601.91	6,320.00	6,505.04	17,426.95
Total Supplies	\$4,601.91	\$6,320.00	\$6,505.04	\$17,426.95
Total 1241 Learning Support – Public	\$1,888,538.47	\$4,233,342.62	\$960,209.12	\$7,082,090.21

LEA : 111444602 Mifflin County SD

Printed 12/19/2022 8:58:52 AM

General Fund (10)

1243 Gifted Support

	<u>Elementary</u>	<u>Secondary</u>	<u>Federal</u>	<u>Total</u>
100 <u>Personnel Services – Salaries</u>				
100 Personnel Services – Salaries	43,014.33	17,145.67		60,160.00
Total Personnel Services – Salaries	\$43,014.33	\$17,145.67		\$60,160.00
200 <u>Personnel Services – Employee Benefits</u>				
210 Group Insurance – Contracted Provider	6,145.53	3,193.09		9,338.62
220 Social Security Contributions	3,160.95	1,259.85		4,420.80
230 PSERS Retirement Contributions	15,029.15	5,990.77		21,019.92
250 Unemployment Compensation	50.71	20.12		70.83
260 Workers' Compensation	215.15	85.67		300.82
Total Personnel Services – Employee Benefits	\$24,601.49	\$10,549.50		\$35,150.99
500 <u>Other Purchased Services</u>				
580 Travel	345.56	137.75		483.31
Total Other Purchased Services	\$345.56	\$137.75		\$483.31
600 <u>Supplies</u>				
610 General Supplies	133.52	401.19		534.71
Total Supplies	\$133.52	\$401.19		\$534.71
Total 1243 Gifted Support	\$68,094.90	\$28,234.11		\$96,329.01

LEA : 111444602 Mifflin County SD

Printed 12/19/2022 8:58:52 AM

General Fund (10)

1260 Physical Support	Elementary	Secondary	Federal	Total
100 Personnel Services – Salaries				
100 Personnel Services – Salaries	86,140.08	32,380.08		118,520.16
Total Personnel Services – Salaries	\$86,140.08	\$32,380.08		\$118,520.16
200 Personnel Services – Employee Benefits				
210 Group Insurance – Contracted Provider	26,643.75	46.16		26,689.91
220 Social Security Contributions	6,513.68	2,475.22		8,988.90
230 PSERS Retirement Contributions	28,699.65	11,313.74		40,013.39
250 Unemployment Compensation	101.47	38.00		139.47
260 Workers' Compensation	430.72	161.94		592.66
Total Personnel Services – Employee Benefits	\$62,389.27	\$14,035.06		\$76,424.33
300 Purchased Professional and Technical Services				
329 Professional Educational Services – Other	34,151.25	34,151.25		68,302.50
Total Purchased Professional and Technical Services	\$34,151.25	\$34,151.25		\$68,302.50
500 Other Purchased Services				
580 Travel	1,291.22	491.97		1,783.19
Total Other Purchased Services	\$1,291.22	\$491.97		\$1,783.19
600 Supplies				
610 General Supplies	1,312.05	3,251.22		4,563.27
Total Supplies	\$1,312.05	\$3,251.22		\$4,563.27
Total 1260 Physical Support	\$185,283.87	\$84,309.58		\$269,593.45

LEA : 111444602 Mifflin County SD

Printed 12/19/2022 8:58:52 AM

General Fund (10)

1290 Special Programs - Other Support	<u>Elementary</u>	<u>Secondary</u>	<u>Federal</u>	<u>Total</u>
300 <u>Purchased Professional and Technical Services</u>				
322 Professional Educational Services – Ius	85,491.21		16,480.00	101,971.21
Total Purchased Professional and Technical Services	\$85,491.21		\$16,480.00	\$101,971.21
500 <u>Other Purchased Services</u>				
568 Tuition To Private Residential Rehabilitative Institutions (PRRI) [In-State] and Detention Centers	5,379.38			5,379.38
594 IU Payment By Withholding for Institutionalized Children's Programs – Special Classes		1,536.21		1,536.21
Total Other Purchased Services	\$5,379.38	\$1,536.21		\$6,915.59
Total 1290 Special Programs - Other Support	\$90,870.59	\$1,536.21	\$16,480.00	\$108,886.80

LEA : 111444602 Mifflin County SD

Printed 12/19/2022 8:58:52 AM

General Fund (10)

1300 Vocational Education

	Elementary	Secondary	Federal	Total
100 <u>Personnel Services – Salaries</u>				
100 Personnel Services – Salaries		820,275.74	95,370.00	915,645.74
Total Personnel Services – Salaries		\$820,275.74	\$95,370.00	\$915,645.74
200 <u>Personnel Services – Employee Benefits</u>				
210 Group Insurance – Contracted Provider		303,077.36	16,424.52	319,501.88
220 Social Security Contributions		60,800.43	7,125.85	67,926.28
230 PSERS Retirement Contributions		293,540.22	16,661.16	310,201.38
250 Unemployment Compensation		965.24	190.63	1,155.87
260 Workers' Compensation		4,101.74	233.48	4,335.22
291 Other Retirement Plans		34,607.50		34,607.50
Total Personnel Services – Employee Benefits		\$697,092.49	\$40,635.64	\$737,728.13
300 <u>Purchased Professional and Technical Services</u>				
329 Professional Educational Services – Other		31,944.58	1,176.92	33,121.50
Total Purchased Professional and Technical Services		\$31,944.58	\$1,176.92	\$33,121.50
500 <u>Other Purchased Services</u>				
564 Tuition To Career and Technology Centers		2,069,745.00		2,069,745.00
Total Other Purchased Services		\$2,069,745.00		\$2,069,745.00
600 <u>Supplies</u>				
610 General Supplies		48,595.84		48,595.84
Total Supplies		\$48,595.84		\$48,595.84
Total 1300 Vocational Education		\$3,667,653.65	\$137,182.56	\$3,804,836.21

LEA : 111444602 Mifflin County SD

Printed 12/19/2022 8:58:52 AM

General Fund (10)				
1400 Other Instructional Programs – Elementary / Secondary	<u>Elementary</u>	<u>Secondary</u>	<u>Federal</u>	<u>Total</u>
100 <u>Personnel Services – Salaries</u>				
100 Personnel Services – Salaries	10,569.05	19,260.14	507,339.40	537,168.59
Total Personnel Services – Salaries	\$10,569.05	\$19,260.14	\$507,339.40	\$537,168.59
200 <u>Personnel Services – Employee Benefits</u>				
210 Group Insurance – Contracted Provider	8,122.70	10,614.01	88,128.21	106,864.92
220 Social Security Contributions	807.99	1,479.99	38,141.94	40,429.92
230 PSERS Retirement Contributions	2,295.23	12,194.25	87,351.06	101,840.54
250 Unemployment Compensation	12.43	22.67	1,014.56	1,049.66
260 Workers' Compensation	52.78	96.31	2,282.35	2,431.44
291 Other Retirement Plans		1,004.37		1,004.37
Total Personnel Services – Employee Benefits	\$11,291.13	\$25,411.60	\$216,918.12	\$253,620.85
300 <u>Purchased Professional and Technical Services</u>				
329 Professional Educational Services – Other	139.92		49,761.33	49,901.25
Total Purchased Professional and Technical Services	\$139.92		\$49,761.33	\$49,901.25
400 <u>Purchased Property Services</u>				
430 Repairs and Maintenance Services		2,590.00		2,590.00
Total Purchased Property Services		\$2,590.00		\$2,590.00
500 <u>Other Purchased Services</u>				
530 Communications		516.08		516.08
561 Tuition To Other School Districts Within the State		12,216.22		12,216.22
568 Tuition To Private Residential Rehabilitative Institutions (PRRI) [In-State] and Detention Centers		89,508.73		89,508.73
Total Other Purchased Services		\$102,241.03		\$102,241.03
600 <u>Supplies</u>				
610 General Supplies		2,478.40		2,478.40
640 Books and Periodicals	88,906.00	212,995.43		301,901.43
Total Supplies	\$88,906.00	\$215,473.83		\$304,379.83
Total 1400 Other Instructional Programs – Elementary / Secondary	\$110,906.10	\$364,976.60	\$774,018.85	\$1,249,901.55

LEA : 111444602 Mifflin County SD

Printed 12/19/2022 8:58:52 AM

General Fund (10)

1430 Homebound Instruction	<u>Elementary</u>	<u>Secondary</u>	<u>Federal</u>	<u>Total</u>
100 <u>Personnel Services – Salaries</u>				
100 Personnel Services – Salaries	323.00			323.00
Total Personnel Services – Salaries	\$323.00			\$323.00
200 <u>Personnel Services – Employee Benefits</u>				
220 Social Security Contributions	24.25			24.25
230 PSERS Retirement Contributions	112.85			112.85
250 Unemployment Compensation	0.38			0.38
260 Workers' Compensation	1.61			1.61
Total Personnel Services – Employee Benefits	\$139.09			\$139.09
Total 1430 Homebound Instruction	\$462.09			\$462.09

LEA : 111444602 Mifflin County SD

Printed 12/19/2022 8:58:52 AM

General Fund (10)				
1440 Alternative Regular Education Programs	<u>Elementary</u>	<u>Secondary</u>	<u>Federal</u>	<u>Total</u>
100 <u>Personnel Services – Salaries</u>				
100 Personnel Services – Salaries	10,246.05	19,260.14	507,339.40	536,845.59
Total Personnel Services – Salaries	\$10,246.05	\$19,260.14	\$507,339.40	\$536,845.59
200 <u>Personnel Services – Employee Benefits</u>				
210 Group Insurance – Contracted Provider	8,122.70	10,614.01	88,128.21	106,864.92
220 Social Security Contributions	783.74	1,479.99	38,141.94	40,405.67
230 PSERS Retirement Contributions	2,182.38	12,194.25	87,351.06	101,727.69
250 Unemployment Compensation	12.05	22.67	1,014.56	1,049.28
260 Workers' Compensation	51.17	96.31	2,282.35	2,429.83
291 Other Retirement Plans		1,004.37		1,004.37
Total Personnel Services – Employee Benefits	\$11,152.04	\$25,411.60	\$216,918.12	\$253,481.76
300 <u>Purchased Professional and Technical Services</u>				
329 Professional Educational Services – Other	139.92		49,761.33	49,901.25
Total Purchased Professional and Technical Services	\$139.92		\$49,761.33	\$49,901.25
400 <u>Purchased Property Services</u>				
430 Repairs and Maintenance Services		2,590.00		2,590.00
Total Purchased Property Services		\$2,590.00		\$2,590.00
500 <u>Other Purchased Services</u>				
530 Communications		516.08		516.08
561 Tuition To Other School Districts Within the State		12,216.22		12,216.22
568 Tuition To Private Residential Rehabilitative Institutions (PRRI) [In-State] and Detention Centers		89,508.73		89,508.73
Total Other Purchased Services		\$102,241.03		\$102,241.03
600 <u>Supplies</u>				
610 General Supplies		2,478.40		2,478.40
640 Books and Periodicals	88,906.00	212,995.43		301,901.43
Total Supplies	\$88,906.00	\$215,473.83		\$304,379.83
Total 1440 Alternative Regular Education Programs	\$110,444.01	\$364,976.60	\$774,018.85	\$1,249,439.46

LEA : 111444602 Mifflin County SD

Printed 12/19/2022 8:58:52 AM

General Fund (10)

1441 Adjudicated / Court-Placed Programs

	<u>Elementary</u>	<u>Secondary</u>	<u>Federal</u>	<u>Total</u>
500 <u>Other Purchased Services</u>				
561 Tuition To Other School Districts Within the State		12,216.22		12,216.22
568 Tuition To Private Residential Rehabilitative Institutions (PRRI) [In-State] and Detention Centers		17,628.73		17,628.73
Total Other Purchased Services		\$29,844.95		\$29,844.95
Total 1441 Adjudicated / Court-Placed Programs		\$29,844.95		\$29,844.95

LEA : 111444602 Mifflin County SD

Printed 12/19/2022 8:58:52 AM

General Fund (10)				
1442 Alternative Education Programs	<u>Elementary</u>	<u>Secondary</u>	<u>Federal</u>	<u>Total</u>
100 <u>Personnel Services – Salaries</u>				
100 Personnel Services – Salaries	10,246.05	19,260.14	507,339.40	536,845.59
Total Personnel Services – Salaries	\$10,246.05	\$19,260.14	\$507,339.40	\$536,845.59
200 <u>Personnel Services – Employee Benefits</u>				
210 Group Insurance – Contracted Provider	8,122.70	10,614.01	88,128.21	106,864.92
220 Social Security Contributions	783.74	1,479.99	38,141.94	40,405.67
230 PSERS Retirement Contributions	2,182.38	12,194.25	87,351.06	101,727.69
250 Unemployment Compensation	12.05	22.67	1,014.56	1,049.28
260 Workers' Compensation	51.17	96.31	2,282.35	2,429.83
291 Other Retirement Plans		1,004.37		1,004.37
Total Personnel Services – Employee Benefits	\$11,152.04	\$25,411.60	\$216,918.12	\$253,481.76
300 <u>Purchased Professional and Technical Services</u>				
329 Professional Educational Services – Other	139.92		49,761.33	49,901.25
Total Purchased Professional and Technical Services	\$139.92		\$49,761.33	\$49,901.25
400 <u>Purchased Property Services</u>				
430 Repairs and Maintenance Services		2,590.00		2,590.00
Total Purchased Property Services		\$2,590.00		\$2,590.00
500 <u>Other Purchased Services</u>				
530 Communications		516.08		516.08
568 Tuition To Private Residential Rehabilitative Institutions (PRRI) [In-State] and Detention Centers		71,880.00		71,880.00
Total Other Purchased Services		\$72,396.08		\$72,396.08
600 <u>Supplies</u>				
610 General Supplies		2,478.40		2,478.40
640 Books and Periodicals	88,906.00	212,995.43		301,901.43
Total Supplies	\$88,906.00	\$215,473.83		\$304,379.83
Total 1442 Alternative Education Programs	\$110,444.01	\$335,131.65	\$774,018.85	\$1,219,594.51

LEA : 111444602 Mifflin County SD

Printed 12/19/2022 8:58:52 AM

General Fund (10)

1500 Nonpublic School Programs	<u>Elementary</u>	<u>Secondary</u>	<u>Federal</u>	<u>Total</u>
100 <u>Personnel Services – Salaries</u>				
100 Personnel Services – Salaries			55,160.00	55,160.00
Total Personnel Services – Salaries			\$55,160.00	\$55,160.00
200 <u>Personnel Services – Employee Benefits</u>				
210 Group Insurance – Contracted Provider			26,582.23	26,582.23
220 Social Security Contributions			4,085.73	4,085.73
230 PSERS Retirement Contributions			9,636.48	9,636.48
250 Unemployment Compensation			110.25	110.25
260 Workers' Compensation			275.86	275.86
Total Personnel Services – Employee Benefits			\$40,690.55	\$40,690.55
500 <u>Other Purchased Services</u>				
580 Travel			2,129.78	2,129.78
592 Services Purchased From Another LEA Within the State			4,978.00	4,978.00
Total Other Purchased Services			\$7,107.78	\$7,107.78
600 <u>Supplies</u>				
610 General Supplies			929.24	929.24
Total Supplies			\$929.24	\$929.24
Total 1500 Nonpublic School Programs			\$103,887.57	\$103,887.57

LEA : 111444602 Mifflin County SD

Printed 12/19/2022 8:58:55 AM

General Fund (10)

2000 Support Services

Total

100	<u>Personnel Services – Salaries</u>	
100	Personnel Services – Salaries	8,139,602.39
Total Personnel Services – Salaries		\$8,139,602.39
200	<u>Personnel Services – Employee Benefits</u>	
210	Group Insurance – Contracted Provider	2,518,369.82
220	Social Security Contributions	612,888.25
230	PSERS Retirement Contributions	2,688,899.09
240	Tuition Reimbursement	204,502.00
250	Unemployment Compensation	10,077.54
260	Workers' Compensation	40,695.74
291	Other Retirement Plans	113,119.91
Total Personnel Services – Employee Benefits		\$6,188,552.35
300	<u>Purchased Professional and Technical Services</u>	
310	Official / Administrative Services	222,885.02
329	Professional Educational Services – Other	223,639.68
330	Other Professional Services	119,984.70
340	Technical Services	100,675.36
350	Security / Safety Services	131,618.92
360	Employee Training and Development Services	91,761.42
390	Other Purchased Professional and Technical Services	1,671.25
Total Purchased Professional and Technical Services		\$892,236.35
400	<u>Purchased Property Services</u>	
410	Cleaning Services	35,099.09
420	Utility Services	96,287.72
430	Repairs and Maintenance Services	700,788.79
440	Rentals	2,495.67
450	Construction Services	1,142,722.89
Total Purchased Property Services		\$1,977,394.16
500	<u>Other Purchased Services</u>	
513	Contracted Carriers	4,588,486.86
516	Student Transportation Services From the IU	98,308.83
519	Student Transportation Services From Other Sources	38,854.70
520	Insurance – General	17,555.00
523	General Property and Liability Insurance	228,126.00
529	Other Insurance	36,301.00
530	Communications	62,321.81
549	Other Advertising/Public Relations	19,123.24
550	Printing and Binding	633.15
580	Travel	22,801.44
Total Other Purchased Services		\$5,112,512.03
600	<u>Supplies</u>	
610	General Supplies	602,657.26
620	Energy	835,150.49
640	Books and Periodicals	31,624.46

LEA : 111444602 Mifflin County SD

Printed 12/19/2022 8:58:55 AM

General Fund (10)

2000 Support Services

Total

600 <u>Supplies</u>	
650 Supplies & Fees – Technology Related	2,516,550.19
Total Supplies	\$3,985,982.40
700 <u>Property</u>	
752 Capital Equipment – Original and Additional	82,820.26
762 Capitalized Equipment - Replacement	34,310.88
766 Capitalized Technology Equipment – Replacement	836,145.55
768 Capitalized Technology Software - Replacement	8,897.36
Total Property	\$962,174.05
800 <u>Other Objects</u>	
810 Dues and Fees	40,415.06
820 Claims and Judgments Against the LEA	162.69
Total Other Objects	\$40,577.75
Total 2000 Support Services	\$27,299,031.48

LEA : 111444602 Mifflin County SD

Printed 12/19/2022 8:58:55 AM

General Fund (10)

2100 Support Services – Students	Elementary	Secondary	Federal	Total
100 Personnel Services – Salaries				
100 Personnel Services – Salaries	469,423.90	535,619.46	269,533.19	1,313,483.54
Total Personnel Services – Salaries	\$469,423.90	\$535,619.46	\$269,533.19	\$1,313,483.54
200 Personnel Services – Employee Benefits				
210 Group Insurance – Contracted Provider	112,050.67	164,792.50	74,823.12	366,603.54
220 Social Security Contributions	35,232.03	39,803.94	20,289.49	98,249.86
230 PSERS Retirement Contributions	163,318.31	185,268.38	46,456.92	408,637.79
250 Unemployment Compensation	552.55	630.26	539.14	1,799.78
260 Workers' Compensation	2,347.11	2,677.81	1,347.46	6,566.92
Total Personnel Services – Employee Benefits	\$313,500.67	\$393,172.89	\$143,456.13	\$881,857.89
300 Purchased Professional and Technical Services				
329 Professional Educational Services – Other	57,350.69	128,312.59	5,001.75	190,665.03
Total Purchased Professional and Technical Services	\$57,350.69	\$128,312.59	\$5,001.75	\$190,665.03
500 Other Purchased Services				
530 Communications			1,537.13	2,146.59
580 Travel	633.91	32.26	1,376.05	2,197.66
Total Other Purchased Services	\$633.91	\$32.26	\$2,913.18	\$4,344.25
600 Supplies				
610 General Supplies	3,285.43	83,331.25	34,074.49	120,846.51
Total Supplies	\$3,285.43	\$83,331.25	\$34,074.49	\$120,846.51
Total 2100 Support Services – Students	\$844,194.60	\$1,140,468.45	\$454,978.74	\$2,511,197.22

LEA : 111444602 Mifflin County SD

Printed 12/19/2022 8:58:55 AM

General Fund (10)

2120 Guidance Services	Elementary	Secondary	Federal	Total
100 Personnel Services – Salaries				
100 Personnel Services – Salaries	241,488.55	448,941.48	173,071.27	863,501.30
Total Personnel Services – Salaries	\$241,488.55	\$448,941.48	\$173,071.27	\$863,501.30
200 Personnel Services – Employee Benefits				
210 Group Insurance – Contracted Provider	80,974.18	139,119.69	29,586.24	249,680.11
220 Social Security Contributions	18,104.92	33,446.42	13,096.65	64,647.99
230 PSERS Retirement Contributions	83,677.38	154,983.00	29,600.68	268,261.06
250 Unemployment Compensation	284.15	528.25	346.29	1,158.69
260 Workers' Compensation	1,207.40	2,244.35	865.12	4,316.87
Total Personnel Services – Employee Benefits	\$184,248.03	\$330,321.71	\$73,494.98	\$588,064.72
300 Purchased Professional and Technical Services				
329 Professional Educational Services – Other		10,857.75	201.75	11,059.50
Total Purchased Professional and Technical Services		\$10,857.75	\$201.75	\$11,059.50
500 Other Purchased Services				
580 Travel		32.26		32.26
Total Other Purchased Services		\$32.26		\$32.26
600 Supplies				
610 General Supplies	1,102.02	670.85		1,772.87
Total Supplies	\$1,102.02	\$670.85		\$1,772.87
Total 2120 Guidance Services	\$426,838.60	\$790,824.05	\$246,768.00	\$1,464,430.65

LEA : 111444602 Mifflin County SD

Printed 12/19/2022 8:58:55 AM

General Fund (10)

2140 Psychological Services	Elementary	Secondary	Federal	Total
100 Personnel Services – Salaries				
100 Personnel Services – Salaries	227,935.35	86,677.98		314,613.33
Total Personnel Services – Salaries	\$227,935.35	\$86,677.98		\$314,613.33
200 Personnel Services – Employee Benefits				
210 Group Insurance – Contracted Provider	31,076.49	25,672.81		56,749.30
220 Social Security Contributions	17,127.11	6,357.52		23,484.63
230 PSERS Retirement Contributions	79,640.93	30,285.38		109,926.31
250 Unemployment Compensation	268.40	102.01		370.41
260 Workers' Compensation	1,139.71	433.46		1,573.17
Total Personnel Services – Employee Benefits	\$129,252.64	\$62,851.18		\$192,103.82
300 Purchased Professional and Technical Services				
329 Professional Educational Services – Other	37,117.07	97,340.12		134,457.19
Total Purchased Professional and Technical Services	\$37,117.07	\$97,340.12		\$134,457.19
500 Other Purchased Services				
580 Travel	633.91			633.91
Total Other Purchased Services	\$633.91			\$633.91
600 Supplies				
610 General Supplies	2,183.41	82,660.40	25,149.00	109,992.81
Total Supplies	\$2,183.41	\$82,660.40	\$25,149.00	\$109,992.81
Total 2140 Psychological Services	\$397,122.38	\$329,529.68	\$25,149.00	\$751,801.06

LEA : 111444602 Mifflin County SD

Printed 12/19/2022 8:58:55 AM

General Fund (10)

2160 Social Work Services

	<u>Elementary</u>	<u>Secondary</u>	<u>Federal</u>	<u>Total</u>
100 <u>Personnel Services – Salaries</u>				
100 Personnel Services – Salaries			96,461.92	135,368.91
Total Personnel Services – Salaries			\$96,461.92	\$135,368.91
200 <u>Personnel Services – Employee Benefits</u>				
210 Group Insurance – Contracted Provider			45,236.88	60,174.13
220 Social Security Contributions			7,192.84	10,117.24
230 PSERS Retirement Contributions			16,856.24	30,450.42
250 Unemployment Compensation			192.85	270.68
260 Workers' Compensation			482.34	676.88
Total Personnel Services – Employee Benefits			\$69,961.15	\$101,689.35
300 <u>Purchased Professional and Technical Services</u>				
329 Professional Educational Services – Other			4,800.00	4,800.00
Total Purchased Professional and Technical Services			\$4,800.00	\$4,800.00
500 <u>Other Purchased Services</u>				
530 Communications			1,537.13	2,146.59
580 Travel			1,376.05	1,531.49
Total Other Purchased Services			\$2,913.18	\$3,678.08
600 <u>Supplies</u>				
610 General Supplies			8,925.49	9,080.83
Total Supplies			\$8,925.49	\$9,080.83
Total 2160 Social Work Services			\$183,061.74	\$254,617.17

LEA : 111444602 Mifflin County SD

Printed 12/19/2022 8:58:55 AM

General Fund (10)

2190 Other Student Services	<u>Elementary</u>	<u>Secondary</u>	<u>Federal</u>	<u>Total</u>
300 <u>Purchased Professional and Technical Services</u>				
329 Professional Educational Services – Other	20,233.62	20,114.72		40,348.34
Total Purchased Professional and Technical Services	\$20,233.62	\$20,114.72		\$40,348.34
Total 2190 Other Student Services	\$20,233.62	\$20,114.72		\$40,348.34

LEA : 111444602 Mifflin County SD

Printed 12/19/2022 8:58:55 AM

General Fund (10)

2200 Support Services – Instructional Staff

	Elementary	Secondary	Federal	Total
100 Personnel Services – Salaries				
100 Personnel Services – Salaries	379,688.43	229,190.25	70,604.88	679,483.56
Total Personnel Services – Salaries	\$379,688.43	\$229,190.25	\$70,604.88	\$679,483.56
200 Personnel Services – Employee Benefits				
210 Group Insurance – Contracted Provider	69,647.32	19,900.72	16,771.69	106,319.73
220 Social Security Contributions	28,691.92	17,371.33	5,353.92	51,417.17
230 PSERS Retirement Contributions	132,628.10	81,546.68	12,191.11	226,365.89
240 Tuition Reimbursement	93,471.00	96,024.00		189,495.00
250 Unemployment Compensation	446.30	269.35	141.40	857.05
260 Workers' Compensation	1,897.93	1,144.66	352.94	3,395.53
291 Other Retirement Plans		3,150.00		3,150.00
Total Personnel Services – Employee Benefits	\$326,782.57	\$219,406.74	\$34,811.06	\$581,000.37
300 Purchased Professional and Technical Services				
329 Professional Educational Services – Other	7,528.04	5,989.59		13,517.63
360 Employee Training and Development Services	14,468.17	8,542.83	67,323.42	90,334.42
Total Purchased Professional and Technical Services	\$21,996.21	\$14,532.42	\$67,323.42	\$103,852.05
500 Other Purchased Services				
530 Communications	833.30	832.65		1,665.95
580 Travel	1,640.48	2,450.75	7,228.92	11,320.15
Total Other Purchased Services	\$2,473.78	\$3,283.40	\$7,228.92	\$12,986.10
600 Supplies				
610 General Supplies	6,196.18	2,680.11	24,682.75	33,559.04
640 Books and Periodicals	24,150.55	6,973.91	500.00	31,624.46
Total Supplies	\$30,346.73	\$9,654.02	\$25,182.75	\$65,183.50
800 Other Objects				
810 Dues and Fees	385.00	385.00		770.00
Total Other Objects	\$385.00	\$385.00		\$770.00
Total 2200 Support Services – Instructional Staff	\$761,672.72	\$476,451.83	\$205,151.03	\$1,443,275.58

LEA : 111444602 Mifflin County SD

Printed 12/19/2022 8:58:55 AM

General Fund (10)

2250 School Library Services	Elementary	Secondary	Federal	Total
100 Personnel Services – Salaries				
100 Personnel Services – Salaries	251,439.10	115,356.72		366,795.82
Total Personnel Services – Salaries	\$251,439.10	\$115,356.72		\$366,795.82
200 Personnel Services – Employee Benefits				
210 Group Insurance – Contracted Provider	57,882.89	8,136.30		66,019.19
220 Social Security Contributions	18,957.69	8,720.58		27,678.27
230 PSERS Retirement Contributions	86,455.18	40,305.46		126,760.64
250 Unemployment Compensation	295.91	135.70		431.61
260 Workers' Compensation	1,257.12	576.67		1,833.79
291 Other Retirement Plans		2,500.00		2,500.00
Total Personnel Services – Employee Benefits	\$164,848.79	\$60,374.71		\$225,223.50
300 Purchased Professional and Technical Services				
329 Professional Educational Services – Other	7,528.04	5,989.59		13,517.63
Total Purchased Professional and Technical Services	\$7,528.04	\$5,989.59		\$13,517.63
600 Supplies				
610 General Supplies	5,767.41	1,878.76		7,646.17
640 Books and Periodicals	24,150.55	6,973.91		31,124.46
Total Supplies	\$29,917.96	\$8,852.67		\$38,770.63
Total 2250 School Library Services	\$453,733.89	\$190,573.69		\$644,307.58

LEA : 111444602 Mifflin County SD

Printed 12/19/2022 8:58:55 AM

General Fund (10)

2260 Instruction and Curriculum Development Services

	<u>Elementary</u>	<u>Secondary</u>	<u>Federal</u>	<u>Total</u>
100 <u>Personnel Services – Salaries</u>				
100 Personnel Services – Salaries	98,906.58	90,489.28	70,001.88	259,397.74
Total Personnel Services – Salaries	\$98,906.58	\$90,489.28	\$70,001.88	\$259,397.74
200 <u>Personnel Services – Employee Benefits</u>				
210 Group Insurance – Contracted Provider	11,764.43	11,764.42	16,771.69	40,300.54
220 Social Security Contributions	7,534.00	6,895.58	5,307.79	19,737.37
230 PSERS Retirement Contributions	35,920.49	32,979.43	12,085.78	80,985.70
250 Unemployment Compensation	116.09	106.38	140.20	362.67
260 Workers' Compensation	494.09	452.44	349.93	1,296.46
291 Other Retirement Plans		650.00		650.00
Total Personnel Services – Employee Benefits	\$55,829.10	\$52,848.25	\$34,655.39	\$143,332.74
500 <u>Other Purchased Services</u>				
530 Communications	833.30	832.65		1,665.95
580 Travel	202.09	202.08		404.17
Total Other Purchased Services	\$1,035.39	\$1,034.73		\$2,070.12
600 <u>Supplies</u>				
610 General Supplies	344.06	344.06		688.12
640 Books and Periodicals			500.00	500.00
Total Supplies	\$344.06	\$344.06	\$500.00	\$1,188.12
800 <u>Other Objects</u>				
810 Dues and Fees	385.00	385.00		770.00
Total Other Objects	\$385.00	\$385.00		\$770.00
Total 2260 Instruction and Curriculum Development Services	\$156,500.13	\$145,101.32	\$105,157.27	\$406,758.72

LEA : 111444602 Mifflin County SD

Printed 12/19/2022 8:58:55 AM

General Fund (10)

2270 Instructional Staff Professional Development Services	Elementary	Secondary	Federal	Total
100 Personnel Services – Salaries				
100 Personnel Services – Salaries	29,342.75	23,344.25	603.00	53,290.00
Total Personnel Services – Salaries	\$29,342.75	\$23,344.25	\$603.00	\$53,290.00
200 Personnel Services – Employee Benefits				
220 Social Security Contributions	2,200.23	1,755.17	46.13	4,001.53
230 PSERS Retirement Contributions	10,252.43	8,261.79	105.33	18,619.55
240 Tuition Reimbursement	93,471.00	96,024.00		189,495.00
250 Unemployment Compensation	34.30	27.27	1.20	62.77
260 Workers' Compensation	146.72	115.55	3.01	265.28
Total Personnel Services – Employee Benefits	\$106,104.68	\$106,183.78	\$155.67	\$212,444.13
300 Purchased Professional and Technical Services				
360 Employee Training and Development Services	14,468.17	8,542.83	48,095.24	71,106.24
Total Purchased Professional and Technical Services	\$14,468.17	\$8,542.83	\$48,095.24	\$71,106.24
500 Other Purchased Services				
580 Travel	1,438.39	2,248.67	3,838.91	7,525.97
Total Other Purchased Services	\$1,438.39	\$2,248.67	\$3,838.91	\$7,525.97
600 Supplies				
610 General Supplies	84.71	457.29		542.00
Total Supplies	\$84.71	\$457.29		\$542.00
Total 2270 Instructional Staff Professional Development Services	\$151,438.70	\$140,776.82	\$52,692.82	\$344,908.34

LEA : 111444602 Mifflin County SD

Printed 12/19/2022 8:58:55 AM

General Fund (10)

2280 Nonpublic Support Services	<u>Elementary</u>	<u>Secondary</u>	<u>Federal</u>	<u>Total</u>
300 <u>Purchased Professional and Technical Services</u>				
360 Employee Training and Development Services			19,228.18	19,228.18
Total Purchased Professional and Technical Services			\$19,228.18	\$19,228.18
500 <u>Other Purchased Services</u>				
580 Travel			3,390.01	3,390.01
Total Other Purchased Services			\$3,390.01	\$3,390.01
600 <u>Supplies</u>				
610 General Supplies			24,682.75	24,682.75
Total Supplies			\$24,682.75	\$24,682.75
Total 2280 Nonpublic Support Services			\$47,300.94	\$47,300.94

LEA : 111444602 Mifflin County SD

Printed 12/19/2022 8:58:55 AM

General Fund (10)

2300 Support Services – Administration	Elementary	Secondary	Federal	Total
100 Personnel Services – Salaries				
100 Personnel Services – Salaries	1,000,803.88	895,351.79	24,247.63	2,401,851.62
Total Personnel Services – Salaries	\$1,000,803.88	\$895,351.79	\$24,247.63	\$2,401,851.62
200 Personnel Services – Employee Benefits				
210 Group Insurance – Contracted Provider	297,703.69	242,448.25		669,914.59
220 Social Security Contributions	75,503.96	67,979.57	1,854.76	181,777.85
230 PSERS Retirement Contributions	348,698.07	312,741.45	4,241.51	807,772.57
250 Unemployment Compensation	1,178.18	1,053.66	48.43	2,761.82
260 Workers' Compensation	5,003.37	4,476.88	121.24	12,009.11
291 Other Retirement Plans	5,875.00	52,383.44		66,383.44
Total Personnel Services – Employee Benefits	\$733,962.27	\$681,083.25	\$6,265.94	\$1,740,619.38
300 Purchased Professional and Technical Services				
310 Official / Administrative Services				136,791.42
329 Professional Educational Services – Other	5,239.86			7,824.86
330 Other Professional Services				91,370.60
Total Purchased Professional and Technical Services	\$5,239.86			\$235,986.88
500 Other Purchased Services				
520 Insurance – General				17,555.00
530 Communications	11,275.45	18,719.73		30,615.55
549 Other Advertising/Public Relations				19,123.24
550 Printing and Binding				633.15
580 Travel	1,400.90	16.97		2,946.27
Total Other Purchased Services	\$12,676.35	\$18,736.70		\$70,873.21
600 Supplies				
610 General Supplies	5,475.48	3,043.60		64,134.42
Total Supplies	\$5,475.48	\$3,043.60		\$64,134.42
800 Other Objects				
810 Dues and Fees	4,760.00	2,975.00		31,921.48
820 Claims and Judgments Against the LEA				162.69
Total Other Objects	\$4,760.00	\$2,975.00		\$32,084.17
Total 2300 Support Services – Administration	\$1,762,917.84	\$1,601,190.34	\$30,513.57	\$4,545,549.68

LEA : 111444602 Mifflin County SD

Printed 12/19/2022 8:58:55 AM

General Fund (10)

2310 Board Services

	<u>Elementary</u>	<u>Secondary</u>	<u>Federal</u>	<u>Total</u>
100 <u>Personnel Services – Salaries</u>				
100 Personnel Services – Salaries				4,899.82
Total Personnel Services – Salaries				\$4,899.82
200 <u>Personnel Services – Employee Benefits</u>				
220 Social Security Contributions				366.86
230 PSERS Retirement Contributions				1,712.19
250 Unemployment Compensation				5.84
260 Workers' Compensation				24.45
Total Personnel Services – Employee Benefits				\$2,109.34
300 <u>Purchased Professional and Technical Services</u>				
330 Other Professional Services				56,186.60
Total Purchased Professional and Technical Services				\$56,186.60
500 <u>Other Purchased Services</u>				
520 Insurance – General				700.00
530 Communications				620.37
549 Other Advertising/Public Relations				19,123.24
580 Travel				315.87
Total Other Purchased Services				\$20,759.48
600 <u>Supplies</u>				
610 General Supplies				2,543.52
Total Supplies				\$2,543.52
800 <u>Other Objects</u>				
810 Dues and Fees				19,859.87
820 Claims and Judgments Against the LEA				162.69
Total Other Objects				\$20,022.56
Total 2310 Board Services				\$106,521.32

LEA : 111444602 Mifflin County SD

Printed 12/19/2022 8:58:55 AM

General Fund (10)

2330 Tax Assessment and Collection Services	<u>Elementary</u>	<u>Secondary</u>	<u>Federal</u>	<u>Total</u>
100 <u>Personnel Services – Salaries</u>				
100 Personnel Services – Salaries				72,181.00
Total Personnel Services – Salaries				\$72,181.00
200 <u>Personnel Services – Employee Benefits</u>				
220 Social Security Contributions				5,521.88
260 Workers’ Compensation				361.08
Total Personnel Services – Employee Benefits				\$5,882.96
300 <u>Purchased Professional and Technical Services</u>				
310 Official / Administrative Services				136,791.42
Total Purchased Professional and Technical Services				\$136,791.42
500 <u>Other Purchased Services</u>				
520 Insurance – General				16,855.00
Total Other Purchased Services				\$16,855.00
600 <u>Supplies</u>				
610 General Supplies				47,235.68
Total Supplies				\$47,235.68
Total 2330 Tax Assessment and Collection Services				\$278,946.06

LEA : 111444602 Mifflin County SD

Printed 12/19/2022 8:58:55 AM

General Fund (10)				
2350 Legal and Accounting Services	<u>Elementary</u>	<u>Secondary</u>	<u>Federal</u>	<u>Total</u>
300 <u>Purchased Professional and Technical Services</u>				
330 Other Professional Services				35,184.00
Total Purchased Professional and Technical Services				\$35,184.00
Total 2350 Legal and Accounting Services				\$35,184.00

LEA : 111444602 Mifflin County SD

Printed 12/19/2022 8:58:55 AM

General Fund (10)

2360 Office of the Superintendent / Executive Director Services	<u>Elementary</u>	<u>Secondary</u>	<u>Federal</u>	<u>Total</u>
100 <u>Personnel Services – Salaries</u>				
100 Personnel Services – Salaries				404,367.50
Total Personnel Services – Salaries				\$404,367.50
200 <u>Personnel Services – Employee Benefits</u>				
210 Group Insurance – Contracted Provider				129,762.65
220 Social Security Contributions				30,550.82
230 PSERS Retirement Contributions				140,379.35
250 Unemployment Compensation				475.71
260 Workers' Compensation				2,022.09
291 Other Retirement Plans				8,125.00
Total Personnel Services – Employee Benefits				\$311,315.62
300 <u>Purchased Professional and Technical Services</u>				
329 Professional Educational Services – Other				2,585.00
Total Purchased Professional and Technical Services				\$2,585.00
500 <u>Other Purchased Services</u>				
530 Communications	838.75	2,365.73		3,204.48
550 Printing and Binding				633.15
580 Travel				1,212.53
Total Other Purchased Services	\$838.75	\$2,365.73		\$5,050.16
600 <u>Supplies</u>				
610 General Supplies				5,836.14
Total Supplies				\$5,836.14
800 <u>Other Objects</u>				
810 Dues and Fees				4,326.61
Total Other Objects				\$4,326.61
Total 2360 Office of the Superintendent / Executive Director Services	\$838.75	\$2,365.73		\$733,481.03

LEA : 111444602 Mifflin County SD

Printed 12/19/2022 8:58:55 AM

General Fund (10)

2380 Office of the Principal Services	Elementary	Secondary	Federal	Total
100 <u>Personnel Services – Salaries</u>				
100 Personnel Services – Salaries	1,000,803.88	895,351.79	24,247.63	1,920,403.30
Total Personnel Services – Salaries	\$1,000,803.88	\$895,351.79	\$24,247.63	\$1,920,403.30
200 <u>Personnel Services – Employee Benefits</u>				
210 Group Insurance – Contracted Provider	297,703.69	242,448.25		540,151.94
220 Social Security Contributions	75,503.96	67,979.57	1,854.76	145,338.29
230 PSERS Retirement Contributions	348,698.07	312,741.45	4,241.51	665,681.03
250 Unemployment Compensation	1,178.18	1,053.66	48.43	2,280.27
260 Workers' Compensation	5,003.37	4,476.88	121.24	9,601.49
291 Other Retirement Plans	5,875.00	52,383.44		58,258.44
Total Personnel Services – Employee Benefits	\$733,962.27	\$681,083.25	\$6,265.94	\$1,421,311.46
300 <u>Purchased Professional and Technical Services</u>				
329 Professional Educational Services – Other	5,239.86			5,239.86
Total Purchased Professional and Technical Services	\$5,239.86			\$5,239.86
500 <u>Other Purchased Services</u>				
530 Communications	10,436.70	16,354.00		26,790.70
580 Travel	1,400.90	16.97		1,417.87
Total Other Purchased Services	\$11,837.60	\$16,370.97		\$28,208.57
600 <u>Supplies</u>				
610 General Supplies	5,475.48	3,043.60		8,519.08
Total Supplies	\$5,475.48	\$3,043.60		\$8,519.08
800 <u>Other Objects</u>				
810 Dues and Fees	4,760.00	2,975.00		7,735.00
Total Other Objects	\$4,760.00	\$2,975.00		\$7,735.00
Total 2380 Office of the Principal Services	\$1,762,079.09	\$1,598,824.61	\$30,513.57	\$3,391,417.27

LEA : 111444602 Mifflin County SD

Printed 12/19/2022 8:58:55 AM

General Fund (10)

2400 Support Services – Pupil Health	<u>Elementary</u>	<u>Secondary</u>	<u>Federal</u>	<u>Total</u>
100 <u>Personnel Services – Salaries</u>				
100 Personnel Services – Salaries			40,032.39	456,038.25
Total Personnel Services – Salaries			\$40,032.39	\$456,038.25
200 <u>Personnel Services – Employee Benefits</u>				
210 Group Insurance – Contracted Provider			28,070.52	148,431.85
220 Social Security Contributions			2,957.99	34,300.61
230 PSERS Retirement Contributions			6,992.75	147,477.94
250 Unemployment Compensation			80.19	569.86
260 Workers' Compensation			200.14	2,280.11
Total Personnel Services – Employee Benefits			\$38,301.59	\$333,060.37
300 <u>Purchased Professional and Technical Services</u>				
329 Professional Educational Services – Other				11,298.39
330 Other Professional Services				4,479.82
390 Other Purchased Professional and Technical Services				640.00
Total Purchased Professional and Technical Services				\$16,418.21
500 <u>Other Purchased Services</u>				
580 Travel			106.12	503.27
Total Other Purchased Services			\$106.12	\$503.27
600 <u>Supplies</u>				
610 General Supplies			25,145.20	33,701.77
Total Supplies			\$25,145.20	\$33,701.77
700 <u>Property</u>				
752 Capital Equipment – Original and Additional			31,816.00	31,816.00
Total Property			\$31,816.00	\$31,816.00
800 <u>Other Objects</u>				
810 Dues and Fees				520.00
Total Other Objects				\$520.00
Total 2400 Support Services – Pupil Health			\$135,401.30	\$872,057.87

LEA : 111444602 Mifflin County SD

Printed 12/19/2022 8:58:55 AM

General Fund (10)				
2440 Nursing Services				
	<u>Elementary</u>	<u>Secondary</u>	<u>Federal</u>	<u>Total</u>
100 <u>Personnel Services – Salaries</u>				
100 Personnel Services – Salaries			40,032.39	456,038.25
Total Personnel Services – Salaries			\$40,032.39	\$456,038.25
200 <u>Personnel Services – Employee Benefits</u>				
210 Group Insurance – Contracted Provider			28,070.52	148,431.85
220 Social Security Contributions			2,957.99	34,300.61
230 PSERS Retirement Contributions			6,992.75	147,477.94
250 Unemployment Compensation			80.19	569.86
260 Workers' Compensation			200.14	2,280.11
Total Personnel Services – Employee Benefits			\$38,301.59	\$333,060.37
300 <u>Purchased Professional and Technical Services</u>				
329 Professional Educational Services – Other				11,298.39
330 Other Professional Services				4,479.82
390 Other Purchased Professional and Technical Services				640.00
Total Purchased Professional and Technical Services				\$16,418.21
500 <u>Other Purchased Services</u>				
580 Travel			106.12	503.27
Total Other Purchased Services			\$106.12	\$503.27
600 <u>Supplies</u>				
610 General Supplies			25,145.20	33,701.77
Total Supplies			\$25,145.20	\$33,701.77
700 <u>Property</u>				
752 Capital Equipment – Original and Additional			31,816.00	31,816.00
Total Property			\$31,816.00	\$31,816.00
800 <u>Other Objects</u>				
810 Dues and Fees				520.00
Total Other Objects				\$520.00
Total 2440 Nursing Services			\$135,401.30	\$872,057.87

LEA : 111444602 Mifflin County SD

Printed 12/19/2022 8:58:55 AM

General Fund (10)

2500 Support Services – Business

Elementary Secondary Federal Total

100 Personnel Services – Salaries

100 Personnel Services – Salaries 445,141.39

Total Personnel Services – Salaries \$445,141.39

200 Personnel Services – Employee Benefits

210 Group Insurance – Contracted Provider 104,539.03

220 Social Security Contributions 33,469.93

230 PSERS Retirement Contributions 153,690.43

250 Unemployment Compensation 523.92

260 Workers' Compensation 2,225.55

291 Other Retirement Plans 225.00

Total Personnel Services – Employee Benefits \$294,673.86

300 Purchased Professional and Technical Services

310 Official / Administrative Services 86,093.60

330 Other Professional Services 3,270.26

Total Purchased Professional and Technical Services \$89,363.86

500 Other Purchased Services

530 Communications 13,213.78

580 Travel 44.40

Total Other Purchased Services \$13,258.18

600 Supplies

610 General Supplies 13,206.85

650 Supplies & Fees – Technology Related 18,798.00

Total Supplies \$32,004.85

800 Other Objects

810 Dues and Fees 5,552.42

Total Other Objects \$5,552.42

Total 2500 Support Services – Business \$879,994.56

LEA : 111444602 Mifflin County SD

Printed 12/19/2022 8:58:55 AM

General Fund (10)				
2510 Fiscal Services	<u>Elementary</u>	<u>Secondary</u>	<u>Federal</u>	<u>Total</u>
100 <u>Personnel Services – Salaries</u>				
100 Personnel Services – Salaries				445,141.39
Total Personnel Services – Salaries				\$445,141.39
200 <u>Personnel Services – Employee Benefits</u>				
210 Group Insurance – Contracted Provider				104,539.03
220 Social Security Contributions				33,469.93
230 PSERS Retirement Contributions				153,690.43
250 Unemployment Compensation				523.92
260 Workers' Compensation				2,225.55
291 Other Retirement Plans				225.00
Total Personnel Services – Employee Benefits				\$294,673.86
300 <u>Purchased Professional and Technical Services</u>				
310 Official / Administrative Services				86,093.60
330 Other Professional Services				3,270.26
Total Purchased Professional and Technical Services				\$89,363.86
500 <u>Other Purchased Services</u>				
530 Communications				13,213.78
580 Travel				44.40
Total Other Purchased Services				\$13,258.18
600 <u>Supplies</u>				
610 General Supplies				13,206.85
650 Supplies & Fees – Technology Related				18,798.00
Total Supplies				\$32,004.85
800 <u>Other Objects</u>				
810 Dues and Fees				5,552.42
Total Other Objects				\$5,552.42
Total 2510 Fiscal Services				\$879,994.56

LEA : 111444602 Mifflin County SD

Printed 12/19/2022 8:58:55 AM

General Fund (10)

2511 Supervision of Fiscal Services - Head of Component	<u>Elementary</u>	<u>Secondary</u>	<u>Federal</u>	<u>Total</u>
100 <u>Personnel Services – Salaries</u>				
100 Personnel Services – Salaries				157,917.40
Total Personnel Services – Salaries				\$157,917.40
200 <u>Personnel Services – Employee Benefits</u>				
210 Group Insurance – Contracted Provider				29,115.63
220 Social Security Contributions				12,047.91
230 PSERS Retirement Contributions				53,997.76
250 Unemployment Compensation				185.85
260 Workers' Compensation				789.67
Total Personnel Services – Employee Benefits				\$96,136.82
300 <u>Purchased Professional and Technical Services</u>				
330 Other Professional Services				3,270.26
Total Purchased Professional and Technical Services				\$3,270.26
600 <u>Supplies</u>				
650 Supplies & Fees – Technology Related				18,798.00
Total Supplies				\$18,798.00
800 <u>Other Objects</u>				
810 Dues and Fees				499.29
Total Other Objects				\$499.29
Total 2511 Supervision of Fiscal Services - Head of Component				\$276,621.77

LEA : 111444602 Mifflin County SD

Printed 12/19/2022 8:58:55 AM

General Fund (10)

2514 Payroll Services

	<u>Elementary</u>	<u>Secondary</u>	<u>Federal</u>	<u>Total</u>
100 <u>Personnel Services – Salaries</u>				
100 Personnel Services – Salaries				104,570.09
Total Personnel Services – Salaries				\$104,570.09
200 <u>Personnel Services – Employee Benefits</u>				
210 Group Insurance – Contracted Provider				28,343.72
220 Social Security Contributions				7,774.56
230 PSERS Retirement Contributions				36,536.60
250 Unemployment Compensation				123.07
260 Workers' Compensation				522.77
Total Personnel Services – Employee Benefits				\$73,300.72
Total 2514 Payroll Services				\$177,870.81

LEA : 111444602 Mifflin County SD

Printed 12/19/2022 8:58:55 AM

General Fund (10)

2515 Financial Accounting Services	<u>Elementary</u>	<u>Secondary</u>	<u>Federal</u>	<u>Total</u>
100 <u>Personnel Services – Salaries</u>				
100 Personnel Services – Salaries				56,692.34
Total Personnel Services – Salaries				\$56,692.34
200 <u>Personnel Services – Employee Benefits</u>				
210 Group Insurance – Contracted Provider				30,056.89
220 Social Security Contributions				4,036.27
230 PSERS Retirement Contributions				19,930.78
250 Unemployment Compensation				66.81
260 Workers' Compensation				283.42
Total Personnel Services – Employee Benefits				\$54,374.17
300 <u>Purchased Professional and Technical Services</u>				
310 Official / Administrative Services				86,043.60
Total Purchased Professional and Technical Services				\$86,043.60
500 <u>Other Purchased Services</u>				
530 Communications				12,048.36
580 Travel				18.14
Total Other Purchased Services				\$12,066.50
600 <u>Supplies</u>				
610 General Supplies				12,581.86
Total Supplies				\$12,581.86
800 <u>Other Objects</u>				
810 Dues and Fees				439.13
Total Other Objects				\$439.13
Total 2515 Financial Accounting Services				\$222,197.60

LEA : 111444602 Mifflin County SD

Printed 12/19/2022 8:58:55 AM

General Fund (10)

2519 Other Fiscal Services

	<u>Elementary</u>	<u>Secondary</u>	<u>Federal</u>	<u>Total</u>
100 <u>Personnel Services – Salaries</u>				
100 Personnel Services – Salaries				125,961.56
Total Personnel Services – Salaries				\$125,961.56
200 <u>Personnel Services – Employee Benefits</u>				
210 Group Insurance – Contracted Provider				17,022.79
220 Social Security Contributions				9,611.19
230 PSERS Retirement Contributions				43,225.29
250 Unemployment Compensation				148.19
260 Workers' Compensation				629.69
291 Other Retirement Plans				225.00
Total Personnel Services – Employee Benefits				\$70,862.15
300 <u>Purchased Professional and Technical Services</u>				
310 Official / Administrative Services				50.00
Total Purchased Professional and Technical Services				\$50.00
500 <u>Other Purchased Services</u>				
530 Communications				1,165.42
580 Travel				26.26
Total Other Purchased Services				\$1,191.68
600 <u>Supplies</u>				
610 General Supplies				624.99
Total Supplies				\$624.99
800 <u>Other Objects</u>				
810 Dues and Fees				4,614.00
Total Other Objects				\$4,614.00
Total 2519 Other Fiscal Services				\$203,304.38

LEA : 111444602 Mifflin County SD

Printed 12/19/2022 8:58:55 AM

General Fund (10)

2600 Operation and Maintenance of Plant Services

	<u>Elementary</u>	<u>Secondary</u>	<u>Federal</u>	<u>Total</u>
100 <u>Personnel Services – Salaries</u>				
100 Personnel Services – Salaries			169,984.50	2,122,729.29
Total Personnel Services – Salaries			\$169,984.50	\$2,122,729.29
200 <u>Personnel Services – Employee Benefits</u>				
210 Group Insurance – Contracted Provider			62,948.23	896,041.97
220 Social Security Contributions			12,791.11	159,287.63
230 PSERS Retirement Contributions			29,753.44	709,647.73
250 Unemployment Compensation			340.10	2,638.12
260 Workers' Compensation			849.82	10,614.71
291 Other Retirement Plans				16,999.00
Total Personnel Services – Employee Benefits			\$106,682.70	\$1,795,229.16
300 <u>Purchased Professional and Technical Services</u>				
330 Other Professional Services				20,864.02
350 Security / Safety Services				131,618.92
Total Purchased Professional and Technical Services				\$152,482.94
400 <u>Purchased Property Services</u>				
410 Cleaning Services				35,099.09
420 Utility Services				96,287.72
430 Repairs and Maintenance Services				696,532.28
440 Rentals				2,495.67
450 Construction Services			1,142,722.89	1,142,722.89
Total Purchased Property Services			\$1,142,722.89	\$1,973,137.65
500 <u>Other Purchased Services</u>				
523 General Property and Liability Insurance				228,126.00
529 Other Insurance				36,301.00
530 Communications				6,167.80
580 Travel				120.16
Total Other Purchased Services				\$270,714.96
600 <u>Supplies</u>				
610 General Supplies	127,844.27	102,870.33	91,814.92	322,529.52
620 Energy				835,150.49
650 Supplies & Fees – Technology Related				4,712.50
Total Supplies	\$127,844.27	\$102,870.33	\$91,814.92	\$1,162,392.51
700 <u>Property</u>				
752 Capital Equipment – Original and Additional				40,696.26
762 Capitalized Equipment - Replacement				34,310.88
Total Property				\$75,007.14
800 <u>Other Objects</u>				
810 Dues and Fees				114.29
Total Other Objects				\$114.29
Total 2600 Operation and Maintenance of Plant Services	\$127,844.27	\$102,870.33	\$1,511,205.01	\$7,551,807.94

LEA : 111444602 Mifflin County SD

Printed 12/19/2022 8:58:55 AM

General Fund (10)

2610 Supervision of Operation and Maintenance of Plant Services	<u>Elementary</u>	<u>Secondary</u>	<u>Federal</u>	<u>Total</u>
100 <u>Personnel Services – Salaries</u>				
100 Personnel Services – Salaries			31,992.72	159,918.03
Total Personnel Services – Salaries			\$31,992.72	\$159,918.03
200 <u>Personnel Services – Employee Benefits</u>				
210 Group Insurance – Contracted Provider			463.31	38,347.12
220 Social Security Contributions			2,449.36	12,170.72
230 PSERS Retirement Contributions			5,646.30	50,343.35
250 Unemployment Compensation			64.04	214.58
260 Workers' Compensation			159.93	799.60
Total Personnel Services – Employee Benefits			\$8,782.94	\$101,875.37
500 <u>Other Purchased Services</u>				
580 Travel				120.16
Total Other Purchased Services				\$120.16
Total 2610 Supervision of Operation and Maintenance of Plant Services			\$40,775.66	\$261,913.56

LEA : 111444602 Mifflin County SD

Printed 12/19/2022 8:58:55 AM

General Fund (10)

2611 Supervision of Operation and Maintenance of Plant Services – Head of Component

	<u>Elementary</u>	<u>Secondary</u>	<u>Federal</u>	<u>Total</u>
100 <u>Personnel Services – Salaries</u>				
100 Personnel Services – Salaries			31,992.72	159,918.03
Total Personnel Services – Salaries			\$31,992.72	\$159,918.03
200 <u>Personnel Services – Employee Benefits</u>				
210 Group Insurance – Contracted Provider			463.31	38,347.12
220 Social Security Contributions			2,449.36	12,170.72
230 PSERS Retirement Contributions			5,646.30	50,343.35
250 Unemployment Compensation			64.04	214.58
260 Workers' Compensation			159.93	799.60
Total Personnel Services – Employee Benefits			\$8,782.94	\$101,875.37
500 <u>Other Purchased Services</u>				
580 Travel				120.16
Total Other Purchased Services				\$120.16
Total 2611 Supervision of Operation and Maintenance of Plant Services – Head of Component			\$40,775.66	\$261,913.56

LEA : 111444602 Mifflin County SD

Printed 12/19/2022 8:58:55 AM

General Fund (10)

2620 Operation of Buildings Services

	<u>Elementary</u>	<u>Secondary</u>	<u>Federal</u>	<u>Total</u>
100 <u>Personnel Services – Salaries</u>				
100 Personnel Services – Salaries			137,991.78	1,952,896.26
Total Personnel Services – Salaries			\$137,991.78	\$1,952,896.26
200 <u>Personnel Services – Employee Benefits</u>				
210 Group Insurance – Contracted Provider			62,484.92	857,694.85
220 Social Security Contributions			10,341.75	146,367.44
230 PSERS Retirement Contributions			24,107.14	656,317.04
250 Unemployment Compensation			276.06	2,411.77
260 Workers' Compensation			689.89	9,765.39
291 Other Retirement Plans				16,999.00
Total Personnel Services – Employee Benefits			\$97,899.76	\$1,689,555.49
300 <u>Purchased Professional and Technical Services</u>				
330 Other Professional Services				20,864.02
Total Purchased Professional and Technical Services				\$20,864.02
400 <u>Purchased Property Services</u>				
410 Cleaning Services				35,099.09
420 Utility Services				96,287.72
430 Repairs and Maintenance Services				696,532.28
440 Rentals				2,495.67
450 Construction Services			1,142,722.89	1,142,722.89
Total Purchased Property Services			\$1,142,722.89	\$1,973,137.65
500 <u>Other Purchased Services</u>				
523 General Property and Liability Insurance				228,126.00
529 Other Insurance				36,301.00
530 Communications				6,167.80
Total Other Purchased Services				\$270,594.80
600 <u>Supplies</u>				
610 General Supplies	119,942.17	101,787.43	91,814.92	313,544.52
620 Energy				835,150.49
Total Supplies	\$119,942.17	\$101,787.43	\$91,814.92	\$1,148,695.01
700 <u>Property</u>				
752 Capital Equipment – Original and Additional				34,879.00
762 Capitalized Equipment - Replacement				34,310.88
Total Property				\$69,189.88
800 <u>Other Objects</u>				
810 Dues and Fees				114.29
Total Other Objects				\$114.29
Total 2620 Operation of Buildings Services	\$119,942.17	\$101,787.43	\$1,470,429.35	\$7,125,047.40

LEA : 111444602 Mifflin County SD

Printed 12/19/2022 8:58:55 AM

General Fund (10)

2660 Safety and Security Services	Elementary	Secondary	Federal	Total
100 <u>Personnel Services – Salaries</u>				
100 Personnel Services – Salaries				9,915.00
Total Personnel Services – Salaries				\$9,915.00
200 <u>Personnel Services – Employee Benefits</u>				
220 Social Security Contributions				749.47
230 PSERS Retirement Contributions				2,987.34
250 Unemployment Compensation				11.77
260 Workers' Compensation				49.72
Total Personnel Services – Employee Benefits				\$3,798.30
300 <u>Purchased Professional and Technical Services</u>				
350 Security / Safety Services				131,618.92
Total Purchased Professional and Technical Services				\$131,618.92
600 <u>Supplies</u>				
610 General Supplies	7,902.10	1,082.90		8,985.00
650 Supplies & Fees – Technology Related				4,712.50
Total Supplies	\$7,902.10	\$1,082.90		\$13,697.50
700 <u>Property</u>				
752 Capital Equipment – Original and Additional				5,817.26
Total Property				\$5,817.26
Total 2660 Safety and Security Services	\$7,902.10	\$1,082.90		\$164,846.98

LEA : 111444602 Mifflin County SD

Printed 12/19/2022 8:58:55 AM

General Fund (10)

2700 Student Transportation Services	Elementary	Secondary	Federal	Total
100 Personnel Services – Salaries				
100 Personnel Services – Salaries				56,818.00
Total Personnel Services – Salaries				\$56,818.00
200 Personnel Services – Employee Benefits				
210 Group Insurance – Contracted Provider				23,118.15
220 Social Security Contributions				4,252.94
230 PSERS Retirement Contributions				19,852.28
250 Unemployment Compensation				66.85
260 Workers' Compensation				284.18
Total Personnel Services – Employee Benefits				\$47,574.40
300 Purchased Professional and Technical Services				
390 Other Purchased Professional and Technical Services				1,031.25
Total Purchased Professional and Technical Services				\$1,031.25
500 Other Purchased Services				
513 Contracted Carriers			28,306.22	4,588,486.86
516 Student Transportation Services From the IU				98,308.83
519 Student Transportation Services From Other Sources			38,854.70	38,854.70
530 Communications				877.12
580 Travel				203.30
Total Other Purchased Services			\$67,160.92	\$4,726,730.81
600 Supplies				
610 General Supplies				861.21
650 Supplies & Fees – Technology Related				15,700.00
Total Supplies				\$16,561.21
800 Other Objects				
810 Dues and Fees				114.29
Total Other Objects				\$114.29
Total 2700 Student Transportatation Services			\$67,160.92	\$4,848,829.96

LEA : 111444602 Mifflin County SD

Printed 12/19/2022 8:58:55 AM

General Fund (10)				
2720 Vehicle Operation Services				
	<u>Elementary</u>	<u>Secondary</u>	<u>Federal</u>	<u>Total</u>
100 <u>Personnel Services – Salaries</u>				
100 Personnel Services – Salaries				56,818.00
Total Personnel Services – Salaries				\$56,818.00
200 <u>Personnel Services – Employee Benefits</u>				
210 Group Insurance – Contracted Provider				23,118.15
220 Social Security Contributions				4,252.94
230 PSERS Retirement Contributions				19,852.28
250 Unemployment Compensation				66.85
260 Workers' Compensation				284.18
Total Personnel Services – Employee Benefits				\$47,574.40
300 <u>Purchased Professional and Technical Services</u>				
390 Other Purchased Professional and Technical Services				1,031.25
Total Purchased Professional and Technical Services				\$1,031.25
500 <u>Other Purchased Services</u>				
513 Contracted Carriers			28,306.22	3,963,754.57
516 Student Transportation Services From the IU				98,308.83
519 Student Transportation Services From Other Sources			38,854.70	38,854.70
530 Communications				877.12
580 Travel				203.30
Total Other Purchased Services			\$67,160.92	\$4,101,998.52
600 <u>Supplies</u>				
610 General Supplies				861.21
650 Supplies & Fees – Technology Related				15,700.00
Total Supplies				\$16,561.21
800 <u>Other Objects</u>				
810 Dues and Fees				114.29
Total Other Objects				\$114.29
Total 2720 Vehicle Operation Services			\$67,160.92	\$4,224,097.67

LEA : 111444602 Mifflin County SD

Printed 12/19/2022 8:58:55 AM

General Fund (10)

2750 Nonpublic Transportation	<u>Elementary</u>	<u>Secondary</u>	<u>Federal</u>	<u>Total</u>
500 <u>Other Purchased Services</u>				
513 Contracted Carriers				624,732.29
Total Other Purchased Services				\$624,732.29
Total 2750 Nonpublic Transportation				\$624,732.29

LEA : 111444602 Mifflin County SD

Printed 12/19/2022 8:58:55 AM

General Fund (10)

2800 Support Services – Central

	<u>Elementary</u>	<u>Secondary</u>	<u>Federal</u>	<u>Total</u>
100 <u>Personnel Services – Salaries</u>				
100 Personnel Services – Salaries			94,939.68	664,056.74
Total Personnel Services – Salaries			\$94,939.68	\$664,056.74
200 <u>Personnel Services – Employee Benefits</u>				
210 Group Insurance – Contracted Provider			21,272.89	203,400.96
220 Social Security Contributions			7,045.32	50,132.26
230 PSERS Retirement Contributions			16,588.58	215,454.46
240 Tuition Reimbursement				15,007.00
250 Unemployment Compensation			190.21	860.14
260 Workers' Compensation			474.49	3,319.63
291 Other Retirement Plans				26,362.47
Total Personnel Services – Employee Benefits			\$45,571.49	\$514,536.92
300 <u>Purchased Professional and Technical Services</u>				
329 Professional Educational Services – Other			333.77	333.77
340 Technical Services				100,675.36
360 Employee Training and Development Services				1,427.00
Total Purchased Professional and Technical Services			\$333.77	\$102,436.13
400 <u>Purchased Property Services</u>				
430 Repairs and Maintenance Services				4,256.51
Total Purchased Property Services				\$4,256.51
500 <u>Other Purchased Services</u>				
530 Communications			38.71	7,635.02
580 Travel			280.60	5,466.23
Total Other Purchased Services			\$319.31	\$13,101.25
600 <u>Supplies</u>				
610 General Supplies			1,637.28	13,817.94
650 Supplies & Fees – Technology Related			2,381,489.38	2,477,339.69
Total Supplies			\$2,383,126.66	\$2,491,157.63
700 <u>Property</u>				
752 Capital Equipment – Original and Additional				10,308.00
766 Capitalized Technology Equipment – Replacement			836,145.55	836,145.55
768 Capitalized Technology Software - Replacement				8,897.36
Total Property			\$836,145.55	\$855,350.91
800 <u>Other Objects</u>				
810 Dues and Fees			50.00	1,422.58
Total Other Objects			\$50.00	\$1,422.58
Total 2800 Support Services – Central			\$3,360,486.46	\$4,646,318.67

LEA : 111444602 Mifflin County SD

Printed 12/19/2022 8:58:55 AM

General Fund (10)

2810 Planning, Research, Development and Evaluation Services

	<u>Elementary</u>	<u>Secondary</u>	<u>Federal</u>	<u>Total</u>
100 <u>Personnel Services – Salaries</u>				
100 Personnel Services – Salaries			14,042.50	583,159.56
Total Personnel Services – Salaries			\$14,042.50	\$583,159.56
200 <u>Personnel Services – Employee Benefits</u>				
210 Group Insurance – Contracted Provider				182,128.07
220 Social Security Contributions			1,074.26	44,161.20
230 PSERS Retirement Contributions			2,455.94	201,321.82
250 Unemployment Compensation			28.09	698.02
260 Workers' Compensation			70.23	2,915.37
291 Other Retirement Plans				26,362.47
Total Personnel Services – Employee Benefits			\$3,628.52	\$457,586.95
300 <u>Purchased Professional and Technical Services</u>				
329 Professional Educational Services – Other			333.77	333.77
340 Technical Services				100,675.36
Total Purchased Professional and Technical Services			\$333.77	\$101,009.13
400 <u>Purchased Property Services</u>				
430 Repairs and Maintenance Services				4,256.51
Total Purchased Property Services				\$4,256.51
500 <u>Other Purchased Services</u>				
530 Communications				7,596.31
580 Travel				5,185.63
Total Other Purchased Services				\$12,781.94
600 <u>Supplies</u>				
610 General Supplies			1,517.30	13,697.96
650 Supplies & Fees – Technology Related			2,381,489.38	2,477,339.69
Total Supplies			\$2,383,006.68	\$2,491,037.65
700 <u>Property</u>				
752 Capital Equipment – Original and Additional				10,308.00
766 Capitalized Technology Equipment – Replacement			836,145.55	836,145.55
768 Capitalized Technology Software - Replacement				8,897.36
Total Property			\$836,145.55	\$855,350.91
800 <u>Other Objects</u>				
810 Dues and Fees				1,372.58
Total Other Objects				\$1,372.58
Total 2810 Planning, Research, Development and Evaluation Services			\$3,237,157.02	\$4,506,555.23

LEA : 111444602 Mifflin County SD

Printed 12/19/2022 8:58:55 AM

General Fund (10)				
2830 Staff Services	<u>Elementary</u>	<u>Secondary</u>	<u>Federal</u>	<u>Total</u>
200 <u>Personnel Services – Employee Benefits</u>				
240 Tuition Reimbursement				15,007.00
Total Personnel Services – Employee Benefits				\$15,007.00
300 <u>Purchased Professional and Technical Services</u>				
360 Employee Training and Development Services				1,427.00
Total Purchased Professional and Technical Services				\$1,427.00
Total 2830 Staff Services				\$16,434.00

LEA : 111444602 Mifflin County SD

Printed 12/19/2022 8:58:55 AM

General Fund (10)

2834 Staff Development Services – Non-Instructional, Certified Staff Only	<u>Elementary</u>	<u>Secondary</u>	<u>Federal</u>	<u>Total</u>
200 <u>Personnel Services – Employee Benefits</u>				
240 Tuition Reimbursement				15,007.00
Total Personnel Services – Employee Benefits				\$15,007.00
300 <u>Purchased Professional and Technical Services</u>				
360 Employee Training and Development Services				498.00
Total Purchased Professional and Technical Services				\$498.00
Total 2834 Staff Development Services – Non-Instructional, Certified Staff Only				\$15,505.00

LEA : 111444602 Mifflin County SD

Printed 12/19/2022 8:58:55 AM

General Fund (10)

2836 Staff Development Services – Non-Instructional, Non-Certified Staff Only	<u>Elementary</u>	<u>Secondary</u>	<u>Federal</u>	<u>Total</u>
300 <u>Purchased Professional and Technical Services</u>				
360 Employee Training and Development Services				929.00
Total Purchased Professional and Technical Services				\$929.00
Total 2836 Staff Development Services – Non-Instructional, Non-Certified Staff Only				\$929.00

LEA : 111444602 Mifflin County SD

Printed 12/19/2022 8:58:55 AM

General Fund (10)

2850 State and Federal Agency Liaison Services

	<u>Elementary</u>	<u>Secondary</u>	<u>Federal</u>	<u>Total</u>
100 <u>Personnel Services – Salaries</u>				
100 Personnel Services – Salaries			80,897.18	80,897.18
Total Personnel Services – Salaries			\$80,897.18	\$80,897.18
200 <u>Personnel Services – Employee Benefits</u>				
210 Group Insurance – Contracted Provider			21,272.89	21,272.89
220 Social Security Contributions			5,971.06	5,971.06
230 PSERS Retirement Contributions			14,132.64	14,132.64
250 Unemployment Compensation			162.12	162.12
260 Workers' Compensation			404.26	404.26
Total Personnel Services – Employee Benefits			\$41,942.97	\$41,942.97
500 <u>Other Purchased Services</u>				
530 Communications			38.71	38.71
580 Travel			280.60	280.60
Total Other Purchased Services			\$319.31	\$319.31
600 <u>Supplies</u>				
610 General Supplies			119.98	119.98
Total Supplies			\$119.98	\$119.98
800 <u>Other Objects</u>				
810 Dues and Fees			50.00	50.00
Total Other Objects			\$50.00	\$50.00
Total 2850 State and Federal Agency Liaison Services			\$123,329.44	\$123,329.44

LEA : 111444602 Mifflin County SD

Printed 12/19/2022 8:59:02 AM

General Fund (10)

3000 Operation of Non-Instructional Services		<u>Total</u>
100 Personnel Services – Salaries		
100 Personnel Services – Salaries		461,190.33
Total Personnel Services – Salaries		\$461,190.33
200 Personnel Services – Employee Benefits		
210 Group Insurance – Contracted Provider		28,236.62
220 Social Security Contributions		34,704.29
230 PSERS Retirement Contributions		156,445.25
250 Unemployment Compensation		780.37
260 Workers' Compensation		2,305.51
Total Personnel Services – Employee Benefits		\$222,472.04
300 Purchased Professional and Technical Services		
390 Other Purchased Professional and Technical Services		140,151.65
Total Purchased Professional and Technical Services		\$140,151.65
500 Other Purchased Services		
510 Student Transportation Services		153,807.02
530 Communications		2,537.82
580 Travel		7,624.67
591 Services Purchased Locally		43,026.43
Total Other Purchased Services		\$206,995.94
600 Supplies		
610 General Supplies		103,402.63
Total Supplies		\$103,402.63
800 Other Objects		
810 Dues and Fees		27,032.25
860 Grants To Municipal and Community Service Organizations		1,362.71
Total Other Objects		\$28,394.96
Total 3000 Operation of Non-Instructional Services		\$1,162,607.55

LEA : 111444602 Mifflin County SD

Printed 12/19/2022 8:59:02 AM

General Fund (10)

3200 Student Activities

	<u>Elementary</u>	<u>Secondary</u>	<u>Federal</u>	<u>Total</u>
100 <u>Personnel Services – Salaries</u>				
100 Personnel Services – Salaries			5,024.40	456,021.83
Total Personnel Services – Salaries			\$5,024.40	\$456,021.83
200 <u>Personnel Services – Employee Benefits</u>				
210 Group Insurance – Contracted Provider				28,236.62
220 Social Security Contributions			374.33	34,316.67
230 PSERS Retirement Contributions			881.64	155,542.33
250 Unemployment Compensation			10.05	770.06
260 Workers' Compensation			25.12	2,279.65
Total Personnel Services – Employee Benefits			\$1,291.14	\$221,145.33
300 <u>Purchased Professional and Technical Services</u>				
390 Other Purchased Professional and Technical Services				140,151.65
Total Purchased Professional and Technical Services				\$140,151.65
500 <u>Other Purchased Services</u>				
510 Student Transportation Services				153,807.02
530 Communications				2,537.82
580 Travel				7,624.67
591 Services Purchased Locally			8,946.90	43,026.43
Total Other Purchased Services			\$8,946.90	\$206,995.94
600 <u>Supplies</u>				
610 General Supplies				91,042.98
Total Supplies				\$91,042.98
800 <u>Other Objects</u>				
810 Dues and Fees				27,032.25
Total Other Objects				\$27,032.25
Total 3200 Student Activities			\$15,262.44	\$1,142,389.98

LEA : 111444602 Mifflin County SD

Printed 12/19/2022 8:59:02 AM

General Fund (10)

3300 Community Services

100 Personnel Services – Salaries

	<u>Elementary</u>	<u>Secondary</u>	<u>Federal</u>	<u>Total</u>
100 Personnel Services – Salaries			5,168.50	5,168.50
Total Personnel Services – Salaries			\$5,168.50	\$5,168.50

200 Personnel Services – Employee Benefits

220 Social Security Contributions			387.62	387.62
230 PSERS Retirement Contributions			902.92	902.92
250 Unemployment Compensation			10.31	10.31
260 Workers' Compensation			25.86	25.86
Total Personnel Services – Employee Benefits			\$1,326.71	\$1,326.71

600 Supplies

610 General Supplies			12,359.65	12,359.65
Total Supplies			\$12,359.65	\$12,359.65

800 Other Objects

860 Grants To Municipal and Community Service Organizations				1,362.71
Total Other Objects				\$1,362.71
Total 3300 Community Services			\$18,854.86	\$20,217.57

LEA : 111444602 Mifflin County SD

Printed 12/19/2022 8:59:07 AM

General Fund (10)

4000 Facilities Acquisition, Construction and Improvement Services

Total

700 Property

710 Land and Improvements

39,525.00

Total Property

\$39,525.00

Total 4000 Facilities Acquisition, Construction and Improvement Services

\$39,525.00

LEA : 111444602 Mifflin County SD

Printed 12/19/2022 8:59:07 AM

General Fund (10)

4200 Existing Site Improvement Services	<u>Elementary</u>	<u>Secondary</u>	<u>Federal</u>	<u>Total</u>
700 <u>Property</u>				
710 Land and Improvements				39,525.00
Total Property				\$39,525.00
Total 4200 Existing Site Improvement Services				\$39,525.00

LEA : 111444602 Mifflin County SD

Printed 12/19/2022 8:59:11 AM

General Fund (10)

5000 Other Expenditures and Financing Uses

Total

800 Other Objects

830 Interest	3,154,718.78
880 Refunds of Prior Years' Receipts	8,622.70

Total Other Objects	\$3,163,341.48
----------------------------	-----------------------

900 Other Uses of Funds

910 Redemption of Principal	4,830,000.00
939 Other Fund Transfers	1,000,000.00

Total Other Uses of Funds	\$5,830,000.00
----------------------------------	-----------------------

Total 5000 Other Expenditures and Financing Uses	\$8,993,341.48
---	-----------------------

LEA : 111444602 Mifflin County SD

Printed 12/19/2022 8:59:11 AM

General Fund (10)

5100 Debt Service / Other Expenditures and Financing Uses	<u>Elementary</u>	<u>Secondary</u>	<u>Federal</u>	<u>Total</u>
800 <u>Other Objects</u>				
830 Interest				3,154,718.78
880 Refunds of Prior Years' Receipts				8,622.70
Total Other Objects				\$3,163,341.48
900 <u>Other Uses of Funds</u>				
910 Redemption of Principal				4,830,000.00
Total Other Uses of Funds				\$4,830,000.00
Total 5100 Debt Service / Other Expenditures and Financing Uses				\$7,993,341.48

LEA : 111444602 Mifflin County SD

Printed 12/19/2022 8:59:11 AM

General Fund (10)

5110 Debt Service	<u>Elementary</u>	<u>Secondary</u>	<u>Federal</u>	<u>Total</u>
800 <u>Other Objects</u>				
830 Interest				3,154,718.78
Total Other Objects				\$3,154,718.78
900 <u>Other Uses of Funds</u>				
910 Redemption of Principal				4,830,000.00
Total Other Uses of Funds				\$4,830,000.00
Total 5110 Debt Service				\$7,984,718.78

LEA : 111444602 Mifflin County SD

Printed 12/19/2022 8:59:11 AM

General Fund (10)

5130 Refund of Prior Year Revenues / Receipts	<u>Elementary</u>	<u>Secondary</u>	<u>Federal</u>	<u>Total</u>
800 <u>Other Objects</u>				
880 Refunds of Prior Years' Receipts				8,622.70
Total Other Objects				\$8,622.70
Total 5130 Refund of Prior Year Revenues / Receipts				\$8,622.70

LEA : 111444602 Mifflin County SD

Printed 12/19/2022 8:59:11 AM

General Fund (10)

5200 Interfund Transfers – Out	<u>Elementary</u>	<u>Secondary</u>	<u>Federal</u>	<u>Total</u>
900 <u>Other Uses of Funds</u>				
939 Other Fund Transfers				1,000,000.00
Total Other Uses of Funds				\$1,000,000.00
Total 5200 Interfund Transfers – Out				\$1,000,000.00

LEA : 111444602 Mifflin County SD

Printed 12/19/2022 8:59:11 AM

General Fund (10)

5230 Capital Projects Fund Transfers	<u>Elementary</u>	<u>Secondary</u>	<u>Federal</u>	<u>Total</u>
900 <u>Other Uses of Funds</u>				
939 Other Fund Transfers				1,000,000.00
Total Other Uses of Funds				\$1,000,000.00
Total 5230 Capital Projects Fund Transfers				\$1,000,000.00

LEA : 111444602 Mifflin County SD

Printed 12/19/2022 8:58:58 AM

Other Capital Projects Fund (39)

2000 Support Services

Total

400 <u>Purchased Property Services</u>	
450 Construction Services	439,499.77
Total Purchased Property Services	\$439,499.77
700 <u>Property</u>	
762 Capitalized Equipment - Replacement	44,802.00
Total Property	\$44,802.00
Total 2000 Support Services	\$484,301.77

LEA : 111444602 Mifflin County SD

Printed 12/19/2022 8:58:58 AM

Other Capital Projects Fund (39)

2600 Operation and Maintenance of Plant Services	<u>Elementary</u>	<u>Secondary</u>	<u>Federal</u>	<u>Total</u>
400 <u>Purchased Property Services</u>				
450 Construction Services				439,499.77
Total Purchased Property Services				\$439,499.77
700 <u>Property</u>				
762 Capitalized Equipment - Replacement				44,802.00
Total Property				\$44,802.00
Total 2600 Operation and Maintenance of Plant Services				\$484,301.77

LEA : 111444602 Mifflin County SD

Printed 12/19/2022 8:58:58 AM

Other Capital Projects Fund (39)

2620 Operation of Buildings Services	<u>Elementary</u>	<u>Secondary</u>	<u>Federal</u>	<u>Total</u>
400 <u>Purchased Property Services</u>				
450 Construction Services				439,499.77
Total Purchased Property Services				\$439,499.77
700 <u>Property</u>				
762 Capitalized Equipment - Replacement				44,802.00
Total Property				\$44,802.00
Total 2620 Operation of Buildings Services				\$484,301.77

LEA : 111444602 Mifflin County SD

Printed 12/19/2022 8:59:13 AM

	<u>General Fund(10)</u>	<u>Student Sponsored Activity Fund(21)</u>	<u>Public Purpose Trust(27)</u>	<u>Other Compt Approved (28)</u>	<u>Athletic / Activity(29)</u>
1000 <u>Instruction</u>					
1100 Regular Programs - Elementary / Secondary	31,543,736.95				
1200 Special Programs - Elementary / Secondary	12,705,775.06				
1300 Vocational Education	3,804,836.21				
1400 Other Instructional Programs - Elementary / Secondary	1,249,901.55				
1500 Nonpublic School Programs	103,887.57				
Total Instruction	\$49,408,137.34				
2000 <u>Support Services</u>					
2100 Support Services - Students	2,511,197.22				
2200 Support Services - Instructional Staff	1,443,275.58				
2300 Support Services - Administration	4,545,549.68				
2400 Support Services - Pupil Health	872,057.87				
2500 Support Services - Business	879,994.56				
2600 Operation and Maintenance of Plant Services	7,551,807.94				
2700 Student Transportation Services	4,848,829.96				
2800 Support Services - Central	4,646,318.67				
Total Support Services	\$27,299,031.48				
3000 <u>Operation of Non-Instructional Services</u>					
3200 Student Activities	1,142,389.98				
3300 Community Services	20,217.57				
Total Operation of Non-Instructional Services	\$1,162,607.55				
4000 <u>Facilities Acquisition, Construction and Improvement Services</u>					
4200 Existing Site Improvement Services	39,525.00				
Total Facilities Acquisition, Construction and Improvement Services	\$39,525.00				
5000 <u>Other Expenditures and Financing Uses</u>					
5100 Debt Service / Other Expenditures and Financing Uses	7,993,341.48				
5200 Interfund Transfers - Out	1,000,000.00				
Total Other Expenditures and Financing Uses	\$8,993,341.48				
TOTAL ACTUAL EXPENDITURES & OTHER FINANCING USES	\$86,902,642.85				

LEA : 111444602 Mifflin County SD

Printed 12/19/2022 8:59:13 AM

	<u>Capital Reserve (690.1850)(31)</u>	<u>Capital Reserve (1431)(32)</u>	<u>Other Capital Projects Fund(39)</u>	<u>Debt Service(40)</u>	<u>Permanent(90)</u>
1000 <u>Instruction</u>					
1100 Regular Programs - Elementary / Secondary					
1200 Special Programs - Elementary / Secondary					
1300 Vocational Education					
1400 Other Instructional Programs - Elementary / Secondary					
1500 Nonpublic School Programs					
Total Instruction					
2000 <u>Support Services</u>					
2100 Support Services - Students					
2200 Support Services - Instructional Staff					
2300 Support Services - Administration					
2400 Support Services - Pupil Health					
2500 Support Services - Business					
2600 Operation and Maintenance of Plant Services			484,301.77		
2700 Student Transportation Services					
2800 Support Services - Central					
Total Support Services			\$484,301.77		
3000 <u>Operation of Non-Instructional Services</u>					
3200 Student Activities					
3300 Community Services					
Total Operation of Non-Instructional Services					
4000 <u>Facilities Acquisition, Construction and Improvement Services</u>					
4200 Existing Site Improvement Services					
Total Facilities Acquisition, Construction and Improvement Services					
5000 <u>Other Expenditures and Financing Uses</u>					
5100 Debt Service / Other Expenditures and Financing Uses					
5200 Interfund Transfers - Out					
Total Other Expenditures and Financing Uses					
TOTAL ACTUAL EXPENDITURES & OTHER FINANCING USES			\$484,301.77		

LEA : 111444602 Mifflin County SD

Printed 12/19/2022 8:59:13 AM

	<u>Total</u>
1000 <u>Instruction</u>	
1100 Regular Programs - Elementary / Secondary	31,543,736.95
1200 Special Programs - Elementary / Secondary	12,705,775.06
1300 Vocational Education	3,804,836.21
1400 Other Instructional Programs - Elementary / Secondary	1,249,901.55
1500 Nonpublic School Programs	103,887.57
Total Instruction	\$49,408,137.34
2000 <u>Support Services</u>	
2100 Support Services - Students	2,511,197.22
2200 Support Services - Instructional Staff	1,443,275.58
2300 Support Services - Administration	4,545,549.68
2400 Support Services - Pupil Health	872,057.87
2500 Support Services - Business	879,994.56
2600 Operation and Maintenance of Plant Services	8,036,109.71
2700 Student Transportation Services	4,848,829.96
2800 Support Services - Central	4,646,318.67
Total Support Services	\$27,783,333.25
3000 <u>Operation of Non-Instructional Services</u>	
3200 Student Activities	1,142,389.98
3300 Community Services	20,217.57
Total Operation of Non-Instructional Services	\$1,162,607.55
4000 <u>Facilities Acquisition, Construction and Improvement Services</u>	
4200 Existing Site Improvement Services	39,525.00
Total Facilities Acquisition, Construction and Improvement Services	\$39,525.00
5000 <u>Other Expenditures and Financing Uses</u>	
5100 Debt Service / Other Expenditures and Financing Uses	7,993,341.48
5200 Interfund Transfers - Out	1,000,000.00
Total Other Expenditures and Financing Uses	\$8,993,341.48
TOTAL ACTUAL EXPENDITURES & OTHER FINANCING USES	\$87,386,944.62

LEA : 111444602 Mifflin County SD

Printed 12/19/2022 8:59:21 AM

PSERS Salary Data (Salary Data should relate to the General Fund only)

Amount	Description	Amount
	Total Salary Base for salaries subject to PSERS withholding	30,661,939.00
	Total Federally Funded salaries subject to PSERS withholding	4,716,609.00

Title I Expenditure Data

Amount	Description	Amount
	Expenditures Funded with Current Title I Funds	1,560,419.00
	Expenditures Funded with Carry over Title I Funds	702,571.00
Total	Title I Expenditure Data	\$2,262,990.00

Title IV Revenue Data

Amount	Description	Amount
	Revenue from Title IV-A-1: Student Support and Academic Enrichment Grants	174,659.87
	Revenue from Title IV-B: 21st Century Community Learning Centers	

Title V Revenue Data

Amount	Description	Amount
	Revenue from Title V-B-2: Rural and Low-Income School Programs	111,814.97
	Revenue from Title V-B-1: Small Rural School Achievement (Directly from the Federal Govt)	

1 . <u>Current Special Education Expenditures within Function 1000.\r\nSee list of exclusions in the note below.</u>	15,577,382.41
2 . <u>Current Special Education Expenditures within Function 2000.\r\nSee list of exclusions in the note below.</u>	5,412,792.33
3 . <u>Current Special Education Expenditures within Sub-Function 2100.\r\nThis data should also be included in line 2 above.\r\nSee list of exclusions in the note below.</u>	1,180,413.43
4 . <u>Current Special Education Expenditures within Sub-Function 2200.\r\nThis data should also be included in line 2 above.\r\nSee list of exclusions in the note below.</u>	496,391.13
5 . <u>Current Special Education Expenditures within Sub-Function 2700.\r\nThis data should also be included in line 2 above.\r\nSee list of exclusions in the note below.</u>	789,061.56
6 . <u>Current Special Education Expenditures within Sub-Function 3100.\r\nSee list of exclusions in the note below.</u>	
7 . <u>Current Special Education Expenditures within Sub-Function 3200.\r\nSee list of exclusions in the note below.</u>	72,447.68

Note: The Current Special Education Expenditure amounts for each line should be calculated as follows:

- * Include the total expenditures for special education costs from all funds for the function/sub-function requested
- * Exclude data from sub-functions: 1243,1450,1500,1600,1807,2280,2450,2750,2990
- * Exclude data from objects: 322,511,512,516,561,562,564,566,592,593,594,595,596,597,700,830,899

Benefits for Staff Relative to Collective Bargaining Agreements

	OBJECT	COVERED	NOT COVERED	TOTAL
10 General Fund	No Self Insurance data to report			
	211 Medical Insurance	7,560,287.00	785,665.00	8,345,952.00
	212 Dental Insurance	307,047.00	32,022.00	339,069.00
	215 Eye Care Insurance	46,266.00	4,098.00	50,364.00
	216 Prescription Insurance			
	271 Self-Insurance Medical Benefits			
	272 Self-Insurance Dental Benefits			
	275 Self-Insurance Eye Care Benefits			
	276 Self-Insurance Prescription Benefits			
	FUND TOTAL	\$7,913,600.00	\$821,785.00	\$8,735,385.00
50 Enterprise Fund	No Self Insurance data to report			
	211 Medical Insurance	228,670.00		228,670.00
	212 Dental Insurance	8,549.00		8,549.00
	215 Eye Care Insurance	1,982.00		1,982.00
	216 Prescription Insurance			
	271 Self-Insurance Medical Benefits			
	272 Self-Insurance Dental Benefits			
	275 Self-Insurance Eye Care Benefits			
	276 Self-Insurance Prescription Benefits			
	FUND TOTAL	\$239,201.00		\$239,201.00
60 Internal Service Fund	No Self Insurance data to report			
	211 Medical Insurance			
	212 Dental Insurance			
	215 Eye Care Insurance			
	216 Prescription Insurance			
	271 Self-Insurance Medical Benefits			
	272 Self-Insurance Dental Benefits			
	275 Self-Insurance Eye Care Benefits			
	276 Self-Insurance Prescription Benefits			
	FUND TOTAL			
Total of All Funds		\$8,152,801.00	\$821,785.00	\$8,974,586.00

LEA : 111444602 Mifflin County SD

Printed 12/19/2022 8:59:33 AM

Function	Special Education (Prior Year)	Nonspecial Education (Prior Year)	Total (Prior Year)	Special Education (Current Year)	Nonspecial Education (Current Year)	Total (Current Year)
2120 Guidance Services	229,374.40	1,181,292.00	1,410,666.40	243,279.85	1,221,150.80	1,464,430.65
2140 Psychological Services	413,593.23	137,864.41	551,457.64	563,851.00	187,950.00	751,801.00
2150 Speech Pathology and Audiology Services						
2160 Social Work Services	30,316.36	156,131.13	186,447.49	42,298.50	212,318.67	254,617.17
2260 Instruction and Curriculum Development Services	67,818.39	349,268.84	417,087.23	67,573.16	339,185.56	406,758.72
2350 Legal and Accounting Services	17,468.83	95,594.09	113,062.92	2,596.00	32,588.00	35,184.00
2420 Medical Services						
2440 Nursing Services	138,353.50	712,529.02	850,882.52	144,871.39	727,186.48	872,057.87
2700 Student Transportation Services	759,580.09	3,911,884.16	4,671,464.25	805,516.20	4,043,313.75	4,848,829.95
Total	\$1,656,504.80	\$6,544,563.65	\$8,201,068.45	\$1,869,986.10	\$6,763,693.26	\$8,633,679.36

LEA : 111444602 Mifflin County SD

Printed 12/19/2022 8:59:37 AM

(PRINCIPAL AMOUNTS ONLY)								
GOVERNMENTAL FUNDS/ ACTIVITIES	Short-Term Borrowing	General Obligation Bonds/Notes	Authority Building Obligations	OLTD, Ext Term Fin, Leases	Other Post- Employment Benefits (OPEB)	Compensated Absences	Net Pension Liability	Total
1. Debt at Beginning of Fiscal Year		79,560,000.00		7,310,450.00	15,007,487.00	2,278,629.00	91,565,094.00	195,721,660.00
2. Additional Debt Incurred During Year								
3. Retirements and Repayments		4,830,000.00		624,349.00	5,733,531.00	248,754.00	19,001,086.00	30,437,720.00
4. Debt at End of Fiscal Year		74,730,000.00		6,686,101.00	9,273,956.00	2,029,875.00	72,564,008.00	165,283,940.00
5. Accreted Interest at End Of Fiscal Year								
6. Total Debt and Accreted Interest		74,730,000.00		6,686,101.00	9,273,956.00	2,029,875.00	72,564,008.00	165,283,940.00
7. Current Portion P&I - Due within 1 year		8,294,439.00		811,642.00				9,106,081.00
8. Interest Paid during current fiscal year		3,154,718.78						3,154,718.78

(PRINCIPAL AMOUNTS ONLY)								
PROPRIETARY FUNDS	Short-Term Borrowing	General Obligation Bonds/Notes	Authority Building Obligations	OLTD, Ext Term Fin, Leases	Other Post- Employment Benefits (OPEB)	Compensated Absences	Net Pension Liability	Total
1. Debt at Beginning of Fiscal Year					404,581.29	60,482.50	2,575,118.66	3,040,182.45
2. Additional Debt Incurred During Year						374.96		374.96
3. Retirements and Repayments					208,308.44		392,937.13	601,245.57
4. Debt at End of Fiscal Year					196,272.85	60,857.46	2,182,181.53	2,439,311.84
5. Accreted Interest at End Of Fiscal Year								
6. Total Debt and Accreted Interest					196,272.85	60,857.46	2,182,181.53	2,439,311.84
7. Current Portion P&I - Due within 1 year								
8. Interest Paid during current fiscal year								

LEA : 111444602 Mifflin County SD

Printed 12/19/2022 8:59:37 AM

Total Principal and Interest Payments Made by Your School - All Funds

Function	Fund		Principal (910)	Principal (920)	Interest (830)	Total (Principal +Interest)	Misc Other Uses (990)
5110	10	General Fund	4,830,000.00		3,154,718.78	7,984,718.78	
5110	20	Special Revenue Funds					
5110	30	Capital Projects Funds					
5110	40	Debt Service Fund					
5110	90	Permanent Fund					
5120	10	General Fund					
5120	20	Special Revenue Funds					
5120	30	Capital Projects Funds					
5120	40	Debt Service Fund					
5140	10	General Fund					
5140	20	Special Revenue Funds					
5140	30	Capital Projects Funds					
5140	40	Debt Service Fund					
5140	90	Permanent Fund					
Total Debt Payments - Governmental Funds			\$4,830,000.00		\$3,154,718.78	\$7,984,718.78	

Function	Fund		Principal (910)	Principal (920)	Interest (830)	Total (Principal +Interest)
5110	50	Enterprise Fund				
5110	60	Internal Service Fund				
5120	50	Enterprise Fund				
5120	60	Internal Service Fund				
5140	50	Enterprise Fund				
5140	60	Internal Service Fund				
Total Debt Payments - Proprietary Funds						

LEA : 111444602 Mifflin County SD

Printed 12/19/2022 8:59:37 AM

Debt Details
Governmental Funds/ Activities

Debt Category	Debt Issue Date (MM/YYYY)	Debt at Beginning of Fiscal Year	Principal Amounts Only			Current Portion Due Within One Year (Principal and Interest)	Interest Paid During Fiscal Year
			Additions	Reductions / Repayments	Debt at End of Fiscal Year		
General Obligation Bonds/Notes – CIB	03/2020	14,390,000.00		765,000.00	13,625,000.00	1,616,885.00	487,010.00
General Obligation Bonds/Notes – CIB	05/2019	8,195,000.00		5,000.00	8,190,000.00	332,005.00	327,102.50
General Obligation Bonds/Notes – CIB	06/2019	7,505,000.00		485,000.00	7,020,000.00	681,968.00	194,342.50
General Obligation Bonds/Notes – CIB	04/2018	9,975,000.00		10,000.00	9,965,000.00	336,856.00	327,088.78
General Obligation Bonds/Notes – CIB	12/2016	19,930,000.00		1,655,000.00	18,275,000.00	2,588,125.00	932,625.00
General Obligation Bonds/Notes – CIB	03/2016	19,565,000.00		1,910,000.00	17,655,000.00	2,738,600.00	886,550.00
Other Long Term Debt/Liabilities		7,310,450.00		624,349.00	6,686,101.00	811,642.00	
Compensated Absences		2,278,629.00		248,754.00	2,029,875.00		
Other Post-Employment Benefits (OPEB)		15,007,487.00		5,733,531.00	9,273,956.00		
Net Pension Liability		91,565,094.00		19,001,086.00	72,564,008.00		
Totals for Debt Entered:		\$195,721,660.00		\$30,437,720.00	\$165,283,940.00	\$9,106,081.00	\$3,154,718.78

Bond Details
Proprietary Funds

Debt Category	Debt Issue Date (MM/YYYY)	Debt at Beginning of Fiscal Year	Principal Amounts Only			Current Portion Due Within One Year (Principal and Interest)	Interest Paid During Fiscal Year
			Additions	Reductions / Repayments	Debt at End of Fiscal Year		
Compensated Absences		60,482.50	374.96		60,857.46		
Other Post-Employment Benefits (OPEB)		404,581.29		208,308.44	196,272.85		
Net Pension Liability		2,575,118.66		392,937.13	2,182,181.53		
Totals for Debt Entered:		\$3,040,182.45	\$374.96	\$601,245.57	\$2,439,311.84		

LEA : 111444602 Mifflin County SD

Printed 12/19/2022 8:59:41 AM

General Fund (10)

Section 1: Tuition/Purchased Services as Reported within Expenditure Detail	Amount
Tuition Reported in General Fund Expenditures 1000-560	6,706,712.20
Purchased Services in General Fund Expenditures 1000-594 and 1000-597	1,536.21
Section 1 Total	\$6,708,248.41

Section 2: Tuition Paid to Institution Types During Fiscal Year	Tuition Paid For Nonspecial Education	Tuition Paid For Special Education	Total
1 1306 Institutions	77,988.15	18,168.20	96,156.35
2 Institutionalized Children's Programs	16,510.00	1,536.21	18,046.21
3 Juveniles Incarcerated in Adult Facilities	12,216.22		12,216.22
4 Residential Treatment Facilities	15,952.00	480.00	16,432.00
5 Other Local Education Agencies	16,703.00	56,650.81	73,353.81
6 Brick and Mortar Charter Schools	392,442.70	374,230.81	766,673.51
7 Cyber Charter Schools	1,706,889.31	854,031.91	2,560,921.22
8 Career and Technology Centers	1,613,854.03	455,890.97	2,069,745.00
9 Approved Private Schools	9,985.14	7,499.40	17,484.54
10 PA Chartered Schools for the Deaf and Blind			
11 Private Residential Rehabilitative Institutions	14,181.41	5,379.38	19,560.79
12 Juvenile Detention Centers	19,899.38	8,313.22	28,212.60
13 Special Program Jointures			
14 Other Tuition Not Included Elsewhere In This Section	98,676.80	930,769.36	1,029,446.16
Section 2 Total	\$3,995,298.14	\$2,712,950.27	\$6,708,248.41

LEA : 111444602 Mifflin County SD

Printed 12/19/2022 8:59:44 AM

Food Service / Cafeteria Operations Fund (51)

3000 Operation of Non-Instructional Services

Total

100 Personnel Services – Salaries

100 Personnel Services – Salaries	976,306.68
-----------------------------------	------------

Total Personnel Services – Salaries	\$976,306.68
--	---------------------

200 Personnel Services – Employee Benefits

210 Group Insurance – Contracted Provider	278,268.79
---	------------

220 Social Security Contributions	73,342.99
-----------------------------------	-----------

230 PSERS Retirement Contributions	239,194.68
------------------------------------	------------

250 Unemployment Compensation	1,952.36
-------------------------------	----------

260 Workers' Compensation	4,881.99
---------------------------	----------

280 Other Post-Employment Benefits (OPEB)	(99,108.18)
---	-------------

291 Other Retirement Plans	9,423.87
----------------------------	----------

Total Personnel Services – Employee Benefits	\$507,956.50
---	---------------------

400 Purchased Property Services

410 Cleaning Services	9,225.40
-----------------------	----------

420 Utility Services	81.45
----------------------	-------

430 Repairs and Maintenance Services	31,121.04
--------------------------------------	-----------

460 Extermination Services	500.00
----------------------------	--------

Total Purchased Property Services	\$40,927.89
--	--------------------

500 Other Purchased Services

520 Insurance – General	7,177.13
-------------------------	----------

530 Communications	1,037.91
--------------------	----------

550 Printing and Binding	1,345.00
--------------------------	----------

570 Food Service Management	135,204.89
-----------------------------	------------

580 Travel	756.64
------------	--------

Total Other Purchased Services	\$145,521.57
---------------------------------------	---------------------

600 Supplies

610 General Supplies	166,700.90
----------------------	------------

630 Food	1,204,012.32
----------	--------------

Total Supplies	\$1,370,713.22
-----------------------	-----------------------

800 Other Objects

890 Miscellaneous Expenditures	4,849.86
--------------------------------	----------

Total Other Objects	\$4,849.86
----------------------------	-------------------

Total 3000 Operation of Non-Instructional Services	\$3,046,275.72
---	-----------------------

LEA : 111444602 Mifflin County SD

Printed 12/19/2022 8:59:44 AM

Food Service / Cafeteria Operations Fund (51)

3100 Food Services	<u>Elementary</u>	<u>Secondary</u>	<u>Federal</u>	<u>Total</u>
100 <u>Personnel Services – Salaries</u>				
100 Personnel Services – Salaries				976,306.68
Total Personnel Services – Salaries				\$976,306.68
200 <u>Personnel Services – Employee Benefits</u>				
210 Group Insurance – Contracted Provider				278,268.79
220 Social Security Contributions				73,342.99
230 PSERS Retirement Contributions				239,194.68
250 Unemployment Compensation				1,952.36
260 Workers' Compensation				4,881.99
280 Other Post-Employment Benefits (OPEB)				(99,108.18)
291 Other Retirement Plans				9,423.87
Total Personnel Services – Employee Benefits				\$507,956.50
400 <u>Purchased Property Services</u>				
410 Cleaning Services				9,225.40
420 Utility Services				81.45
430 Repairs and Maintenance Services				31,121.04
460 Extermination Services				500.00
Total Purchased Property Services				\$40,927.89
500 <u>Other Purchased Services</u>				
520 Insurance – General				7,177.13
530 Communications				1,037.91
550 Printing and Binding				1,345.00
570 Food Service Management				135,204.89
580 Travel				756.64
Total Other Purchased Services				\$145,521.57
600 <u>Supplies</u>				
610 General Supplies				166,700.90
630 Food				1,204,012.32
Total Supplies				\$1,370,713.22
800 <u>Other Objects</u>				
890 Miscellaneous Expenditures				4,849.86
Total Other Objects				\$4,849.86
Total 3100 Food Services				\$3,046,275.72

	<u>Food Service(51)</u>	<u>Child Care Operations(52)</u>	<u>Other Enterprise(58)</u>	<u>Internal Service(60)</u>	<u>Total</u>
3000 <u>Operation of Non-Instructional Services</u>					
3100 Food Services	3,046,275.72				3,046,275.72
Total Operation of Non-Instructional Services	\$3,046,275.72				\$3,046,275.72
TOTAL ACTUAL EXPENDITURES & OTHER FINANCING USES	\$3,046,275.72				\$3,046,275.72

LEA : 111444602 Mifflin County SD

Printed 12/19/2022 8:59:53 AM

Fund	School	School Number	Local Personnel	Local Nonpersonnel	State Personnel	State Nonpersonnel	Federal Personnel	Federal Nonpersonnel	Total	Explanation
10										
	East Derry El Sch	6261	3,794.00	928.00	6,134.00	1,286.00	2,187.00	779.00	15,108.00	
	Indian Valley El Sch	8182	3,605.00	1,078.00	4,961.00	1,448.00	2,054.00	842.00	13,988.00	
	Indian Valley Intrmd Sch	8183	3,806.00	1,087.00	4,927.00	1,452.00	954.00	682.00	12,908.00	
	Lewistown El Sch	7789	4,158.00	961.00	6,238.00	1,301.00	2,894.00	3,477.00	19,029.00	
	Lewistown Intrmd Sch	8184	4,585.00	911.00	5,932.00	1,228.00	1,349.00	676.00	14,681.00	
	Mifflin Co HS	8187	5,563.00	1,366.00	7,194.00	1,812.00	2,072.00	764.00	18,771.00	
	Mifflin Co JHS	8186	4,576.00	850.00	5,921.00	1,146.00	687.00	642.00	13,822.00	
	Mifflin Co MS	8185	4,627.00	860.00	5,986.00	1,160.00	706.00	696.00	14,035.00	
	Strodes Mills El Sch	3196	3,910.00	964.00	5,836.00	1,306.00	3,407.00	790.00	16,213.00	
Total			38,624.00	9,005.00	53,129.00	12,139.00	16,310.00	9,348.00	138,555.00	

	<u>Nonspecial Education</u>	<u>Special Education</u>
1000 Instruction		
1100 Regular Programs - Elementary / Secondary	1,700.00	
Total Instruction	\$1,700.00	
TOTAL ACTUAL EXPENDITURES & OTHER FINANCING USES	\$1,700.00	

LEA : 111444602 Mifflin County SD

Printed 12/19/2022 9:00:03 AM

1000 Instruction

100 <u>Personnel Services - Salaries</u>	
100 Personnel Services - Salaries	1,187.00
Total Personnel Services - Salaries	\$1,187.00
200 <u>Personnel Services - Employee Benefits</u>	
220 Social Security Contributions	90.00
230 PSERS Retirement Contributions	415.00
250 Unemployment Compensation	2.00
260 Workers' Compensation	6.00
Total Personnel Services - Employee Benefits	\$513.00
Total 1000 Instruction	\$1,700.00

LEA : 111444602 Mifflin County SD

Printed 12/19/2022 9:00:03 AM

1100 Regular Programs - Elementary / Secondary	<u>Nonspecial Education</u>	<u>Special Education</u>
100 <u>Personnel Services - Salaries</u>		
100 Personnel Services - Salaries	1,187.00	
Total Personnel Services - Salaries	\$1,187.00	
200 <u>Personnel Services - Employee Benefits</u>		
220 Social Security Contributions	90.00	
230 PSERS Retirement Contributions	415.00	
250 Unemployment Compensation	2.00	
260 Workers' Compensation	6.00	
Total Personnel Services - Employee Benefits	\$513.00	
Total 1100 Regular Programs - Elementary / Secondary	\$1,700.00	

LEA : 111444602 Mifflin County SD

Printed 12/19/2022 9:00:03 AM

1110 Regular Programs

	<u>Nonspecial Education</u>	<u>Special Education</u>
100 <u>Personnel Services - Salaries</u>		
100 Personnel Services - Salaries	1,187.00	
Total Personnel Services - Salaries	\$1,187.00	
200 <u>Personnel Services - Employee Benefits</u>		
220 Social Security Contributions	90.00	
230 PSERS Retirement Contributions	415.00	
250 Unemployment Compensation	2.00	
260 Workers' Compensation	6.00	
Total Personnel Services - Employee Benefits	\$513.00	
Total 1110 Regular Programs	\$1,700.00	