

LEA Name : Mifflin County SD
Address : 201 Eighth St - Highland Park
Lewistown , PA 17044

County : Mifflin
AUN Number : 111444602
LEA Type : SD

Annual Financial Report Accuracy Certification Statement

For Fiscal Year Ending
6/30/2021

Pennsylvania Department of Education


&

Office of Comptroller Operations

PDE-2056: Intermediate Unit


PDE-2057: School District, AVTS/CTC, Charter School,
and Special Program Jointure

CERTIFICATION: By signing this page I agree that the electronic data submitted is a complete and accurate statement of the financial operations and status of the local education agency for the fiscal year. It has been prepared in accordance with generally accepted accounting principles and established Commonwealth of PA reporting guidelines.



Chief School Administrator Signature

Date 12/22/2021



Board Secretary Signature

Date 12/21/2021

Melinda Kenepp

Contact Person

(717)248-0148 Ext :

Contact Person Telephone Number

mkk08@mcsdk12.org

Contact Person E-mail Address

Contact Person Fax Number

Audit Certification
Annual Financial Report:
For Fiscal Year Ending **6/30/2021**
(Pursuant to PA School Code Section 218(b))

LEA Name : Mifflin County SD
AUN Number : 111444602
County : Mifflin

Audit Certification Due: 12/31/2021

This certification is applicable to the Annual Financial Report data submitted through the Consolidated Financial Reporting System (CFRS).

CERTIFICATION: By signing this page I agree that the financial statements of the school have been properly audited as noted above pursuant to Article XXIV, and in the auditor's professional opinion, the Annual Financial Report (PDE-2057) submitted through CFRS is materially consistent with the audited financial statements.

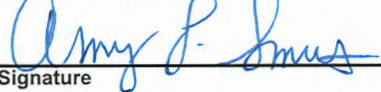
Chief School Administrator



Signature

12/21/2021
Date

Board Secretary



Signature

12/21/2021
Date

Melinda Kenepf

Contact Person

mkk08@mcsdk12.org

Contact Person E-mail Address

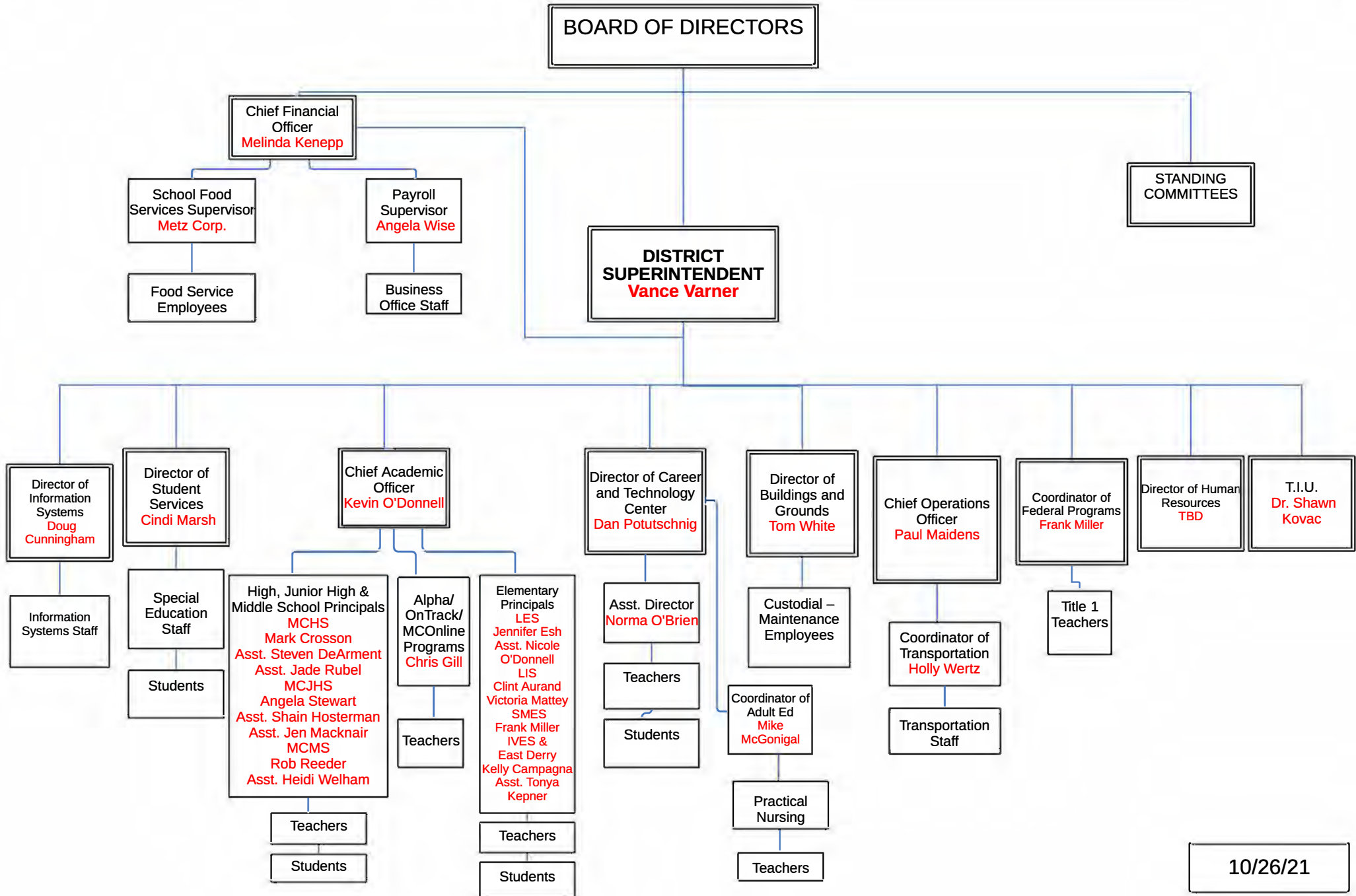
(717)248-0148

Ext :

Contact Person Telephone Number

Contact Person Fax Number

ADMINISTRATIVE ORGANIZATION MIFFLIN COUNTY SCHOOL DISTRICT



10/26/21



Book	Policy Manual
Section	700 Property
Title	Property Records - Equipment Definition
Number	706.2
Status	Active
Adopted	July 1, 2015

Purpose

Independent asset units shall be classified as equipment in the district's accounting records which have a per unit cost equal to or greater than \$5,000 and have an estimated useful life of one (1) year or more.

In addition to the above criteria, the item should:

1. Retain its original shape, appearance, and character with use;
2. Not lose its identity through incorporation or fabrication into a different or more complex unit or substance; and
3. Be more feasible to repair rather than replace when a failure occurs.

If an independent asset does not meet the criteria listed above, it should not be classified as a supply item.

The cost of normal maintenance and repairs that do not add to the value of the asset or materially extend assets lives are not capitalized.

Capital Assets

Buildings, building improvements, equipment, and improvements other than buildings of the school district and its component unit are depreciated using the straight-line method over the following estimated lives:[1]

<u>Assets</u>	<u>Years</u>
Buildings	15 - 40
Building improvements	5 - 30
Equipment	3 - 20
Improvements other than buildings	10 - 20

Legal 1. Pol. 622
 Pol. 706

Last Modified by Leann Shaw on April 25, 2017

<u>Val Number</u>	<u>Description</u>	<u>Justification</u>
50118	<p>SOIN: Reductions/Retirements have been reported for General Obligation Bonds, Authority Building Obligations and Other Long Term Debt however, comparable entries have not been reported in Governmental Fund Expenditure Functions 5110 & 5120, Objects 910 and 920. Please correct or provide a justification.</p> <p>SOIN: GOB, ABO, and Other Long Term Debt Retirements/Repayments: \$4,528,950.00 Governmental Funds Expenditure Detail: Function 5110/5120, Object 910/920: \$3,904,600.53</p>	Amortization of discounts/premiums related to various bond issues reflected on the government-wide statements only
50430	<p>SESS - 2160 Social Work Services: SESS Schedule amounts for Special Education vary from prior year by 40% or more. Correct the data or enter a justification.</p> <p>SESS Schedule 2160: \$30,316.36 Prior Year SESS Schedule 2160: \$14,844.13</p>	PY SESS Schedule 2160 SHB \$27,983.52

Amounts Expressed in Whole Dollars

	<u>General Fund</u> <u>(10)</u>	<u>Student Sponsored</u> <u>Activity Fund</u> <u>(21)</u>	<u>Public Purpose Trust</u> <u>(27)</u>	<u>Other Compt Approved</u> <u>(28)</u>	<u>Athletic / Activity</u> <u>(29)</u>
Assets And Deferred Outflows Of Resources					
Assets					
0100 Cash and Cash Equivalents	14,463,650				
0110 Investments					
0120 Taxes Receivable	1,839,903				
0130 Due From Other Funds	1,471,667				
0141 Due From Other Governments	1,117,261				
0142 State Revenue Receivable	2,732,720				
0143 Federal Revenue Receivable	3,173,099				
0145 Other Intergovernmental Revenue Receivable					
0146 Due from Primary Government					
0147 Due from Component Unit					
0150 Other Receivables	1,547,007				
0170 Inventories					
0180 Prepaid Expenses (Expenditures)	315,197				
0190 Other Current Assets					
Total Assets	\$26,660,504				
0910 Deferred Outflows of Resources					
Total Assets And Deferred Outflows Of Resources	\$26,660,504				

Amounts Expressed in Whole Dollars

	<u>Capital Reserve (690.</u> <u>1850)</u> <u>(31)</u>	<u>Capital Reserve (1431)</u> <u>(32)</u>	<u>Other Capital Projects</u> <u>Fund</u> <u>(39)</u>	<u>Debt Service</u> <u>(40)</u>	<u>Permanent</u> <u>(90)</u>
Assets And Deferred Outflows Of Resources					
Assets					
0100 Cash and Cash Equivalents			5,775,706	8,831	
0110 Investments					
0120 Taxes Receivable					
0130 Due From Other Funds			1,000,000		
0141 Due From Other Governments					
0142 State Revenue Receivable					
0143 Federal Revenue Receivable					
0145 Other Intergovernmental Revenue Receivable					
0146 Due from Primary Government					
0147 Due from Component Unit					
0150 Other Receivables					
0170 Inventories					
0180 Prepaid Expenses (Expenditures)					
0190 Other Current Assets					
Total Assets			\$6,775,706	\$8,831	
0910 Deferred Outflows of Resources					
Total Assets And Deferred Outflows Of Resources			\$6,775,706	\$8,831	

Amounts Expressed in Whole Dollars

Total Governmental Funds

Assets And Deferred Outflows Of Resources

Assets	
0100 Cash and Cash Equivalents	20,248,187
0110 Investments	
0120 Taxes Receivable	1,839,903
0130 Due From Other Funds	2,471,667
0141 Due From Other Governments	1,117,261
0142 State Revenue Receivable	2,732,720
0143 Federal Revenue Receivable	3,173,099
0145 Other Intergovernmental Revenue Receivable	
0146 Due from Primary Government	
0147 Due from Component Unit	
0150 Other Receivables	1,547,007
0170 Inventories	
0180 Prepaid Expenses (Expenditures)	315,197
0190 Other Current Assets	
Total Assets	\$33,445,041
0910 Deferred Outflows of Resources	
Total Assets And Deferred Outflows Of Resources	\$33,445,041

Amounts Expressed in Whole Dollars

	<u>General Fund</u> <u>(10)</u>	<u>Student Sponsored</u> <u>Activity Fund</u> <u>(21)</u>	<u>Public Purpose Trust</u> <u>(27)</u>	<u>Other Compt Approved</u> <u>(28)</u>	<u>Athletic / Activity</u> <u>(29)</u>
Liabilities And Deferred Inflows Of Resources And Fund Balances					
Liabilities					
0400 Due to Other Funds	1,013,450				
0411 Due to Other Governments					
0412 Due to Primary Government					
0413 Due to Component Unit					
0420 Accounts Payable	1,111,718				
0430 Contracts Payable					
0440 Current Portion of Long-Term Debt					
0450 Short-Term Payables					
0461 Accrued Salaries and Benefits	7,665,469				
0462 Payroll Deductions and Withholding	366,401				
0480 Unearned Revenues	1,953,196				
0490 Other Current Liabilities	50,876				
Total Liabilities	\$12,161,110				
0950 Deferred Inflows of Resources					
Fund Balances					
0810 Nonspendable Fund Balance	315,197				
0820 Restricted Fund Balance					
0830 Committed Fund Balance	94,328				
0840 Assigned Fund Balance	7,216,140				
0850 Unassigned Fund Balance	6,873,729				
Total Fund Balances	\$14,499,394				
Total Liabilities, Deferred Inflows Of Resources And Fund Balances	\$26,660,504				

Amounts Expressed in Whole Dollars

	<u>Capital Reserve (690.</u> <u>1850)</u> <u>(31)</u>	<u>Capital Reserve (1431)</u> <u>(32)</u>	<u>Other Capital Projects</u> <u>Fund</u> <u>(39)</u>	<u>Debt Service</u> <u>(40)</u>	<u>Permanent</u> <u>(90)</u>
Liabilities And Deferred Inflows Of Resources And Fund Balances					
Liabilities					
0400 Due to Other Funds			68,250		
0411 Due to Other Governments					
0412 Due to Primary Government					
0413 Due to Component Unit					
0420 Accounts Payable					
0430 Contracts Payable					
0440 Current Portion of Long-Term Debt					
0450 Short-Term Payables					
0461 Accrued Salaries and Benefits					
0462 Payroll Deductions and Withholding					
0480 Unearned Revenues					
0490 Other Current Liabilities					
Total Liabilities			\$68,250		
0950 Deferred Inflows of Resources					
Fund Balances					
0810 Nonspendable Fund Balance					
0820 Restricted Fund Balance					
0830 Committed Fund Balance			439,500		
0840 Assigned Fund Balance			6,267,956	8,831	
0850 Unassigned Fund Balance					
Total Fund Balances			\$6,707,456	\$8,831	
Total Liabilities, Deferred Inflows Of Resources And Fund Balances			\$6,775,706	\$8,831	

Amounts Expressed in Whole Dollars

Total Governmental Funds

Liabilities And Deferred Inflows Of Resources And Fund Balances

Liabilities

0400 Due to Other Funds	1,081,700
0411 Due to Other Governments	
0412 Due to Primary Government	
0413 Due to Component Unit	
0420 Accounts Payable	1,111,718
0430 Contracts Payable	
0440 Current Portion of Long-Term Debt	
0450 Short-Term Payables	
0461 Accrued Salaries and Benefits	7,665,469
0462 Payroll Deductions and Withholding	366,401
0480 Unearned Revenues	1,953,196
0490 Other Current Liabilities	50,876

Total Liabilities \$12,229,360

0950 Deferred Inflows of Resources

Fund Balances

0810 Nonspendable Fund Balance	315,197
0820 Restricted Fund Balance	
0830 Committed Fund Balance	533,828
0840 Assigned Fund Balance	13,492,927
0850 Unassigned Fund Balance	6,873,729

Total Fund Balances \$21,215,681

Total Liabilities, Deferred Inflows Of Resources And Fund Balances \$33,445,041

Amounts Expressed in Whole Dollars	<u>General Fund</u> <u>(10)</u>	<u>Student Sponsored</u> <u>Activity Fund</u> <u>(21)</u>	<u>Public Purpose Trust</u> <u>(27)</u>	<u>Other Compt Approved</u> <u>(28)</u>	<u>Athletic / Activity</u> <u>(29)</u>
Revenues					
6000 Revenue from Local Sources	36,538,010				
7000 Revenue from State Sources	40,925,979				
8000 Revenue from Federal Sources	7,865,821				
Total Revenues	\$85,329,810				
Expenditures					
1000 Instruction	47,686,935				
2000 Support Services	25,179,284				
3000 Operation of Non-Instructional Services	980,609				
4000 Facilities Acquisition, Construction and Improvement Services					
5110 Debt Service	7,157,533				
5130 Refund of Prior Year Revenues / Receipts	2,566				
Total Expenditures	\$81,006,927				
Excess (Deficiency) Of Revenues Over Expenditures	\$4,322,883				
Other Financing Sources (Uses)					
9110 Face Value of Bonds Issued					
9120 Proceeds from Refunding of Bonds					
9130 Bond Premiums					
9200 Proceeds from Extended-Term Financing					
9300 Interfund Transfers - IN					
9400 Sale of or Compensation for Loss of Fixed Assets					
9710 Transfers from Component Units					
9720 Transfers from Primary Governments					
9910 Other Financing Sources Not Listed in the 9000 Series					
9990 Insurance Recoveries					
5120 Debt Service – Refunded Bonds					
5150 Bond Discounts					
5200 Interfund Transfers – Out	1,013,450				
5300 Transfers Out to Component Units/Primary Governments					
Total Other Financing Sources (Uses)	(\$1,013,450)				

Amounts Expressed in Whole Dollars	<u>Capital Reserve (690.</u> <u>1850</u> <u>(31)</u>	<u>Capital Reserve (1431)</u> <u>(32)</u>	<u>Other Capital Projects</u> <u>Fund</u> <u>(39)</u>	<u>Debt Service</u> <u>(40)</u>	<u>Permanent</u> <u>(90)</u>
Revenues					
6000 Revenue from Local Sources			6,437		
7000 Revenue from State Sources					
8000 Revenue from Federal Sources					
Total Revenues			\$6,437		
Expenditures					
1000 Instruction					
2000 Support Services			383,233		
3000 Operation of Non-Instructional Services					
4000 Facilities Acquisition, Construction and Improvement Services			3,591,613		
5110 Debt Service			68,250		
5130 Refund of Prior Year Revenues / Receipts					
Total Expenditures			\$4,043,096		
Excess (Deficiency) Of Revenues Over Expenditures			(\$4,036,659)		
Other Financing Sources (Uses)					
9110 Face Value of Bonds Issued					
9120 Proceeds from Refunding of Bonds					
9130 Bond Premiums					
9200 Proceeds from Extended-Term Financing			1,110,000		
9300 Interfund Transfers - IN			1,000,000		
9400 Sale of or Compensation for Loss of Fixed Assets					
9710 Transfers from Component Units					
9720 Transfers from Primary Governments					
9910 Other Financing Sources Not Listed in the 9000 Series					
9990 Insurance Recoveries					
5120 Debt Service – Refunded Bonds					
5150 Bond Discounts					
5200 Interfund Transfers – Out					
5300 Transfers Out to Component Units/Primary Governments					
Total Other Financing Sources (Uses)			\$2,110,000		

Amounts Expressed in Whole Dollars	<u>Total Governmental Funds</u>
Revenues	
6000 Revenue from Local Sources	36,544,447
7000 Revenue from State Sources	40,925,979
8000 Revenue from Federal Sources	7,865,821
Total Revenues	\$85,336,247
Expenditures	
1000 Instruction	47,686,935
2000 Support Services	25,562,517
3000 Operation of Non-Instructional Services	980,609
4000 Facilities Acquisition, Construction and Improvement Services	3,591,613
5110 Debt Service	7,225,783
5130 Refund of Prior Year Revenues / Receipts	2,566
Total Expenditures	\$85,050,023
Excess (Deficiency) Of Revenues Over Expenditures	\$286,224
Other Financing Sources (Uses)	
9110 Face Value of Bonds Issued	
9120 Proceeds from Refunding of Bonds	
9130 Bond Premiums	
9200 Proceeds from Extended-Term Financing	1,110,000
9300 Interfund Transfers - IN	1,000,000
9400 Sale of or Compensation for Loss of Fixed Assets	
9710 Transfers from Component Units	
9720 Transfers from Primary Governments	
9910 Other Financing Sources Not Listed in the 9000 Series	
9990 Insurance Recoveries	
5120 Debt Service – Refunded Bonds	
5150 Bond Discounts	
5200 Interfund Transfers – Out	1,013,450
5300 Transfers Out to Component Units/Primary Governments	
Total Other Financing Sources (Uses)	\$1,096,550

Amounts Expressed in Whole Dollars	<u>General Fund</u> <u>(10)</u>	<u>Student Sponsored</u> <u>Activity Fund</u> <u>(21)</u>	<u>Public Purpose Trust</u> <u>(27)</u>	<u>Other Compt Approved</u> <u>(28)</u>	<u>Athletic / Activity</u> <u>(29)</u>
Special And Extraordinary Items					
9920 Special Items – Gains					
9930 Extraordinary Items – Gains					
5520 Special Items – Losses					
5530 Extraordinary Items – Losses					
Net Change In Fund Balances	\$3,309,433				
Fund Balance					
0001 Fund Balance - Beginning of Fiscal Year	11,189,961				
Fund Balance - End Of Year	\$14,499,394				

Amounts Expressed in Whole Dollars	<u>Capital Reserve (690.</u> <u>1850</u> <u>(31)</u>	<u>Capital Reserve (1431)</u> <u>(32)</u>	<u>Other Capital Projects</u> <u>Fund</u> <u>(39)</u>	<u>Debt Service</u> <u>(40)</u>	<u>Permanent</u> <u>(90)</u>
Special And Extraordinary Items					
9920 Special Items – Gains					
9930 Extraordinary Items – Gains					
5520 Special Items – Losses					
5530 Extraordinary Items – Losses					
Net Change In Fund Balances			(\$1,926,659)		
Fund Balance					
0001 Fund Balance - Beginning of Fiscal Year			8,634,115	8,831	
Fund Balance - End Of Year			\$6,707,456	\$8,831	

Amounts Expressed in Whole Dollars	<u>Total Governmental Funds</u>
Special And Extraordinary Items	
9920 Special Items – Gains	
9930 Extraordinary Items – Gains	
5520 Special Items – Losses	
5530 Extraordinary Items – Losses	
Net Change In Fund Balances	\$1,382,774
Fund Balance	
0001 Fund Balance - Beginning of Fiscal Year	19,832,907
Fund Balance - End Of Year	\$21,215,681

Amounts Expressed in Whole Dollars	<u>Food Service</u> (51)	<u>Child Care</u> <u>Operations</u> (52)	<u>Other Enterprise</u> (58)	<u>TOTAL</u>	<u>Internal Service</u> (60)
Assets And Deferred Outflows Of Resources					
Current Assets					
0100 Cash and Cash Equivalents	798,006			798,006	
0110 Investments					
0130 Due From Other Funds	13,450			13,450	
0141 Due From Other Governments					
0142 State Revenue Receivable	1,810			1,810	
0143 Federal Revenue Receivable	49,316			49,316	
0146 Due from Primary Government					
0147 Due from Component Unit					
0150 Other Receivables					
0170 Inventories	25,173			25,173	
0180 Prepaid Expenses (Expenditures)					
0190 Other Current Assets					
Total Current Assets	\$887,755			\$887,755	
Noncurrent Assets					
0211 Land					
0212 Site Improvements (Net)					
0220 Buildings and Building Improvements (Net)					
0230 Machinery, Equipment and Furniture (Net)					
0250 Construction in Progress					
0260 Long Term Prepayments					
0290 Other Noncurrent Assets					
Total Noncurrent Assets					
0910 Deferred Outflows of Resources	223,292			223,292	
Total Assets And Deferred Outflows Of Resources	\$1,111,047			\$1,111,047	

Amounts Expressed in Whole Dollars	<u>Food Service</u> <u>(51)</u>	<u>Child Care</u> <u>Operations</u> <u>(52)</u>	<u>Other Enterprise</u> <u>(58)</u>	<u>TOTAL</u>	<u>Internal Service</u> <u>(60)</u>
Liabilities And Deferred Inflows Of Resources And Net Position					
Current Liabilities					
0400 Due to Other Funds	1,403,359			1,403,359	
0411 Due to Other Governments					
0413 Due to Component Unit					
0420 Accounts Payable	25,677			25,677	
0430 Contracts Payable					
0440 Current Portion of Long-Term Debt	465,064			465,064	
0450 Short-Term Payables					
0461 Accrued Salaries and Benefits	18,320			18,320	
0462 Payroll Deductions and Withholding					
0480 Unearned Revenues					
0490 Other Current Liabilities	53,021			53,021	
Total Current Liabilities	\$1,965,441			\$1,965,441	
Noncurrent Liabilities					
0510 Bonds Payable					
0520 Extended-Term Financing Agreements Payable					
0530 Lease-Purchase Obligations					
0540 Accumulated Compensated Absences					
0550 Authority Lease Obligations					
0560 Other Post-Employment Benefits (OPEB)					
0570 Net Pension Liability	2,575,118			2,575,118	
0599 Other Noncurrent Liabilities					
Total Noncurrent Liabilities	\$2,575,118			\$2,575,118	
Total Liabilities	\$4,540,559			\$4,540,559	
0950 Deferred Inflows of Resources	72,497			72,497	
Net Position					
0791 Net Investment in Capital Assets					
0008 Restricted Net Position (0792 – 0798)					
0799 Unrestricted Net Position	(3,502,009)			(3,502,009)	
Total Net Position	(\$3,502,009)			(\$3,502,009)	
Total Liabilities And Deferred Inflows Of Resources And Net Position	\$1,111,047			\$1,111,047	

Amounts Expressed in Whole Dollars	<u>Food Service</u> <u>(51)</u>	<u>Child Care Operations</u> <u>(52)</u>	<u>Other Enterprise</u> <u>(58)</u>	<u>TOTAL</u>	<u>Internal Service</u> <u>(60)</u>
Operating Revenues					
6600 Food Service Revenue	59,265			59,265	
0071 Charges for Services					
0072 Other Operating Revenue					
Total Operating Revenues	\$59,265			\$59,265	
Operating Expenses					
100 Personnel Services – Salaries	762,363			762,363	
200 Personnel Services – Employee Benefits	545,946			545,946	
300 Purchased Professional and Technical Services					
400 Purchased Property Services	30,945			30,945	
500 Other Purchased Services	138,586			138,586	
600 Supplies	870,125			870,125	
740 Depreciation					
810 Dues and Fees					
880 Refunds of Prior Years' Receipts					
890 Miscellaneous Expenditures	6,777			6,777	
Total Operating Expenses	\$2,354,742			\$2,354,742	
Operating Income (Loss)	(\$2,295,477)			(\$2,295,477)	
Non Operating Revenues (Expenses)					
6500 Earnings on Investments	45			45	
6920 Contributions and Donations from Private Sources	14,281			14,281	
6930 Gains or Losses on Sale of Fixed Assets					
6991 Refunds of a Prior Year Expenditure	16,327			16,327	
7000 Revenue from State Sources	204,220			204,220	
8000 Revenue from Federal Sources	1,564,095			1,564,095	
9990 Insurance Recoveries					
820 Claims and Judgments Against the LEA					
830 Interest					
TOTAL Non Operating Revenues (Expenses)	\$1,798,968			\$1,798,968	
Income (Loss) Before Contributions And Transfers	(\$496,509)			(\$496,509)	

Amounts Expressed in Whole Dollars	<u>Food Service</u> <u>(51)</u>	<u>Child Care Operations</u> <u>(52)</u>	<u>Other Enterprise</u> <u>(58)</u>	<u>TOTAL</u>	<u>Internal Service</u> <u>(60)</u>
Contributions, Transfers, and Special and Extraordinary Items					
5200 Interfund Transfers – Out					
5300 Transfers Out to Component Units/Primary Governments					
5520 Special Items – Losses					
5530 Extraordinary Items – Losses					
9300 Interfund Transfers - IN	13,450			13,450	
9500 Capital Contributions					
9700 Transfers IN From Component Units/Primary Governments					
9920 Special Items – Gains					
9930 Extraordinary Items – Gains					
Change In Net Position	(\$483,059)			(\$483,059)	
0002 Net Position - Beginning of Fiscal Year	(3,018,951)			(3,018,951)	
0003 Accounting Changes / Residual Equity Transfers					
Net Position - End Of Year	(\$3,502,010)			(\$3,502,010)	

LEA : 111444602 Mifflin County SD

Printed 12/22/2021 11:32:40 AM

Amounts Expressed in Whole Dollars	<u>Food Service</u> (51)	<u>Child Care Operations</u> (52)	<u>Other Enterprise</u> (58)	<u>TOTAL</u>	<u>Internal Service(60)</u>
Cash Flows From Operating Activities					
0011 Cash Receipts From Users	77,431			77,431	
0012 Cash Receipts From Assessments Made to Other Funds					
0013 Cash Receipts From Earnings on Investments					
0014 Cash Receipts From Other Operating Revenue					
0015 Cash Payments To Employees For Services	152,418			152,418	
0016 Cash Payments For Insurance Claims					
0017 Cash Payments To Suppliers For Goods and Services	971,308			971,308	
0018 Cash Payments For Other Operating Expenses					
Net Cash Provided By (Used For) Operating Activities	(\$1,046,295)			(\$1,046,295)	
Cash Flows From Non-Capital Financing Activities					
0021 Receipts From Local Sources - 6000	14,281			14,281	
0022 Receipts From State Sources - 7000	202,462			202,462	
0023 Receipts From Federal Sources -8000	1,516,602			1,516,602	
0024 Notes and Loans Received (Repaid)					
0025 Interest Paid on Notes/Loans - 5100-830					
0026 Operating Transfers In (Out)/Residual Equity Trans					
0027 Operating Transfers In (Out) Primary Government / Comp Unit					
0028 Receipts From Refund of Prior Year Expenditures - 6991	16,327			16,327	
0029 Special and Extraordinary Gains (losses)					
0030 Receipts from Insurance Recoveries -9990					
Net Cash Prov By (Used for) Non-Capital Financing Activities	\$1,749,672			\$1,749,672	
Cash Flows From Capital and Related Financing Activities					
0031 Payments For Fac Acq, Const, and Imp - 4000					
0032 Gain / (Loss) on Sale of Fixed Assets - 6930					
0033 Proceeds From Extended Term Financing - 9200					
0034 Principal Paid on Financing Agreements					
0035 Interest Paid on Financing Agreements - 5100-830					
0036 (Inc) Dec in Contributed Capital					
Net Cash Prov By (Used for) Capital and Related Financing Activities					
Cash Flows From Investing Activities					
0041 Earnings on Investments - 6500	45			45	
0042 Purchase of Inv Securities / Deposits to Inv Pools					
0043 Receipts From Investment Pool Withdrawals					
0044 Proceeds from Sale and Maturity of Inv Securities					

LEA : 111444602 Mifflin County SD

Printed 12/22/2021 11:32:40 AM

0045 Loans Received (Paid)

Net Cash Prov By (Used for) Investing Activities

\$45

\$45

LEA : 111444602 Mifflin County SD

Printed 12/22/2021 11:32:40 AM

	<u>Food Service</u> <u>(51)</u>	<u>Child Care Operations</u> <u>(52)</u>	<u>Other Enterprise</u> <u>(58)</u>	<u>TOTAL</u>	<u>Internal Service</u> <u>(60)</u>
Net Increase (Decrease) in Cash Flows	703,422			703,422	
0004 Cash and Cash Equivalents Beginning of Year	94,584			94,584	
Cash and Cash Equivalents at Year End	\$798,006			\$798,006	
<hr/>					
Reconciliation of Operating Income (Loss) To Net Cash Provided by (Used For) Operating Activities					
0005 Operating Income (Loss) per REP	(2,295,477)			(2,295,477)	
Adjustments					
0051 Depreciation and Net Amortization					
0052 Provision for Uncollectible Accounts					
0053 Other Adjustments					
Effect of Changes in Assets, Liabilities, Deferred Outflows and Deferred Inflows					
0054 (Inc) Dec In Accounts Receivable (0120-0150)	14,297			14,297	
0055 Advances to Other Funds (0160)					
0056 (Inc) Dec in Inventories (0170)	36,615			36,615	
0057 (Inc) Dec in Prepaid Expenses (0180)	113			113	
0058 (Inc) Dec in Other Current or Noncurrent Assets					
0064 Deferred Outflows (0910)	(68,847)			(68,847)	
0059 Inc (Dec) in Accounts Payable (0400-0450)	1,225,360			1,225,360	
0060 Inc (Dec) in Accrued Salaries/Benefits (0461)	16,090			16,090	
0065 Inc (Dec) in Net Pension Liabilities (0570)	92,038			92,038	
0066 Inc (Dec) in Other Postemp Benefit Oblig (0560)	(13,480)			(13,480)	
0061 Inc (Dec) in Payroll Deductions/Withholding (0462)					
0062 Inc (Dec) in Unearned Revenue (0480)	(2,204)			(2,204)	
0063 Inc (Dec) in Other Current or Noncurrent Liabilities	(11,348)			(11,348)	
0067 Deferred Inflows (0950)	(39,452)			(39,452)	
Total Adjustments	\$1,249,182			\$1,249,182	
Cash Provided By (Used for) Total	(\$1,046,295)			(\$1,046,295)	

COMBINED STATEMENT OF CASH FLOWS
SCHEDULE OF NONCASH INVESTING, CAPITAL, AND FINANCING ACTIVITIES

Explanation of Transaction and Balance Sheet Effect	Amount
Total	

LEA : 111444602 Mifflin County SD

Printed 12/22/2021 11:32:44 AM

Amounts Expressed in Whole Dollars

	<u>Private Purpose Trust</u> <u>(71)</u>	<u>Investment Trust</u> <u>(72)</u>	<u>Pension Trust</u> <u>(73)</u>	<u>Student Activity Custodial</u> <u>(81)</u>
Assets And Deferred Outflows Of Resources				
Assets				
0100 Cash and Cash Equivalents	110,706			211,131
0110 Investments				
0130 Due From Other Funds				
0140 Due from Other Governments, Primary Government and Component Units				
0150 Other Receivables				
0170 Inventories				
0180 Prepaid Expenses (Expenditures)				
0190 Other Current Assets				
0220 Buildings and Building Improvements (Net)				
0230 Machinery, Equipment and Furniture (Net)				
Total Assets	\$110,706			\$211,131
0910 Deferred Outflows of Resources				
Total Assets And Deferred Outflows Of Resources	\$110,706			\$211,131

LEA : 111444602 Mifflin County SD

Printed 12/22/2021 11:32:44 AM

Amounts Expressed in Whole Dollars

Other Custodial
(89)

Fiduciary Component Units
(98)

Total Fiduciary Funds

Assets And Deferred Outflows Of Resources

Assets

0100 Cash and Cash Equivalents			321,837
0110 Investments			
0130 Due From Other Funds			
0140 Due from Other Governments, Primary Government and Component Units			
0150 Other Receivables			
0170 Inventories			
0180 Prepaid Expenses (Expenditures)			
0190 Other Current Assets			
0220 Buildings and Building Improvements (Net)			
0230 Machinery, Equipment and Furniture (Net)			

Total Assets **\$321,837**

0910 Deferred Outflows of Resources

Total Assets And Deferred Outflows Of Resources **\$321,837**

LEA : 111444602 Mifflin County SD

Printed 12/22/2021 11:32:44 AM

Amounts Expressed in Whole Dollars

	<u>Private Purpose Trust</u> (71)	<u>Investment Trust</u> (72)	<u>Pension Trust</u> (73)	<u>Student Activity Custodial</u> (81)
Liabilities, Deferred Inflows Of Resources And Net Position				
Liabilities				
0400 Due to Other Funds				58
0410 Due to Other Governments, Primary Government and Component Units				
0420 Accounts Payable	9,600			
0430 Contracts Payable				
0450 Short-Term Payables				
0460 Payroll Accruals and Withholdings				
0480 Unearned Revenues				
0490 Other Current Liabilities				
Total Liabilities	\$9,600			\$58
0950 Deferred Inflows of Resources				
Net Position				
0791 Net Investment in Capital Assets				
0009 Restricted Net Position (0792 – 0798)	101,106			211,073
0799 Unrestricted Net Position				
Total Net Position	\$101,106			\$211,073
Total Liabilities, Deferred Inflows Of Resources And Net Position	\$110,706			\$211,131

LEA : 111444602 Mifflin County SD

Printed 12/22/2021 11:32:44 AM

Amounts Expressed in Whole Dollars

Other Custodial
(89)

Fiduciary Component Units
(98)

Total Fiduciary Funds

Liabilities, Deferred Inflows Of Resources And Net Position

Liabilities

0400 Due to Other Funds	58
0410 Due to Other Governments, Primary Government and Component Units	
0420 Accounts Payable	9,600
0430 Contracts Payable	
0450 Short-Term Payables	
0460 Payroll Accruals and Withholdings	
0480 Unearned Revenues	
0490 Other Current Liabilities	

Total Liabilities **\$9,658**

0950 Deferred Inflows of Resources

Net Position

0791 Net Investment in Capital Assets	
0009 Restricted Net Position (0792 – 0798)	312,179
0799 Unrestricted Net Position	

Total Net Position **\$312,179**

Total Liabilities, Deferred Inflows Of Resources And Net Position **\$321,837**

Amounts Expressed in Whole Dollars	<u>Private Purpose Trust</u> <u>(71)</u>	<u>Investment Trust</u> <u>(72)</u>	<u>Pension Trust</u> <u>(73)</u>	<u>Student Activity</u> <u>Custodial</u> <u>(81)</u>	<u>Other Custodial</u> <u>(89)</u>	<u>Fiduciary Component</u> <u>Units</u> <u>(98)</u>
Additions						
0091 Gifts and Contributions	15,400			88,580		
0095 Net Investment Earnings	140			187		
0092 Other Additions				96,985		
Deductions						
0093 Scholarships Awarded	82,300					
0094 Other Deductions				229,135		
Change In Net Position	(\$66,760)			(\$43,383)		
0006 Net Position – Beginning of Fiscal Year	167,866			254,456		
0007 Net Position Held in Trust for Pension Benefits						
Net Position - End of Fiscal Year	\$101,106			\$211,073		

Amounts Expressed in Whole Dollars	<u>Total Fiduciary Funds</u>
Additions	
0091 Gifts and Contributions	103,980
0095 Net Investment Earnings	327
0092 Other Additions	96,985
Deductions	
0093 Scholarships Awarded	82,300
0094 Other Deductions	229,135
Change in Net Position	(\$110,143)
0006 Net Position – Beginning of Fiscal Year	422,322
0007 Net Position Held in Trust for Pension Benefits	
Net Position - End of Fiscal Year	\$312,179

	<u>Revenue Reported In Current Year</u>	<u>Current Year Tax Accrual</u>	<u>Prior Year Tax Accrual</u>	<u>Taxes Collected In Current Year</u>
<u>Revenue from Local Sources</u>				
6111 Current Real Estate Taxes	24,847,698.85			24,847,698.85
6112 Interim Real Estate Taxes	154,216.84			154,216.84
6113 Public Utility Realty Taxes	32,181.62			32,181.62
6114 Payments in Lieu of Current Taxes - State / Local	362,597.88			362,597.88
6120 Current Per Capita Taxes, Section 679	103,415.00			103,415.00
6141 Current Act 511 Per Capita Taxes	103,415.00			103,415.00
6143 Current Act 511 Local Services Taxes	72,898.91			72,898.91
6151 Current Act 511 Earned Income Taxes	6,944,339.08			6,944,339.08
6153 Current Act 511 Real Estate Transfer Taxes	653,721.52			653,721.52
6411 Delinquent Real Estate Taxes	2,142,828.49			2,142,828.49
6420 Delinquent Per Capita Taxes, Section 679	27,298.12			27,298.12
6440 Delinquent Local Enabling Taxes - Flat Rate Assessments	27,306.18			27,306.18
6500 Earnings on Investments	25,363.85			
6700 Revenues from LEA Activities	29,247.69			
6832 Federal IDEA Revenue Received as Pass Through	848,494.40			
6839 Federal Revenue Received from Other Sources	9,500.00			
6920 Contributions and Donations from Private Sources	3,450.00			
6944 Receipts from Other LEAs in Pennsylvania - Education	30,225.00			
6962 Other Services Provided Other Pennsylvania LEAs	9,041.00			
6969 All Other Services Provided Other Governments	36,183.00			
6999 Other Revenues Not Specified Above	74,587.53			
TOTAL Revenue from Local Sources	\$36,538,009.96			\$35,471,917.49

**Revenue Reported
In Current Year**

Revenue from State Sources

7111 Basic Education Funding-Formula	21,567,750.16
7112 Basic Education Funding-Social Security	1,364,713.26
7160 Tuition for Orphans Subsidy	103,683.65
7271 Special Education funds for School-Aged Pupils	3,574,435.49
7311 Pupil Transportation Subsidy	3,767,530.65
7312 Nonpublic and Charter School Pupil Transportation Subsidy	169,400.00
7320 Rental and Sinking Fund Payments / Building Reimbursement Subsidy	942,560.25
7330 Health Services (Medical, Dental, Nurse, Act 25)	97,977.60
7340 State Property Tax Reduction Allocation	1,921,154.83
7361 School Safety and Security Grants	233,618.31
7505 Ready to Learn Block Grant	968,914.00
7820 State Share of Retirement Contributions	6,214,240.66
TOTAL Revenue from State Sources	\$40,925,978.86

	Revenue Reported In Current Year	
Revenue from Federal Sources		
8514 NCLB, Title I - Improving the Academic Achievement of the Disadvantaged	2,250,141.18	
8515 NCLB, Title II - Preparing, Training and Recruiting High Quality Teachers and Principals	301,430.53	
8516 NCLB, Title III - Language Instruction for Limited English Proficient and Immigrant Students	11,287.00	
8517 NCLB, Title IV - 21st Century Schools	173,396.77	
8519 NCLB, Title VI - Flexibility and Accountability	96,281.91	
8741 Elementary and Secondary School Emergency Relief Fund (ESSER)	1,105,122.40	
8742 Governor's Emergency Education Relief Fund (GEER)	48,244.88	
8743 ESSER II - Elementary and Secondary School Emergency Relief Fund	2,947,858.35	
8744 ARP ESSER - Elementary and Secondary School Emergency Relief Fund	354,128.24	
8749 Other CARES Act Funding	421,731.94	
8810 School-Based Access Medicaid Reimbursement Program (SBAP) Reimbursements (Access)	121,121.16	
8820 Medical Assistance Reimbursement for Administrative Claiming (Quarterly) Program	35,076.73	
TOTAL Revenue from Federal Sources	\$7,865,821.09	
TOTAL FROM ALL SOURCES	\$85,329,809.91	\$35,471,917.49

LEA : 111444602 Mifflin County SD

Printed 12/22/2021 11:32:54 AM

	<u>General Fund (10)</u>	<u>Student Sponsored Activity Fund (21)</u>	<u>Public Purpose Trust (27)</u>	<u>Other Compt Approved (28)</u>	<u>Athletic / Activity (29)</u>	<u>Capital Reserve (690, 1850) (31)</u>
6000 Revenue from Local Sources						
6111 Current Real Estate Taxes	24,847,698.85					
6112 Interim Real Estate Taxes	154,216.84					
6113 Public Utility Realty Taxes	32,181.62					
6114 Payments in Lieu of Current Taxes - State / Local	362,597.88					
6120 Current Per Capita Taxes, Section 679	103,415.00					
6141 Current Act 511 Per Capita Taxes	103,415.00					
6143 Current Act 511 Local Services Taxes	72,898.91					
6151 Current Act 511 Earned Income Taxes	6,944,339.08					
6153 Current Act 511 Real Estate Transfer Taxes	653,721.52					
6411 Delinquent Real Estate Taxes	2,142,828.49					
6420 Delinquent Per Capita Taxes, Section 679	27,298.12					
6440 Delinquent Local Enabling Taxes - Flat Rate Assessments	27,306.18					
6500 Earnings on Investments	25,363.85					
6700 Revenues from LEA Activities	29,247.69					
6832 Federal IDEA Revenue Received as Pass Through	848,494.40					
6839 Federal Revenue Received from Other Sources	9,500.00					
6920 Contributions and Donations from Private Sources	3,450.00					
6944 Receipts from Other LEAs in Pennsylvania - Education	30,225.00					
6962 Other Services Provided Other Pennsylvania LEAs	9,041.00					
6969 All Other Services Provided Other Governments	36,183.00					
6999 Other Revenues Not Specified Above	74,587.53					
6000 Total Revenue from Local Sources	\$36,538,009.96					
7000 Revenue from State Sources						
7111 Basic Education Funding-Formula	21,567,750.16					
7112 Basic Education Funding-Social Security	1,364,713.26					
7160 Tuition for Orphans Subsidy	103,683.65					
7271 Special Education funds for School-Aged Pupils	3,574,435.49					
7311 Pupil Transportation Subsidy	3,767,530.65					
7312 Nonpublic and Charter School Pupil Transportation Subsidy	169,400.00					
7320 Rental and Sinking Fund Payments / Building Reimbursement Subsidy	942,560.25					
7330 Health Services (Medical, Dental, Nurse, Act 25)	97,977.60					
7340 State Property Tax Reduction Allocation	1,921,154.83					
7361 School Safety and Security Grants	233,618.31					
7505 Ready to Learn Block Grant	968,914.00					

LEA : 111444602 Mifflin County SD

Printed 12/22/2021 11:32:54 AM

	<u>Capital Reserve</u> <u>(1431) (32)</u>	<u>Other Capital</u> <u>Projects Fund (39)</u>	<u>Debt Service (40)</u>	<u>Permanent (90)</u>	<u>Total</u>
6000 Revenue from Local Sources					
6111 Current Real Estate Taxes					24,847,698.85
6112 Interim Real Estate Taxes					154,216.84
6113 Public Utility Realty Taxes					32,181.62
6114 Payments in Lieu of Current Taxes - State / Local					362,597.88
6120 Current Per Capita Taxes, Section 679					103,415.00
6141 Current Act 511 Per Capita Taxes					103,415.00
6143 Current Act 511 Local Services Taxes					72,898.91
6151 Current Act 511 Earned Income Taxes					6,944,339.08
6153 Current Act 511 Real Estate Transfer Taxes					653,721.52
6411 Delinquent Real Estate Taxes					2,142,828.49
6420 Delinquent Per Capita Taxes, Section 679					27,298.12
6440 Delinquent Local Enabling Taxes - Flat Rate Assessments					27,306.18
6500 Earnings on Investments		6,436.62			31,800.47
6700 Revenues from LEA Activities					29,247.69
6832 Federal IDEA Revenue Received as Pass Through					848,494.40
6839 Federal Revenue Received from Other Sources					9,500.00
6920 Contributions and Donations from Private Sources					3,450.00
6944 Receipts from Other LEAs in Pennsylvania - Education					30,225.00
6962 Other Services Provided Other Pennsylvania LEAs					9,041.00
6969 All Other Services Provided Other Governments					36,183.00
6999 Other Revenues Not Specified Above					74,587.53
6000 Total Revenue from Local Sources		\$6,436.62			\$36,544,446.58
7000 Revenue from State Sources					
7111 Basic Education Funding-Formula					21,567,750.16
7112 Basic Education Funding-Social Security					1,364,713.26
7160 Tuition for Orphans Subsidy					103,683.65
7271 Special Education funds for School-Aged Pupils					3,574,435.49
7311 Pupil Transportation Subsidy					3,767,530.65
7312 Nonpublic and Charter School Pupil Transportation Subsidy					169,400.00
7320 Rental and Sinking Fund Payments / Building Reimbursement Subsidy					942,560.25
7330 Health Services (Medical, Dental, Nurse, Act 25)					97,977.60
7340 State Property Tax Reduction Allocation					1,921,154.83
7361 School Safety and Security Grants					233,618.31
7505 Ready to Learn Block Grant					968,914.00

LEA : 111444602 Mifflin County SD

Printed 12/22/2021 11:32:54 AM

	<u>General Fund (10)</u>	<u>Student Sponsored Activity Fund (21)</u>	<u>Public Purpose Trust (27)</u>	<u>Other Compt Approved (28)</u>	<u>Athletic / Activity (29)</u>	<u>Capital Reserve (690.1850) (31)</u>
7000 Revenue from State Sources						
7820 State Share of Retirement Contributions	6,214,240.66					
7000 Total Revenue from State Sources	\$40,925,978.86					
8000 Revenue from Federal Sources						
8514 NCLB, Title I - Improving the Academic Achievement of the Disadvantaged	2,250,141.18					
8515 NCLB, Title II - Preparing, Training and Recruiting High Quality Teachers and Principals	301,430.53					
8516 NCLB, Title III - Language Instruction for Limited English Proficient and Immigrant Students	11,287.00					
8517 NCLB, Title IV - 21st Century Schools	173,396.77					
8519 NCLB, Title VI - Flexibility and Accountability	96,281.91					
8741 Elementary and Secondary School Emergency Relief Fund (ESSER)	1,105,122.40					
8742 Governor's Emergency Education Relief Fund (GEER)	48,244.88					
8743 ESSER II - Elementary and Secondary School Emergency Relief Fund	2,947,858.35					
8744 ARP ESSER - Elementary and Secondary School Emergency Relief Fund	354,128.24					
8749 Other CARES Act Funding	421,731.94					
8810 School-Based Access Medicaid Reimbursement Program (SBAP) Reimbursements (Access)	121,121.16					
8820 Medical Assistance Reimbursement for Administrative Claiming (Quarterly) Program	35,076.73					
8000 Total Revenue from Federal Sources	\$7,865,821.09					
9000 Other Financing Sources						
9290 Other Extended-Term Financing Proceeds						
9310 General Fund Transfers						
9000 Total Other Financing Sources						
Total From All Sources	\$85,329,809.91					

LEA : 111444602 Mifflin County SD

Printed 12/22/2021 11:32:54 AM

	<u>Capital Reserve</u> <u>(1431) (32)</u>	<u>Other Capital</u> <u>Projects Fund (39)</u>	<u>Debt Service (40)</u>	<u>Permanent (90)</u>	<u>Total</u>
7000 Revenue from State Sources					
7820 State Share of Retirement Contributions					6,214,240.66
7000 Total Revenue from State Sources					\$40,925,978.86
8000 Revenue from Federal Sources					
8514 NCLB, Title I - Improving the Academic Achievement of the Disadvantaged					2,250,141.18
8515 NCLB, Title II - Preparing, Training and Recruiting High Quality Teachers and Principals					301,430.53
8516 NCLB, Title III - Language Instruction for Limited English Proficient and Immigrant Students					11,287.00
8517 NCLB, Title IV - 21st Century Schools					173,396.77
8519 NCLB, Title VI - Flexibility and Accountability					96,281.91
8741 Elementary and Secondary School Emergency Relief Fund (ESSER)					1,105,122.40
8742 Governor's Emergency Education Relief Fund (GEER)					48,244.88
8743 ESSER II - Elementary and Secondary School Emergency Relief Fund					2,947,858.35
8744 ARP ESSER - Elementary and Secondary School Emergency Relief Fund					354,128.24
8749 Other CARES Act Funding					421,731.94
8810 School-Based Access Medicaid Reimbursement Program (SBAP) Reimbursements (Access)					121,121.16
8820 Medical Assistance Reimbursement for Administrative Claiming (Quarterly) Program					35,076.73
8000 Total Revenue from Federal Sources					\$7,865,821.09
9000 Other Financing Sources					
9290 Other Extended-Term Financing Proceeds		1,110,000.00			1,110,000.00
9310 General Fund Transfers		1,000,000.00			1,000,000.00
9000 Total Other Financing Sources					\$2,110,000.00
Total From All Sources					\$87,446,246.53

	<u>General Fund (10)</u>	<u>Student Sponsored Activity Fund (21)</u>	<u>Public Purpose Trust (27)</u>	<u>Other Compt Approved (28)</u>	<u>Athletic / Activity (29)</u>	<u>Capital Reserve (690, 1850) (31)</u>
Revenue from Local Sources	36,538,009.96					
Revenue from State Sources	40,925,978.86					
Revenue from Federal Sources	7,865,821.09					
Other Financing Sources						
Total From All Sources	\$85,329,809.91					

	<u>Capital Reserve (1431)</u> <u>(32)</u>	<u>Other Capital Projects</u> <u>Fund (39)</u>	<u>Debt Service (40)</u>	<u>Permanent (90)</u>	<u>Total</u>
Revenue from Local Sources		6,436.62			36,544,446.58
Revenue from State Sources					40,925,978.86
Revenue from Federal Sources					7,865,821.09
Other Financing Sources		2,110,000.00			2,110,000.00
Total From All Sources		\$2,116,436.62			\$87,446,246.53

LEA : 111444602 Mifflin County SD

Printed 12/22/2021 11:33:06 AM

General Fund (10)

	<u>Total</u>
1000 Instruction	
100 Personnel Services – Salaries	
100 Personnel Services – Salaries	21,329,166.44
Total Personnel Services – Salaries	\$21,329,166.44
200 Personnel Services – Employee Benefits	
210 Group Insurance – Contracted Provider	6,733,260.88
220 Social Security Contributions	1,592,862.39
230 PSERS Retirement Contributions	7,333,649.88
250 Unemployment Compensation	80,275.93
260 Workers’ Compensation	106,625.70
291 Other Retirement Plans	161,250.11
Total Personnel Services – Employee Benefits	\$16,007,924.89
300 Purchased Professional and Technical Services	
322 Professional Educational Services – Ius	44,283.09
323 Professional Educational Services – Other Educational Agencies	17,226.56
329 Professional Educational Services – Other	644,791.79
330 Other Professional Services	940.00
Total Purchased Professional and Technical Services	\$707,241.44
400 Purchased Property Services	
430 Repairs and Maintenance Services	121,958.35
440 Rentals	149,733.40
Total Purchased Property Services	\$271,691.75
500 Other Purchased Services	
530 Communications	102,132.65
550 Printing and Binding	9,962.62
561 Tuition To Other School Districts Within the State	1,045,021.94
562 Tuition To Pennsylvania Charter Schools	4,110,996.29
564 Tuition To Career and Technology Centers	1,969,745.00
568 Tuition To Private Residential Rehabilitative Institutions (PRRI) [In-State] and Detention Centers	36,855.15
580 Travel	9,747.41
592 Services Purchased From Another LEA Within the State	933.90
594 IU Payment By Withholding for Institutionalized Children’s Programs – Special Classes	913.43
Total Other Purchased Services	\$7,286,308.39
600 Supplies	
610 General Supplies	706,076.45
640 Books and Periodicals	1,359,703.11
650 Supplies & Fees – Technology Related	17,304.88
Total Supplies	\$2,083,084.44
800 Other Objects	
810 Dues and Fees	1,518.00
Total Other Objects	\$1,518.00
Total 1000 Instruction	\$47,686,935.35

LEA : 111444602 Mifflin County SD

Printed 12/22/2021 11:33:06 AM

General Fund (10)

1100 Regular Programs – Elementary / Secondary

	<u>Elementary</u>	<u>Secondary</u>	<u>Federal</u>	<u>Total</u>
100 Personnel Services – Salaries				
100 Personnel Services – Salaries	6,867,286.55	5,968,396.92	1,855,920.80	14,691,604.27
Total Personnel Services – Salaries	\$6,867,286.55	\$5,968,396.92	\$1,855,920.80	\$14,691,604.27
200 Personnel Services – Employee Benefits				
210 Group Insurance – Contracted Provider	2,120,634.21	1,772,842.82	520,345.59	4,413,822.62
220 Social Security Contributions	489,703.92	470,260.25	137,142.37	1,097,106.54
230 PSERS Retirement Contributions	2,247,689.10	2,530,865.11	319,461.11	5,098,015.32
250 Unemployment Compensation	26,611.40	24,229.70	3,715.19	54,556.29
260 Workers' Compensation	34,329.73	29,842.54	9,287.48	73,459.75
291 Other Retirement Plans	64,969.00	55,291.00		120,260.00
Total Personnel Services – Employee Benefits	\$4,983,937.36	\$4,883,331.42	\$989,951.74	\$10,857,220.52
300 Purchased Professional and Technical Services				
323 Professional Educational Services – Other Educational Agencies		17,226.56		17,226.56
329 Professional Educational Services – Other	138,659.27	206,645.22	87,856.54	433,161.03
Total Purchased Professional and Technical Services	\$138,659.27	\$223,871.78	\$87,856.54	\$450,387.59
400 Purchased Property Services				
430 Repairs and Maintenance Services	34,546.43	31,986.05	28.98	66,561.46
440 Rentals	84,225.21	65,508.19		149,733.40
Total Purchased Property Services	\$118,771.64	\$97,494.24	\$28.98	\$216,294.86
500 Other Purchased Services				
530 Communications	47,740.58	42,323.96	610.00	90,674.54
550 Printing and Binding	3,053.53	6,431.79	477.30	9,962.62
561 Tuition To Other School Districts Within the State		211,832.52		211,832.52
562 Tuition To Pennsylvania Charter Schools		2,687,503.40		2,687,503.40
580 Travel	2,075.22	862.39	558.60	3,496.21
Total Other Purchased Services	\$52,869.33	\$2,948,954.06	\$1,645.90	\$3,003,469.29
600 Supplies				
610 General Supplies	200,033.91	162,971.56	166,095.87	529,101.34
640 Books and Periodicals	234,570.61	221,356.68	8,822.68	464,749.97
650 Supplies & Fees – Technology Related			17,304.88	17,304.88
Total Supplies	\$434,604.52	\$384,328.24	\$192,223.43	\$1,011,156.19
Total 1100 Regular Programs – Elementary / Secondary	\$12,596,128.67	\$14,506,376.66	\$3,127,627.39	\$30,230,132.72

LEA : 111444602 Mifflin County SD

Printed 12/22/2021 11:33:06 AM

General Fund (10)

1110 Regular Programs

	<u>Elementary</u>	<u>Secondary</u>	<u>Federal</u>	<u>Total</u>
100 Personnel Services – Salaries				
100 Personnel Services – Salaries	6,867,286.55	5,968,396.92	483,106.85	13,318,790.32
Total Personnel Services – Salaries	\$6,867,286.55	\$5,968,396.92	\$483,106.85	\$13,318,790.32
200 Personnel Services – Employee Benefits				
210 Group Insurance – Contracted Provider	2,120,634.21	1,772,842.82	57,870.09	3,951,347.12
220 Social Security Contributions	489,703.92	470,260.25	34,723.81	994,687.98
230 PSERS Retirement Contributions	2,247,689.10	2,530,865.11	82,782.87	4,861,337.08
250 Unemployment Compensation	26,611.40	24,229.70	966.57	51,807.67
260 Workers' Compensation	34,329.73	29,842.54	2,415.70	66,587.97
291 Other Retirement Plans	64,969.00	55,291.00		120,260.00
Total Personnel Services – Employee Benefits	\$4,983,937.36	\$4,883,331.42	\$178,759.04	\$10,046,027.82
300 Purchased Professional and Technical Services				
323 Professional Educational Services – Other Educational Agencies		17,226.56		17,226.56
329 Professional Educational Services – Other	138,659.27	206,645.22	8,850.00	354,154.49
Total Purchased Professional and Technical Services	\$138,659.27	\$223,871.78	\$8,850.00	\$371,381.05
400 Purchased Property Services				
430 Repairs and Maintenance Services	34,546.43	31,986.05	28.98	66,561.46
440 Rentals	84,225.21	65,508.19		149,733.40
Total Purchased Property Services	\$118,771.64	\$97,494.24	\$28.98	\$216,294.86
500 Other Purchased Services				
530 Communications	47,740.58	42,323.96	610.00	90,674.54
550 Printing and Binding	3,053.53	6,431.79	477.30	9,962.62
561 Tuition To Other School Districts Within the State		211,832.52		211,832.52
562 Tuition To Pennsylvania Charter Schools		2,687,503.40		2,687,503.40
580 Travel	2,075.22	862.39	558.60	3,496.21
Total Other Purchased Services	\$52,869.33	\$2,948,954.06	\$1,645.90	\$3,003,469.29
600 Supplies				
610 General Supplies	200,033.91	162,971.56	121,881.62	484,887.09
640 Books and Periodicals	234,570.61	221,356.68	8,822.68	464,749.97
650 Supplies & Fees – Technology Related			17,304.88	17,304.88
Total Supplies	\$434,604.52	\$384,328.24	\$148,009.18	\$966,941.94
Total 1110 Regular Programs	\$12,596,128.67	\$14,506,376.66	\$820,399.95	\$27,922,905.28

General Fund (10)

1190 Federally-Funded Regular Programs

100 Personnel Services – Salaries

100 Personnel Services – Salaries

Total Personnel Services – Salaries

200 Personnel Services – Employee Benefits

210 Group Insurance – Contracted Provider

220 Social Security Contributions

230 PSERS Retirement Contributions

250 Unemployment Compensation

260 Workers' Compensation

Total Personnel Services – Employee Benefits

300 Purchased Professional and Technical Services

329 Professional Educational Services – Other

Total Purchased Professional and Technical Services

600 Supplies

610 General Supplies

Total Supplies

Total 1190 Federally-Funded Regular Programs

	<u>Elementary</u>	<u>Secondary</u>	<u>Federal</u>	<u>Total</u>
			1,372,813.95	1,372,813.95
			\$1,372,813.95	\$1,372,813.95
			462,475.50	462,475.50
			102,418.56	102,418.56
			236,678.24	236,678.24
			2,748.62	2,748.62
			6,871.78	6,871.78
			\$811,192.70	\$811,192.70
			79,006.54	79,006.54
			\$79,006.54	\$79,006.54
			44,214.25	44,214.25
			\$44,214.25	\$44,214.25
			\$2,307,227.44	\$2,307,227.44

LEA : 111444602 Mifflin County SD

Printed 12/22/2021 11:33:06 AM

General Fund (10)

	<u>Elementary</u>	<u>Secondary</u>	<u>Federal</u>	<u>Total</u>
1200 Special Programs – Elementary / Secondary				
100 Personnel Services – Salaries				
100 Personnel Services – Salaries	2,674,218.08	1,909,639.17	543,250.50	5,127,107.75
Total Personnel Services – Salaries	\$2,674,218.08	\$1,909,639.17	\$543,250.50	\$5,127,107.75
200 Personnel Services – Employee Benefits				
210 Group Insurance – Contracted Provider	868,216.83	693,991.71	294,191.85	1,856,400.39
220 Social Security Contributions	200,518.98	137,290.00	45,336.49	383,145.47
230 PSERS Retirement Contributions	906,665.95	730,710.62	90,182.51	1,727,559.08
250 Unemployment Compensation	10,852.28	7,759.36	1,086.51	19,698.15
260 Workers' Compensation	13,353.73	9,544.25	2,715.99	25,613.97
291 Other Retirement Plans	3,949.26	3,695.85		7,645.11
Total Personnel Services – Employee Benefits	\$2,003,557.03	\$1,582,991.79	\$433,513.35	\$4,020,062.17
300 Purchased Professional and Technical Services				
322 Professional Educational Services – Ius	23,227.09		21,056.00	44,283.09
329 Professional Educational Services – Other	93,102.33	64,215.89	3,722.35	161,040.57
330 Other Professional Services			940.00	940.00
Total Purchased Professional and Technical Services	\$116,329.42	\$64,215.89	\$25,718.35	\$206,263.66
400 Purchased Property Services				
430 Repairs and Maintenance Services		178.99		178.99
Total Purchased Property Services		\$178.99		\$178.99
500 Other Purchased Services				
530 Communications		2,135.24	9,301.87	11,437.11
561 Tuition To Other School Districts Within the State		833,189.42		833,189.42
562 Tuition To Pennsylvania Charter Schools		1,423,492.89		1,423,492.89
568 Tuition To Private Residential Rehabilitative Institutions (PRRI) [In-State] and Detention Centers	16,247.22			16,247.22
580 Travel	1,365.86	2,833.01		4,198.87
594 IU Payment By Withholding for Institutionalized Children's Programs – Special Classes		913.43		913.43
Total Other Purchased Services	\$17,613.08	\$2,262,563.99	\$9,301.87	\$2,289,478.94
600 Supplies				
610 General Supplies	31,508.72	20,740.18	52,807.11	105,056.01
Total Supplies	\$31,508.72	\$20,740.18	\$52,807.11	\$105,056.01
800 Other Objects				
810 Dues and Fees	1,265.00	253.00		1,518.00
Total Other Objects	\$1,265.00	\$253.00		\$1,518.00
Total 1200 Special Programs – Elementary / Secondary	\$4,844,491.33	\$5,840,583.01	\$1,064,591.18	\$11,749,665.52

LEA : 111444602 Mifflin County SD

Printed 12/22/2021 11:33:06 AM

General Fund (10)

1210 Life Skills Support

	<u>Elementary</u>	<u>Secondary</u>	<u>Federal</u>	<u>Total</u>
100 Personnel Services – Salaries				
100 Personnel Services – Salaries	317,414.70	492,204.98		809,619.68
Total Personnel Services – Salaries	\$317,414.70	\$492,204.98		\$809,619.68
200 Personnel Services – Employee Benefits				
210 Group Insurance – Contracted Provider	148,702.79	280,948.44		429,651.23
220 Social Security Contributions	23,443.18	36,609.02		60,052.20
230 PSERS Retirement Contributions	108,041.24	166,944.09		274,985.33
250 Unemployment Compensation	1,288.03	2,007.55		3,295.58
260 Workers' Compensation	1,570.43	2,456.75		4,027.18
291 Other Retirement Plans	3,605.91			3,605.91
Total Personnel Services – Employee Benefits	\$286,651.58	\$488,965.85		\$775,617.43
300 Purchased Professional and Technical Services				
329 Professional Educational Services – Other	7,239.86	4,666.71		11,906.57
Total Purchased Professional and Technical Services	\$7,239.86	\$4,666.71		\$11,906.57
500 Other Purchased Services				
580 Travel		643.44		643.44
Total Other Purchased Services		\$643.44		\$643.44
600 Supplies				
610 General Supplies	2,240.79	7,633.34	3,332.40	13,206.53
Total Supplies	\$2,240.79	\$7,633.34	\$3,332.40	\$13,206.53
Total 1210 Life Skills Support	\$613,546.93	\$994,114.32	\$3,332.40	\$1,610,993.65

LEA : 111444602 Mifflin County SD

Printed 12/22/2021 11:33:06 AM

General Fund (10)

1220 Sensory Support

	<u>Elementary</u>	<u>Secondary</u>	<u>Federal</u>	<u>Total</u>
100 Personnel Services – Salaries				
100 Personnel Services – Salaries	410,191.23	98,552.10		508,743.33
Total Personnel Services – Salaries	\$410,191.23	\$98,552.10		\$508,743.33
200 Personnel Services – Employee Benefits				
210 Group Insurance – Contracted Provider	96,401.25	25,722.23		122,123.48
220 Social Security Contributions	30,847.64	7,368.52		38,216.16
230 PSERS Retirement Contributions	139,091.04	32,984.01		172,075.05
250 Unemployment Compensation	1,664.57	399.47		2,064.04
260 Workers' Compensation	2,050.64	492.80		2,543.44
Total Personnel Services – Employee Benefits	\$270,055.14	\$66,967.03		\$337,022.17
400 Purchased Property Services				
430 Repairs and Maintenance Services		178.99		178.99
Total Purchased Property Services		\$178.99		\$178.99
500 Other Purchased Services				
580 Travel	266.90	266.90		533.80
Total Other Purchased Services	\$266.90	\$266.90		\$533.80
600 Supplies				
610 General Supplies	5,013.62	3,544.11	32,989.56	41,547.29
Total Supplies	\$5,013.62	\$3,544.11	\$32,989.56	\$41,547.29
800 Other Objects				
810 Dues and Fees	1,265.00	253.00		1,518.00
Total Other Objects	\$1,265.00	\$253.00		\$1,518.00
Total 1220 Sensory Support	\$686,791.89	\$169,762.13	\$32,989.56	\$889,543.58

LEA : 111444602 Mifflin County SD

Printed 12/22/2021 11:33:06 AM

General Fund (10)

1230 Emotional Support

	<u>Elementary</u>	<u>Secondary</u>	<u>Federal</u>	<u>Total</u>
100 Personnel Services – Salaries				
100 Personnel Services – Salaries	833,843.29	277,288.91	68,200.00	1,179,332.20
Total Personnel Services – Salaries	\$833,843.29	\$277,288.91	\$68,200.00	\$1,179,332.20
200 Personnel Services – Employee Benefits				
210 Group Insurance – Contracted Provider	318,246.14	85,657.97	833.04	404,737.15
220 Social Security Contributions	62,622.96	20,709.30	5,217.20	88,549.46
230 PSERS Retirement Contributions	277,494.55	106,680.47	11,767.88	395,942.90
250 Unemployment Compensation	3,384.54	1,125.51	136.48	4,646.53
260 Workers' Compensation	4,168.85	1,386.34	341.09	5,896.28
291 Other Retirement Plans		3,052.50		3,052.50
Total Personnel Services – Employee Benefits	\$665,917.04	\$218,612.09	\$18,295.69	\$902,824.82
300 Purchased Professional and Technical Services				
329 Professional Educational Services – Other	17,083.76	2,155.45	1,568.67	20,807.88
330 Other Professional Services			940.00	940.00
Total Purchased Professional and Technical Services	\$17,083.76	\$2,155.45	\$2,508.67	\$21,747.88
500 Other Purchased Services				
561 Tuition To Other School Districts Within the State		105,245.64		105,245.64
580 Travel		1,506.86		1,506.86
Total Other Purchased Services		\$106,752.50		\$106,752.50
600 Supplies				
610 General Supplies	16,234.41	4,094.56	3,329.08	23,658.05
Total Supplies	\$16,234.41	\$4,094.56	\$3,329.08	\$23,658.05
Total 1230 Emotional Support	\$1,533,078.50	\$608,903.51	\$92,333.44	\$2,234,315.45

LEA : 111444602 Mifflin County SD

Printed 12/22/2021 11:33:06 AM

General Fund (10)

1240 Academic Support

	<u>Elementary</u>	<u>Secondary</u>	<u>Federal</u>	<u>Total</u>
100 Personnel Services – Salaries				
100 Personnel Services – Salaries	1,030,245.78	1,010,393.10	475,050.50	2,515,689.38
Total Personnel Services – Salaries	\$1,030,245.78	\$1,010,393.10	\$475,050.50	\$2,515,689.38
200 Personnel Services – Employee Benefits				
210 Group Insurance – Contracted Provider	279,049.42	301,620.47	293,358.81	874,028.70
220 Social Security Contributions	77,368.17	70,218.18	40,119.29	187,705.64
230 PSERS Retirement Contributions	354,724.52	413,334.83	78,414.63	846,473.98
250 Unemployment Compensation	4,180.66	4,099.98	950.03	9,230.67
260 Workers' Compensation	5,151.18	5,052.36	2,374.90	12,578.44
291 Other Retirement Plans	343.35	643.35		986.70
Total Personnel Services – Employee Benefits	\$720,817.30	\$794,969.17	\$415,217.66	\$1,931,004.13
300 Purchased Professional and Technical Services				
329 Professional Educational Services – Other	33,656.71	22,271.73	2,153.68	58,082.12
Total Purchased Professional and Technical Services	\$33,656.71	\$22,271.73	\$2,153.68	\$58,082.12
500 Other Purchased Services				
530 Communications		2,135.24	9,301.87	11,437.11
561 Tuition To Other School Districts Within the State		727,943.78		727,943.78
562 Tuition To Pennsylvania Charter Schools		1,423,492.89		1,423,492.89
580 Travel	352.31	326.15		678.46
Total Other Purchased Services	\$352.31	\$2,153,898.06	\$9,301.87	\$2,163,552.24
600 Supplies				
610 General Supplies	7,459.69	4,165.55	13,156.07	24,781.31
Total Supplies	\$7,459.69	\$4,165.55	\$13,156.07	\$24,781.31
Total 1240 Academic Support	\$1,792,531.79	\$3,985,697.61	\$914,879.78	\$6,693,109.18

General Fund (10)

	<u>Elementary</u>	<u>Secondary</u>	<u>Federal</u>	<u>Total</u>
1241 Learning Support – Public				
100 Personnel Services – Salaries				
100 Personnel Services – Salaries	988,740.08	993,848.80	475,050.50	2,457,639.38
Total Personnel Services – Salaries	\$988,740.08	\$993,848.80	\$475,050.50	\$2,457,639.38
200 Personnel Services – Employee Benefits				
210 Group Insurance – Contracted Provider	272,577.12	299,040.49	293,358.81	864,976.42
220 Social Security Contributions	74,322.52	69,004.22	40,119.29	183,446.03
230 PSERS Retirement Contributions	340,400.93	407,625.47	78,414.63	826,441.03
250 Unemployment Compensation	4,011.94	4,032.96	950.03	8,994.93
260 Workers' Compensation	4,943.58	4,969.59	2,374.90	12,288.07
291 Other Retirement Plans	343.35	643.35		986.70
Total Personnel Services – Employee Benefits	\$696,599.44	\$785,316.08	\$415,217.66	\$1,897,133.18
300 Purchased Professional and Technical Services				
329 Professional Educational Services – Other	33,656.71	22,271.73	2,153.68	58,082.12
Total Purchased Professional and Technical Services	\$33,656.71	\$22,271.73	\$2,153.68	\$58,082.12
500 Other Purchased Services				
530 Communications		2,135.24	9,301.87	11,437.11
561 Tuition To Other School Districts Within the State		727,943.78		727,943.78
562 Tuition To Pennsylvania Charter Schools		1,423,492.89		1,423,492.89
580 Travel		185.72		185.72
Total Other Purchased Services		\$2,153,757.63	\$9,301.87	\$2,163,059.50
600 Supplies				
610 General Supplies	7,172.19	3,592.21	13,156.07	23,920.47
Total Supplies	\$7,172.19	\$3,592.21	\$13,156.07	\$23,920.47
Total 1241 Learning Support – Public	\$1,726,168.42	\$3,958,786.45	\$914,879.78	\$6,599,834.65

General Fund (10)

	<u>Elementary</u>	<u>Secondary</u>	<u>Federal</u>	<u>Total</u>
1243 Gifted Support				
100 Personnel Services – Salaries				
100 Personnel Services – Salaries	41,505.70	16,544.30		58,050.00
Total Personnel Services – Salaries	\$41,505.70	\$16,544.30		\$58,050.00
200 Personnel Services – Employee Benefits				
210 Group Insurance – Contracted Provider	6,472.30	2,579.98		9,052.28
220 Social Security Contributions	3,045.65	1,213.96		4,259.61
230 PSERS Retirement Contributions	14,323.59	5,709.36		20,032.95
250 Unemployment Compensation	168.72	67.02		235.74
260 Workers' Compensation	207.60	82.77		290.37
Total Personnel Services – Employee Benefits	\$24,217.86	\$9,653.09		\$33,870.95
500 Other Purchased Services				
580 Travel	352.31	140.43		492.74
Total Other Purchased Services	\$352.31	\$140.43		\$492.74
600 Supplies				
610 General Supplies	287.50	573.34		860.84
Total Supplies	\$287.50	\$573.34		\$860.84
Total 1243 Gifted Support	\$66,363.37	\$26,911.16		\$93,274.53

General Fund (10)

1260 Physical Support

	<u>Elementary</u>	<u>Secondary</u>	<u>Federal</u>	<u>Total</u>
100 Personnel Services – Salaries				
100 Personnel Services – Salaries	82,523.08	31,200.08		113,723.16
Total Personnel Services – Salaries	\$82,523.08	\$31,200.08		\$113,723.16
200 Personnel Services – Employee Benefits				
210 Group Insurance – Contracted Provider	25,817.23	42.60		25,859.83
220 Social Security Contributions	6,237.03	2,384.98		8,622.01
230 PSERS Retirement Contributions	27,314.60	10,767.22		38,081.82
250 Unemployment Compensation	334.48	126.85		461.33
260 Workers' Compensation	412.63	156.00		568.63
Total Personnel Services – Employee Benefits	\$60,115.97	\$13,477.65		\$73,593.62
300 Purchased Professional and Technical Services				
329 Professional Educational Services – Other	35,122.00	35,122.00		70,244.00
Total Purchased Professional and Technical Services	\$35,122.00	\$35,122.00		\$70,244.00
500 Other Purchased Services				
580 Travel	746.65	89.66		836.31
Total Other Purchased Services	\$746.65	\$89.66		\$836.31
600 Supplies				
610 General Supplies	560.21	1,302.62		1,862.83
Total Supplies	\$560.21	\$1,302.62		\$1,862.83
Total 1260 Physical Support	\$179,067.91	\$81,192.01		\$260,259.92

General Fund (10)

1290 Special Programs - Other Support

300 Purchased Professional and Technical Services

322 Professional Educational Services – Ius

Elementary

Secondary

Federal

Total

23,227.09

21,056.00

44,283.09

Total Purchased Professional and Technical Services

\$23,227.09

\$21,056.00

\$44,283.09

500 Other Purchased Services

568 Tuition To Private Residential Rehabilitative Institutions (PRRI) [In-State] and Detention Centers

594 IU Payment By Withholding for Institutionalized Children’s Programs – Special Classes

16,247.22

913.43

16,247.22

913.43

Total Other Purchased Services

\$16,247.22

\$913.43

\$17,160.65

Total 1290 Special Programs - Other Support

\$39,474.31

\$913.43

\$21,056.00

\$61,443.74

General Fund (10)

1300 Vocational Education

	<u>Elementary</u>	<u>Secondary</u>	<u>Federal</u>	<u>Total</u>
100 Personnel Services – Salaries				
100 Personnel Services – Salaries		927,430.42		927,430.42
Total Personnel Services – Salaries		\$927,430.42		\$927,430.42
200 Personnel Services – Employee Benefits				
210 Group Insurance – Contracted Provider		320,296.74		320,296.74
220 Social Security Contributions		68,974.49		68,974.49
230 PSERS Retirement Contributions		318,689.02		318,689.02
250 Unemployment Compensation		3,764.61		3,764.61
260 Workers' Compensation		4,636.83		4,636.83
291 Other Retirement Plans		32,695.00		32,695.00
Total Personnel Services – Employee Benefits		\$749,056.69		\$749,056.69
300 Purchased Professional and Technical Services				
329 Professional Educational Services – Other		8,277.07		8,277.07
Total Purchased Professional and Technical Services		\$8,277.07		\$8,277.07
400 Purchased Property Services				
430 Repairs and Maintenance Services		904.90		904.90
Total Purchased Property Services		\$904.90		\$904.90
500 Other Purchased Services				
564 Tuition To Career and Technology Centers		1,969,745.00		1,969,745.00
Total Other Purchased Services		\$1,969,745.00		\$1,969,745.00
600 Supplies				
610 General Supplies		40,693.72		40,693.72
Total Supplies		\$40,693.72		\$40,693.72
Total 1300 Vocational Education		\$3,696,107.80		\$3,696,107.80

LEA : 111444602 Mifflin County SD

Printed 12/22/2021 11:33:06 AM

General Fund (10)

	<u>Elementary</u>	<u>Secondary</u>	<u>Federal</u>	<u>Total</u>
1400 Other Instructional Programs – Elementary / Secondary				
100 Personnel Services – Salaries				
100 Personnel Services – Salaries	231,962.57	298,011.43		529,974.00
Total Personnel Services – Salaries	\$231,962.57	\$298,011.43		\$529,974.00
200 Personnel Services – Employee Benefits				
210 Group Insurance – Contracted Provider	43,317.68	73,721.92		117,039.60
220 Social Security Contributions	17,463.35	22,248.05		39,711.40
230 PSERS Retirement Contributions	78,825.77	101,406.90		180,232.67
250 Unemployment Compensation	941.62	1,209.18		2,150.80
260 Workers' Compensation	1,159.70	1,490.25		2,649.95
291 Other Retirement Plans		650.00		650.00
Total Personnel Services – Employee Benefits	\$141,708.12	\$200,726.30		\$342,434.42
300 Purchased Professional and Technical Services				
329 Professional Educational Services – Other	3,504.47	33,275.70	5,532.95	42,313.12
Total Purchased Professional and Technical Services	\$3,504.47	\$33,275.70	\$5,532.95	\$42,313.12
400 Purchased Property Services				
430 Repairs and Maintenance Services		54,313.00		54,313.00
Total Purchased Property Services		\$54,313.00		\$54,313.00
500 Other Purchased Services				
530 Communications		21.00		21.00
568 Tuition To Private Residential Rehabilitative Institutions (PRRI) [In-State] and Detention Centers		20,607.93		20,607.93
580 Travel	100.80	92.74		193.54
Total Other Purchased Services	\$100.80	\$20,721.67		\$20,822.47
600 Supplies				
610 General Supplies		10,903.63		10,903.63
640 Books and Periodicals	579,564.00	315,389.14		894,953.14
Total Supplies	\$579,564.00	\$326,292.77		\$905,856.77
Total 1400 Other Instructional Programs – Elementary / Secondary	\$956,839.96	\$933,340.87	\$5,532.95	\$1,895,713.78

General Fund (10)

	<u>Elementary</u>	<u>Secondary</u>	<u>Federal</u>	<u>Total</u>
1430 Homebound Instruction				
100 Personnel Services – Salaries				
100 Personnel Services – Salaries	70.00	2,665.50		2,735.50
Total Personnel Services – Salaries	\$70.00	\$2,665.50		\$2,735.50
200 Personnel Services – Employee Benefits				
220 Social Security Contributions	5.36	195.80		201.16
230 PSERS Retirement Contributions	24.16	919.85		944.01
250 Unemployment Compensation	0.27	10.83		11.10
260 Workers' Compensation	0.35	13.31		13.66
Total Personnel Services – Employee Benefits	\$30.14	\$1,139.79		\$1,169.93
Total 1430 Homebound Instruction	\$100.14	\$3,805.29		\$3,905.43

LEA : 111444602 Mifflin County SD

Printed 12/22/2021 11:33:06 AM

General Fund (10)

	<u>Elementary</u>	<u>Secondary</u>	<u>Federal</u>	<u>Total</u>
1440 Alternative Regular Education Programs				
100 Personnel Services – Salaries				
100 Personnel Services – Salaries	231,892.57	295,345.93		527,238.50
Total Personnel Services – Salaries	\$231,892.57	\$295,345.93		\$527,238.50
200 Personnel Services – Employee Benefits				
210 Group Insurance – Contracted Provider	43,317.68	73,721.92		117,039.60
220 Social Security Contributions	17,457.99	22,052.25		39,510.24
230 PSERS Retirement Contributions	78,801.61	100,487.05		179,288.66
250 Unemployment Compensation	941.35	1,198.35		2,139.70
260 Workers' Compensation	1,159.35	1,476.94		2,636.29
291 Other Retirement Plans		650.00		650.00
Total Personnel Services – Employee Benefits	\$141,677.98	\$199,586.51		\$341,264.49
300 Purchased Professional and Technical Services				
329 Professional Educational Services – Other	3,504.47	33,275.70	5,532.95	42,313.12
Total Purchased Professional and Technical Services	\$3,504.47	\$33,275.70	\$5,532.95	\$42,313.12
400 Purchased Property Services				
430 Repairs and Maintenance Services		54,313.00		54,313.00
Total Purchased Property Services		\$54,313.00		\$54,313.00
500 Other Purchased Services				
530 Communications		21.00		21.00
568 Tuition To Private Residential Rehabilitative Institutions (PRRI) [In-State] and Detention Centers		20,607.93		20,607.93
580 Travel	100.80	92.74		193.54
Total Other Purchased Services	\$100.80	\$20,721.67		\$20,822.47
600 Supplies				
610 General Supplies		10,903.63		10,903.63
640 Books and Periodicals	579,564.00	315,389.14		894,953.14
Total Supplies	\$579,564.00	\$326,292.77		\$905,856.77
Total 1440 Alternative Regular Education Programs	\$956,739.82	\$929,535.58	\$5,532.95	\$1,891,808.35

General Fund (10)

1441 Adjudicated / Court-Placed Programs

100 Personnel Services – Salaries

100 Personnel Services – Salaries

Total Personnel Services – Salaries

200 Personnel Services – Employee Benefits

220 Social Security Contributions

230 PSERS Retirement Contributions

250 Unemployment Compensation

260 Workers' Compensation

Total Personnel Services – Employee Benefits

500 Other Purchased Services

568 Tuition To Private Residential Rehabilitative Institutions (PRRI) [In-State] and Detention Centers

Total Other Purchased Services

Total 1441 Adjudicated / Court-Placed Programs

	<u>Elementary</u>	<u>Secondary</u>	<u>Federal</u>	<u>Total</u>
		773.00		773.00
		\$773.00		\$773.00
		57.90		57.90
		266.76		266.76
		3.12		3.12
		3.87		3.87
		\$331.65		\$331.65
		20,607.93		20,607.93
		\$20,607.93		\$20,607.93
		\$21,712.58		\$21,712.58

LEA : 111444602 Mifflin County SD

Printed 12/22/2021 11:33:06 AM

General Fund (10)

	<u>Elementary</u>	<u>Secondary</u>	<u>Federal</u>	<u>Total</u>
1442 Alternative Education Programs				
100 Personnel Services – Salaries				
100 Personnel Services – Salaries	231,892.57	294,572.93		526,465.50
Total Personnel Services – Salaries	\$231,892.57	\$294,572.93		\$526,465.50
200 Personnel Services – Employee Benefits				
210 Group Insurance – Contracted Provider	43,317.68	73,721.92		117,039.60
220 Social Security Contributions	17,457.99	21,994.35		39,452.34
230 PSERS Retirement Contributions	78,801.61	100,220.29		179,021.90
250 Unemployment Compensation	941.35	1,195.23		2,136.58
260 Workers' Compensation	1,159.35	1,473.07		2,632.42
291 Other Retirement Plans		650.00		650.00
Total Personnel Services – Employee Benefits	\$141,677.98	\$199,254.86		\$340,932.84
300 Purchased Professional and Technical Services				
329 Professional Educational Services – Other	3,504.47	33,275.70	5,532.95	42,313.12
Total Purchased Professional and Technical Services	\$3,504.47	\$33,275.70	\$5,532.95	\$42,313.12
400 Purchased Property Services				
430 Repairs and Maintenance Services		54,313.00		54,313.00
Total Purchased Property Services		\$54,313.00		\$54,313.00
500 Other Purchased Services				
530 Communications		21.00		21.00
580 Travel	100.80	92.74		193.54
Total Other Purchased Services	\$100.80	\$113.74		\$214.54
600 Supplies				
610 General Supplies		10,903.63		10,903.63
640 Books and Periodicals	579,564.00	315,389.14		894,953.14
Total Supplies	\$579,564.00	\$326,292.77		\$905,856.77
Total 1442 Alternative Education Programs	\$956,739.82	\$907,823.00	\$5,532.95	\$1,870,095.77

LEA : 111444602 Mifflin County SD

Printed 12/22/2021 11:33:06 AM

General Fund (10)

1500 Nonpublic School Programs

100 Personnel Services – Salaries

100 Personnel Services – Salaries

Total Personnel Services – Salaries

200 Personnel Services – Employee Benefits

210 Group Insurance – Contracted Provider

220 Social Security Contributions

230 PSERS Retirement Contributions

250 Unemployment Compensation

260 Workers' Compensation

Total Personnel Services – Employee Benefits

500 Other Purchased Services

580 Travel

592 Services Purchased From Another LEA Within the State

Total Other Purchased Services

600 Supplies

610 General Supplies

Total Supplies

Total 1500 Nonpublic School Programs

	<u>Elementary</u>	<u>Secondary</u>	<u>Federal</u>	<u>Total</u>
			53,050.00	53,050.00
			\$53,050.00	\$53,050.00
			25,701.53	25,701.53
			3,924.49	3,924.49
			9,153.79	9,153.79
			106.08	106.08
			265.20	265.20
			\$39,151.09	\$39,151.09
			1,858.79	1,858.79
			933.90	933.90
			\$2,792.69	\$2,792.69
			20,321.75	20,321.75
			\$20,321.75	\$20,321.75
			\$115,315.53	\$115,315.53

LEA : 111444602 Mifflin County SD

Printed 12/22/2021 11:33:20 AM

General Fund (10)

2000 Support Services

Total

100 Personnel Services – Salaries

100 Personnel Services – Salaries 7,637,325.68

Total Personnel Services – Salaries

\$7,637,325.68

200 Personnel Services – Employee Benefits

210 Group Insurance – Contracted Provider 2,284,102.40

220 Social Security Contributions 573,294.93

230 PSERS Retirement Contributions 2,537,189.27

240 Tuition Reimbursement 256,707.30

250 Unemployment Compensation 29,790.52

260 Workers' Compensation 38,178.46

291 Other Retirement Plans 80,453.48

Total Personnel Services – Employee Benefits

\$5,799,716.36

300 Purchased Professional and Technical Services

310 Official / Administrative Services 212,624.65

329 Professional Educational Services – Other 157,794.50

330 Other Professional Services 192,404.96

340 Technical Services 102,244.68

350 Security / Safety Services 122,638.87

360 Employee Training and Development Services 43,139.91

390 Other Purchased Professional and Technical Services 1,998.75

Total Purchased Professional and Technical Services

\$832,846.32

400 Purchased Property Services

410 Cleaning Services 83,608.42

420 Utility Services 106,013.92

430 Repairs and Maintenance Services 645,288.68

440 Rentals 49,700.39

450 Construction Services 429,519.00

Total Purchased Property Services

\$1,314,130.41

500 Other Purchased Services

511 Student Transportation Services from Another LEA Within the State 22,815.54

513 Contracted Carriers 4,451,435.49

516 Student Transportation Services From the IU 63,548.27

519 Student Transportation Services From Other Sources 11,871.78

520 Insurance – General 1,050.00

523 General Property and Liability Insurance 223,775.00

529 Other Insurance 36,835.00

530 Communications 58,688.54

541 Advertising Related to Federal Grant Awards 22,570.47

580 Travel 10,658.18

Total Other Purchased Services

\$4,903,248.27

600 Supplies

610 General Supplies 654,351.92

620 Energy 798,286.48

640 Books and Periodicals 88,839.28

LEA : 111444602 Mifflin County SD

Printed 12/22/2021 11:33:20 AM

General Fund (10)

2000 Support Services

Total

600 Supplies

650 Supplies & Fees – Technology Related

2,332,808.59

Total Supplies

\$3,874,286.27

700 Property

752 Capital Equipment – Original and Additional

62,301.11

756 Capitalized Technology Equipment – Original

23,287.36

762 Capitalized Equipment - Replacement

152,337.51

766 Capitalized Technology Equipment – Replacement

527,078.72

Total Property

\$765,004.70

800 Other Objects

810 Dues and Fees

39,346.29

820 Claims and Judgments Against the LEA

13,379.41

Total Other Objects

\$52,725.70

Total 2000 Support Services

\$25,179,283.71

LEA : 111444602 Mifflin County SD

Printed 12/22/2021 11:33:20 AM

General Fund (10)

2100 Support Services – Students

100 Personnel Services – Salaries

	<u>Elementary</u>	<u>Secondary</u>	<u>Federal</u>	<u>Total</u>
100 Personnel Services – Salaries	452,476.86	519,682.72	185,754.12	1,211,517.40
Total Personnel Services – Salaries	\$452,476.86	\$519,682.72	\$185,754.12	\$1,211,517.40

200 Personnel Services – Employee Benefits

210 Group Insurance – Contracted Provider	93,969.64	163,394.92	55,659.54	336,524.59
220 Social Security Contributions	34,164.91	39,131.33	13,473.87	90,661.96
230 PSERS Retirement Contributions	154,403.75	184,618.25	32,051.76	389,572.41
250 Unemployment Compensation	1,835.83	2,108.56	371.56	4,423.08
260 Workers' Compensation	2,262.55	2,598.43	928.61	6,057.65
Total Personnel Services – Employee Benefits	\$286,636.68	\$391,851.49	\$102,485.34	\$827,239.69

300 Purchased Professional and Technical Services

329 Professional Educational Services – Other	19,430.18	91,030.44	14,584.60	125,045.22
Total Purchased Professional and Technical Services	\$19,430.18	\$91,030.44	\$14,584.60	\$125,045.22

500 Other Purchased Services

530 Communications			588.99	988.93
580 Travel	143.94	12.41	1,635.10	2,164.33
Total Other Purchased Services	\$143.94	\$12.41	\$2,224.09	\$3,153.26

600 Supplies

610 General Supplies	2,985.32	5,697.30	2,967.29	12,279.85
650 Supplies & Fees – Technology Related	6,412.71	2,467.29		8,880.00
Total Supplies	\$9,398.03	\$8,164.59	\$2,967.29	\$21,159.85

Total 2100 Support Services – Students

Total 2100 Support Services – Students	\$768,085.69	\$1,010,741.65	\$308,015.44	\$2,188,115.42
---	---------------------	-----------------------	---------------------	-----------------------

General Fund (10)

	<u>Elementary</u>	<u>Secondary</u>	<u>Federal</u>	<u>Total</u>
2120 Guidance Services				
100 Personnel Services – Salaries				
100 Personnel Services – Salaries	231,955.74	442,319.19	138,361.15	812,636.08
Total Personnel Services – Salaries	\$231,955.74	\$442,319.19	\$138,361.15	\$812,636.08
200 Personnel Services – Employee Benefits				
210 Group Insurance – Contracted Provider	72,946.20	147,956.71	32,159.25	253,062.16
220 Social Security Contributions	17,395.43	33,485.92	9,925.70	60,807.05
230 PSERS Retirement Contributions	79,465.77	157,920.15	23,874.13	261,260.05
250 Unemployment Compensation	941.19	1,794.52	276.69	3,012.40
260 Workers' Compensation	1,159.88	2,211.68	691.78	4,063.34
Total Personnel Services – Employee Benefits	\$171,908.47	\$343,368.98	\$66,927.55	\$582,205.00
300 Purchased Professional and Technical Services				
329 Professional Educational Services – Other		10,646.62		10,646.62
Total Purchased Professional and Technical Services		\$10,646.62		\$10,646.62
600 Supplies				
610 General Supplies	189.10	2,022.58	2,967.29	5,178.97
Total Supplies	\$189.10	\$2,022.58	\$2,967.29	\$5,178.97
Total 2120 Guidance Services	\$404,053.31	\$798,357.37	\$208,255.99	\$1,410,666.67

General Fund (10)

	<u>Elementary</u>	<u>Secondary</u>	<u>Federal</u>	<u>Total</u>
2140 Psychological Services				
100 Personnel Services – Salaries				
100 Personnel Services – Salaries	220,521.12	77,363.53		297,884.65
Total Personnel Services – Salaries	\$220,521.12	\$77,363.53		\$297,884.65
200 Personnel Services – Employee Benefits				
210 Group Insurance – Contracted Provider	21,023.44	15,438.21		36,461.65
220 Social Security Contributions	16,769.48	5,645.41		22,414.89
230 PSERS Retirement Contributions	74,937.98	26,698.10		101,636.08
250 Unemployment Compensation	894.64	314.04		1,208.68
260 Workers' Compensation	1,102.67	386.75		1,489.42
Total Personnel Services – Employee Benefits	\$114,728.21	\$48,482.51		\$163,210.72
300 Purchased Professional and Technical Services				
329 Professional Educational Services – Other	6,557.26	77,177.72		83,734.98
Total Purchased Professional and Technical Services	\$6,557.26	\$77,177.72		\$83,734.98
500 Other Purchased Services				
580 Travel	143.94	12.41		156.35
Total Other Purchased Services	\$143.94	\$12.41		\$156.35
600 Supplies				
610 General Supplies	2,796.22	3,674.72		6,470.94
Total Supplies	\$2,796.22	\$3,674.72		\$6,470.94
Total 2140 Psychological Services	\$344,746.75	\$206,710.89		\$551,457.64

LEA : 111444602 Mifflin County SD

Printed 12/22/2021 11:33:20 AM

General Fund (10)

2160 Social Work Services

100 Personnel Services – Salaries

100 Personnel Services – Salaries

Total Personnel Services – Salaries

200 Personnel Services – Employee Benefits

210 Group Insurance – Contracted Provider

220 Social Security Contributions

230 PSERS Retirement Contributions

250 Unemployment Compensation

260 Workers' Compensation

Total Personnel Services – Employee Benefits

500 Other Purchased Services

530 Communications

580 Travel

Total Other Purchased Services

600 Supplies

610 General Supplies

Total Supplies

Total 2160 Social Work Services

	<u>Elementary</u>	<u>Secondary</u>	<u>Federal</u>	<u>Total</u>
			47,392.97	100,996.67
			\$47,392.97	\$100,996.67
			23,500.29	47,000.78
			3,548.17	7,440.02
			8,177.63	26,676.28
			94.87	202.00
			236.83	504.89
			\$35,557.79	\$81,823.97
			588.99	988.93
			1,635.10	2,007.98
			\$2,224.09	\$2,996.91
				629.94
				\$629.94
			\$85,174.85	\$186,447.49

General Fund (10)

2190 Other Student Services

300 Purchased Professional and Technical Services

329 Professional Educational Services – Other

Total Purchased Professional and Technical Services

600 Supplies

650 Supplies & Fees – Technology Related

Total Supplies

Total 2190 Other Student Services

	<u>Elementary</u>	<u>Secondary</u>	<u>Federal</u>	<u>Total</u>
329 Professional Educational Services – Other	12,872.92	3,206.10	14,584.60	30,663.62
Total Purchased Professional and Technical Services	\$12,872.92	\$3,206.10	\$14,584.60	\$30,663.62
650 Supplies & Fees – Technology Related	6,412.71	2,467.29		8,880.00
Total Supplies	\$6,412.71	\$2,467.29		\$8,880.00
Total 2190 Other Student Services	\$19,285.63	\$5,673.39	\$14,584.60	\$39,543.62

LEA : 111444602 Mifflin County SD

Printed 12/22/2021 11:33:20 AM

General Fund (10)

2200 Support Services – Instructional Staff

	<u>Elementary</u>	<u>Secondary</u>	<u>Federal</u>	<u>Total</u>
100 Personnel Services – Salaries				
100 Personnel Services – Salaries	350,928.31	222,719.56	104,050.80	677,698.67
Total Personnel Services – Salaries	\$350,928.31	\$222,719.56	\$104,050.80	\$677,698.67
200 Personnel Services – Employee Benefits				
210 Group Insurance – Contracted Provider	84,294.40	19,618.81	19,180.15	123,093.36
220 Social Security Contributions	26,482.93	17,895.20	6,901.68	51,279.81
230 PSERS Retirement Contributions	122,386.16	82,821.57	17,953.89	223,161.62
240 Tuition Reimbursement	106,468.50	102,069.80		208,538.30
250 Unemployment Compensation	1,422.26	903.10	207.92	2,533.28
260 Workers' Compensation	1,754.00	1,113.27	519.45	3,386.72
291 Other Retirement Plans	331.50	318.50		650.00
Total Personnel Services – Employee Benefits	\$343,139.75	\$224,740.25	\$44,763.09	\$612,643.09
300 Purchased Professional and Technical Services				
329 Professional Educational Services – Other	6,786.60	2,538.07	467.25	9,791.92
360 Employee Training and Development Services	15,156.76	8,849.15	19,134.00	43,139.91
Total Purchased Professional and Technical Services	\$21,943.36	\$11,387.22	\$19,601.25	\$52,931.83
500 Other Purchased Services				
530 Communications	1,296.72	1,277.46		2,574.18
580 Travel	678.65	1,469.30	2,033.73	4,181.68
Total Other Purchased Services	\$1,975.37	\$2,746.76	\$2,033.73	\$6,755.86
600 Supplies				
610 General Supplies	7,132.55	5,190.24	57,803.26	70,126.05
640 Books and Periodicals	11,170.84	4,161.52	9,863.99	25,196.35
Total Supplies	\$18,303.39	\$9,351.76	\$67,667.25	\$95,322.40
800 Other Objects				
810 Dues and Fees	537.50	537.50		1,075.00
Total Other Objects	\$537.50	\$537.50		\$1,075.00
Total 2200 Support Services – Instructional Staff	\$736,827.68	\$471,483.05	\$238,116.12	\$1,446,426.85

General Fund (10)

	<u>Elementary</u>	<u>Secondary</u>	<u>Federal</u>	<u>Total</u>
2250 School Library Services				
100 Personnel Services – Salaries				
100 Personnel Services – Salaries	233,522.92	112,706.59		346,229.51
Total Personnel Services – Salaries	\$233,522.92	\$112,706.59		\$346,229.51
200 Personnel Services – Employee Benefits				
210 Group Insurance – Contracted Provider	72,611.60	7,936.05		80,547.65
220 Social Security Contributions	17,561.77	8,533.69		26,095.46
230 PSERS Retirement Contributions	80,595.52	38,894.85		119,490.37
250 Unemployment Compensation	947.22	457.33		1,404.55
260 Workers' Compensation	1,167.70	563.53		1,731.23
Total Personnel Services – Employee Benefits	\$172,883.81	\$56,385.45		\$229,269.26
300 Purchased Professional and Technical Services				
329 Professional Educational Services – Other	4,155.35	2,069.32		6,224.67
Total Purchased Professional and Technical Services	\$4,155.35	\$2,069.32		\$6,224.67
600 Supplies				
610 General Supplies	3,544.13	1,943.39	482.55	5,970.07
640 Books and Periodicals	11,170.84	4,161.52	9,363.99	24,696.35
Total Supplies	\$14,714.97	\$6,104.91	\$9,846.54	\$30,666.42
Total 2250 School Library Services	\$425,277.05	\$177,266.27	\$9,846.54	\$612,389.86

General Fund (10)

2260 Instruction and Curriculum Development Services

	<u>Elementary</u>	<u>Secondary</u>	<u>Federal</u>	<u>Total</u>
100 Personnel Services – Salaries				
100 Personnel Services – Salaries	99,631.14	89,708.22	76,515.80	265,855.16
Total Personnel Services – Salaries	\$99,631.14	\$89,708.22	\$76,515.80	\$265,855.16
200 Personnel Services – Employee Benefits				
210 Group Insurance – Contracted Provider	11,682.80	11,682.76	19,180.15	42,545.71
220 Social Security Contributions	7,583.75	6,831.49	5,790.77	20,206.01
230 PSERS Retirement Contributions	35,657.36	32,232.64	13,202.90	81,092.90
250 Unemployment Compensation	403.54	364.02	152.92	920.48
260 Workers' Compensation	497.78	448.64	382.40	1,328.82
291 Other Retirement Plans	331.50	318.50		650.00
Total Personnel Services – Employee Benefits	\$56,156.73	\$51,878.05	\$38,709.14	\$146,743.92
500 Other Purchased Services				
530 Communications	1,296.72	1,277.46		2,574.18
Total Other Purchased Services	\$1,296.72	\$1,277.46		\$2,574.18
600 Supplies				
610 General Supplies	169.49	169.49		338.98
640 Books and Periodicals			500.00	500.00
Total Supplies	\$169.49	\$169.49	\$500.00	\$838.98
800 Other Objects				
810 Dues and Fees	537.50	537.50		1,075.00
Total Other Objects	\$537.50	\$537.50		\$1,075.00
Total 2260 Instruction and Curriculum Development Services	\$157,791.58	\$143,570.72	\$115,724.94	\$417,087.24

LEA : 111444602 Mifflin County SD

Printed 12/22/2021 11:33:20 AM

General Fund (10)

	<u>Elementary</u>	<u>Secondary</u>	<u>Federal</u>	<u>Total</u>
2270 Instructional Staff Professional Development Services				
100 Personnel Services – Salaries				
100 Personnel Services – Salaries	17,774.25	20,304.75	27,535.00	65,614.00
Total Personnel Services – Salaries	\$17,774.25	\$20,304.75	\$27,535.00	\$65,614.00
200 Personnel Services – Employee Benefits				
220 Social Security Contributions	1,337.41	2,530.02	1,110.91	4,978.34
230 PSERS Retirement Contributions	6,133.28	11,694.08	4,750.99	22,578.35
240 Tuition Reimbursement	106,468.50	102,069.80		208,538.30
250 Unemployment Compensation	71.50	81.75	55.00	208.25
260 Workers' Compensation	88.52	101.10	137.05	326.67
Total Personnel Services – Employee Benefits	\$114,099.21	\$116,476.75	\$6,053.95	\$236,629.91
300 Purchased Professional and Technical Services				
329 Professional Educational Services – Other	2,631.25	468.75	467.25	3,567.25
360 Employee Training and Development Services	15,156.76	8,849.15	3,225.00	27,230.91
Total Purchased Professional and Technical Services	\$17,788.01	\$9,317.90	\$3,692.25	\$30,798.16
500 Other Purchased Services				
580 Travel	678.65	1,469.30		2,147.95
Total Other Purchased Services	\$678.65	\$1,469.30		\$2,147.95
600 Supplies				
610 General Supplies	3,418.93	3,077.36		6,496.29
Total Supplies	\$3,418.93	\$3,077.36		\$6,496.29
Total 2270 Instructional Staff Professional Development Services	\$153,759.05	\$150,646.06	\$37,281.20	\$341,686.31

LEA : 111444602 Mifflin County SD

Printed 12/22/2021 11:33:20 AM

General Fund (10)

2280 Nonpublic Support Services

300 Purchased Professional and Technical Services

360 Employee Training and Development Services

Total Purchased Professional and Technical Services

500 Other Purchased Services

580 Travel

Total Other Purchased Services

600 Supplies

610 General Supplies

Total Supplies

Total 2280 Nonpublic Support Services

Elementary

Secondary

Federal

Total

15,909.00

15,909.00

\$15,909.00

\$15,909.00

2,033.73

2,033.73

\$2,033.73

\$2,033.73

57,320.71

57,320.71

\$57,320.71

\$57,320.71

\$75,263.44

\$75,263.44

LEA : 111444602 Mifflin County SD

Printed 12/22/2021 11:33:20 AM

General Fund (10)

2300 Support Services – Administration

	<u>Elementary</u>	<u>Secondary</u>	<u>Federal</u>	<u>Total</u>
100 Personnel Services – Salaries				
100 Personnel Services – Salaries	998,730.38	893,796.66	3,353.90	2,387,512.08
Total Personnel Services – Salaries	\$998,730.38	\$893,796.66	\$3,353.90	\$2,387,512.08
200 Personnel Services – Employee Benefits				
210 Group Insurance – Contracted Provider	300,820.27	229,090.76		650,111.95
220 Social Security Contributions	75,350.78	67,644.13	240.59	179,523.35
230 PSERS Retirement Contributions	343,281.39	306,372.66	578.70	800,376.98
250 Unemployment Compensation	4,053.55	3,617.33	6.72	9,442.90
260 Workers' Compensation	4,993.67	4,456.21	16.77	11,925.11
291 Other Retirement Plans	13,040.00	11,828.20		57,759.68
Total Personnel Services – Employee Benefits	\$741,539.66	\$623,009.29	\$842.78	\$1,709,139.97
300 Purchased Professional and Technical Services				
310 Official / Administrative Services				125,423.60
329 Professional Educational Services – Other	9,812.37			11,519.17
330 Other Professional Services				163,912.92
Total Purchased Professional and Technical Services	\$9,812.37			\$300,855.69
500 Other Purchased Services				
520 Insurance – General				1,050.00
530 Communications	5,359.00	12,252.60	7,169.93	24,781.53
541 Advertising Related to Federal Grant Awards				22,570.47
580 Travel	1,308.13	11.33		1,952.13
Total Other Purchased Services	\$6,667.13	\$12,263.93	\$7,169.93	\$50,354.13
600 Supplies				
610 General Supplies	3,954.14	1,854.86	14.99	39,923.82
Total Supplies	\$3,954.14	\$1,854.86	\$14.99	\$39,923.82
800 Other Objects				
810 Dues and Fees	3,570.00	1,785.00		34,187.47
820 Claims and Judgments Against the LEA				13,379.41
Total Other Objects	\$3,570.00	\$1,785.00		\$47,566.88
Total 2300 Support Services – Administration	\$1,764,273.68	\$1,532,709.74	\$11,381.60	\$4,535,352.57

General Fund (10)

2310 Board Services

	<u>Elementary</u>	<u>Secondary</u>	<u>Federal</u>	<u>Total</u>
100 Personnel Services – Salaries				
100 Personnel Services – Salaries			528.00	5,268.32
Total Personnel Services – Salaries			\$528.00	\$5,268.32
200 Personnel Services – Employee Benefits				
220 Social Security Contributions			40.39	395.05
230 PSERS Retirement Contributions			91.10	1,817.88
250 Unemployment Compensation			1.06	20.56
260 Workers' Compensation			2.64	26.30
Total Personnel Services – Employee Benefits			\$135.19	\$2,259.79
300 Purchased Professional and Technical Services				
330 Other Professional Services				50,850.00
Total Purchased Professional and Technical Services				\$50,850.00
500 Other Purchased Services				
520 Insurance – General				1,050.00
541 Advertising Related to Federal Grant Awards				22,570.47
580 Travel				187.05
Total Other Purchased Services				\$23,807.52
600 Supplies				
610 General Supplies				592.52
Total Supplies				\$592.52
800 Other Objects				
810 Dues and Fees				19,859.87
820 Claims and Judgments Against the LEA				13,379.41
Total Other Objects				\$33,239.28
Total 2310 Board Services			\$663.19	\$116,017.43

General Fund (10)

2330 Tax Assessment and Collection Services

Elementary

Secondary

Federal

Total

100 Personnel Services – Salaries

100 Personnel Services – Salaries

56,819.75

Total Personnel Services – Salaries

\$56,819.75

200 Personnel Services – Employee Benefits

220 Social Security Contributions

4,346.74

260 Workers' Compensation

284.21

Total Personnel Services – Employee Benefits

\$4,630.95

300 Purchased Professional and Technical Services

310 Official / Administrative Services

125,423.60

Total Purchased Professional and Technical Services

\$125,423.60

600 Supplies

610 General Supplies

29,474.69

Total Supplies

\$29,474.69

Total 2330 Tax Assessment and Collection Services

\$216,348.99

General Fund (10)

2350 Legal and Accounting Services

Elementary

Secondary

Federal

Total

300 Purchased Professional and Technical Services

330 Other Professional Services

113,062.92

Total Purchased Professional and Technical Services

\$113,062.92

Total 2350 Legal and Accounting Services

\$113,062.92

General Fund (10)

	<u>Elementary</u>	<u>Secondary</u>	<u>Federal</u>	<u>Total</u>
2360 Office of the Superintendent / Executive Director Services				
100 Personnel Services – Salaries				
100 Personnel Services – Salaries				430,071.07
Total Personnel Services – Salaries				\$430,071.07
200 Personnel Services – Employee Benefits				
210 Group Insurance – Contracted Provider				120,200.92
220 Social Security Contributions				31,586.45
230 PSERS Retirement Contributions				148,417.45
250 Unemployment Compensation				1,745.80
260 Workers' Compensation				2,150.59
291 Other Retirement Plans				32,891.48
Total Personnel Services – Employee Benefits				\$336,992.69
300 Purchased Professional and Technical Services				
329 Professional Educational Services – Other				1,706.80
Total Purchased Professional and Technical Services				\$1,706.80
500 Other Purchased Services				
530 Communications	2,068.29	1,234.86		3,303.15
580 Travel				445.62
Total Other Purchased Services	\$2,068.29	\$1,234.86		\$3,748.77
600 Supplies				
610 General Supplies				4,032.62
Total Supplies				\$4,032.62
800 Other Objects				
810 Dues and Fees				8,972.60
Total Other Objects				\$8,972.60
Total 2360 Office of the Superintendent / Executive Director Services	\$2,068.29	\$1,234.86		\$785,524.55

LEA : 111444602 Mifflin County SD

Printed 12/22/2021 11:33:20 AM

General Fund (10)

2380 Office of the Principal Services

100 Personnel Services – Salaries

	<u>Elementary</u>	<u>Secondary</u>	<u>Federal</u>	<u>Total</u>
100 Personnel Services – Salaries	998,730.38	893,796.66	2,825.90	1,895,352.94
Total Personnel Services – Salaries	\$998,730.38	\$893,796.66	\$2,825.90	\$1,895,352.94

200 Personnel Services – Employee Benefits

210 Group Insurance – Contracted Provider	300,820.27	229,090.76		529,911.03
220 Social Security Contributions	75,350.78	67,644.13	200.20	143,195.11
230 PSERS Retirement Contributions	343,281.39	306,372.66	487.60	650,141.65
250 Unemployment Compensation	4,053.55	3,617.33	5.66	7,676.54
260 Workers' Compensation	4,993.67	4,456.21	14.13	9,464.01
291 Other Retirement Plans	13,040.00	11,828.20		24,868.20
Total Personnel Services – Employee Benefits	\$741,539.66	\$623,009.29	\$707.59	\$1,365,256.54

300 Purchased Professional and Technical Services

329 Professional Educational Services – Other	9,812.37			9,812.37
Total Purchased Professional and Technical Services	\$9,812.37			\$9,812.37

500 Other Purchased Services

530 Communications	3,290.71	11,017.74	7,169.93	21,478.38
580 Travel	1,308.13	11.33		1,319.46
Total Other Purchased Services	\$4,598.84	\$11,029.07	\$7,169.93	\$22,797.84

600 Supplies

610 General Supplies	3,954.14	1,854.86	14.99	5,823.99
Total Supplies	\$3,954.14	\$1,854.86	\$14.99	\$5,823.99

800 Other Objects

810 Dues and Fees	3,570.00	1,785.00		5,355.00
Total Other Objects	\$3,570.00	\$1,785.00		\$5,355.00

Total 2380 Office of the Principal Services

	\$1,762,205.39	\$1,531,474.88	\$10,718.41	\$3,304,398.68
--	-----------------------	-----------------------	--------------------	-----------------------

General Fund (10)

2400 Support Services – Pupil Health

100 Personnel Services – Salaries

100 Personnel Services – Salaries

Total Personnel Services – Salaries

200 Personnel Services – Employee Benefits

210 Group Insurance – Contracted Provider

220 Social Security Contributions

230 PSERS Retirement Contributions

250 Unemployment Compensation

260 Workers' Compensation

Total Personnel Services – Employee Benefits

300 Purchased Professional and Technical Services

329 Professional Educational Services – Other

330 Other Professional Services

390 Other Purchased Professional and Technical Services

Total Purchased Professional and Technical Services

500 Other Purchased Services

580 Travel

Total Other Purchased Services

600 Supplies

610 General Supplies

Total Supplies

700 Property

752 Capital Equipment – Original and Additional

Total Property

800 Other Objects

810 Dues and Fees

Total Other Objects

Total 2400 Support Services – Pupil Health

	<u>Elementary</u>	<u>Secondary</u>	<u>Federal</u>	<u>Total</u>
			2,272.50	381,373.16
			\$2,272.50	\$381,373.16
				103,807.97
			172.36	28,733.38
			392.11	125,215.99
			4.53	1,543.37
			11.35	1,906.92
			\$580.35	\$261,207.63
				2,930.44
				7,750.71
				720.00
				\$11,401.15
				246.04
				\$246.04
			155,420.99	163,119.34
			\$155,420.99	\$163,119.34
			33,015.20	33,015.20
			\$33,015.20	\$33,015.20
				520.00
				\$520.00
			\$191,289.04	\$850,882.52

General Fund (10)

2440 Nursing Services

	<u>Elementary</u>	<u>Secondary</u>	<u>Federal</u>	<u>Total</u>
100 Personnel Services – Salaries				
100 Personnel Services – Salaries			2,272.50	381,373.16
Total Personnel Services – Salaries			\$2,272.50	\$381,373.16
200 Personnel Services – Employee Benefits				
210 Group Insurance – Contracted Provider				103,807.97
220 Social Security Contributions			172.36	28,733.38
230 PSERS Retirement Contributions			392.11	125,215.99
250 Unemployment Compensation			4.53	1,543.37
260 Workers' Compensation			11.35	1,906.92
Total Personnel Services – Employee Benefits			\$580.35	\$261,207.63
300 Purchased Professional and Technical Services				
329 Professional Educational Services – Other				2,930.44
330 Other Professional Services				7,750.71
390 Other Purchased Professional and Technical Services				720.00
Total Purchased Professional and Technical Services				\$11,401.15
500 Other Purchased Services				
580 Travel				246.04
Total Other Purchased Services				\$246.04
600 Supplies				
610 General Supplies			155,420.99	163,119.34
Total Supplies			\$155,420.99	\$163,119.34
700 Property				
752 Capital Equipment – Original and Additional			33,015.20	33,015.20
Total Property			\$33,015.20	\$33,015.20
800 Other Objects				
810 Dues and Fees				520.00
Total Other Objects				\$520.00
Total 2440 Nursing Services			\$191,289.04	\$850,882.52

General Fund (10)

	<u>Elementary</u>	<u>Secondary</u>	<u>Federal</u>	<u>Total</u>
2500 Support Services – Business				
100 Personnel Services – Salaries				
100 Personnel Services – Salaries				436,031.19
Total Personnel Services – Salaries				\$436,031.19
200 Personnel Services – Employee Benefits				
210 Group Insurance – Contracted Provider				87,164.78
220 Social Security Contributions				32,820.55
230 PSERS Retirement Contributions				146,884.95
250 Unemployment Compensation				1,769.55
260 Workers' Compensation				2,180.07
291 Other Retirement Plans				650.00
Total Personnel Services – Employee Benefits				\$271,469.90
300 Purchased Professional and Technical Services				
310 Official / Administrative Services				87,201.05
Total Purchased Professional and Technical Services				\$87,201.05
500 Other Purchased Services				
530 Communications				13,954.59
580 Travel				117.51
Total Other Purchased Services				\$14,072.10
600 Supplies				
610 General Supplies				5,348.18
650 Supplies & Fees – Technology Related				18,352.00
Total Supplies				\$23,700.18
800 Other Objects				
810 Dues and Fees				2,173.36
Total Other Objects				\$2,173.36
Total 2500 Support Services – Business				\$834,647.78

General Fund (10)

2510 Fiscal Services

Elementary Secondary Federal Total

100 Personnel Services – Salaries

100 Personnel Services – Salaries 436,031.19

Total Personnel Services – Salaries \$436,031.19

200 Personnel Services – Employee Benefits

210 Group Insurance – Contracted Provider 87,164.78

220 Social Security Contributions 32,820.55

230 PSERS Retirement Contributions 146,884.95

250 Unemployment Compensation 1,769.55

260 Workers' Compensation 2,180.07

291 Other Retirement Plans 650.00

Total Personnel Services – Employee Benefits \$271,469.90

300 Purchased Professional and Technical Services

310 Official / Administrative Services 87,201.05

Total Purchased Professional and Technical Services \$87,201.05

500 Other Purchased Services

530 Communications 13,954.59

580 Travel 117.51

Total Other Purchased Services \$14,072.10

600 Supplies

610 General Supplies 5,348.18

650 Supplies & Fees – Technology Related 18,352.00

Total Supplies \$23,700.18

800 Other Objects

810 Dues and Fees 2,173.36

Total Other Objects \$2,173.36

Total 2510 Fiscal Services \$834,647.78

General Fund (10)

2511 Supervision of Fiscal Services - Head of Component

Elementary Secondary Federal Total

100 Personnel Services – Salaries				
100 Personnel Services – Salaries				156,486.40
Total Personnel Services – Salaries				\$156,486.40
200 Personnel Services – Employee Benefits				
210 Group Insurance – Contracted Provider				28,218.15
220 Social Security Contributions				11,937.44
230 PSERS Retirement Contributions				52,839.34
250 Unemployment Compensation				635.05
260 Workers' Compensation				782.39
Total Personnel Services – Employee Benefits				\$94,412.37
600 Supplies				
650 Supplies & Fees – Technology Related				18,352.00
Total Supplies				\$18,352.00
800 Other Objects				
810 Dues and Fees				695.00
Total Other Objects				\$695.00
Total 2511 Supervision of Fiscal Services - Head of Component				\$269,945.77

LEA : 111444602 Mifflin County SD

Printed 12/22/2021 11:33:20 AM

General Fund (10)

2514 Payroll Services

100 Personnel Services – Salaries

100 Personnel Services – Salaries

Total Personnel Services – Salaries

200 Personnel Services – Employee Benefits

210 Group Insurance – Contracted Provider

220 Social Security Contributions

230 PSERS Retirement Contributions

250 Unemployment Compensation

260 Workers' Compensation

Total Personnel Services – Employee Benefits

Total 2514 Payroll Services

Elementary

Secondary

Federal

Total

99,398.50

\$99,398.50

27,258.76

7,376.33

34,302.46

403.36

497.04

\$69,837.95

\$169,236.45

LEA : 111444602 Mifflin County SD

Printed 12/22/2021 11:33:20 AM

General Fund (10)

2515 Financial Accounting Services

100 Personnel Services – Salaries

100 Personnel Services – Salaries

55,468.25

Total Personnel Services – Salaries

\$55,468.25

200 Personnel Services – Employee Benefits

210 Group Insurance – Contracted Provider

29,091.46

220 Social Security Contributions

3,942.38

230 PSERS Retirement Contributions

19,141.93

250 Unemployment Compensation

225.18

260 Workers' Compensation

277.27

Total Personnel Services – Employee Benefits

\$52,678.22

300 Purchased Professional and Technical Services

310 Official / Administrative Services

85,951.05

Total Purchased Professional and Technical Services

\$85,951.05

500 Other Purchased Services

530 Communications

13,324.65

Total Other Purchased Services

\$13,324.65

600 Supplies

610 General Supplies

5,348.18

Total Supplies

\$5,348.18

800 Other Objects

810 Dues and Fees

508.36

Total Other Objects

\$508.36

Total 2515 Financial Accounting Services

\$213,278.71

LEA : 111444602 Mifflin County SD

Printed 12/22/2021 11:33:20 AM

General Fund (10)

2519 Other Fiscal Services

Elementary Secondary Federal Total

100 Personnel Services – Salaries

100 Personnel Services – Salaries 124,678.04

Total Personnel Services – Salaries \$124,678.04

200 Personnel Services – Employee Benefits

210 Group Insurance – Contracted Provider 2,596.41

220 Social Security Contributions 9,564.40

230 PSERS Retirement Contributions 40,601.22

250 Unemployment Compensation 505.96

260 Workers' Compensation 623.37

291 Other Retirement Plans 650.00

Total Personnel Services – Employee Benefits \$54,541.36

300 Purchased Professional and Technical Services

310 Official / Administrative Services 1,250.00

Total Purchased Professional and Technical Services \$1,250.00

500 Other Purchased Services

530 Communications 629.94

580 Travel 117.51

Total Other Purchased Services \$747.45

800 Other Objects

810 Dues and Fees 970.00

Total Other Objects \$970.00

Total 2519 Other Fiscal Services \$182,186.85

General Fund (10)

2610 Supervision of Operation and Maintenance of Plant Services

Elementary

Secondary

Federal

Total

100 Personnel Services – Salaries

100 Personnel Services – Salaries

107,677.55

Total Personnel Services – Salaries

\$107,677.55

200 Personnel Services – Employee Benefits

210 Group Insurance – Contracted Provider

21,690.83

220 Social Security Contributions

8,168.95

230 PSERS Retirement Contributions

37,159.54

250 Unemployment Compensation

437.05

260 Workers' Compensation

538.32

Total Personnel Services – Employee Benefits

\$67,994.69

Total 2610 Supervision of Operation and Maintenance of Plant Services

\$175,672.24

General Fund (10)

2611 Supervision of Operation and Maintenance of Plant Services – Head of Component

Elementary

Secondary

Federal

Total

100 Personnel Services – Salaries

100 Personnel Services – Salaries

107,677.55

Total Personnel Services – Salaries

\$107,677.55

200 Personnel Services – Employee Benefits

210 Group Insurance – Contracted Provider

21,690.83

220 Social Security Contributions

8,168.95

230 PSERS Retirement Contributions

37,159.54

250 Unemployment Compensation

437.05

260 Workers' Compensation

538.32

Total Personnel Services – Employee Benefits

\$67,994.69

Total 2611 Supervision of Operation and Maintenance of Plant Services – Head of Component

\$175,672.24

General Fund (10)

2620 Operation of Buildings Services

100 Personnel Services – Salaries

	<u>Elementary</u>	<u>Secondary</u>	<u>Federal</u>	<u>Total</u>
100 Personnel Services – Salaries			24,481.20	1,691,163.40

Total Personnel Services – Salaries			\$24,481.20	\$1,691,163.40
--	--	--	--------------------	-----------------------

200 Personnel Services – Employee Benefits

210 Group Insurance – Contracted Provider			4,663.67	736,306.45
220 Social Security Contributions			1,843.70	125,906.49
230 PSERS Retirement Contributions			4,224.24	574,717.81
250 Unemployment Compensation			48.97	6,818.17
260 Workers' Compensation			122.40	8,461.84
291 Other Retirement Plans				21,393.80

Total Personnel Services – Employee Benefits			\$10,902.98	\$1,473,604.56
---	--	--	--------------------	-----------------------

300 Purchased Professional and Technical Services

330 Other Professional Services				20,741.33
---------------------------------	--	--	--	-----------

Total Purchased Professional and Technical Services				\$20,741.33
--	--	--	--	--------------------

400 Purchased Property Services

410 Cleaning Services				83,608.42
420 Utility Services				106,013.92
430 Repairs and Maintenance Services				631,969.94
440 Rentals				49,700.39
450 Construction Services			429,519.00	429,519.00

Total Purchased Property Services			\$429,519.00	\$1,300,811.67
--	--	--	---------------------	-----------------------

500 Other Purchased Services

523 General Property and Liability Insurance				223,775.00
529 Other Insurance				36,835.00
530 Communications				5,005.82

Total Other Purchased Services				\$265,615.82
---------------------------------------	--	--	--	---------------------

600 Supplies

610 General Supplies	94,618.91	78,981.97	69,136.69	242,737.57
620 Energy				797,987.75

Total Supplies	\$94,618.91	\$78,981.97	\$69,136.69	\$1,040,725.32
-----------------------	--------------------	--------------------	--------------------	-----------------------

700 Property

752 Capital Equipment – Original and Additional				29,285.91
756 Capitalized Technology Equipment – Original			23,287.36	23,287.36
762 Capitalized Equipment - Replacement			59,142.02	152,337.51

Total Property			\$82,429.38	\$204,910.78
-----------------------	--	--	--------------------	---------------------

800 Other Objects

810 Dues and Fees				150.00
-------------------	--	--	--	--------

Total Other Objects				\$150.00
----------------------------	--	--	--	-----------------

Total 2620 Operation of Buildings Services	\$94,618.91	\$78,981.97	\$616,469.25	\$5,997,722.88
---	--------------------	--------------------	---------------------	-----------------------

General Fund (10)

2660 Safety and Security Services

100 Personnel Services – Salaries

	<u>Elementary</u>	<u>Secondary</u>	<u>Federal</u>	<u>Total</u>
100 Personnel Services – Salaries			6,653.92	8,656.42
Total Personnel Services – Salaries			\$6,653.92	\$8,656.42

200 Personnel Services – Employee Benefits

220 Social Security Contributions			501.90	653.70
230 PSERS Retirement Contributions			1,148.13	1,717.51
250 Unemployment Compensation			13.31	21.49
260 Workers' Compensation			33.27	43.36
Total Personnel Services – Employee Benefits			\$1,696.61	\$2,436.06

300 Purchased Professional and Technical Services

350 Security / Safety Services			6,268.81	122,638.87
Total Purchased Professional and Technical Services			\$6,268.81	\$122,638.87

600 Supplies

610 General Supplies	66,229.26	21,096.77		87,326.03
650 Supplies & Fees – Technology Related				4,990.00

Total Supplies	\$66,229.26	\$21,096.77		\$92,316.03
-----------------------	--------------------	--------------------	--	--------------------

Total 2660 Safety and Security Services	\$66,229.26	\$21,096.77	\$14,619.34	\$226,047.38
--	--------------------	--------------------	--------------------	---------------------

General Fund (10)

	<u>Elementary</u>	<u>Secondary</u>	<u>Federal</u>	<u>Total</u>
2700 Student Transportation Services				
100 Personnel Services – Salaries				
100 Personnel Services – Salaries				58,475.38
Total Personnel Services – Salaries				\$58,475.38
200 Personnel Services – Employee Benefits				
210 Group Insurance – Contracted Provider				24,418.84
220 Social Security Contributions				4,375.09
230 PSERS Retirement Contributions				20,179.96
250 Unemployment Compensation				237.29
260 Workers' Compensation				292.33
Total Personnel Services – Employee Benefits				\$49,503.51
300 Purchased Professional and Technical Services				
390 Other Purchased Professional and Technical Services				1,278.75
Total Purchased Professional and Technical Services				\$1,278.75
500 Other Purchased Services				
511 Student Transportation Services from Another LEA Within the State				22,815.54
513 Contracted Carriers				4,451,435.49
516 Student Transportation Services From the IU				63,548.27
519 Student Transportation Services From Other Sources			11,871.78	11,871.78
530 Communications				1,476.60
Total Other Purchased Services			\$11,871.78	\$4,551,147.68
600 Supplies				
610 General Supplies				159.74
620 Energy				298.73
650 Supplies & Fees – Technology Related				10,450.00
Total Supplies				\$10,908.47
800 Other Objects				
810 Dues and Fees				150.46
Total Other Objects				\$150.46
Total 2700 Student Transportation Services			\$11,871.78	\$4,671,464.25

General Fund (10)

2720 Vehicle Operation Services

100 Personnel Services – Salaries

100 Personnel Services – Salaries

58,475.38

Total Personnel Services – Salaries

\$58,475.38

200 Personnel Services – Employee Benefits

210 Group Insurance – Contracted Provider

24,418.84

220 Social Security Contributions

4,375.09

230 PSERS Retirement Contributions

20,179.96

250 Unemployment Compensation

237.29

260 Workers' Compensation

292.33

Total Personnel Services – Employee Benefits

\$49,503.51

300 Purchased Professional and Technical Services

390 Other Purchased Professional and Technical Services

1,278.75

Total Purchased Professional and Technical Services

\$1,278.75

500 Other Purchased Services

511 Student Transportation Services from Another LEA Within the State

22,815.54

513 Contracted Carriers

3,799,519.30

516 Student Transportation Services From the IU

63,548.27

519 Student Transportation Services From Other Sources

11,871.78

11,871.78

530 Communications

1,476.60

Total Other Purchased Services

\$11,871.78

\$3,899,231.49

600 Supplies

610 General Supplies

159.74

620 Energy

298.73

650 Supplies & Fees – Technology Related

10,450.00

Total Supplies

\$10,908.47

800 Other Objects

810 Dues and Fees

150.46

Total Other Objects

\$150.46

Total 2720 Vehicle Operation Services

\$11,871.78

\$4,019,548.06

LEA : 111444602 Mifflin County SD

Printed 12/22/2021 11:33:20 AM

General Fund (10)

2750 Nonpublic Transportation

Elementary

Secondary

Federal

Total

500 Other Purchased Services

513 Contracted Carriers

651,916.19

Total Other Purchased Services

\$651,916.19

Total 2750 Nonpublic Transportation

\$651,916.19

LEA : 111444602 Mifflin County SD

Printed 12/22/2021 11:33:20 AM

General Fund (10)

2800 Support Services – Central

	<u>Elementary</u>	<u>Secondary</u>	<u>Federal</u>	<u>Total</u>
100 Personnel Services – Salaries				
100 Personnel Services – Salaries			89,723.45	677,220.43
Total Personnel Services – Salaries			\$89,723.45	\$677,220.43
200 Personnel Services – Employee Benefits				
210 Group Insurance – Contracted Provider			18,509.15	200,983.63
220 Social Security Contributions			6,675.46	51,171.65
230 PSERS Retirement Contributions			15,457.29	218,202.50
240 Tuition Reimbursement				48,169.00
250 Unemployment Compensation			179.77	2,564.34
260 Workers' Compensation			448.27	3,386.14
Total Personnel Services – Employee Benefits			\$41,269.94	\$524,477.26
300 Purchased Professional and Technical Services				
329 Professional Educational Services – Other			8,507.75	8,507.75
340 Technical Services				102,244.68
Total Purchased Professional and Technical Services			\$8,507.75	\$110,752.43
400 Purchased Property Services				
430 Repairs and Maintenance Services				13,318.74
Total Purchased Property Services				\$13,318.74
500 Other Purchased Services				
530 Communications			55.09	9,906.89
580 Travel			45.58	1,996.49
Total Other Purchased Services			\$100.67	\$11,903.38
600 Supplies				
610 General Supplies			10,962.05	33,331.34
640 Books and Periodicals				63,642.93
650 Supplies & Fees – Technology Related			2,270,136.59	2,290,136.59
Total Supplies			\$2,281,098.64	\$2,387,110.86
700 Property				
766 Capitalized Technology Equipment – Replacement			527,078.72	527,078.72
Total Property			\$527,078.72	\$527,078.72
800 Other Objects				
810 Dues and Fees				1,090.00
Total Other Objects				\$1,090.00
Total 2800 Support Services – Central			\$2,947,779.17	\$4,252,951.82

General Fund (10)

2810 Planning, Research, Development and Evaluation Services

	<u>Elementary</u>	<u>Secondary</u>	<u>Federal</u>	<u>Total</u>
100 Personnel Services – Salaries				
100 Personnel Services – Salaries			9,735.00	597,231.98
Total Personnel Services – Salaries			\$9,735.00	\$597,231.98
200 Personnel Services – Employee Benefits				
210 Group Insurance – Contracted Provider				182,474.48
220 Social Security Contributions			744.73	45,240.92
230 PSERS Retirement Contributions			1,655.34	204,400.55
250 Unemployment Compensation			19.47	2,404.04
260 Workers' Compensation			48.69	2,986.56
Total Personnel Services – Employee Benefits			\$2,468.23	\$437,506.55
300 Purchased Professional and Technical Services				
329 Professional Educational Services – Other			8,507.75	8,507.75
340 Technical Services				102,244.68
Total Purchased Professional and Technical Services			\$8,507.75	\$110,752.43
400 Purchased Property Services				
430 Repairs and Maintenance Services				13,318.74
Total Purchased Property Services				\$13,318.74
500 Other Purchased Services				
530 Communications				9,851.80
580 Travel				1,950.91
Total Other Purchased Services				\$11,802.71
600 Supplies				
610 General Supplies			10,704.79	33,074.08
640 Books and Periodicals				63,642.93
650 Supplies & Fees – Technology Related			2,270,136.59	2,290,136.59
Total Supplies			\$2,280,841.38	\$2,386,853.60
700 Property				
766 Capitalized Technology Equipment– Replacement			527,078.72	527,078.72
Total Property			\$527,078.72	\$527,078.72
800 Other Objects				
810 Dues and Fees				1,090.00
Total Other Objects				\$1,090.00
Total 2810 Planning, Research, Development and Evaluation Services			\$2,828,631.08	\$4,085,634.73

General Fund (10)

2830 Staff Services

Elementary

Secondary

Federal

Total

200 Personnel Services – Employee Benefits

240 Tuition Reimbursement

48,169.00

Total Personnel Services – Employee Benefits

\$48,169.00

Total 2830 Staff Services

\$48,169.00

General Fund (10)

2834 Staff Development Services – Non-Instructional, Certified Staff Only

Elementary

Secondary

Federal

Total

200 Personnel Services – Employee Benefits

240 Tuition Reimbursement

46,827.00

Total Personnel Services – Employee Benefits

\$46,827.00

Total 2834 Staff Development Services – Non-Instructional, Certified Staff Only

\$46,827.00

General Fund (10)

2836 Staff Development Services – Non-Instructional, Non-Certified Staff Only

Elementary

Secondary

Federal

Total

200 Personnel Services – Employee Benefits

240 Tuition Reimbursement

1,342.00

Total Personnel Services – Employee Benefits

\$1,342.00

Total 2836 Staff Development Services – Non-Instructional, Non-Certified Staff Only

\$1,342.00

General Fund (10)

2850 State and Federal Agency Liaison Services

	<u>Elementary</u>	<u>Secondary</u>	<u>Federal</u>	<u>Total</u>
100 Personnel Services – Salaries				
100 Personnel Services – Salaries			79,988.45	79,988.45
Total Personnel Services – Salaries			\$79,988.45	\$79,988.45
200 Personnel Services – Employee Benefits				
210 Group Insurance – Contracted Provider			18,509.15	18,509.15
220 Social Security Contributions			5,930.73	5,930.73
230 PSERS Retirement Contributions			13,801.95	13,801.95
250 Unemployment Compensation			160.30	160.30
260 Workers' Compensation			399.58	399.58
Total Personnel Services – Employee Benefits			\$38,801.71	\$38,801.71
500 Other Purchased Services				
530 Communications			55.09	55.09
580 Travel			45.58	45.58
Total Other Purchased Services			\$100.67	\$100.67
600 Supplies				
610 General Supplies			257.26	257.26
Total Supplies			\$257.26	\$257.26
Total 2850 State and Federal Agency Liaison Services			\$119,148.09	\$119,148.09

LEA : 111444602 Mifflin County SD

Printed 12/22/2021 11:33:28 AM

General Fund (10)

3000 Operation of Non-Instructional Services

Total

100 Personnel Services – Salaries

100 Personnel Services – Salaries 420,451.52

Total Personnel Services – Salaries

\$420,451.52

200 Personnel Services – Employee Benefits

210 Group Insurance – Contracted Provider 27,403.57

220 Social Security Contributions 31,639.27

230 PSERS Retirement Contributions 140,164.05

250 Unemployment Compensation 1,177.15

260 Workers' Compensation 2,102.53

Total Personnel Services – Employee Benefits

\$202,486.57

300 Purchased Professional and Technical Services

390 Other Purchased Professional and Technical Services 113,433.50

Total Purchased Professional and Technical Services

\$113,433.50

500 Other Purchased Services

510 Student Transportation Services 83,985.88

530 Communications 3,277.58

580 Travel 1,750.50

591 Services Purchased Locally 30,610.35

Total Other Purchased Services

\$119,624.31

600 Supplies

610 General Supplies 108,237.99

Total Supplies

\$108,237.99

800 Other Objects

810 Dues and Fees 15,372.55

860 Grants To Municipal and Community Service Organizations 1,002.84

Total Other Objects

\$16,375.39

Total 3000 Operation of Non-Instructional Services

\$980,609.28

LEA : 111444602 Mifflin County SD

Printed 12/22/2021 11:33:28 AM

General Fund (10)

3200 Student Activities

	<u>Elementary</u>	<u>Secondary</u>	<u>Federal</u>	<u>Total</u>
100 Personnel Services – Salaries				
100 Personnel Services – Salaries			8,337.45	410,438.77
Total Personnel Services – Salaries			\$8,337.45	\$410,438.77
200 Personnel Services – Employee Benefits				
210 Group Insurance – Contracted Provider				27,403.57
220 Social Security Contributions			633.43	30,881.74
230 PSERS Retirement Contributions			1,438.62	138,436.42
250 Unemployment Compensation			16.67	1,157.11
260 Workers' Compensation			41.90	2,052.45
Total Personnel Services – Employee Benefits			\$2,130.62	\$199,931.29
300 Purchased Professional and Technical Services				
390 Other Purchased Professional and Technical Services				113,433.50
Total Purchased Professional and Technical Services				\$113,433.50
500 Other Purchased Services				
510 Student Transportation Services				83,985.88
530 Communications				3,277.58
580 Travel				1,750.50
591 Services Purchased Locally			1,820.00	30,610.35
Total Other Purchased Services			\$1,820.00	\$119,624.31
600 Supplies				
610 General Supplies				94,031.54
Total Supplies				\$94,031.54
800 Other Objects				
810 Dues and Fees				15,372.55
Total Other Objects				\$15,372.55
Total 3200 Student Activities			\$12,288.07	\$952,831.96

LEA : 111444602 Mifflin County SD

Printed 12/22/2021 11:33:28 AM

General Fund (10)

	<u>Elementary</u>	<u>Secondary</u>	<u>Federal</u>	<u>Total</u>
3300 Community Services				
100 Personnel Services – Salaries				
100 Personnel Services – Salaries			10,012.75	10,012.75
Total Personnel Services – Salaries			\$10,012.75	\$10,012.75
200 Personnel Services – Employee Benefits				
220 Social Security Contributions			757.53	757.53
230 PSERS Retirement Contributions			1,727.63	1,727.63
250 Unemployment Compensation			20.04	20.04
260 Workers' Compensation			50.08	50.08
Total Personnel Services – Employee Benefits			\$2,555.28	\$2,555.28
600 Supplies				
610 General Supplies			14,206.45	14,206.45
Total Supplies			\$14,206.45	\$14,206.45
800 Other Objects				
860 Grants To Municipal and Community Service Organizations				1,002.84
Total Other Objects				\$1,002.84
Total 3300 Community Services			\$26,774.48	\$27,777.32

General Fund (10)

5000 Other Expenditures and Financing Uses

Total

800 Other Objects

830 Interest 3,297,532.85

880 Refunds of Prior Years' Receipts 2,566.10

Total Other Objects \$3,300,098.95

900 Other Uses of Funds

910 Redemption of Principal 3,860,000.00

939 Other Fund Transfers 1,013,449.91

Total Other Uses of Funds \$4,873,449.91

Total 5000 Other Expenditures and Financing Uses \$8,173,548.86

LEA : 111444602 Mifflin County SD

Printed 12/22/2021 11:33:39 AM

General Fund (10)

	<u>Elementary</u>	<u>Secondary</u>	<u>Federal</u>	<u>Total</u>
5100 Debt Service / Other Expenditures and Financing Uses				
800 Other Objects				
830 Interest				3,297,532.85
880 Refunds of Prior Years' Receipts				2,566.10
Total Other Objects				\$3,300,098.95
900 Other Uses of Funds				
910 Redemption of Principal				3,860,000.00
Total Other Uses of Funds				\$3,860,000.00
Total 5100 Debt Service / Other Expenditures and Financing Uses				\$7,160,098.95

LEA : 111444602 Mifflin County SD

Printed 12/22/2021 11:33:39 AM

General Fund (10)

5110 Debt Service

Elementary

Secondary

Federal

Total

800 Other Objects

830 Interest

3,297,532.85

Total Other Objects

\$3,297,532.85

900 Other Uses of Funds

910 Redemption of Principal

3,860,000.00

Total Other Uses of Funds

\$3,860,000.00

Total 5110 Debt Service

\$7,157,532.85

LEA : 111444602 Mifflin County SD

Printed 12/22/2021 11:33:39 AM

General Fund (10)

5130 Refund of Prior Year Revenues / Receipts

Elementary

Secondary

Federal

Total

800 Other Objects

880 Refunds of Prior Years' Receipts

2,566.10

Total Other Objects

\$2,566.10

Total 5130 Refund of Prior Year Revenues / Receipts

\$2,566.10

LEA : 111444602 Mifflin County SD

Printed 12/22/2021 11:33:39 AM

General Fund (10)

	<u>Elementary</u>	<u>Secondary</u>	<u>Federal</u>	<u>Total</u>
5200 Interfund Transfers – Out				
900 Other Uses of Funds				
939 Other Fund Transfers				1,013,449.91
Total Other Uses of Funds				\$1,013,449.91
Total 5200 Interfund Transfers – Out				\$1,013,449.91

LEA : 111444602 Mifflin County SD

Printed 12/22/2021 11:33:39 AM

General Fund (10)

5230 Capital Projects Fund Transfers

Elementary

Secondary

Federal

Total

900 Other Uses of Funds

939 Other Fund Transfers

1,000,000.00

Total Other Uses of Funds

\$1,000,000.00

Total 5230 Capital Projects Fund Transfers

\$1,000,000.00

LEA : 111444602 Mifflin County SD

Printed 12/22/2021 11:33:39 AM

General Fund (10)

5250 Enterprise Fund Transfers

Elementary

Secondary

Federal

Total

900 Other Uses of Funds

939 Other Fund Transfers

13,449.91

Total Other Uses of Funds

\$13,449.91

Total 5250 Enterprise Fund Transfers

\$13,449.91

LEA : 111444602 Mifflin County SD

Printed 12/22/2021 11:33:24 AM

Other Capital Projects Fund (39)

2000 Support Services

	<u>Total</u>
600 Supplies	
650 Supplies & Fees – Technology Related	239,838.50
Total Supplies	\$239,838.50
700 Property	
762 Capitalized Equipment - Replacement	143,394.00
Total Property	\$143,394.00
Total 2000 Support Services	\$383,232.50

LEA : 111444602 Mifflin County SD

Printed 12/22/2021 11:33:24 AM

Other Capital Projects Fund (39)

2600 Operation and Maintenance of Plant Services

Elementary

Secondary

Federal

Total

700 Property

762 Capitalized Equipment - Replacement

143,394.00

Total Property

\$143,394.00

Total 2600 Operation and Maintenance of Plant Services

\$143,394.00

LEA : 111444602 Mifflin County SD

Printed 12/22/2021 11:33:24 AM

Other Capital Projects Fund (39)

2620 Operation of Buildings Services

Elementary

Secondary

Federal

Total

700 Property

762 Capitalized Equipment - Replacement

143,394.00

Total Property

\$143,394.00

Total 2620 Operation of Buildings Services

\$143,394.00

LEA : 111444602 Mifflin County SD

Printed 12/22/2021 11:33:24 AM

Other Capital Projects Fund (39)

2800 Support Services – Central

Elementary

Secondary

Federal

Total

600 Supplies

650 Supplies & Fees – Technology Related

239,838.50

Total Supplies

\$239,838.50

Total 2800 Support Services – Central

\$239,838.50

LEA : 111444602 Mifflin County SD

Printed 12/22/2021 11:33:24 AM

Other Capital Projects Fund (39)

2810 Planning, Research, Development and Evaluation Services

Elementary

Secondary

Federal

Total

600 Supplies

650 Supplies & Fees – Technology Related

239,838.50

Total Supplies

\$239,838.50

Total 2810 Planning, Research, Development and Evaluation Services

\$239,838.50

Other Capital Projects Fund (39)

4000 Facilities Acquisition, Construction and Improvement Services

Total

400 Purchased Property Services

450 Construction Services

2,393,251.00

Total Purchased Property Services

\$2,393,251.00

700 Property

710 Land and Improvements

1,198,362.38

Total Property

\$1,198,362.38

Total 4000 Facilities Acquisition, Construction and Improvement Services

\$3,591,613.38

LEA : 111444602 Mifflin County SD

Printed 12/22/2021 11:33:33 AM

Other Capital Projects Fund (39)

4100 Site Acquisition Services – Original and Additional

Elementary

Secondary

Federal

Total

700 Property

710 Land and Improvements

850,000.00

Total Property

\$850,000.00

Total 4100 Site Acquisition Services – Original and Additional

\$850,000.00

LEA : 111444602 Mifflin County SD

Printed 12/22/2021 11:33:33 AM

Other Capital Projects Fund (39)

4200 Existing Site Improvement Services

Elementary

Secondary

Federal

Total

700 Property

710 Land and Improvements

348,362.38

Total Property

\$348,362.38

Total 4200 Existing Site Improvement Services

\$348,362.38

LEA : 111444602 Mifflin County SD

Printed 12/22/2021 11:33:33 AM

Other Capital Projects Fund (39)

4600 Existing Building Improvement Services

Elementary

Secondary

Federal

Total

400 Purchased Property Services

450 Construction Services

2,393,251.00

Total Purchased Property Services

\$2,393,251.00

Total 4600 Existing Building Improvement Services

\$2,393,251.00

LEA : 111444602 Mifflin County SD

Printed 12/22/2021 11:33:40 AM

Other Capital Projects Fund (39)

5000 Other Expenditures and Financing Uses

Total

800 Other Objects

830 Interest

23,648.97

Total Other Objects

\$23,648.97

900 Other Uses of Funds

910 Redemption of Principal

44,600.53

Total Other Uses of Funds

\$44,600.53

Total 5000 Other Expenditures and Financing Uses

\$68,249.50

Other Capital Projects Fund (39)

5100 Debt Service / Other Expenditures and Financing Uses

Elementary

Secondary

Federal

Total

800 Other Objects

830 Interest

23,648.97

Total Other Objects

\$23,648.97

900 Other Uses of Funds

910 Redemption of Principal

44,600.53

Total Other Uses of Funds

\$44,600.53

Total 5100 Debt Service / Other Expenditures and Financing Uses

\$68,249.50

LEA : 111444602 Mifflin County SD

Printed 12/22/2021 11:33:40 AM

Other Capital Projects Fund (39)

	<u>Elementary</u>	<u>Secondary</u>	<u>Federal</u>	<u>Total</u>
5110 Debt Service				
800 Other Objects				
830 Interest				23,648.97
Total Other Objects				\$23,648.97
900 Other Uses of Funds				
910 Redemption of Principal				44,600.53
Total Other Uses of Funds				\$44,600.53
Total 5110 Debt Service				\$68,249.50

	<u>General Fund(10)</u>	<u>Student Sponsored Activity Fund(21)</u>	<u>Public Purpose Trust(27)</u>	<u>Other Compt Approved (28)</u>	<u>Athletic / Activity(29)</u>
1000 Instruction					
1100 Regular Programs - Elementary / Secondary	30,230,132.72				
1200 Special Programs - Elementary / Secondary	11,749,665.52				
1300 Vocational Education	3,696,107.80				
1400 Other Instructional Programs - Elementary / Secondary	1,895,713.78				
1500 Nonpublic School Programs	115,315.53				
Total Instruction	\$47,686,935.35				
2000 Support Services					
2100 Support Services - Students	2,188,115.42				
2200 Support Services - Instructional Staff	1,446,426.85				
2300 Support Services - Administration	4,535,352.57				
2400 Support Services - Pupil Health	850,882.52				
2500 Support Services - Business	834,647.78				
2600 Operation and Maintenance of Plant Services	6,399,442.50				
2700 Student Transportation Services	4,671,464.25				
2800 Support Services - Central	4,252,951.82				
Total Support Services	\$25,179,283.71				
3000 Operation of Non-Instructional Services					
3200 Student Activities	952,831.96				
3300 Community Services	27,777.32				
Total Operation of Non-Instructional Services	\$980,609.28				
4000 Facilities Acquisition, Construction and Improvement Services					
4100 Site Acquisition Services - Original and Additional					
4200 Existing Site Improvement Services					
4600 Existing Building Improvement Services					
Total Facilities Acquisition, Construction and Improvement Services					
5000 Other Expenditures and Financing Uses					
5100 Debt Service / Other Expenditures and Financing Uses	7,160,098.95				
5200 Interfund Transfers - Out	1,013,449.91				
Total Other Expenditures and Financing Uses	\$8,173,548.86				
TOTAL ACTUAL EXPENDITURES & OTHER FINANCING USES	\$82,020,377.20				

	<u>Capital Reserve (690, 1850)(31)</u>	<u>Capital Reserve (1431)(32)</u>	<u>Other Capital Projects Fund(39)</u>	<u>Debt Service(40)</u>	<u>Permanent(90)</u>
1000 Instruction					
1100 Regular Programs - Elementary / Secondary					
1200 Special Programs - Elementary / Secondary					
1300 Vocational Education					
1400 Other Instructional Programs - Elementary / Secondary					
1500 Nonpublic School Programs					
Total Instruction					
2000 Support Services					
2100 Support Services - Students					
2200 Support Services - Instructional Staff					
2300 Support Services - Administration					
2400 Support Services - Pupil Health					
2500 Support Services - Business					
2600 Operation and Maintenance of Plant Services			143,394.00		
2700 Student Transportation Services					
2800 Support Services - Central			239,838.50		
Total Support Services			\$383,232.50		
3000 Operation of Non-Instructional Services					
3200 Student Activities					
3300 Community Services					
Total Operation of Non-Instructional Services					
4000 Facilities Acquisition, Construction and Improvement Services					
4100 Site Acquisition Services - Original and Additional			850,000.00		
4200 Existing Site Improvement Services			348,362.38		
4600 Existing Building Improvement Services			2,393,251.00		
Total Facilities Acquisition, Construction and Improvement Services			\$3,591,613.38		
5000 Other Expenditures and Financing Uses					
5100 Debt Service / Other Expenditures and Financing Uses			68,249.50		
5200 Interfund Transfers - Out					
Total Other Expenditures and Financing Uses			\$68,249.50		
TOTAL ACTUAL EXPENDITURES & OTHER FINANCING USES			\$4,043,095.38		

	<u>Total</u>
1000 Instruction	
1100 Regular Programs - Elementary / Secondary	30,230,132.72
1200 Special Programs - Elementary / Secondary	11,749,665.52
1300 Vocational Education	3,696,107.80
1400 Other Instructional Programs - Elementary / Secondary	1,895,713.78
1500 Nonpublic School Programs	115,315.53
Total Instruction	\$47,686,935.35
2000 Support Services	
2100 Support Services - Students	2,188,115.42
2200 Support Services - Instructional Staff	1,446,426.85
2300 Support Services - Administration	4,535,352.57
2400 Support Services - Pupil Health	850,882.52
2500 Support Services - Business	834,647.78
2600 Operation and Maintenance of Plant Services	6,542,836.50
2700 Student Transportation Services	4,671,464.25
2800 Support Services - Central	4,492,790.32
Total Support Services	\$25,562,516.21
3000 Operation of Non-Instructional Services	
3200 Student Activities	952,831.96
3300 Community Services	27,777.32
Total Operation of Non-Instructional Services	\$980,609.28
4000 Facilities Acquisition, Construction and Improvement Services	
4100 Site Acquisition Services - Original and Additional	850,000.00
4200 Existing Site Improvement Services	348,362.38
4600 Existing Building Improvement Services	2,393,251.00
Total Facilities Acquisition, Construction and Improvement Services	\$3,591,613.38
5000 Other Expenditures and Financing Uses	
5100 Debt Service / Other Expenditures and Financing Uses	7,228,348.45
5200 Interfund Transfers - Out	1,013,449.91
Total Other Expenditures and Financing Uses	\$8,241,798.36
TOTAL ACTUAL EXPENDITURES & OTHER FINANCING USES	\$86,063,472.58

LEA : 111444602 Mifflin County SD

Printed 12/22/2021 11:34:14 AM

PSERS Salary Data (Salary Data should relate to the General Fund only)

Amount Description	Amount
Total Salary Base for salaries subject to PSERS withholding	28,847,507.00
Total Federally Funded salaries subject to PSERS withholding	2,864,516.00
	<hr/>

Title I Expenditure Data

Amount Description	Amount
Expenditures Funded with Current Title I Funds	1,581,222.00
Expenditures Funded with Carry over Title I Funds	668,920.00
Total Title I Expenditure Data	\$2,250,142.00
	<hr/>

Title IV Revenue Data

Amount Description	Amount
Revenue from Title IV-A-1: Student Support and Academic Enrichment Grants	173,396.77
Revenue from Title IV-B: 21st Century Community Learning Centers	
	<hr/>

Title V Revenue Data

Amount Description	Amount
Revenue from Title V-B-2: Rural and Low-Income School Programs	
Revenue from Title V-B-1: Small Rural School Achievement (Directly from the Federal Govt)	
	<hr/>

1 .	<u>Current Special Education Expenditures/Expenses within Functions 1000, 2000, 3100, and 3200</u>	20,412,751.90
2 .	<u>Current Special Education Expenditures for Instruction Functions 1000 and 3200</u>	15,061,757.59
3 .	<u>Current Special Education Expenditures for Pupil Support Services Function 2100</u>	920,916.61
4 .	<u>Current Special Education Expenditures for Instructional Staff Support Services Function 2200</u>	509,358.66
5 .	<u>Current Special Education Expenditures for Student Transportation Support Services Function 2700</u>	1,057,829.92

Note: Do not report total Special Education expenditures for the functions listed above. Refer to the AFR User Manual for specific instructions on Funds/Functions/Objects to be included and excluded on each line.

Benefits for Staff Relative to Collective Bargaining Agreements

	OBJECT	COVERED	NOT COVERED	TOTAL
10 General Fund	No Self Insurance data to report			
	211 Medical Insurance	7,258,309.61	745,224.68	8,003,534.29
	212 Dental Insurance	286,231.25	28,622.79	314,854.04
	215 Eye Care Insurance	45,548.80	6,643.30	52,192.10
	216 Prescription Insurance			
	271 Self-Insurance Medical Benefits			
	272 Self-Insurance Dental Benefits			
	275 Self-Insurance Eye Care Benefits			
	276 Self-Insurance Prescription Benefits			
	FUND TOTAL		\$7,590,089.66	\$780,490.77
50 Enterprise Fund	No Self Insurance data to report			
	211 Medical Insurance	224,973.19		224,973.19
	212 Dental Insurance	11,069.16		11,069.16
	215 Eye Care Insurance	2,034.00		2,034.00
	216 Prescription Insurance			
	271 Self-Insurance Medical Benefits			
	272 Self-Insurance Dental Benefits			
	275 Self-Insurance Eye Care Benefits			
	276 Self-Insurance Prescription Benefits			
	FUND TOTAL		\$238,076.35	
60 Internal Service Fund	No Self Insurance data to report			
	211 Medical Insurance			
	212 Dental Insurance			
	215 Eye Care Insurance			
	216 Prescription Insurance			
	271 Self-Insurance Medical Benefits			
	272 Self-Insurance Dental Benefits			
	275 Self-Insurance Eye Care Benefits			
	276 Self-Insurance Prescription Benefits			
	FUND TOTAL			
Total of All Funds		\$7,828,166.01	\$780,490.77	\$8,608,656.78

LEA : 111444602 Mifflin County SD

Printed 12/22/2021 11:34:26 AM

Function	Special Education (Prior Year)	Nonspecial Education (Prior Year)	Total (Prior Year)	Special Education (Current Year)	Nonspecial Education (Current Year)	Total (Current Year)
2120 Guidance Services	217,679.80	1,147,155.77	1,364,835.57	229,374.40	1,181,292.00	1,410,666.40
2140 Psychological Services	419,743.54	139,914.51	559,658.05	413,593.23	137,864.41	551,457.64
2150 Speech Pathology and Audiology Services						
2160 Social Work Services	14,844.13	78,227.45	93,071.58	30,316.36	156,131.13	186,447.49
2260 Instruction and Curriculum Development Services	98,420.94	518,670.79	617,091.73	67,818.39	349,268.84	417,087.23
2350 Legal and Accounting Services	25,962.50	93,407.75	119,370.25	17,468.83	95,594.09	113,062.92
2420 Medical Services						
2440 Nursing Services	106,709.01	562,348.26	669,057.27	138,353.50	712,529.02	850,882.52
2700 Student Transportation Services	812,057.24	4,279,479.00	5,091,536.24	759,580.09	3,911,884.16	4,671,464.25
Total	\$1,695,417.16	\$6,819,203.53	\$8,514,620.69	\$1,656,504.80	\$6,544,563.65	\$8,201,068.45

LEA : 111444602 Mifflin County SD

Printed 12/22/2021 11:34:31 AM

(PRINCIPAL AMOUNTS ONLY)

GOVERNMENTAL FUNDS/ ACTIVITIES

	Short-Term Borrowing	General Obligation Bonds/Notes	Authority Building Obligations	Other Long-Term Debt	Other Post-Employment Benefits (OPEB)	Compensated Absences	Net Pension Liability	Total
1. Debt at Beginning of Fiscal Year		83,420,000.00		6,869,400.00	14,763,248.00	2,238,870.00	87,686,508.00	194,978,026.00
2. Additional Debt Incurred During Year				1,110,000.00	244,239.00	39,759.00	3,878,586.00	5,272,584.00
3. Retirements and Repayments		3,860,000.00		668,950.00				4,528,950.00
4. Debt at End of Fiscal Year		79,560,000.00		7,310,450.00	15,007,487.00	2,278,629.00	91,565,094.00	195,721,660.00
5. Accreted Interest at End Of Fiscal Year								
6. Total Debt and Accreted Interest		79,560,000.00		7,310,450.00	15,007,487.00	2,278,629.00	91,565,094.00	195,721,660.00
7. Current Portion P&I - Due within 1 year		7,984,719.00		812,549.00				8,797,268.00
8. Interest Paid during current fiscal year		3,297,532.85		23,649.00				3,321,181.85

(PRINCIPAL AMOUNTS ONLY)

PROPRIETARY FUNDS

	Short-Term Borrowing	General Obligation Bonds/Notes	Authority Building Obligations	Other Long-Term Debt	Other Post-Employment Benefits (OPEB)	Compensated Absences	Net Pension Liability	Total
1. Debt at Beginning of Fiscal Year					418,061.00	71,830.00	2,483,081.00	2,972,972.00
2. Additional Debt Incurred During Year							92,037.66	92,037.66
3. Retirements and Repayments					13,479.71	11,347.50		24,827.21
4. Debt at End of Fiscal Year					404,581.29	60,482.50	2,575,118.66	3,040,182.45
5. Accreted Interest at End Of Fiscal Year								
6. Total Debt and Accreted Interest					404,581.29	60,482.50	2,575,118.66	3,040,182.45
7. Current Portion P&I - Due within 1 year								
8. Interest Paid during current fiscal year								

Total Principal and Interest Payments Made by Your School - All Funds

Function	Fund		Principal (910)	Principal (920)	Interest (830)	Total (Principal +Interest)	Misc Other Uses (990)
5110	10	General Fund	3,860,000.00		3,297,532.85	7,157,532.85	
5110	20	Special Revenue Funds					
5110	30	Capital Projects Funds	44,600.53		23,648.97	68,249.50	
5110	40	Debt Service Fund					
5110	90	Permanent Fund					
5120	10	General Fund					
5120	20	Special Revenue Funds					
5120	30	Capital Projects Funds					
5120	40	Debt Service Fund					
Total Debt Payments - Governmental Funds			\$3,904,600.53		\$3,321,181.82	\$7,225,782.35	

Function	Fund		Principal (910)	Principal (920)	Interest (830)	Total (Principal +Interest)
5110	50	Enterprise Fund				
5110	60	Internal Service Fund				
5120	50	Enterprise Fund				
5120	60	Internal Service Fund				
Total Debt Payments - Proprietary Funds						

LEA : 111444602 Mifflin County SD

Printed 12/22/2021 11:34:31 AM

Debt Details
Governmental Funds/ Activities

Debt Category	Debt Issue Date (MM/YYYY)	Debt at Beginning of Fiscal Year	Principal Amounts Only			Current Portion Due Within One Year (Principal and Interest)	Interest Paid During Fiscal Year
			Additions	Reductions / Repayments	Debt at End of Fiscal Year		
General Obligation Bonds/Notes – CIB	03/2020	14,395,000.00		5,000.00	14,390,000.00	1,252,010.00	491,939.07
General Obligation Bonds/Notes – CIB	05/2019	8,200,000.00		5,000.00	8,195,000.00	332,102.50	327,195.00
General Obligation Bonds/Notes – CIB	06/2019	7,980,000.00		475,000.00	7,505,000.00	679,342.50	206,367.50
General Obligation Bonds/Notes – CIB	04/2018	9,985,000.00		10,000.00	9,975,000.00	337,089.00	327,306.28
General Obligation Bonds/Notes – CIB	12/2016	21,530,000.00		1,600,000.00	19,930,000.00	2,587,625.00	993,550.00
General Obligation Bonds/Notes – CIB	03/2016	21,330,000.00		1,765,000.00	19,565,000.00	2,796,550.00	951,175.00
Extended Term Financing Agreements			1,110,000.00	44,601.00	1,065,399.00	188,199.00	23,649.00
Other Long Term Debt/Liabilities		6,869,400.00		624,349.00	6,245,051.00	624,350.00	
Compensated Absences		2,238,870.00	39,759.00		2,278,629.00		
Other Post-Employment Benefits (OPEB)		14,763,248.00	244,239.00		15,007,487.00		
Net Pension Liability		87,686,508.00	3,878,586.00		91,565,094.00		
Totals for Debt Entered:		\$194,978,026.00	\$5,272,584.00	\$4,528,950.00	\$195,721,660.00	\$8,797,268.00	\$3,321,181.85

Bond Details
Proprietary Funds

Debt Category	Debt Issue Date (MM/YYYY)	Debt at Beginning of Fiscal Year	Principal Amounts Only			Current Portion Due Within One Year (Principal and Interest)	Interest Paid During Fiscal Year
			Additions	Reductions / Repayments	Debt at End of Fiscal Year		
Compensated Absences		71,830.00		11,347.50	60,482.50		
Other Post-Employment Benefits (OPEB)		418,061.00		13,479.71	404,581.29		
Net Pension Liability		2,483,081.00	92,037.66		2,575,118.66		
Totals for Debt Entered:		\$2,972,972.00	\$92,037.66	\$24,827.21	\$3,040,182.45		

General Fund (10)

Section 1: Tuition/Purchased Services as Reported within Expenditure Detail

	Amount
Tuition Reported in General Fund Expenditures 1000-560	7,162,618.38
Purchased Services in General Fund Expenditures 1000-594 and 1000-597	913.43
Section 1 Total	\$7,163,531.81

Section 2: Tuition Paid to Institution Types During Fiscal Year

	Tuition Paid For Nonspecial Education	Tuition Paid For Special Education	Total
1 1306 Institutions			
2 Institutionalized Children's Programs		913.43	913.43
3 Juveniles Incarcerated in Adult Facilities			
4 Residential Treatment Facilities	26,085.00	23,728.00	49,813.00
5 Other Local Education Agencies	96,853.18	56,486.82	153,340.00
6 Brick and Mortar Charter Schools	455,400.53	482,897.22	938,297.75
7 Cyber Charter Schools	2,232,102.87	940,595.67	3,172,698.54
8 Career and Technology Centers	407,343.27	1,562,401.73	1,969,745.00
9 Approved Private Schools	12,053.11	17,160.16	29,213.27
10 PA Chartered Schools for the Deaf and Blind			
11 Private Residential Rehabilitative Institutions		16,247.22	16,247.22
12 Juvenile Detention Centers	20,607.93		20,607.93
13 Special Program Jointures			
14 Other Tuition Not Included Elsewhere In This Section	76,841.23	735,814.44	812,655.67
Section 2 Total	\$3,327,287.12	\$3,836,244.69	\$7,163,531.81

LEA : 111444602 Mifflin County SD

Printed 12/22/2021 11:34:37 AM

Food Service / Cafeteria Operations Fund (51)

3000 Operation of Non-Instructional Services

Total

100 Personnel Services – Salaries

100 Personnel Services – Salaries 762,362.87

Total Personnel Services – Salaries

\$762,362.87

200 Personnel Services – Employee Benefits

210 Group Insurance – Contracted Provider 275,709.79

220 Social Security Contributions 56,758.36

230 PSERS Retirement Contributions 210,773.29

250 Unemployment Compensation 1,525.44

260 Workers' Compensation 3,812.06

280 Other Post-Employment Benefits (OPEB) (4,616.01)

291 Other Retirement Plans 1,983.42

Total Personnel Services – Employee Benefits

\$545,946.35

400 Purchased Property Services

410 Cleaning Services 5,520.31

420 Utility Services 243.44

430 Repairs and Maintenance Services 24,731.51

460 Extermination Services 450.00

Total Purchased Property Services

\$30,945.26

500 Other Purchased Services

520 Insurance – General 4,703.18

530 Communications 944.32

550 Printing and Binding 1,230.00

570 Food Service Management 131,080.17

580 Travel 628.39

Total Other Purchased Services

\$138,586.06

600 Supplies

610 General Supplies 101,309.44

630 Food 768,815.46

Total Supplies

\$870,124.90

800 Other Objects

890 Miscellaneous Expenditures 6,777.20

Total Other Objects

\$6,777.20

Total 3000 Operation of Non-Instructional Services

\$2,354,742.64

Food Service / Cafeteria Operations Fund (51)

	<u>Elementary</u>	<u>Secondary</u>	<u>Federal</u>	<u>Total</u>
3100 Food Services				
100 Personnel Services – Salaries				
100 Personnel Services – Salaries				762,362.87
Total Personnel Services – Salaries				\$762,362.87
200 Personnel Services – Employee Benefits				
210 Group Insurance – Contracted Provider				275,709.79
220 Social Security Contributions				56,758.36
230 PSERS Retirement Contributions				210,773.29
250 Unemployment Compensation				1,525.44
260 Workers' Compensation				3,812.06
280 Other Post-Employment Benefits (OPEB)				(4,616.01)
291 Other Retirement Plans				1,983.42
Total Personnel Services – Employee Benefits				\$545,946.35
400 Purchased Property Services				
410 Cleaning Services				5,520.31
420 Utility Services				243.44
430 Repairs and Maintenance Services				24,731.51
460 Extermination Services				450.00
Total Purchased Property Services				\$30,945.26
500 Other Purchased Services				
520 Insurance – General				4,703.18
530 Communications				944.32
550 Printing and Binding				1,230.00
570 Food Service Management				131,080.17
580 Travel				628.39
Total Other Purchased Services				\$138,586.06
600 Supplies				
610 General Supplies				101,309.44
630 Food				768,815.46
Total Supplies				\$870,124.90
800 Other Objects				
890 Miscellaneous Expenditures				6,777.20
Total Other Objects				\$6,777.20
Total 3100 Food Services				\$2,354,742.64

	<u>Food Service(51)</u>	<u>Child Care Operations(52)</u>	<u>Other Enterprise(58)</u>	<u>Internal Service(60)</u>	<u>Total</u>
3000 <u>Operation of Non-Instructional Services</u>					
3100 Food Services	2,354,742.64				2,354,742.64
Total Operation of Non-Instructional Services	\$2,354,742.64				\$2,354,742.64
TOTAL ACTUAL EXPENDITURES & OTHER FINANCING USES	\$2,354,742.64				\$2,354,742.64

LEA : 111444602 Mifflin County SD

Printed 12/22/2021 11:34:56 AM

Fund	School	School Number	Local Personnel	Local Nonpersonnel	State Personnel	State Nonpersonnel	Federal Personnel	Federal Nonpersonnel	Total	Explanation
10										
	East Derry El Sch	6261	1,042,539.00	229,084.00	1,562,580.00	289,181.00	432,703.00	168,408.00	3,724,495.00	
	Indian Valley El Sch	8182	1,378,687.00	566,425.00	1,827,815.00	705,075.00	765,714.00	267,009.00	5,510,725.00	
	Indian Valley Intrmd Sch	8183	868,975.00	192,942.00	1,068,804.00	243,527.00	61,784.00	120,650.00	2,556,682.00	
	Lewistown El Sch	7789	2,095,999.00	455,807.00	2,941,105.00	573,022.00	1,005,954.00	868,452.00	7,940,339.00	
	Lewistown Intrmd Sch	8184	2,235,528.00	394,702.00	2,748,406.00	495,180.00	159,447.00	287,586.00	6,320,849.00	
	Mifflin Co HS	8187	5,248,182.00	1,235,865.00	6,448,902.00	1,533,382.00	846,184.00	560,141.00	15,872,656.00	
	Mifflin Co JHS	8186	3,491,847.00	620,388.00	4,294,166.00	776,696.00	194,112.00	453,816.00	9,831,025.00	
	Mifflin Co MS	8185	3,374,818.00	705,935.00	4,150,988.00	870,573.00	332,498.00	451,014.00	9,885,826.00	
	Strodes Mills El Sch	3196	823,241.00	211,879.00	1,208,293.00	268,648.00	683,448.00	166,547.00	3,362,056.00	
Total			20,559,816.00	4,613,027.00	26,251,059.00	5,755,284.00	4,481,844.00	3,343,623.00	65,004,653.00	

	<u>Nonspecial Education</u>	<u>Special Education</u>
1000 Instruction		
1400 Other Instructional Programs - Elementary / Secondary	1,105.00	
Total Instruction	\$1,105.00	
TOTAL ACTUAL EXPENDITURES & OTHER FINANCING USES	\$1,105.00	

LEA : 111444602 Mifflin County SD

Printed 12/22/2021 11:35:05 AM

1000 Instruction

100 Personnel Services - Salaries

100 Personnel Services - Salaries 773.00

Total Personnel Services - Salaries \$773.00

200 Personnel Services - Employee Benefits

220 Social Security Contributions 58.00

230 PSERS Retirement Contributions 267.00

250 Unemployment Compensation 3.00

260 Workers' Compensation 4.00

Total Personnel Services - Employee Benefits \$332.00

Total 1000 Instruction \$1,105.00

LEA : 111444602 Mifflin County SD

Printed 12/22/2021 11:35:05 AM

1400 Other Instructional Programs - Elementary / Secondary	<u>Nonspecial Education</u>	<u>Special Education</u>
100 Personnel Services - Salaries		
100 Personnel Services - Salaries	773.00	
Total Personnel Services - Salaries	\$773.00	
200 Personnel Services - Employee Benefits		
220 Social Security Contributions	58.00	
230 PSERS Retirement Contributions	267.00	
250 Unemployment Compensation	3.00	
260 Workers' Compensation	4.00	
Total Personnel Services - Employee Benefits	\$332.00	
Total 1400 Other Instructional Programs - Elementary / Secondary	\$1,105.00	

LEA : 111444602 Mifflin County SD

Printed 12/22/2021 11:35:05 AM

1440 Alternative Regular Education Programs	<u>Nonspecial Education</u>	<u>Special Education</u>
100 Personnel Services - Salaries		
100 Personnel Services - Salaries	773.00	
Total Personnel Services - Salaries	\$773.00	
200 Personnel Services - Employee Benefits		
220 Social Security Contributions	58.00	
230 PSERS Retirement Contributions	267.00	
250 Unemployment Compensation	3.00	
260 Workers' Compensation	4.00	
Total Personnel Services - Employee Benefits	\$332.00	
Total 1440 Alternative Regular Education Programs	\$1,105.00	

LEA : 111444602 Mifflin County SD

Printed 12/22/2021 11:35:05 AM

1441 Adjudicated / Court-Placed Programs	<u>Nonspecial Education</u>	<u>Special Education</u>
100 Personnel Services - Salaries		
100 Personnel Services - Salaries	773.00	
Total Personnel Services - Salaries	\$773.00	
200 Personnel Services - Employee Benefits		
220 Social Security Contributions	58.00	
230 PSERS Retirement Contributions	267.00	
250 Unemployment Compensation	3.00	
260 Workers' Compensation	4.00	
Total Personnel Services - Employee Benefits	\$332.00	
Total 1441 Adjudicated / Court-Placed Programs	\$1,105.00	