

LEA Name : Mifflin County SD
Address : 201 Eighth St - Highland Park
Lewistown , PA 17044

County : Mifflin
AUN Number : 111444602
LEA Type : SD

Annual Financial Report Accuracy Certification Statement

For Fiscal Year Ending
6/30/2020

Pennsylvania Department of Education
&
Office of Comptroller Operations

PDE-2056: Intermediate Unit
PDE-2057: School District, AVTS/CTC, Charter School,
and Special Program Jointure

CERTIFICATION: By signing this page I agree that the electronic data submitted is a complete and accurate statement of the financial operations and status of the local education agency for the fiscal year. It has been prepared in accordance with generally accepted accounting principles and established Commonwealth of PA reporting guidelines.

Chief School Administrator Signature

Date

Board Secretary Signature

Date

Melinda Kenepp

(717)248-0148

Ext :2517

Contact Person

Contact Person Telephone Number

mkk08@mcsdk12.org

Contact Person E-mail Address

Contact Person Fax Number

Audit Certification
Annual Financial Report:
For Fiscal Year Ending **6/30/2020**
(Pursuant to PA School Code Section 218(b))

LEA Name : Mifflin County SD
AUN Number : 111444602
County : Mifflin

Audit Certification Due: 12/31/2020

This certification is applicable to the Annual Financial Report data submitted through the Consolidated Financial Reporting System (CFRS).

CERTIFICATION: By signing this page I agree that the financial statements of the school have been properly audited as noted above pursuant to Article XXIV, and in the auditor's professional opinion, the Annual Financial Report (PDE-2057) submitted through CFRS is materially consistent with the audited financial statements.

Chief School Administrator

Board Secretary

Signature

Date

Signature

Date

Melinda Kenepf

Contact Person

mkk08@mcsdk12.org

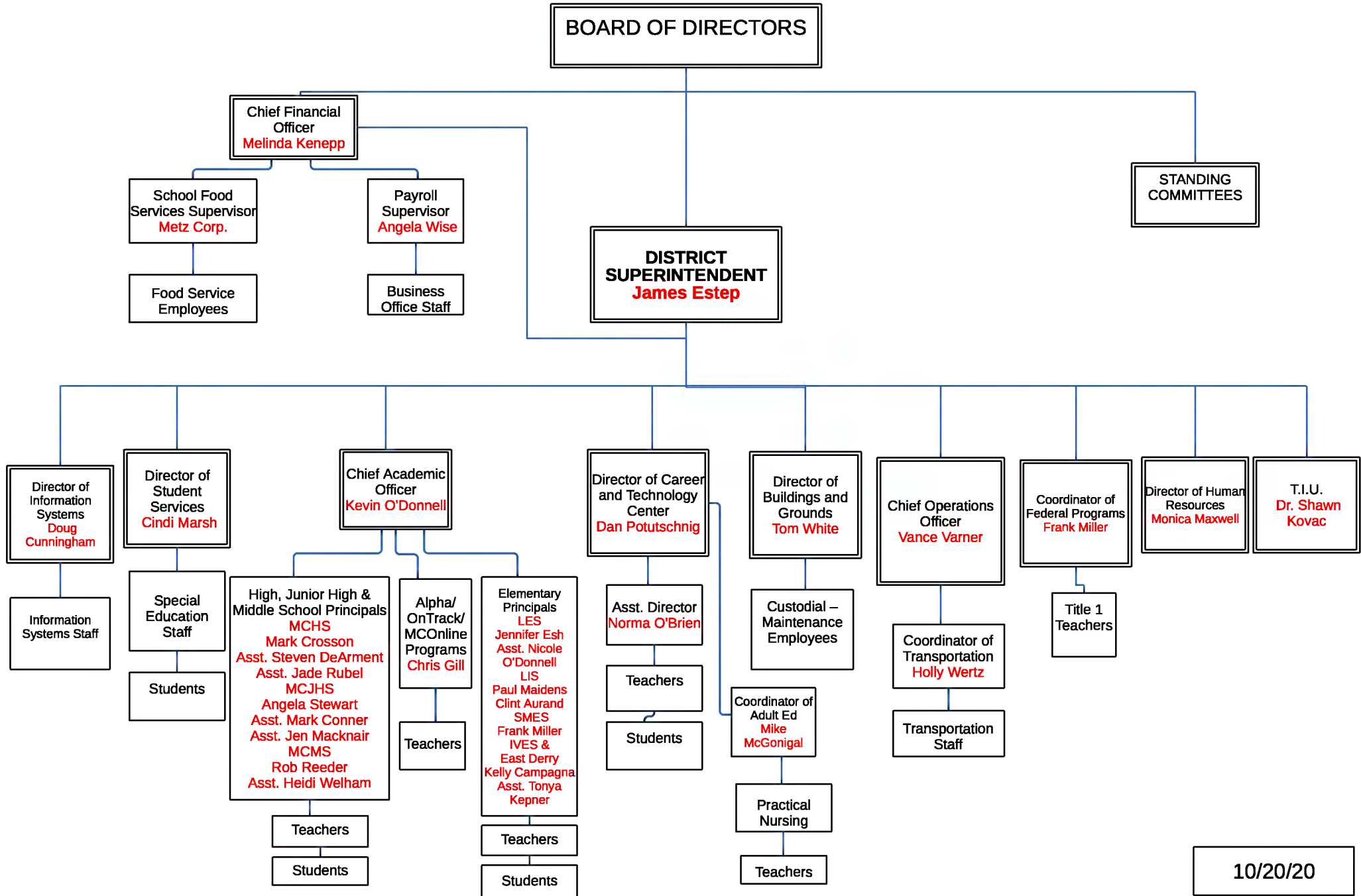
Contact Person E-mail Address

(717)248-0148 Ext :2517

Contact Person Telephone Number

Contact Person Fax Number

ADMINISTRATIVE ORGANIZATION MIFFLIN COUNTY SCHOOL DISTRICT



10/20/20



Book	Policy Manual
Section	700 Property
Title	Property Records - Equipment Definition
Number	706.2
Status	Active
Adopted	July 1, 2015

Purpose

Independent asset units shall be classified as equipment in the district's accounting records which have a per unit cost equal to or greater than \$5,000 and have an estimated useful life of one (1) year or more.

In addition to the above criteria, the item should:

1. Retain its original shape, appearance, and character with use;
2. Not lose its identity through incorporation or fabrication into a different or more complex unit or substance; and
3. Be more feasible to repair rather than replace when a failure occurs.

If an independent asset does not meet the criteria listed above, it should not be classified as a supply item.

The cost of normal maintenance and repairs that do not add to the value of the asset or materially extend assets lives are not capitalized.

Capital Assets

Buildings, building improvements, equipment, and improvements other than buildings of the school district and its component unit are depreciated using the straight-line method over the following estimated lives:[1]

<u>Assets</u>	<u>Years</u>
Buildings	15 - 40
Building improvements	5 - 30
Equipment	3 - 20
Improvements other than buildings	10 - 20

Legal 1. Pol. 622
 Pol. 706

Last Modified by Leann Shaw on April 25, 2017

<u>Val Number</u>	<u>Description</u>	<u>Justification</u>
13020	<p>REG: Interfund Trans-Out must equal REG Interfund Trans-In plus REP Interfund Trans In minus REP Interfund Trans-Out. (REG 5200 = REG 9300 + REP 9300 - REP 5200) Reference amts do not include any incoming transfers of the Fid. Funds. Include Fid. Fund incoming transfer info in the justification. Correct or enter a justification.</p> <p>Transfers Out (REG 5200): \$5,086,413.00 (REG 9300) + (REP 9300) - (REP 5200) : \$4,859,562.00</p>	\$226,851 transferred to Fiduciary Trust Fund
41150	<p>Expenditure Detail - There is an entry in account 5150-990 which should only include bond discounts. Please verify that only bond discounts are being reported within this code.</p> <p>Expenditure 5150-990, Fund 40: \$128,115.50</p>	Amount represents underwriter's discount on GOB Series 2020 issued 3/03/2020
50160	<p>SOIN: All Governmental Fund General Obligation Bonds must include an amount for Interest Paid during Fiscal Year. Correct data or enter a justification.</p>	First payment on GOB Series 2020 due 9/01/2020
50200	<p>SOIN: All Governmental Fund - Other Long Term Debt/Extended Term Fin must include an amount for Amount Due Within One Year (Principal and Interest). Correct data or enter a justification.</p>	GOB Series 2012, 2014 and 2015 were refinanced with new Series 2020 and ended with zero balance. The extended term financing - a capital lease - was paid off in July and also had a zero balance at 6/30/2020
50410	<p>SESS - 2140 Psychological Services: SESS Schedule amounts for Special Education vary from prior year by 40% or more. Correct the data or enter a justification.</p> <p>SESS Schedule 2140: \$419,743.54 Prior Year SESS Schedule 2140: \$295,806.42</p>	Additional staff was hired in the current year plus subcontracted services were added

Amounts Expressed in Whole Dollars

	<u>General Fund</u> <u>(10)</u>	<u>Student Sponsored</u> <u>Activity Fund</u> <u>(21)</u>	<u>Public Purpose Trust</u> <u>(27)</u>	<u>Other Compt Approved</u> <u>(28)</u>	<u>Athletic / Activity</u> <u>(29)</u>
Assets And Deferred Outflows Of Resources					
Assets					
0100 Cash and Cash Equivalents	16,534,984				
0110 Investments					
0120 Taxes Receivable	2,137,197				
0130 Due From Other Funds	2,466,861				
0141 Due From Other Governments	822,567				
0142 State Revenue Receivable	2,789,510				
0143 Federal Revenue Receivable	443,912				
0145 Other Intergovernmental Revenue Receivable					
0146 Due from Primary Government					
0147 Due from Component Unit					
0150 Other Receivables	1,622,014				
0170 Inventories					
0180 Prepaid Expenses (Expenditures)	13,084				
0190 Other Current Assets					
Total Assets	\$26,830,129				
0910 Deferred Outflows of Resources					
Total Assets And Deferred Outflows Of Resources	\$26,830,129				

Amounts Expressed in Whole Dollars	<u>Capital Reserve (690.</u> <u>1850)</u> <u>(31)</u>	<u>Capital Reserve (1431)</u> <u>(32)</u>	<u>Other Capital Projects</u> <u>Fund</u> <u>(39)</u>	<u>Debt Service</u> <u>(40)</u>	<u>Permanent</u> <u>(90)</u>
Assets And Deferred Outflows Of Resources					
Assets					
0100 Cash and Cash Equivalents			7,153,889	8,831	
0110 Investments					
0120 Taxes Receivable					
0130 Due From Other Funds			2,600,000		
0141 Due From Other Governments					
0142 State Revenue Receivable					
0143 Federal Revenue Receivable					
0145 Other Intergovernmental Revenue Receivable					
0146 Due from Primary Government					
0147 Due from Component Unit					
0150 Other Receivables					
0170 Inventories					
0180 Prepaid Expenses (Expenditures)					
0190 Other Current Assets					
Total Assets			\$9,753,889	\$8,831	
0910 Deferred Outflows of Resources					
Total Assets And Deferred Outflows Of Resources			\$9,753,889	\$8,831	

Amounts Expressed in Whole Dollars

Total Governmental Funds

Assets And Deferred Outflows Of Resources

Assets	
0100 Cash and Cash Equivalents	23,697,704
0110 Investments	
0120 Taxes Receivable	2,137,197
0130 Due From Other Funds	5,066,861
0141 Due From Other Governments	822,567
0142 State Revenue Receivable	2,789,510
0143 Federal Revenue Receivable	443,912
0145 Other Intergovernmental Revenue Receivable	
0146 Due from Primary Government	
0147 Due from Component Unit	
0150 Other Receivables	1,622,014
0170 Inventories	
0180 Prepaid Expenses (Expenditures)	13,084
0190 Other Current Assets	
Total Assets	\$36,592,849
0910 Deferred Outflows of Resources	
Total Assets And Deferred Outflows Of Resources	\$36,592,849

Amounts Expressed in Whole Dollars

	<u>General Fund</u> <u>(10)</u>	<u>Student Sponsored</u> <u>Activity Fund</u> <u>(21)</u>	<u>Public Purpose Trust</u> <u>(27)</u>	<u>Other Compt Approved</u> <u>(28)</u>	<u>Athletic / Activity</u> <u>(29)</u>
Liabilities And Deferred Inflows Of Resources And Fund Balances					
Liabilities					
0400 Due to Other Funds	4,865,625				
0411 Due to Other Governments					
0412 Due to Primary Government					
0413 Due to Component Unit					
0420 Accounts Payable	548,365				
0430 Contracts Payable					
0440 Current Portion of Long-Term Debt					
0450 Short-Term Payables					
0461 Accrued Salaries and Benefits	7,355,888				
0462 Payroll Deductions and Withholding	366,371				
0480 Unearned Revenues	2,456,838				
0490 Other Current Liabilities	47,081				
Total Liabilities	\$15,640,168				
0950 Deferred Inflows of Resources					
Fund Balances					
0810 Nonspendable Fund Balance	13,084				
0820 Restricted Fund Balance					
0830 Committed Fund Balance	111,760				
0840 Assigned Fund Balance	4,716,140				
0850 Unassigned Fund Balance	6,348,977				
Total Fund Balances	\$11,189,961				
Total Liabilities, Deferred Inflows Of Resources And Fund Balances	\$26,830,129				

Amounts Expressed in Whole Dollars

	<u>Capital Reserve (690.</u> <u>1850)</u> <u>(31)</u>	<u>Capital Reserve (1431)</u> <u>(32)</u>	<u>Other Capital Projects</u> <u>Fund</u> <u>(39)</u>	<u>Debt Service</u> <u>(40)</u>	<u>Permanent</u> <u>(90)</u>
Liabilities And Deferred Inflows Of Resources And Fund Balances					
Liabilities					
0400 Due to Other Funds					
0411 Due to Other Governments					
0412 Due to Primary Government					
0413 Due to Component Unit					
0420 Accounts Payable			1,119,774		
0430 Contracts Payable					
0440 Current Portion of Long-Term Debt					
0450 Short-Term Payables					
0461 Accrued Salaries and Benefits					
0462 Payroll Deductions and Withholding					
0480 Unearned Revenues					
0490 Other Current Liabilities					
Total Liabilities			\$1,119,774		
0950 Deferred Inflows of Resources					
Fund Balances					
0810 Nonspendable Fund Balance					
0820 Restricted Fund Balance					
0830 Committed Fund Balance			348,362		
0840 Assigned Fund Balance			8,285,753	8,831	
0850 Unassigned Fund Balance					
Total Fund Balances			\$8,634,115	\$8,831	
Total Liabilities, Deferred Inflows Of Resources And Fund Balances			\$9,753,889	\$8,831	

Amounts Expressed in Whole Dollars

Total Governmental Funds

Liabilities And Deferred Inflows Of Resources And Fund Balances

Liabilities

0400 Due to Other Funds	4,865,625
0411 Due to Other Governments	
0412 Due to Primary Government	
0413 Due to Component Unit	
0420 Accounts Payable	1,668,139
0430 Contracts Payable	
0440 Current Portion of Long-Term Debt	
0450 Short-Term Payables	
0461 Accrued Salaries and Benefits	7,355,888
0462 Payroll Deductions and Withholding	366,371
0480 Unearned Revenues	2,456,838
0490 Other Current Liabilities	47,081

Total Liabilities \$16,759,942

0950 Deferred Inflows of Resources

Fund Balances

0810 Nonspendable Fund Balance	13,084
0820 Restricted Fund Balance	
0830 Committed Fund Balance	460,122
0840 Assigned Fund Balance	13,010,724
0850 Unassigned Fund Balance	6,348,977

Total Fund Balances \$19,832,907

Total Liabilities, Deferred Inflows Of Resources And Fund Balances \$36,592,849

Amounts Expressed in Whole Dollars	<u>General Fund</u> <u>(10)</u>	<u>Student Sponsored</u> <u>Activity Fund</u> <u>(21)</u>	<u>Public Purpose Trust</u> <u>(27)</u>	<u>Other Compt Approved</u> <u>(28)</u>	<u>Athletic / Activity</u> <u>(29)</u>
Revenues					
6000 Revenue from Local Sources	35,800,047				
7000 Revenue from State Sources	40,904,870				
8000 Revenue from Federal Sources	3,001,036				
Total Revenues	\$79,705,953				
Expenditures					
1000 Instruction	44,521,915				
2000 Support Services	21,845,904				
3000 Operation of Non-Instructional Services	1,035,936				
4000 Facilities Acquisition, Construction and Improvement Services					
5110 Debt Service	9,153,366				
5130 Refund of Prior Year Revenues / Receipts	5,859				
Total Expenditures	\$76,562,980				
Excess (Deficiency) Of Revenues Over Expenditures	\$3,142,973				
Other Financing Sources (Uses)					
9110 Face Value of Bonds Issued					
9120 Proceeds from Refunding of Bonds					
9130 Bond Premiums					
9200 Proceeds from Extended-Term Financing					
9300 Interfund Transfers - IN	1,540,993				
9400 Sale of or Compensation for Loss of Fixed Assets					
9710 Transfers from Component Units					
9720 Transfers from Primary Governments					
9910 Other Financing Sources Not Listed in the 9000 Series					
9990 Insurance Recoveries					
5120 Debt Service – Refunded Bonds					
5150 Bond Discounts					
5200 Interfund Transfers – Out	3,545,420				
5300 Transfers Out to Component Units/Primary Governments					
Total Other Financing Sources (Uses)	(\$2,004,427)				

Amounts Expressed in Whole Dollars	<u>Capital Reserve (690.1850)</u> <u>(31)</u>	<u>Capital Reserve (1431)</u> <u>(32)</u>	<u>Other Capital Projects</u> <u>Fund</u> <u>(39)</u>	<u>Debt Service</u> <u>(40)</u>	<u>Permanent</u> <u>(90)</u>
Revenues					
6000 Revenue from Local Sources			143,893		
7000 Revenue from State Sources					
8000 Revenue from Federal Sources					
Total Revenues			\$143,893		
Expenditures					
1000 Instruction					
2000 Support Services			778,242	158,272	
3000 Operation of Non-Instructional Services					
4000 Facilities Acquisition, Construction and Improvement Services			6,701,201		
5110 Debt Service					
5130 Refund of Prior Year Revenues / Receipts					
Total Expenditures			\$7,479,443	\$158,272	
Excess (Deficiency) Of Revenues Over Expenditures			(\$7,335,550)	(\$158,272)	
Other Financing Sources (Uses)					
9110 Face Value of Bonds Issued					
9120 Proceeds from Refunding of Bonds				14,395,000	
9130 Bond Premiums				1,570,688	
9200 Proceeds from Extended-Term Financing					
9300 Interfund Transfers - IN			3,318,569		
9400 Sale of or Compensation for Loss of Fixed Assets					
9710 Transfers from Component Units					
9720 Transfers from Primary Governments					
9910 Other Financing Sources Not Listed in the 9000 Series					
9990 Insurance Recoveries					
5120 Debt Service – Refunded Bonds				15,675,622	
5150 Bond Discounts				128,116	
5200 Interfund Transfers – Out			1,540,993		
5300 Transfers Out to Component Units/Primary Governments					
Total Other Financing Sources (Uses)			\$1,777,576	\$161,950	

Amounts Expressed in Whole Dollars	<u>Total Governmental Funds</u>
Revenues	
6000 Revenue from Local Sources	35,943,940
7000 Revenue from State Sources	40,904,870
8000 Revenue from Federal Sources	3,001,036
Total Revenues	\$79,849,846
Expenditures	
1000 Instruction	44,521,915
2000 Support Services	22,782,418
3000 Operation of Non-Instructional Services	1,035,936
4000 Facilities Acquisition, Construction and Improvement Services	6,701,201
5110 Debt Service	9,153,366
5130 Refund of Prior Year Revenues / Receipts	5,859
Total Expenditures	\$84,200,695
Excess (Deficiency) Of Revenues Over Expenditures	(\$4,350,849)
Other Financing Sources (Uses)	
9110 Face Value of Bonds Issued	
9120 Proceeds from Refunding of Bonds	14,395,000
9130 Bond Premiums	1,570,688
9200 Proceeds from Extended-Term Financing	
9300 Interfund Transfers - IN	4,859,562
9400 Sale of or Compensation for Loss of Fixed Assets	
9710 Transfers from Component Units	
9720 Transfers from Primary Governments	
9910 Other Financing Sources Not Listed in the 9000 Series	
9990 Insurance Recoveries	
5120 Debt Service – Refunded Bonds	15,675,622
5150 Bond Discounts	128,116
5200 Interfund Transfers – Out	5,086,413
5300 Transfers Out to Component Units/Primary Governments	
Total Other Financing Sources (Uses)	(\$64,901)

Amounts Expressed in Whole Dollars	<u>General Fund</u> <u>(10)</u>	<u>Student Sponsored</u> <u>Activity Fund</u> <u>(21)</u>	<u>Public Purpose Trust</u> <u>(27)</u>	<u>Other Compt Approved</u> <u>(28)</u>	<u>Athletic / Activity</u> <u>(29)</u>
Special And Extraordinary Items					
9920 Special Items – Gains					
9930 Extraordinary Items – Gains					
5520 Special Items – Losses					
5530 Extraordinary Items – Losses					
Net Change In Fund Balances	\$1,138,546				
Fund Balance					
0001 Fund Balance - Beginning of Fiscal Year	10,051,415				
Fund Balance - End Of Year	\$11,189,961				

Amounts Expressed in Whole Dollars	<u>Capital Reserve (690.</u> <u>1850)</u> <u>(31)</u>	<u>Capital Reserve (1431)</u> <u>(32)</u>	<u>Other Capital Projects</u> <u>Fund</u> <u>(39)</u>	<u>Debt Service</u> <u>(40)</u>	<u>Permanent</u> <u>(90)</u>
Special And Extraordinary Items					
9920 Special Items – Gains					
9930 Extraordinary Items – Gains					
5520 Special Items – Losses					
5530 Extraordinary Items – Losses					
Net Change In Fund Balances			(\$5,557,974)	\$3,678	
Fund Balance					
0001 Fund Balance - Beginning of Fiscal Year			14,192,089	5,153	
Fund Balance - End Of Year			\$8,634,115	\$8,831	

Amounts Expressed in Whole Dollars	<u>Total Governmental Funds</u>
Special And Extraordinary Items	
9920 Special Items – Gains	
9930 Extraordinary Items – Gains	
5520 Special Items – Losses	
5530 Extraordinary Items – Losses	
Net Change In Fund Balances	(\$4,415,750)
Fund Balance	
0001 Fund Balance - Beginning of Fiscal Year	24,248,657
Fund Balance - End Of Year	\$19,832,907

Amounts Expressed in Whole Dollars	<u>Food Service</u> (51)	<u>Child Care</u> <u>Operations</u> (52)	<u>Other Enterprise</u> (58)	<u>TOTAL</u>	<u>Internal Service</u> (60)
Assets And Deferred Outflows Of Resources					
Current Assets					
0100 Cash and Cash Equivalents	94,584			94,584	
0110 Investments					
0130 Due From Other Funds					
0141 Due From Other Governments					
0142 State Revenue Receivable	52			52	
0143 Federal Revenue Receivable	1,823			1,823	
0146 Due from Primary Government					
0147 Due from Component Unit					
0150 Other Receivables	14,297			14,297	
0170 Inventories	61,788			61,788	
0180 Prepaid Expenses (Expenditures)	113			113	
0190 Other Current Assets					
Total Current Assets	\$172,657			\$172,657	
Noncurrent Assets					
0211 Land					
0212 Site Improvements (Net)					
0220 Buildings and Building Improvements (Net)					
0230 Machinery, Equipment and Furniture (Net)					
0250 Construction in Progress					
0260 Long Term Prepayments					
0290 Other Noncurrent Assets					
Total Noncurrent Assets					
0910 Deferred Outflows of Resources	154,445			154,445	
Total Assets And Deferred Outflows Of Resources	\$327,102			\$327,102	

Amounts Expressed in Whole Dollars	<u>Food Service</u> <u>(51)</u>	<u>Child Care</u> <u>Operations</u> <u>(52)</u>	<u>Other Enterprise</u> <u>(58)</u>	<u>TOTAL</u>	<u>Internal Service</u> <u>(60)</u>
Liabilities And Deferred Inflows Of Resources And Net Position					
Current Liabilities					
0400 Due to Other Funds	195,660			195,660	
0411 Due to Other Governments					
0413 Due to Component Unit					
0420 Accounts Payable	8,016			8,016	
0430 Contracts Payable					
0440 Current Portion of Long-Term Debt	489,891			489,891	
0450 Short-Term Payables					
0461 Accrued Salaries and Benefits	2,231			2,231	
0462 Payroll Deductions and Withholding					
0480 Unearned Revenues					
0490 Other Current Liabilities	55,225			55,225	
Total Current Liabilities	\$751,023			\$751,023	
Noncurrent Liabilities					
0510 Bonds Payable					
0520 Extended-Term Financing Agreements Payable					
0530 Lease-Purchase Obligations					
0540 Accumulated Compensated Absences					
0550 Authority Lease Obligations					
0560 Other Post-Employment Benefits (OPEB)					
0570 Net Pension Liability	2,483,081			2,483,081	
0599 Other Noncurrent Liabilities					
Total Noncurrent Liabilities	\$2,483,081			\$2,483,081	
Total Liabilities	\$3,234,104			\$3,234,104	
0950 Deferred Inflows of Resources	111,949			111,949	
Net Position					
0791 Net Investment in Capital Assets					
0008 Restricted Net Position (0792 – 0798)					
0799 Unrestricted Net Position	(3,018,951)			(3,018,951)	
Total Net Position	(\$3,018,951)			(\$3,018,951)	
Total Liabilities And Deferred Inflows Of Resources And Net Position	\$327,102			\$327,102	

Amounts Expressed in Whole Dollars	<u>Food Service</u> <u>(51)</u>	<u>Child Care Operations</u> <u>(52)</u>	<u>Other Enterprise</u> <u>(58)</u>	<u>TOTAL</u>	<u>Internal Service</u> <u>(60)</u>
Operating Revenues					
6600 Food Service Revenue	525,518			525,518	
0071 Charges for Services					
0072 Other Operating Revenue					
Total Operating Revenues	\$525,518			\$525,518	
Operating Expenses					
100 Personnel Services – Salaries	895,590			895,590	
200 Personnel Services – Employee Benefits	388,153			388,153	
300 Purchased Professional and Technical Services	690			690	
400 Purchased Property Services	26,649			26,649	
500 Other Purchased Services	86,639			86,639	
600 Supplies	987,146			987,146	
740 Depreciation					
810 Dues and Fees					
890 Miscellaneous Expenditures	2,173			2,173	
Total Operating Expenses	\$2,387,040			\$2,387,040	
Operating Income (Loss)	(\$1,861,522)			(\$1,861,522)	
Non Operating Revenues (Expenses)					
6500 Earnings on Investments	3,594			3,594	
6920 Contributions and Donations from Private Sources	5,302			5,302	
6930 Gains or Losses on Sale of Fixed Assets					
6991 Refunds of a Prior Year Expenditure	8,137			8,137	
7000 Revenue from State Sources	241,366			241,366	
8000 Revenue from Federal Sources	1,377,232			1,377,232	
9990 Insurance Recoveries					
820 Claims and Judgments Against the LEA					
830 Interest					
TOTAL Non Operating Revenues (Expenses)	\$1,635,631			\$1,635,631	
Income (Loss) Before Contributions And Transfers	(\$225,891)			(\$225,891)	

Amounts Expressed in Whole Dollars	<u>Food Service</u> <u>(51)</u>	<u>Child Care Operations</u> <u>(52)</u>	<u>Other Enterprise</u> <u>(58)</u>	<u>TOTAL</u>	<u>Internal Service</u> <u>(60)</u>
Contributions, Transfers, and Special and Extraordinary Items					
5200 Interfund Transfers – Out					
5300 Transfers Out to Component Units/Primary Governments					
5520 Special Items – Losses					
5530 Extraordinary Items – Losses					
9300 Interfund Transfers - IN					
9500 Capital Contributions					
9700 Transfers IN From Component Units/Primary Governments					
9920 Special Items – Gains					
9930 Extraordinary Items – Gains					
Change In Net Position	(\$225,891)			(\$225,891)	
0002 Net Position - Beginning of Fiscal Year	(2,793,060)			(2,793,060)	
0003 Accounting Changes / Residual Equity Transfers					
Net Position - End Of Year	(\$3,018,951)			(\$3,018,951)	

LEA : 111444602 Mifflin County SD

Printed 11/4/2020 1:12:16 PM

Amounts Expressed in Whole Dollars	<u>Food Service</u> (51)	<u>Child Care Operations</u> (52)	<u>Other Enterprise</u> (58)	<u>TOTAL</u>	<u>Internal Service(60)</u>
Cash Flows From Operating Activities					
0011 Cash Receipts From Users	540,267			540,267	
0012 Cash Receipts From Assessments Made to Other Funds					
0013 Cash Receipts From Earnings on Investments					
0014 Cash Receipts From Other Operating Revenue					
0015 Cash Payments To Employees For Services	1,418,546			1,418,546	
0016 Cash Payments For Insurance Claims					
0017 Cash Payments To Suppliers For Goods and Services	1,142,918			1,142,918	
0018 Cash Payments For Other Operating Expenses					
Net Cash Provided By (Used For) Operating Activities	(\$2,021,197)			(\$2,021,197)	
Cash Flows From Non-Capital Financing Activities					
0021 Receipts From Local Sources - 6000	5,302			5,302	
0022 Receipts From State Sources - 7000	241,314			241,314	
0023 Receipts From Federal Sources -8000	1,375,409			1,375,409	
0024 Notes and Loans Received (Repaid)					
0025 Interest Paid on Notes/Loans - 5100-830					
0026 Operating Transfers In (Out)/Residual Equity Trans					
0027 Operating Transfers In (Out) Primary Government / Comp Unit					
0028 Receipts From Refund of Prior Year Expenditures - 6991	8,137			8,137	
0029 Special and Extraordinary Gains (losses)					
0030 Receipts from Insurance Recoveries -9990					
Net Cash Prov By (Used for) Non-Capital Financing Activities	\$1,630,162			\$1,630,162	
Cash Flows From Capital and Related Financing Activities					
0031 Payments For Fac Acq, Const, and Imp - 4000					
0032 Gain / (Loss) on Sale of Fixed Assets - 6930					
0033 Proceeds From Extended Term Financing - 9200					
0034 Principal Paid on Financing Agreements					
0035 Interest Paid on Financing Agreements - 5100-830					
0036 (Inc) Dec in Contributed Capital					
Net Cash Prov By (Used for) Capital and Related Financing Activities					
Cash Flows From Investing Activities					
0041 Earnings on Investments - 6500	3,594			3,594	
0042 Purchase of Inv Securities / Deposits to Inv Pools					
0043 Receipts From Investment Pool Withdrawals					
0044 Proceeds from Sale and Maturity of Inv Securities					

LEA : 111444602 Mifflin County SD

Printed 11/4/2020 1:12:16 PM

0045 Loans Received (Paid)

Net Cash Prov By (Used for) Investing Activities	\$3,594	\$3,594
---	----------------	----------------

LEA : 111444602 Mifflin County SD

Printed 11/4/2020 1:12:16 PM

	<u>Food Service</u> <u>(51)</u>	<u>Child Care Operations</u> <u>(52)</u>	<u>Other Enterprise</u> <u>(58)</u>	<u>TOTAL</u>	<u>Internal Service</u> <u>(60)</u>
Net Increase (Decrease) in Cash Flows	(387,441)			(387,441)	
0004 Cash and Cash Equivalents Beginning of Year	482,025			482,025	
Cash and Cash Equivalents at Year End	\$94,584			\$94,584	
<hr/>					
Reconciliation of Operating Income (Loss) To Net Cash Provided by (Used For) Operating Activities					
0005 Operating Income (Loss) per REP	(1,861,522)			(1,861,522)	
Adjustments					
0051 Depreciation and Net Amortization					
0052 Provision for Uncollectible Accounts					
0053 Other Adjustments					
Effect of Changes in Assets, Liabilities, Deferred Outflows and Deferred Inflows					
0054 (Inc) Dec In Accounts Receivable (0120-0150)	(14,297)			(14,297)	
0055 Advances to Other Funds (0160)	117,555			117,555	
0056 (Inc) Dec in Inventories (0170)	(46,560)			(46,560)	
0057 (Inc) Dec in Prepaid Expenses (0180)	25			25	
0058 (Inc) Dec in Other Current or Noncurrent Assets					
0064 Deferred Outflows (0910)	2,330			2,330	
0059 Inc (Dec) in Accounts Payable (0400-0450)	8,016			8,016	
0060 Inc (Dec) in Accrued Salaries/Benefits (0461)	(628)			(628)	
0065 Inc (Dec) in Net Pension Liabilities (0570)	(255,911)			(255,911)	
0066 Inc (Dec) in Other Postemp Benefit Oblig (0560)	(22,299)			(22,299)	
0061 Inc (Dec) in Payroll Deductions/Withholding (0462)					
0062 Inc (Dec) in Unearned Revenue (0480)	23,393			23,393	
0063 Inc (Dec) in Other Current or Noncurrent Liabilities	(5,448)			(5,448)	
0067 Deferred Inflows (0950)	34,149			34,149	
Total Adjustments	(\$159,675)			(\$159,675)	
Cash Provided By (Used for) Total	(\$2,021,197)			(\$2,021,197)	

COMBINED STATEMENT OF CASH FLOWS
SCHEDULE OF NONCASH INVESTING, CAPITAL, AND FINANCING ACTIVITIES

Explanation of Transaction and Balance Sheet Effect	Amount
Total	

LEA : 111444602 Mifflin County SD

Printed 11/4/2020 1:12:20 PM

Amounts Expressed in Whole Dollars

	<u>Private Purpose Trust</u> <u>(71)</u>	<u>Investment Trust</u> <u>(72)</u>	<u>Pension Trust</u> <u>(73)</u>	<u>Student Activity Custodial</u> <u>(81)</u>
Assets And Deferred Outflows Of Resources				
Assets				
0100 Cash and Cash Equivalents	167,866			254,471
0110 Investments				
0130 Due From Other Funds				
0140 Due from Other Governments, Primary Government and Component Units				
0150 Other Receivables				
0170 Inventories				
0180 Prepaid Expenses (Expenditures)				
0190 Other Current Assets				
0220 Buildings and Building Improvements (Net)				
0230 Machinery, Equipment and Furniture (Net)				
Total Assets	\$167,866			\$254,471
0910 Deferred Outflows of Resources				
Total Assets And Deferred Outflows Of Resources	\$167,866			\$254,471

LEA : 111444602 Mifflin County SD

Printed 11/4/2020 1:12:20 PM

Amounts Expressed in Whole Dollars

Other Custodial
(89)

Fiduciary Component Units
(98)

Total Fiduciary Funds

Assets And Deferred Outflows Of Resources

Assets

0100 Cash and Cash Equivalents			422,337
0110 Investments			
0130 Due From Other Funds			
0140 Due from Other Governments, Primary Government and Component Units			
0150 Other Receivables			
0170 Inventories			
0180 Prepaid Expenses (Expenditures)			
0190 Other Current Assets			
0220 Buildings and Building Improvements (Net)			
0230 Machinery, Equipment and Furniture (Net)			

Total Assets **\$422,337**

0910 Deferred Outflows of Resources

Total Assets And Deferred Outflows Of Resources **\$422,337**

LEA : 111444602 Mifflin County SD

Printed 11/4/2020 1:12:20 PM

Amounts Expressed in Whole Dollars

Private Purpose Trust
(71)

Investment Trust
(72)

Pension Trust
(73)

Student Activity Custodial
(81)

Liabilities, Deferred Inflows Of Resources And Net Position

Liabilities				
0400 Due to Other Funds				116
0410 Due to Other Governments, Primary Government and Component Units				
0420 Accounts Payable				
0430 Contracts Payable				
0450 Short-Term Payables				
0460 Payroll Accruals and Withholdings				
0480 Unearned Revenues				
0490 Other Current Liabilities				254,355
Total Liabilities				\$254,471
0950 Deferred Inflows of Resources				
Net Position				
0791 Net Investment in Capital Assets				
0009 Restricted Net Position (0792 – 0798)	167,866			
0799 Unrestricted Net Position				
Total Net Position	\$167,866			
Total Liabilities, Deferred Inflows Of Resources And Net Position	\$167,866			\$254,471

LEA : 111444602 Mifflin County SD

Printed 11/4/2020 1:12:20 PM

Amounts Expressed in Whole Dollars

Other Custodial
(89)

Fiduciary Component Units
(98)

Total Fiduciary Funds

Liabilities, Deferred Inflows Of Resources And Net Position

Liabilities		
0400	Due to Other Funds	116
0410	Due to Other Governments, Primary Government and Component Units	
0420	Accounts Payable	
0430	Contracts Payable	
0450	Short-Term Payables	
0460	Payroll Accruals and Withholdings	
0480	Unearned Revenues	
0490	Other Current Liabilities	254,355
Total Liabilities		\$254,471
0950	Deferred Inflows of Resources	
Net Position		
0791	Net Investment in Capital Assets	
0009	Restricted Net Position (0792 – 0798)	167,866
0799	Unrestricted Net Position	
Total Net Position		\$167,866
Total Liabilities, Deferred Inflows Of Resources And Net Position		\$422,337

Amounts Expressed in Whole Dollars	<u>Private Purpose Trust</u> (71)	<u>Investment Trust</u> (72)	<u>Pension Trust</u> (73)	<u>Student Activity</u> <u>Custodial</u> (81)	<u>Other Custodial</u> (89)	<u>Fiduciary Component</u> <u>Units</u> (98)
Additions						
0091 Gifts and Contributions	31,729					
0095 Net Investment Earnings	186					
0092 Other Additions	226,851					
Deductions						
0093 Scholarships Awarded	90,900					
0094 Other Deductions						
Change In Net Position	\$167,866					
0006 Net Position – Beginning of Fiscal Year						
0007 Net Position Held in Trust for Pension Benefits						
Net Position - End of Fiscal Year	\$167,866					

Amounts Expressed in Whole Dollars	<u>Total Fiduciary Funds</u>
Additions	
0091 Gifts and Contributions	31,729
0095 Net Investment Earnings	186
0092 Other Additions	226,851
Deductions	
0093 Scholarships Awarded	90,900
0094 Other Deductions	
Change In Net Position	\$167,866
0006 Net Position – Beginning of Fiscal Year	
0007 Net Position Held in Trust for Pension Benefits	
Net Position - End of Fiscal Year	\$167,866

	<u>Revenue Reported In Current Year</u>	<u>Current Year Tax Accrual</u>	<u>Prior Year Tax Accrual</u>	<u>Taxes Collected In Current Year</u>
<u>Revenue from Local Sources</u>				
6111 Current Real Estate Taxes	24,377,887.19			24,377,887.19
6112 Interim Real Estate Taxes	204,092.92			204,092.92
6113 Public Utility Realty Taxes	29,862.78			29,862.78
6114 Payments in Lieu of Current Taxes - State / Local	334,392.02			334,392.02
6120 Current Per Capita Taxes, Section 679	103,693.60			103,693.60
6141 Current Act 511 Per Capita Taxes	104,245.49			104,245.49
6143 Current Act 511 Local Services Taxes	77,789.60			77,789.60
6151 Current Act 511 Earned Income Taxes	6,952,596.48			6,952,596.48
6153 Current Act 511 Real Estate Transfer Taxes	485,962.02			485,962.02
6411 Delinquent Real Estate Taxes	1,849,070.48			1,849,070.48
6420 Delinquent Per Capita Taxes, Section 679	4,563.72			4,563.72
6440 Delinquent Local Enabling Taxes - Flat Rate Assessments	4,574.67			4,574.67
6500 Earnings on Investments	235,099.20			
6700 Revenues from LEA Activities	82,130.56			
6832 Federal IDEA Revenue Received as Pass Through	761,582.00			
6839 Federal Revenue Received from Other Sources	9,500.00			
6910 Rentals	2,740.00			
6920 Contributions and Donations from Private Sources	10,853.58			
6944 Receipts from Other LEAs in Pennsylvania - Education	22,812.00			
6961 Transportation Services Provided Other Pennsylvania LEAs	9,375.68			
6969 All Other Services Provided Other Governments	39,125.00			
6999 Other Revenues Not Specified Above	98,098.24			
TOTAL Revenue from Local Sources	\$35,800,047.23			\$34,528,730.97

**Revenue Reported
In Current Year**

Revenue from State Sources

7111 Basic Education Funding-Formula	21,567,768.79
7112 Basic Education Funding-Social Security	1,232,699.74
7160 Tuition for Orphans Subsidy	191,835.10
7271 Special Education funds for School-Aged Pupils	3,574,547.07
7311 Pupil Transportation Subsidy	3,572,418.81
7312 Nonpublic and Charter School Pupil Transportation Subsidy	169,785.00
7320 Rental and Sinking Fund Payments / Building Reimbursement Subsidy	1,110,564.02
7330 Health Services (Medical, Dental, Nurse, Act 25)	98,107.40
7340 State Property Tax Reduction Allocation	1,920,848.85
7361 School Safety and Security Grants	267,025.10
7505 Ready to Learn Block Grant	968,914.00
7506 PAsmart Grants	35,000.00
7599 Other State Revenue Not Listed Elsewhere in the 7000 Series	24,500.00
7820 State Share of Retirement Contributions	6,170,856.20
TOTAL Revenue from State Sources	\$40,904,870.08

**Revenue Reported
In Current Year**

Revenue from Federal Sources

8514 NCLB, Title I - Improving the Academic Achievement of the Disadvantaged	2,220,337.29
8515 NCLB, Title II - Preparing, Training and Recruiting High Quality Teachers and Principals	296,331.51
8516 NCLB, Title III - Language Instruction for Limited English Proficient and Immigrant Students	10,960.00
8517 NCLB, Title IV - 21St Century Schools	158,546.03
8519 NCLB, Title VI - Flexibility and Accountability	93,543.26
8741 Elementary and Secondary School Emergency Relief Fund (ESSER)	13,592.03
8749 Other CARES Act Funding	33,820.80
8810 School-Based Access Medicaid Reimbursement Program (SBAP) Reimbursements (Access)	149,535.07
8820 Medical Assistance Reimbursement for Administrative Claiming (Quarterly) Program	24,369.61
TOTAL Revenue from Federal Sources	\$3,001,035.60

	<u>Revenue Reported In Current Year</u>	
<u>Other Financing Sources</u>		
9330 Capital Projects Fund Transfers	1,540,993.06	
TOTAL Other Financing Sources	\$1,540,993.06	
TOTAL FROM ALL SOURCES	\$81,246,945.97	\$34,528,730.97

LEA : 111444602 Mifflin County SD

Printed 11/4/2020 1:12:31 PM

	<u>General Fund (10)</u>	<u>Student Sponsored Activity Fund (21)</u>	<u>Public Purpose Trust (27)</u>	<u>Other Compt Approved (28)</u>	<u>Athletic / Activity (29)</u>	<u>Capital Reserve (690, 1850) (31)</u>
6000 Revenue from Local Sources						
6111 Current Real Estate Taxes	24,377,887.19					
6112 Interim Real Estate Taxes	204,092.92					
6113 Public Utility Realty Taxes	29,862.78					
6114 Payments in Lieu of Current Taxes - State / Local	334,392.02					
6120 Current Per Capita Taxes, Section 679	103,693.60					
6141 Current Act 511 Per Capita Taxes	104,245.49					
6143 Current Act 511 Local Services Taxes	77,789.60					
6151 Current Act 511 Earned Income Taxes	6,952,596.48					
6153 Current Act 511 Real Estate Transfer Taxes	485,962.02					
6411 Delinquent Real Estate Taxes	1,849,070.48					
6420 Delinquent Per Capita Taxes, Section 679	4,563.72					
6440 Delinquent Local Enabling Taxes - Flat Rate Assessments	4,574.67					
6500 Earnings on Investments	235,099.20					
6700 Revenues from LEA Activities	82,130.56					
6832 Federal IDEA Revenue Received as Pass Through	761,582.00					
6839 Federal Revenue Received from Other Sources	9,500.00					
6910 Rentals	2,740.00					
6920 Contributions and Donations from Private Sources	10,853.58					
6944 Receipts from Other LEAs in Pennsylvania - Education	22,812.00					
6961 Transportation Services Provided Other Pennsylvania LEAs	9,375.68					
6969 All Other Services Provided Other Governments	39,125.00					
6999 Other Revenues Not Specified Above	98,098.24					
6000 Total Revenue from Local Sources	\$35,800,047.23					
7000 Revenue from State Sources						
7111 Basic Education Funding-Formula	21,567,768.79					
7112 Basic Education Funding-Social Security	1,232,699.74					
7160 Tuition for Orphans Subsidy	191,835.10					
7271 Special Education funds for School-Aged Pupils	3,574,547.07					
7311 Pupil Transportation Subsidy	3,572,418.81					
7312 Nonpublic and Charter School Pupil Transportation Subsidy	169,785.00					
7320 Rental and Sinking Fund Payments / Building Reimbursement Subsidy	1,110,564.02					
7330 Health Services (Medical, Dental, Nurse, Act 25)	98,107.40					
7340 State Property Tax Reduction Allocation	1,920,848.85					
7361 School Safety and Security Grants	267,025.10					
7505 Ready to Learn Block Grant	968,914.00					

LEA : 111444602 Mifflin County SD

Printed 11/4/2020 1:12:31 PM

	<u>Capital Reserve</u> <u>(1431) (32)</u>	<u>Other Capital</u> <u>Projects Fund (39)</u>	<u>Debt Service (40)</u>	<u>Permanent (90)</u>	<u>Total</u>
6000 Revenue from Local Sources					
6111 Current Real Estate Taxes					24,377,887.19
6112 Interim Real Estate Taxes					204,092.92
6113 Public Utility Realty Taxes					29,862.78
6114 Payments in Lieu of Current Taxes - State / Local					334,392.02
6120 Current Per Capita Taxes, Section 679					103,693.60
6141 Current Act 511 Per Capita Taxes					104,245.49
6143 Current Act 511 Local Services Taxes					77,789.60
6151 Current Act 511 Earned Income Taxes					6,952,596.48
6153 Current Act 511 Real Estate Transfer Taxes					485,962.02
6411 Delinquent Real Estate Taxes					1,849,070.48
6420 Delinquent Per Capita Taxes, Section 679					4,563.72
6440 Delinquent Local Enabling Taxes - Flat Rate Assessments					4,574.67
6500 Earnings on Investments		143,893.24			378,992.44
6700 Revenues from LEA Activities					82,130.56
6832 Federal IDEA Revenue Received as Pass Through					761,582.00
6839 Federal Revenue Received from Other Sources					9,500.00
6910 Rentals					2,740.00
6920 Contributions and Donations from Private Sources					10,853.58
6944 Receipts from Other LEAs in Pennsylvania - Education					22,812.00
6961 Transportation Services Provided Other Pennsylvania LEAs					9,375.68
6969 All Other Services Provided Other Governments					39,125.00
6999 Other Revenues Not Specified Above					98,098.24
6000 Total Revenue from Local Sources		\$143,893.24			\$35,943,940.47
7000 Revenue from State Sources					
7111 Basic Education Funding-Formula					21,567,768.79
7112 Basic Education Funding-Social Security					1,232,699.74
7160 Tuition for Orphans Subsidy					191,835.10
7271 Special Education funds for School-Aged Pupils					3,574,547.07
7311 Pupil Transportation Subsidy					3,572,418.81
7312 Nonpublic and Charter School Pupil Transportation Subsidy					169,785.00
7320 Rental and Sinking Fund Payments / Building Reimbursement Subsidy					1,110,564.02
7330 Health Services (Medical, Dental, Nurse, Act 25)					98,107.40
7340 State Property Tax Reduction Allocation					1,920,848.85
7361 School Safety and Security Grants					267,025.10
7505 Ready to Learn Block Grant					968,914.00

LEA : 111444602 Mifflin County SD

Printed 11/4/2020 1:12:31 PM

	<u>General Fund (10)</u>	<u>Student Sponsored Activity Fund (21)</u>	<u>Public Purpose Trust (27)</u>	<u>Other Compt Approved (28)</u>	<u>Athletic / Activity (29)</u>	<u>Capital Reserve (690.1850) (31)</u>
7000 Revenue from State Sources						
7506 PAsmart Grants	35,000.00					
7599 Other State Revenue Not Listed Elsewhere in the 7000 Series	24,500.00					
7820 State Share of Retirement Contributions	6,170,856.20					
7000 Total Revenue from State Sources	\$40,904,870.08					
8000 Revenue from Federal Sources						
8514 NCLB, Title I - Improving the Academic Achievement of the Disadvantaged	2,220,337.29					
8515 NCLB, Title II - Preparing, Training and Recruiting High Quality Teachers and Principals	296,331.51					
8516 NCLB, Title III - Language Instruction for Limited English Proficient and Immigrant Students	10,960.00					
8517 NCLB, Title IV - 21st Century Schools	158,546.03					
8519 NCLB, Title VI - Flexibility and Accountability	93,543.26					
8741 Elementary and Secondary School Emergency Relief Fund (ESSER)	13,592.03					
8749 Other CARES Act Funding	33,820.80					
8810 School-Based Access Medicaid Reimbursement Program (SBAP) Reimbursements (Access)	149,535.07					
8820 Medical Assistance Reimbursement for Administrative Claiming (Quarterly) Program	24,369.61					
8000 Total Revenue from Federal Sources	\$3,001,035.60					
9000 Other Financing Sources						
9120 Proceeds from Refunding of Bonds						
9130 Bond Premiums						
9310 General Fund Transfers						
9330 Capital Projects Fund Transfers	1,540,993.06					
9000 Total Other Financing Sources	\$1,540,993.06					
Total From All Sources	\$81,246,945.97					

LEA : 111444602 Mifflin County SD

Printed 11/4/2020 1:12:31 PM

	<u>Capital Reserve</u> <u>(1431) (32)</u>	<u>Other Capital</u> <u>Projects Fund (39)</u>	<u>Debt Service (40)</u>	<u>Permanent (90)</u>	<u>Total</u>
7000 Revenue from State Sources					
7506 PAsmart Grants					35,000.00
7599 Other State Revenue Not Listed Elsewhere in the 7000 Series					24,500.00
7820 State Share of Retirement Contributions					6,170,856.20
7000 Total Revenue from State Sources					\$40,904,870.08
8000 Revenue from Federal Sources					
8514 NCLB, Title I - Improving the Academic Achievement of the Disadvantaged					2,220,337.29
8515 NCLB, Title II - Preparing, Training and Recruiting High Quality Teachers and Principals					296,331.51
8516 NCLB, Title III - Language Instruction for Limited English Proficient and Immigrant Students					10,960.00
8517 NCLB, Title IV - 21st Century Schools					158,546.03
8519 NCLB, Title VI - Flexibility and Accountability					93,543.26
8741 Elementary and Secondary School Emergency Relief Fund (ESSER)					13,592.03
8749 Other CARES Act Funding					33,820.80
8810 School-Based Access Medicaid Reimbursement Program (SBAP) Reimbursements (Access)					149,535.07
8820 Medical Assistance Reimbursement for Administrative Claiming (Quarterly) Program					24,369.61
8000 Total Revenue from Federal Sources					\$3,001,035.60
9000 Other Financing Sources					
9120 Proceeds from Refunding of Bonds			14,395,000.00		14,395,000.00
9130 Bond Premiums			1,570,687.90		1,570,687.90
9310 General Fund Transfers		3,318,568.64			3,318,568.64
9330 Capital Projects Fund Transfers					1,540,993.06
9000 Total Other Financing Sources		\$3,318,568.64	\$15,965,687.90		\$20,825,249.60
Total From All Sources		\$3,462,461.88	\$15,965,687.90		\$100,675,095.75

	<u>General Fund (10)</u>	<u>Student Sponsored Activity Fund (21)</u>	<u>Public Purpose Trust (27)</u>	<u>Other Compt Approved (28)</u>	<u>Athletic / Activity (29)</u>	<u>Capital Reserve (690, 1850) (31)</u>
Revenue from Local Sources	35,800,047.23					
Revenue from State Sources	40,904,870.08					
Revenue from Federal Sources	3,001,035.60					
Other Financing Sources	1,540,993.06					
Total From All Sources	\$81,246,945.97					

	<u>Capital Reserve (1431)</u> <u>(32)</u>	<u>Other Capital Projects</u> <u>Fund (39)</u>	<u>Debt Service (40)</u>	<u>Permanent (90)</u>	<u>Total</u>
Revenue from Local Sources		143,893.24			35,943,940.47
Revenue from State Sources					40,904,870.08
Revenue from Federal Sources					3,001,035.60
Other Financing Sources		3,318,568.64	15,965,687.90		20,825,249.60
Total From All Sources		\$3,462,461.88	\$15,965,687.90		\$100,675,095.75

General Fund (10)

	<u>Total</u>
1000 Instruction	
100 Personnel Services – Salaries	
100 Personnel Services – Salaries	21,111,886.23
Total Personnel Services – Salaries	\$21,111,886.23
200 Personnel Services – Employee Benefits	
210 Group Insurance – Contracted Provider	6,498,198.98
220 Social Security Contributions	1,576,513.09
230 PSERS Retirement Contributions	7,191,561.38
250 Unemployment Compensation	54,211.02
260 Workers' Compensation	110,084.80
291 Other Retirement Plans	114,242.89
Total Personnel Services – Employee Benefits	\$15,544,812.16
300 Purchased Professional and Technical Services	
322 Professional Educational Services – Ius	71,836.25
323 Professional Educational Services – Other Educational Agencies	22,968.75
329 Professional Educational Services – Other	699,176.12
330 Other Professional Services	934.00
Total Purchased Professional and Technical Services	\$794,915.12
400 Purchased Property Services	
430 Repairs and Maintenance Services	155,302.72
440 Rentals	193,927.80
Total Purchased Property Services	\$349,230.52
500 Other Purchased Services	
510 Student Transportation Services	25,174.89
530 Communications	106,140.44
550 Printing and Binding	7,155.44
561 Tuition To Other School Districts Within the State	1,078,997.95
562 Tuition To Pennsylvania Charter Schools	2,036,301.22
564 Tuition To Career and Technology Centers	1,904,745.00
568 Tuition To Private Residential Rehabilitative Institutions (PRRI) [In-State] and Detention Centers	119,555.20
580 Travel	7,290.05
594 IU Payment By Withholding for Institutionalized Children's Programs – Special Classes	967.94
Total Other Purchased Services	\$5,286,328.13
600 Supplies	
610 General Supplies	760,701.26
640 Books and Periodicals	652,088.67
650 Supplies & Fees – Technology Related	9,500.00
Total Supplies	\$1,422,289.93
700 Property	
768 Capitalized Technology Software - Replacement	11,441.00
Total Property	\$11,441.00
800 Other Objects	

LEA : 111444602 Mifflin County SD

Printed 11/4/2020 1:12:41 PM

General Fund (10)		
1000 Instruction		<u>Total</u>
800 <u>Other Objects</u>		
810 Dues and Fees		1,012.00
Total Other Objects		\$1,012.00
Total 1000 Instruction		\$44,521,915.09

General Fund (10)

	<u>Elementary</u>	<u>Secondary</u>	<u>Federal</u>	<u>Total</u>
1100 Regular Programs – Elementary / Secondary				
100 Personnel Services – Salaries				
100 Personnel Services – Salaries	7,075,252.42	5,980,804.87	1,369,617.32	14,425,674.61
Total Personnel Services – Salaries	\$7,075,252.42	\$5,980,804.87	\$1,369,617.32	\$14,425,674.61
200 Personnel Services – Employee Benefits				
210 Group Insurance – Contracted Provider	2,128,562.58	1,709,309.33	426,843.20	4,264,715.11
220 Social Security Contributions	506,468.55	469,342.17	101,933.60	1,077,744.32
230 PSERS Retirement Contributions	2,304,969.22	2,411,289.45	233,902.53	4,950,161.20
250 Unemployment Compensation	14,155.03	23,946.46	2,735.69	40,837.18
260 Workers' Compensation	37,057.52	31,318.94	7,161.13	75,537.59
291 Other Retirement Plans	57,069.72	27,520.95		84,590.67
Total Personnel Services – Employee Benefits	\$5,048,282.62	\$4,672,727.30	\$772,576.15	\$10,493,586.07
300 Purchased Professional and Technical Services				
323 Professional Educational Services – Other Educational Agencies		22,968.75		22,968.75
329 Professional Educational Services – Other	194,299.16	158,688.12	86,911.41	439,898.69
Total Purchased Professional and Technical Services	\$194,299.16	\$181,656.87	\$86,911.41	\$462,867.44
400 Purchased Property Services				
430 Repairs and Maintenance Services	54,755.81	56,808.46		111,564.27
440 Rentals	116,616.90	77,310.90		193,927.80
Total Purchased Property Services	\$171,372.71	\$134,119.36		\$305,492.07
500 Other Purchased Services				
510 Student Transportation Services	24,471.88	590.91		25,062.79
530 Communications	53,453.54	51,371.16		104,824.70
550 Printing and Binding	2,437.29	4,718.15		7,155.44
561 Tuition To Other School Districts Within the State		243,650.61		243,650.61
562 Tuition To Pennsylvania Charter Schools		1,269,704.48		1,269,704.48
580 Travel	2,201.98	889.14		3,091.12
Total Other Purchased Services	\$82,564.69	\$1,570,924.45		\$1,653,489.14
600 Supplies				
610 General Supplies	336,365.71	187,044.13	58,734.71	582,144.55
640 Books and Periodicals	227,407.01	190,043.24		417,450.25
650 Supplies & Fees – Technology Related			9,500.00	9,500.00
Total Supplies	\$563,772.72	\$377,087.37	\$68,234.71	\$1,009,094.80
700 Property				
768 Capitalized Technology Software - Replacement		11,441.00		11,441.00
Total Property		\$11,441.00		\$11,441.00
Total 1100 Regular Programs – Elementary / Secondary	\$13,135,544.32	\$12,928,761.22	\$2,297,339.59	\$28,361,645.13

LEA : 111444602 Mifflin County SD

Printed 11/4/2020 1:12:41 PM

General Fund (10)

	<u>Elementary</u>	<u>Secondary</u>	<u>Federal</u>	<u>Total</u>
1110 Regular Programs				
100 Personnel Services – Salaries				
100 Personnel Services – Salaries	7,075,252.42	5,980,804.87	57.75	13,056,115.04
Total Personnel Services – Salaries	\$7,075,252.42	\$5,980,804.87	\$57.75	\$13,056,115.04
200 Personnel Services – Employee Benefits				
210 Group Insurance – Contracted Provider	2,128,562.58	1,709,309.33		3,837,871.91
220 Social Security Contributions	506,468.55	469,342.17	2.21	975,812.93
230 PSERS Retirement Contributions	2,304,969.22	2,411,289.45	9.90	4,716,268.57
250 Unemployment Compensation	14,155.03	23,946.46	0.12	38,101.61
260 Workers' Compensation	37,057.52	31,318.94	0.29	68,376.75
291 Other Retirement Plans	57,069.72	27,520.95		84,590.67
Total Personnel Services – Employee Benefits	\$5,048,282.62	\$4,672,727.30	\$12.52	\$9,721,022.44
300 Purchased Professional and Technical Services				
323 Professional Educational Services – Other Educational Agencies		22,968.75		22,968.75
329 Professional Educational Services – Other	194,299.16	158,688.12		352,987.28
Total Purchased Professional and Technical Services	\$194,299.16	\$181,656.87		\$375,956.03
400 Purchased Property Services				
430 Repairs and Maintenance Services	54,755.81	56,808.46		111,564.27
440 Rentals	116,616.90	77,310.90		193,927.80
Total Purchased Property Services	\$171,372.71	\$134,119.36		\$305,492.07
500 Other Purchased Services				
510 Student Transportation Services	24,471.88	590.91		25,062.79
530 Communications	53,453.54	51,371.16		104,824.70
550 Printing and Binding	2,437.29	4,718.15		7,155.44
561 Tuition To Other School Districts Within the State		243,650.61		243,650.61
562 Tuition To Pennsylvania Charter Schools		1,269,704.48		1,269,704.48
580 Travel	2,201.98	889.14		3,091.12
Total Other Purchased Services	\$82,564.69	\$1,570,924.45		\$1,653,489.14
600 Supplies				
610 General Supplies	336,365.71	187,044.13	4,600.44	528,010.28
640 Books and Periodicals	227,407.01	190,043.24		417,450.25
650 Supplies & Fees – Technology Related			9,500.00	9,500.00
Total Supplies	\$563,772.72	\$377,087.37	\$14,100.44	\$954,960.53
700 Property				
768 Capitalized Technology Software - Replacement		11,441.00		11,441.00
Total Property		\$11,441.00		\$11,441.00
Total 1110 Regular Programs	\$13,135,544.32	\$12,928,761.22	\$14,170.71	\$26,078,476.25

General Fund (10)

1190 Federally-Funded Regular Programs

	<u>Elementary</u>	<u>Secondary</u>	<u>Federal</u>	<u>Total</u>
100 Personnel Services – Salaries				
100 Personnel Services – Salaries			1,369,559.57	1,369,559.57
Total Personnel Services – Salaries			\$1,369,559.57	\$1,369,559.57
200 Personnel Services – Employee Benefits				
210 Group Insurance – Contracted Provider			426,843.20	426,843.20
220 Social Security Contributions			101,931.39	101,931.39
230 PSERS Retirement Contributions			233,892.63	233,892.63
250 Unemployment Compensation			2,735.57	2,735.57
260 Workers' Compensation			7,160.84	7,160.84
Total Personnel Services – Employee Benefits			\$772,563.63	\$772,563.63
300 Purchased Professional and Technical Services				
329 Professional Educational Services – Other			86,911.41	86,911.41
Total Purchased Professional and Technical Services			\$86,911.41	\$86,911.41
600 Supplies				
610 General Supplies			54,134.27	54,134.27
Total Supplies			\$54,134.27	\$54,134.27
Total 1190 Federally-Funded Regular Programs			\$2,283,168.88	\$2,283,168.88

General Fund (10)

	<u>Elementary</u>	<u>Secondary</u>	<u>Federal</u>	<u>Total</u>
1200 Special Programs – Elementary / Secondary				
100 Personnel Services – Salaries				
100 Personnel Services – Salaries	2,859,821.61	2,036,450.79	467,447.54	5,363,719.94
Total Personnel Services – Salaries	\$2,859,821.61	\$2,036,450.79	\$467,447.54	\$5,363,719.94
200 Personnel Services – Employee Benefits				
210 Group Insurance – Contracted Provider	877,062.22	689,484.32	240,977.90	1,807,524.44
220 Social Security Contributions	214,426.61	151,387.47	34,858.22	400,672.30
230 PSERS Retirement Contributions	966,052.84	755,335.77	77,667.01	1,799,055.62
250 Unemployment Compensation	5,719.65	4,073.80	935.39	10,728.84
260 Workers' Compensation	14,771.48	10,511.62	2,364.22	27,647.32
291 Other Retirement Plans	28,680.59	971.63		29,652.22
Total Personnel Services – Employee Benefits	\$2,106,713.39	\$1,611,764.61	\$356,802.74	\$4,075,280.74
300 Purchased Professional and Technical Services				
322 Professional Educational Services – Ius	57,346.25		14,490.00	71,836.25
329 Professional Educational Services – Other	110,547.21	107,360.24	14,093.22	232,000.67
330 Other Professional Services			934.00	934.00
Total Purchased Professional and Technical Services	\$167,893.46	\$107,360.24	\$29,517.22	\$304,770.92
400 Purchased Property Services				
430 Repairs and Maintenance Services		178.99		178.99
Total Purchased Property Services		\$178.99		\$178.99
500 Other Purchased Services				
510 Student Transportation Services		112.10		112.10
530 Communications		1,315.24		1,315.24
561 Tuition To Other School Districts Within the State		832,347.90		832,347.90
562 Tuition To Pennsylvania Charter Schools		766,596.74		766,596.74
568 Tuition To Private Residential Rehabilitative Institutions (PRRI) [In-State] and Detention Centers	91,854.19	3,859.56		95,713.75
580 Travel	1,733.81	1,030.41		2,764.22
594 IU Payment By Withholding for Institutionalized Children’s Programs – Special Classes		967.94		967.94
Total Other Purchased Services	\$93,588.00	\$1,606,229.89		\$1,699,817.89
600 Supplies				
610 General Supplies	47,419.85	26,490.83	45,077.45	118,988.13
Total Supplies	\$47,419.85	\$26,490.83	\$45,077.45	\$118,988.13
800 Other Objects				
810 Dues and Fees	885.50	126.50		1,012.00
Total Other Objects	\$885.50	\$126.50		\$1,012.00
Total 1200 Special Programs – Elementary / Secondary	\$5,276,321.81	\$5,388,601.85	\$898,844.95	\$11,563,768.61

General Fund (10)

1210 Life Skills Support

	<u>Elementary</u>	<u>Secondary</u>	<u>Federal</u>	<u>Total</u>
100 Personnel Services – Salaries				
100 Personnel Services – Salaries	396,482.87	583,251.18		979,734.05
Total Personnel Services – Salaries	\$396,482.87	\$583,251.18		\$979,734.05
200 Personnel Services – Employee Benefits				
210 Group Insurance – Contracted Provider	140,073.61	259,437.09		399,510.70
220 Social Security Contributions	29,453.30	43,253.36		72,706.66
230 PSERS Retirement Contributions	134,030.22	195,851.36		329,881.58
250 Unemployment Compensation	792.96	1,167.32		1,960.28
260 Workers' Compensation	2,043.90	2,963.28		5,007.18
Total Personnel Services – Employee Benefits	\$306,393.99	\$502,672.41		\$809,066.40
300 Purchased Professional and Technical Services				
329 Professional Educational Services – Other	14,768.58	15,222.50		29,991.08
Total Purchased Professional and Technical Services	\$14,768.58	\$15,222.50		\$29,991.08
500 Other Purchased Services				
580 Travel		50.11		50.11
Total Other Purchased Services		\$50.11		\$50.11
600 Supplies				
610 General Supplies	13,147.92	2,980.58	5,151.20	21,279.70
Total Supplies	\$13,147.92	\$2,980.58	\$5,151.20	\$21,279.70
Total 1210 Life Skills Support	\$730,793.36	\$1,104,176.78	\$5,151.20	\$1,840,121.34

General Fund (10)

1220 Sensory Support

	<u>Elementary</u>	<u>Secondary</u>	<u>Federal</u>	<u>Total</u>
100 Personnel Services – Salaries				
100 Personnel Services – Salaries	393,745.78	103,740.86		497,486.64
Total Personnel Services – Salaries	\$393,745.78	\$103,740.86		\$497,486.64
200 Personnel Services – Employee Benefits				
210 Group Insurance – Contracted Provider	91,022.98	26,611.03		117,634.01
220 Social Security Contributions	29,635.04	7,748.45		37,383.49
230 PSERS Retirement Contributions	132,461.82	34,563.28		167,025.10
250 Unemployment Compensation	787.32	207.60		994.92
260 Workers' Compensation	2,051.58	532.95		2,584.53
Total Personnel Services – Employee Benefits	\$255,958.74	\$69,663.31		\$325,622.05
400 Purchased Property Services				
430 Repairs and Maintenance Services		178.99		178.99
Total Purchased Property Services		\$178.99		\$178.99
500 Other Purchased Services				
580 Travel	373.65	426.80		800.45
Total Other Purchased Services	\$373.65	\$426.80		\$800.45
600 Supplies				
610 General Supplies	5,759.98	4,438.06		10,198.04
Total Supplies	\$5,759.98	\$4,438.06		\$10,198.04
800 Other Objects				
810 Dues and Fees	885.50	126.50		1,012.00
Total Other Objects	\$885.50	\$126.50		\$1,012.00
Total 1220 Sensory Support	\$656,723.65	\$178,574.52		\$835,298.17

General Fund (10)

1230 Emotional Support

	<u>Elementary</u>	<u>Secondary</u>	<u>Federal</u>	<u>Total</u>
100 Personnel Services – Salaries				
100 Personnel Services – Salaries	939,501.70	267,918.71	67,280.00	1,274,700.41
Total Personnel Services – Salaries	\$939,501.70	\$267,918.71	\$67,280.00	\$1,274,700.41
200 Personnel Services – Employee Benefits				
210 Group Insurance – Contracted Provider	321,315.76	78,455.75	827.77	400,599.28
220 Social Security Contributions	70,577.93	19,944.33	5,146.96	95,669.22
230 PSERS Retirement Contributions	313,404.72	103,115.42	11,535.12	428,055.26
250 Unemployment Compensation	1,879.20	535.92	134.63	2,549.75
260 Workers' Compensation	4,816.00	1,384.96	352.80	6,553.76
Total Personnel Services – Employee Benefits	\$711,993.61	\$203,436.38	\$17,997.28	\$933,427.27
300 Purchased Professional and Technical Services				
329 Professional Educational Services – Other	21,011.03	4,474.65	1,919.12	27,404.80
330 Other Professional Services			934.00	934.00
Total Purchased Professional and Technical Services	\$21,011.03	\$4,474.65	\$2,853.12	\$28,338.80
500 Other Purchased Services				
561 Tuition To Other School Districts Within the State		125,268.38		125,268.38
568 Tuition To Private Residential Rehabilitative Institutions (PRRI) [In-State] and Detention Centers	5,131.15	3,859.56		8,990.71
580 Travel	21.11			21.11
Total Other Purchased Services	\$5,152.26	\$129,127.94		\$134,280.20
600 Supplies				
610 General Supplies	15,788.78	7,976.00	5,150.33	28,915.11
Total Supplies	\$15,788.78	\$7,976.00	\$5,150.33	\$28,915.11
Total 1230 Emotional Support	\$1,693,447.38	\$612,933.68	\$93,280.73	\$2,399,661.79

LEA : 111444602 Mifflin County SD

Printed 11/4/2020 1:12:41 PM

General Fund (10)

1240 Academic Support

	<u>Elementary</u>	<u>Secondary</u>	<u>Federal</u>	<u>Total</u>
100 Personnel Services – Salaries				
100 Personnel Services – Salaries	1,042,986.91	1,057,711.23	400,167.54	2,500,865.68
Total Personnel Services – Salaries	\$1,042,986.91	\$1,057,711.23	\$400,167.54	\$2,500,865.68
200 Personnel Services – Employee Benefits				
210 Group Insurance – Contracted Provider	300,134.34	324,955.60	240,150.13	865,240.07
220 Social Security Contributions	78,401.29	78,769.63	29,711.26	186,882.18
230 PSERS Retirement Contributions	357,444.65	413,634.95	66,131.89	837,211.49
250 Unemployment Compensation	2,085.85	2,115.44	800.76	5,002.05
260 Workers' Compensation	5,399.21	5,511.05	2,011.42	12,921.68
291 Other Retirement Plans	28,680.59	971.63		29,652.22
Total Personnel Services – Employee Benefits	\$772,145.93	\$825,958.30	\$338,805.46	\$1,936,909.69
300 Purchased Professional and Technical Services				
329 Professional Educational Services – Other	47,253.10	60,148.59	12,174.10	119,575.79
Total Purchased Professional and Technical Services	\$47,253.10	\$60,148.59	\$12,174.10	\$119,575.79
500 Other Purchased Services				
510 Student Transportation Services		112.10		112.10
530 Communications		1,315.24		1,315.24
561 Tuition To Other School Districts Within the State		707,079.52		707,079.52
562 Tuition To Pennsylvania Charter Schools		766,596.74		766,596.74
580 Travel	383.44	246.88		630.32
Total Other Purchased Services	\$383.44	\$1,475,350.48		\$1,475,733.92
600 Supplies				
610 General Supplies	11,816.18	10,058.00	34,775.92	56,650.10
Total Supplies	\$11,816.18	\$10,058.00	\$34,775.92	\$56,650.10
Total 1240 Academic Support	\$1,874,585.56	\$3,429,226.60	\$785,923.02	\$6,089,735.18

General Fund (10)

	<u>Elementary</u>	<u>Secondary</u>	<u>Federal</u>	<u>Total</u>
1241 Learning Support – Public				
100 Personnel Services – Salaries				
100 Personnel Services – Salaries	1,006,204.35	1,039,213.79	400,167.54	2,445,585.68
Total Personnel Services – Salaries	\$1,006,204.35	\$1,039,213.79	\$400,167.54	\$2,445,585.68
200 Personnel Services – Employee Benefits				
210 Group Insurance – Contracted Provider	294,779.69	321,661.23	240,150.13	856,591.05
220 Social Security Contributions	75,693.13	77,403.94	29,711.26	182,808.33
230 PSERS Retirement Contributions	344,831.90	407,292.19	66,131.89	818,255.98
250 Unemployment Compensation	2,012.20	2,078.59	800.76	4,891.55
260 Workers' Compensation	5,208.64	5,412.08	2,011.42	12,632.14
291 Other Retirement Plans	28,680.59	971.63		29,652.22
Total Personnel Services – Employee Benefits	\$751,206.15	\$814,819.66	\$338,805.46	\$1,904,831.27
300 Purchased Professional and Technical Services				
329 Professional Educational Services – Other	47,253.10	60,148.59	12,174.10	119,575.79
Total Purchased Professional and Technical Services	\$47,253.10	\$60,148.59	\$12,174.10	\$119,575.79
500 Other Purchased Services				
510 Student Transportation Services		112.10		112.10
530 Communications		1,315.24		1,315.24
561 Tuition To Other School Districts Within the State		707,079.52		707,079.52
562 Tuition To Pennsylvania Charter Schools		766,596.74		766,596.74
Total Other Purchased Services		\$1,475,103.60		\$1,475,103.60
600 Supplies				
610 General Supplies	11,589.93	9,895.91	34,775.92	56,261.76
Total Supplies	\$11,589.93	\$9,895.91	\$34,775.92	\$56,261.76
Total 1241 Learning Support – Public	\$1,816,253.53	\$3,399,181.55	\$785,923.02	\$6,001,358.10

LEA : 111444602 Mifflin County SD

Printed 11/4/2020 1:12:41 PM

General Fund (10)

1243 Gifted Support

	<u>Elementary</u>	<u>Secondary</u>	<u>Federal</u>	<u>Total</u>
100 Personnel Services – Salaries				
100 Personnel Services – Salaries	36,782.56	18,497.44		55,280.00
Total Personnel Services – Salaries	\$36,782.56	\$18,497.44		\$55,280.00
200 Personnel Services – Employee Benefits				
210 Group Insurance – Contracted Provider	5,354.65	3,294.37		8,649.02
220 Social Security Contributions	2,708.16	1,365.69		4,073.85
230 PSERS Retirement Contributions	12,612.75	6,342.76		18,955.51
250 Unemployment Compensation	73.65	36.85		110.50
260 Workers' Compensation	190.57	98.97		289.54
Total Personnel Services – Employee Benefits	\$20,939.78	\$11,138.64		\$32,078.42
500 Other Purchased Services				
580 Travel	383.44	246.88		630.32
Total Other Purchased Services	\$383.44	\$246.88		\$630.32
600 Supplies				
610 General Supplies	226.25	162.09		388.34
Total Supplies	\$226.25	\$162.09		\$388.34
Total 1243 Gifted Support	\$58,332.03	\$30,045.05		\$88,377.08

General Fund (10)

	<u>Elementary</u>	<u>Secondary</u>	<u>Federal</u>	<u>Total</u>
1260 Physical Support				
100 Personnel Services – Salaries				
100 Personnel Services – Salaries	87,104.35	23,828.81		110,933.16
Total Personnel Services – Salaries	\$87,104.35	\$23,828.81		\$110,933.16
200 Personnel Services – Employee Benefits				
210 Group Insurance – Contracted Provider	24,515.53	24.85		24,540.38
220 Social Security Contributions	6,359.05	1,671.70		8,030.75
230 PSERS Retirement Contributions	28,711.43	8,170.76		36,882.19
250 Unemployment Compensation	174.32	47.52		221.84
260 Workers' Compensation	460.79	119.38		580.17
Total Personnel Services – Employee Benefits	\$60,221.12	\$10,034.21		\$70,255.33
300 Purchased Professional and Technical Services				
329 Professional Educational Services – Other	27,514.50	27,514.50		55,029.00
Total Purchased Professional and Technical Services	\$27,514.50	\$27,514.50		\$55,029.00
500 Other Purchased Services				
580 Travel	955.61	306.62		1,262.23
Total Other Purchased Services	\$955.61	\$306.62		\$1,262.23
600 Supplies				
610 General Supplies	906.99	1,038.19		1,945.18
Total Supplies	\$906.99	\$1,038.19		\$1,945.18
Total 1260 Physical Support	\$176,702.57	\$62,722.33		\$239,424.90

General Fund (10)

	<u>Elementary</u>	<u>Secondary</u>	<u>Federal</u>	<u>Total</u>
1290 Special Programs - Other Support				
300 <u>Purchased Professional and Technical Services</u>				
322 Professional Educational Services – Ius	57,346.25		14,490.00	71,836.25
Total Purchased Professional and Technical Services	\$57,346.25		\$14,490.00	\$71,836.25
500 <u>Other Purchased Services</u>				
568 Tuition To Private Residential Rehabilitative Institutions (PRRI) [In-State] and Detention Centers	86,723.04			86,723.04
594 IU Payment By Withholding for Institutionalized Children’s Programs – Special Classes		967.94		967.94
Total Other Purchased Services	\$86,723.04	\$967.94		\$87,690.98
Total 1290 Special Programs - Other Support	\$144,069.29	\$967.94	\$14,490.00	\$159,527.23

General Fund (10)

1300 Vocational Education

	<u>Elementary</u>	<u>Secondary</u>	<u>Federal</u>	<u>Total</u>
100 Personnel Services – Salaries				
100 Personnel Services – Salaries		887,035.84		887,035.84
Total Personnel Services – Salaries		\$887,035.84		\$887,035.84
200 Personnel Services – Employee Benefits				
210 Group Insurance – Contracted Provider		298,071.05		298,071.05
220 Social Security Contributions		65,712.38		65,712.38
230 PSERS Retirement Contributions		303,018.14		303,018.14
250 Unemployment Compensation		1,774.47		1,774.47
260 Workers' Compensation		4,651.80		4,651.80
Total Personnel Services – Employee Benefits		\$673,227.84		\$673,227.84
300 Purchased Professional and Technical Services				
329 Professional Educational Services – Other		16,437.41		16,437.41
Total Purchased Professional and Technical Services		\$16,437.41		\$16,437.41
400 Purchased Property Services				
430 Repairs and Maintenance Services		1,286.46		1,286.46
Total Purchased Property Services		\$1,286.46		\$1,286.46
500 Other Purchased Services				
564 Tuition To Career and Technology Centers		1,904,745.00		1,904,745.00
Total Other Purchased Services		\$1,904,745.00		\$1,904,745.00
600 Supplies				
610 General Supplies		44,272.42		44,272.42
Total Supplies		\$44,272.42		\$44,272.42
Total 1300 Vocational Education		\$3,527,004.97		\$3,527,004.97

General Fund (10)

	<u>Elementary</u>	<u>Secondary</u>	<u>Federal</u>	<u>Total</u>
1400 Other Instructional Programs – Elementary / Secondary				
100 Personnel Services – Salaries				
100 Personnel Services – Salaries	68,927.90	314,997.94		383,925.84
Total Personnel Services – Salaries	\$68,927.90	\$314,997.94		\$383,925.84
200 Personnel Services – Employee Benefits				
210 Group Insurance – Contracted Provider	85.32	103,172.55		103,257.87
220 Social Security Contributions	5,271.10	23,300.19		28,571.29
230 PSERS Retirement Contributions	22,478.83	108,012.82		130,491.65
250 Unemployment Compensation	137.87	629.69		767.56
260 Workers' Compensation	356.85	1,621.22		1,978.07
Total Personnel Services – Employee Benefits	\$28,329.97	\$236,736.47		\$265,066.44
300 Purchased Professional and Technical Services				
329 Professional Educational Services – Other		10,839.35		10,839.35
Total Purchased Professional and Technical Services		\$10,839.35		\$10,839.35
400 Purchased Property Services				
430 Repairs and Maintenance Services		42,273.00		42,273.00
Total Purchased Property Services		\$42,273.00		\$42,273.00
500 Other Purchased Services				
530 Communications		0.50		0.50
561 Tuition To Other School Districts Within the State		2,999.44		2,999.44
568 Tuition To Private Residential Rehabilitative Institutions (PRRI) [In-State] and Detention Centers		23,841.45		23,841.45
580 Travel	136.88			136.88
Total Other Purchased Services	\$136.88	\$26,841.39		\$26,978.27
600 Supplies				
610 General Supplies		15,172.16		15,172.16
640 Books and Periodicals	75,159.50	159,478.92		234,638.42
Total Supplies	\$75,159.50	\$174,651.08		\$249,810.58
Total 1400 Other Instructional Programs – Elementary / Secondary	\$172,554.25	\$806,339.23		\$978,893.48

General Fund (10)

	<u>Elementary</u>	<u>Secondary</u>	<u>Federal</u>	<u>Total</u>
1430 Homebound Instruction				
100 <u>Personnel Services – Salaries</u>				
100 Personnel Services – Salaries	2,324.00			2,324.00
Total Personnel Services – Salaries	\$2,324.00			\$2,324.00
200 <u>Personnel Services – Employee Benefits</u>				
220 Social Security Contributions	175.94			175.94
230 PSERS Retirement Contributions	796.88			796.88
250 Unemployment Compensation	4.64			4.64
260 Workers' Compensation	11.61			11.61
Total Personnel Services – Employee Benefits	\$989.07			\$989.07
500 <u>Other Purchased Services</u>				
580 Travel	136.88			136.88
Total Other Purchased Services	\$136.88			\$136.88
Total 1430 Homebound Instruction	\$3,449.95			\$3,449.95

LEA : 111444602 Mifflin County SD

Printed 11/4/2020 1:12:41 PM

General Fund (10)

	<u>Elementary</u>	<u>Secondary</u>	<u>Federal</u>	<u>Total</u>
1440 Alternative Regular Education Programs				
100 Personnel Services – Salaries				
100 Personnel Services – Salaries	66,603.90	314,997.94		381,601.84
Total Personnel Services – Salaries	\$66,603.90	\$314,997.94		\$381,601.84
200 Personnel Services – Employee Benefits				
210 Group Insurance – Contracted Provider	85.32	103,172.55		103,257.87
220 Social Security Contributions	5,095.16	23,300.19		28,395.35
230 PSERS Retirement Contributions	21,681.95	108,012.82		129,694.77
250 Unemployment Compensation	133.23	629.69		762.92
260 Workers' Compensation	345.24	1,621.22		1,966.46
Total Personnel Services – Employee Benefits	\$27,340.90	\$236,736.47		\$264,077.37
300 Purchased Professional and Technical Services				
329 Professional Educational Services – Other		10,839.35		10,839.35
Total Purchased Professional and Technical Services		\$10,839.35		\$10,839.35
400 Purchased Property Services				
430 Repairs and Maintenance Services		42,273.00		42,273.00
Total Purchased Property Services		\$42,273.00		\$42,273.00
500 Other Purchased Services				
530 Communications		0.50		0.50
561 Tuition To Other School Districts Within the State		2,999.44		2,999.44
568 Tuition To Private Residential Rehabilitative Institutions (PRRI) [In-State] and Detention Centers		23,841.45		23,841.45
Total Other Purchased Services		\$26,841.39		\$26,841.39
600 Supplies				
610 General Supplies		15,172.16		15,172.16
640 Books and Periodicals	75,159.50	159,478.92		234,638.42
Total Supplies	\$75,159.50	\$174,651.08		\$249,810.58
Total 1440 Alternative Regular Education Programs	\$169,104.30	\$806,339.23		\$975,443.53

General Fund (10)

1441 Adjudicated / Court-Placed Programs

	<u>Elementary</u>	<u>Secondary</u>	<u>Federal</u>	<u>Total</u>
100 Personnel Services – Salaries				
100 Personnel Services – Salaries		4,242.00		4,242.00
Total Personnel Services – Salaries		\$4,242.00		\$4,242.00
200 Personnel Services – Employee Benefits				
220 Social Security Contributions		313.26		313.26
230 PSERS Retirement Contributions		1,454.56		1,454.56
250 Unemployment Compensation		8.48		8.48
260 Workers' Compensation		21.21		21.21
Total Personnel Services – Employee Benefits		\$1,797.51		\$1,797.51
500 Other Purchased Services				
561 Tuition To Other School Districts Within the State		2,999.44		2,999.44
568 Tuition To Private Residential Rehabilitative Institutions (PRRI) [In-State] and Detention Centers		16,446.29		16,446.29
Total Other Purchased Services		\$19,445.73		\$19,445.73
Total 1441 Adjudicated / Court-Placed Programs		\$25,485.24		\$25,485.24

LEA : 111444602 Mifflin County SD

Printed 11/4/2020 1:12:41 PM

General Fund (10)

	<u>Elementary</u>	<u>Secondary</u>	<u>Federal</u>	<u>Total</u>
1442 Alternative Education Programs				
100 Personnel Services – Salaries				
100 Personnel Services – Salaries	66,603.90	310,755.94		377,359.84
Total Personnel Services – Salaries	\$66,603.90	\$310,755.94		\$377,359.84
200 Personnel Services – Employee Benefits				
210 Group Insurance – Contracted Provider	85.32	103,172.55		103,257.87
220 Social Security Contributions	5,095.16	22,986.93		28,082.09
230 PSERS Retirement Contributions	21,681.95	106,558.26		128,240.21
250 Unemployment Compensation	133.23	621.21		754.44
260 Workers' Compensation	345.24	1,600.01		1,945.25
Total Personnel Services – Employee Benefits	\$27,340.90	\$234,938.96		\$262,279.86
300 Purchased Professional and Technical Services				
329 Professional Educational Services – Other		10,839.35		10,839.35
Total Purchased Professional and Technical Services		\$10,839.35		\$10,839.35
400 Purchased Property Services				
430 Repairs and Maintenance Services		42,273.00		42,273.00
Total Purchased Property Services		\$42,273.00		\$42,273.00
500 Other Purchased Services				
530 Communications		0.50		0.50
568 Tuition To Private Residential Rehabilitative Institutions (PRRI) [In-State] and Detention Centers		7,395.16		7,395.16
Total Other Purchased Services		\$7,395.66		\$7,395.66
600 Supplies				
610 General Supplies		15,172.16		15,172.16
640 Books and Periodicals	75,159.50	159,478.92		234,638.42
Total Supplies	\$75,159.50	\$174,651.08		\$249,810.58
Total 1442 Alternative Education Programs	\$169,104.30	\$780,853.99		\$949,958.29

General Fund (10)

1500 Nonpublic School Programs

100 Personnel Services – Salaries

	<u>Elementary</u>	<u>Secondary</u>	<u>Federal</u>	<u>Total</u>
100 Personnel Services – Salaries			51,530.00	51,530.00
Total Personnel Services – Salaries			\$51,530.00	\$51,530.00

200 Personnel Services – Employee Benefits

210 Group Insurance – Contracted Provider			24,630.51	24,630.51
220 Social Security Contributions			3,812.80	3,812.80
230 PSERS Retirement Contributions			8,834.77	8,834.77
250 Unemployment Compensation			102.97	102.97
260 Workers' Compensation			270.02	270.02
Total Personnel Services – Employee Benefits			\$37,651.07	\$37,651.07

500 Other Purchased Services

580 Travel			1,297.83	1,297.83
Total Other Purchased Services			\$1,297.83	\$1,297.83

600 Supplies

610 General Supplies			124.00	124.00
Total Supplies			\$124.00	\$124.00

Total 1500 Nonpublic School Programs

			\$90,602.90	\$90,602.90
--	--	--	--------------------	--------------------

General Fund (10)

2000 Support Services

Total

100 Personnel Services – Salaries

100 Personnel Services – Salaries 7,684,799.65

Total Personnel Services – Salaries

\$7,684,799.65

200 Personnel Services – Employee Benefits

210 Group Insurance – Contracted Provider 2,173,078.79

220 Social Security Contributions 578,852.73

230 PSERS Retirement Contributions 2,550,933.02

240 Tuition Reimbursement 303,366.06

250 Unemployment Compensation 15,256.64

260 Workers' Compensation 38,777.52

291 Other Retirement Plans 92,240.54

Total Personnel Services – Employee Benefits

\$5,752,505.30

300 Purchased Professional and Technical Services

310 Official / Administrative Services 208,270.63

329 Professional Educational Services – Other 166,496.60

330 Other Professional Services 182,221.49

340 Technical Services 130,622.17

350 Security / Safety Services 96,803.69

360 Employee Training and Development Services 28,557.43

390 Other Purchased Professional and Technical Services 8,888.55

Total Purchased Professional and Technical Services

\$821,860.56

400 Purchased Property Services

410 Cleaning Services 73,600.88

420 Utility Services 743,331.34

430 Repairs and Maintenance Services 637,186.15

440 Rentals 1,227.00

Total Purchased Property Services

\$1,455,345.37

500 Other Purchased Services

513 Contracted Carriers 4,824,383.97

516 Student Transportation Services From the IU 54,613.57

520 Insurance – General 5,470.00

523 General Property and Liability Insurance 212,801.00

529 Other Insurance 35,467.00

530 Communications 21,754.06

541 Advertising Related to Federal Grant Awards 25,354.26

550 Printing and Binding 221.49

580 Travel 47,852.22

Total Other Purchased Services

\$5,227,917.57

600 Supplies

610 General Supplies 442,959.75

620 Energy 233,909.15

640 Books and Periodicals 109,760.86

650 Supplies & Fees – Technology Related 15,620.00

LEA : 111444602 Mifflin County SD

Printed 11/4/2020 1:12:53 PM

General Fund (10)

2000 Support Services

	<u>Total</u>
Total Supplies	\$802,249.76
700 Property	
752 Capital Equipment – Original and Additional	46,699.81
758 Capitalized Technology Software - Original	42,640.00
768 Capitalized Technology Software - Replacement	(22,834.00)
Total Property	\$66,505.81
800 Other Objects	
810 Dues and Fees	34,720.42
Total Other Objects	\$34,720.42
Total 2000 Support Services	\$21,845,904.44

General Fund (10)

	<u>Elementary</u>	<u>Secondary</u>	<u>Federal</u>	<u>Total</u>
2100 Support Services – Students				
100 Personnel Services – Salaries				
100 Personnel Services – Salaries	476,238.08	562,728.09	92,757.60	1,183,803.77
Total Personnel Services – Salaries	\$476,238.08	\$562,728.09	\$92,757.60	\$1,183,803.77
200 Personnel Services – Employee Benefits				
210 Group Insurance – Contracted Provider	99,468.33	168,926.35	31,231.55	318,801.66
220 Social Security Contributions	36,101.32	42,189.53	6,978.06	88,815.92
230 PSERS Retirement Contributions	162,262.76	192,619.27	15,903.33	387,613.18
250 Unemployment Compensation	952.35	1,125.61	185.35	2,367.57
260 Workers' Compensation	2,465.95	2,920.27	486.01	6,132.75
291 Other Retirement Plans		16,500.00		16,500.00
Total Personnel Services – Employee Benefits	\$301,250.71	\$424,281.03	\$54,784.30	\$820,231.08
300 Purchased Professional and Technical Services				
329 Professional Educational Services – Other	11,356.53	84,284.48		95,641.01
Total Purchased Professional and Technical Services	\$11,356.53	\$84,284.48		\$95,641.01
500 Other Purchased Services				
530 Communications			609.59	609.59
580 Travel	864.61	46.75	1,304.93	2,578.12
Total Other Purchased Services	\$864.61	\$46.75	\$1,914.52	\$3,187.71
600 Supplies				
610 General Supplies	3,351.95	3,589.58	1,020.73	8,676.97
650 Supplies & Fees – Technology Related	11,281.08	4,338.92		15,620.00
Total Supplies	\$14,633.03	\$7,928.50	\$1,020.73	\$24,296.97
Total 2100 Support Services – Students	\$804,342.96	\$1,079,268.85	\$150,477.15	\$2,127,160.54

General Fund (10)

	<u>Elementary</u>	<u>Secondary</u>	<u>Federal</u>	<u>Total</u>
2120 Guidance Services				
100 Personnel Services – Salaries				
100 Personnel Services – Salaries	226,313.01	512,349.95	46,591.60	785,254.56
Total Personnel Services – Salaries	\$226,313.01	\$512,349.95	\$46,591.60	\$785,254.56
200 Personnel Services – Employee Benefits				
210 Group Insurance – Contracted Provider	64,202.63	154,759.61	8,697.32	227,659.56
220 Social Security Contributions	17,006.91	38,324.68	3,518.47	58,850.06
230 PSERS Retirement Contributions	76,976.10	175,058.46	7,988.08	260,022.64
250 Unemployment Compensation	452.56	1,024.81	93.08	1,570.45
260 Workers' Compensation	1,170.56	2,649.31	244.16	4,064.03
291 Other Retirement Plans		16,500.00		16,500.00
Total Personnel Services – Employee Benefits	\$159,808.76	\$388,316.87	\$20,541.11	\$568,666.74
300 Purchased Professional and Technical Services				
329 Professional Educational Services – Other		9,039.38		9,039.38
Total Purchased Professional and Technical Services		\$9,039.38		\$9,039.38
500 Other Purchased Services				
580 Travel	378.74			378.74
Total Other Purchased Services	\$378.74			\$378.74
600 Supplies				
610 General Supplies	749.07	747.08		1,496.15
Total Supplies	\$749.07	\$747.08		\$1,496.15
Total 2120 Guidance Services	\$387,249.58	\$910,453.28	\$67,132.71	\$1,364,835.57

General Fund (10)

	<u>Elementary</u>	<u>Secondary</u>	<u>Federal</u>	<u>Total</u>
2140 Psychological Services				
100 Personnel Services – Salaries				
100 Personnel Services – Salaries	249,925.07	50,378.14		300,303.21
Total Personnel Services – Salaries	\$249,925.07	\$50,378.14		\$300,303.21
200 Personnel Services – Employee Benefits				
210 Group Insurance – Contracted Provider	35,265.70	14,166.74		49,432.44
220 Social Security Contributions	19,094.41	3,864.85		22,959.26
230 PSERS Retirement Contributions	85,286.66	17,560.81		102,847.47
250 Unemployment Compensation	499.79	100.80		600.59
260 Workers' Compensation	1,295.39	270.96		1,566.35
Total Personnel Services – Employee Benefits	\$141,441.95	\$35,964.16		\$177,406.11
300 Purchased Professional and Technical Services				
329 Professional Educational Services – Other		75,000.00		75,000.00
Total Purchased Professional and Technical Services		\$75,000.00		\$75,000.00
500 Other Purchased Services				
580 Travel	485.87	46.75		532.62
Total Other Purchased Services	\$485.87	\$46.75		\$532.62
600 Supplies				
610 General Supplies	2,602.88	2,842.50	970.73	6,416.11
Total Supplies	\$2,602.88	\$2,842.50	\$970.73	\$6,416.11
Total 2140 Psychological Services	\$394,455.77	\$164,231.55	\$970.73	\$559,658.05

LEA : 111444602 Mifflin County SD

Printed 11/4/2020 1:12:53 PM

General Fund (10)

	<u>Elementary</u>	<u>Secondary</u>	<u>Federal</u>	<u>Total</u>
2160 Social Work Services				
100 Personnel Services – Salaries				
100 Personnel Services – Salaries			46,166.00	98,246.00
Total Personnel Services – Salaries			\$46,166.00	\$98,246.00
200 Personnel Services – Employee Benefits				
210 Group Insurance – Contracted Provider			22,534.23	41,709.66
220 Social Security Contributions			3,459.59	7,006.60
230 PSERS Retirement Contributions			7,915.25	24,743.07
250 Unemployment Compensation			92.27	196.53
260 Workers' Compensation			241.85	502.37
Total Personnel Services – Employee Benefits			\$34,243.19	\$74,158.23
500 Other Purchased Services				
530 Communications			609.59	609.59
580 Travel			1,304.93	1,666.76
Total Other Purchased Services			\$1,914.52	\$2,276.35
600 Supplies				
610 General Supplies			50.00	764.71
Total Supplies			\$50.00	\$764.71
Total 2160 Social Work Services			\$82,373.71	\$175,445.29

General Fund (10)

	<u>Elementary</u>	<u>Secondary</u>	<u>Federal</u>	<u>Total</u>
2190 Other Student Services				
300 <u>Purchased Professional and Technical Services</u>				
329 Professional Educational Services – Other	11,356.53	245.10		11,601.63
Total Purchased Professional and Technical Services	\$11,356.53	\$245.10		\$11,601.63
600 <u>Supplies</u>				
650 Supplies & Fees – Technology Related	11,281.08	4,338.92		15,620.00
Total Supplies	\$11,281.08	\$4,338.92		\$15,620.00
Total 2190 Other Student Services	\$22,637.61	\$4,584.02		\$27,221.63

LEA : 111444602 Mifflin County SD

Printed 11/4/2020 1:12:53 PM

General Fund (10)

	<u>Elementary</u>	<u>Secondary</u>	<u>Federal</u>	<u>Total</u>
2200 Support Services – Instructional Staff				
100 Personnel Services – Salaries				
100 Personnel Services – Salaries	414,117.75	274,134.26	72,431.90	760,683.91
Total Personnel Services – Salaries	\$414,117.75	\$274,134.26	\$72,431.90	\$760,683.91
200 Personnel Services – Employee Benefits				
210 Group Insurance – Contracted Provider	83,886.26	23,119.36	18,580.99	125,586.61
220 Social Security Contributions	31,311.26	20,930.12	5,511.37	57,752.75
230 PSERS Retirement Contributions	142,539.62	94,356.28	12,420.10	249,316.00
240 Tuition Reimbursement	147,817.00	106,340.06		254,157.06
250 Unemployment Compensation	827.52	548.11	144.64	1,520.27
260 Workers' Compensation	2,127.64	1,397.86	361.99	3,887.49
Total Personnel Services – Employee Benefits	\$408,509.30	\$246,691.79	\$37,019.09	\$692,220.18
300 Purchased Professional and Technical Services				
329 Professional Educational Services – Other	28,112.46	16,689.63	3,575.00	48,377.09
360 Employee Training and Development Services	7,338.81	7,046.62	14,172.00	28,557.43
Total Purchased Professional and Technical Services	\$35,451.27	\$23,736.25	\$17,747.00	\$76,934.52
500 Other Purchased Services				
530 Communications	341.03	341.02		682.05
580 Travel	18,137.95	9,544.28	6,585.27	34,267.50
Total Other Purchased Services	\$18,478.98	\$9,885.30	\$6,585.27	\$34,949.55
600 Supplies				
610 General Supplies	27,377.69	38,936.43	5,824.88	72,139.00
640 Books and Periodicals	19,535.04	8,404.66	500.00	28,439.70
Total Supplies	\$46,912.73	\$47,341.09	\$6,324.88	\$100,578.70
800 Other Objects				
810 Dues and Fees	612.50	612.50		1,225.00
Total Other Objects	\$612.50	\$612.50		\$1,225.00
Total 2200 Support Services – Instructional Staff	\$924,082.53	\$602,401.19	\$140,108.14	\$1,666,591.86

General Fund (10)

2250 School Library Services

100 Personnel Services – Salaries

	<u>Elementary</u>	<u>Secondary</u>	<u>Federal</u>	<u>Total</u>
100 Personnel Services – Salaries	232,694.65	111,947.56		344,642.21
Total Personnel Services – Salaries	\$232,694.65	\$111,947.56		\$344,642.21

200 Personnel Services – Employee Benefits

210 Group Insurance – Contracted Provider	66,251.22	5,484.34		71,735.56
220 Social Security Contributions	17,464.42	8,535.65		26,000.07
230 PSERS Retirement Contributions	79,694.76	38,097.52		117,792.28
250 Unemployment Compensation	465.21	223.78		688.99
260 Workers' Compensation	1,219.12	586.87		1,805.99
Total Personnel Services – Employee Benefits	\$165,094.73	\$52,928.16		\$218,022.89

300 Purchased Professional and Technical Services

329 Professional Educational Services – Other	3,754.73	3,337.60		7,092.33
Total Purchased Professional and Technical Services	\$3,754.73	\$3,337.60		\$7,092.33

600 Supplies

610 General Supplies	10,329.67	2,764.65		13,094.32
640 Books and Periodicals	19,535.04	8,404.66		27,939.70
Total Supplies	\$29,864.71	\$11,169.31		\$41,034.02

Total 2250 School Library Services

Total 2250 School Library Services	\$431,408.82	\$179,382.63		\$610,791.45
---	---------------------	---------------------	--	---------------------

General Fund (10)

2260 Instruction and Curriculum Development Services

	<u>Elementary</u>	<u>Secondary</u>	<u>Federal</u>	<u>Total</u>
100 Personnel Services – Salaries				
100 Personnel Services – Salaries	159,504.60	149,503.70	72,421.40	381,429.70
Total Personnel Services – Salaries	\$159,504.60	\$149,503.70	\$72,421.40	\$381,429.70
200 Personnel Services – Employee Benefits				
210 Group Insurance – Contracted Provider	17,635.04	17,635.02	18,580.99	53,851.05
220 Social Security Contributions	12,193.27	11,436.22	5,510.58	29,140.07
230 PSERS Retirement Contributions	55,340.67	51,909.74	12,416.50	119,666.91
250 Unemployment Compensation	318.54	299.01	144.62	762.17
260 Workers' Compensation	799.00	747.64	361.94	1,908.58
Total Personnel Services – Employee Benefits	\$86,286.52	\$82,027.63	\$37,014.63	\$205,328.78
300 Purchased Professional and Technical Services				
329 Professional Educational Services – Other	2,183.22	2,316.78		4,500.00
Total Purchased Professional and Technical Services	\$2,183.22	\$2,316.78		\$4,500.00
500 Other Purchased Services				
530 Communications	341.03	341.02		682.05
580 Travel	6,567.07	776.09		7,343.16
Total Other Purchased Services	\$6,908.10	\$1,117.11		\$8,025.21
600 Supplies				
610 General Supplies	8,041.52	8,041.52		16,083.04
640 Books and Periodicals			500.00	500.00
Total Supplies	\$8,041.52	\$8,041.52	\$500.00	\$16,583.04
800 Other Objects				
810 Dues and Fees	612.50	612.50		1,225.00
Total Other Objects	\$612.50	\$612.50		\$1,225.00
Total 2260 Instruction and Curriculum Development Services	\$263,536.46	\$243,619.24	\$109,936.03	\$617,091.73

General Fund (10)

	<u>Elementary</u>	<u>Secondary</u>	<u>Federal</u>	<u>Total</u>
2270 Instructional Staff Professional Development Services				
100 Personnel Services – Salaries				
100 Personnel Services – Salaries	21,918.50	12,683.00	10.50	34,612.00
Total Personnel Services – Salaries	\$21,918.50	\$12,683.00	\$10.50	\$34,612.00
200 Personnel Services – Employee Benefits				
220 Social Security Contributions	1,653.57	958.25	0.79	2,612.61
230 PSERS Retirement Contributions	7,504.19	4,349.02	3.60	11,856.81
240 Tuition Reimbursement	147,817.00	106,340.06		254,157.06
250 Unemployment Compensation	43.77	25.32	0.02	69.11
260 Workers' Compensation	109.52	63.35	0.05	172.92
Total Personnel Services – Employee Benefits	\$157,128.05	\$111,736.00	\$4.46	\$268,868.51
300 Purchased Professional and Technical Services				
329 Professional Educational Services – Other	22,174.51	11,035.25	3,575.00	36,784.76
360 Employee Training and Development Services	5,488.81	7,046.62	1,150.00	13,685.43
Total Purchased Professional and Technical Services	\$27,663.32	\$18,081.87	\$4,725.00	\$50,470.19
500 Other Purchased Services				
580 Travel	11,570.88	8,768.19	4,812.86	25,151.93
Total Other Purchased Services	\$11,570.88	\$8,768.19	\$4,812.86	\$25,151.93
600 Supplies				
610 General Supplies	9,006.50	28,130.26		37,136.76
Total Supplies	\$9,006.50	\$28,130.26		\$37,136.76
Total 2270 Instructional Staff Professional Development Services	\$227,287.25	\$179,399.32	\$9,552.82	\$416,239.39

General Fund (10)

	<u>Elementary</u>	<u>Secondary</u>	<u>Federal</u>	<u>Total</u>
2280 Nonpublic Support Services				
300 <u>Purchased Professional and Technical Services</u>				
360 Employee Training and Development Services	1,850.00		13,022.00	14,872.00
Total Purchased Professional and Technical Services	\$1,850.00		\$13,022.00	\$14,872.00
500 <u>Other Purchased Services</u>				
580 Travel			1,772.41	1,772.41
Total Other Purchased Services			\$1,772.41	\$1,772.41
600 <u>Supplies</u>				
610 General Supplies			5,824.88	5,824.88
Total Supplies			\$5,824.88	\$5,824.88
Total 2280 Nonpublic Support Services	\$1,850.00		\$20,619.29	\$22,469.29

General Fund (10)

2300 Support Services – Administration

	<u>Elementary</u>	<u>Secondary</u>	<u>Federal</u>	<u>Total</u>
100 Personnel Services – Salaries				
100 Personnel Services – Salaries	1,015,307.60	900,937.41		2,350,322.33
Total Personnel Services – Salaries	\$1,015,307.60	\$900,937.41		\$2,350,322.33
200 Personnel Services – Employee Benefits				
210 Group Insurance – Contracted Provider	301,049.87	240,106.63		629,629.11
220 Social Security Contributions	76,678.88	68,272.66		176,900.64
230 PSERS Retirement Contributions	346,251.28	306,039.66		781,716.18
250 Unemployment Compensation	2,030.94	1,802.21		4,588.44
260 Workers' Compensation	5,076.51	4,504.69		11,752.10
291 Other Retirement Plans	12,744.30	5,100.00		34,094.30
Total Personnel Services – Employee Benefits	\$743,831.78	\$625,825.85		\$1,638,680.77
300 Purchased Professional and Technical Services				
310 Official / Administrative Services				117,766.03
329 Professional Educational Services – Other	3,213.17	11,537.78		14,750.95
330 Other Professional Services				168,982.13
390 Other Purchased Professional and Technical Services				4,500.00
Total Purchased Professional and Technical Services	\$3,213.17	\$11,537.78		\$305,999.11
500 Other Purchased Services				
520 Insurance – General				5,470.00
530 Communications	4,332.19	8,760.12		13,092.31
541 Advertising Related to Federal Grant Awards				25,354.26
550 Printing and Binding				218.50
580 Travel	1,322.51	51.07		3,806.39
Total Other Purchased Services	\$5,654.70	\$8,811.19		\$47,941.46
600 Supplies				
610 General Supplies	895.36	3,008.59		57,775.76
Total Supplies	\$895.36	\$3,008.59		\$57,775.76
800 Other Objects				
810 Dues and Fees	2,975.00	2,104.95		28,865.42
Total Other Objects	\$2,975.00	\$2,104.95		\$28,865.42
Total 2300 Support Services – Administration	\$1,771,877.61	\$1,552,225.77		\$4,429,584.85

General Fund (10)

	<u>Elementary</u>	<u>Secondary</u>	<u>Federal</u>	<u>Total</u>
2310 Board Services				
100 Personnel Services – Salaries				
100 Personnel Services – Salaries				4,740.32
Total Personnel Services – Salaries				\$4,740.32
200 Personnel Services – Employee Benefits				
220 Social Security Contributions				359.15
230 PSERS Retirement Contributions				1,625.26
250 Unemployment Compensation				9.62
260 Workers' Compensation				23.66
Total Personnel Services – Employee Benefits				\$2,017.69
300 Purchased Professional and Technical Services				
330 Other Professional Services				49,611.88
390 Other Purchased Professional and Technical Services				4,500.00
Total Purchased Professional and Technical Services				\$54,111.88
500 Other Purchased Services				
520 Insurance – General				5,470.00
541 Advertising Related to Federal Grant Awards				25,354.26
580 Travel				1,464.80
Total Other Purchased Services				\$32,289.06
600 Supplies				
610 General Supplies				11.39
Total Supplies				\$11.39
800 Other Objects				
810 Dues and Fees				15,699.87
Total Other Objects				\$15,699.87
Total 2310 Board Services				\$108,870.21

General Fund (10)

	<u>Elementary</u>	<u>Secondary</u>	<u>Federal</u>	<u>Total</u>
2330 Tax Assessment and Collection Services				
100 Personnel Services – Salaries				
100 Personnel Services – Salaries				56,634.00
Total Personnel Services – Salaries				\$56,634.00
200 Personnel Services – Employee Benefits				
220 Social Security Contributions				4,332.57
260 Workers' Compensation				283.33
Total Personnel Services – Employee Benefits				\$4,615.90
300 Purchased Professional and Technical Services				
310 Official / Administrative Services				117,766.03
Total Purchased Professional and Technical Services				\$117,766.03
600 Supplies				
610 General Supplies				51,204.24
Total Supplies				\$51,204.24
Total 2330 Tax Assessment and Collection Services				\$230,220.17

General Fund (10)

2350 Legal and Accounting Services

Elementary

Secondary

Federal

Total

300 Purchased Professional and Technical Services

330 Other Professional Services

119,370.25

Total Purchased Professional and Technical Services

\$119,370.25

Total 2350 Legal and Accounting Services

\$119,370.25

General Fund (10)

	<u>Elementary</u>	<u>Secondary</u>	<u>Federal</u>	<u>Total</u>
2360 Office of the Superintendent / Executive Director Services				
100 Personnel Services – Salaries				
100 Personnel Services – Salaries				372,703.00
Total Personnel Services – Salaries				\$372,703.00
200 Personnel Services – Employee Benefits				
210 Group Insurance – Contracted Provider				88,472.61
220 Social Security Contributions				27,257.38
230 PSERS Retirement Contributions				127,799.98
250 Unemployment Compensation				745.67
260 Workers' Compensation				1,863.91
291 Other Retirement Plans				16,250.00
Total Personnel Services – Employee Benefits				\$262,389.55
500 Other Purchased Services				
530 Communications	277.90	533.20		811.10
550 Printing and Binding				218.50
580 Travel				968.01
Total Other Purchased Services	\$277.90	\$533.20		\$1,997.61
600 Supplies				
610 General Supplies				2,656.18
Total Supplies				\$2,656.18
800 Other Objects				
810 Dues and Fees				8,085.60
Total Other Objects				\$8,085.60
Total 2360 Office of the Superintendent / Executive Director Services	\$277.90	\$533.20		\$647,831.94

General Fund (10)

	<u>Elementary</u>	<u>Secondary</u>	<u>Federal</u>	<u>Total</u>
2380 Office of the Principal Services				
100 Personnel Services – Salaries				
100 Personnel Services – Salaries	1,015,307.60	900,937.41		1,916,245.01
Total Personnel Services – Salaries	\$1,015,307.60	\$900,937.41		\$1,916,245.01
200 Personnel Services – Employee Benefits				
210 Group Insurance – Contracted Provider	301,049.87	240,106.63		541,156.50
220 Social Security Contributions	76,678.88	68,272.66		144,951.54
230 PSERS Retirement Contributions	346,251.28	306,039.66		652,290.94
250 Unemployment Compensation	2,030.94	1,802.21		3,833.15
260 Workers' Compensation	5,076.51	4,504.69		9,581.20
291 Other Retirement Plans	12,744.30	5,100.00		17,844.30
Total Personnel Services – Employee Benefits	\$743,831.78	\$625,825.85		\$1,369,657.63
300 Purchased Professional and Technical Services				
329 Professional Educational Services – Other	3,213.17	11,537.78		14,750.95
Total Purchased Professional and Technical Services	\$3,213.17	\$11,537.78		\$14,750.95
500 Other Purchased Services				
530 Communications	4,054.29	8,226.92		12,281.21
580 Travel	1,322.51	51.07		1,373.58
Total Other Purchased Services	\$5,376.80	\$8,277.99		\$13,654.79
600 Supplies				
610 General Supplies	895.36	3,008.59		3,903.95
Total Supplies	\$895.36	\$3,008.59		\$3,903.95
800 Other Objects				
810 Dues and Fees	2,975.00	2,104.95		5,079.95
Total Other Objects	\$2,975.00	\$2,104.95		\$5,079.95
Total 2380 Office of the Principal Services	\$1,771,599.71	\$1,551,692.57		\$3,323,292.28

General Fund (10)

	<u>Elementary</u>	<u>Secondary</u>	<u>Federal</u>	<u>Total</u>
2400 Support Services – Pupil Health				
100 Personnel Services – Salaries				
100 Personnel Services – Salaries				402,439.15
Total Personnel Services – Salaries				\$402,439.15
200 Personnel Services – Employee Benefits				
210 Group Insurance – Contracted Provider				76,035.57
220 Social Security Contributions				30,397.49
230 PSERS Retirement Contributions				130,962.13
250 Unemployment Compensation				804.70
260 Workers' Compensation				2,066.59
Total Personnel Services – Employee Benefits				\$240,266.48
300 Purchased Professional and Technical Services				
329 Professional Educational Services – Other				7,594.05
330 Other Professional Services				9,359.60
390 Other Purchased Professional and Technical Services				720.00
Total Purchased Professional and Technical Services				\$17,673.65
500 Other Purchased Services				
580 Travel				189.49
Total Other Purchased Services				\$189.49
600 Supplies				
610 General Supplies			13,944.78	22,433.28
Total Supplies			\$13,944.78	\$22,433.28
Total 2400 Support Services – Pupil Health			\$13,944.78	\$683,002.05

General Fund (10)

2440 Nursing Services

	<u>Elementary</u>	<u>Secondary</u>	<u>Federal</u>	<u>Total</u>
100 Personnel Services – Salaries				
100 Personnel Services – Salaries				402,439.15
Total Personnel Services – Salaries				\$402,439.15
200 Personnel Services – Employee Benefits				
210 Group Insurance – Contracted Provider				76,035.57
220 Social Security Contributions				30,397.49
230 PSERS Retirement Contributions				130,962.13
250 Unemployment Compensation				804.70
260 Workers' Compensation				2,066.59
Total Personnel Services – Employee Benefits				\$240,266.48
300 Purchased Professional and Technical Services				
329 Professional Educational Services – Other				7,594.05
330 Other Professional Services				9,359.60
390 Other Purchased Professional and Technical Services				720.00
Total Purchased Professional and Technical Services				\$17,673.65
500 Other Purchased Services				
580 Travel				189.49
Total Other Purchased Services				\$189.49
600 Supplies				
610 General Supplies			13,944.78	22,433.28
Total Supplies			\$13,944.78	\$22,433.28
Total 2440 Nursing Services			\$13,944.78	\$683,002.05

General Fund (10)

2500 Support Services – Business

Elementary Secondary Federal Total

100 Personnel Services – Salaries

100 Personnel Services – Salaries 379,884.87

Total Personnel Services – Salaries \$379,884.87

200 Personnel Services – Employee Benefits

210 Group Insurance – Contracted Provider 90,531.34

220 Social Security Contributions 28,486.61

230 PSERS Retirement Contributions 127,370.94

250 Unemployment Compensation 759.75

260 Workers' Compensation 1,899.29

291 Other Retirement Plans 7,085.60

Total Personnel Services – Employee Benefits \$256,133.53

300 Purchased Professional and Technical Services

310 Official / Administrative Services 90,504.60

329 Professional Educational Services – Other 133.50

Total Purchased Professional and Technical Services \$90,638.10

500 Other Purchased Services

530 Communications 7,190.25

580 Travel 351.09

Total Other Purchased Services \$7,541.34

600 Supplies

610 General Supplies 14,708.89

640 Books and Periodicals 14,315.00

Total Supplies \$29,023.89

800 Other Objects

810 Dues and Fees 2,448.46

Total Other Objects \$2,448.46

Total 2500 Support Services – Business \$765,670.19

General Fund (10)

2510 Fiscal Services

Elementary Secondary Federal Total

100 Personnel Services – Salaries				
100 Personnel Services – Salaries				379,884.87
Total Personnel Services – Salaries				\$379,884.87
200 Personnel Services – Employee Benefits				
210 Group Insurance – Contracted Provider				90,531.34
220 Social Security Contributions				28,486.61
230 PSERS Retirement Contributions				127,370.94
250 Unemployment Compensation				759.75
260 Workers' Compensation				1,899.29
291 Other Retirement Plans				7,085.60
Total Personnel Services – Employee Benefits				\$256,133.53
300 Purchased Professional and Technical Services				
310 Official / Administrative Services				90,504.60
329 Professional Educational Services – Other				133.50
Total Purchased Professional and Technical Services				\$90,638.10
500 Other Purchased Services				
530 Communications				7,190.25
580 Travel				351.09
Total Other Purchased Services				\$7,541.34
600 Supplies				
610 General Supplies				14,708.89
640 Books and Periodicals				14,315.00
Total Supplies				\$29,023.89
800 Other Objects				
810 Dues and Fees				2,448.46
Total Other Objects				\$2,448.46
Total 2510 Fiscal Services				\$765,670.19

General Fund (10)

2511 Supervision of Fiscal Services - Head of Component

	<u>Elementary</u>	<u>Secondary</u>	<u>Federal</u>	<u>Total</u>
100 Personnel Services – Salaries				
100 Personnel Services – Salaries				150,712.04
Total Personnel Services – Salaries				\$150,712.04
200 Personnel Services – Employee Benefits				
210 Group Insurance – Contracted Provider				26,310.47
220 Social Security Contributions				11,489.98
230 PSERS Retirement Contributions				50,522.49
250 Unemployment Compensation				301.30
260 Workers' Compensation				753.67
Total Personnel Services – Employee Benefits				\$89,377.91
300 Purchased Professional and Technical Services				
329 Professional Educational Services – Other				133.50
Total Purchased Professional and Technical Services				\$133.50
500 Other Purchased Services				
580 Travel				206.83
Total Other Purchased Services				\$206.83
600 Supplies				
640 Books and Periodicals				14,315.00
Total Supplies				\$14,315.00
800 Other Objects				
810 Dues and Fees				360.00
Total Other Objects				\$360.00
Total 2511 Supervision of Fiscal Services - Head of Component				\$255,105.28

General Fund (10)

2514 Payroll Services

Elementary Secondary Federal Total

100 Personnel Services – Salaries

100 Personnel Services – Salaries 86,454.14

Total Personnel Services – Salaries \$86,454.14

200 Personnel Services – Employee Benefits

210 Group Insurance – Contracted Provider 35,260.79

220 Social Security Contributions 6,357.89

230 PSERS Retirement Contributions 29,066.86

250 Unemployment Compensation 173.01

260 Workers' Compensation 432.20

291 Other Retirement Plans 7,085.60

Total Personnel Services – Employee Benefits \$78,376.35

500 Other Purchased Services

580 Travel 10.44

Total Other Purchased Services \$10.44

800 Other Objects

810 Dues and Fees 407.46

Total Other Objects \$407.46

Total 2514 Payroll Services \$165,248.39

General Fund (10)

	<u>Elementary</u>	<u>Secondary</u>	<u>Federal</u>	<u>Total</u>
2515 Financial Accounting Services				
100 Personnel Services – Salaries				
100 Personnel Services – Salaries				55,711.40
Total Personnel Services – Salaries				\$55,711.40
200 Personnel Services – Employee Benefits				
210 Group Insurance – Contracted Provider				27,610.38
220 Social Security Contributions				3,961.43
230 PSERS Retirement Contributions				19,103.52
250 Unemployment Compensation				111.43
260 Workers' Compensation				278.44
Total Personnel Services – Employee Benefits				\$51,065.20
300 Purchased Professional and Technical Services				
310 Official / Administrative Services				85,761.60
Total Purchased Professional and Technical Services				\$85,761.60
500 Other Purchased Services				
530 Communications				7,190.25
Total Other Purchased Services				\$7,190.25
600 Supplies				
610 General Supplies				14,708.89
Total Supplies				\$14,708.89
800 Other Objects				
810 Dues and Fees				1,456.00
Total Other Objects				\$1,456.00
Total 2515 Financial Accounting Services				\$215,893.34

General Fund (10)

2519 Other Fiscal Services

Elementary Secondary Federal Total

100 Personnel Services – Salaries

100 Personnel Services – Salaries 87,007.29

Total Personnel Services – Salaries

\$87,007.29

200 Personnel Services – Employee Benefits

210 Group Insurance – Contracted Provider 1,349.70

220 Social Security Contributions 6,677.31

230 PSERS Retirement Contributions 28,678.07

250 Unemployment Compensation 174.01

260 Workers' Compensation 434.98

Total Personnel Services – Employee Benefits

\$37,314.07

300 Purchased Professional and Technical Services

310 Official / Administrative Services 4,743.00

Total Purchased Professional and Technical Services

\$4,743.00

500 Other Purchased Services

580 Travel 133.82

Total Other Purchased Services

\$133.82

800 Other Objects

810 Dues and Fees 225.00

Total Other Objects

\$225.00

Total 2519 Other Fiscal Services

\$129,423.18

General Fund (10)

	<u>Elementary</u>	<u>Secondary</u>	<u>Federal</u>	<u>Total</u>
2600 Operation and Maintenance of Plant Services				
100 Personnel Services – Salaries				
100 Personnel Services – Salaries			2,304.00	1,877,750.61
Total Personnel Services – Salaries			\$2,304.00	\$1,877,750.61
200 Personnel Services – Employee Benefits				
210 Group Insurance – Contracted Provider				756,785.99
220 Social Security Contributions			87.54	141,345.62
230 PSERS Retirement Contributions			374.44	639,023.73
250 Unemployment Compensation			4.61	3,755.91
260 Workers' Compensation			11.52	9,389.73
291 Other Retirement Plans				17,751.78
Total Personnel Services – Employee Benefits			\$478.11	\$1,568,052.76
300 Purchased Professional and Technical Services				
330 Other Professional Services				3,879.76
350 Security / Safety Services			1,627.08	96,803.69
Total Purchased Professional and Technical Services			\$1,627.08	\$100,683.45
400 Purchased Property Services				
410 Cleaning Services				73,600.88
420 Utility Services				743,331.34
430 Repairs and Maintenance Services				631,957.11
440 Rentals				1,227.00
Total Purchased Property Services				\$1,450,116.33
500 Other Purchased Services				
523 General Property and Liability Insurance				212,801.00
529 Other Insurance				35,467.00
580 Travel				130.04
Total Other Purchased Services				\$248,398.04
600 Supplies				
610 General Supplies	106,080.15	80,317.02	14,876.01	201,273.18
620 Energy				232,276.97
Total Supplies	\$106,080.15	\$80,317.02	\$14,876.01	\$433,550.15
700 Property				
752 Capital Equipment – Original and Additional				46,699.81
Total Property				\$46,699.81
800 Other Objects				
810 Dues and Fees				295.75
Total Other Objects				\$295.75
Total 2600 Operation and Maintenance of Plant Services	\$106,080.15	\$80,317.02	\$19,285.20	\$5,725,546.90

General Fund (10)

2610 Supervision of Operation and Maintenance of Plant Services

Elementary

Secondary

Federal

Total

100 Personnel Services – Salaries

100 Personnel Services – Salaries

119,980.80

Total Personnel Services – Salaries

\$119,980.80

200 Personnel Services – Employee Benefits

210 Group Insurance – Contracted Provider

54,205.33

220 Social Security Contributions

9,126.96

230 PSERS Retirement Contributions

41,141.34

250 Unemployment Compensation

240.10

260 Workers' Compensation

599.95

291 Other Retirement Plans

2,585.70

Total Personnel Services – Employee Benefits

\$107,899.38

Total 2610 Supervision of Operation and Maintenance of Plant Services

\$227,880.18

General Fund (10)

2611 Supervision of Operation and Maintenance of Plant Services – Head of Component

Elementary

Secondary

Federal

Total

100 Personnel Services – Salaries

100 Personnel Services – Salaries

119,980.80

Total Personnel Services – Salaries

\$119,980.80

200 Personnel Services – Employee Benefits

210 Group Insurance – Contracted Provider

54,205.33

220 Social Security Contributions

9,126.96

230 PSERS Retirement Contributions

41,141.34

250 Unemployment Compensation

240.10

260 Workers' Compensation

599.95

291 Other Retirement Plans

2,585.70

Total Personnel Services – Employee Benefits

\$107,899.38

Total 2611 Supervision of Operation and Maintenance of Plant Services – Head of Component

\$227,880.18

General Fund (10)

2620 Operation of Buildings Services

100 Personnel Services – Salaries

100 Personnel Services – Salaries

Total Personnel Services – Salaries

200 Personnel Services – Employee Benefits

210 Group Insurance – Contracted Provider

220 Social Security Contributions

230 PSERS Retirement Contributions

250 Unemployment Compensation

260 Workers' Compensation

291 Other Retirement Plans

Total Personnel Services – Employee Benefits

300 Purchased Professional and Technical Services

330 Other Professional Services

Total Purchased Professional and Technical Services

400 Purchased Property Services

410 Cleaning Services

420 Utility Services

430 Repairs and Maintenance Services

440 Rentals

Total Purchased Property Services

500 Other Purchased Services

523 General Property and Liability Insurance

529 Other Insurance

580 Travel

Total Other Purchased Services

600 Supplies

610 General Supplies

620 Energy

Total Supplies

700 Property

752 Capital Equipment – Original and Additional

Total Property

800 Other Objects

810 Dues and Fees

Total Other Objects

Total 2620 Operation of Buildings Services

	<u>Elementary</u>	<u>Secondary</u>	<u>Federal</u>	<u>Total</u>
			2,304.00	1,751,049.81
			\$2,304.00	\$1,751,049.81
				702,580.66
			87.54	131,623.34
			374.44	595,481.55
			4.61	3,502.27
			11.52	8,755.97
				15,166.08
			\$478.11	\$1,457,109.87
				3,879.76
				\$3,879.76
				73,600.88
				743,331.34
				631,957.11
				1,227.00
				\$1,450,116.33
				212,801.00
				35,467.00
				130.04
				\$248,398.04
	106,080.15	80,317.02	14,876.01	201,273.18
				232,276.97
	\$106,080.15	\$80,317.02	\$14,876.01	\$433,550.15
				46,699.81
				\$46,699.81
				295.75
				\$295.75
	\$106,080.15	\$80,317.02	\$17,658.12	\$5,391,099.52

General Fund (10)

	<u>Elementary</u>	<u>Secondary</u>	<u>Federal</u>	<u>Total</u>
2660 Safety and Security Services				
100 Personnel Services – Salaries				
100 Personnel Services – Salaries				6,720.00
Total Personnel Services – Salaries				\$6,720.00
200 Personnel Services – Employee Benefits				
220 Social Security Contributions				595.32
230 PSERS Retirement Contributions				2,400.84
250 Unemployment Compensation				13.54
260 Workers' Compensation				33.81
Total Personnel Services – Employee Benefits				\$3,043.51
300 Purchased Professional and Technical Services				
350 Security / Safety Services			1,627.08	96,803.69
Total Purchased Professional and Technical Services			\$1,627.08	\$96,803.69
Total 2660 Safety and Security Services			\$1,627.08	\$106,567.20

General Fund (10)

	<u>Elementary</u>	<u>Secondary</u>	<u>Federal</u>	<u>Total</u>
2700 Student Transportation Services				
100 Personnel Services – Salaries				
100 Personnel Services – Salaries				94,031.06
Total Personnel Services – Salaries				\$94,031.06
200 Personnel Services – Employee Benefits				
210 Group Insurance – Contracted Provider				13,245.95
220 Social Security Contributions				7,141.28
230 PSERS Retirement Contributions				31,472.16
250 Unemployment Compensation				188.07
260 Workers' Compensation				470.14
291 Other Retirement Plans				16,808.86
Total Personnel Services – Employee Benefits				\$69,326.46
300 Purchased Professional and Technical Services				
390 Other Purchased Professional and Technical Services				3,668.55
Total Purchased Professional and Technical Services				\$3,668.55
500 Other Purchased Services				
513 Contracted Carriers			3,822.64	4,824,383.97
516 Student Transportation Services From the IU				54,613.57
530 Communications				133.06
580 Travel				75.39
Total Other Purchased Services			\$3,822.64	\$4,879,205.99
600 Supplies				
610 General Supplies				880.00
620 Energy				1,632.18
Total Supplies				\$2,512.18
700 Property				
758 Capitalized Technology Software - Original				42,640.00
Total Property				\$42,640.00
800 Other Objects				
810 Dues and Fees				152.00
Total Other Objects				\$152.00
Total 2700 Student Transportation Services			\$3,822.64	\$5,091,536.24

General Fund (10)

2720 Vehicle Operation Services

100 Personnel Services – Salaries

	<u>Elementary</u>	<u>Secondary</u>	<u>Federal</u>	<u>Total</u>
100 Personnel Services – Salaries				94,031.06
Total Personnel Services – Salaries				\$94,031.06
200 Personnel Services – Employee Benefits				
210 Group Insurance – Contracted Provider				13,245.95
220 Social Security Contributions				7,141.28
230 PSERS Retirement Contributions				31,472.16
250 Unemployment Compensation				188.07
260 Workers' Compensation				470.14
291 Other Retirement Plans				16,808.86
Total Personnel Services – Employee Benefits				\$69,326.46
300 Purchased Professional and Technical Services				
390 Other Purchased Professional and Technical Services				3,668.55
Total Purchased Professional and Technical Services				\$3,668.55
500 Other Purchased Services				
513 Contracted Carriers			3,822.64	4,014,427.01
516 Student Transportation Services From the IU				54,613.57
530 Communications				133.06
580 Travel				75.39
Total Other Purchased Services			\$3,822.64	\$4,069,249.03
600 Supplies				
610 General Supplies				880.00
620 Energy				1,632.18
Total Supplies				\$2,512.18
700 Property				
758 Capitalized Technology Software - Original				42,640.00
Total Property				\$42,640.00
800 Other Objects				
810 Dues and Fees				152.00
Total Other Objects				\$152.00
Total 2720 Vehicle Operation Services			\$3,822.64	\$4,281,579.28

General Fund (10)

	<u>Elementary</u>	<u>Secondary</u>	<u>Federal</u>	<u>Total</u>
2750 Nonpublic Transportation				
500 <u>Other Purchased Services</u>				
513 Contracted Carriers				809,956.96
Total Other Purchased Services				\$809,956.96
Total 2750 Nonpublic Transportation				\$809,956.96

General Fund (10)

	<u>Elementary</u>	<u>Secondary</u>	<u>Federal</u>	<u>Total</u>
2800 Support Services – Central				
100 Personnel Services – Salaries				
100 Personnel Services – Salaries			84,839.18	635,883.95
Total Personnel Services – Salaries			\$84,839.18	\$635,883.95
200 Personnel Services – Employee Benefits				
210 Group Insurance – Contracted Provider			17,736.58	162,462.56
220 Social Security Contributions			6,031.68	48,012.42
230 PSERS Retirement Contributions			14,545.64	203,458.70
240 Tuition Reimbursement				49,209.00
250 Unemployment Compensation			169.74	1,271.93
260 Workers' Compensation			424.22	3,179.43
Total Personnel Services – Employee Benefits			\$38,907.86	\$467,594.04
300 Purchased Professional and Technical Services				
340 Technical Services				130,622.17
Total Purchased Professional and Technical Services				\$130,622.17
400 Purchased Property Services				
430 Repairs and Maintenance Services				5,229.04
Total Purchased Property Services				\$5,229.04
500 Other Purchased Services				
530 Communications			46.80	46.80
550 Printing and Binding			2.99	2.99
580 Travel			686.01	6,454.20
Total Other Purchased Services			\$735.80	\$6,503.99
600 Supplies				
610 General Supplies			5,160.70	65,072.67
640 Books and Periodicals				67,006.16
Total Supplies			\$5,160.70	\$132,078.83
700 Property				
768 Capitalized Technology Software - Replacement				(22,834.00)
Total Property				(\$22,834.00)
800 Other Objects				
810 Dues and Fees			100.00	1,733.79
Total Other Objects			\$100.00	\$1,733.79
Total 2800 Support Services – Central			\$129,743.54	\$1,356,811.81

General Fund (10)

	<u>Elementary</u>	<u>Secondary</u>	<u>Federal</u>	<u>Total</u>
2810 Planning, Research, Development and Evaluation Services				
100 Personnel Services – Salaries				
100 Personnel Services – Salaries			6,510.00	557,554.77
Total Personnel Services – Salaries			\$6,510.00	\$557,554.77
200 Personnel Services – Employee Benefits				
210 Group Insurance – Contracted Provider				144,725.98
220 Social Security Contributions			247.30	42,228.04
230 PSERS Retirement Contributions			1,116.14	190,029.20
250 Unemployment Compensation			13.02	1,115.21
260 Workers' Compensation			32.55	2,787.76
Total Personnel Services – Employee Benefits			\$1,409.01	\$380,886.19
300 Purchased Professional and Technical Services				
340 Technical Services				130,622.17
Total Purchased Professional and Technical Services				\$130,622.17
400 Purchased Property Services				
430 Repairs and Maintenance Services				5,229.04
Total Purchased Property Services				\$5,229.04
500 Other Purchased Services				
580 Travel				5,768.19
Total Other Purchased Services				\$5,768.19
600 Supplies				
610 General Supplies			5,000.01	64,911.98
640 Books and Periodicals				67,006.16
Total Supplies			\$5,000.01	\$131,918.14
700 Property				
768 Capitalized Technology Software - Replacement				(22,834.00)
Total Property				(\$22,834.00)
800 Other Objects				
810 Dues and Fees				1,633.79
Total Other Objects				\$1,633.79
Total 2810 Planning, Research, Development and Evaluation Services			\$12,919.02	\$1,190,778.29

General Fund (10)

2830 Staff Services

Elementary

Secondary

Federal

Total

200 Personnel Services – Employee Benefits

240 Tuition Reimbursement

49,209.00

Total Personnel Services – Employee Benefits

\$49,209.00

Total 2830 Staff Services

\$49,209.00

General Fund (10)

2834 Staff Development Services – Non-Instructional, Certified Staff Only

Elementary

Secondary

Federal

Total

200 Personnel Services – Employee Benefits

240 Tuition Reimbursement

49,209.00

Total Personnel Services – Employee Benefits

\$49,209.00

Total 2834 Staff Development Services – Non-Instructional, Certified Staff Only

\$49,209.00

General Fund (10)

3000 Operation of Non-Instructional Services	<u>Total</u>
100 Personnel Services – Salaries	
100 Personnel Services – Salaries	447,607.40
Total Personnel Services – Salaries	\$447,607.40
200 Personnel Services – Employee Benefits	
210 Group Insurance – Contracted Provider	25,399.96
220 Social Security Contributions	33,656.02
230 PSERS Retirement Contributions	148,993.40
250 Unemployment Compensation	895.39
260 Workers’ Compensation	2,237.76
Total Personnel Services – Employee Benefits	\$211,182.53
300 Purchased Professional and Technical Services	
329 Professional Educational Services – Other	54.60
390 Other Purchased Professional and Technical Services	104,360.53
Total Purchased Professional and Technical Services	\$104,415.13
500 Other Purchased Services	
510 Student Transportation Services	115,090.67
580 Travel	5,599.92
591 Services Purchased Locally	32,929.42
Total Other Purchased Services	\$153,620.01
600 Supplies	
610 General Supplies	95,198.28
Total Supplies	\$95,198.28
800 Other Objects	
810 Dues and Fees	22,946.52
860 Grants To Municipal and Community Service Organizations	966.49
Total Other Objects	\$23,913.01
Total 3000 Operation of Non-Instructional Services	\$1,035,936.36

General Fund (10)

3200 Student Activities

	<u>Elementary</u>	<u>Secondary</u>	<u>Federal</u>	<u>Total</u>
100 Personnel Services – Salaries				
100 Personnel Services – Salaries			980.10	436,283.03
Total Personnel Services – Salaries			\$980.10	\$436,283.03
200 Personnel Services – Employee Benefits				
210 Group Insurance – Contracted Provider				25,399.96
220 Social Security Contributions			37.49	32,804.41
230 PSERS Retirement Contributions			169.11	146,995.67
250 Unemployment Compensation			1.96	872.90
260 Workers' Compensation			4.90	2,181.13
Total Personnel Services – Employee Benefits			\$213.46	\$208,254.07
300 Purchased Professional and Technical Services				
390 Other Purchased Professional and Technical Services				104,360.53
Total Purchased Professional and Technical Services				\$104,360.53
500 Other Purchased Services				
510 Student Transportation Services				115,090.67
580 Travel				5,599.92
591 Services Purchased Locally				32,929.42
Total Other Purchased Services				\$153,620.01
600 Supplies				
610 General Supplies				89,567.86
Total Supplies				\$89,567.86
800 Other Objects				
810 Dues and Fees				22,946.52
Total Other Objects				\$22,946.52
Total 3200 Student Activities			\$1,193.56	\$1,015,032.02

General Fund (10)

	<u>Elementary</u>	<u>Secondary</u>	<u>Federal</u>	<u>Total</u>
3300 Community Services				
100 Personnel Services – Salaries				
100 Personnel Services – Salaries			11,324.37	11,324.37
Total Personnel Services – Salaries			\$11,324.37	\$11,324.37
200 Personnel Services – Employee Benefits				
220 Social Security Contributions			851.61	851.61
230 PSERS Retirement Contributions			1,997.73	1,997.73
250 Unemployment Compensation			22.49	22.49
260 Workers' Compensation			56.63	56.63
Total Personnel Services – Employee Benefits			\$2,928.46	\$2,928.46
300 Purchased Professional and Technical Services				
329 Professional Educational Services – Other			54.60	54.60
Total Purchased Professional and Technical Services			\$54.60	\$54.60
600 Supplies				
610 General Supplies			5,630.42	5,630.42
Total Supplies			\$5,630.42	\$5,630.42
800 Other Objects				
860 Grants To Municipal and Community Service Organizations				966.49
Total Other Objects				\$966.49
Total 3300 Community Services			\$19,937.85	\$20,904.34

General Fund (10)

5000 Other Expenditures and Financing Uses

Total

800 Other Objects

830 Interest 3,255,142.48

880 Refunds of Prior Years' Receipts 5,859.48

Total Other Objects \$3,261,001.96

900 Other Uses of Funds

910 Redemption of Principal 5,898,223.47

939 Other Fund Transfers 3,545,420.04

Total Other Uses of Funds \$9,443,643.51

Total 5000 Other Expenditures and Financing Uses \$12,704,645.47

General Fund (10)

5100 Debt Service / Other Expenditures and Financing Uses

Elementary

Secondary

Federal

Total

800 Other Objects

830 Interest

3,255,142.48

880 Refunds of Prior Years' Receipts

5,859.48

Total Other Objects

\$3,261,001.96

900 Other Uses of Funds

910 Redemption of Principal

5,898,223.47

Total Other Uses of Funds

\$5,898,223.47

Total 5100 Debt Service / Other Expenditures and Financing Uses

\$9,159,225.43

LEA : 111444602 Mifflin County SD

Printed 11/4/2020 1:13:12 PM

General Fund (10)

5110 Debt Service

Elementary

Secondary

Federal

Total

800 Other Objects

830 Interest

3,255,142.48

Total Other Objects

\$3,255,142.48

900 Other Uses of Funds

910 Redemption of Principal

5,898,223.47

Total Other Uses of Funds

\$5,898,223.47

Total 5110 Debt Service

\$9,153,365.95

General Fund (10)

5130 Refund of Prior Year Revenues / Receipts

Elementary

Secondary

Federal

Total

800 Other Objects

880 Refunds of Prior Years' Receipts

5,859.48

Total Other Objects

\$5,859.48

Total 5130 Refund of Prior Year Revenues / Receipts

\$5,859.48

General Fund (10)

5200 Interfund Transfers – Out

Elementary

Secondary

Federal

Total

900 Other Uses of Funds

939 Other Fund Transfers

3,545,420.04

Total Other Uses of Funds

\$3,545,420.04

Total 5200 Interfund Transfers – Out

\$3,545,420.04

LEA : 111444602 Mifflin County SD

Printed 11/4/2020 1:13:12 PM

General Fund (10)

	<u>Elementary</u>	<u>Secondary</u>	<u>Federal</u>	<u>Total</u>
5230 Capital Projects Fund Transfers				
900 Other Uses of Funds				
939 Other Fund Transfers				3,318,568.64
Total Other Uses of Funds				\$3,318,568.64
Total 5230 Capital Projects Fund Transfers				\$3,318,568.64

LEA : 111444602 Mifflin County SD

Printed 11/4/2020 1:13:12 PM

General Fund (10)

	<u>Elementary</u>	<u>Secondary</u>	<u>Federal</u>	<u>Total</u>
5270 Trust and Custodial Fund Transfer				
900 <u>Other Uses of Funds</u>				
939 Other Fund Transfers				226,851.40
Total Other Uses of Funds				\$226,851.40
Total 5270 Trust and Custodial Fund Transfer				\$226,851.40

LEA : 111444602 Mifflin County SD

Printed 11/4/2020 1:12:56 PM

Other Capital Projects Fund (39)

2000 Support Services

600 Supplies

650 Supplies & Fees – Technology Related

665,509.25

Total Supplies

\$665,509.25

700 Property

752 Capital Equipment – Original and Additional

102,501.00

766 Capitalized Technology Equipment – Replacement

10,231.50

Total Property

\$112,732.50

Total 2000 Support Services

\$778,241.75

LEA : 111444602 Mifflin County SD

Printed 11/4/2020 1:12:56 PM

Other Capital Projects Fund (39)

2600 Operation and Maintenance of Plant Services

Elementary

Secondary

Federal

Total

700 Property

752 Capital Equipment – Original and Additional

102,501.00

Total Property

\$102,501.00

Total 2600 Operation and Maintenance of Plant Services

\$102,501.00

LEA : 111444602 Mifflin County SD

Printed 11/4/2020 1:12:56 PM

Other Capital Projects Fund (39)

2620 Operation of Buildings Services

Elementary

Secondary

Federal

Total

700 Property

752 Capital Equipment – Original and Additional

102,501.00

Total Property

\$102,501.00

Total 2620 Operation of Buildings Services

\$102,501.00

LEA : 111444602 Mifflin County SD

Printed 11/4/2020 1:12:56 PM

Other Capital Projects Fund (39)

2800 Support Services – Central

Elementary

Secondary

Federal

Total

600 Supplies

650 Supplies & Fees – Technology Related

665,509.25

Total Supplies

\$665,509.25

700 Property

766 Capitalized Technology Equipment – Replacement

10,231.50

Total Property

\$10,231.50

Total 2800 Support Services – Central

\$675,740.75

Other Capital Projects Fund (39)

2810 Planning, Research, Development and Evaluation Services

Elementary

Secondary

Federal

Total

600 Supplies

650 Supplies & Fees – Technology Related

665,509.25

Total Supplies

\$665,509.25

700 Property

766 Capitalized Technology Equipment – Replacement

10,231.50

Total Property

\$10,231.50

Total 2810 Planning, Research, Development and Evaluation Services

\$675,740.75

Other Capital Projects Fund (39)

4000 Facilities Acquisition, Construction and Improvement Services

Total

400 Purchased Property Services

450 Construction Services

6,701,200.50

Total Purchased Property Services

\$6,701,200.50

Total 4000 Facilities Acquisition, Construction and Improvement Services

\$6,701,200.50

LEA : 111444602 Mifflin County SD

Printed 11/4/2020 1:13:06 PM

Other Capital Projects Fund (39)

4200 Existing Site Improvement Services

Elementary

Secondary

Federal

Total

400 Purchased Property Services

450 Construction Services

273,608.50

Total Purchased Property Services

\$273,608.50

Total 4200 Existing Site Improvement Services

\$273,608.50

LEA : 111444602 Mifflin County SD

Printed 11/4/2020 1:13:06 PM

Other Capital Projects Fund (39)

4600 Existing Building Improvement Services

Elementary

Secondary

Federal

Total

400 Purchased Property Services

450 Construction Services

6,427,592.00

Total Purchased Property Services

\$6,427,592.00

Total 4600 Existing Building Improvement Services

\$6,427,592.00

Other Capital Projects Fund (39)

5000 Other Expenditures and Financing Uses

Total

900 Other Uses of Funds

939 Other Fund Transfers

1,540,993.06

Total Other Uses of Funds

\$1,540,993.06

Total 5000 Other Expenditures and Financing Uses

\$1,540,993.06

LEA : 111444602 Mifflin County SD

Printed 11/4/2020 1:13:14 PM

Other Capital Projects Fund (39)

5200 Interfund Transfers – Out

Elementary

Secondary

Federal

Total

900 Other Uses of Funds

939 Other Fund Transfers

1,540,993.06

Total Other Uses of Funds

\$1,540,993.06

Total 5200 Interfund Transfers – Out

\$1,540,993.06

LEA : 111444602 Mifflin County SD

Printed 11/4/2020 1:13:14 PM

Other Capital Projects Fund (39)

5210 General Fund Transfers

Elementary

Secondary

Federal

Total

900 Other Uses of Funds

939 Other Fund Transfers

1,540,993.06

Total Other Uses of Funds

\$1,540,993.06

Total 5210 General Fund Transfers

\$1,540,993.06

LEA : 111444602 Mifflin County SD

Printed 11/4/2020 1:12:58 PM

Debt Service Fund (40)

2000 Support Services

800 Other Objects

810 Dues and Fees

Total Other Objects

Total 2000 Support Services

Total

158,272.46

\$158,272.46

\$158,272.46

Debt Service Fund (40)

2300 Support Services – Administration

Elementary

Secondary

Federal

Total

800 Other Objects

810 Dues and Fees

158,272.46

Total Other Objects

\$158,272.46

Total 2300 Support Services – Administration

\$158,272.46

LEA : 111444602 Mifflin County SD

Printed 11/4/2020 1:12:58 PM

Debt Service Fund (40)

2390 Other Administration Services

Elementary

Secondary

Federal

Total

800 Other Objects

810 Dues and Fees

158,272.46

Total Other Objects

\$158,272.46

Total 2390 Other Administration Services

\$158,272.46

Debt Service Fund (40)

5000 Other Expenditures and Financing Uses

Total

800 Other Objects

830 Interest 55,622.32

Total Other Objects

\$55,622.32

900 Other Uses of Funds

910 Redemption of Principal 15,620,000.00

990 Miscellaneous Other Uses of Funds 128,115.50

Total Other Uses of Funds

\$15,748,115.50

Total 5000 Other Expenditures and Financing Uses

\$15,803,737.82

Debt Service Fund (40)

5100 Debt Service / Other Expenditures and Financing Uses

Elementary

Secondary

Federal

Total

800 Other Objects

830 Interest

55,622.32

Total Other Objects

\$55,622.32

900 Other Uses of Funds

910 Redemption of Principal

15,620,000.00

990 Miscellaneous Other Uses of Funds

128,115.50

Total Other Uses of Funds

\$15,748,115.50

Total 5100 Debt Service / Other Expenditures and Financing Uses

\$15,803,737.82

Debt Service Fund (40)

	<u>Elementary</u>	<u>Secondary</u>	<u>Federal</u>	<u>Total</u>
5120 Debt Service – Refunded Bonds				
800 <u>Other Objects</u>				
830 Interest				55,622.32
Total Other Objects				\$55,622.32
900 <u>Other Uses of Funds</u>				
910 Redemption of Principal				15,620,000.00
Total Other Uses of Funds				\$15,620,000.00
Total 5120 Debt Service – Refunded Bonds				\$15,675,622.32

LEA : 111444602 Mifflin County SD

Printed 11/4/2020 1:13:16 PM

Debt Service Fund (40)

5150 Bond Discounts

Elementary

Secondary

Federal

Total

900 Other Uses of Funds

990 Miscellaneous Other Uses of Funds

128,115.50

Total Other Uses of Funds

\$128,115.50

Total 5150 Bond Discounts

\$128,115.50

	<u>General Fund(10)</u>	<u>Student Sponsored Activity Fund(21)</u>	<u>Public Purpose Trust(27)</u>	<u>Other Compt Approved (28)</u>	<u>Athletic / Activity(29)</u>
1000 Instruction					
1100 Regular Programs - Elementary / Secondary	28,361,645.13				
1200 Special Programs - Elementary / Secondary	11,563,768.61				
1300 Vocational Education	3,527,004.97				
1400 Other Instructional Programs - Elementary / Secondary	978,893.48				
1500 Nonpublic School Programs	90,602.90				
Total Instruction	\$44,521,915.09				
2000 Support Services					
2100 Support Services - Students	2,127,160.54				
2200 Support Services - Instructional Staff	1,666,591.86				
2300 Support Services - Administration	4,429,584.85				
2400 Support Services - Pupil Health	683,002.05				
2500 Support Services - Business	765,670.19				
2600 Operation and Maintenance of Plant Services	5,725,546.90				
2700 Student Transportation Services	5,091,536.24				
2800 Support Services - Central	1,356,811.81				
Total Support Services	\$21,845,904.44				
3000 Operation of Non-Instructional Services					
3200 Student Activities	1,015,032.02				
3300 Community Services	20,904.34				
Total Operation of Non-Instructional Services	\$1,035,936.36				
4000 Facilities Acquisition, Construction and Improvement Services					
4200 Existing Site Improvement Services					
4600 Existing Building Improvement Services					
Total Facilities Acquisition, Construction and Improvement Services					
5000 Other Expenditures and Financing Uses					
5100 Debt Service / Other Expenditures and Financing Uses	9,159,225.43				
5200 Interfund Transfers - Out	3,545,420.04				
Total Other Expenditures and Financing Uses	\$12,704,645.47				
TOTAL ACTUAL EXPENDITURES & OTHER FINANCING USES	\$80,108,401.36				

	<u>Capital Reserve (690, 1850)(31)</u>	<u>Capital Reserve (1431)(32)</u>	<u>Other Capital Projects Fund(39)</u>	<u>Debt Service(40)</u>	<u>Permanent(90)</u>
1000 Instruction					
1100 Regular Programs - Elementary / Secondary					
1200 Special Programs - Elementary / Secondary					
1300 Vocational Education					
1400 Other Instructional Programs - Elementary / Secondary					
1500 Nonpublic School Programs					
Total Instruction					
2000 Support Services					
2100 Support Services - Students					
2200 Support Services - Instructional Staff					
2300 Support Services - Administration				158,272.46	
2400 Support Services - Pupil Health					
2500 Support Services - Business					
2600 Operation and Maintenance of Plant Services			102,501.00		
2700 Student Transportation Services					
2800 Support Services - Central			675,740.75		
Total Support Services			\$778,241.75	\$158,272.46	
3000 Operation of Non-Instructional Services					
3200 Student Activities					
3300 Community Services					
Total Operation of Non-Instructional Services					
4000 Facilities Acquisition, Construction and Improvement Services					
4200 Existing Site Improvement Services			273,608.50		
4600 Existing Building Improvement Services			6,427,592.00		
Total Facilities Acquisition, Construction and Improvement Services			\$6,701,200.50		
5000 Other Expenditures and Financing Uses					
5100 Debt Service / Other Expenditures and Financing Uses				15,803,737.82	
5200 Interfund Transfers - Out			1,540,993.06		
Total Other Expenditures and Financing Uses			\$1,540,993.06	\$15,803,737.82	
TOTAL ACTUAL EXPENDITURES & OTHER FINANCING USES			\$9,020,435.31	\$15,962,010.28	

	<u>Total</u>
1000 Instruction	
1100 Regular Programs - Elementary / Secondary	28,361,645.13
1200 Special Programs - Elementary / Secondary	11,563,768.61
1300 Vocational Education	3,527,004.97
1400 Other Instructional Programs - Elementary / Secondary	978,893.48
1500 Nonpublic School Programs	90,602.90
Total Instruction	\$44,521,915.09
2000 Support Services	
2100 Support Services - Students	2,127,160.54
2200 Support Services - Instructional Staff	1,666,591.86
2300 Support Services - Administration	4,587,857.31
2400 Support Services - Pupil Health	683,002.05
2500 Support Services - Business	765,670.19
2600 Operation and Maintenance of Plant Services	5,828,047.90
2700 Student Transportation Services	5,091,536.24
2800 Support Services - Central	2,032,552.56
Total Support Services	\$22,782,418.65
3000 Operation of Non-Instructional Services	
3200 Student Activities	1,015,032.02
3300 Community Services	20,904.34
Total Operation of Non-Instructional Services	\$1,035,936.36
4000 Facilities Acquisition, Construction and Improvement Services	
4200 Existing Site Improvement Services	273,608.50
4600 Existing Building Improvement Services	6,427,592.00
Total Facilities Acquisition, Construction and Improvement Services	\$6,701,200.50
5000 Other Expenditures and Financing Uses	
5100 Debt Service / Other Expenditures and Financing Uses	24,962,963.25
5200 Interfund Transfers - Out	5,086,413.10
Total Other Expenditures and Financing Uses	\$30,049,376.35
TOTAL ACTUAL EXPENDITURES & OTHER FINANCING USES	\$105,090,846.95

LEA : 111444602 Mifflin County SD

Printed 11/4/2020 1:13:44 PM

PSERS Salary Data (Salary Data should relate to the General Fund only)

Amount Description	Amount
Total Salary Base for salaries subject to PSERS withholding	28,861,104.00
Total Federally Funded salaries subject to PSERS withholding	2,026,849.00
	<hr/>

Title I Expenditure Data

Amount Description	Amount
Expenditures Funded with Current Title I Funds	1,565,484.00
Expenditures Funded with Carry over Title I Funds	654,853.00
Total Title I Expenditure Data	<hr/> \$2,220,337.00 <hr/>

Benefits for Staff Relative to Collective Bargaining Agreements

	OBJECT	COVERED	NOT COVERED	TOTAL
10 General Fund	No Self Insurance data to report			
	211 Medical Insurance	7,080,626.00	697,058.00	7,777,684.00
	212 Dental Insurance	272,867.00	29,726.00	302,593.00
	215 Eye Care Insurance	46,162.00	4,347.00	50,509.00
	216 Prescription Insurance			
	271 Self-Insurance Medical Benefits			
	272 Self-Insurance Dental Benefits			
	275 Self-Insurance Eye Care Benefits			
	276 Self-Insurance Prescription Benefits			
	FUND TOTAL	\$7,399,655.00	\$731,131.00	\$8,130,786.00
50 Enterprise Fund	No Self Insurance data to report			
	211 Medical Insurance	210,443.00		210,443.00
	212 Dental Insurance	10,655.00		10,655.00
	215 Eye Care Insurance	1,988.00		1,988.00
	216 Prescription Insurance			
	271 Self-Insurance Medical Benefits			
	272 Self-Insurance Dental Benefits			
	275 Self-Insurance Eye Care Benefits			
	276 Self-Insurance Prescription Benefits			
	FUND TOTAL	\$223,086.00		\$223,086.00
60 Internal Service Fund	No Self Insurance data to report			
	211 Medical Insurance			
	212 Dental Insurance			
	215 Eye Care Insurance			
	216 Prescription Insurance			
	271 Self-Insurance Medical Benefits			
	272 Self-Insurance Dental Benefits			
	275 Self-Insurance Eye Care Benefits			
	276 Self-Insurance Prescription Benefits			
	FUND TOTAL			
Total of All Funds		\$7,622,741.00	\$731,131.00	\$8,353,872.00

LEA : 111444602 Mifflin County SD

Printed 11/4/2020 1:13:51 PM

Function	Special Education (Prior Year)	Nonspecial Education (Prior Year)	Total (Prior Year)	Special Education (Current Year)	Nonspecial Education (Current Year)	Total (Current Year)
2120 Guidance Services	193,556.39	1,096,819.55	1,290,375.94	217,679.80	1,147,155.77	1,364,835.57
2140 Psychological Services	295,806.42	98,602.14	394,408.56	419,743.54	139,914.51	559,658.05
2150 Speech Pathology and Audiology Services						
2160 Social Work Services	11,293.11	63,994.26	75,287.37	14,844.13	78,227.45	93,071.58
2260 Instruction and Curriculum Development Services	87,255.20	494,446.13	581,701.33	98,420.94	518,670.79	617,091.73
2350 Legal and Accounting Services	42,490.42	44,590.29	87,080.71	25,962.50	93,407.75	119,370.25
2420 Medical Services						
2440 Nursing Services	98,628.85	558,896.84	657,525.69	106,709.01	562,348.26	669,057.27
2700 Student Transportation Services	720,785.43	4,084,450.80	4,805,236.23	812,057.24	4,279,479.00	5,091,536.24
Total	\$1,449,815.82	\$6,441,800.01	\$7,891,615.83	\$1,695,417.16	\$6,819,203.53	\$8,514,620.69

LEA : 111444602 Mifflin County SD

Printed 11/4/2020 1:13:56 PM

(PRINCIPAL AMOUNTS ONLY)

GOVERNMENTAL FUNDS/ ACTIVITIES

	Short-Term Borrowing	General Obligation Bonds/Notes	Authority Building Obligations	Other Long-Term Debt	Other Post-Employment Benefits (OPEB)	Compensated Absences	Net Pension Liability	Total
1. Debt at Beginning of Fiscal Year		89,060,000.00		7,717,560.34	14,376,042.00	2,110,205.00	92,874,595.00	206,138,402.34
2. Additional Debt Incurred During Year		14,395,000.00		1,442,572.00	387,206.00	128,665.00		16,353,443.00
3. Retirements and Repayments		20,035,000.00		2,290,732.34			5,188,087.00	27,513,819.34
4. Debt at End of Fiscal Year		83,420,000.00		6,869,400.00	14,763,248.00	2,238,870.00	87,686,508.00	194,978,026.00
5. Accreted Interest at End Of Fiscal Year								
6. Total Debt and Accreted Interest		83,420,000.00		6,869,400.00	14,763,248.00	2,238,870.00	87,686,508.00	194,978,026.00
7. Current Portion P&I - Due within 1 year		7,157,533.08						7,157,533.08
8. Interest Paid during current fiscal year		3,252,995.32		57,769.59				3,310,764.91

(PRINCIPAL AMOUNTS ONLY)

PROPRIETARY FUNDS

	Short-Term Borrowing	General Obligation Bonds/Notes	Authority Building Obligations	Other Long-Term Debt	Other Post-Employment Benefits (OPEB)	Compensated Absences	Net Pension Liability	Total
1. Debt at Beginning of Fiscal Year					440,360.00	77,278.00	2,738,992.44	3,256,630.44
2. Additional Debt Incurred During Year								
3. Retirements and Repayments					22,299.00	5,448.00	255,911.44	283,658.44
4. Debt at End of Fiscal Year					418,061.00	71,830.00	2,483,081.00	2,972,972.00
5. Accreted Interest at End Of Fiscal Year								
6. Total Debt and Accreted Interest					418,061.00	71,830.00	2,483,081.00	2,972,972.00
7. Current Portion P&I - Due within 1 year								
8. Interest Paid during current fiscal year								

Total Principal and Interest Payments Made by Your School - All Funds

Function	Fund		Principal (910)	Principal (920)	Interest (830)	Total (Principal +Interest)	Misc Other Uses (990)
5110	10	General Fund	5,898,223.47		3,255,142.48	9,153,365.95	
5110	20	Special Revenue Funds					
5110	30	Capital Projects Funds					
5110	40	Debt Service Fund					
5110	90	Permanent Fund					
5120	10	General Fund					
5120	20	Special Revenue Funds					
5120	30	Capital Projects Funds					
5120	40	Debt Service Fund	15,620,000.00		55,622.32	15,675,622.32	
Total Debt Payments - Governmental Funds			\$21,518,223.47		\$3,310,764.80	\$24,828,988.27	

Function	Fund		Principal (910)	Principal (920)	Interest (830)	Total (Principal +Interest)	Misc Other Uses (990)
5110	50	Enterprise Fund					
5110	60	Internal Service Fund					
5120	50	Enterprise Fund					
5120	60	Internal Service Fund					
Total Debt Payments - Proprietary Funds							

LEA : 111444602 Mifflin County SD

Printed 11/4/2020 1:13:56 PM

Debt Details
Governmental Funds/ Activities

Debt Category	Debt Issue Date (MM/YYYY)	Debt at Beginning of Fiscal Year	Principal Amounts Only		Debt at End of Fiscal Year	Current Portion Due Within One Year (Principal and Interest)	Interest Paid During Fiscal Year
			Additions	Reductions / Repayments			
General Obligation Bonds/Notes – CIB	03/2020		14,395,000.00		14,395,000.00	496,939.08	
General Obligation Bonds/Notes – CIB	05/2019	8,200,000.00			8,200,000.00	332,195.00	254,520.00
General Obligation Bonds/Notes – CIB	06/2019	8,270,000.00		290,000.00	7,980,000.00	681,368.00	192,695.00
General Obligation Bonds/Notes – CIB	04/2018	9,995,000.00		10,000.00	9,985,000.00	337,306.00	327,509.00
General Obligation Bonds/Notes – CIB	12/2016	23,080,000.00		1,550,000.00	21,530,000.00	2,593,550.00	1,051,600.00
General Obligation Bonds/Notes – CIB	03/2016	23,085,000.00		1,755,000.00	21,330,000.00	2,716,175.00	1,016,450.00
General Obligation Bonds/Notes – CIB	02/2015	4,440,000.00		4,440,000.00			110,421.20
General Obligation Bonds/Notes – CIB	11/2014	6,170,000.00		6,170,000.00			147,066.88
General Obligation Bonds/Notes – CIB	12/2012	5,820,000.00		5,820,000.00			152,733.24
Extended Term Financing Agreements		1,483,223.34		1,483,223.34			57,769.59
Other Long Term Debt/Liabilities		6,234,337.00	1,442,572.00	807,509.00	6,869,400.00		
Compensated Absences		2,110,205.00	128,665.00		2,238,870.00		
Other Post-Employment Benefits (OPEB)		14,376,042.00	387,206.00		14,763,248.00		
Net Pension Liability		92,874,595.00		5,188,087.00	87,686,508.00		
Totals for Debt Entered:		\$206,138,402.34	\$16,353,443.00	\$27,513,819.34	\$194,978,026.00	\$7,157,533.08	\$3,310,764.91

Bond Details
Proprietary Funds

Debt Category	Debt Issue Date (MM/YYYY)	Debt at Beginning of Fiscal Year	Principal Amounts Only		Debt at End of Fiscal Year	Current Portion Due Within One Year (Principal and Interest)	Interest Paid During Fiscal Year
			Additions	Reductions / Repayments			
Compensated Absences		77,278.00		5,448.00	71,830.00		
Other Post-Employment Benefits (OPEB)		440,360.00		22,299.00	418,061.00		
Net Pension Liability		2,738,992.44		255,911.44	2,483,081.00		
Totals for Debt Entered:		\$3,256,630.44		\$283,658.44	\$2,972,972.00		

General Fund (10)

Section 1: Tuition/Purchased Services as Reported within Expenditure Detail

	Amount
Tuition Reported in General Fund Expenditures 1000-560	5,139,599.37
Purchased Services in General Fund Expenditures 1000-594 and 1000-597	967.94
Section 1 Total	\$5,140,567.31

Section 2: Tuition Paid to Institution Types During Fiscal Year

	Tuition Paid For Nonspecial Education	Tuition Paid For Special Education	Total
1 1306 Institutions	8,824.80	904.31	9,729.11
2 Institutionalized Children's Programs		967.94	967.94
3 Juveniles Incarcerated in Adult Facilities			
4 Residential Treatment Facilities	12,256.50	537.39	12,793.89
5 Other Local Education Agencies	45,912.52	23,622.96	69,535.48
6 Brick and Mortar Charter Schools	519,102.17	389,795.19	908,897.36
7 Cyber Charter Schools	750,602.31	376,801.55	1,127,403.86
8 Career and Technology Centers	1,485,702.00	419,043.00	1,904,745.00
9 Approved Private Schools	48,719.43	34,932.56	83,651.99
10 PA Chartered Schools for the Deaf and Blind			
11 Private Residential Rehabilitative Institutions		86,723.04	86,723.04
12 Juvenile Detention Centers	26,840.89	8,990.71	35,831.60
13 Special Program Jointures			
14 Other Tuition Not Included Elsewhere In This Section	127,937.36	772,350.68	900,288.04
Section 2 Total	\$3,025,897.98	\$2,114,669.33	\$5,140,567.31

LEA : 111444602 Mifflin County SD

Printed 11/4/2020 1:14:04 PM

Food Service / Cafeteria Operations Fund (51)

3000 Operation of Non-Instructional Services

Total

100 Personnel Services – Salaries

100 Personnel Services – Salaries 895,590.46

Total Personnel Services – Salaries

\$895,590.46

200 Personnel Services – Employee Benefits

210 Group Insurance – Contracted Provider 270,375.15

220 Social Security Contributions 67,287.89

230 PSERS Retirement Contributions 52,192.43

250 Unemployment Compensation 1,791.43

260 Workers' Compensation 4,478.32

280 Other Post-Employment Benefits (OPEB) (14,770.30)

291 Other Retirement Plans 6,798.22

Total Personnel Services – Employee Benefits

\$388,153.14

300 Purchased Professional and Technical Services

329 Professional Educational Services – Other 689.74

Total Purchased Professional and Technical Services

\$689.74

400 Purchased Property Services

410 Cleaning Services 6,622.76

420 Utility Services 337.80

430 Repairs and Maintenance Services 19,288.34

460 Extermination Services 400.00

Total Purchased Property Services

\$26,648.90

500 Other Purchased Services

530 Communications 1,499.28

550 Printing and Binding 1,183.00

570 Food Service Management 82,500.00

580 Travel 1,456.56

Total Other Purchased Services

\$86,638.84

600 Supplies

610 General Supplies 45,128.19

630 Food 942,017.37

Total Supplies

\$987,145.56

800 Other Objects

890 Miscellaneous Expenditures 2,173.50

Total Other Objects

\$2,173.50

Total 3000 Operation of Non-Instructional Services

\$2,387,040.14

Food Service / Cafeteria Operations Fund (51)

	<u>Elementary</u>	<u>Secondary</u>	<u>Federal</u>	<u>Total</u>
3100 Food Services				
100 Personnel Services – Salaries				
100 Personnel Services – Salaries				895,590.46
Total Personnel Services – Salaries				
\$895,590.46				
200 Personnel Services – Employee Benefits				
210 Group Insurance – Contracted Provider				270,375.15
220 Social Security Contributions				67,287.89
230 PSERS Retirement Contributions				52,192.43
250 Unemployment Compensation				1,791.43
260 Workers' Compensation				4,478.32
280 Other Post-Employment Benefits (OPEB)				(14,770.30)
291 Other Retirement Plans				6,798.22
Total Personnel Services – Employee Benefits				
\$388,153.14				
300 Purchased Professional and Technical Services				
329 Professional Educational Services – Other				689.74
Total Purchased Professional and Technical Services				
\$689.74				
400 Purchased Property Services				
410 Cleaning Services				6,622.76
420 Utility Services				337.80
430 Repairs and Maintenance Services				19,288.34
460 Extermination Services				400.00
Total Purchased Property Services				
\$26,648.90				
500 Other Purchased Services				
530 Communications				1,499.28
550 Printing and Binding				1,183.00
570 Food Service Management				82,500.00
580 Travel				1,456.56
Total Other Purchased Services				
\$86,638.84				
600 Supplies				
610 General Supplies				45,128.19
630 Food				942,017.37
Total Supplies				
\$987,145.56				
800 Other Objects				
890 Miscellaneous Expenditures				2,173.50
Total Other Objects				
\$2,173.50				
Total 3100 Food Services				
\$2,387,040.14				

	<u>Food Service(51)</u>	<u>Child Care Operations(52)</u>	<u>Other Enterprise(58)</u>	<u>Internal Service(60)</u>	<u>Total</u>
3000 <u>Operation of Non-Instructional Services</u>					
3100 Food Services	2,387,040.14				2,387,040.14
Total Operation of Non-Instructional Services	\$2,387,040.14				\$2,387,040.14
TOTAL ACTUAL EXPENDITURES & OTHER FINANCING USES	\$2,387,040.14				\$2,387,040.14

LEA : 111444602 Mifflin County SD

Printed 11/4/2020 1:14:21 PM

Fund	School	School Number	Local Personnel	Local Nonpersonnel	State Personnel	State Nonpersonnel	Federal Personnel	Federal Nonpersonnel	Total	Explanation
10										
	East Derry El Sch	6261	1,144,840.00	249,485.00	1,599,692.00	306,153.00	466,223.00	10,918.00	3,777,311.00	
	Indian Valley El Sch	8182	1,460,016.00	352,256.00	1,798,495.00	424,293.00	651,058.00	32,224.00	4,718,342.00	
	Indian Valley Intrmd Sch	8183	847,310.00	227,160.00	986,486.00	275,139.00	52,038.00	3,019.00	2,391,152.00	
	Lewistown El Sch	7789	2,176,415.00	481,715.00	2,863,657.00	598,256.00	948,828.00	112,037.00	7,180,908.00	
	Lewistown Intrmd Sch	8184	2,375,980.00	450,227.00	2,761,830.00	529,419.00	142,743.00	9,689.00	6,269,888.00	
	Mifflin Co HS	8187	5,389,070.00	1,207,545.00	6,254,267.00	1,419,926.00	230,450.00	24,304.00	14,525,562.00	
	Mifflin Co JHS	8186	3,561,751.00	682,325.00	4,141,675.00	801,917.00	161,116.00	11,723.00	9,360,507.00	
	Mifflin Co MS	8185	3,468,159.00	737,999.00	4,034,134.00	864,100.00	191,082.00	27,581.00	9,323,055.00	
	Strodes Mills El Sch	3196	991,021.00	294,229.00	1,407,888.00	356,550.00	543,137.00	30,892.00	3,623,717.00	
Total			21,414,562.00	4,682,941.00	25,848,124.00	5,575,753.00	3,386,675.00	262,387.00	61,170,442.00	

	<u>Nonspecial Education</u>	<u>Special Education</u>
1000 Instruction		
1400 Other Instructional Programs - Elementary / Secondary	6,039.00	
Total Instruction	\$6,039.00	
TOTAL ACTUAL EXPENDITURES & OTHER FINANCING USES	\$6,039.00	

LEA : 111444602 Mifflin County SD

Printed 11/4/2020 1:14:49 PM

1000 Instruction

100 Personnel Services - Salaries

100 Personnel Services - Salaries 4,242.00

Total Personnel Services - Salaries \$4,242.00

200 Personnel Services - Employee Benefits

220 Social Security Contributions 313.00

230 PSERS Retirement Contributions 1,455.00

250 Unemployment Compensation 8.00

260 Workers' Compensation 21.00

Total Personnel Services - Employee Benefits \$1,797.00

Total 1000 Instruction \$6,039.00

LEA : 111444602 Mifflin County SD

Printed 11/4/2020 1:14:49 PM

1400 Other Instructional Programs - Elementary / Secondary	<u>Nonspecial Education</u>	<u>Special Education</u>
100 Personnel Services - Salaries		
100 Personnel Services - Salaries	4,242.00	
Total Personnel Services - Salaries	\$4,242.00	
200 Personnel Services - Employee Benefits		
220 Social Security Contributions	313.00	
230 PSERS Retirement Contributions	1,455.00	
250 Unemployment Compensation	8.00	
260 Workers' Compensation	21.00	
Total Personnel Services - Employee Benefits	\$1,797.00	
Total 1400 Other Instructional Programs - Elementary / Secondary	\$6,039.00	

LEA : 111444602 Mifflin County SD

Printed 11/4/2020 1:14:49 PM

1440 Alternative Regular Education Programs	<u>Nonspecial Education</u>	<u>Special Education</u>
100 Personnel Services - Salaries		
100 Personnel Services - Salaries	4,242.00	
Total Personnel Services - Salaries	\$4,242.00	
200 Personnel Services - Employee Benefits		
220 Social Security Contributions	313.00	
230 PSERS Retirement Contributions	1,455.00	
250 Unemployment Compensation	8.00	
260 Workers' Compensation	21.00	
Total Personnel Services - Employee Benefits	\$1,797.00	
Total 1440 Alternative Regular Education Programs	\$6,039.00	

LEA : 111444602 Mifflin County SD

Printed 11/4/2020 1:14:49 PM

1441 Adjudicated / Court-Placed Programs	<u>Nonspecial Education</u>	<u>Special Education</u>
100 Personnel Services - Salaries		
100 Personnel Services - Salaries	4,242.00	
Total Personnel Services - Salaries	\$4,242.00	
200 Personnel Services - Employee Benefits		
220 Social Security Contributions	313.00	
230 PSERS Retirement Contributions	1,455.00	
250 Unemployment Compensation	8.00	
260 Workers' Compensation	21.00	
Total Personnel Services - Employee Benefits	\$1,797.00	
Total 1441 Adjudicated / Court-Placed Programs	\$6,039.00	