

LEA Name : Mifflin County SD
Address : 201 Eighth St - Highland Park
Lewistown , PA 17044

County : Mifflin
AUN Number : 111444602
LEA Type : SD

Annual Financial Report
Accuracy Certification Statement

For Fiscal Year Ending

6/30/2019

Pennsylvania Department of Education

&

Office of Comptroller Operations

PDE-2056: Intermediate Unit

PDE-2057: School District, AVTS/CTC, Charter School,
and Special Program Jointure

CERTIFICATION: By signing this page I agree that the electronic data submitted is a complete and accurate statement of the financial operations and status of the local education agency for the fiscal year. It has been prepared in accordance with generally accepted accounting principles and established Commonwealth of PA reporting guidelines.

Chief School Administrator Signature

Date

Board Secretary Signature

Date

Melinda Kenepf

(717)248-0148

Ext :

Contact Person

Contact Person Telephone Number

mkk08@mcsdk12.org

Contact Person E-mail Address

Contact Person Fax Number

Audit Certification
Annual Financial Report:
For Fiscal Year Ending **6/30/2019**
(Pursuant to PA School Code Section 218(b))

LEA Name : Mifflin County SD
AUN Number : 111444602
County : Mifflin

Audit Certification Due: 12/31/2019

This certification is applicable to the Annual Financial Report data submitted through the Consolidated Financial Reporting System on: _____
Date

Auditing Firm:

CERTIFICATION: By signing this page I agree that the financial statements of the school have been properly audited as noted above pursuant to Article XXIV, and in the auditor's professional opinion, the Annual Financial Report (PDE-2057) submitted on the date referenced is materially consistent with the audited financial statements.

Chief School Administrator

Board Secretary

Signature Date

Signature Date

Melinda Kenep

Contact Person

mkk08@mcsdk12.org

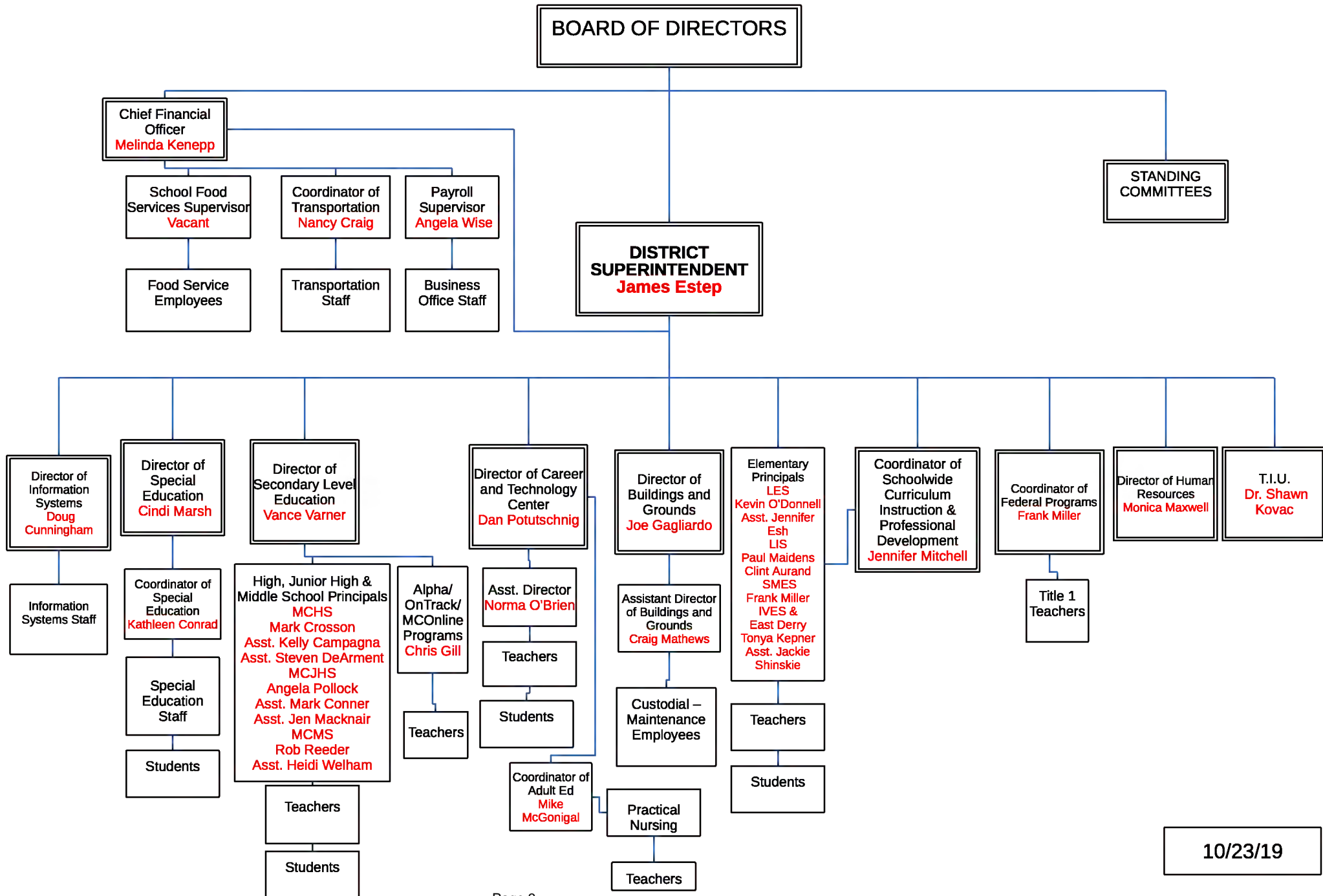
Contact Person E-mail Address

(717)248-0148 Ext :

Contact Person Telephone Number

Contact Person Fax Number

ADMINISTRATIVE ORGANIZATION MIFFLIN COUNTY SCHOOL DISTRICT



10/23/19

<u>Val Number</u>	<u>Description</u>	<u>Justification</u>
13020	REG: Interfund Trans-Out must equal REG Interfund Trans-In plus REP Interfund Trans In minus REP Interfund Trans-Out. (REG 5200 = REG 9300 + REP 9300 - REP 5200) Reference amts do not include any incoming transfers of the Fid. Funds. Include Fid. Fund incoming transfer info in the justification. Correct or enter a justification. Transfers Out (REG 5200): \$9,808,187.00 (REG 9300) + (REP 9300) - (REP 5200) : \$9,738,187.00	\$70,000 transferred to Student Activity Fund
41150	Expenditure Detail - There is an entry in function 5150- 990 object "Other". Please explain what constitutes "Other". Expenditure 5150-990, Fund 40: \$37,051.40	Amount is the net discount associated with series A 2019 bond issue
50160	SOIN: All Governmental Fund General Obligation Bonds must include an amount for Interest Paid during Fiscal Year. Correct data or enter a justification.	Current year bond issue and refinancing no interest due until 2019/20 school year
50430	SESS - 2160 Social Work Services: SESS Schedule amounts for Special Education vary from prior year by 40% or more. Correct the data or enter a justification. SESS Schedule 2160: \$11,293.11 Prior Year SESS Schedule 2160: \$0.00	District hired Social Worker as new position 2018/19

LEA : 111444602 Mifflin County SD

Printed 11/15/2019 11:21:55 AM

Amounts Expressed in Whole Dollars	<u>General Fund</u> <u>(10)</u>	<u>Public Purpose Trust</u> <u>(27)</u>	<u>Other Compt Approved</u> <u>(28)</u>	<u>Athletic / Activity</u> <u>(29)</u>	<u>Capital Reserve (690.</u> <u>1850)</u> <u>(31)</u>
Assets And Deferred Outflows Of Resources					
Assets					
0100 Cash and Cash Equivalents	13,393,595				
0110 Investments					
0120 Taxes Receivable	2,009,503				
0130 Due From Other Funds	88,240				
0141 Due From Other Governments	927,083				
0142 State Revenue Receivable	3,254,882				
0143 Federal Revenue Receivable	437,478				
0145 Other Intergovernmental Revenue Receivable					
0146 Due from Primary Government					
0147 Due from Component Unit					
0150 Other Receivables	1,411,369				
0170 Inventories					
0180 Prepaid Expenses (Expenditures)	7,610				
0190 Other Current Assets					
Total Assets	\$21,529,760				
0910 Deferred Outflows of Resources					
Total Assets And Deferred Outflows Of Resources	\$21,529,760				

LEA : 111444602 Mifflin County SD

Printed 11/15/2019 11:21:55 AM

Amounts Expressed in Whole Dollars		<u>Capital Reserve (1431)</u> <u>(32)</u>	<u>Other Capital Projects</u> <u>Fund</u> <u>(39)</u>	<u>Debt Service</u> <u>(40)</u>	<u>Permanent</u> <u>(90)</u>	<u>Total Governmental</u> <u>Funds</u>
Assets And Deferred Outflows Of Resources						
Assets						
0100	Cash and Cash Equivalents		12,998,533	5,153		26,397,281
0110	Investments					
0120	Taxes Receivable					2,009,503
0130	Due From Other Funds		1,200,000			1,288,240
0141	Due From Other Governments					927,083
0142	State Revenue Receivable					3,254,882
0143	Federal Revenue Receivable					437,478
0145	Other Intergovernmental Revenue Receivable					
0146	Due from Primary Government					
0147	Due from Component Unit					
0150	Other Receivables					1,411,369
0170	Inventories					
0180	Prepaid Expenses (Expenditures)					7,610
0190	Other Current Assets					
Total Assets			\$14,198,533	\$5,153		\$35,733,446
0910	Deferred Outflows of Resources					
Total Assets And Deferred Outflows Of Resources			\$14,198,533	\$5,153		\$35,733,446

LEA : 111444602 Mifflin County SD

Printed 11/15/2019 11:21:55 AM

Amounts Expressed in Whole Dollars	<u>General Fund</u> <u>(10)</u>	<u>Public Purpose Trust</u> <u>(27)</u>	<u>Other Compt Approved</u> <u>(28)</u>	<u>Athletic / Activity</u> <u>(29)</u>	<u>Capital Reserve (690.</u> <u>1850)</u> <u>(31)</u>
Liabilities And Deferred Inflows Of Resources And Fund Balances					
Liabilities					
0400 Due to Other Funds	1,200,000				
0411 Due to Other Governments					
0412 Due to Primary Government					
0413 Due to Component Unit					
0420 Accounts Payable	620,673				
0430 Contracts Payable					
0440 Current Portion of Long-Term Debt					
0450 Short-Term Payables					
0461 Accrued Salaries and Benefits	7,240,415				
0462 Payroll Deductions and Withholding	381,899				
0480 Unearned Revenues	1,992,262				
0490 Other Current Liabilities	43,096				
Total Liabilities	\$11,478,345				
0950 Deferred Inflows of Resources					
Fund Balances					
0810 Nonspendable Fund Balance	7,610				
0820 Restricted Fund Balance					
0830 Committed Fund Balance	20,272				
0840 Assigned Fund Balance	3,461,558				
0850 Unassigned Fund Balance	6,561,975				
Total Fund Balances	\$10,051,415				
Total Liabilities, Deferred Inflows Of Resources And Fund Balances	\$21,529,760				

LEA : 111444602 Mifflin County SD

Printed 11/15/2019 11:21:55 AM

Amounts Expressed in Whole Dollars	<u>Capital Reserve (1431)</u> <u>(32)</u>	<u>Other Capital Projects</u> <u>Fund</u> <u>(39)</u>	<u>Debt Service</u> <u>(40)</u>	<u>Permanent</u> <u>(90)</u>	<u>Total Governmental</u> <u>Funds</u>
Liabilities And Deferred Inflows Of Resources And Fund Balances					
Liabilities					
0400 Due to Other Funds					1,200,000
0411 Due to Other Governments					
0412 Due to Primary Government					
0413 Due to Component Unit					
0420 Accounts Payable		6,444			627,117
0430 Contracts Payable					
0440 Current Portion of Long-Term Debt					
0450 Short-Term Payables					
0461 Accrued Salaries and Benefits					7,240,415
0462 Payroll Deductions and Withholding					381,899
0480 Unearned Revenues					1,992,262
0490 Other Current Liabilities					43,096
Total Liabilities		\$6,444			\$11,484,789
0950 Deferred Inflows of Resources					
Fund Balances					
0810 Nonspendable Fund Balance					7,610
0820 Restricted Fund Balance					
0830 Committed Fund Balance					20,272
0840 Assigned Fund Balance		14,192,089	5,153		17,658,800
0850 Unassigned Fund Balance					6,561,975
Total Fund Balances		\$14,192,089	\$5,153		\$24,248,657
Total Liabilities, Deferred Inflows Of Resources And Fund Balances		\$14,198,533	\$5,153		\$35,733,446

LEA : 111444602 Mifflin County SD

Printed 11/15/2019 11:22:03 AM

Amounts Expressed in Whole Dollars	<u>General Fund</u> <u>(10)</u>	<u>Public Purpose Trust</u> <u>(27)</u>	<u>Other Compt Approved</u> <u>(28)</u>	<u>Athletic / Activity</u> <u>(29)</u>	<u>Capital Reserve (690.</u> <u>1850)</u> <u>(31)</u>
Revenues					
6000 Revenue from Local Sources	34,497,353				
7000 Revenue from State Sources	39,776,358				
8000 Revenue from Federal Sources	3,043,502				
Total Revenues	\$77,317,213				
Expenditures					
1000 Instruction	44,487,920				
2000 Support Services	21,247,611				
3000 Operation of Non-Instructional Services	1,127,988				
4000 Facilities Acquisition, Construction and Improvement Services					
5110 Debt Service	7,735,522				
5130 Refund of Prior Year Revenues / Receipts	1,890				
Total Expenditures	\$74,600,931				
Excess (Deficiency) Of Revenues Over Expenditures	\$2,716,282				
Other Financing Sources (Uses)					
9110 Face Value of Bonds Issued					
9120 Proceeds from Refunding of Bonds					
9130 Bond Premiums					
9200 Proceeds from Extended-Term Financing					
9300 Interfund Transfers - IN					
9400 Sale of or Compensation for Loss of Fixed Assets					
9710 Transfers from Component Units					
9720 Transfers from Primary Governments					
9910 Other Financing Sources Not Listed in the 9000 Series					
9990 Insurance Recoveries					
5120 Debt Service – Refunded Bonds					
5150 Bond Discounts					
5200 Interfund Transfers – Out	1,270,000				
5300 Transfers Out to Component Units/Primary Governments					
Total Other Financing Sources (Uses)	(\$1,270,000)				

LEA : 111444602 Mifflin County SD

Printed 11/15/2019 11:22:03 AM

Amounts Expressed in Whole Dollars	<u>Capital Reserve (1431)</u> <u>(32)</u>	<u>Other Capital Projects</u> <u>Fund</u> <u>(39)</u>	<u>Debt Service</u> <u>(40)</u>	<u>Permanent</u> <u>(90)</u>	<u>Total Governmental</u> <u>Funds</u>
Revenues					
6000 Revenue from Local Sources		200,518			34,697,871
7000 Revenue from State Sources					39,776,358
8000 Revenue from Federal Sources					3,043,502
Total Revenues		\$200,518			\$77,517,731
Expenditures					
1000 Instruction		10,405			44,498,325
2000 Support Services		1,517,898	225,244		22,990,753
3000 Operation of Non-Instructional Services					1,127,988
4000 Facilities Acquisition, Construction and Improvement Services		10,431,508			10,431,508
5110 Debt Service					7,735,522
5130 Refund of Prior Year Revenues / Receipts					1,890
Total Expenditures		\$11,959,811	\$225,244		\$86,785,986
Excess (Deficiency) Of Revenues Over Expenditures		(\$11,759,293)	(\$225,244)		(\$9,268,255)
Other Financing Sources (Uses)					
9110 Face Value of Bonds Issued			8,200,000		8,200,000
9120 Proceeds from Refunding of Bonds			8,270,000		8,270,000
9130 Bond Premiums			463,602		463,602
9200 Proceeds from Extended-Term Financing					
9300 Interfund Transfers - IN		9,738,187			9,738,187
9400 Sale of or Compensation for Loss of Fixed Assets					
9710 Transfers from Component Units					
9720 Transfers from Primary Governments					
9910 Other Financing Sources Not Listed in the 9000 Series					
9990 Insurance Recoveries					
5120 Debt Service – Refunded Bonds			8,127,966		8,127,966
5150 Bond Discounts			37,051		37,051
5200 Interfund Transfers – Out			8,538,187		9,808,187
5300 Transfers Out to Component Units/Primary Governments					
Total Other Financing Sources (Uses)		\$9,738,187	\$230,398		\$8,698,585

Amounts Expressed in Whole Dollars	<u>General Fund</u> <u>(10)</u>	<u>Public Purpose Trust</u> <u>(27)</u>	<u>Other Compt Approved</u> <u>(28)</u>	<u>Athletic / Activity</u> <u>(29)</u>	<u>Capital Reserve</u> <u>(690.</u> <u>1850)</u> <u>(31)</u>
Special And Extraordinary Items					
9920 Special Items – Gains					
9930 Extraordinary Items – Gains					
5520 Special Items – Losses					
5530 Extraordinary Items – Losses					
Net Change In Fund Balances	\$1,446,282				
Fund Balance					
0001 Fund Balance - Beginning of Fiscal Year	8,605,134				
Fund Balance - End Of Year	\$10,051,416				

Amounts Expressed in Whole Dollars	<u>Capital Reserve (1431)</u> <u>(32)</u>	<u>Other Capital Projects</u> <u>Fund</u> <u>(39)</u>	<u>Debt Service</u> <u>(40)</u>	<u>Permanent</u> <u>(90)</u>	<u>Total Governmental</u> <u>Funds</u>
Special And Extraordinary Items					
9920 Special Items – Gains					
9930 Extraordinary Items – Gains					
5520 Special Items – Losses					
5530 Extraordinary Items – Losses					
Net Change In Fund Balances		(\$2,021,106)	\$5,154		(\$569,670)
Fund Balance					
0001 Fund Balance - Beginning of Fiscal Year		16,213,194			24,818,328
Fund Balance - End Of Year		\$14,192,088	\$5,154		\$24,248,658

LEA : 111444602 Mifflin County SD

Printed 11/15/2019 11:22:05 AM

Amounts Expressed in Whole Dollars	<u>Food Service</u> (51)	<u>Child Care</u> <u>Operations</u> (52)	<u>Other Enterprise</u> (58)	<u>TOTAL</u>	<u>Internal Service</u> (60)
Assets And Deferred Outflows Of Resources					
Current Assets					
0100 Cash and Cash Equivalents	482,025			482,025	
0110 Investments					
0130 Due From Other Funds					
0141 Due From Other Governments					
0142 State Revenue Receivable					
0143 Federal Revenue Receivable					
0146 Due from Primary Government					
0147 Due from Component Unit					
0150 Other Receivables					
0170 Inventories	15,228			15,228	
0180 Prepaid Expenses (Expenditures)	138			138	
0190 Other Current Assets					
Total Current Assets	\$497,391			\$497,391	
Noncurrent Assets					
0211 Land					
0212 Site Improvements (Net)					
0220 Buildings and Building Improvements (Net)					
0230 Machinery, Equipment and Furniture (Net)					
0250 Construction in Progress					
0260 Long Term Prepayments					
0290 Other Noncurrent Assets					
Total Noncurrent Assets					
0910 Deferred Outflows of Resources	156,775			156,775	
Total Assets And Deferred Outflows Of Resources	\$654,166			\$654,166	

LEA : 111444602 Mifflin County SD

Printed 11/15/2019 11:22:05 AM

Amounts Expressed in Whole Dollars	<u>Food Service</u> <u>(51)</u>	<u>Child Care</u> <u>Operations</u> <u>(52)</u>	<u>Other Enterprise</u> <u>(58)</u>	<u>TOTAL</u>	<u>Internal Service</u> <u>(60)</u>
Liabilities And Deferred Inflows Of Resources And Net Position					
Current Liabilities					
0400 Due to Other Funds	78,105			78,105	
0411 Due to Other Governments					
0413 Due to Component Unit					
0420 Accounts Payable					
0430 Contracts Payable					
0440 Current Portion of Long-Term Debt					
0450 Short-Term Payables					
0461 Accrued Salaries and Benefits	2,859			2,859	
0462 Payroll Deductions and Withholding					
0480 Unearned Revenues	31,832			31,832	
0490 Other Current Liabilities					
Total Current Liabilities	\$112,796			\$112,796	
Noncurrent Liabilities					
0510 Bonds Payable					
0520 Extended-Term Financing Agreements Payable					
0530 Lease-Purchase Obligations					
0540 Accumulated Compensated Absences	77,278			77,278	
0550 Authority Lease Obligations					
0560 Other Post-Employment Benefits (OPEB)	440,360			440,360	
0570 Net Pension Liability	2,738,992			2,738,992	
0599 Other Noncurrent Liabilities					
Total Noncurrent Liabilities	\$3,256,630			\$3,256,630	
Total Liabilities	\$3,369,426			\$3,369,426	
0950 Deferred Inflows of Resources	77,800			77,800	
Net Position					
0791 Net Investment in Capital Assets					
0008 Restricted Net Position (0792 – 0798)					
0799 Unrestricted Net Position	(2,793,060)			(2,793,060)	
Total Net Position	(\$2,793,060)			(\$2,793,060)	
Total Liabilities And Deferred Inflows Of Resources And Net Position	\$654,166			\$654,166	

Amounts Expressed in Whole Dollars	<u>Food Service</u> <u>(51)</u>	<u>Child Care Operations</u> <u>(52)</u>	<u>Other Enterprise</u> <u>(58)</u>	<u>TOTAL</u>	<u>Internal Service</u> <u>(60)</u>
Operating Revenues					
6600 Food Service Revenue	747,298			747,298	
0071 Charges for Services					
0072 Other Operating Revenue	11,369			11,369	
Total Operating Revenues	\$758,667			\$758,667	
Operating Expenses					
100 Personnel Services – Salaries	898,103			898,103	
200 Personnel Services – Employee Benefits	816,142			816,142	
300 Purchased Professional and Technical Services					
400 Purchased Property Services	21,963			21,963	
500 Other Purchased Services	5,691			5,691	
600 Supplies	1,225,916			1,225,916	
740 Depreciation					
810 Dues and Fees					
890 Miscellaneous Expenditures	2,798			2,798	
Total Operating Expenses	\$2,970,613			\$2,970,613	
Operating Income (Loss)	(\$2,211,946)			(\$2,211,946)	
Non Operating Revenues (Expenses)					
6500 Earnings on Investments	6,784			6,784	
6920 Contributions and Donations from Private Sources					
6930 Gains or Losses on Sale of Fixed Assets					
6991 Refunds of a Prior Year Expenditure					
7000 Revenue from State Sources	259,382			259,382	
8000 Revenue from Federal Sources	1,748,271			1,748,271	
9990 Insurance Recoveries					
820 Claims and Judgments Against the LEA					
830 Interest					
TOTAL Non Operating Revenues (Expenses)	\$2,014,437			\$2,014,437	
Income (Loss) Before Contributions And Transfers	(\$197,509)			(\$197,509)	

Amounts Expressed in Whole Dollars	<u>Food Service</u> <u>(51)</u>	<u>Child Care Operations</u> <u>(52)</u>	<u>Other Enterprise</u> <u>(58)</u>	<u>TOTAL</u>	<u>Internal Service</u> <u>(60)</u>
Contributions, Transfers, and Special and Extraordinary Items					
5200 Interfund Transfers – Out					
5300 Transfers Out to Component Units/Primary Governments					
5520 Special Items – Losses					
5530 Extraordinary Items – Losses					
9300 Interfund Transfers - IN					
9500 Capital Contributions					
9700 Transfers IN From Component Units/Primary Governments					
9920 Special Items – Gains					
9930 Extraordinary Items – Gains					
Change In Net Position	(\$197,509)			(\$197,509)	
0002 Net Position - Beginning of Fiscal Year	(2,595,551)			(2,595,551)	
0003 Accounting Changes / Residual Equity Transfers					
Net Position - End Of Year	(\$2,793,060)			(\$2,793,060)	

LEA : 111444602 Mifflin County SD

Printed 11/15/2019 11:22:16 AM

Amounts Expressed in Whole Dollars	<u>Food Service</u> <u>(51)</u>	<u>Child Care Operations</u> <u>(52)</u>	<u>Other Enterprise</u> <u>(58)</u>	<u>TOTAL</u>	<u>Internal Service(60)</u>
Cash Flows From Operating Activities					
0011 Cash Receipts From Users	753,553			753,553	
0012 Cash Receipts From Assessments Made to Other Funds					
0013 Cash Receipts From Earnings on Investments					
0014 Cash Receipts From Other Operating Revenue					
0015 Cash Payments To Employees For Services	1,517,732			1,517,732	
0016 Cash Payments For Insurance Claims					
0017 Cash Payments To Suppliers For Goods and Services	1,231,596			1,231,596	
0018 Cash Payments For Other Operating Expenses					
Net Cash Provided By (Used For) Operating Activities	(\$1,995,775)			(\$1,995,775)	
Cash Flows From Non-Capital Financing Activities					
0021 Receipts From Local Sources - 6000					
0022 Receipts From State Sources - 7000	259,382			259,382	
0023 Receipts From Federal Sources -8000	1,748,271			1,748,271	
0024 Notes and Loans Received (Repaid)					
0025 Interest Paid on Notes/Loans - 5100-830					
0026 Operating Transfers In (Out)/Residual Equity Trans					
0027 Operating Transfers In (Out) Primary Government / Comp Unit					
0028 Receipts From Refund of Prior Year Expenditures - 6991					
0029 Special and Extraordinary Gains (losses)					
0030 Receipts from Insurance Recoveries -9990					
Net Cash Prov By (Used for) Non-Capital Financing Activities	\$2,007,653			\$2,007,653	
Cash Flows From Capital and Related Financing Activities					
0031 Payments For Fac Acq, Const, and Imp - 4000					
0032 Gain / (Loss) on Sale of Fixed Assets - 6930					
0033 Proceeds From Extended Term Financing - 9200					
0034 Principal Paid on Financing Agreements					
0035 Interest Paid on Financing Agreements - 5100-830					
0036 (Inc) Dec in Contributed Capital					
Net Cash Prov By (Used for) Capital and Related Financing Activities					
Cash Flows From Investing Activities					
0041 Earnings on Investments - 6500	6,784			6,784	
0042 Purchase of Inv Securities / Deposits to Inv Pools					
0043 Receipts From Investment Pool Withdrawals					
0044 Proceeds from Sale and Maturity of Inv Securities					

LEA : 111444602 Mifflin County SD

Printed 11/15/2019 11:22:16 AM

0045 Loans Received (Paid)

Net Cash Prov By (Used for) Investing Activities	\$6,784	\$6,784
--	---------	---------

LEA : 111444602 Mifflin County SD

Printed 11/15/2019 11:22:16 AM

	<u>Food Service</u> <u>(51)</u>	<u>Child Care Operations</u> <u>(52)</u>	<u>Other Enterprise</u> <u>(58)</u>	<u>TOTAL</u>	<u>Internal Service</u> <u>(60)</u>
Net Increase (Decrease) in Cash Flows	18,662			18,662	
0004 Cash and Cash Equivalents Beginning of Year	463,363			463,363	
Cash and Cash Equivalents at Year End	\$482,025			\$482,025	
<hr/>					
Reconciliation of Operating Income (Loss) To Net Cash Provided by (Used For) Operating Activities					
0005 Operating Income (Loss) per REP	(2,211,946)			(2,211,946)	
Adjustments					
0051 Depreciation and Net Amortization					
0052 Provision for Uncollectible Accounts					
0053 Other Adjustments					
Effect of Changes in Assets, Liabilities, Deferred Outflows and Deferred Inflows					
0054 (Inc) Dec In Accounts Receivable (0120-0150)	978			978	
0055 Advances to Other Funds (0160)	38,773			38,773	
0056 (Inc) Dec in Inventories (0170)	1,360			1,360	
0057 (Inc) Dec in Prepaid Expenses (0180)	(138)			(138)	
0058 (Inc) Dec in Other Current or Noncurrent Assets					
0064 Deferred Outflows (0910)	19,688			19,688	
0059 Inc (Dec) in Accounts Payable (0400-0450)					
0060 Inc (Dec) in Accrued Salaries/Benefits (0461)	62			62	
0065 Inc (Dec) in Net Pension Liabilities (0570)	682			682	
0066 Inc (Dec) in Other Postemp Benefit Oblig (0560)	132,178			132,178	
0061 Inc (Dec) in Payroll Deductions/Withholding (0462)					
0062 Inc (Dec) in Unearned Revenue (0480)	1,010			1,010	
0063 Inc (Dec) in Other Current or Noncurrent Liabilities	(128)			(128)	
0067 Deferred Inflows (0950)	21,706			21,706	
Total Adjustments	\$216,171			\$216,171	
Cash Provided By (Used for) Total	(\$1,995,775)			(\$1,995,775)	

COMBINED STATEMENT OF CASH FLOWS
SCHEDULE OF NONCASH INVESTING, CAPITAL, AND FINANCING ACTIVITIES

Explanation of Transaction and Balance Sheet Effect	Amount
Total	

LEA : 111444602 Mifflin County SD

Printed 11/15/2019 11:22:18 AM

Amounts Expressed in Whole Dollars	<u>Private Purpose Trust</u> <u>(71)</u>	<u>Investment Trust</u> <u>(72)</u>	<u>Pension Trust</u> <u>(73)</u>	<u>Activity</u> <u>(81)</u>
Assets And Deferred Outflows Of Resources				
Assets				
0100 Cash and Cash Equivalents				222,676
0110 Investments				
0130 Due From Other Funds				
0147 Due from Component Unit				
0150 Other Receivables				
0170 Inventories				
0180 Prepaid Expenses (Expenditures)				2,035
0190 Other Current Assets				
0220 Buildings and Building Improvements (Net)				
0230 Machinery, Equipment and Furniture (Net)				
Total Assets				\$224,711
0910 Deferred Outflows of Resources				
Total Assets And Deferred Outflows Of Resources				\$224,711

LEA : 111444602 Mifflin County SD

Printed 11/15/2019 11:22:18 AM

Amounts Expressed in Whole Dollars		<u>Other Agency</u> <u>(89)</u>	<u>Discrete Component Units</u> <u>(98)</u>	<u>Discrete Component Units</u> <u>(99)</u>	<u>Total Fiduciary Funds</u>
Assets And Deferred Outflows Of Resources					
Assets					
0100	Cash and Cash Equivalents				222,676
0110	Investments				
0130	Due From Other Funds				
0147	Due from Component Unit				
0150	Other Receivables				
0170	Inventories				
0180	Prepaid Expenses (Expenditures)				2,035
0190	Other Current Assets				
0220	Buildings and Building Improvements (Net)				
0230	Machinery, Equipment and Furniture (Net)				
Total Assets					\$224,711
0910	Deferred Outflows of Resources				
Total Assets And Deferred Outflows Of Resources					\$224,711

LEA : 111444602 Mifflin County SD

Printed 11/15/2019 11:22:18 AM

Amounts Expressed in Whole Dollars	<u>Private Purpose Trust</u> <u>(71)</u>	<u>Investment Trust</u> <u>(72)</u>	<u>Pension Trust</u> <u>(73)</u>	<u>Activity</u> <u>(81)</u>
Liabilities, Deferred Inflows Of Resources And Net Position				
Liabilities				
0400 Due to Other Funds				4,677
0411 Due to Other Governments				
0412 Due to Primary Government				
0413 Due to Component Unit				
0420 Accounts Payable				
0430 Contracts Payable				
0450 Short-Term Payables				
0461 Accrued Salaries and Benefits				
0462 Payroll Deductions and Withholding				
0480 Unearned Revenues				
0490 Other Current Liabilities				220,034
Total Liabilities				\$224,711
0950 Deferred Inflows of Resources				
Net Position				
0791 Net Investment in Capital Assets				
0009 Restricted Net Position (0792 – 0798)				
0799 Unrestricted Net Position				
Total Net Position				
Total Liabilities, Deferred Inflows Of Resources And Net Position				\$224,711

LEA : 111444602 Mifflin County SD

Printed 11/15/2019 11:22:18 AM

Amounts Expressed in Whole Dollars	<u>Other Agency</u> <u>(89)</u>	<u>Discrete Component Units</u> <u>(98)</u>	<u>Discrete Component Units</u> <u>(99)</u>	<u>Total Fiduciary Funds</u>
Liabilities, Deferred Inflows Of Resources And Net Position				
Liabilities				
0400 Due to Other Funds				4,677
0411 Due to Other Governments				
0412 Due to Primary Government				
0413 Due to Component Unit				
0420 Accounts Payable				
0430 Contracts Payable				
0450 Short-Term Payables				
0461 Accrued Salaries and Benefits				
0462 Payroll Deductions and Withholding				
0480 Unearned Revenues				
0490 Other Current Liabilities				220,034
Total Liabilities				\$224,711
0950 Deferred Inflows of Resources				
Net Position				
0791 Net Investment in Capital Assets				
0009 Restricted Net Position (0792 – 0798)				
0799 Unrestricted Net Position				
Total Net Position				
Total Liabilities, Deferred Inflows Of Resources And Net Position				\$224,711

LEA : 111444602 Mifflin County SD

General Fund (10)

Printed 11/15/2019 11:22:20 AM

Page - 1 of 3

	Revenue Reported In Current Year	Current Year Tax Accrual	Prior Year Tax Accrual	Taxes Collected In Current Year
Revenue from Local Sources				
6111 Current Real Estate Taxes	23,412,141.57			23,412,141.57
6112 Interim Real Estate Taxes	209,006.63			209,006.63
6113 Public Utility Realty Taxes	32,818.85			32,818.85
6114 Payments in Lieu of Current Taxes - State / Local	316,855.14			316,855.14
6120 Current Per Capita Taxes, Section 679	105,593.70			105,593.70
6141 Current Act 511 Per Capita Taxes	105,593.70			105,593.70
6143 Current Act 511 Local Services Taxes	74,305.29			74,305.29
6151 Current Act 511 Earned Income Taxes	6,429,914.64			6,429,914.64
6153 Current Act 511 Real Estate Transfer Taxes	505,971.27			505,971.27
6411 Delinquent Real Estate Taxes	1,990,283.14			1,990,283.14
6420 Delinquent Per Capita Taxes, Section 679	11,084.08			11,084.08
6440 Delinquent Local Enabling Taxes - Flat Rate Assessments	11,117.18			11,117.18
6500 Earnings on Investments	318,837.67			
6700 Revenues from LEA Activities	79,080.88			
6832 Federal IDEA Revenue Received as Pass Through	751,697.16			
6839 Federal Revenue Received from Other Sources	346.03			
6910 Rentals	11,918.00			
6920 Contributions and Donations from Private Sources	11,175.45			
6944 Receipts from Other LEAs in Pennsylvania - Education	30,524.67			
6969 All Other Services Provided Other Governments	39,081.00			
6999 Other Revenues Not Specified Above	50,007.37			
TOTAL Revenue from Local Sources	\$34,497,353.42			\$33,204,685.19

	Revenue Reported In Current Year
<u>Revenue from State Sources</u>	
7110 Basic Education Funding	21,468,417.57
7160 Tuition for Orphans Subsidy	207,991.80
7250 Migratory Children	80.00
7271 Special Education funds for School-Aged Pupils	3,441,983.42
7299 Program Revenues Not Listed Previously in the 7200 Series	1,900.12
7311 Pupil Transportation Subsidy	3,224,100.15
7312 Nonpublic and Charter School Pupil Transportation Subsidy	153,230.00
7320 Rental and Sinking Fund Payments / Building Reimbursement Subsidy	1,092,330.55
7330 Health Services (Medical, Dental, Nurse, Act 25)	90,414.08
7340 State Property Tax Reduction Allocation	1,920,671.17
7361 School Safety and Security Grants	25,000.00
7505 Ready to Learn Block Grant	968,914.00
7810 State Share of Social Security and Medicare Taxes	1,084,508.60
7820 State Share of Retirement Contributions	6,096,816.57
TOTAL Revenue from State Sources	\$39,776,358.03

	Revenue Reported In Current Year	
<u>Revenue from Federal Sources</u>		
8514 NCLB, Title I - Improving the Academic Achievement of the Disadvantaged	2,297,821.23	
8515 NCLB, Title II - Preparing, Training and Recruiting High Quality Teachers and Principals	310,835.93	
8516 NCLB, Title III - Language Instruction for Limited English Proficient and Immigrant Students	11,876.84	
8517 NCLB, Title IV - 21St Century Schools	152,849.93	
8519 NCLB, Title VI - Flexibility and Accountability	132,124.05	
8810 School-Based Access Medicaid Reimbursement Program (SBAP) Reimbursements (Access)	118,824.21	
8820 Medical Assistance Reimbursement for Administrative Claiming (Quarterly) Program	19,170.24	
TOTAL Revenue from Federal Sources	\$3,043,502.43	
TOTAL FROM ALL SOURCES	\$77,317,213.88	\$33,204,685.19

Revenue from Local Sources	34,497,353.42
Revenue from State Sources	39,776,358.03
Revenue from Federal Sources	3,043,502.43
Other Financing Sources	
TOTAL FROM ALL SOURCES	\$77,317,213.88

LEA : 111444602 Mifflin County SD

Printed 11/15/2019 11:22:27 AM

General Fund (10)	
1000 Instruction	<u>Total</u>
100 <u>Personnel Services – Salaries</u>	
100 Personnel Services – Salaries	21,105,062.14
Total Personnel Services – Salaries	\$21,105,062.14
200 <u>Personnel Services – Employee Benefits</u>	
210 Group Insurance – Contracted Provider	6,451,803.17
220 Social Security Contributions	1,576,143.00
230 PSERS Retirement Contributions	7,007,241.31
250 Unemployment Compensation	27,739.51
260 Workers' Compensation	107,520.70
291 Other Retirement Plans	96,260.00
Total Personnel Services – Employee Benefits	\$15,266,707.69
300 <u>Purchased Professional and Technical Services</u>	
322 Professional Educational Services – Ius	84,166.10
323 Professional Educational Services – Other Educational Agencies	25,100.00
329 Professional Educational Services – Other	902,537.13
330 Other Professional Services	1,120.00
Total Purchased Professional and Technical Services	\$1,012,923.23
400 <u>Purchased Property Services</u>	
430 Repairs and Maintenance Services	150,874.84
440 Rentals	181,216.83
Total Purchased Property Services	\$332,091.67
500 <u>Other Purchased Services</u>	
510 Student Transportation Services	76,070.77
530 Communications	105,738.26
550 Printing and Binding	9,367.26
561 Tuition To Other School Districts Within the State	1,005,984.03
562 Tuition To Pennsylvania Charter Schools	2,230,951.68
564 Tuition To Career and Technology Centers	1,828,508.00
568 Tuition To Private Residential Rehabilitative Institutions (PRRI) [In-State] and Detention Centers	95,123.91
580 Travel	16,967.25
594 IU Payment By Withholding for Institutionalized Children's Programs – Special Classes	770.81
Total Other Purchased Services	\$5,369,481.97
600 <u>Supplies</u>	
610 General Supplies	760,311.93
640 Books and Periodicals	640,265.85
Total Supplies	\$1,400,577.78
800 <u>Other Objects</u>	
810 Dues and Fees	1,076.00
Total Other Objects	\$1,076.00
Total 1000 Instruction	\$44,487,920.48

LEA : 111444602 Mifflin County SD

Printed 11/15/2019 11:22:27 AM

General Fund (10)				
1100 Regular Programs – Elementary / Secondary	<u>Elementary</u>	<u>Secondary</u>	<u>Federal</u>	<u>Total</u>
100 <u>Personnel Services – Salaries</u>				
100 Personnel Services – Salaries	7,098,780.43	6,011,085.89	1,378,550.94	14,488,417.26
Total Personnel Services – Salaries	\$7,098,780.43	\$6,011,085.89	\$1,378,550.94	\$14,488,417.26
200 <u>Personnel Services – Employee Benefits</u>				
210 Group Insurance – Contracted Provider	2,059,813.67	1,741,773.56	438,136.35	4,239,723.58
220 Social Security Contributions	508,308.76	471,554.44	102,651.04	1,082,514.24
230 PSERS Retirement Contributions	2,262,468.81	2,363,151.78	236,294.79	4,861,915.38
250 Unemployment Compensation	9,166.62	7,362.74	2,722.92	19,252.28
260 Workers' Compensation	36,414.36	31,811.15	4,687.31	72,912.82
291 Other Retirement Plans	18,084.98	78,175.02		96,260.00
Total Personnel Services – Employee Benefits	\$4,894,257.20	\$4,693,828.69	\$784,492.41	\$10,372,578.30
300 <u>Purchased Professional and Technical Services</u>				
323 Professional Educational Services – Other Educational Agencies		25,100.00		25,100.00
329 Professional Educational Services – Other	282,482.94	223,494.95	81,840.98	587,818.87
Total Purchased Professional and Technical Services	\$282,482.94	\$248,594.95	\$81,840.98	\$612,918.87
400 <u>Purchased Property Services</u>				
430 Repairs and Maintenance Services	52,046.64	95,453.49		147,500.13
440 Rentals	108,399.68	72,817.15		181,216.83
Total Purchased Property Services	\$160,446.32	\$168,270.64		\$328,716.96
500 <u>Other Purchased Services</u>				
510 Student Transportation Services	74,395.21	1,422.56		75,817.77
530 Communications	52,826.21	51,223.79		104,050.00
550 Printing and Binding	1,565.46	7,801.80		9,367.26
561 Tuition To Other School Districts Within the State		253,767.87		253,767.87
562 Tuition To Pennsylvania Charter Schools		1,393,104.38		1,393,104.38
580 Travel	4,110.17	1,079.31		5,189.48
Total Other Purchased Services	\$132,897.05	\$1,708,399.71		\$1,841,296.76
600 <u>Supplies</u>				
610 General Supplies	256,176.19	210,193.56	153,562.69	619,932.44
640 Books and Periodicals	209,466.20	206,306.46		415,772.66
Total Supplies	\$465,642.39	\$416,500.02	\$153,562.69	\$1,035,705.10
Total 1100 Regular Programs – Elementary / Secondary	\$13,034,506.33	\$13,246,679.90	\$2,398,447.02	\$28,679,633.25

LEA : 111444602 Mifflin County SD

Printed 11/15/2019 11:22:27 AM

General Fund (10)

1110 Regular Programs	Elementary	Secondary	Federal	Total
100 Personnel Services – Salaries				
100 Personnel Services – Salaries	7,098,780.43	6,011,085.89		13,109,866.32
Total Personnel Services – Salaries	\$7,098,780.43	\$6,011,085.89		\$13,109,866.32
200 Personnel Services – Employee Benefits				
210 Group Insurance – Contracted Provider	2,059,813.67	1,741,773.56		3,801,587.23
220 Social Security Contributions	508,308.76	471,554.44		979,863.20
230 PSERS Retirement Contributions	2,262,468.81	2,363,151.78		4,625,620.59
250 Unemployment Compensation	9,166.62	7,362.74		16,529.36
260 Workers' Compensation	36,414.36	31,811.15		68,225.51
291 Other Retirement Plans	18,084.98	78,175.02		96,260.00
Total Personnel Services – Employee Benefits	\$4,894,257.20	\$4,693,828.69		\$9,588,085.89
300 Purchased Professional and Technical Services				
323 Professional Educational Services – Other Educational Agencies		25,100.00		25,100.00
329 Professional Educational Services – Other	282,482.94	223,494.95		505,977.89
Total Purchased Professional and Technical Services	\$282,482.94	\$248,594.95		\$531,077.89
400 Purchased Property Services				
430 Repairs and Maintenance Services	52,046.64	95,453.49		147,500.13
440 Rentals	108,399.68	72,817.15		181,216.83
Total Purchased Property Services	\$160,446.32	\$168,270.64		\$328,716.96
500 Other Purchased Services				
510 Student Transportation Services	74,395.21	1,422.56		75,817.77
530 Communications	52,826.21	51,223.79		104,050.00
550 Printing and Binding	1,565.46	7,801.80		9,367.26
561 Tuition To Other School Districts Within the State		253,767.87		253,767.87
562 Tuition To Pennsylvania Charter Schools		1,393,104.38		1,393,104.38
580 Travel	4,110.17	1,079.31		5,189.48
Total Other Purchased Services	\$132,897.05	\$1,708,399.71		\$1,841,296.76
600 Supplies				
610 General Supplies	256,176.19	210,193.56	166.34	466,536.09
640 Books and Periodicals	209,466.20	206,306.46		415,772.66
Total Supplies	\$465,642.39	\$416,500.02	\$166.34	\$882,308.75
Total 1110 Regular Programs	\$13,034,506.33	\$13,246,679.90	\$166.34	\$26,281,352.57

LEA : 111444602 Mifflin County SD

Printed 11/15/2019 11:22:27 AM

General Fund (10)

1190 Federally-Funded Regular Programs

	<u>Elementary</u>	<u>Secondary</u>	<u>Federal</u>	<u>Total</u>
100 <u>Personnel Services – Salaries</u>				
100 Personnel Services – Salaries			1,378,550.94	1,378,550.94
Total Personnel Services – Salaries			\$1,378,550.94	\$1,378,550.94
200 <u>Personnel Services – Employee Benefits</u>				
210 Group Insurance – Contracted Provider			438,136.35	438,136.35
220 Social Security Contributions			102,651.04	102,651.04
230 PSERS Retirement Contributions			236,294.79	236,294.79
250 Unemployment Compensation			2,722.92	2,722.92
260 Workers' Compensation			4,687.31	4,687.31
Total Personnel Services – Employee Benefits			\$784,492.41	\$784,492.41
300 <u>Purchased Professional and Technical Services</u>				
329 Professional Educational Services – Other			81,840.98	81,840.98
Total Purchased Professional and Technical Services			\$81,840.98	\$81,840.98
600 <u>Supplies</u>				
610 General Supplies			153,396.35	153,396.35
Total Supplies			\$153,396.35	\$153,396.35
Total 1190 Federally-Funded Regular Programs			\$2,398,280.68	\$2,398,280.68

LEA : 111444602 Mifflin County SD

Printed 11/15/2019 11:22:27 AM

General Fund (10)

1200 Special Programs – Elementary / Secondary

	Elementary	Secondary	Federal	Total
100 Personnel Services – Salaries				
100 Personnel Services – Salaries	2,878,293.67	1,948,376.55	489,943.64	5,316,613.86
Total Personnel Services – Salaries	\$2,878,293.67	\$1,948,376.55	\$489,943.64	\$5,316,613.86
200 Personnel Services – Employee Benefits				
210 Group Insurance – Contracted Provider	954,335.32	658,069.38	213,365.28	1,825,769.98
220 Social Security Contributions	215,090.81	145,066.71	36,795.29	396,952.81
230 PSERS Retirement Contributions	946,898.21	695,901.86	79,781.45	1,722,581.52
250 Unemployment Compensation	3,509.02	2,368.94	980.77	6,858.73
260 Workers' Compensation	15,543.78	10,512.30	1,761.80	27,817.88
Total Personnel Services – Employee Benefits	\$2,135,377.14	\$1,511,919.19	\$332,684.59	\$3,979,980.92
300 Purchased Professional and Technical Services				
322 Professional Educational Services – lus	71,239.10		12,927.00	84,166.10
329 Professional Educational Services – Other	144,968.96	116,704.09	3,577.82	265,250.87
330 Other Professional Services			1,120.00	1,120.00
Total Purchased Professional and Technical Services	\$216,208.06	\$116,704.09	\$17,624.82	\$350,536.97
400 Purchased Property Services				
430 Repairs and Maintenance Services	1,804.79	825.99		2,630.78
Total Purchased Property Services	\$1,804.79	\$825.99		\$2,630.78
500 Other Purchased Services				
510 Student Transportation Services	82.50	170.50		253.00
530 Communications		1,589.96		1,589.96
561 Tuition To Other School Districts Within the State		673,732.21		673,732.21
562 Tuition To Pennsylvania Charter Schools		837,847.30		837,847.30
568 Tuition To Private Residential Rehabilitative Institutions (PRRI) [In-State] and Detention Centers	245.10	27,438.81		27,683.91
580 Travel	1,680.96	7,753.03	346.03	9,780.02
594 IU Payment By Withholding for Institutionalized Children's Programs – Special Classes	770.81			770.81
Total Other Purchased Services	\$2,779.37	\$1,548,531.81	\$346.03	\$1,551,657.21
600 Supplies				
610 General Supplies	35,849.24	22,393.72		58,242.96
640 Books and Periodicals	141.54			141.54
Total Supplies	\$35,990.78	\$22,393.72		\$58,384.50
800 Other Objects				
810 Dues and Fees	727.75	348.25		1,076.00
Total Other Objects	\$727.75	\$348.25		\$1,076.00
Total 1200 Special Programs – Elementary / Secondary	\$5,271,181.56	\$5,149,099.60	\$840,599.08	\$11,260,880.24

LEA : 111444602 Mifflin County SD

Printed 11/15/2019 11:22:27 AM

General Fund (10)				
1210 Life Skills Support	<u>Elementary</u>	<u>Secondary</u>	<u>Federal</u>	<u>Total</u>
100 <u>Personnel Services – Salaries</u>				
100 Personnel Services – Salaries	432,641.88	506,167.66		938,809.54
Total Personnel Services – Salaries	\$432,641.88	\$506,167.66		\$938,809.54
200 <u>Personnel Services – Employee Benefits</u>				
210 Group Insurance – Contracted Provider	169,709.55	227,666.05		397,375.60
220 Social Security Contributions	32,008.40	37,612.60		69,621.00
230 PSERS Retirement Contributions	142,924.83	164,590.49		307,515.32
250 Unemployment Compensation	525.29	612.76		1,138.05
260 Workers' Compensation	2,352.43	2,790.91		5,143.34
Total Personnel Services – Employee Benefits	\$347,520.50	\$433,272.81		\$780,793.31
300 <u>Purchased Professional and Technical Services</u>				
329 Professional Educational Services – Other	19,147.94	20,451.47		39,599.41
Total Purchased Professional and Technical Services	\$19,147.94	\$20,451.47		\$39,599.41
500 <u>Other Purchased Services</u>				
510 Student Transportation Services		88.00		88.00
580 Travel	85.38			85.38
Total Other Purchased Services	\$85.38	\$88.00		\$173.38
600 <u>Supplies</u>				
610 General Supplies	2,182.74	3,206.51		5,389.25
Total Supplies	\$2,182.74	\$3,206.51		\$5,389.25
Total 1210 Life Skills Support	\$801,578.44	\$963,186.45		\$1,764,764.89

LEA : 111444602 Mifflin County SD

Printed 11/15/2019 11:22:27 AM

General Fund (10)

1220 Sensory Support

	<u>Elementary</u>	<u>Secondary</u>	<u>Federal</u>	<u>Total</u>
100 <u>Personnel Services – Salaries</u>				
100 Personnel Services – Salaries	358,513.31	85,585.50		444,098.81
Total Personnel Services – Salaries	\$358,513.31	\$85,585.50		\$444,098.81
200 <u>Personnel Services – Employee Benefits</u>				
210 Group Insurance – Contracted Provider	92,959.36	27,017.82		119,977.18
220 Social Security Contributions	26,952.29	6,312.79		33,265.08
230 PSERS Retirement Contributions	117,783.75	28,611.22		146,394.97
250 Unemployment Compensation	439.03	104.79		543.82
260 Workers' Compensation	1,894.29	451.70		2,345.99
Total Personnel Services – Employee Benefits	\$240,028.72	\$62,498.32		\$302,527.04
300 <u>Purchased Professional and Technical Services</u>				
329 Professional Educational Services – Other	8,503.93	344.30		8,848.23
Total Purchased Professional and Technical Services	\$8,503.93	\$344.30		\$8,848.23
400 <u>Purchased Property Services</u>				
430 Repairs and Maintenance Services	1,804.79	825.99		2,630.78
Total Purchased Property Services	\$1,804.79	\$825.99		\$2,630.78
500 <u>Other Purchased Services</u>				
580 Travel	621.72	776.07		1,397.79
Total Other Purchased Services	\$621.72	\$776.07		\$1,397.79
600 <u>Supplies</u>				
610 General Supplies	6,837.52	1,544.16		8,381.68
640 Books and Periodicals	141.54			141.54
Total Supplies	\$6,979.06	\$1,544.16		\$8,523.22
800 <u>Other Objects</u>				
810 Dues and Fees	727.75	348.25		1,076.00
Total Other Objects	\$727.75	\$348.25		\$1,076.00
Total 1220 Sensory Support	\$617,179.28	\$151,922.59		\$769,101.87

LEA : 111444602 Mifflin County SD

Printed 11/15/2019 11:22:27 AM

General Fund (10)

1230 Emotional Support

	Elementary	Secondary	Federal	Total
100 Personnel Services – Salaries				
100 Personnel Services – Salaries	899,396.62	283,790.75	66,530.00	1,249,717.37
Total Personnel Services – Salaries	\$899,396.62	\$283,790.75	\$66,530.00	\$1,249,717.37
200 Personnel Services – Employee Benefits				
210 Group Insurance – Contracted Provider	298,906.51	63,868.84	758.76	363,534.11
220 Social Security Contributions	67,259.85	21,417.32	5,089.52	93,766.69
230 PSERS Retirement Contributions	292,586.79	105,502.18	11,120.49	409,209.46
250 Unemployment Compensation	1,094.79	343.80	133.12	1,571.71
260 Workers' Compensation	4,902.66	1,545.59	226.18	6,674.43
Total Personnel Services – Employee Benefits	\$664,750.60	\$192,677.73	\$17,328.07	\$874,756.40
300 Purchased Professional and Technical Services				
329 Professional Educational Services – Other	27,356.45	8,604.32	3,577.82	39,538.59
330 Other Professional Services			1,120.00	1,120.00
Total Purchased Professional and Technical Services	\$27,356.45	\$8,604.32	\$4,697.82	\$40,658.59
500 Other Purchased Services				
561 Tuition To Other School Districts Within the State		208,414.04		208,414.04
568 Tuition To Private Residential Rehabilitative Institutions (PRRI) [In-State] and Detention Centers		13,747.97		13,747.97
580 Travel	19.62	5,482.81	346.03	5,848.46
Total Other Purchased Services	\$19.62	\$227,644.82	\$346.03	\$228,010.47
600 Supplies				
610 General Supplies	15,190.32	4,247.02		19,437.34
Total Supplies	\$15,190.32	\$4,247.02		\$19,437.34
Total 1230 Emotional Support	\$1,606,713.61	\$716,964.64	\$88,901.92	\$2,412,580.17

LEA : 111444602 Mifflin County SD

Printed 11/15/2019 11:22:27 AM

General Fund (10)				
1240 Academic Support	<u>Elementary</u>	<u>Secondary</u>	<u>Federal</u>	<u>Total</u>
100 <u>Personnel Services – Salaries</u>				
100 Personnel Services – Salaries	1,081,900.73	1,071,457.56	423,413.64	2,576,771.93
Total Personnel Services – Salaries	\$1,081,900.73	\$1,071,457.56	\$423,413.64	\$2,576,771.93
200 <u>Personnel Services – Employee Benefits</u>				
210 Group Insurance – Contracted Provider	371,009.46	337,707.48	212,606.52	921,323.46
220 Social Security Contributions	80,844.67	79,621.01	31,705.77	192,171.45
230 PSERS Retirement Contributions	359,347.79	396,738.23	68,660.96	824,746.98
250 Unemployment Compensation	1,320.23	1,305.93	847.65	3,473.81
260 Workers' Compensation	5,834.23	5,716.91	1,535.62	13,086.76
Total Personnel Services – Employee Benefits	\$818,356.38	\$821,089.56	\$315,356.52	\$1,954,802.46
300 <u>Purchased Professional and Technical Services</u>				
329 Professional Educational Services – Other	63,692.51	61,035.88		124,728.39
Total Purchased Professional and Technical Services	\$63,692.51	\$61,035.88		\$124,728.39
500 <u>Other Purchased Services</u>				
510 Student Transportation Services	82.50	82.50		165.00
530 Communications		1,589.96		1,589.96
561 Tuition To Other School Districts Within the State		465,318.17		465,318.17
562 Tuition To Pennsylvania Charter Schools		837,847.30		837,847.30
580 Travel	256.13	910.64		1,166.77
Total Other Purchased Services	\$338.63	\$1,305,748.57		\$1,306,087.20
600 <u>Supplies</u>				
610 General Supplies	10,815.39	5,420.78		16,236.17
Total Supplies	\$10,815.39	\$5,420.78		\$16,236.17
Total 1240 Academic Support	\$1,975,103.64	\$3,264,752.35	\$738,770.16	\$5,978,626.15

LEA : 111444602 Mifflin County SD

Printed 11/15/2019 11:22:27 AM

General Fund (10)

1241 Learning Support – Public	Elementary	Secondary	Federal	Total
100 Personnel Services – Salaries				
100 Personnel Services – Salaries	1,055,380.79	1,044,937.62	423,413.64	2,523,732.05
Total Personnel Services – Salaries	\$1,055,380.79	\$1,044,937.62	\$423,413.64	\$2,523,732.05
200 Personnel Services – Employee Benefits				
210 Group Insurance – Contracted Provider	366,821.40	333,519.43	212,606.52	912,947.35
220 Social Security Contributions	78,893.38	77,669.72	31,705.77	188,268.87
230 PSERS Retirement Contributions	350,482.15	387,872.59	68,660.96	807,015.70
250 Unemployment Compensation	1,287.76	1,273.46	847.65	3,408.87
260 Workers' Compensation	5,694.62	5,577.30	1,535.62	12,807.54
Total Personnel Services – Employee Benefits	\$803,179.31	\$805,912.50	\$315,356.52	\$1,924,448.33
300 Purchased Professional and Technical Services				
329 Professional Educational Services – Other	63,692.51	61,035.88		124,728.39
Total Purchased Professional and Technical Services	\$63,692.51	\$61,035.88		\$124,728.39
500 Other Purchased Services				
510 Student Transportation Services	82.50	82.50		165.00
530 Communications		1,589.96		1,589.96
561 Tuition To Other School Districts Within the State		465,318.17		465,318.17
562 Tuition To Pennsylvania Charter Schools		837,847.30		837,847.30
580 Travel	256.13			256.13
Total Other Purchased Services	\$338.63	\$1,304,837.93		\$1,305,176.56
600 Supplies				
610 General Supplies	10,579.14	5,262.60		15,841.74
Total Supplies	\$10,579.14	\$5,262.60		\$15,841.74
Total 1241 Learning Support – Public	\$1,933,170.38	\$3,221,986.53	\$738,770.16	\$5,893,927.07

LEA : 111444602 Mifflin County SD

Printed 11/15/2019 11:22:27 AM

General Fund (10)				
1243 Gifted Support	<u>Elementary</u>	<u>Secondary</u>	<u>Federal</u>	<u>Total</u>
100 <u>Personnel Services – Salaries</u>				
100 Personnel Services – Salaries	26,519.94	26,519.94		53,039.88
Total Personnel Services – Salaries	\$26,519.94	\$26,519.94		\$53,039.88
200 <u>Personnel Services – Employee Benefits</u>				
210 Group Insurance – Contracted Provider	4,188.06	4,188.05		8,376.11
220 Social Security Contributions	1,951.29	1,951.29		3,902.58
230 PSERS Retirement Contributions	8,865.64	8,865.64		17,731.28
250 Unemployment Compensation	32.47	32.47		64.94
260 Workers' Compensation	139.61	139.61		279.22
Total Personnel Services – Employee Benefits	\$15,177.07	\$15,177.06		\$30,354.13
500 <u>Other Purchased Services</u>				
580 Travel		910.64		910.64
Total Other Purchased Services		\$910.64		\$910.64
600 <u>Supplies</u>				
610 General Supplies	236.25	158.18		394.43
Total Supplies	\$236.25	\$158.18		\$394.43
Total 1243 Gifted Support	\$41,933.26	\$42,765.82		\$84,699.08

LEA : 111444602 Mifflin County SD

Printed 11/15/2019 11:22:27 AM

General Fund (10)

1260 Physical Support	Elementary	Secondary	Federal	Total
100 Personnel Services – Salaries				
100 Personnel Services – Salaries	105,841.13	1,375.08		107,216.21
Total Personnel Services – Salaries	\$105,841.13	\$1,375.08		\$107,216.21
200 Personnel Services – Employee Benefits				
210 Group Insurance – Contracted Provider	21,750.44	1,809.19		23,559.63
220 Social Security Contributions	8,025.60	102.99		8,128.59
230 PSERS Retirement Contributions	34,255.05	459.74		34,714.79
250 Unemployment Compensation	129.68	1.66		131.34
260 Workers' Compensation	560.17	7.19		567.36
Total Personnel Services – Employee Benefits	\$64,720.94	\$2,380.77		\$67,101.71
300 Purchased Professional and Technical Services				
329 Professional Educational Services – Other	26,268.13	26,268.12		52,536.25
Total Purchased Professional and Technical Services	\$26,268.13	\$26,268.12		\$52,536.25
500 Other Purchased Services				
580 Travel	698.11	583.51		1,281.62
Total Other Purchased Services	\$698.11	\$583.51		\$1,281.62
600 Supplies				
610 General Supplies	823.27	7,975.25		8,798.52
Total Supplies	\$823.27	\$7,975.25		\$8,798.52
Total 1260 Physical Support	\$198,351.58	\$38,582.73		\$236,934.31

LEA : 111444602 Mifflin County SD

Printed 11/15/2019 11:22:27 AM

General Fund (10)

1290 Special Programs - Other Support	<u>Elementary</u>	<u>Secondary</u>	<u>Federal</u>	<u>Total</u>
300 <u>Purchased Professional and Technical Services</u>				
322 Professional Educational Services – Ius	71,239.10		12,927.00	84,166.10
Total Purchased Professional and Technical Services	\$71,239.10		\$12,927.00	\$84,166.10
500 <u>Other Purchased Services</u>				
568 Tuition To Private Residential Rehabilitative Institutions (PRRI) [In-State] and Detention Centers	245.10	13,690.84		13,935.94
594 IU Payment By Withholding for Institutionalized Children's Programs – Special Classes	770.81			770.81
Total Other Purchased Services	\$1,015.91	\$13,690.84		\$14,706.75
Total 1290 Special Programs - Other Support	\$72,255.01	\$13,690.84	\$12,927.00	\$98,872.85

LEA : 111444602 Mifflin County SD

Printed 11/15/2019 11:22:27 AM

General Fund (10)				
1300 Vocational Education	<u>Elementary</u>	<u>Secondary</u>	<u>Federal</u>	<u>Total</u>
100 <u>Personnel Services – Salaries</u>				
100 Personnel Services – Salaries		884,953.68		884,953.68
Total Personnel Services – Salaries		\$884,953.68		\$884,953.68
200 <u>Personnel Services – Employee Benefits</u>				
210 Group Insurance – Contracted Provider		272,693.16		272,693.16
220 Social Security Contributions		65,713.79		65,713.79
230 PSERS Retirement Contributions		293,969.06		293,969.06
250 Unemployment Compensation		1,083.87		1,083.87
260 Workers' Compensation		4,686.24		4,686.24
Total Personnel Services – Employee Benefits		\$638,146.12		\$638,146.12
300 <u>Purchased Professional and Technical Services</u>				
329 Professional Educational Services – Other		33,303.14		33,303.14
Total Purchased Professional and Technical Services		\$33,303.14		\$33,303.14
400 <u>Purchased Property Services</u>				
430 Repairs and Maintenance Services		743.93		743.93
Total Purchased Property Services		\$743.93		\$743.93
500 <u>Other Purchased Services</u>				
564 Tuition To Career and Technology Centers		1,828,508.00		1,828,508.00
Total Other Purchased Services		\$1,828,508.00		\$1,828,508.00
600 <u>Supplies</u>				
610 General Supplies		51,179.71		51,179.71
640 Books and Periodicals		10,357.87		10,357.87
Total Supplies		\$61,537.58		\$61,537.58
Total 1300 Vocational Education		\$3,447,192.45		\$3,447,192.45

LEA : 111444602 Mifflin County SD

Printed 11/15/2019 11:22:27 AM

General Fund (10)				
1400 Other Instructional Programs – Elementary / Secondary	<u>Elementary</u>	<u>Secondary</u>	<u>Federal</u>	<u>Total</u>
100 <u>Personnel Services – Salaries</u>				
100 Personnel Services – Salaries	65,362.82	299,534.52		364,897.34
Total Personnel Services – Salaries	\$65,362.82	\$299,534.52		\$364,897.34
200 <u>Personnel Services – Employee Benefits</u>				
210 Group Insurance – Contracted Provider	85.32	89,941.33		90,026.65
220 Social Security Contributions	4,997.19	22,255.48		27,252.67
230 PSERS Retirement Contributions	20,723.20	99,664.55		120,387.75
250 Unemployment Compensation	80.10	364.17		444.27
260 Workers' Compensation	348.55	1,584.65		1,933.20
Total Personnel Services – Employee Benefits	\$26,234.36	\$213,810.18		\$240,044.54
300 <u>Purchased Professional and Technical Services</u>				
329 Professional Educational Services – Other	4,485.50	11,678.75		16,164.25
Total Purchased Professional and Technical Services	\$4,485.50	\$11,678.75		\$16,164.25
500 <u>Other Purchased Services</u>				
530 Communications		98.30		98.30
561 Tuition To Other School Districts Within the State		78,483.95		78,483.95
568 Tuition To Private Residential Rehabilitative Institutions (PRRI) [In-State] and Detention Centers		67,440.00		67,440.00
580 Travel		91.35		91.35
Total Other Purchased Services		\$146,113.60		\$146,113.60
600 <u>Supplies</u>				
610 General Supplies		30,504.90		30,504.90
640 Books and Periodicals	66,912.50	147,081.28		213,993.78
Total Supplies	\$66,912.50	\$177,586.18		\$244,498.68
Total 1400 Other Instructional Programs – Elementary / Secondary	\$162,995.18	\$848,723.23		\$1,011,718.41

LEA : 111444602 Mifflin County SD

Printed 11/15/2019 11:22:27 AM

General Fund (10)

1430 Homebound Instruction	<u>Elementary</u>	<u>Secondary</u>	<u>Federal</u>	<u>Total</u>
100 <u>Personnel Services – Salaries</u>				
100 Personnel Services – Salaries	910.00	546.00		1,456.00
Total Personnel Services – Salaries	\$910.00	\$546.00		\$1,456.00
200 <u>Personnel Services – Employee Benefits</u>				
220 Social Security Contributions	66.63	41.26		107.89
230 PSERS Retirement Contributions	304.21	182.52		486.73
250 Unemployment Compensation	1.12	0.67		1.79
260 Workers' Compensation	3.10	1.85		4.95
Total Personnel Services – Employee Benefits	\$375.06	\$226.30		\$601.36
Total 1430 Homebound Instruction	\$1,285.06	\$772.30		\$2,057.36

LEA : 111444602 Mifflin County SD

Printed 11/15/2019 11:22:27 AM

General Fund (10)				
1440 Alternative Regular Education Programs	<u>Elementary</u>	<u>Secondary</u>	<u>Federal</u>	<u>Total</u>
100 <u>Personnel Services – Salaries</u>				
100 Personnel Services – Salaries	64,452.82	298,988.52		363,441.34
Total Personnel Services – Salaries	\$64,452.82	\$298,988.52		\$363,441.34
200 <u>Personnel Services – Employee Benefits</u>				
210 Group Insurance – Contracted Provider	85.32	89,941.33		90,026.65
220 Social Security Contributions	4,930.56	22,214.22		27,144.78
230 PSERS Retirement Contributions	20,418.99	99,482.03		119,901.02
250 Unemployment Compensation	78.98	363.50		442.48
260 Workers' Compensation	345.45	1,582.80		1,928.25
Total Personnel Services – Employee Benefits	\$25,859.30	\$213,583.88		\$239,443.18
300 <u>Purchased Professional and Technical Services</u>				
329 Professional Educational Services – Other	4,485.50	11,678.75		16,164.25
Total Purchased Professional and Technical Services	\$4,485.50	\$11,678.75		\$16,164.25
500 <u>Other Purchased Services</u>				
530 Communications		98.30		98.30
561 Tuition To Other School Districts Within the State		78,483.95		78,483.95
568 Tuition To Private Residential Rehabilitative Institutions (PRRI) [In-State] and Detention Centers		67,440.00		67,440.00
580 Travel		91.35		91.35
Total Other Purchased Services		\$146,113.60		\$146,113.60
600 <u>Supplies</u>				
610 General Supplies		30,504.90		30,504.90
640 Books and Periodicals	66,912.50	147,081.28		213,993.78
Total Supplies	\$66,912.50	\$177,586.18		\$244,498.68
Total 1440 Alternative Regular Education Programs	\$161,710.12	\$847,950.93		\$1,009,661.05

LEA : 111444602 Mifflin County SD

Printed 11/15/2019 11:22:27 AM

General Fund (10)

1441 Adjudicated / Court-Placed Programs	<u>Elementary</u>	<u>Secondary</u>	<u>Federal</u>	<u>Total</u>
100 <u>Personnel Services – Salaries</u>				
100 Personnel Services – Salaries		3,346.00		3,346.00
Total Personnel Services – Salaries		\$3,346.00		\$3,346.00
200 <u>Personnel Services – Employee Benefits</u>				
220 Social Security Contributions		251.37		251.37
230 PSERS Retirement Contributions		1,118.57		1,118.57
250 Unemployment Compensation		4.10		4.10
260 Workers' Compensation		16.33		16.33
Total Personnel Services – Employee Benefits		\$1,390.37		\$1,390.37
500 <u>Other Purchased Services</u>				
561 Tuition To Other School Districts Within the State		78,483.95		78,483.95
Total Other Purchased Services		\$78,483.95		\$78,483.95
Total 1441 Adjudicated / Court-Placed Programs		\$83,220.32		\$83,220.32

LEA : 111444602 Mifflin County SD

Printed 11/15/2019 11:22:27 AM

General Fund (10)

1442 Alternative Education Programs	Elementary	Secondary	Federal	Total
100 <u>Personnel Services – Salaries</u>				
100 Personnel Services – Salaries	64,452.82	295,642.52		360,095.34
Total Personnel Services – Salaries	\$64,452.82	\$295,642.52		\$360,095.34
200 <u>Personnel Services – Employee Benefits</u>				
210 Group Insurance – Contracted Provider	85.32	89,941.33		90,026.65
220 Social Security Contributions	4,930.56	21,962.85		26,893.41
230 PSERS Retirement Contributions	20,418.99	98,363.46		118,782.45
250 Unemployment Compensation	78.98	359.40		438.38
260 Workers' Compensation	345.45	1,566.47		1,911.92
Total Personnel Services – Employee Benefits	\$25,859.30	\$212,193.51		\$238,052.81
300 <u>Purchased Professional and Technical Services</u>				
329 Professional Educational Services – Other	4,485.50	11,678.75		16,164.25
Total Purchased Professional and Technical Services	\$4,485.50	\$11,678.75		\$16,164.25
500 <u>Other Purchased Services</u>				
530 Communications		98.30		98.30
568 Tuition To Private Residential Rehabilitative Institutions (PRRI) [In-State] and Detention Centers		67,440.00		67,440.00
580 Travel		91.35		91.35
Total Other Purchased Services		\$67,629.65		\$67,629.65
600 <u>Supplies</u>				
610 General Supplies		30,504.90		30,504.90
640 Books and Periodicals	66,912.50	147,081.28		213,993.78
Total Supplies	\$66,912.50	\$177,586.18		\$244,498.68
Total 1442 Alternative Education Programs	\$161,710.12	\$764,730.61		\$926,440.73

LEA : 111444602 Mifflin County SD

Printed 11/15/2019 11:22:27 AM

General Fund (10)

1500 Nonpublic School Programs	<u>Elementary</u>	<u>Secondary</u>	<u>Federal</u>	<u>Total</u>
100 <u>Personnel Services – Salaries</u>				
100 Personnel Services – Salaries			50,180.00	50,180.00
Total Personnel Services – Salaries			\$50,180.00	\$50,180.00
200 <u>Personnel Services – Employee Benefits</u>				
210 Group Insurance – Contracted Provider			23,589.80	23,589.80
220 Social Security Contributions			3,709.49	3,709.49
230 PSERS Retirement Contributions			8,387.60	8,387.60
250 Unemployment Compensation			100.36	100.36
260 Workers' Compensation			170.56	170.56
Total Personnel Services – Employee Benefits			\$35,957.81	\$35,957.81
500 <u>Other Purchased Services</u>				
580 Travel			1,906.40	1,906.40
Total Other Purchased Services			\$1,906.40	\$1,906.40
600 <u>Supplies</u>				
610 General Supplies			451.92	451.92
Total Supplies			\$451.92	\$451.92
Total 1500 Nonpublic School Programs			\$88,496.13	\$88,496.13

LEA : 111444602 Mifflin County SD

Printed 11/15/2019 11:22:40 AM

General Fund (10)

2000 Support Services

Total

100 Personnel Services – Salaries

100 Personnel Services – Salaries	7,490,849.69
-----------------------------------	--------------

Total Personnel Services – Salaries	\$7,490,849.69
--	-----------------------

200 Personnel Services – Employee Benefits

210 Group Insurance – Contracted Provider	2,045,523.30
---	--------------

220 Social Security Contributions	562,939.92
-----------------------------------	------------

230 PSERS Retirement Contributions	2,423,701.11
------------------------------------	--------------

240 Tuition Reimbursement	300,549.77
---------------------------	------------

250 Unemployment Compensation	9,257.59
-------------------------------	----------

260 Workers' Compensation	39,533.42
---------------------------	-----------

291 Other Retirement Plans	16,942.76
----------------------------	-----------

Total Personnel Services – Employee Benefits	\$5,398,447.87
---	-----------------------

300 Purchased Professional and Technical Services

310 Official / Administrative Services	201,769.54
--	------------

329 Professional Educational Services – Other	75,262.61
---	-----------

330 Other Professional Services	148,897.28
---------------------------------	------------

340 Technical Services	125,295.10
------------------------	------------

350 Security / Safety Services	81,804.94
--------------------------------	-----------

360 Employee Training and Development Services	51,987.50
--	-----------

390 Other Purchased Professional and Technical Services	5,251.25
---	----------

Total Purchased Professional and Technical Services	\$690,268.22
--	---------------------

400 Purchased Property Services

410 Cleaning Services	87,809.65
-----------------------	-----------

420 Utility Services	880,584.29
----------------------	------------

430 Repairs and Maintenance Services	666,465.35
--------------------------------------	------------

440 Rentals	4,202.02
-------------	----------

Total Purchased Property Services	\$1,639,061.31
--	-----------------------

500 Other Purchased Services

513 Contracted Carriers	4,695,760.01
-------------------------	--------------

516 Student Transportation Services From the IU	94,187.12
---	-----------

519 Student Transportation Services From Other Sources	737.05
--	--------

520 Insurance – General	15,397.00
-------------------------	-----------

523 General Property and Liability Insurance	203,345.46
--	------------

529 Other Insurance	33,681.54
---------------------	-----------

530 Communications	30,786.77
--------------------	-----------

549 Other Advertising/Public Relations	23,202.57
--	-----------

550 Printing and Binding	1,124.70
--------------------------	----------

580 Travel	64,200.69
------------	-----------

591 Services Purchased Locally	12,062.56
--------------------------------	-----------

Total Other Purchased Services	\$5,174,485.47
---------------------------------------	-----------------------

600 Supplies

610 General Supplies	407,153.56
----------------------	------------

620 Energy	229,519.84
------------	------------

640 Books and Periodicals	84,596.39
---------------------------	-----------

LEA : 111444602 Mifflin County SD

Printed 11/15/2019 11:22:40 AM

General Fund (10)

2000 Support Services

	<u>Total</u>
Total Supplies	\$721,269.79
700 <u>Property</u>	
752 Capital Equipment – Original and Additional	43,186.59
768 Capitalized Technology Software - Replacement	12,097.69
Total Property	\$55,284.28
800 <u>Other Objects</u>	
810 Dues and Fees	45,841.82
820 Claims and Judgments Against the LEA	32,102.68
Total Other Objects	\$77,944.50
Total 2000 Support Services	\$21,247,611.13

LEA : 111444602 Mifflin County SD

Printed 11/15/2019 11:22:40 AM

General Fund (10)				
2100 Support Services – Students	<u>Elementary</u>	<u>Secondary</u>	<u>Federal</u>	<u>Total</u>
100 <u>Personnel Services – Salaries</u>				
100 Personnel Services – Salaries	411,245.10	567,820.92	90,125.02	1,069,191.04
Total Personnel Services – Salaries	\$411,245.10	\$567,820.92	\$90,125.02	\$1,069,191.04
200 <u>Personnel Services – Employee Benefits</u>				
210 Group Insurance – Contracted Provider	71,952.82	148,231.92	24,784.00	244,968.74
220 Social Security Contributions	30,662.28	42,542.85	6,769.22	79,974.35
230 PSERS Retirement Contributions	135,223.85	188,695.47	15,066.39	338,985.71
250 Unemployment Compensation	503.63	695.25	180.18	1,379.06
260 Workers' Compensation	2,182.18	3,006.60	306.28	5,495.06
Total Personnel Services – Employee Benefits	\$240,524.76	\$383,172.09	\$47,106.07	\$670,802.92
300 <u>Purchased Professional and Technical Services</u>				
329 Professional Educational Services – Other	10,240.00	969.69		11,209.69
Total Purchased Professional and Technical Services	\$10,240.00	\$969.69		\$11,209.69
500 <u>Other Purchased Services</u>				
580 Travel	487.93	265.50	1,300.43	2,053.86
Total Other Purchased Services	\$487.93	\$265.50	\$1,300.43	\$2,053.86
600 <u>Supplies</u>				
610 General Supplies	3,083.75	3,730.61		6,814.36
Total Supplies	\$3,083.75	\$3,730.61		\$6,814.36
Total 2100 Support Services – Students	\$665,581.54	\$955,958.81	\$138,531.52	\$1,760,071.87

LEA : 111444602 Mifflin County SD

Printed 11/15/2019 11:22:40 AM

General Fund (10)

2120 Guidance Services	Elementary	Secondary	Federal	Total
100 <u>Personnel Services – Salaries</u>				
100 Personnel Services – Salaries	222,584.19	504,653.36	45,505.90	772,743.45
Total Personnel Services – Salaries	\$222,584.19	\$504,653.36	\$45,505.90	\$772,743.45
200 <u>Personnel Services – Employee Benefits</u>				
210 Group Insurance – Contracted Provider	50,989.27	135,427.85	6,450.89	192,868.01
220 Social Security Contributions	16,775.18	37,776.82	3,435.40	57,987.40
230 PSERS Retirement Contributions	73,282.28	167,578.47	7,606.26	248,467.01
250 Unemployment Compensation	272.59	617.97	91.00	981.56
260 Workers' Compensation	1,182.15	2,670.64	154.70	4,007.49
Total Personnel Services – Employee Benefits	\$142,501.47	\$344,071.75	\$17,738.25	\$504,311.47
300 <u>Purchased Professional and Technical Services</u>				
329 Professional Educational Services – Other	10,240.00	969.69		11,209.69
Total Purchased Professional and Technical Services	\$10,240.00	\$969.69		\$11,209.69
500 <u>Other Purchased Services</u>				
580 Travel		22.97		22.97
Total Other Purchased Services		\$22.97		\$22.97
600 <u>Supplies</u>				
610 General Supplies	1,040.59	1,047.77		2,088.36
Total Supplies	\$1,040.59	\$1,047.77		\$2,088.36
Total 2120 Guidance Services	\$376,366.25	\$850,765.54	\$63,244.15	\$1,290,375.94

LEA : 111444602 Mifflin County SD

Printed 11/15/2019 11:22:40 AM

General Fund (10)

2140 Psychological Services	Elementary	Secondary	Federal	Total
100 <u>Personnel Services – Salaries</u>				
100 Personnel Services – Salaries	188,660.91	63,167.56		251,828.47
Total Personnel Services – Salaries	\$188,660.91	\$63,167.56		\$251,828.47
200 <u>Personnel Services – Employee Benefits</u>				
210 Group Insurance – Contracted Provider	20,963.55	12,804.07		33,767.62
220 Social Security Contributions	13,887.10	4,766.03		18,653.13
230 PSERS Retirement Contributions	61,941.57	21,117.00		83,058.57
250 Unemployment Compensation	231.04	77.28		308.32
260 Workers' Compensation	1,000.03	335.96		1,335.99
Total Personnel Services – Employee Benefits	\$98,023.29	\$39,100.34		\$137,123.63
500 <u>Other Purchased Services</u>				
580 Travel	487.93	242.53		730.46
Total Other Purchased Services	\$487.93	\$242.53		\$730.46
600 <u>Supplies</u>				
610 General Supplies	2,043.16	2,682.84		4,726.00
Total Supplies	\$2,043.16	\$2,682.84		\$4,726.00
Total 2140 Psychological Services	\$289,215.29	\$105,193.27		\$394,408.56

LEA : 111444602 Mifflin County SD

Printed 11/15/2019 11:22:40 AM

General Fund (10)

2160 Social Work Services

100 Personnel Services – Salaries

	<u>Elementary</u>	<u>Secondary</u>	<u>Federal</u>	<u>Total</u>
100 Personnel Services – Salaries			44,619.12	44,619.12
Total Personnel Services – Salaries			\$44,619.12	\$44,619.12

200 Personnel Services – Employee Benefits

210 Group Insurance – Contracted Provider			18,333.11	18,333.11
220 Social Security Contributions			3,333.82	3,333.82
230 PSERS Retirement Contributions			7,460.13	7,460.13
250 Unemployment Compensation			89.18	89.18
260 Workers' Compensation			151.58	151.58
Total Personnel Services – Employee Benefits			\$29,367.82	\$29,367.82

500 Other Purchased Services

580 Travel			1,300.43	1,300.43
Total Other Purchased Services			\$1,300.43	\$1,300.43
Total 2160 Social Work Services			\$75,287.37	\$75,287.37

LEA : 111444602 Mifflin County SD

Printed 11/15/2019 11:22:40 AM

General Fund (10)				
2200 Support Services – Instructional Staff	<u>Elementary</u>	<u>Secondary</u>	<u>Federal</u>	<u>Total</u>
100 <u>Personnel Services – Salaries</u>				
100 Personnel Services – Salaries	408,605.59	269,825.74	73,858.50	752,289.83
Total Personnel Services – Salaries	\$408,605.59	\$269,825.74	\$73,858.50	\$752,289.83
200 <u>Personnel Services – Employee Benefits</u>				
210 Group Insurance – Contracted Provider	83,769.66	20,793.51	16,956.19	121,519.36
220 Social Security Contributions	30,874.61	20,623.48	5,625.15	57,123.24
230 PSERS Retirement Contributions	136,879.20	89,930.82	12,342.58	239,152.60
240 Tuition Reimbursement	173,987.11	90,404.66		264,391.77
250 Unemployment Compensation	498.18	329.99	146.26	974.43
260 Workers' Compensation	2,159.08	1,430.15	252.16	3,841.39
Total Personnel Services – Employee Benefits	\$428,167.84	\$223,512.61	\$35,322.34	\$687,002.79
300 <u>Purchased Professional and Technical Services</u>				
329 Professional Educational Services – Other	18,791.30	15,689.57	5,000.00	39,480.87
360 Employee Training and Development Services	26,262.30	12,976.56	12,748.64	51,987.50
Total Purchased Professional and Technical Services	\$45,053.60	\$28,666.13	\$17,748.64	\$91,468.37
500 <u>Other Purchased Services</u>				
530 Communications	160.88	160.87		321.75
580 Travel	19,726.99	13,601.97	5,798.27	39,127.23
Total Other Purchased Services	\$19,887.87	\$13,762.84	\$5,798.27	\$39,448.98
600 <u>Supplies</u>				
610 General Supplies	21,261.27	23,695.79	10,396.96	55,354.02
640 Books and Periodicals	14,277.05	5,665.10	500.00	20,442.15
Total Supplies	\$35,538.32	\$29,360.89	\$10,896.96	\$75,796.17
800 <u>Other Objects</u>				
810 Dues and Fees	807.50	807.50		1,615.00
Total Other Objects	\$807.50	\$807.50		\$1,615.00
Total 2200 Support Services – Instructional Staff	\$938,060.72	\$565,935.71	\$143,624.71	\$1,647,621.14

LEA : 111444602 Mifflin County SD

Printed 11/15/2019 11:22:40 AM

General Fund (10)

2250 School Library Services	Elementary	Secondary	Federal	Total
100 Personnel Services – Salaries				
100 Personnel Services – Salaries	226,258.69	111,956.38		338,215.07
Total Personnel Services – Salaries	\$226,258.69	\$111,956.38		\$338,215.07
200 Personnel Services – Employee Benefits				
210 Group Insurance – Contracted Provider	63,940.29	964.17		64,904.46
220 Social Security Contributions	16,982.78	8,564.63		25,547.41
230 PSERS Retirement Contributions	75,356.51	36,581.39		111,937.90
250 Unemployment Compensation	277.09	137.04		414.13
260 Workers' Compensation	1,197.13	595.84		1,792.97
Total Personnel Services – Employee Benefits	\$157,753.80	\$46,843.07		\$204,596.87
300 Purchased Professional and Technical Services				
329 Professional Educational Services – Other	6,708.43	3,590.45		10,298.88
Total Purchased Professional and Technical Services	\$6,708.43	\$3,590.45		\$10,298.88
500 Other Purchased Services				
580 Travel	53.19			53.19
Total Other Purchased Services	\$53.19			\$53.19
600 Supplies				
610 General Supplies	10,308.83	12,438.77		22,747.60
640 Books and Periodicals	14,277.05	5,665.10		19,942.15
Total Supplies	\$24,585.88	\$18,103.87		\$42,689.75
Total 2250 School Library Services	\$415,359.99	\$180,493.77		\$595,853.76

LEA : 111444602 Mifflin County SD

Printed 11/15/2019 11:22:40 AM

General Fund (10)

2260 Instruction and Curriculum Development Services	Elementary	Secondary	Federal	Total
100 Personnel Services – Salaries				
100 Personnel Services – Salaries	155,599.47	147,598.75	71,338.50	374,536.72
Total Personnel Services – Salaries	\$155,599.47	\$147,598.75	\$71,338.50	\$374,536.72
200 Personnel Services – Employee Benefits				
210 Group Insurance – Contracted Provider	19,829.37	19,829.34	16,956.19	56,614.90
220 Social Security Contributions	11,885.89	11,287.44	5,432.37	28,605.70
230 PSERS Retirement Contributions	52,593.13	49,918.19	11,924.24	114,435.56
250 Unemployment Compensation	190.25	180.67	142.74	513.66
260 Workers' Compensation	821.52	779.62	243.58	1,844.72
Total Personnel Services – Employee Benefits	\$85,320.16	\$81,995.26	\$34,699.12	\$202,014.54
500 Other Purchased Services				
530 Communications	160.88	160.87		321.75
580 Travel	1,080.19	1,080.19		2,160.38
Total Other Purchased Services	\$1,241.07	\$1,241.06		\$2,482.13
600 Supplies				
610 General Supplies	276.47	276.47		552.94
640 Books and Periodicals			500.00	500.00
Total Supplies	\$276.47	\$276.47	\$500.00	\$1,052.94
800 Other Objects				
810 Dues and Fees	807.50	807.50		1,615.00
Total Other Objects	\$807.50	\$807.50		\$1,615.00
Total 2260 Instruction and Curriculum Development Services	\$243,244.67	\$231,919.04	\$106,537.62	\$581,701.33

LEA : 111444602 Mifflin County SD

Printed 11/15/2019 11:22:40 AM

General Fund (10)				
2270 Instructional Staff Professional Development Services	<u>Elementary</u>	<u>Secondary</u>	<u>Federal</u>	<u>Total</u>
100 <u>Personnel Services – Salaries</u>				
100 Personnel Services – Salaries	26,747.43	10,270.61	2,520.00	39,538.04
Total Personnel Services – Salaries	\$26,747.43	\$10,270.61	\$2,520.00	\$39,538.04
200 <u>Personnel Services – Employee Benefits</u>				
220 Social Security Contributions	2,005.94	771.41	192.78	2,970.13
230 PSERS Retirement Contributions	8,929.56	3,431.24	418.34	12,779.14
240 Tuition Reimbursement	173,987.11	90,404.66		264,391.77
250 Unemployment Compensation	30.84	12.28	3.52	46.64
260 Workers' Compensation	140.43	54.69	8.58	203.70
Total Personnel Services – Employee Benefits	\$185,093.88	\$94,674.28	\$623.22	\$280,391.38
300 <u>Purchased Professional and Technical Services</u>				
329 Professional Educational Services – Other	12,082.87	12,099.12	5,000.00	29,181.99
360 Employee Training and Development Services	26,262.30	12,976.56		39,238.86
Total Purchased Professional and Technical Services	\$38,345.17	\$25,075.68	\$5,000.00	\$68,420.85
500 <u>Other Purchased Services</u>				
580 Travel	18,593.61	12,521.78	2,917.98	34,033.37
Total Other Purchased Services	\$18,593.61	\$12,521.78	\$2,917.98	\$34,033.37
600 <u>Supplies</u>				
610 General Supplies	10,675.97	10,980.55		21,656.52
Total Supplies	\$10,675.97	\$10,980.55		\$21,656.52
Total 2270 Instructional Staff Professional Development Services	\$279,456.06	\$153,522.90	\$11,061.20	\$444,040.16

LEA : 111444602 Mifflin County SD

Printed 11/15/2019 11:22:40 AM

General Fund (10)

2280 Nonpublic Support Services	<u>Elementary</u>	<u>Secondary</u>	<u>Federal</u>	<u>Total</u>
300 <u>Purchased Professional and Technical Services</u>				
360 Employee Training and Development Services			12,748.64	12,748.64
Total Purchased Professional and Technical Services			\$12,748.64	\$12,748.64
500 <u>Other Purchased Services</u>				
580 Travel			2,880.29	2,880.29
Total Other Purchased Services			\$2,880.29	\$2,880.29
600 <u>Supplies</u>				
610 General Supplies			10,396.96	10,396.96
Total Supplies			\$10,396.96	\$10,396.96
Total 2280 Nonpublic Support Services			\$26,025.89	\$26,025.89

LEA : 111444602 Mifflin County SD

Printed 11/15/2019 11:22:40 AM

General Fund (10)				
2300 Support Services – Administration	<u>Elementary</u>	<u>Secondary</u>	<u>Federal</u>	<u>Total</u>
100 <u>Personnel Services – Salaries</u>				
100 Personnel Services – Salaries	998,344.78	886,733.06		2,315,881.66
Total Personnel Services – Salaries	\$998,344.78	\$886,733.06		\$2,315,881.66
200 <u>Personnel Services – Employee Benefits</u>				
210 Group Insurance – Contracted Provider	297,742.04	229,061.57		612,243.81
220 Social Security Contributions	74,977.25	67,179.88		173,574.67
230 PSERS Retirement Contributions	331,824.82	293,615.14		750,555.65
250 Unemployment Compensation	1,207.94	1,086.09		2,752.65
260 Workers' Compensation	5,346.53	4,743.92		12,371.69
291 Other Retirement Plans				15,600.00
Total Personnel Services – Employee Benefits	\$711,098.58	\$595,686.60		\$1,567,098.47
300 <u>Purchased Professional and Technical Services</u>				
310 Official / Administrative Services				105,924.00
329 Professional Educational Services – Other	4,179.73			4,179.73
330 Other Professional Services				135,030.71
Total Purchased Professional and Technical Services	\$4,179.73			\$245,134.44
500 <u>Other Purchased Services</u>				
520 Insurance – General				15,397.00
530 Communications	5,785.79	10,682.57		16,468.36
549 Other Advertising/Public Relations				23,202.57
550 Printing and Binding				1,124.70
580 Travel	2,842.96	129.78		6,027.96
591 Services Purchased Locally				12,062.56
Total Other Purchased Services	\$8,628.75	\$10,812.35		\$74,283.15
600 <u>Supplies</u>				
610 General Supplies	4,602.01	(135.73)		55,564.07
Total Supplies	\$4,602.01	(\$135.73)		\$55,564.07
800 <u>Other Objects</u>				
810 Dues and Fees	2,449.00	2,905.00		39,645.25
820 Claims and Judgments Against the LEA				32,102.68
Total Other Objects	\$2,449.00	\$2,905.00		\$71,747.93
Total 2300 Support Services – Administration	\$1,729,302.85	\$1,496,001.28		\$4,329,709.72

LEA : 111444602 Mifflin County SD

Printed 11/15/2019 11:22:40 AM

General Fund (10)

2310 Board Services

	Elementary	Secondary	Federal	Total
100 <u>Personnel Services – Salaries</u>				
100 Personnel Services – Salaries				4,740.32
Total Personnel Services – Salaries				\$4,740.32
200 <u>Personnel Services – Employee Benefits</u>				
220 Social Security Contributions				358.77
230 PSERS Retirement Contributions				1,584.70
250 Unemployment Compensation				5.89
260 Workers' Compensation				26.01
Total Personnel Services – Employee Benefits				\$1,975.37
300 <u>Purchased Professional and Technical Services</u>				
330 Other Professional Services				47,950.00
Total Purchased Professional and Technical Services				\$47,950.00
500 <u>Other Purchased Services</u>				
520 Insurance – General				700.00
549 Other Advertising/Public Relations				23,202.57
580 Travel				586.49
591 Services Purchased Locally				12,062.56
Total Other Purchased Services				\$36,551.62
600 <u>Supplies</u>				
610 General Supplies				12.30
Total Supplies				\$12.30
800 <u>Other Objects</u>				
810 Dues and Fees				18,821.71
820 Claims and Judgments Against the LEA				32,102.68
Total Other Objects				\$50,924.39
Total 2310 Board Services				\$142,154.00

LEA : 111444602 Mifflin County SD

Printed 11/15/2019 11:22:40 AM

General Fund (10)				
2330 Tax Assessment and Collection Services	<u>Elementary</u>	<u>Secondary</u>	<u>Federal</u>	<u>Total</u>
100 <u>Personnel Services – Salaries</u>				
100 Personnel Services – Salaries				56,542.00
Total Personnel Services – Salaries				\$56,542.00
200 <u>Personnel Services – Employee Benefits</u>				
220 Social Security Contributions				4,325.53
260 Workers’ Compensation				301.15
Total Personnel Services – Employee Benefits				\$4,626.68
300 <u>Purchased Professional and Technical Services</u>				
310 Official / Administrative Services				105,924.00
Total Purchased Professional and Technical Services				\$105,924.00
500 <u>Other Purchased Services</u>				
520 Insurance – General				14,697.00
Total Other Purchased Services				\$14,697.00
600 <u>Supplies</u>				
610 General Supplies				47,443.64
Total Supplies				\$47,443.64
Total 2330 Tax Assessment and Collection Services				\$229,233.32

LEA : 111444602 Mifflin County SD

Printed 11/15/2019 11:22:40 AM

General Fund (10)

2350 Legal and Accounting Services	<u>Elementary</u>	<u>Secondary</u>	<u>Federal</u>	<u>Total</u>
300 <u>Purchased Professional and Technical Services</u>				
330 Other Professional Services				87,080.71
Total Purchased Professional and Technical Services				\$87,080.71
Total 2350 Legal and Accounting Services				\$87,080.71

LEA : 111444602 Mifflin County SD

Printed 11/15/2019 11:22:40 AM

General Fund (10)

2360 Office of the Superintendent / Executive Director Services	<u>Elementary</u>	<u>Secondary</u>	<u>Federal</u>	<u>Total</u>
100 <u>Personnel Services – Salaries</u>				
100 Personnel Services – Salaries				369,521.50
Total Personnel Services – Salaries				\$369,521.50
200 <u>Personnel Services – Employee Benefits</u>				
210 Group Insurance – Contracted Provider				85,440.20
220 Social Security Contributions				26,733.24
230 PSERS Retirement Contributions				123,530.99
250 Unemployment Compensation				452.73
260 Workers' Compensation				1,954.08
291 Other Retirement Plans				15,600.00
Total Personnel Services – Employee Benefits				\$253,711.24
500 <u>Other Purchased Services</u>				
530 Communications	609.30	699.84		1,309.14
550 Printing and Binding				1,124.70
580 Travel				2,468.73
Total Other Purchased Services	\$609.30	\$699.84		\$4,902.57
600 <u>Supplies</u>				
610 General Supplies				3,641.85
Total Supplies				\$3,641.85
800 <u>Other Objects</u>				
810 Dues and Fees				15,469.54
Total Other Objects				\$15,469.54
Total 2360 Office of the Superintendent / Executive Director Services	\$609.30	\$699.84		\$647,246.70

LEA : 111444602 Mifflin County SD

Printed 11/15/2019 11:22:40 AM

General Fund (10)				
2380 Office of the Principal Services	<u>Elementary</u>	<u>Secondary</u>	<u>Federal</u>	<u>Total</u>
100 <u>Personnel Services – Salaries</u>				
100 Personnel Services – Salaries	998,344.78	886,733.06		1,885,077.84
Total Personnel Services – Salaries	\$998,344.78	\$886,733.06		\$1,885,077.84
200 <u>Personnel Services – Employee Benefits</u>				
210 Group Insurance – Contracted Provider	297,742.04	229,061.57		526,803.61
220 Social Security Contributions	74,977.25	67,179.88		142,157.13
230 PSERS Retirement Contributions	331,824.82	293,615.14		625,439.96
250 Unemployment Compensation	1,207.94	1,086.09		2,294.03
260 Workers' Compensation	5,346.53	4,743.92		10,090.45
Total Personnel Services – Employee Benefits	\$711,098.58	\$595,686.60		\$1,306,785.18
300 <u>Purchased Professional and Technical Services</u>				
329 Professional Educational Services – Other	4,179.73			4,179.73
Total Purchased Professional and Technical Services	\$4,179.73			\$4,179.73
500 <u>Other Purchased Services</u>				
530 Communications	5,176.49	9,982.73		15,159.22
580 Travel	2,842.96	129.78		2,972.74
Total Other Purchased Services	\$8,019.45	\$10,112.51		\$18,131.96
600 <u>Supplies</u>				
610 General Supplies	4,602.01	(135.73)		4,466.28
Total Supplies	\$4,602.01	(\$135.73)		\$4,466.28
800 <u>Other Objects</u>				
810 Dues and Fees	2,449.00	2,905.00		5,354.00
Total Other Objects	\$2,449.00	\$2,905.00		\$5,354.00
Total 2380 Office of the Principal Services	\$1,728,693.55	\$1,495,301.44		\$3,223,994.99

LEA : 111444602 Mifflin County SD

Printed 11/15/2019 11:22:40 AM

General Fund (10)

2400 Support Services – Pupil Health	<u>Elementary</u>	<u>Secondary</u>	<u>Federal</u>	<u>Total</u>
100 <u>Personnel Services – Salaries</u>				
100 Personnel Services – Salaries				383,845.09
Total Personnel Services – Salaries				\$383,845.09
200 <u>Personnel Services – Employee Benefits</u>				
210 Group Insurance – Contracted Provider				82,812.05
220 Social Security Contributions				28,905.87
230 PSERS Retirement Contributions				122,399.76
250 Unemployment Compensation				470.03
260 Workers' Compensation				2,066.37
Total Personnel Services – Employee Benefits				\$236,654.08
300 <u>Purchased Professional and Technical Services</u>				
329 Professional Educational Services – Other				20,392.32
330 Other Professional Services				8,696.57
390 Other Purchased Professional and Technical Services				1,110.00
Total Purchased Professional and Technical Services				\$30,198.89
500 <u>Other Purchased Services</u>				
580 Travel				413.47
Total Other Purchased Services				\$413.47
600 <u>Supplies</u>				
610 General Supplies				6,414.16
Total Supplies				\$6,414.16
Total 2400 Support Services – Pupil Health				\$657,525.69

LEA : 111444602 Mifflin County SD

Printed 11/15/2019 11:22:40 AM

General Fund (10)

2440 Nursing Services

	<u>Elementary</u>	<u>Secondary</u>	<u>Federal</u>	<u>Total</u>
100 <u>Personnel Services – Salaries</u>				
100 Personnel Services – Salaries				383,845.09
Total Personnel Services – Salaries				\$383,845.09
200 <u>Personnel Services – Employee Benefits</u>				
210 Group Insurance – Contracted Provider				82,812.05
220 Social Security Contributions				28,905.87
230 PSERS Retirement Contributions				122,399.76
250 Unemployment Compensation				470.03
260 Workers' Compensation				2,066.37
Total Personnel Services – Employee Benefits				\$236,654.08
300 <u>Purchased Professional and Technical Services</u>				
329 Professional Educational Services – Other				20,392.32
330 Other Professional Services				8,696.57
390 Other Purchased Professional and Technical Services				1,110.00
Total Purchased Professional and Technical Services				\$30,198.89
500 <u>Other Purchased Services</u>				
580 Travel				413.47
Total Other Purchased Services				\$413.47
600 <u>Supplies</u>				
610 General Supplies				6,414.16
Total Supplies				\$6,414.16
Total 2440 Nursing Services				\$657,525.69

LEA : 111444602 Mifflin County SD

Printed 11/15/2019 11:22:40 AM

General Fund (10)				
2500 Support Services – Business	<u>Elementary</u>	<u>Secondary</u>	<u>Federal</u>	<u>Total</u>
100 <u>Personnel Services – Salaries</u>				
100 Personnel Services – Salaries				391,258.80
Total Personnel Services – Salaries				\$391,258.80
200 <u>Personnel Services – Employee Benefits</u>				
210 Group Insurance – Contracted Provider				104,108.92
220 Social Security Contributions				29,070.65
230 PSERS Retirement Contributions				129,669.94
250 Unemployment Compensation				479.32
260 Workers' Compensation				2,080.22
Total Personnel Services – Employee Benefits				\$265,409.05
300 <u>Purchased Professional and Technical Services</u>				
310 Official / Administrative Services				95,845.54
390 Other Purchased Professional and Technical Services				830.00
Total Purchased Professional and Technical Services				\$96,675.54
500 <u>Other Purchased Services</u>				
530 Communications				13,994.16
580 Travel				1,285.82
Total Other Purchased Services				\$15,279.98
600 <u>Supplies</u>				
610 General Supplies				(7,380.83)
Total Supplies				(\$7,380.83)
800 <u>Other Objects</u>				
810 Dues and Fees				2,417.20
Total Other Objects				\$2,417.20
Total 2500 Support Services – Business				\$763,659.74

LEA : 111444602 Mifflin County SD

Printed 11/15/2019 11:22:40 AM

General Fund (10)

2510 Fiscal Services

	<u>Elementary</u>	<u>Secondary</u>	<u>Federal</u>	<u>Total</u>
100 <u>Personnel Services – Salaries</u>				
100 Personnel Services – Salaries				391,258.80
Total Personnel Services – Salaries				\$391,258.80
200 <u>Personnel Services – Employee Benefits</u>				
210 Group Insurance – Contracted Provider				104,108.92
220 Social Security Contributions				29,070.65
230 PSERS Retirement Contributions				129,669.94
250 Unemployment Compensation				479.32
260 Workers' Compensation				2,080.22
Total Personnel Services – Employee Benefits				\$265,409.05
300 <u>Purchased Professional and Technical Services</u>				
310 Official / Administrative Services				95,845.54
390 Other Purchased Professional and Technical Services				830.00
Total Purchased Professional and Technical Services				\$96,675.54
500 <u>Other Purchased Services</u>				
530 Communications				13,994.16
580 Travel				1,285.82
Total Other Purchased Services				\$15,279.98
600 <u>Supplies</u>				
610 General Supplies				(7,380.83)
Total Supplies				(\$7,380.83)
800 <u>Other Objects</u>				
810 Dues and Fees				2,417.20
Total Other Objects				\$2,417.20
Total 2510 Fiscal Services				\$763,659.74

LEA : 111444602 Mifflin County SD

Printed 11/15/2019 11:22:40 AM

General Fund (10)

2511 Supervision of Fiscal Services - Head of Component	<u>Elementary</u>	<u>Secondary</u>	<u>Federal</u>	<u>Total</u>
100 <u>Personnel Services – Salaries</u>				
100 Personnel Services – Salaries				144,677.00
Total Personnel Services – Salaries				\$144,677.00
200 <u>Personnel Services – Employee Benefits</u>				
210 Group Insurance – Contracted Provider				33,476.92
220 Social Security Contributions				10,900.29
230 PSERS Retirement Contributions				48,365.46
250 Unemployment Compensation				177.18
260 Workers' Compensation				771.45
Total Personnel Services – Employee Benefits				\$93,691.30
300 <u>Purchased Professional and Technical Services</u>				
390 Other Purchased Professional and Technical Services				210.00
Total Purchased Professional and Technical Services				\$210.00
500 <u>Other Purchased Services</u>				
580 Travel				236.64
Total Other Purchased Services				\$236.64
800 <u>Other Objects</u>				
810 Dues and Fees				350.00
Total Other Objects				\$350.00
Total 2511 Supervision of Fiscal Services - Head of Component				\$239,164.94

LEA : 111444602 Mifflin County SD

Printed 11/15/2019 11:22:40 AM

General Fund (10)

2514 Payroll Services

	<u>Elementary</u>	<u>Secondary</u>	<u>Federal</u>	<u>Total</u>
100 <u>Personnel Services – Salaries</u>				
100 Personnel Services – Salaries				94,677.00
Total Personnel Services – Salaries				\$94,677.00
200 <u>Personnel Services – Employee Benefits</u>				
210 Group Insurance – Contracted Provider				43,322.31
220 Social Security Contributions				6,820.01
230 PSERS Retirement Contributions				31,650.52
250 Unemployment Compensation				116.05
260 Workers' Compensation				502.47
Total Personnel Services – Employee Benefits				\$82,411.36
500 <u>Other Purchased Services</u>				
580 Travel				50.06
Total Other Purchased Services				\$50.06
Total 2514 Payroll Services				\$177,138.42

LEA : 111444602 Mifflin County SD

Printed 11/15/2019 11:22:40 AM

General Fund (10)

2515 Financial Accounting Services	<u>Elementary</u>	<u>Secondary</u>	<u>Federal</u>	<u>Total</u>
100 <u>Personnel Services – Salaries</u>				
100 Personnel Services – Salaries				53,741.60
Total Personnel Services – Salaries				\$53,741.60
200 <u>Personnel Services – Employee Benefits</u>				
210 Group Insurance – Contracted Provider				26,665.17
220 Social Security Contributions				3,819.93
230 PSERS Retirement Contributions				17,965.67
250 Unemployment Compensation				65.91
260 Workers' Compensation				289.58
Total Personnel Services – Employee Benefits				\$48,806.26
300 <u>Purchased Professional and Technical Services</u>				
310 Official / Administrative Services				91,261.23
Total Purchased Professional and Technical Services				\$91,261.23
500 <u>Other Purchased Services</u>				
530 Communications				13,994.16
580 Travel				464.36
Total Other Purchased Services				\$14,458.52
600 <u>Supplies</u>				
610 General Supplies				(7,650.94)
Total Supplies				(\$7,650.94)
800 <u>Other Objects</u>				
810 Dues and Fees				1,294.20
Total Other Objects				\$1,294.20
Total 2515 Financial Accounting Services				\$201,910.87

LEA : 111444602 Mifflin County SD

Printed 11/15/2019 11:22:40 AM

General Fund (10)				
2519 Other Fiscal Services	<u>Elementary</u>	<u>Secondary</u>	<u>Federal</u>	<u>Total</u>
100 <u>Personnel Services – Salaries</u>				
100 Personnel Services – Salaries				98,163.20
Total Personnel Services – Salaries				\$98,163.20
200 <u>Personnel Services – Employee Benefits</u>				
210 Group Insurance – Contracted Provider				644.52
220 Social Security Contributions				7,530.42
230 PSERS Retirement Contributions				31,688.29
250 Unemployment Compensation				120.18
260 Workers' Compensation				516.72
Total Personnel Services – Employee Benefits				\$40,500.13
300 <u>Purchased Professional and Technical Services</u>				
310 Official / Administrative Services				4,584.31
390 Other Purchased Professional and Technical Services				620.00
Total Purchased Professional and Technical Services				\$5,204.31
500 <u>Other Purchased Services</u>				
580 Travel				534.76
Total Other Purchased Services				\$534.76
600 <u>Supplies</u>				
610 General Supplies				270.11
Total Supplies				\$270.11
800 <u>Other Objects</u>				
810 Dues and Fees				773.00
Total Other Objects				\$773.00
Total 2519 Other Fiscal Services				\$145,445.51

LEA : 111444602 Mifflin County SD

Printed 11/15/2019 11:22:40 AM

General Fund (10)				
2600 Operation and Maintenance of Plant Services	<u>Elementary</u>	<u>Secondary</u>	<u>Federal</u>	<u>Total</u>
100 <u>Personnel Services – Salaries</u>				
100 Personnel Services – Salaries				1,878,145.88
Total Personnel Services – Salaries				\$1,878,145.88
200 <u>Personnel Services – Employee Benefits</u>				
210 Group Insurance – Contracted Provider				717,133.39
220 Social Security Contributions				141,249.83
230 PSERS Retirement Contributions				623,668.23
250 Unemployment Compensation				2,284.46
260 Workers' Compensation				10,118.70
291 Other Retirement Plans				1,342.76
Total Personnel Services – Employee Benefits				\$1,495,797.37
300 <u>Purchased Professional and Technical Services</u>				
330 Other Professional Services				5,170.00
350 Security / Safety Services				81,804.94
Total Purchased Professional and Technical Services				\$86,974.94
400 <u>Purchased Property Services</u>				
410 Cleaning Services				87,809.65
420 Utility Services				880,584.29
430 Repairs and Maintenance Services				661,460.37
440 Rentals				4,202.02
Total Purchased Property Services				\$1,634,056.33
500 <u>Other Purchased Services</u>				
523 General Property and Liability Insurance				203,345.46
529 Other Insurance				33,681.54
580 Travel				31.26
Total Other Purchased Services				\$237,058.26
600 <u>Supplies</u>				
610 General Supplies	128,161.48	109,372.26		237,533.74
620 Energy				227,483.46
Total Supplies	\$128,161.48	\$109,372.26		\$465,017.20
700 <u>Property</u>				
752 Capital Equipment – Original and Additional				43,186.59
Total Property				\$43,186.59
800 <u>Other Objects</u>				
810 Dues and Fees				472.99
Total Other Objects				\$472.99
Total 2600 Operation and Maintenance of Plant Services	\$128,161.48	\$109,372.26		\$5,840,709.56

LEA : 111444602 Mifflin County SD

Printed 11/15/2019 11:22:40 AM

General Fund (10)

2610 Supervision of Operation and Maintenance of Plant Services	<u>Elementary</u>	<u>Secondary</u>	<u>Federal</u>	<u>Total</u>
100 <u>Personnel Services – Salaries</u>				
100 Personnel Services – Salaries				160,253.75
Total Personnel Services – Salaries				\$160,253.75
200 <u>Personnel Services – Employee Benefits</u>				
210 Group Insurance – Contracted Provider				57,440.09
220 Social Security Contributions				12,142.64
230 PSERS Retirement Contributions				53,572.84
250 Unemployment Compensation				196.40
260 Workers' Compensation				854.09
Total Personnel Services – Employee Benefits				\$124,206.06
Total 2610 Supervision of Operation and Maintenance of Plant Services				\$284,459.81

LEA : 111444602 Mifflin County SD

Printed 11/15/2019 11:22:40 AM

General Fund (10)

2611 Supervision of Operation and Maintenance of Plant Services – Head of Component	<u>Elementary</u>	<u>Secondary</u>	<u>Federal</u>	<u>Total</u>
100 <u>Personnel Services – Salaries</u>				
100 Personnel Services – Salaries				160,253.75
Total Personnel Services – Salaries				\$160,253.75
200 <u>Personnel Services – Employee Benefits</u>				
210 Group Insurance – Contracted Provider				57,440.09
220 Social Security Contributions				12,142.64
230 PSERS Retirement Contributions				53,572.84
250 Unemployment Compensation				196.40
260 Workers' Compensation				854.09
Total Personnel Services – Employee Benefits				\$124,206.06
Total 2611 Supervision of Operation and Maintenance of Plant Services – Head of Component				\$284,459.81

LEA : 111444602 Mifflin County SD

Printed 11/15/2019 11:22:40 AM

General Fund (10)				
2620 Operation of Buildings Services	<u>Elementary</u>	<u>Secondary</u>	<u>Federal</u>	<u>Total</u>
100 <u>Personnel Services – Salaries</u>				
100 Personnel Services – Salaries				1,708,674.63
Total Personnel Services – Salaries				\$1,708,674.63
200 <u>Personnel Services – Employee Benefits</u>				
210 Group Insurance – Contracted Provider				659,693.30
220 Social Security Contributions				128,407.95
230 PSERS Retirement Contributions				567,679.58
250 Unemployment Compensation				2,076.70
260 Workers' Compensation				9,218.22
291 Other Retirement Plans				1,342.76
Total Personnel Services – Employee Benefits				\$1,368,418.51
300 <u>Purchased Professional and Technical Services</u>				
330 Other Professional Services				5,170.00
Total Purchased Professional and Technical Services				\$5,170.00
400 <u>Purchased Property Services</u>				
410 Cleaning Services				87,809.65
420 Utility Services				880,584.29
430 Repairs and Maintenance Services				661,460.37
440 Rentals				4,202.02
Total Purchased Property Services				\$1,634,056.33
500 <u>Other Purchased Services</u>				
523 General Property and Liability Insurance				203,345.46
529 Other Insurance				33,681.54
580 Travel				31.26
Total Other Purchased Services				\$237,058.26
600 <u>Supplies</u>				
610 General Supplies	128,161.48	109,372.26		237,533.74
620 Energy				227,483.46
Total Supplies	\$128,161.48	\$109,372.26		\$465,017.20
700 <u>Property</u>				
752 Capital Equipment – Original and Additional				43,186.59
Total Property				\$43,186.59
800 <u>Other Objects</u>				
810 Dues and Fees				472.99
Total Other Objects				\$472.99
Total 2620 Operation of Buildings Services	\$128,161.48	\$109,372.26		\$5,462,054.51

LEA : 111444602 Mifflin County SD

Printed 11/15/2019 11:22:40 AM

General Fund (10)

2660 Safety and Security Services	<u>Elementary</u>	<u>Secondary</u>	<u>Federal</u>	<u>Total</u>
100 <u>Personnel Services – Salaries</u>				
100 Personnel Services – Salaries				9,217.50
Total Personnel Services – Salaries				\$9,217.50
200 <u>Personnel Services – Employee Benefits</u>				
220 Social Security Contributions				699.24
230 PSERS Retirement Contributions				2,415.81
250 Unemployment Compensation				11.36
260 Workers' Compensation				46.39
Total Personnel Services – Employee Benefits				\$3,172.80
300 <u>Purchased Professional and Technical Services</u>				
350 Security / Safety Services				81,804.94
Total Purchased Professional and Technical Services				\$81,804.94
Total 2660 Safety and Security Services				\$94,195.24

LEA : 111444602 Mifflin County SD

Printed 11/15/2019 11:22:40 AM

General Fund (10)				
2700 Student Transportation Services	<u>Elementary</u>	<u>Secondary</u>	<u>Federal</u>	<u>Total</u>
100 <u>Personnel Services – Salaries</u>				
100 Personnel Services – Salaries				72,918.53
Total Personnel Services – Salaries				\$72,918.53
200 <u>Personnel Services – Employee Benefits</u>				
210 Group Insurance – Contracted Provider				1,137.56
220 Social Security Contributions				5,598.03
230 PSERS Retirement Contributions				23,249.10
250 Unemployment Compensation				89.33
260 Workers' Compensation				386.49
Total Personnel Services – Employee Benefits				\$30,460.51
300 <u>Purchased Professional and Technical Services</u>				
390 Other Purchased Professional and Technical Services				3,311.25
Total Purchased Professional and Technical Services				\$3,311.25
500 <u>Other Purchased Services</u>				
513 Contracted Carriers			13,260.79	4,695,760.01
516 Student Transportation Services From the IU				94,187.12
519 Student Transportation Services From Other Sources				737.05
530 Communications				2.50
Total Other Purchased Services			\$13,260.79	\$4,790,686.68
600 <u>Supplies</u>				
610 General Supplies				10.00
620 Energy				2,036.38
Total Supplies				\$2,046.38
Total 2700 Student Transportation Services			\$13,260.79	\$4,899,423.35

LEA : 111444602 Mifflin County SD

Printed 11/15/2019 11:22:40 AM

General Fund (10)

2720 Vehicle Operation Services

	<u>Elementary</u>	<u>Secondary</u>	<u>Federal</u>	<u>Total</u>
100 <u>Personnel Services – Salaries</u>				
100 Personnel Services – Salaries				72,918.53
Total Personnel Services – Salaries				\$72,918.53
200 <u>Personnel Services – Employee Benefits</u>				
210 Group Insurance – Contracted Provider				1,137.56
220 Social Security Contributions				5,598.03
230 PSERS Retirement Contributions				23,249.10
250 Unemployment Compensation				89.33
260 Workers' Compensation				386.49
Total Personnel Services – Employee Benefits				\$30,460.51
300 <u>Purchased Professional and Technical Services</u>				
390 Other Purchased Professional and Technical Services				3,311.25
Total Purchased Professional and Technical Services				\$3,311.25
500 <u>Other Purchased Services</u>				
513 Contracted Carriers			13,260.79	3,916,468.89
516 Student Transportation Services From the IU				94,187.12
519 Student Transportation Services From Other Sources				737.05
530 Communications				2.50
Total Other Purchased Services			\$13,260.79	\$4,011,395.56
600 <u>Supplies</u>				
610 General Supplies				10.00
620 Energy				2,036.38
Total Supplies				\$2,046.38
Total 2720 Vehicle Operation Services			\$13,260.79	\$4,120,132.23

LEA : 111444602 Mifflin County SD

Printed 11/15/2019 11:22:40 AM

General Fund (10)

2750 Nonpublic Transportation	<u>Elementary</u>	<u>Secondary</u>	<u>Federal</u>	<u>Total</u>
500 <u>Other Purchased Services</u>				
513 Contracted Carriers				779,291.12
Total Other Purchased Services				\$779,291.12
Total 2750 Nonpublic Transportation				\$779,291.12

LEA : 111444602 Mifflin County SD

Printed 11/15/2019 11:22:40 AM

General Fund (10)					
2800 Support Services – Central		Elementary	Secondary	Federal	Total
100 <u>Personnel Services – Salaries</u>					
100 Personnel Services – Salaries				77,420.18	627,318.86
Total Personnel Services – Salaries				\$77,420.18	\$627,318.86
200 <u>Personnel Services – Employee Benefits</u>					
210 Group Insurance – Contracted Provider				15,783.03	161,599.47
220 Social Security Contributions				5,709.81	47,443.28
230 PSERS Retirement Contributions				12,940.73	196,020.12
240 Tuition Reimbursement					36,158.00
250 Unemployment Compensation				154.91	828.31
260 Workers' Compensation				263.07	3,173.50
Total Personnel Services – Employee Benefits				\$34,851.55	\$445,222.68
300 <u>Purchased Professional and Technical Services</u>					
340 Technical Services					125,295.10
Total Purchased Professional and Technical Services					\$125,295.10
400 <u>Purchased Property Services</u>					
430 Repairs and Maintenance Services					5,004.98
Total Purchased Property Services					\$5,004.98
500 <u>Other Purchased Services</u>					
580 Travel				1,305.71	15,261.09
Total Other Purchased Services				\$1,305.71	\$15,261.09
600 <u>Supplies</u>					
610 General Supplies				427.24	52,844.04
640 Books and Periodicals					64,154.24
Total Supplies				\$427.24	\$116,998.28
700 <u>Property</u>					
768 Capitalized Technology Software - Replacement					12,097.69
Total Property					\$12,097.69
800 <u>Other Objects</u>					
810 Dues and Fees					1,691.38
Total Other Objects					\$1,691.38
Total 2800 Support Services – Central				\$114,004.68	\$1,348,890.06

LEA : 111444602 Mifflin County SD

Printed 11/15/2019 11:22:40 AM

General Fund (10)				
2810 Planning, Research, Development and Evaluation Services	<u>Elementary</u>	<u>Secondary</u>	<u>Federal</u>	<u>Total</u>
100 <u>Personnel Services – Salaries</u>				
100 Personnel Services – Salaries				549,898.68
Total Personnel Services – Salaries				\$549,898.68
200 <u>Personnel Services – Employee Benefits</u>				
210 Group Insurance – Contracted Provider				145,816.44
220 Social Security Contributions				41,733.47
230 PSERS Retirement Contributions				183,079.39
250 Unemployment Compensation				673.40
260 Workers' Compensation				2,910.43
Total Personnel Services – Employee Benefits				\$374,213.13
300 <u>Purchased Professional and Technical Services</u>				
340 Technical Services				125,295.10
Total Purchased Professional and Technical Services				\$125,295.10
400 <u>Purchased Property Services</u>				
430 Repairs and Maintenance Services				5,004.98
Total Purchased Property Services				\$5,004.98
500 <u>Other Purchased Services</u>				
580 Travel				13,955.38
Total Other Purchased Services				\$13,955.38
600 <u>Supplies</u>				
610 General Supplies				52,416.80
640 Books and Periodicals				64,154.24
Total Supplies				\$116,571.04
700 <u>Property</u>				
768 Capitalized Technology Software - Replacement				12,097.69
Total Property				\$12,097.69
800 <u>Other Objects</u>				
810 Dues and Fees				1,691.38
Total Other Objects				\$1,691.38
Total 2810 Planning, Research, Development and Evaluation Services				\$1,198,727.38

LEA : 111444602 Mifflin County SD

Printed 11/15/2019 11:22:40 AM

General Fund (10)

2830 Staff Services

<u>Elementary</u>	<u>Secondary</u>	<u>Federal</u>	<u>Total</u>
-------------------	------------------	----------------	--------------

200 Personnel Services – Employee Benefits

240 Tuition Reimbursement			36,158.00
---------------------------	--	--	-----------

Total Personnel Services – Employee Benefits			\$36,158.00
---	--	--	--------------------

Total 2830 Staff Services			\$36,158.00
----------------------------------	--	--	--------------------

LEA : 111444602 Mifflin County SD

Printed 11/15/2019 11:22:40 AM

General Fund (10)

2834 Staff Development Services – Non-Instructional, Certified Staff Only	<u>Elementary</u>	<u>Secondary</u>	<u>Federal</u>	<u>Total</u>
200 <u>Personnel Services – Employee Benefits</u>				
240 Tuition Reimbursement				36,158.00
Total Personnel Services – Employee Benefits				\$36,158.00
Total 2834 Staff Development Services – Non-Instructional, Certified Staff Only				\$36,158.00

LEA : 111444602 Mifflin County SD

Printed 11/15/2019 11:22:40 AM

General Fund (10)

2850 State and Federal Agency Liaison Services	<u>Elementary</u>	<u>Secondary</u>	<u>Federal</u>	<u>Total</u>
100 <u>Personnel Services – Salaries</u>				
100 Personnel Services – Salaries			77,420.18	77,420.18
Total Personnel Services – Salaries			\$77,420.18	\$77,420.18
200 <u>Personnel Services – Employee Benefits</u>				
210 Group Insurance – Contracted Provider			15,783.03	15,783.03
220 Social Security Contributions			5,709.81	5,709.81
230 PSERS Retirement Contributions			12,940.73	12,940.73
250 Unemployment Compensation			154.91	154.91
260 Workers' Compensation			263.07	263.07
Total Personnel Services – Employee Benefits			\$34,851.55	\$34,851.55
500 <u>Other Purchased Services</u>				
580 Travel			1,305.71	1,305.71
Total Other Purchased Services			\$1,305.71	\$1,305.71
600 <u>Supplies</u>				
610 General Supplies			427.24	427.24
Total Supplies			\$427.24	\$427.24
Total 2850 State and Federal Agency Liaison Services			\$114,004.68	\$114,004.68

LEA : 111444602 Mifflin County SD

Printed 11/15/2019 11:22:46 AM

General Fund (10)

3000 Operation of Non-Instructional Services		<u>Total</u>
100 <u>Personnel Services – Salaries</u>		
100 Personnel Services – Salaries		450,762.15
Total Personnel Services – Salaries		\$450,762.15
200 <u>Personnel Services – Employee Benefits</u>		
210 Group Insurance – Contracted Provider		24,376.65
220 Social Security Contributions		33,977.53
230 PSERS Retirement Contributions		147,295.76
250 Unemployment Compensation		751.61
260 Workers' Compensation		1,866.75
Total Personnel Services – Employee Benefits		\$208,268.30
300 <u>Purchased Professional and Technical Services</u>		
390 Other Purchased Professional and Technical Services		129,975.98
Total Purchased Professional and Technical Services		\$129,975.98
500 <u>Other Purchased Services</u>		
510 Student Transportation Services		159,354.36
580 Travel		10,229.65
591 Services Purchased Locally		22,103.22
Total Other Purchased Services		\$191,687.23
600 <u>Supplies</u>		
610 General Supplies		123,287.01
Total Supplies		\$123,287.01
800 <u>Other Objects</u>		
810 Dues and Fees		22,397.38
860 Grants To Municipal and Community Service Organizations		1,609.83
Total Other Objects		\$24,007.21
Total 3000 Operation of Non-Instructional Services		\$1,127,987.88

LEA : 111444602 Mifflin County SD

Printed 11/15/2019 11:22:46 AM

General Fund (10)

3200 Student Activities

	<u>Elementary</u>	<u>Secondary</u>	<u>Federal</u>	<u>Total</u>
100 <u>Personnel Services – Salaries</u>				
100 Personnel Services – Salaries				439,580.23
Total Personnel Services – Salaries				\$439,580.23
200 <u>Personnel Services – Employee Benefits</u>				
210 Group Insurance – Contracted Provider				24,376.65
220 Social Security Contributions				33,137.32
230 PSERS Retirement Contributions				145,433.18
250 Unemployment Compensation				732.79
260 Workers' Compensation				1,828.72
Total Personnel Services – Employee Benefits				\$205,508.66
300 <u>Purchased Professional and Technical Services</u>				
390 Other Purchased Professional and Technical Services				129,975.98
Total Purchased Professional and Technical Services				\$129,975.98
500 <u>Other Purchased Services</u>				
510 Student Transportation Services				159,354.36
580 Travel				10,229.65
591 Services Purchased Locally				22,103.22
Total Other Purchased Services				\$191,687.23
600 <u>Supplies</u>				
610 General Supplies				108,734.38
Total Supplies				\$108,734.38
800 <u>Other Objects</u>				
810 Dues and Fees				22,397.38
Total Other Objects				\$22,397.38
Total 3200 Student Activities				\$1,097,883.86

LEA : 111444602 Mifflin County SD

Printed 11/15/2019 11:22:46 AM

General Fund (10)

3300 Community Services

100 Personnel Services – Salaries

100 Personnel Services – Salaries			11,181.92	11,181.92
-----------------------------------	--	--	-----------	-----------

Total Personnel Services – Salaries

\$11,181.92 \$11,181.92

200 Personnel Services – Employee Benefits

220 Social Security Contributions			840.21	840.21
-----------------------------------	--	--	--------	--------

230 PSERS Retirement Contributions			1,862.58	1,862.58
------------------------------------	--	--	----------	----------

250 Unemployment Compensation			18.82	18.82
-------------------------------	--	--	-------	-------

260 Workers' Compensation			38.03	38.03
---------------------------	--	--	-------	-------

Total Personnel Services – Employee Benefits

\$2,759.64 \$2,759.64

600 Supplies

610 General Supplies			13,181.54	14,552.63
----------------------	--	--	-----------	-----------

Total Supplies

\$13,181.54 \$14,552.63

800 Other Objects

860 Grants To Municipal and Community Service Organizations				1,609.83
---	--	--	--	----------

Total Other Objects

\$1,609.83

Total 3300 Community Services

\$27,123.10 \$30,104.02

LEA : 111444602 Mifflin County SD

Printed 11/15/2019 11:22:52 AM

General Fund (10)		
5000 Other Expenditures and Financing Uses		<u>Total</u>
800 <u>Other Objects</u>		
830 Interest	3,251,390.80	
880 Refunds of Prior Years' Receipts	1,889.74	
Total Other Objects	\$3,253,280.54	
900 <u>Other Uses of Funds</u>		
910 Redemption of Principal	4,484,131.66	
939 Other Fund Transfers	1,270,000.00	
Total Other Uses of Funds	\$5,754,131.66	
Total 5000 Other Expenditures and Financing Uses	\$9,007,412.20	

LEA : 111444602 Mifflin County SD

Printed 11/15/2019 11:22:52 AM

General Fund (10)

5100 Debt Service / Other Expenditures and Financing Uses	<u>Elementary</u>	<u>Secondary</u>	<u>Federal</u>	<u>Total</u>
800 <u>Other Objects</u>				
830 Interest				3,251,390.80
880 Refunds of Prior Years' Receipts				1,889.74
Total Other Objects				\$3,253,280.54
900 <u>Other Uses of Funds</u>				
910 Redemption of Principal				4,484,131.66
Total Other Uses of Funds				\$4,484,131.66
Total 5100 Debt Service / Other Expenditures and Financing Uses				\$7,737,412.20

LEA : 111444602 Mifflin County SD

Printed 11/15/2019 11:22:52 AM

General Fund (10)				
5110 Debt Service	<u>Elementary</u>	<u>Secondary</u>	<u>Federal</u>	<u>Total</u>
800 <u>Other Objects</u>				
830 Interest				3,251,390.80
Total Other Objects				\$3,251,390.80
900 <u>Other Uses of Funds</u>				
910 Redemption of Principal				4,484,131.66
Total Other Uses of Funds				\$4,484,131.66
Total 5110 Debt Service				\$7,735,522.46

LEA : 111444602 Mifflin County SD

Printed 11/15/2019 11:22:52 AM

General Fund (10)

5130 Refund of Prior Year Revenues / Receipts	<u>Elementary</u>	<u>Secondary</u>	<u>Federal</u>	<u>Total</u>
800 <u>Other Objects</u>				
880 Refunds of Prior Years' Receipts				1,889.74
Total Other Objects				\$1,889.74
Total 5130 Refund of Prior Year Revenues / Receipts				\$1,889.74

LEA : 111444602 Mifflin County SD

Printed 11/15/2019 11:22:52 AM

General Fund (10)

5200 Interfund Transfers – Out	<u>Elementary</u>	<u>Secondary</u>	<u>Federal</u>	<u>Total</u>
900 <u>Other Uses of Funds</u>				
939 Other Fund Transfers				1,270,000.00
Total Other Uses of Funds				\$1,270,000.00
Total 5200 Interfund Transfers – Out				\$1,270,000.00

LEA : 111444602 Mifflin County SD

Printed 11/15/2019 11:22:52 AM

General Fund (10)

5230 Capital Projects Fund Transfers	<u>Elementary</u>	<u>Secondary</u>	<u>Federal</u>	<u>Total</u>
900 <u>Other Uses of Funds</u>				
939 Other Fund Transfers				1,200,000.00
Total Other Uses of Funds				\$1,200,000.00
Total 5230 Capital Projects Fund Transfers				\$1,200,000.00

LEA : 111444602 Mifflin County SD

Printed 11/15/2019 11:22:52 AM

General Fund (10)

5280 Activity Fund Transfers	<u>Elementary</u>	<u>Secondary</u>	<u>Federal</u>	<u>Total</u>
900 <u>Other Uses of Funds</u>				
939 Other Fund Transfers				70,000.00
Total Other Uses of Funds				\$70,000.00
Total 5280 Activity Fund Transfers				\$70,000.00

LEA : 111444602 Mifflin County SD

Printed 11/15/2019 11:22:33 AM

Other Capital Projects Fund (39)

		<u>Total</u>
1000 Instruction		
700 Property		
752 Capital Equipment – Original and Additional		10,405.00
Total Property		\$10,405.00
Total 1000 Instruction		\$10,405.00

LEA : 111444602 Mifflin County SD

Printed 11/15/2019 11:22:33 AM

Other Capital Projects Fund (39)

1100 Regular Programs – Elementary / Secondary	<u>Elementary</u>	<u>Secondary</u>	<u>Federal</u>	<u>Total</u>
700 <u>Property</u>				
752 Capital Equipment – Original and Additional	10,405.00			10,405.00
Total Property	\$10,405.00			\$10,405.00
Total 1100 Regular Programs – Elementary / Secondary	\$10,405.00			\$10,405.00

LEA : 111444602 Mifflin County SD

Printed 11/15/2019 11:22:33 AM

Other Capital Projects Fund (39)

1110 Regular Programs

	<u>Elementary</u>	<u>Secondary</u>	<u>Federal</u>	<u>Total</u>
700 <u>Property</u>				
752 Capital Equipment – Original and Additional	10,405.00			10,405.00
Total Property	\$10,405.00			\$10,405.00
Total 1110 Regular Programs	\$10,405.00			\$10,405.00

LEA : 111444602 Mifflin County SD

Printed 11/15/2019 11:22:42 AM

Other Capital Projects Fund (39)

2000 Support Services

Total

700 Property	
762 Capitalized Equipment - Replacement	172,970.00
766 Capitalized Technology Equipment – Replacement	1,344,928.00
Total Property	\$1,517,898.00
Total 2000 Support Services	\$1,517,898.00

LEA : 111444602 Mifflin County SD

Printed 11/15/2019 11:22:42 AM

Other Capital Projects Fund (39)

2600 Operation and Maintenance of Plant Services	<u>Elementary</u>	<u>Secondary</u>	<u>Federal</u>	<u>Total</u>
700 <u>Property</u>				
762 Capitalized Equipment - Replacement				172,970.00
Total Property				\$172,970.00
Total 2600 Operation and Maintenance of Plant Services				\$172,970.00

LEA : 111444602 Mifflin County SD

Printed 11/15/2019 11:22:42 AM

Other Capital Projects Fund (39)

2620 Operation of Buildings Services	<u>Elementary</u>	<u>Secondary</u>	<u>Federal</u>	<u>Total</u>
700 <u>Property</u>				
762 Capitalized Equipment - Replacement				172,970.00
Total Property				\$172,970.00
Total 2620 Operation of Buildings Services				\$172,970.00

LEA : 111444602 Mifflin County SD

Printed 11/15/2019 11:22:42 AM

Other Capital Projects Fund (39)

2800 Support Services – Central

<u>Elementary</u>	<u>Secondary</u>	<u>Federal</u>	<u>Total</u>
-------------------	------------------	----------------	--------------

700 Property

766 Capitalized Technology Equipment – Replacement			1,344,928.00
--	--	--	--------------

Total Property			\$1,344,928.00
-----------------------	--	--	-----------------------

Total 2800 Support Services – Central			\$1,344,928.00
--	--	--	-----------------------

LEA : 111444602 Mifflin County SD

Printed 11/15/2019 11:22:42 AM

Other Capital Projects Fund (39)

2810 Planning, Research, Development and Evaluation Services

Elementary

Secondary

Federal

Total

700 Property

766 Capitalized Technology Equipment – Replacement

1,344,928.00

Total Property

\$1,344,928.00

Total 2810 Planning, Research, Development and Evaluation Services

\$1,344,928.00

LEA : 111444602 Mifflin County SD

Printed 11/15/2019 11:22:49 AM

Other Capital Projects Fund (39)

4000 Facilities Acquisition, Construction and Improvement Services

Total

400 Purchased Property Services

450 Construction Services	10,431,508.00
---------------------------	---------------

Total Purchased Property Services	\$10,431,508.00
-----------------------------------	-----------------

Total 4000 Facilities Acquisition, Construction and Improvement Services	\$10,431,508.00
--	-----------------

LEA : 111444602 Mifflin County SD

Printed 11/15/2019 11:22:49 AM

Other Capital Projects Fund (39)

4200 Existing Site Improvement Services	<u>Elementary</u>	<u>Secondary</u>	<u>Federal</u>	<u>Total</u>
400 <u>Purchased Property Services</u>				
450 Construction Services				20,625.00
Total Purchased Property Services				\$20,625.00
Total 4200 Existing Site Improvement Services				\$20,625.00

LEA : 111444602 Mifflin County SD

Printed 11/15/2019 11:22:49 AM

Other Capital Projects Fund (39)

4600 Existing Building Improvement Services	<u>Elementary</u>	<u>Secondary</u>	<u>Federal</u>	<u>Total</u>
400 <u>Purchased Property Services</u>				
450 Construction Services				10,410,883.00
Total Purchased Property Services				\$10,410,883.00
Total 4600 Existing Building Improvement Services				\$10,410,883.00

LEA : 111444602 Mifflin County SD

Printed 11/15/2019 11:22:44 AM

Debt Service Fund (40)

2000 Support Services

	<u>Total</u>
700 <u>Property</u>	
790 Other Property	99,828.94
Total Property	\$99,828.94
800 <u>Other Objects</u>	
810 Dues and Fees	125,414.96
Total Other Objects	\$125,414.96
Total 2000 Support Services	\$225,243.90

LEA : 111444602 Mifflin County SD

Printed 11/15/2019 11:22:44 AM

Debt Service Fund (40)

2300 Support Services – Administration	<u>Elementary</u>	<u>Secondary</u>	<u>Federal</u>	<u>Total</u>
700 <u>Property</u>				
790 Other Property				99,828.94
Total Property				\$99,828.94
800 <u>Other Objects</u>				
810 Dues and Fees				125,414.96
Total Other Objects				\$125,414.96
Total 2300 Support Services – Administration				\$225,243.90

LEA : 111444602 Mifflin County SD

Printed 11/15/2019 11:22:44 AM

Debt Service Fund (40)

2390 Other Administration Services	<u>Elementary</u>	<u>Secondary</u>	<u>Federal</u>	<u>Total</u>
700 <u>Property</u>				
790 Other Property				99,828.94
Total Property				\$99,828.94
800 <u>Other Objects</u>				
810 Dues and Fees				125,414.96
Total Other Objects				\$125,414.96
Total 2390 Other Administration Services				\$225,243.90

LEA : 111444602 Mifflin County SD

Printed 11/15/2019 11:22:53 AM

Debt Service Fund (40)

5000 Other Expenditures and Financing Uses

Total

800 Other Objects

830 Interest	27,966.46
--------------	-----------

Total Other Objects

\$27,966.46

900 Other Uses of Funds

910 Redemption of Principal	8,100,000.00
-----------------------------	--------------

939 Other Fund Transfers	8,538,186.84
--------------------------	--------------

990 Miscellaneous Other Uses of Funds	37,051.40
---------------------------------------	-----------

Total Other Uses of Funds

\$16,675,238.24

Total 5000 Other Expenditures and Financing Uses

\$16,703,204.70

LEA : 111444602 Mifflin County SD

Printed 11/15/2019 11:22:53 AM

Debt Service Fund (40)

5100 Debt Service / Other Expenditures and Financing Uses

<u>Elementary</u>	<u>Secondary</u>	<u>Federal</u>	<u>Total</u>
-------------------	------------------	----------------	--------------

800 Other Objects

830 Interest			27,966.46
--------------	--	--	-----------

Total Other Objects

\$27,966.46

900 Other Uses of Funds

910 Redemption of Principal			8,100,000.00
-----------------------------	--	--	--------------

990 Miscellaneous Other Uses of Funds			37,051.40
---------------------------------------	--	--	-----------

Total Other Uses of Funds

\$8,137,051.40

Total 5100 Debt Service / Other Expenditures and Financing Uses

\$8,165,017.86

LEA : 111444602 Mifflin County SD

Printed 11/15/2019 11:22:53 AM

Debt Service Fund (40)

5120 Debt Service – Refunded Bonds	<u>Elementary</u>	<u>Secondary</u>	<u>Federal</u>	<u>Total</u>
800 <u>Other Objects</u>				
830 Interest				27,966.46
Total Other Objects				\$27,966.46
900 <u>Other Uses of Funds</u>				
910 Redemption of Principal				8,100,000.00
Total Other Uses of Funds				\$8,100,000.00
Total 5120 Debt Service – Refunded Bonds				\$8,127,966.46

LEA : 111444602 Mifflin County SD

Printed 11/15/2019 11:22:53 AM

Debt Service Fund (40)

5150 Bond Discounts	<u>Elementary</u>	<u>Secondary</u>	<u>Federal</u>	<u>Total</u>
900 <u>Other Uses of Funds</u>				
990 Miscellaneous Other Uses of Funds				37,051.40
Total Other Uses of Funds				\$37,051.40
Total 5150 Bond Discounts				\$37,051.40

LEA : 111444602 Mifflin County SD

Printed 11/15/2019 11:22:53 AM

Debt Service Fund (40)

5200 Interfund Transfers – Out	<u>Elementary</u>	<u>Secondary</u>	<u>Federal</u>	<u>Total</u>
900 <u>Other Uses of Funds</u>				
939 Other Fund Transfers				8,538,186.84
Total Other Uses of Funds				\$8,538,186.84
Total 5200 Interfund Transfers – Out				\$8,538,186.84

Page 116

LEA : 111444602 Mifflin County SD

Printed 11/15/2019 11:23:08 AM

	<u>General Fund(10)</u>	<u>Public Purpose Trust(27)</u>	<u>Other Compt Approved</u> <u>(28)</u>	<u>Athletic / Activity(29)</u>	<u>Capital Reserve (690.</u> <u>1850)(31)</u>
1000 Instruction					
1100 Regular Programs - Elementary / Secondary	28,679,633.25				
1200 Special Programs - Elementary / Secondary	11,260,880.24				
1300 Vocational Education	3,447,192.45				
1400 Other Instructional Programs - Elementary / Secondary	1,011,718.41				
1500 Nonpublic School Programs	88,496.13				
Total Instruction	\$44,487,920.48				
2000 Support Services					
2100 Support Services - Students	1,760,071.87				
2200 Support Services - Instructional Staff	1,647,621.14				
2300 Support Services - Administration	4,329,709.72				
2400 Support Services - Pupil Health	657,525.69				
2500 Support Services - Business	763,659.74				
2600 Operation and Maintenance of Plant Services	5,840,709.56				
2700 Student Transportation Services	4,899,423.35				
2800 Support Services - Central	1,348,890.06				
Total Support Services	\$21,247,611.13				
3000 Operation of Non-Instructional Services					
3200 Student Activities	1,097,883.86				
3300 Community Services	30,104.02				
Total Operation of Non-Instructional Services	\$1,127,987.88				
4000 Facilities Acquisition, Construction and Improvement Services					
4200 Existing Site Improvement Services					
4600 Existing Building Improvement Services					
Total Facilities Acquisition, Construction and Improvement					
5000 Other Expenditures and Financing Uses					
5100 Debt Service / Other Expenditures and Financing Uses	7,737,412.20				
5200 Interfund Transfers - Out	1,270,000.00				
Total Other Expenditures and Financing Uses	\$9,007,412.20				
TOTAL ACTUAL EXPENDITURES & OTHER FINANCING USES	\$75,870,931.69				

LEA : 111444602 Mifflin County SD

Printed 11/15/2019 11:23:08 AM

	<u>Capital Reserve (1431)(32)</u>	<u>Other Capital Projects Fund(39)</u>	<u>Debt Service(40)</u>	<u>Permanent(90)</u>	<u>Total</u>
1000 Instruction					
1100 Regular Programs - Elementary / Secondary		10,405.00			28,690,038.25
1200 Special Programs - Elementary / Secondary					11,260,880.24
1300 Vocational Education					3,447,192.45
1400 Other Instructional Programs - Elementary / Secondary					1,011,718.41
1500 Nonpublic School Programs					88,496.13
Total Instruction		\$10,405.00			\$44,498,325.48
2000 Support Services					
2100 Support Services - Students					1,760,071.87
2200 Support Services - Instructional Staff					1,647,621.14
2300 Support Services - Administration			225,243.90		4,554,953.62
2400 Support Services - Pupil Health					657,525.69
2500 Support Services - Business					763,659.74
2600 Operation and Maintenance of Plant Services		172,970.00			6,013,679.56
2700 Student Transportation Services					4,899,423.35
2800 Support Services - Central		1,344,928.00			2,693,818.06
Total Support Services		\$1,517,898.00	\$225,243.90		\$22,990,753.03
3000 Operation of Non-Instructional Services					
3200 Student Activities					1,097,883.86
3300 Community Services					30,104.02
Total Operation of Non-Instructional Services					\$1,127,987.88
4000 Facilities Acquisition, Construction and Improvement Services					
4200 Existing Site Improvement Services		20,625.00			20,625.00
4600 Existing Building Improvement Services		10,410,883.00			10,410,883.00
Total Facilities Acquisition, Construction and Improvement		\$10,431,508.00			\$10,431,508.00
5000 Other Expenditures and Financing Uses					
5100 Debt Service / Other Expenditures and Financing Uses			8,165,017.86		15,902,430.06
5200 Interfund Transfers - Out			8,538,186.84		9,808,186.84
Total Other Expenditures and Financing Uses			\$16,703,204.70		\$25,710,616.90
TOTAL ACTUAL EXPENDITURES & OTHER FINANCING USES		\$11,959,811.00	\$16,928,448.60		\$104,759,191.29

LEA : 111444602 Mifflin County SD

Printed 11/15/2019 11:23:16 AM

PSERS Salary Data (Salary Data should relate to the General Fund only)

Amount	Description	Amount
	Total Salary Base for salaries subject to PSERS withholding	29,499,637.00
	Total Federally Funded salaries subject to PSERS withholding	2,154,395.00

Title I Expenditure Data

Amount	Description	Amount
	Expenditures Funded with Current Title I Funds	1,621,027.00
	Expenditures Funded with Carry over Title I Funds	676,794.00
Total	Title I Expenditure Data	\$2,297,821.00

Benefits for Staff Relative to Collective Bargaining Agreements				
	OBJECT	COVERED	NOT COVERED	TOTAL
10 General Fund	No Self Insurance data to report			
	211 Medical Insurance	6,886,261.00	680,500.00	7,566,761.00
	212 Dental Insurance	264,559.00	25,557.00	290,116.00
	215 Eye Care Insurance	41,645.00	3,728.00	45,373.00
	216 Prescription Insurance			
	271 Self-Insurance Medical Benefits			
	272 Self-Insurance Dental Benefits			
	275 Self-Insurance Eye Care Benefits			
	276 Self-Insurance Prescription Benefits			
	FUND TOTAL	\$7,192,465.00	\$709,785.00	\$7,902,250.00
50 Enterprise Fund	No Self Insurance data to report			
	211 Medical Insurance	205,572.00		205,572.00
	212 Dental Insurance	9,666.00		9,666.00
	215 Eye Care Insurance	1,779.00		1,779.00
	216 Prescription Insurance			
	271 Self-Insurance Medical Benefits			
	272 Self-Insurance Dental Benefits			
	275 Self-Insurance Eye Care Benefits			
	276 Self-Insurance Prescription Benefits			
	FUND TOTAL	\$217,017.00		\$217,017.00
60 Internal Service Fund	No Self Insurance data to report			
	211 Medical Insurance			
	212 Dental Insurance			
	215 Eye Care Insurance			
	216 Prescription Insurance			
	271 Self-Insurance Medical Benefits			
	272 Self-Insurance Dental Benefits			
	275 Self-Insurance Eye Care Benefits			
	276 Self-Insurance Prescription Benefits			
	FUND TOTAL			
Total of All Funds		\$7,409,482.00	\$709,785.00	\$8,119,267.00

LEA : 111444602 Mifflin County SD

Printed 11/15/2019 11:23:23 AM

Function	Special Education (Prior Year)	Nonspecial Education (Prior Year)	Total (Prior Year)	Special Education (Current Year)	Nonspecial Education (Current Year)	Total (Current Year)
2120 Guidance Services	186,692.64	1,057,924.99	1,244,617.63	193,556.39	1,096,819.55	1,290,375.94
2140 Psychological Services	315,972.80	105,324.26	421,297.06	295,806.42	98,602.14	394,408.56
2150 Speech Pathology and Audiology Services						
2160 Social Work Services				11,293.11	63,994.26	75,287.37
2260 Instruction and Curriculum Development Services	85,891.30	486,717.35	572,608.65	87,255.20	494,446.13	581,701.33
2350 Legal and Accounting Services	39,715.07	9,998.50	49,713.57	42,490.42	44,590.29	87,080.71
2420 Medical Services						
2440 Nursing Services	92,329.35	523,199.46	615,528.81	98,628.85	558,896.84	657,525.69
2700 Student Transportation Services	681,070.65	3,859,400.37	4,540,471.02	720,785.43	4,084,450.80	4,805,236.23
Total	\$1,401,671.81	\$6,042,564.93	\$7,444,236.74	\$1,449,815.82	\$6,441,800.01	\$7,891,615.83

LEA : 111444602 Mifflin County SD

Printed 11/15/2019 11:23:26 AM

(PRINCIPAL AMOUNTS ONLY)								
GOVERNMENTAL FUNDS/ ACTIVITIES	Short-Term Borrowing	General Obligation Bonds/Notes	Authority Building Obligations	Other Long-Term Debt	Other Post- Employment Benefits (OPEB)	Compensated Absences	Net Pension Liability	Total
1. Debt at Beginning of Fiscal Year		84,910,000.00		8,012,195.00	10,522,868.00	1,967,318.00	93,499,439.00	198,911,820.00
2. Additional Debt Incurred During Year		16,470,000.00		426,551.00	3,853,174.00	142,887.00		20,892,612.00
3. Retirements and Repayments		12,320,000.00		721,185.66			624,844.00	13,666,029.66
4. Debt at End of Fiscal Year		89,060,000.00		7,717,560.34	14,376,042.00	2,110,205.00	92,874,595.00	206,138,402.34
5. Accreted Interest at End Of Fiscal Year								
6. Total Debt and Accreted Interest		89,060,000.00		7,717,560.34	14,376,042.00	2,110,205.00	92,874,595.00	206,138,402.34
7. Current Portion P&I - Due within 1 year		7,702,695.45		875,172.00				8,577,867.45
8. Interest Paid during current fiscal year		3,183,332.59		68,058.21				3,251,390.80

(PRINCIPAL AMOUNTS ONLY)								
PROPRIETARY FUNDS	Short-Term Borrowing	General Obligation Bonds/Notes	Authority Building Obligations	Other Long-Term Debt	Other Post- Employment Benefits (OPEB)	Compensated Absences	Net Pension Liability	Total
1. Debt at Beginning of Fiscal Year					308,182.00	77,408.00	2,738,310.00	3,123,900.00
2. Additional Debt Incurred During Year					132,178.00		682.44	132,860.44
3. Retirements and Repayments						130.00		130.00
4. Debt at End of Fiscal Year					440,360.00	77,278.00	2,738,992.44	3,256,630.44
5. Accreted Interest at End Of Fiscal Year								
6. Total Debt and Accreted Interest					440,360.00	77,278.00	2,738,992.44	3,256,630.44
7. Current Portion P&I - Due within 1 year								
8. Interest Paid during current fiscal year								

LEA : 111444602 Mifflin County SD

Printed 11/15/2019 11:23:26 AM

Total Principal and Interest Payments Made by Your School - All Funds

Function	Fund		Principal (910)	Principal (920)	Interest (830)	Total (Principal +Interest)	Misc Other Uses (990)
5110	10	General Fund	4,484,131.66		3,251,390.80	7,735,522.46	
5110	20	Special Revenue Funds					
5110	30	Capital Projects Funds					
5110	40	Debt Service Fund					
5110	90	Permanent Fund					
5120	10	General Fund					
5120	20	Special Revenue Funds					
5120	30	Capital Projects Funds					
5120	40	Debt Service Fund	8,100,000.00		27,966.46	8,127,966.46	
Total Debt Payments - Governmental Funds			\$12,584,131.66		\$3,279,357.26	\$15,863,488.92	
Function	Fund		Principal (910)	Principal (920)	Interest (830)	Total (Principal +Interest)	
5110	50	Enterprise Fund					
5110	60	Internal Service Fund					
5120	50	Enterprise Fund					
5120	60	Internal Service Fund					
Total Debt Payments - Proprietary Funds							

LEA : 111444602 Mifflin County SD

Printed 11/15/2019 11:23:26 AM

Debt Details
Governmental Funds/ Activities

Debt Category	Debt Issue Date (MM/YYYY)	Debt at Beginning of Fiscal Year	Principal Amounts Only		Debt at End of Fiscal Year	Current Portion Due Within One Year (Principal and Interest)	Interest Paid During Fiscal Year
			Additions	Reductions / Repayments			
General Obligation Bonds/Notes – CIB	05/2019		8,200,000.00		8,200,000.00	254,520.00	
General Obligation Bonds/Notes – CIB	06/2019		8,270,000.00		8,270,000.00	482,694.69	
General Obligation Bonds/Notes – CIB	04/2018	9,995,000.00			9,995,000.00	337,509.00	252,984.83
General Obligation Bonds/Notes – CIB	12/2016	23,160,000.00		80,000.00	23,080,000.00	2,601,600.00	1,083,040.00
General Obligation Bonds/Notes – CIB	03/2016	23,670,000.00		585,000.00	23,085,000.00	2,771,450.00	1,060,325.00
General Obligation Bonds/Notes – CIB	02/2015	6,800,000.00		2,360,000.00	4,440,000.00	134,812.00	147,168.00
General Obligation Bonds/Notes – CIB	11/2014	6,505,000.00		335,000.00	6,170,000.00	523,196.00	188,259.00
General Obligation Bonds/Notes – CIB	12/2013	8,525,000.00		8,525,000.00			290,842.00
General Obligation Bonds/Notes – CIB	12/2012	6,255,000.00		435,000.00	5,820,000.00	596,913.76	160,713.76
Extended Term Financing Agreements		1,747,355.00		264,131.66	1,483,223.34	332,189.00	68,058.21
Other Long Term Debt/Liabilities		6,264,840.00	426,551.00	457,054.00	6,234,337.00	542,983.00	
Compensated Absences		1,967,318.00	142,887.00		2,110,205.00		
Other Post-Employment Benefits (OPEB)		10,522,868.00	3,853,174.00		14,376,042.00		
Net Pension Liability		93,499,439.00		624,844.00	92,874,595.00		
Totals for Debt Entered:		\$198,911,820.00	\$20,892,612.00	\$13,666,029.66	\$206,138,402.34	\$8,577,867.45	\$3,251,390.80

Bond Details
Proprietary Funds

Debt Category	Debt Issue Date (MM/YYYY)	Debt at Beginning of Fiscal Year	Principal Amounts Only		Debt at End of Fiscal Year	Current Portion Due Within One Year (Principal and Interest)	Interest Paid During Fiscal Year
			Additions	Reductions / Repayments			
Compensated Absences		77,408.00		130.00	77,278.00		
Other Post-Employment Benefits (OPEB)		308,182.00	132,178.00		440,360.00		
Net Pension Liability		2,738,310.00	682.44		2,738,992.44		
Totals for Debt Entered:		\$3,123,900.00	\$132,860.44	\$130.00	\$3,256,630.44		

LEA : 111444602 Mifflin County SD

Printed 11/15/2019 11:23:28 AM

General Fund (10)

Section 1: Tuition/Purchased Services as Reported within Expenditure Detail	Amount
Tuition Reported in General Fund Expenditures 1000-560	5,160,567.62
Purchased Services in General Fund Expenditures 1000-594 and 1000-597	770.81
Section 1 Total	\$5,161,338.43

Section 2: Tuition Paid to Institution Types During Fiscal Year	Tuition Paid For Nonspecial Education	Tuition Paid For Special Education	Total
1 1306 Institutions			
2 Institutionalized Children's Programs	1,423.31		1,423.31
3 Juveniles Incarcerated in Adult Facilities	7,712.07		7,712.07
4 Residential Treatment Facilities	424.62		424.62
5 Other Local Education Agencies	150,936.87	74,087.49	225,024.36
6 Brick and Mortar Charter Schools	610,419.31	383,047.17	993,466.48
7 Cyber Charter Schools	782,685.07	454,800.13	1,237,485.20
8 Career and Technology Centers	1,554,231.80	274,276.20	1,828,508.00
9 Approved Private Schools			
10 PA Chartered Schools for the Deaf and Blind			
11 Private Residential Rehabilitative Institutions		26,302.84	26,302.84
12 Juvenile Detention Centers	41,130.65	34,549.68	75,680.33
13 Special Program Jointures			
14 Other Tuition Not Included Elsewhere In This Section	120,666.50	644,644.72	765,311.22
Section 2 Total	\$3,269,630.20	\$1,891,708.23	\$5,161,338.43

LEA : 111444602 Mifflin County SD

Printed 11/15/2019 11:23:30 AM

Food Service / Cafeteria Operations Fund (51)

3000 Operation of Non-Instructional Services		<u>Total</u>
100 Personnel Services – Salaries		
100 Personnel Services – Salaries		898,103.46
Total Personnel Services – Salaries		\$898,103.46
200 Personnel Services – Employee Benefits		
210 Group Insurance – Contracted Provider		284,128.08
220 Social Security Contributions		67,239.35
230 PSERS Retirement Contributions		417,254.78
250 Unemployment Compensation		1,796.60
260 Workers' Compensation		3,056.92
280 Other Post-Employment Benefits (OPEB)		37,686.53
291 Other Retirement Plans		4,980.00
Total Personnel Services – Employee Benefits		\$816,142.26
400 Purchased Property Services		
410 Cleaning Services		9,533.52
420 Utility Services		472.67
430 Repairs and Maintenance Services		11,406.93
460 Extermination Services		550.00
Total Purchased Property Services		\$21,963.12
500 Other Purchased Services		
530 Communications		1,384.74
550 Printing and Binding		1,183.00
580 Travel		3,122.88
Total Other Purchased Services		\$5,690.62
600 Supplies		
610 General Supplies		75,898.10
630 Food		1,150,017.93
Total Supplies		\$1,225,916.03
800 Other Objects		
890 Miscellaneous Expenditures		2,797.73
Total Other Objects		\$2,797.73
Total 3000 Operation of Non-Instructional Services		\$2,970,613.22

LEA : 111444602 Mifflin County SD

Printed 11/15/2019 11:23:30 AM

Food Service / Cafeteria Operations Fund (51)

3100 Food Services	Elementary	Secondary	Federal	Total
100 <u>Personnel Services – Salaries</u>				
100 Personnel Services – Salaries				898,103.46
Total Personnel Services – Salaries				\$898,103.46
200 <u>Personnel Services – Employee Benefits</u>				
210 Group Insurance – Contracted Provider				284,128.08
220 Social Security Contributions				67,239.35
230 PSERS Retirement Contributions				417,254.78
250 Unemployment Compensation				1,796.60
260 Workers' Compensation				3,056.92
280 Other Post-Employment Benefits (OPEB)				37,686.53
291 Other Retirement Plans				4,980.00
Total Personnel Services – Employee Benefits				\$816,142.26
400 <u>Purchased Property Services</u>				
410 Cleaning Services				9,533.52
420 Utility Services				472.67
430 Repairs and Maintenance Services				11,406.93
460 Extermination Services				550.00
Total Purchased Property Services				\$21,963.12
500 <u>Other Purchased Services</u>				
530 Communications				1,384.74
550 Printing and Binding				1,183.00
580 Travel				3,122.88
Total Other Purchased Services				\$5,690.62
600 <u>Supplies</u>				
610 General Supplies				75,898.10
630 Food				1,150,017.93
Total Supplies				\$1,225,916.03
800 <u>Other Objects</u>				
890 Miscellaneous Expenditures				2,797.73
Total Other Objects				\$2,797.73
Total 3100 Food Services				\$2,970,613.22

	<u>Food Service(51)</u>	<u>Child Care Operations(52)</u>	<u>Other Enterprise(58)</u>	<u>Internal Service(60)</u>	<u>Total</u>
3000 <u>Operation of Non-Instructional Services</u>					
3100 Food Services	2,970,613.22				2,970,613.22
Total Operation of Non-Instructional Services	\$2,970,613.22				\$2,970,613.22
TOTAL ACTUAL EXPENDITURES & OTHER FINANCING USES	\$2,970,613.22				\$2,970,613.22

LEA : 111444602 Mifflin County SD

Fund	School	School Number	Local Personnel	Local Nonpersonnel	State Personnel	State Nonpersonnel	Federal Personnel	Federal Nonpersonnel	Total	Explanation
10										
	East Derry El Sch	6261	1,249,228.00	249,101.00	1,538,605.00	306,804.00	465,955.00	28,176.00	3,837,869.00	
	Indian Valley El Sch	8182	1,395,314.00	340,040.00	1,718,531.00	418,808.00	730,548.00	38,715.00	4,641,956.00	
	Indian Valley Intrmd Sch	8183	778,810.00	251,384.00	959,217.00	309,615.00	47,782.00	15,355.00	2,362,163.00	
	Lewistown El Sch	7789	2,374,115.00	499,341.00	2,924,067.00	615,011.00	1,001,620.00	150,079.00	7,564,233.00	
	Lewistown Intrmd Sch	8184	2,418,941.00	508,873.00	2,979,276.00	626,751.00	159,260.00	16,435.00	6,709,536.00	
	Mifflin Co HS	8187	5,037,708.00	1,248,774.00	6,204,666.00	1,538,046.00	194,621.00	1,837.00	14,225,652.00	
	Mifflin Co JHS	8186	3,406,740.00	701,622.00	4,195,893.00	864,149.00	164,876.00	2,013.00	9,335,293.00	
	Mifflin Co MS	8185	3,275,395.00	700,786.00	4,034,122.00	863,119.00	170,943.00	3,555.00	9,047,920.00	
	Strodes Mills El Sch	3196	889,495.00	223,018.00	1,095,541.00	274,679.00	408,751.00	23,481.00	2,914,965.00	
Total			20,825,746.00	4,722,939.00	25,649,918.00	5,816,982.00	3,344,356.00	279,646.00	60,639,587.00	