



January 2013

Lewistown Intermediate School
Mr. Paul J. Maidens, Principal
212 Green Avenue
Lewistown, PA 17044
(Phone 717-242-5801) (Fax 717-242-5804)
pjm33@mcsdk12.org



Important Dates

- Dec. 24 – Jan.1 Christmas Vacation – No School for Students
- January 18 Act 80 Day – No School for Students
- January 21 Martin Luther King Day – No School for Students
- February 15 Act 80 Day – Early Dismissal, 12:15
- February 18 Presidents’ Day – No School for Students
- March 29 Good Friday – No School for Students
- April 1 Easter Monday – No School for Students
- May 27 Memorial Day – No School for Students

January 18, 2013 – Full Day Act 80 Day
*Following the MCSD school board meeting on Thursday, December 20, 2012, it was decided to make the January 18, 2013 ACT 80 DAY a **full day dismissal** instead of ½ day Act 80 Day dismissal that was previously scheduled.*



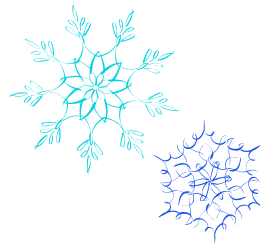
From the School Nurse

Do seasonal allergy symptoms have your kids down for the count? Runny nose, itchy eyes and nasal congestion can leave even the most even-tempered child tired and out of sorts. The next time seasonal allergies have your child feeling bad, here are some simple tips to help sooth their symptoms.

- **Stay Hydrated.** Keep a water bottle close by and encourage your child to drink.
- **Warm it up.** A hot shower/bath seems to offer relief.
- **Deal with Dry Air.** If you suspect the air in your house is dry, turn on a humidifier.
- **Keep your Hands to Yourself.** Encourage your child to avoid rubbing itchy eyes, which just irritates more.
- **Rub Jelly On It.** If your child’s nose is raw and red from blowing, soothe it with a dab of petroleum jelly.
- **Gargle to Relieve Sore Throats.** Use 8 oz. of warm water with 1–2 tablespoons of salt.
- **Get Face Time.** Warm compresses applied to the face will help soothe sinus pressure and pain.



- *Please send updated documentation from the physician when immunizations are administered.*
- *Keep your child home when ill until temperature is normal without medication for 24 hours.*
- *Please keep your child home when vomiting during the night.*



Parents,

By now you may have heard your child talk about DIBELS, GRADE & MAP testing. These diagnostic tests are used by your child's teachers to differentiate instruction specifically to address your child's learning needs in Reading, Language Arts & Math. Below is a brief description of what they are:

- DIBELS – Dynamic Indicators of Basic Early Literacy Skills are a set of standardized, individually administered, measures of early literacy development.
- Group Reading Assessment and Diagnostic Evaluation (GRADE) - This is a Reading/Language Arts assessment that will take place three times per year with all students. It is a one hour paper/pencil assessment that will be scanned at the District office. Results will be returned to grade level Data Teams for analysis.
- Measures of Academic Progress (MAP) - This is an online math and reading assessment. It is also given three times per year and is comprised of a 45 minute math assessment and a 45 minute reading assessment. Results are calculated immediately by the site for grade level Data Team analysis.

DATA ANALYSIS MEETINGS

- Teachers will be responsible for analyzing and interpreting data from the DIBELS, GRADE and MAP assessments. Emphasis will be placed on areas of deficiency in Math and Reading. Teachers will then align lesson plans to eligible content and differentiate instruction based on student's instructional level.



Office Notes

- *Excuses for absences are due within 3 days of the absence. Please include the student's **full** name. (First and **LAST** name)
- *Please notify the office of any changes to emergency forms.
- *Students arriving to school after 9:30 will be marked ½ day absent.
- *Students leaving school prior to 2:00 will be marked ½ day absent.
- *Students that arrive after 8:20 will be marked tardy.

PARENT PICK-UP/DROP OFF

Please use Green Avenue and the teachers' parking lot to pick-up or drop off your student. **DO NOT** use Kish Street.

If your child is not to ride the bus on a given day, a **note** is required, otherwise students will be placed on their bus as usual.

PSSA TESTING

March 11-15 Grade 5 (Writing)
April 8 – 19 Grade 4 (Math and Reading)
April 22 -26 Grade 4 (Science)



Thank you to the LIS Home and School for decorating the cafeteria for the holidays. Students designed wreaths that were used for the decorations.



Home and School

Meetings are the 2nd Monday of the Month.

The next meeting will be Monday, January 14, 7:00 pm (LIS Library).

